

ZONING BOUNDARY  
 SUB-AREA

1239 W. CORDOVA ST. DE404441  CITY OF VANCOUVER PLANNING DEPARTMENT	DATE 2000 11 28	
	DRAWN WGS	
FILENAME: F:\FRM\FDEV\2000\1239WCORDOVA.DWG		

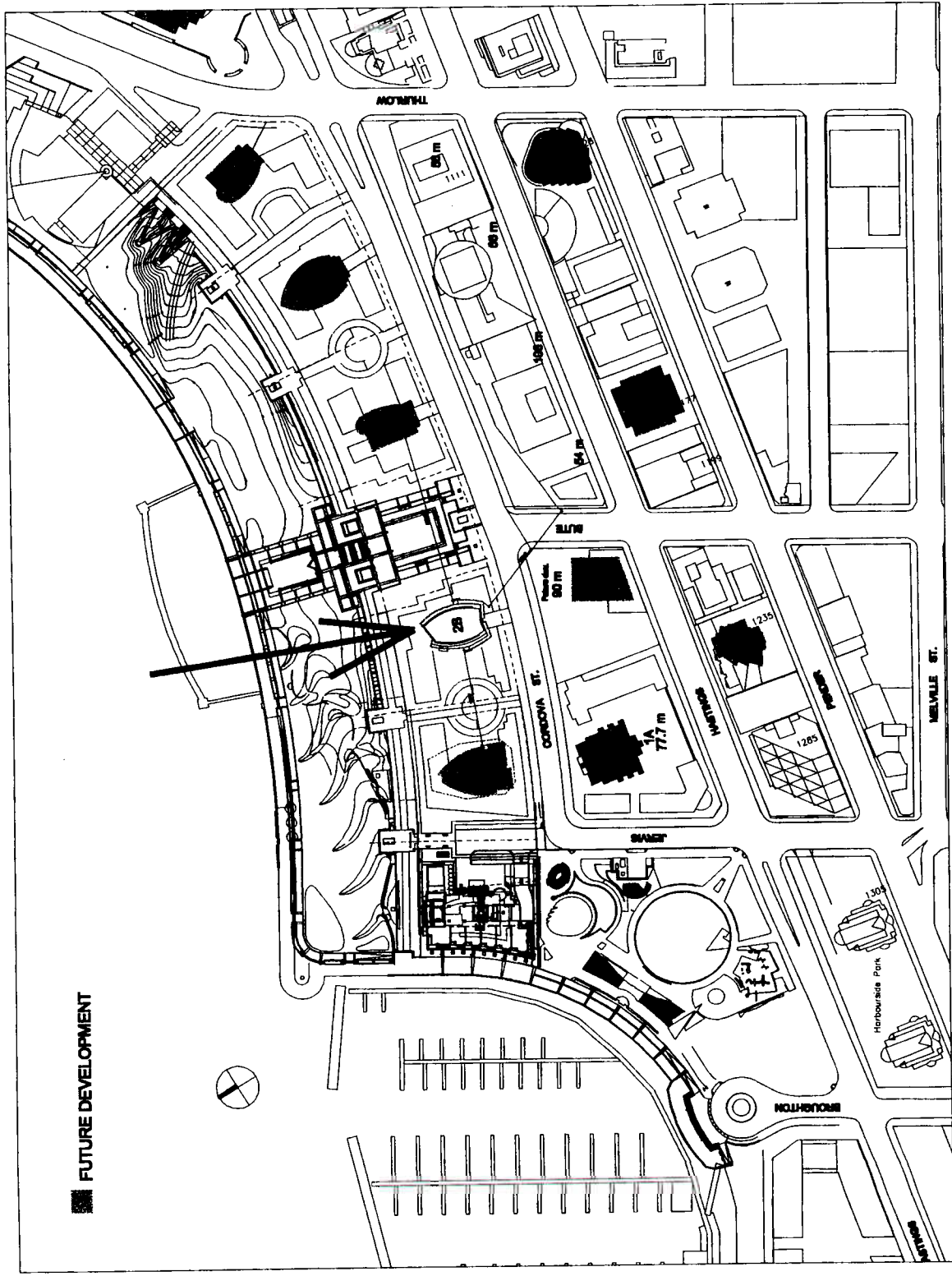
SCALE:  
 1:1000  
 DATE: REVISIONS BY:  
 1. 11/1/99  
 2. 11/1/99  
 3. 11/1/99  
 4. 11/1/99  
 5. 11/1/99  
 6. 11/1/99  
 7. 11/1/99  
 8. 11/1/99  
 9. 11/1/99  
 10. 11/1/99

PROJECT:  
**HARBOUR GREEN  
 TOWER 2B**  
 128 CORONA ST.  
 VANCOUVER

TITLE:  
**CONTEXT PLAN**

JOB NO.: 9913  
 DATE: AUG 11, 1999  
 SCALE: NS  
 DRAWN:  
 CHECKED:  
 REV. NO.:

DATE: 11/1/99  
 SHEET NO.: **DP-A1.0**  
 DATE: 11/1/99



SITEPLAN

SEAL:

DATE: \_\_\_\_\_

REVISIONS BY:

TOWER 2B

**HARBOLUR GREEN**  
**Eng + Arch**  
**ARCHITECTS**

PROJECT:  
**HARBOLUR GREEN**  
**TOWER 2B**

1230 CORDOVA ST  
 VANCOUVER

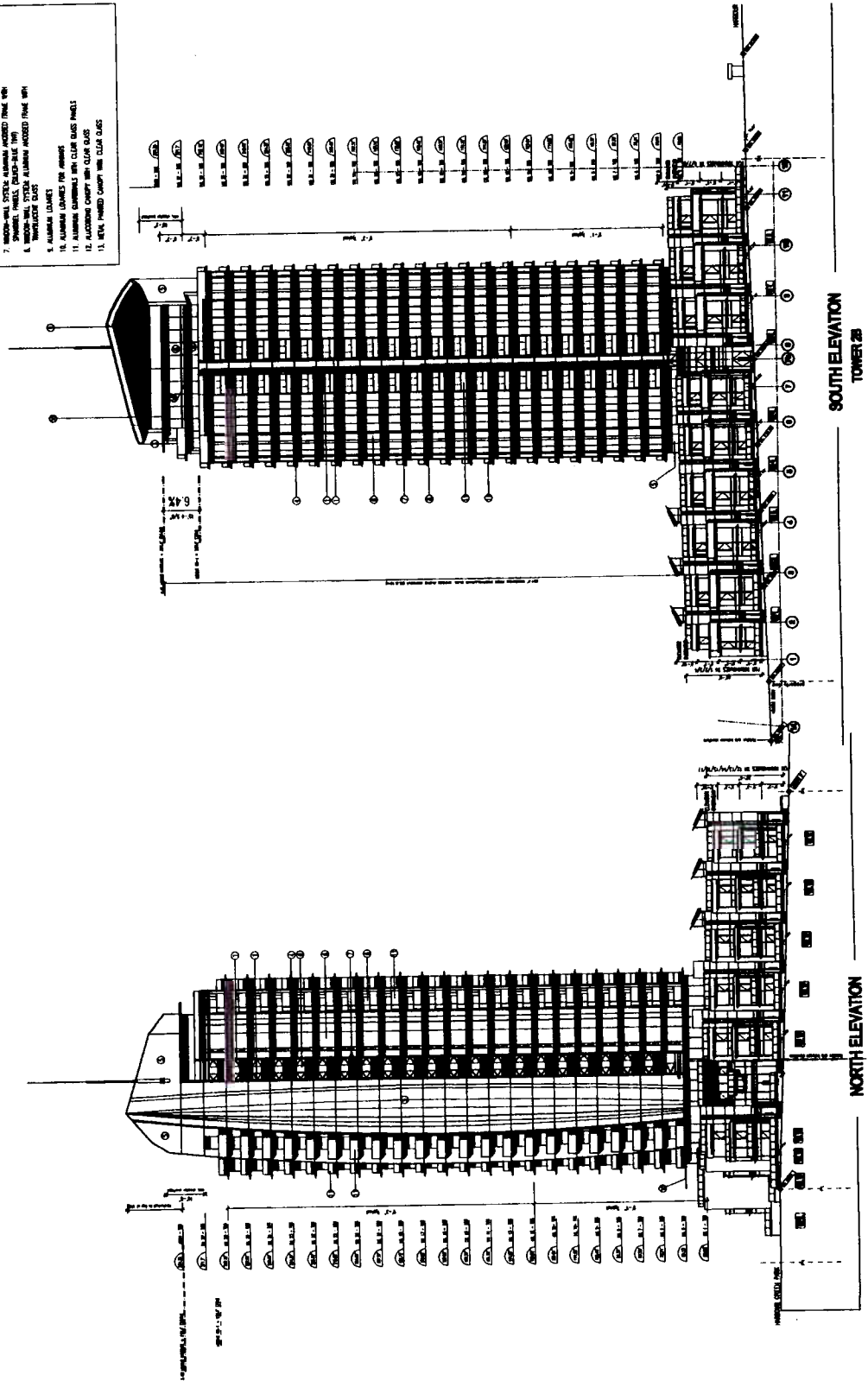
TITLE:  
**ELEVATIONS**  
**EAST AND WEST**

JOB NO.: 9913  
 DATE: May 4, 2000  
 SCALE: 1/20"=1'-0"  
 DRAWN: RW/SN  
 CHECKED:  
 REV. NO.:

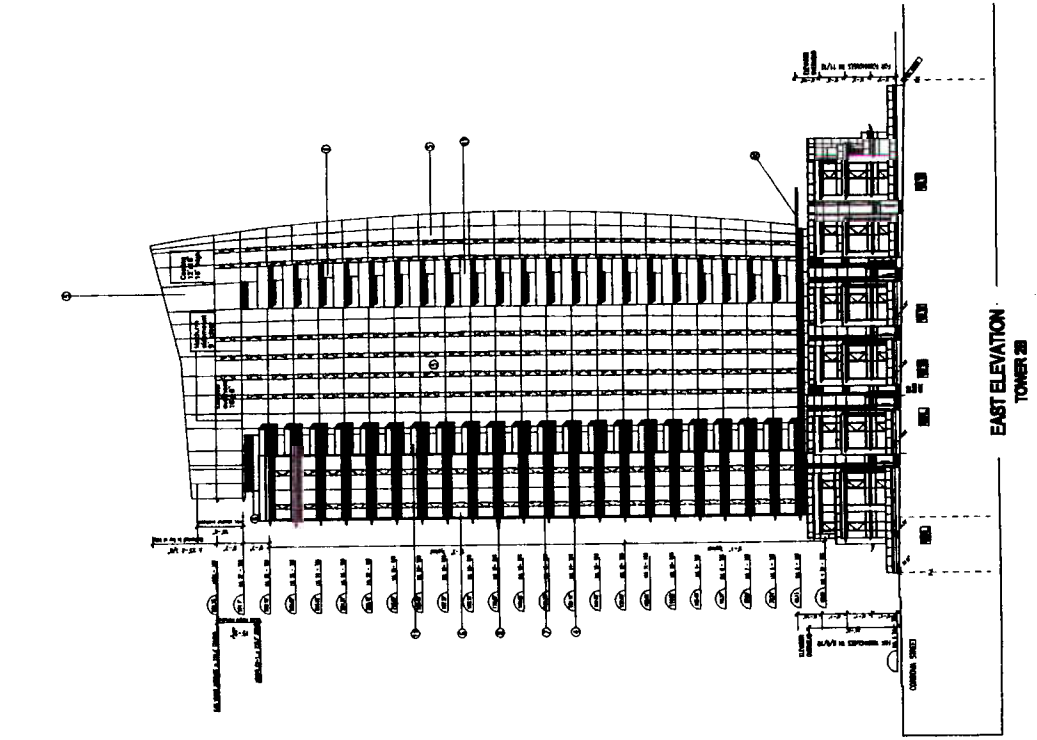
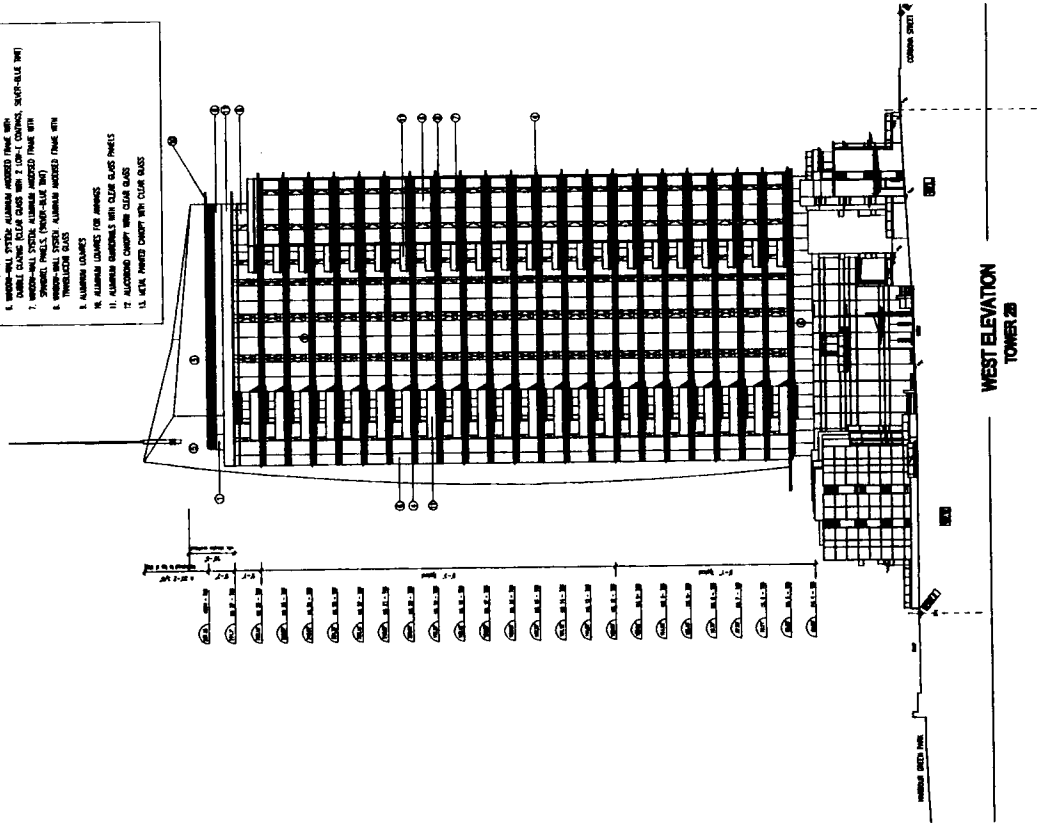
SHEET NO.: **DP-A5.2**

DATE PLOTTED: Jun 29, 1999

- MATERIAL LEGEND**
1. ARCHITECTURAL CONCRETE, FINISHED WITH CLEAR COATING
  2. STONE: GRANITE (SEE ARCHITECTURAL SCHEDULE)
  3. CONCRETE: EXPOSED, WITH WOOD GRAIN
  4. CONCRETE: COLOURED, WITH ALUMINUM PLATE
  5. CONCRETE: COLOURED, WITH ALUMINUM ANODIZED FRAME, WITH SPIN
  6. WINDOW-WALL SYSTEM: ALUMINUM ANODIZED FRAME, WITH SPIN
  7. WINDOW-WALL SYSTEM: ALUMINUM ANODIZED FRAME, WITH SPIN, WITH SHOWER PANEL, CLEAR-GLASS (TYP)
  8. WINDOW-WALL SYSTEM: ALUMINUM ANODIZED FRAME, WITH SPIN, WITH SHOWER PANEL, CLEAR-GLASS (TYP)
  9. WINDOW-WALL SYSTEM: ALUMINUM ANODIZED FRAME, WITH SPIN, WITH SHOWER PANEL, CLEAR-GLASS (TYP)
  10. ALUMINUM: CLEAR
  11. ALUMINUM: CLEAR, WITH ANODIZED
  12. ALUMINUM: CLEAR, WITH ANODIZED, WITH CLEAR GLASS
  13. METAL FINISHED CURTAIN WITH CLEAR GLASS



- MATERIAL LEGEND**
1. ARCHITECTURAL CONCRETE, FINISHED WITH CLEAR COATING
  2. STONE - BROWN SEA ORGAN (WEST-BLAZE) SLABS
  3. ALUMINUM PANELS - STAIN METALLIC
  4. CONCRETE COLOURED STAIN, COATED WITH ALUMINUM FLAKE
  5. CUSTOMER'S SYSTEM ALUMINUM ANODIZED FRAME GLASS WITH DOUBLE GLAZING SYSTEM (20-30% TRANSMITTANCE, SELF-BLENDING) WITH INTERIOR GLAZING SYSTEM (20-30% TRANSMITTANCE, SELF-BLENDING)
  6. CUSTOMER'S SYSTEM ALUMINUM ANODIZED FRAME GLASS WITH DOUBLE GLAZING SYSTEM (20-30% TRANSMITTANCE, SELF-BLENDING) WITH INTERIOR GLAZING SYSTEM (20-30% TRANSMITTANCE, SELF-BLENDING)
  7. INTERIOR-WALL SYSTEM, ALUMINUM ANODIZED FRAME WITH INTERIOR GLAZING SYSTEM (20-30% TRANSMITTANCE, SELF-BLENDING)
  8. INTERIOR-WALL SYSTEM, ALUMINUM ANODIZED FRAME WITH INTERIOR GLAZING SYSTEM (20-30% TRANSMITTANCE, SELF-BLENDING)
  9. ALUMINUM LEAVES
  10. ALUMINUM LEAVES FOR WINDOWS
  11. ALUMINUM HANDRAILS WITH CLEAR GLASS PANELS
  12. ALUMINUM CHAMFER WITH CLEAR GLASS
  13. METAL FINISHED CHAMFER WITH CLEAR GLASS



SEAL:

DATE: \_\_\_\_\_

REVISIONS BY:

DATE: \_\_\_\_\_

**PROJECT:**  
**HARBOUR GREEN  
 TOWER 2B**

1239 CORDOVA ST  
 VANCOUVER

**TITLE:**  
**ELEVATIONS  
 EAST AND WEST**

JOB NO.: 9913  
 DATE: May 4, 2000  
 SCALE: 1/20" = 1'-0"  
 DRAWN: RW/SN  
 CHECKED:

REV. NO.:

SHEET NO.: **DP-A5.1**

DATE PLOT FILED: June 29, 2000