

----- ZONING BOUNDARY

1299 W. HASTINGS ST. DE 404821

DATE 2000 08 03

DRAWN WGS



CITY OF VANCOUVER PLANNING DEPARTMENT

FILENAME: F:\FRMDFDEV\2000\1299WHAST000803.DWG



THE ABOVE DRAWING IS THE PROPERTY OF THE ARCHITECT AND IS NOT TO BE REPRODUCED OR COPIED IN ANY MANNER WITHOUT THE WRITTEN PERMISSION OF THE ARCHITECT.

| | | |
|---|--------|-------------------------|
| 1 | 20.000 | PRELIMINARY DEVELOPMENT |
| 2 | 21.000 | PRELIMINARY DEVELOPMENT |
| 3 | 22.000 | PRELIMINARY DEVELOPMENT |
| 4 | 23.000 | PRELIMINARY DEVELOPMENT |
| 5 | 24.000 | PRELIMINARY DEVELOPMENT |

1:1000
DATE: 15 MAY 2006
SCALE: 1:1000
PROJECT: COAL HARBOUR RESIDENTIAL LOT J

COAL HARBOUR RESIDENTIAL LOT J

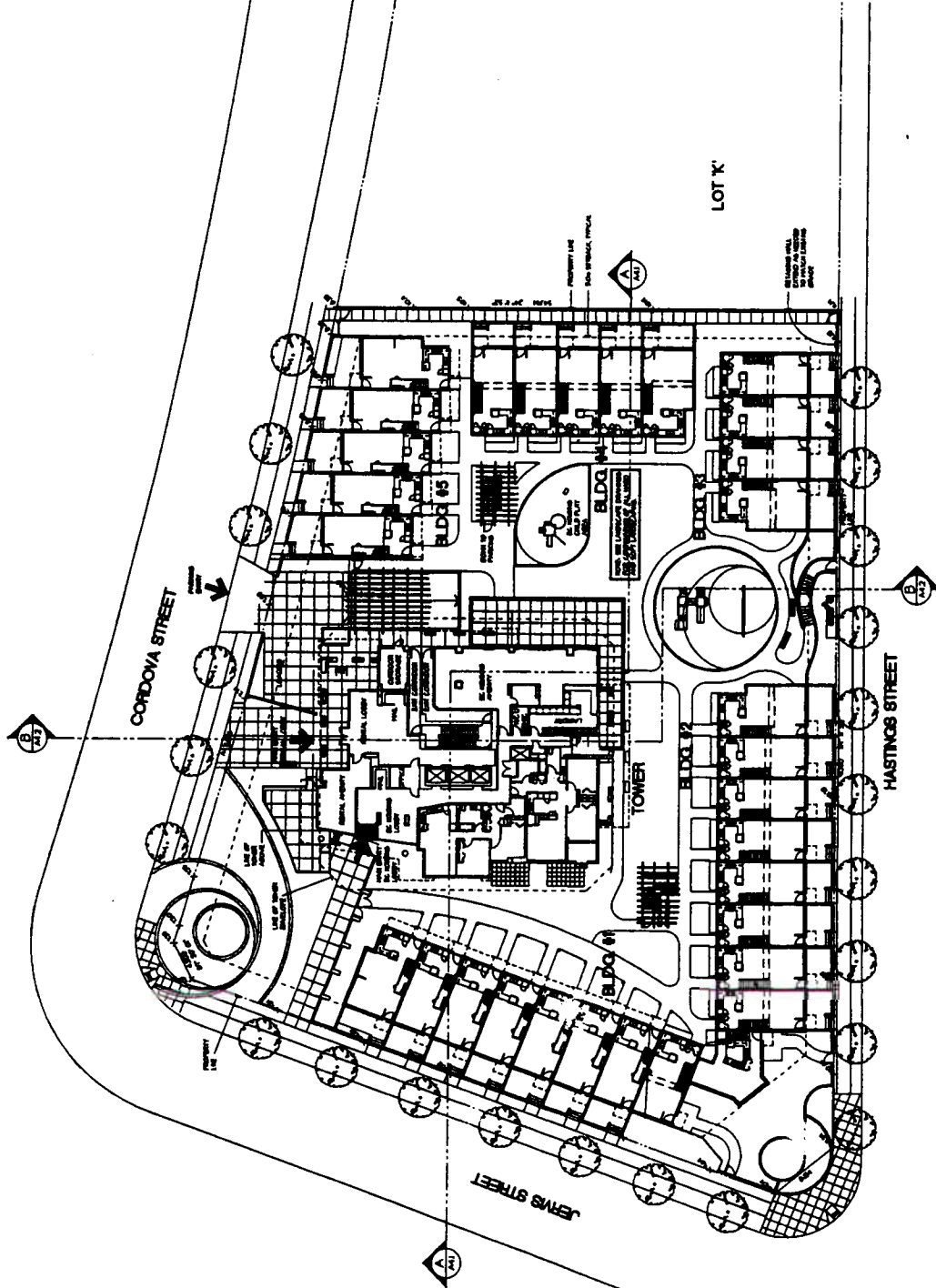
VINTAGE ARCHITECTURE
100/101 COLLEGE STREET
SYDNEY NSW 2000
TEL: (02) 9550 1000
FAX: (02) 9550 1001
WWW.VINTAGEARCHITECTURE.COM.AU

SITE PLAN

| | |
|----------------|--------------------------------|
| DATE | 15 MAY 2006 |
| SCALE | 1:1000 |
| PROJECT | COAL HARBOUR RESIDENTIAL LOT J |
| CLIENT | DC |
| PROJECT NUMBER | 41199208 |

1:1000
DATE: 15 MAY 2006
SCALE: 1:1000
PROJECT: COAL HARBOUR RESIDENTIAL LOT J

7





ALL DIMENSIONS ARE IN METERS UNLESS OTHERWISE SPECIFIED

| | | |
|---|----------------|----------------------------------|
| 1 | PROJECT NAME | COAL HARBOUR RESIDENTIAL LOT 'J' |
| 2 | CLIENT | WESTLIFE DEVELOPMENT |
| 3 | DATE | 13 JULY 200 |
| 4 | SCALE | 1:100 |
| 5 | PROJECT NUMBER | A119208 |

| | | |
|---|----------------|----------------------------------|
| 1 | PROJECT NAME | COAL HARBOUR RESIDENTIAL LOT 'J' |
| 2 | CLIENT | WESTLIFE DEVELOPMENT |
| 3 | DATE | 13 JULY 200 |
| 4 | SCALE | 1:100 |
| 5 | PROJECT NUMBER | A119208 |

PROJECT NAME
COAL HARBOUR RESIDENTIAL LOT 'J'



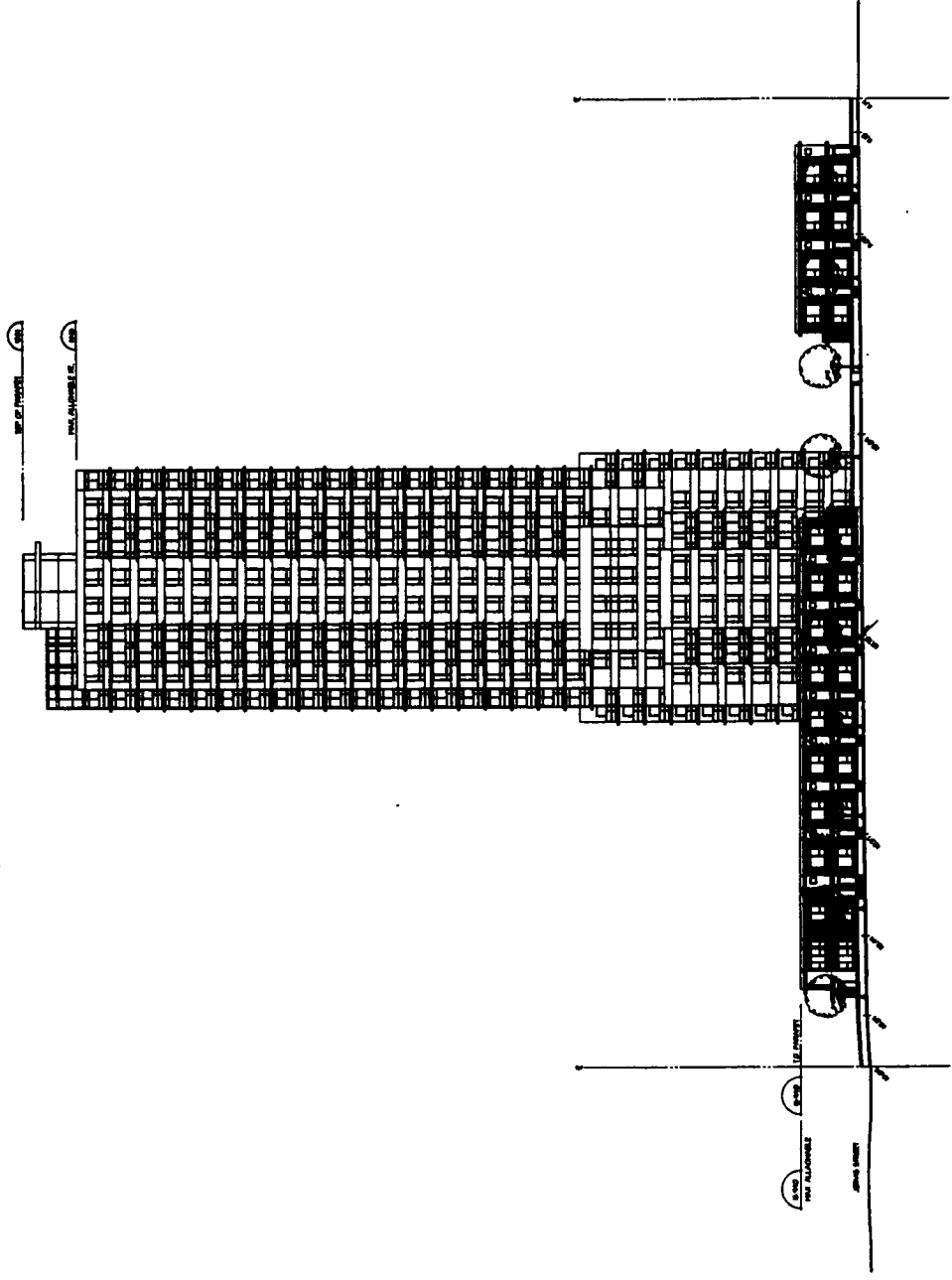
WESTLIFE DEVELOPMENT
 1000 SHEPPARD AVENUE EAST
 SUITE 1000, SCARBOROUGH, ONTARIO M1S 1T6
 TEL: 416 291 8888
 FAX: 416 291 8889
 WWW.WESTLIFE.COM

PROJECT NAME
HASTINGS STREET ELEVATION

| | |
|----------------|----------------------|
| DATE | 13 JULY 200 |
| SCALE | 1:100 |
| PROJECT NUMBER | A119208 |
| CLIENT | WESTLIFE DEVELOPMENT |
| ARCHITECT | WESTLIFE DEVELOPMENT |
| PROJECT NUMBER | A119208 |



PROJECT NUMBER
A119208



HASTINGS STREET ELEVATION



THE ARCHITECTS
 100 ...
 ...
 ...

| | | |
|-----|--------|----------------------|
| NO. | DATE | DESCRIPTION |
| 1 | 20 JAN | ISSUE PERMIT DRAWING |
| 2 | 24 FEB | ISSUE PERMIT DRAWING |
| 3 | 2000 | ISSUE PERMIT DRAWING |
| 4 | 2000 | ISSUE PERMIT DRAWING |

| | | |
|-----|--------|----------------------|
| NO. | DATE | DESCRIPTION |
| 1 | 20 JAN | ISSUE PERMIT DRAWING |
| 2 | 24 FEB | ISSUE PERMIT DRAWING |
| 3 | 2000 | ISSUE PERMIT DRAWING |
| 4 | 2000 | ISSUE PERMIT DRAWING |

PROJECT NAME
**COAL HARBOUR
 RESIDENTIAL
 LOT J**

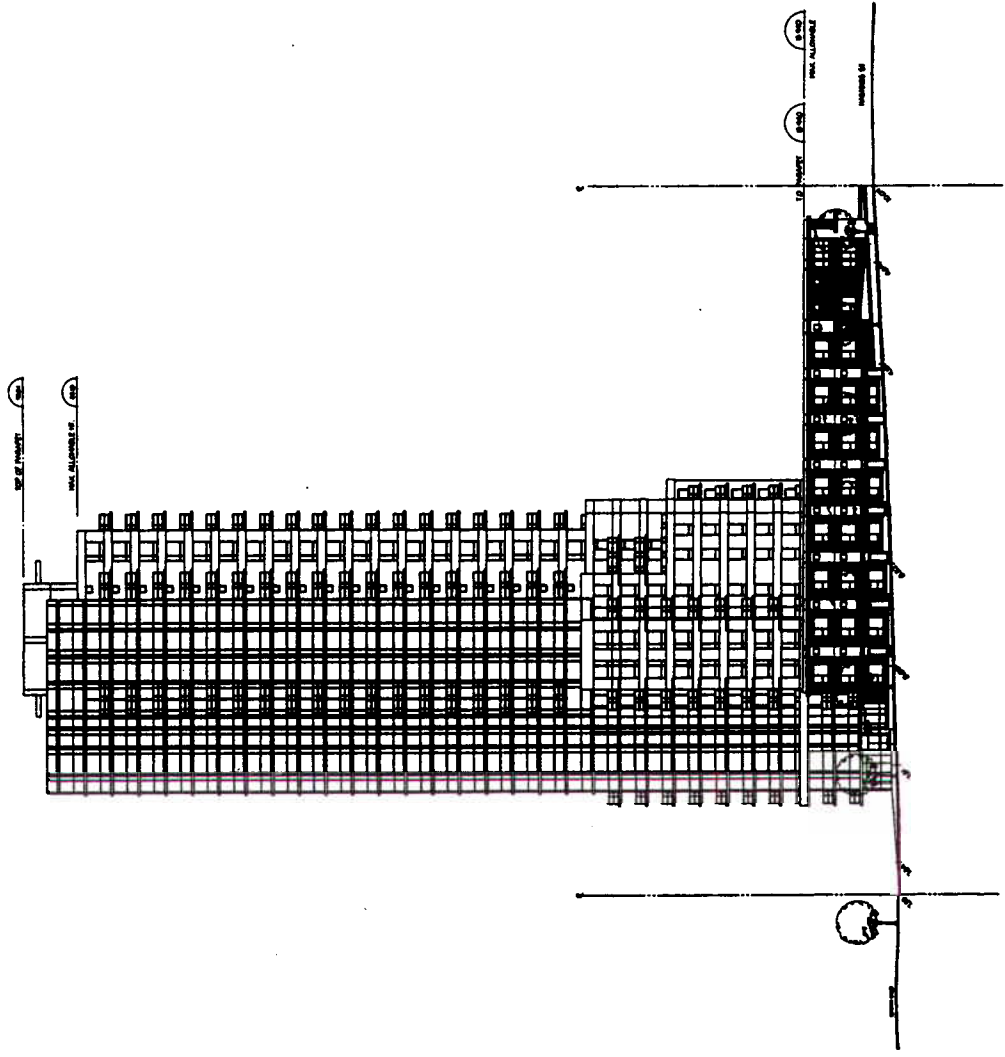
ARCHITECT
WATKINS
 100 ...
 ...

PROJECT NAME
**JERVIS STREET
 ELEVATION**

| | |
|--------------|------------|
| DATE | 13 MAY 201 |
| SCALE | 1:200 |
| PROJECT NO. | 41 |
| PROJECT NAME | A119148 |



A37



JERVIS STREET ELEVATION



DATE: 15 MAY 2011
PROJECT: COAL HARBOUR RESIDENTIAL LOT J
DRAWN BY: [illegible]

| | | |
|---|-------------|-------------|
| 1 | 15 MAY 2011 | 15 MAY 2011 |
| 2 | 15 MAY 2011 | 15 MAY 2011 |
| 3 | 15 MAY 2011 | 15 MAY 2011 |

NO. 15 MAY 2011
PROJECT: COAL HARBOUR RESIDENTIAL LOT J
DRAWN BY: [illegible]

PROJECT: COAL HARBOUR RESIDENTIAL LOT J

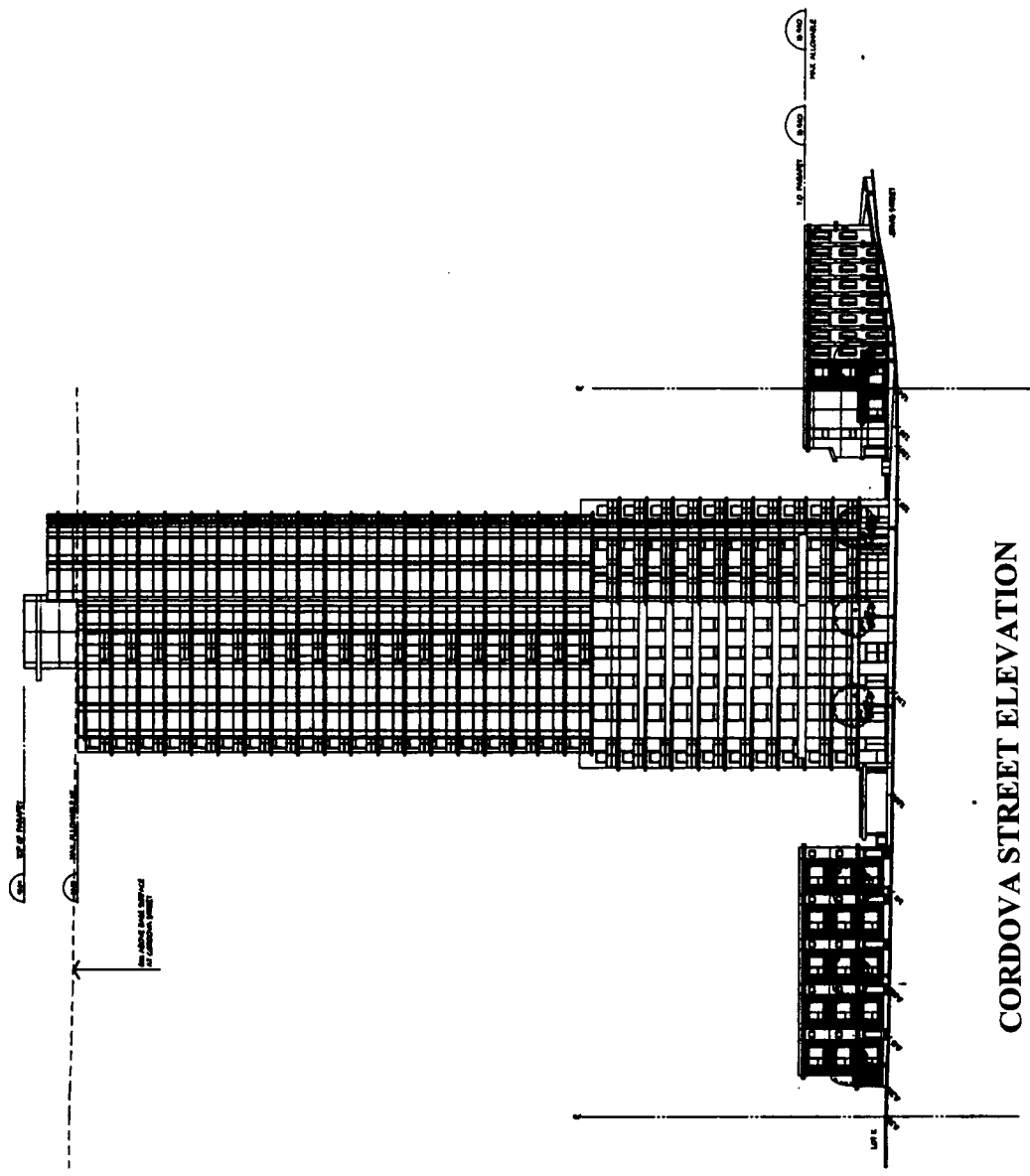
VMT
VOLUME 1
VOLUME 2
VOLUME 3
VOLUME 4
VOLUME 5
VOLUME 6
VOLUME 7
VOLUME 8
VOLUME 9
VOLUME 10
VOLUME 11
VOLUME 12
VOLUME 13
VOLUME 14
VOLUME 15
VOLUME 16
VOLUME 17
VOLUME 18
VOLUME 19
VOLUME 20
VOLUME 21
VOLUME 22
VOLUME 23
VOLUME 24
VOLUME 25
VOLUME 26
VOLUME 27
VOLUME 28
VOLUME 29
VOLUME 30
VOLUME 31
VOLUME 32
VOLUME 33
VOLUME 34
VOLUME 35
VOLUME 36
VOLUME 37
VOLUME 38
VOLUME 39
VOLUME 40
VOLUME 41
VOLUME 42
VOLUME 43
VOLUME 44
VOLUME 45
VOLUME 46
VOLUME 47
VOLUME 48
VOLUME 49
VOLUME 50
VOLUME 51
VOLUME 52
VOLUME 53
VOLUME 54
VOLUME 55
VOLUME 56
VOLUME 57
VOLUME 58
VOLUME 59
VOLUME 60
VOLUME 61
VOLUME 62
VOLUME 63
VOLUME 64
VOLUME 65
VOLUME 66
VOLUME 67
VOLUME 68
VOLUME 69
VOLUME 70
VOLUME 71
VOLUME 72
VOLUME 73
VOLUME 74
VOLUME 75
VOLUME 76
VOLUME 77
VOLUME 78
VOLUME 79
VOLUME 80
VOLUME 81
VOLUME 82
VOLUME 83
VOLUME 84
VOLUME 85
VOLUME 86
VOLUME 87
VOLUME 88
VOLUME 89
VOLUME 90
VOLUME 91
VOLUME 92
VOLUME 93
VOLUME 94
VOLUME 95
VOLUME 96
VOLUME 97
VOLUME 98
VOLUME 99
VOLUME 100

PROJECT: COAL HARBOUR RESIDENTIAL LOT J
DRAWN BY: [illegible]

| | |
|----------------|--------------------------------|
| DATE | 15 MAY 2011 |
| SCALE | 1:200 |
| PROJECT | COAL HARBOUR RESIDENTIAL LOT J |
| DRAWN BY | [illegible] |
| CHECKED BY | [illegible] |
| PROJECT NUMBER | A1190208 |



PROJECT NUMBER: A338



CORDOVA STREET ELEVATION