

KEY PLAN

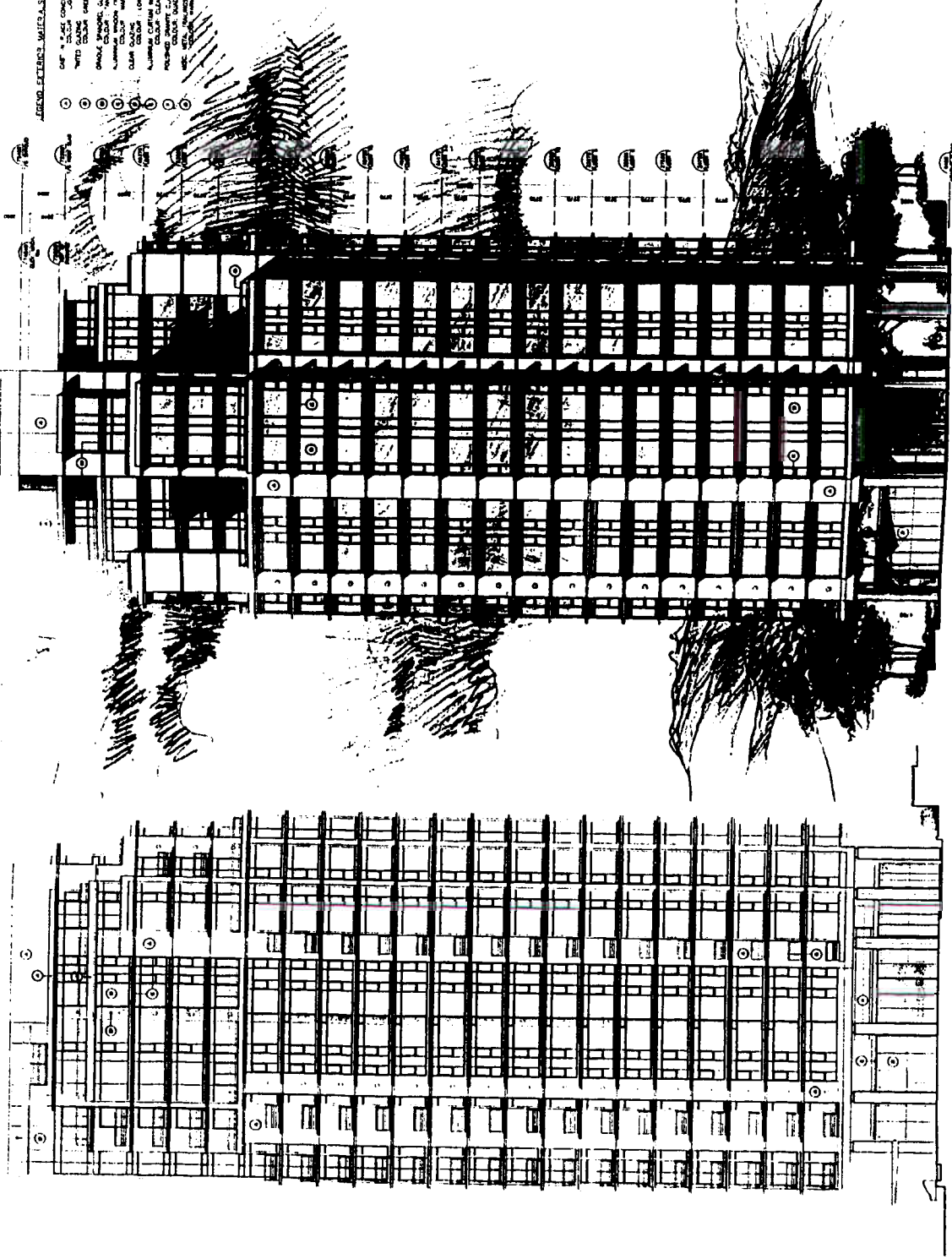
ADRIANO PETERLINI ARCHITECTS, INC. 22-0252
 ONE "A" PLACE CORP. BLDG. #101
 1010 CLAYTON STREET, SUITE 101
 SAN FRANCISCO, CALIFORNIA 94109
 (415) 774-1100
 ADRIANO PETERLINI ARCHITECTS, INC.
 22-0252
 ONE "A" PLACE CORP. BLDG. #101
 1010 CLAYTON STREET, SUITE 101
 SAN FRANCISCO, CALIFORNIA 94109
 (415) 774-1100

| | | |
|-----|---------|--------------------|
| NO. | DATE | REVISION |
| 1 | 10/1/88 | ISSUED FOR PERMITS |
| 2 | 10/1/88 | ISSUED FOR PERMITS |
| 3 | 10/1/88 | ISSUED FOR PERMITS |
| 4 | 10/1/88 | ISSUED FOR PERMITS |
| 5 | 10/1/88 | ISSUED FOR PERMITS |
| 6 | 10/1/88 | ISSUED FOR PERMITS |
| 7 | 10/1/88 | ISSUED FOR PERMITS |
| 8 | 10/1/88 | ISSUED FOR PERMITS |
| 9 | 10/1/88 | ISSUED FOR PERMITS |
| 10 | 10/1/88 | ISSUED FOR PERMITS |
| 11 | 10/1/88 | ISSUED FOR PERMITS |
| 12 | 10/1/88 | ISSUED FOR PERMITS |
| 13 | 10/1/88 | ISSUED FOR PERMITS |
| 14 | 10/1/88 | ISSUED FOR PERMITS |
| 15 | 10/1/88 | ISSUED FOR PERMITS |
| 16 | 10/1/88 | ISSUED FOR PERMITS |
| 17 | 10/1/88 | ISSUED FOR PERMITS |
| 18 | 10/1/88 | ISSUED FOR PERMITS |
| 19 | 10/1/88 | ISSUED FOR PERMITS |
| 20 | 10/1/88 | ISSUED FOR PERMITS |
| 21 | 10/1/88 | ISSUED FOR PERMITS |
| 22 | 10/1/88 | ISSUED FOR PERMITS |
| 23 | 10/1/88 | ISSUED FOR PERMITS |
| 24 | 10/1/88 | ISSUED FOR PERMITS |
| 25 | 10/1/88 | ISSUED FOR PERMITS |
| 26 | 10/1/88 | ISSUED FOR PERMITS |
| 27 | 10/1/88 | ISSUED FOR PERMITS |
| 28 | 10/1/88 | ISSUED FOR PERMITS |
| 29 | 10/1/88 | ISSUED FOR PERMITS |
| 30 | 10/1/88 | ISSUED FOR PERMITS |
| 31 | 10/1/88 | ISSUED FOR PERMITS |
| 32 | 10/1/88 | ISSUED FOR PERMITS |
| 33 | 10/1/88 | ISSUED FOR PERMITS |
| 34 | 10/1/88 | ISSUED FOR PERMITS |
| 35 | 10/1/88 | ISSUED FOR PERMITS |
| 36 | 10/1/88 | ISSUED FOR PERMITS |
| 37 | 10/1/88 | ISSUED FOR PERMITS |
| 38 | 10/1/88 | ISSUED FOR PERMITS |
| 39 | 10/1/88 | ISSUED FOR PERMITS |
| 40 | 10/1/88 | ISSUED FOR PERMITS |
| 41 | 10/1/88 | ISSUED FOR PERMITS |
| 42 | 10/1/88 | ISSUED FOR PERMITS |
| 43 | 10/1/88 | ISSUED FOR PERMITS |
| 44 | 10/1/88 | ISSUED FOR PERMITS |
| 45 | 10/1/88 | ISSUED FOR PERMITS |
| 46 | 10/1/88 | ISSUED FOR PERMITS |
| 47 | 10/1/88 | ISSUED FOR PERMITS |
| 48 | 10/1/88 | ISSUED FOR PERMITS |
| 49 | 10/1/88 | ISSUED FOR PERMITS |
| 50 | 10/1/88 | ISSUED FOR PERMITS |
| 51 | 10/1/88 | ISSUED FOR PERMITS |
| 52 | 10/1/88 | ISSUED FOR PERMITS |
| 53 | 10/1/88 | ISSUED FOR PERMITS |
| 54 | 10/1/88 | ISSUED FOR PERMITS |
| 55 | 10/1/88 | ISSUED FOR PERMITS |
| 56 | 10/1/88 | ISSUED FOR PERMITS |
| 57 | 10/1/88 | ISSUED FOR PERMITS |
| 58 | 10/1/88 | ISSUED FOR PERMITS |
| 59 | 10/1/88 | ISSUED FOR PERMITS |
| 60 | 10/1/88 | ISSUED FOR PERMITS |
| 61 | 10/1/88 | ISSUED FOR PERMITS |
| 62 | 10/1/88 | ISSUED FOR PERMITS |
| 63 | 10/1/88 | ISSUED FOR PERMITS |
| 64 | 10/1/88 | ISSUED FOR PERMITS |
| 65 | 10/1/88 | ISSUED FOR PERMITS |
| 66 | 10/1/88 | ISSUED FOR PERMITS |
| 67 | 10/1/88 | ISSUED FOR PERMITS |
| 68 | 10/1/88 | ISSUED FOR PERMITS |
| 69 | 10/1/88 | ISSUED FOR PERMITS |
| 70 | 10/1/88 | ISSUED FOR PERMITS |
| 71 | 10/1/88 | ISSUED FOR PERMITS |
| 72 | 10/1/88 | ISSUED FOR PERMITS |
| 73 | 10/1/88 | ISSUED FOR PERMITS |
| 74 | 10/1/88 | ISSUED FOR PERMITS |
| 75 | 10/1/88 | ISSUED FOR PERMITS |
| 76 | 10/1/88 | ISSUED FOR PERMITS |
| 77 | 10/1/88 | ISSUED FOR PERMITS |
| 78 | 10/1/88 | ISSUED FOR PERMITS |
| 79 | 10/1/88 | ISSUED FOR PERMITS |
| 80 | 10/1/88 | ISSUED FOR PERMITS |
| 81 | 10/1/88 | ISSUED FOR PERMITS |
| 82 | 10/1/88 | ISSUED FOR PERMITS |
| 83 | 10/1/88 | ISSUED FOR PERMITS |
| 84 | 10/1/88 | ISSUED FOR PERMITS |
| 85 | 10/1/88 | ISSUED FOR PERMITS |
| 86 | 10/1/88 | ISSUED FOR PERMITS |
| 87 | 10/1/88 | ISSUED FOR PERMITS |
| 88 | 10/1/88 | ISSUED FOR PERMITS |
| 89 | 10/1/88 | ISSUED FOR PERMITS |
| 90 | 10/1/88 | ISSUED FOR PERMITS |
| 91 | 10/1/88 | ISSUED FOR PERMITS |
| 92 | 10/1/88 | ISSUED FOR PERMITS |
| 93 | 10/1/88 | ISSUED FOR PERMITS |
| 94 | 10/1/88 | ISSUED FOR PERMITS |
| 95 | 10/1/88 | ISSUED FOR PERMITS |
| 96 | 10/1/88 | ISSUED FOR PERMITS |
| 97 | 10/1/88 | ISSUED FOR PERMITS |
| 98 | 10/1/88 | ISSUED FOR PERMITS |
| 99 | 10/1/88 | ISSUED FOR PERMITS |
| 100 | 10/1/88 | ISSUED FOR PERMITS |

Project: 1010 CLAYTON STREET
 1010 CLAYTON STREET, SUITE 101
 SAN FRANCISCO, CALIFORNIA 94109
 (415) 774-1100

TOWER C
 1010 BAYSHORE DRIVE

| | | |
|-----|---------|--------------------|
| NO. | DATE | REVISION |
| 1 | 10/1/88 | ISSUED FOR PERMITS |
| 2 | 10/1/88 | ISSUED FOR PERMITS |
| 3 | 10/1/88 | ISSUED FOR PERMITS |
| 4 | 10/1/88 | ISSUED FOR PERMITS |
| 5 | 10/1/88 | ISSUED FOR PERMITS |
| 6 | 10/1/88 | ISSUED FOR PERMITS |
| 7 | 10/1/88 | ISSUED FOR PERMITS |
| 8 | 10/1/88 | ISSUED FOR PERMITS |
| 9 | 10/1/88 | ISSUED FOR PERMITS |
| 10 | 10/1/88 | ISSUED FOR PERMITS |
| 11 | 10/1/88 | ISSUED FOR PERMITS |
| 12 | 10/1/88 | ISSUED FOR PERMITS |
| 13 | 10/1/88 | ISSUED FOR PERMITS |
| 14 | 10/1/88 | ISSUED FOR PERMITS |
| 15 | 10/1/88 | ISSUED FOR PERMITS |
| 16 | 10/1/88 | ISSUED FOR PERMITS |
| 17 | 10/1/88 | ISSUED FOR PERMITS |
| 18 | 10/1/88 | ISSUED FOR PERMITS |
| 19 | 10/1/88 | ISSUED FOR PERMITS |
| 20 | 10/1/88 | ISSUED FOR PERMITS |
| 21 | 10/1/88 | ISSUED FOR PERMITS |
| 22 | 10/1/88 | ISSUED FOR PERMITS |
| 23 | 10/1/88 | ISSUED FOR PERMITS |
| 24 | 10/1/88 | ISSUED FOR PERMITS |
| 25 | 10/1/88 | ISSUED FOR PERMITS |
| 26 | 10/1/88 | ISSUED FOR PERMITS |
| 27 | 10/1/88 | ISSUED FOR PERMITS |
| 28 | 10/1/88 | ISSUED FOR PERMITS |
| 29 | 10/1/88 | ISSUED FOR PERMITS |
| 30 | 10/1/88 | ISSUED FOR PERMITS |
| 31 | 10/1/88 | ISSUED FOR PERMITS |
| 32 | 10/1/88 | ISSUED FOR PERMITS |
| 33 | 10/1/88 | ISSUED FOR PERMITS |
| 34 | 10/1/88 | ISSUED FOR PERMITS |
| 35 | 10/1/88 | ISSUED FOR PERMITS |
| 36 | 10/1/88 | ISSUED FOR PERMITS |
| 37 | 10/1/88 | ISSUED FOR PERMITS |
| 38 | 10/1/88 | ISSUED FOR PERMITS |
| 39 | 10/1/88 | ISSUED FOR PERMITS |
| 40 | 10/1/88 | ISSUED FOR PERMITS |
| 41 | 10/1/88 | ISSUED FOR PERMITS |
| 42 | 10/1/88 | ISSUED FOR PERMITS |
| 43 | 10/1/88 | ISSUED FOR PERMITS |
| 44 | 10/1/88 | ISSUED FOR PERMITS |
| 45 | 10/1/88 | ISSUED FOR PERMITS |
| 46 | 10/1/88 | ISSUED FOR PERMITS |
| 47 | 10/1/88 | ISSUED FOR PERMITS |
| 48 | 10/1/88 | ISSUED FOR PERMITS |
| 49 | 10/1/88 | ISSUED FOR PERMITS |
| 50 | 10/1/88 | ISSUED FOR PERMITS |
| 51 | 10/1/88 | ISSUED FOR PERMITS |
| 52 | 10/1/88 | ISSUED FOR PERMITS |
| 53 | 10/1/88 | ISSUED FOR PERMITS |
| 54 | 10/1/88 | ISSUED FOR PERMITS |
| 55 | 10/1/88 | ISSUED FOR PERMITS |
| 56 | 10/1/88 | ISSUED FOR PERMITS |
| 57 | 10/1/88 | ISSUED FOR PERMITS |
| 58 | 10/1/88 | ISSUED FOR PERMITS |
| 59 | 10/1/88 | ISSUED FOR PERMITS |
| 60 | 10/1/88 | ISSUED FOR PERMITS |
| 61 | 10/1/88 | ISSUED FOR PERMITS |
| 62 | 10/1/88 | ISSUED FOR PERMITS |
| 63 | 10/1/88 | ISSUED FOR PERMITS |
| 64 | 10/1/88 | ISSUED FOR PERMITS |
| 65 | 10/1/88 | ISSUED FOR PERMITS |
| 66 | 10/1/88 | ISSUED FOR PERMITS |
| 67 | 10/1/88 | ISSUED FOR PERMITS |
| 68 | 10/1/88 | ISSUED FOR PERMITS |
| 69 | 10/1/88 | ISSUED FOR PERMITS |
| 70 | 10/1/88 | ISSUED FOR PERMITS |
| 71 | 10/1/88 | ISSUED FOR PERMITS |
| 72 | 10/1/88 | ISSUED FOR PERMITS |
| 73 | 10/1/88 | ISSUED FOR PERMITS |
| 74 | 10/1/88 | ISSUED FOR PERMITS |
| 75 | 10/1/88 | ISSUED FOR PERMITS |
| 76 | 10/1/88 | ISSUED FOR PERMITS |
| 77 | 10/1/88 | ISSUED FOR PERMITS |
| 78 | 10/1/88 | ISSUED FOR PERMITS |
| 79 | 10/1/88 | ISSUED FOR PERMITS |
| 80 | 10/1/88 | ISSUED FOR PERMITS |
| 81 | 10/1/88 | ISSUED FOR PERMITS |
| 82 | 10/1/88 | ISSUED FOR PERMITS |
| 83 | 10/1/88 | ISSUED FOR PERMITS |
| 84 | 10/1/88 | ISSUED FOR PERMITS |
| 85 | 10/1/88 | ISSUED FOR PERMITS |
| 86 | 10/1/88 | ISSUED FOR PERMITS |
| 87 | 10/1/88 | ISSUED FOR PERMITS |
| 88 | 10/1/88 | ISSUED FOR PERMITS |
| 89 | 10/1/88 | ISSUED FOR PERMITS |
| 90 | 10/1/88 | ISSUED FOR PERMITS |
| 91 | 10/1/88 | ISSUED FOR PERMITS |
| 92 | 10/1/88 | ISSUED FOR PERMITS |
| 93 | 10/1/88 | ISSUED FOR PERMITS |
| 94 | 10/1/88 | ISSUED FOR PERMITS |
| 95 | 10/1/88 | ISSUED FOR PERMITS |
| 96 | 10/1/88 | ISSUED FOR PERMITS |
| 97 | 10/1/88 | ISSUED FOR PERMITS |
| 98 | 10/1/88 | ISSUED FOR PERMITS |
| 99 | 10/1/88 | ISSUED FOR PERMITS |
| 100 | 10/1/88 | ISSUED FOR PERMITS |



SOUTH ELEVATION

WEST ELEVATION

