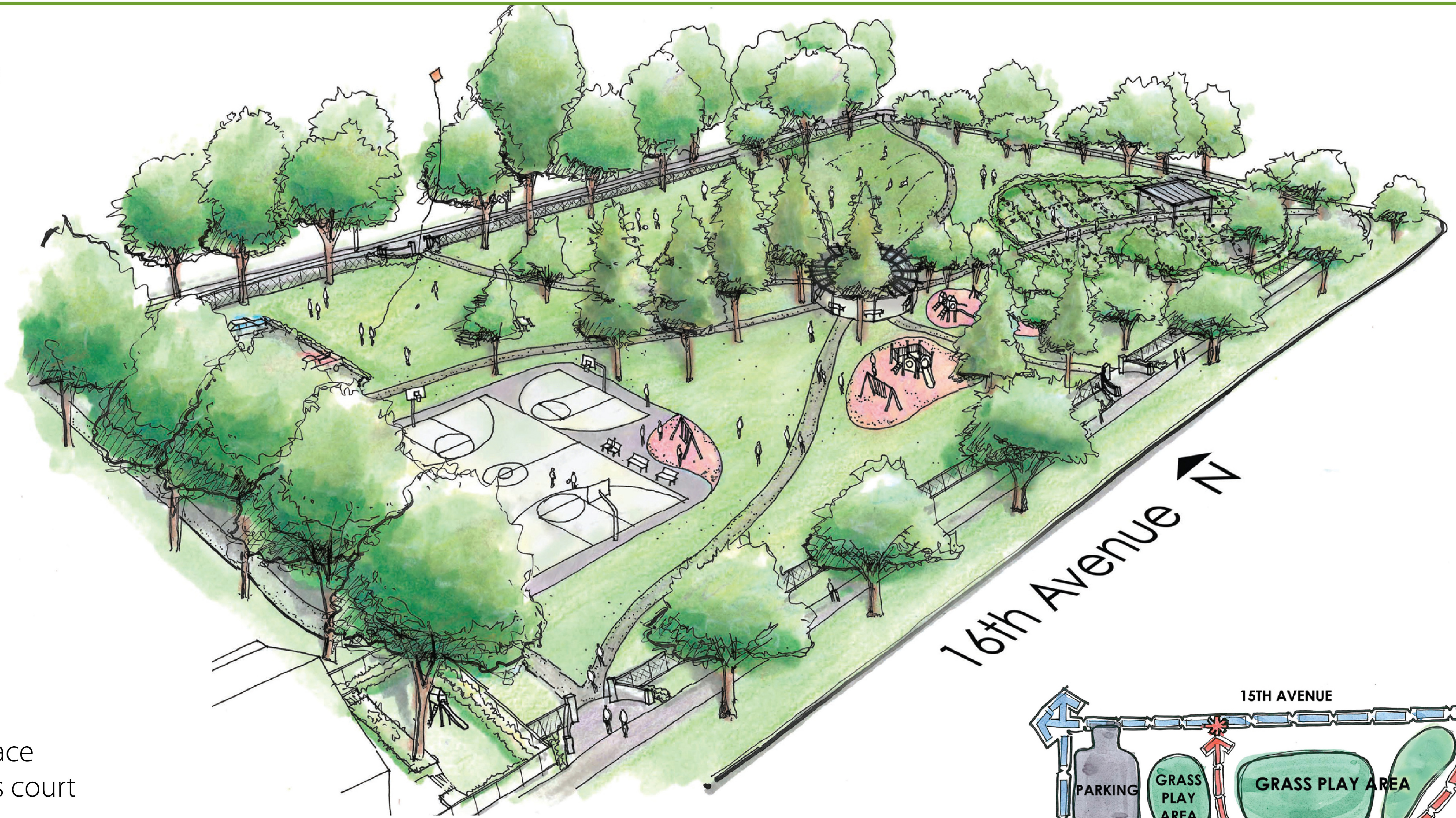


Green Space



Includes:

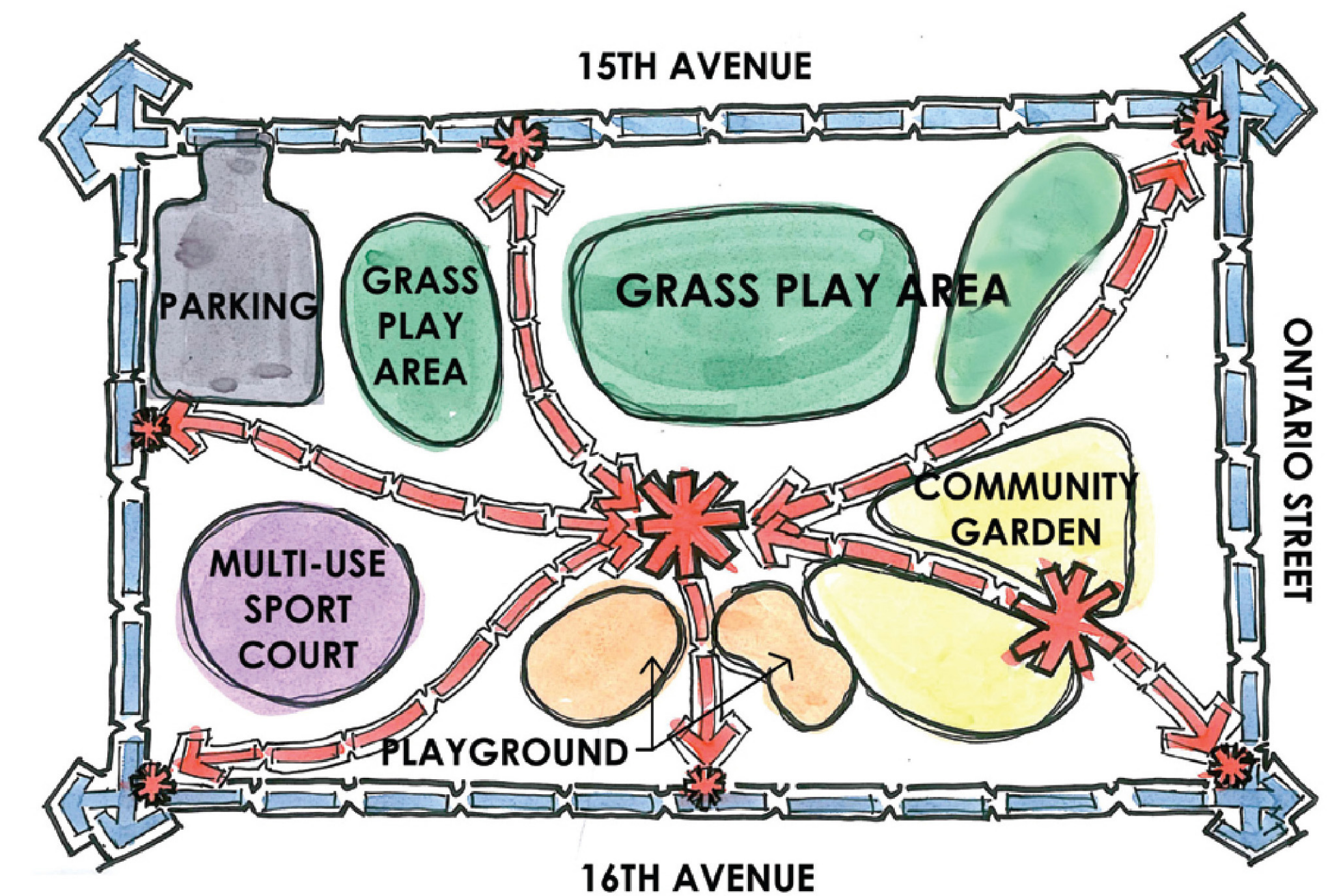
- Playground
- Daycare playspace
- Multi-use sports court
- Grass play areas
- Community gardens
- Arbour/Plaza
- Paths
- Trees
- Benches

Permeable Green Space: 85%

Parking: 20 stalls

Cost: about \$1.0 million

Timing: to be built in 2010/11



New Pool, New Change Rooms



Also includes:

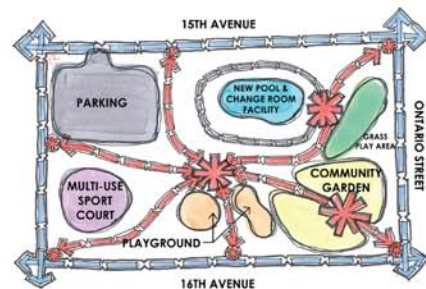
- Playground
- Daycare playspace
- Multi-use sports court
- Grass play area
- Community Gardens
- Arbour/Plaza
- Paths
- Trees
- Benches

Permeable Green Space: 70%

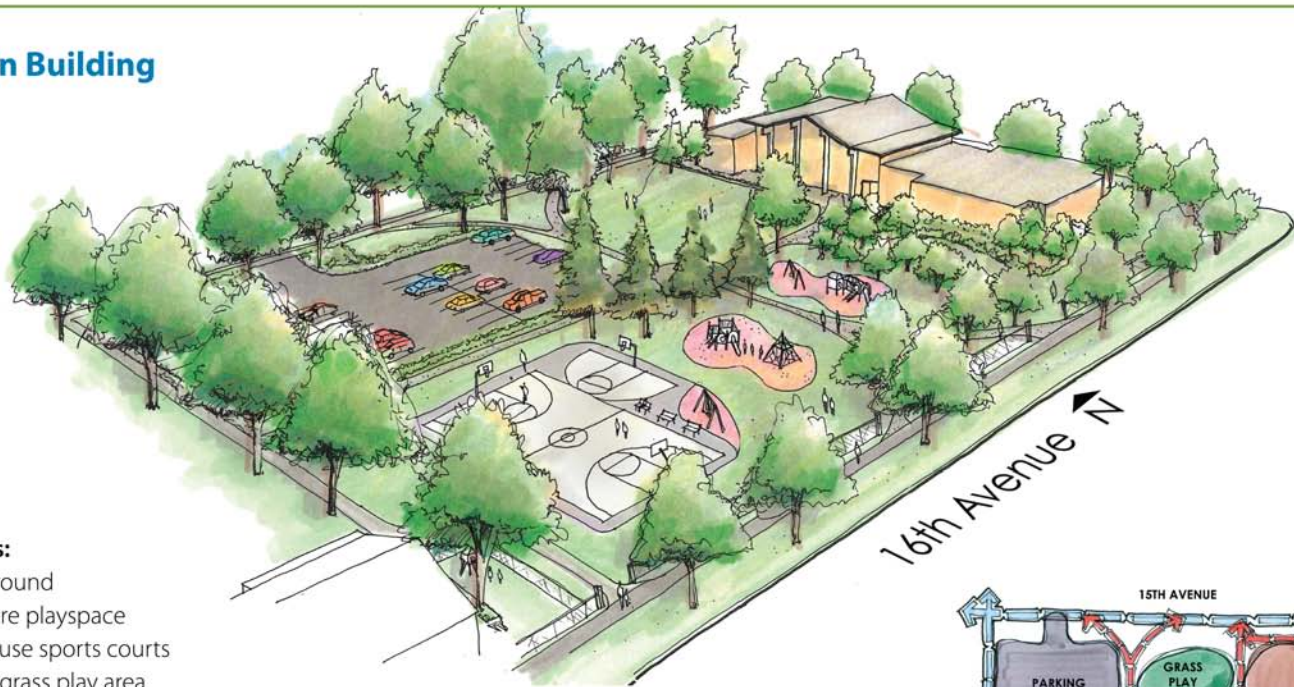
Parking: 40 stalls

Cost: about \$6.0 million

Timing: unknown since funding for pool would have to be secured in a future capital plan.



Retain Building



Includes:

- Playground
- Daycare playspace
- Multi-use sports courts
- Small grass play area
- Paths
- Trees
- Benches

Permeable Green Space: 65%

Parking: 60 stalls

Cost: \$4 – 6 million depending on extent of building upgrades needed.

Timing: park portion could be delivered in 2010/11, building upgrade dependent on additional funding from future capital plan or outside funding.

