

An aerial photograph of Vancouver Harbour, Canada. In the foreground, a large, modern, multi-story building with a glass facade and a curved roof is docked at a pier. A large white cruise ship is docked at the pier next to it. The water is a deep blue. In the background, there are green hills, a suspension bridge, and mountains under a clear blue sky.

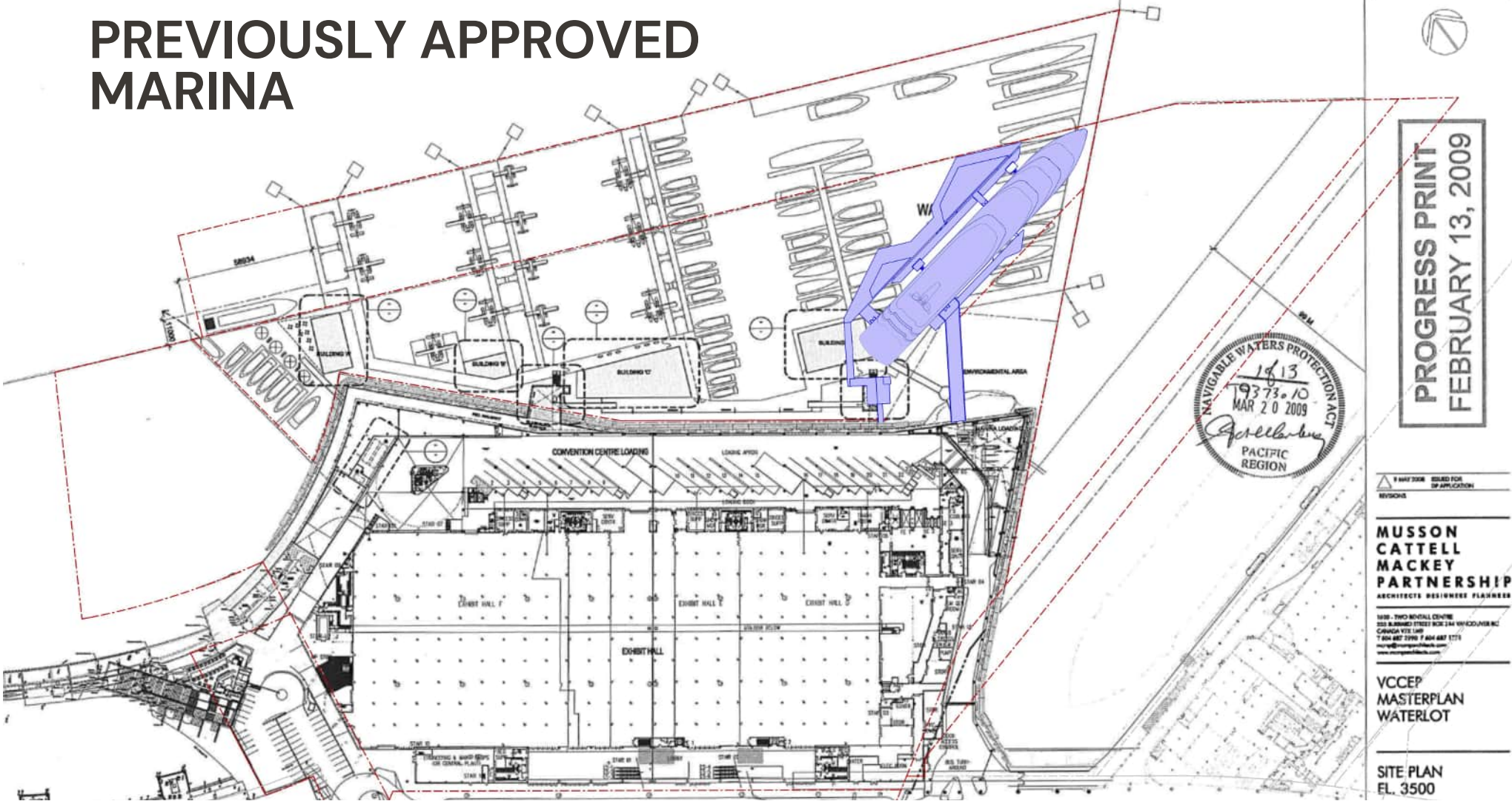
PUBLIC HEARING PRESENTATION

April 14, 2026

sunborn
INTERNATIONAL

 VANCOUVER
HARBOUR
FLIGHT
CENTRE

PREVIOUSLY APPROVED MARINA



PROGRESS PRINT
FEBRUARY 13, 2009

**MUSSON
CATTELL
MACKEY
PARTNERSHIP**
ARCHITECTS DESIGNERS PLANNERS

1818 - TWO MOUNTAIN CENTRE
300 BURNBURY STREET BOX 144 WHITTICOURT BC
CANADA V1E 1A6
TEL 604 887 2990 FAX 604 887 1771
www.mcp-partnership.com

**VCCEP
MASTERPLAN
WATERLOT**

**SITE PLAN
EL. 3500**





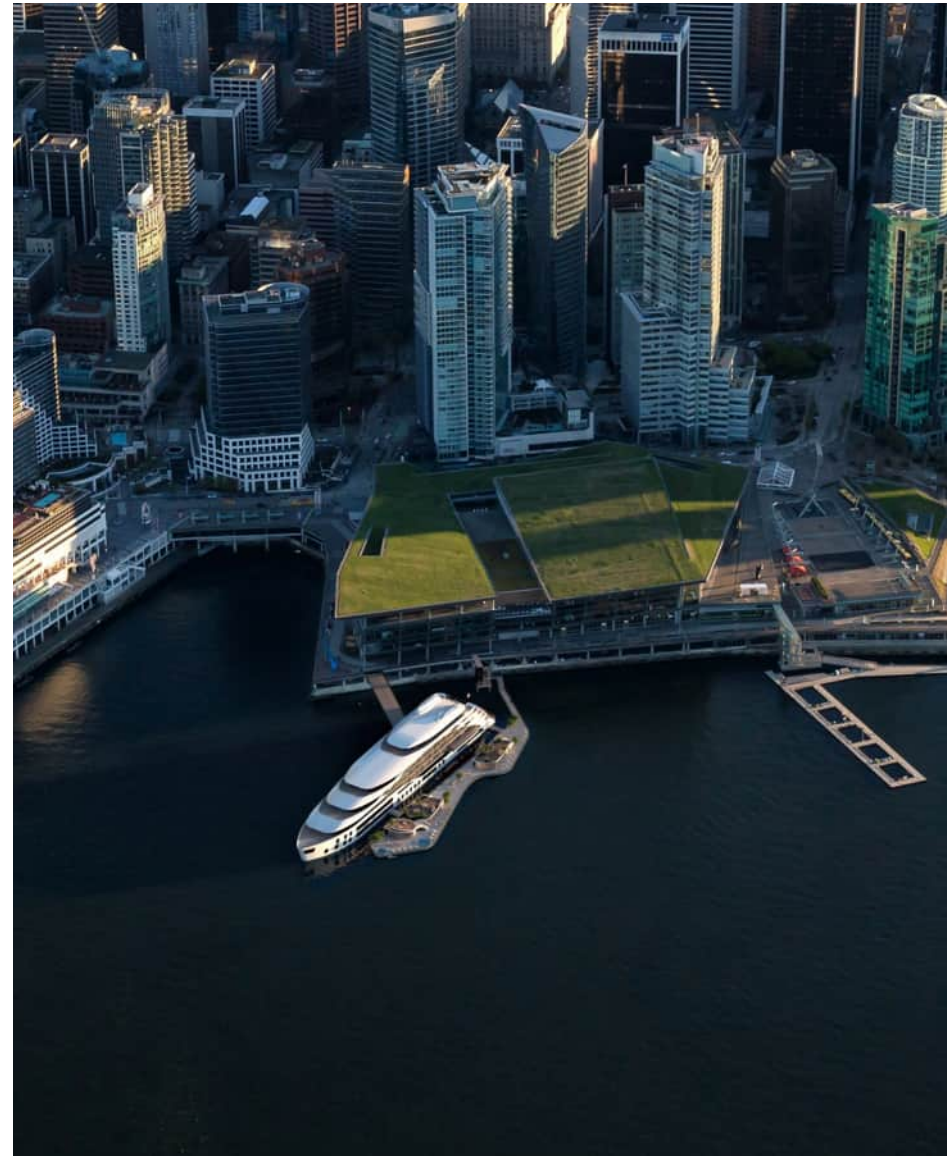
SUNBORN LONDON

Successful Partnership with ExCel London

SUNBORN VANCOUVER PROPOSAL

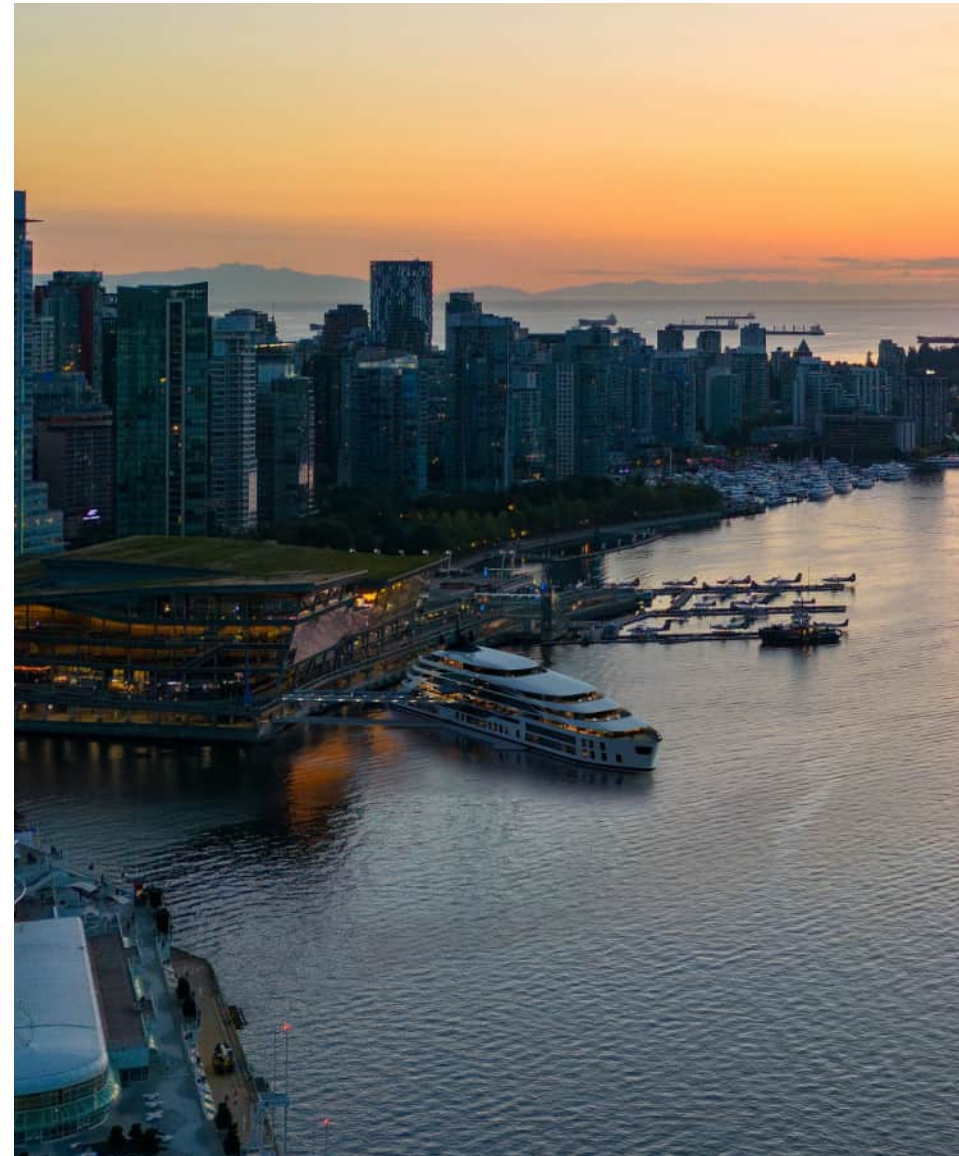
SUNBORN VANCOUVER PROPOSAL

- Text amendment to allow hotel use
- 250 room hotel vessel
- Connected to Vancouver Convention Centre (VCC)
- Non-permanent with off-site construction
- Maritime asset complements location
- New public dock and water access
- Open to public



PROJECT BENEFITS

- Responding to local hotel shortage
- Supporting Vancouver conferences
- 200 new FTE plus indirect jobs
- Low carbon footprint
- Invigorating Coal Harbour waterfront



SUNBORN VANCOUVER PROPOSAL



 sunborn

ARRIVAL (EAST WALKWAY)



ARRIVAL (EAST WALKWAY)



ARRIVAL (EAST WALKWAY)



ARRIVAL (EAST WALKWAY)



ARRIVAL (EAST WALKWAY)



ARRIVAL (EAST WALKWAY)



ARRIVAL (MAIN ENTRANCE)



ARRIVAL (NORTHERN WALKWAY)



ARRIVAL (NORTHERN WALKWAY)



ARRIVAL (NORTHERN WALKWAY)



ARRIVAL (NORTHERN WALKWAY)



ARRIVAL (NORTHERN WALKWAY)

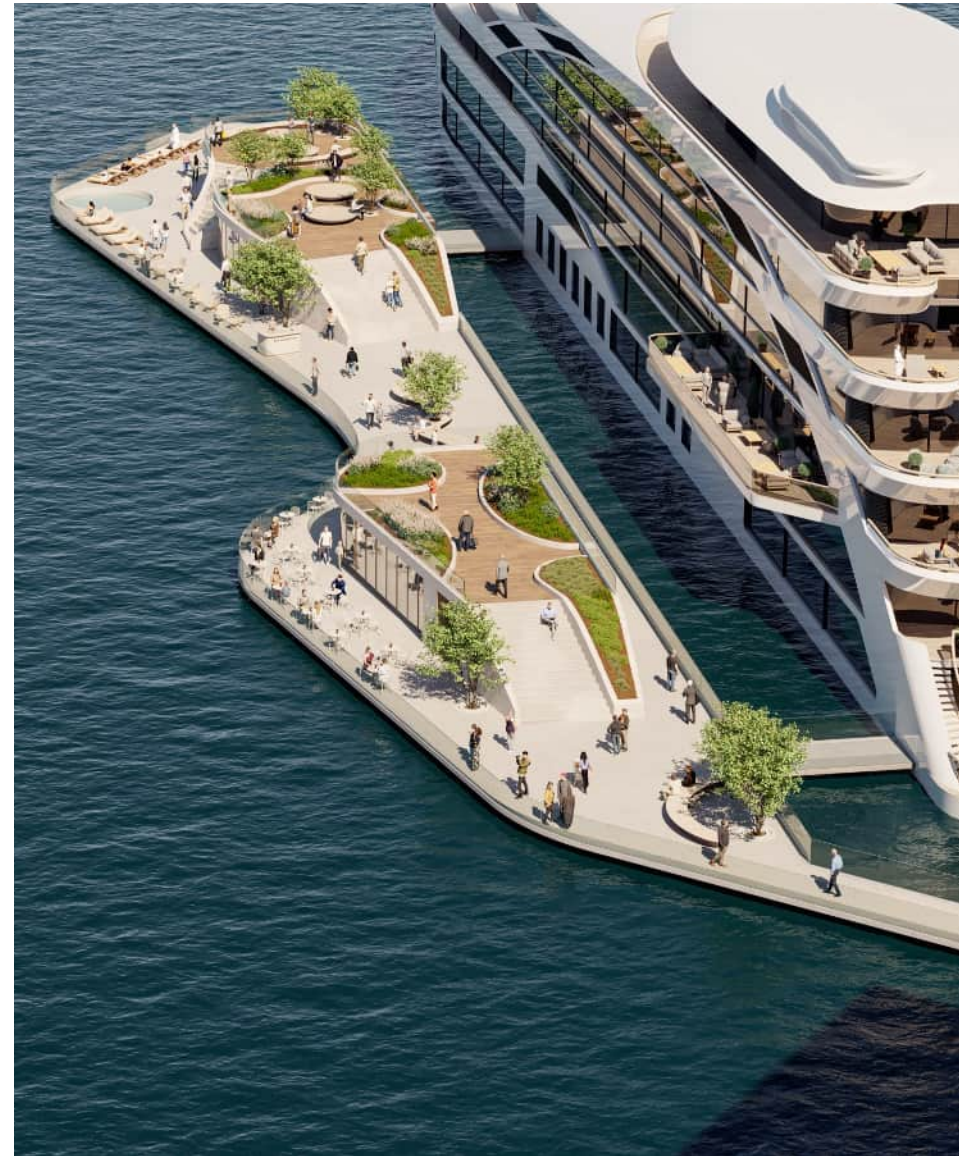


ARRIVAL (NORTHERN WALKWAY)




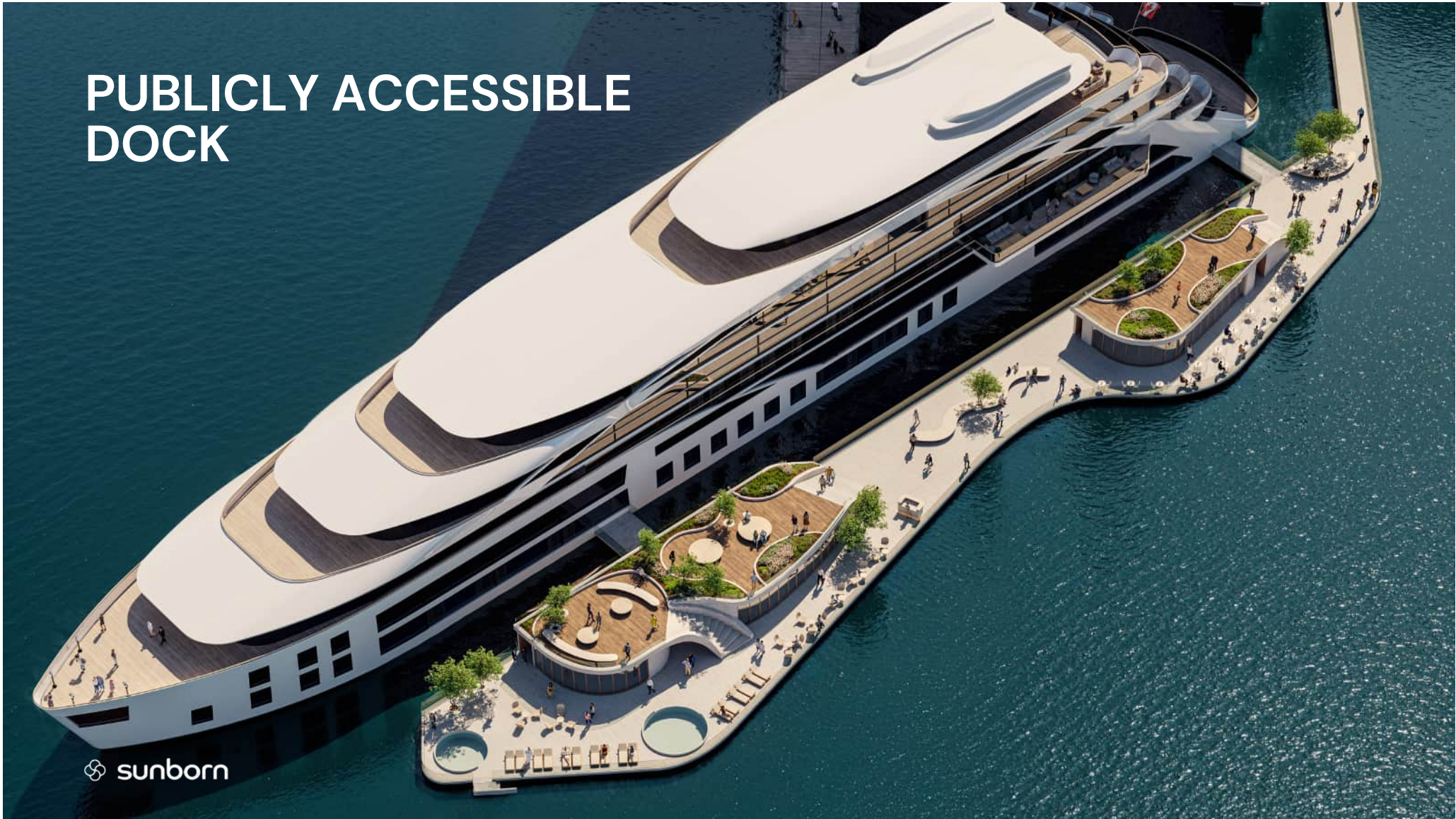
PUBLICLY ACCESSIBLE DOCK

- New public amenity, open year-round
- Includes café and spa open to public
- New access to water
- Open spaces
- Viewing areas
- Seating options



PUBLICLY ACCESSIBLE DOCK

 sunborn



PUBLIC VIEWS (NEW DOCK)



PUBLIC VIEWS (NEW DOCK)

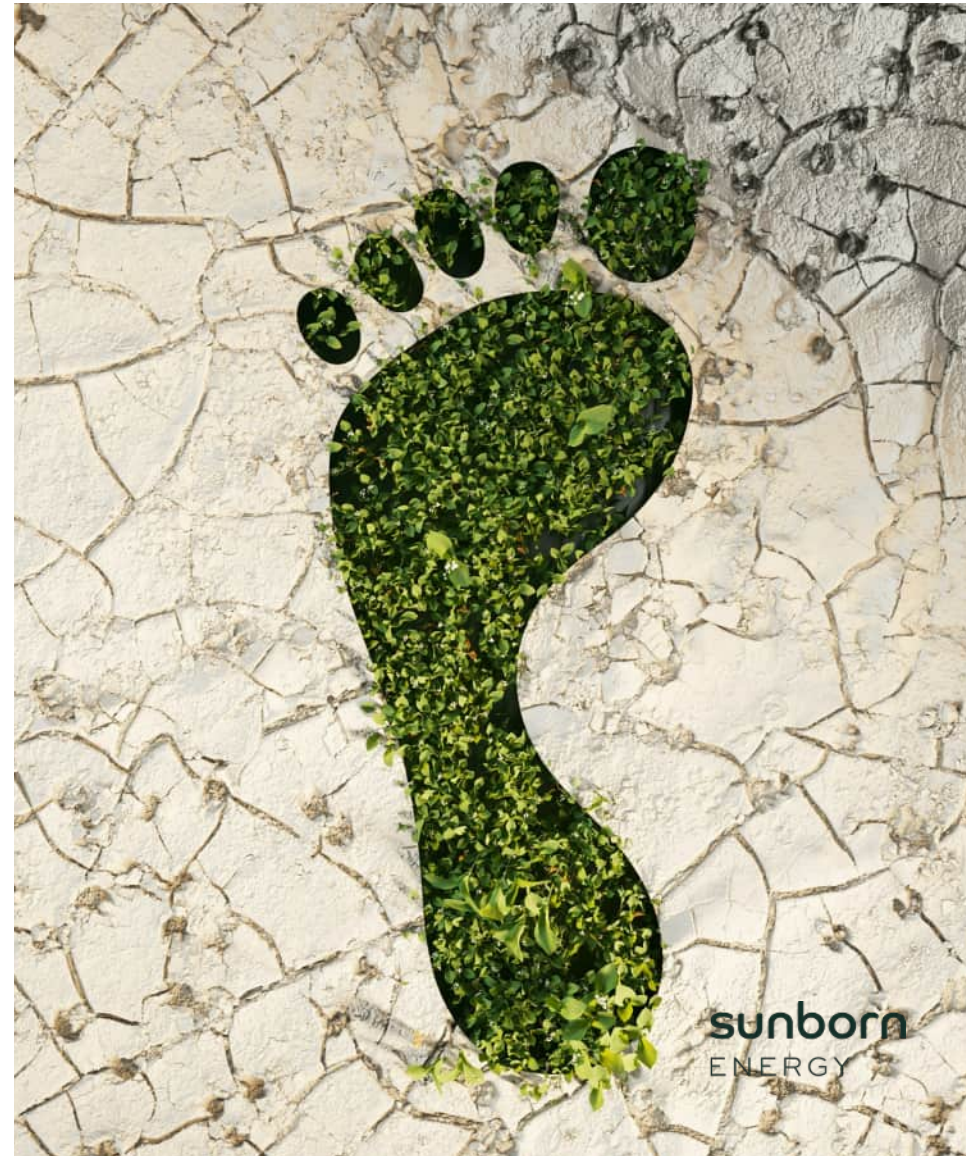


PUBLIC VIEWS (NEW DOCK)



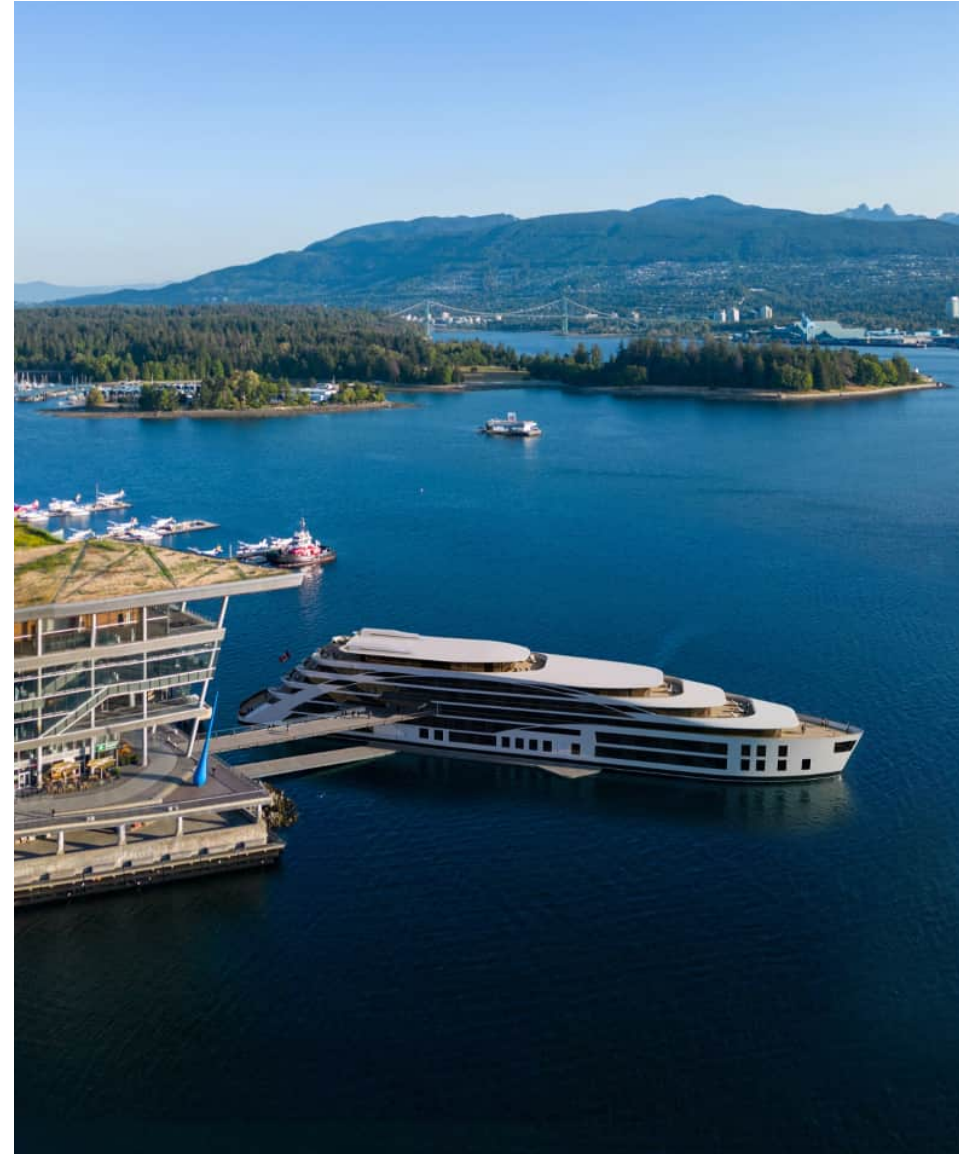
LOW CARBON DEVELOPMENT

- Powered by thermal and renewable energy
- Reduced power consumption up to 70%
- No fossil fuel use or emissions
- No water discharge
- Connected to existing VCC infrastructure



SUMMARY

- 250 hotel rooms
- 200 FTE plus indirect jobs
- Off-site construction
- Connected to VCC
- Low carbon footprint
- Publicly accessible dock
- Reinvigorates Coal Harbour waterfront



An aerial photograph of the Vancouver waterfront at sunset. The sky is a mix of orange, yellow, and light blue. The city skyline is visible on the left, with several tall buildings. In the foreground, a large white cruise ship is docked at a pier. The water is calm, reflecting the colors of the sky. In the background, there are mountains and a large body of water.

THANK YOU

sunborn
INTERNATIONAL

