








 **STRAND** YAMAMOTO ARCHITECTURE

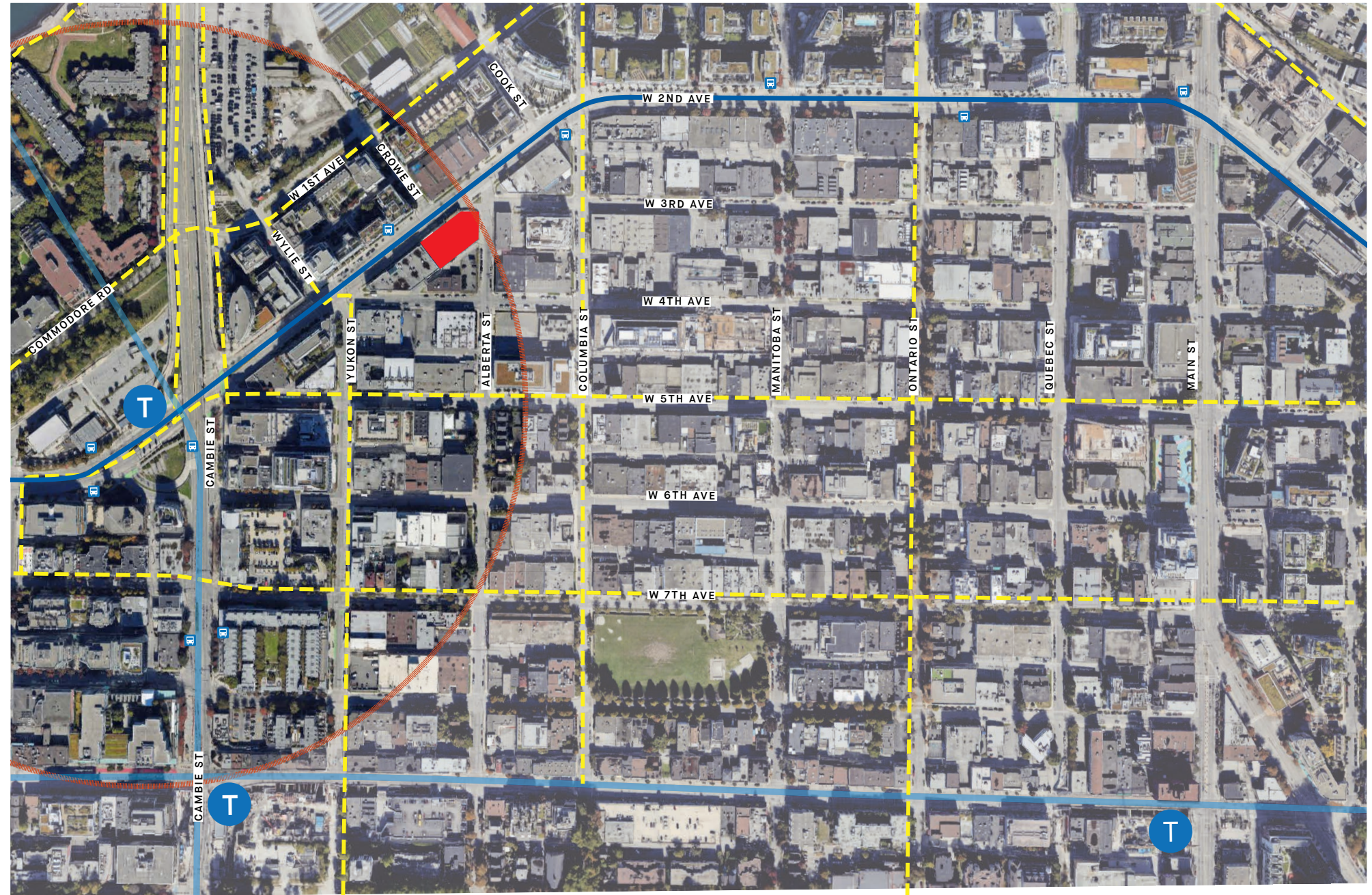
360 WEST 2ND AVENUE
PUBLIC HEARING - JANUARY 22, 2026

SITE LOCATION - PROXIMITY TO TRANSIT

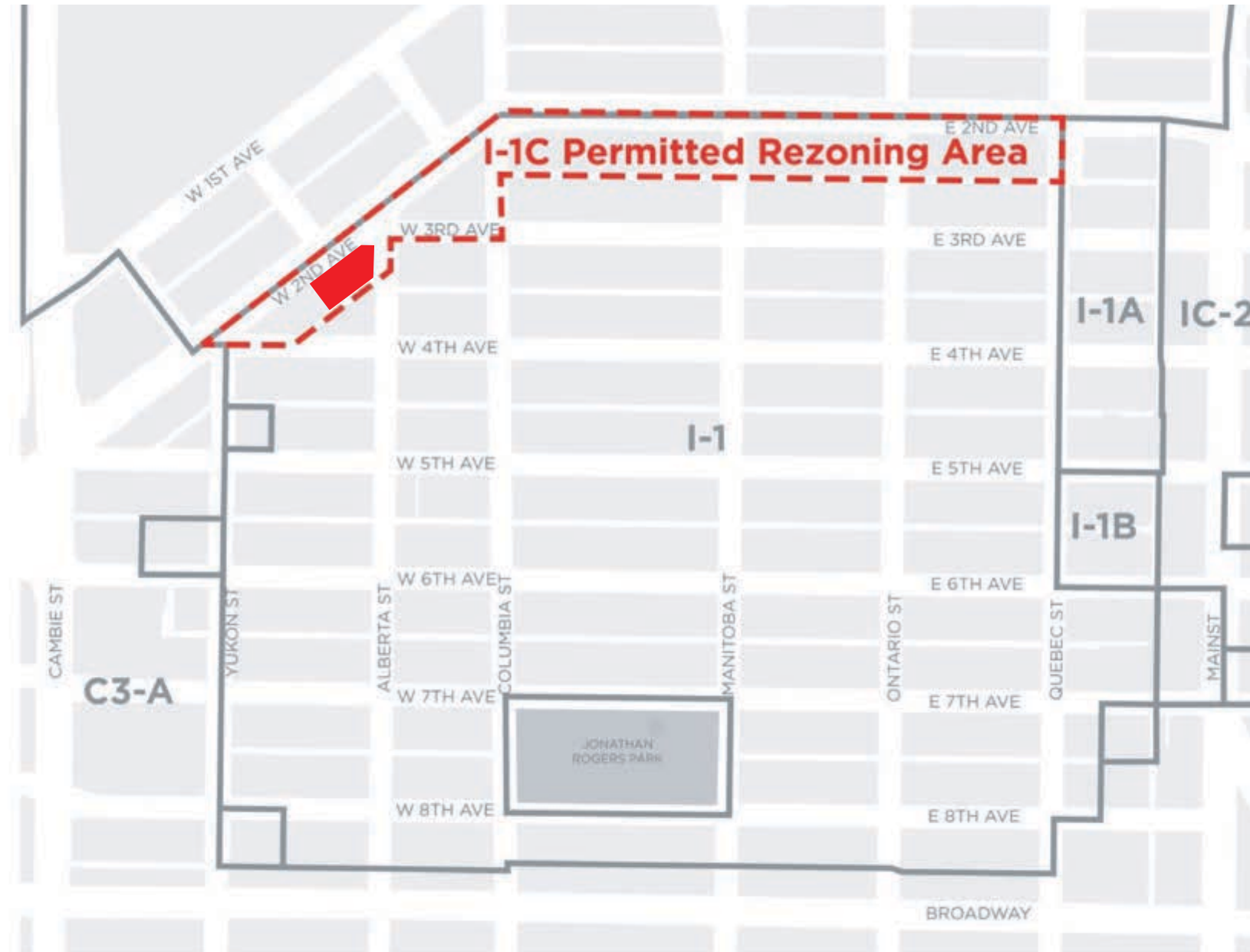


SKYTRAIN 400M RADIUS →

-  SKYTRAIN STATION
-  BUS STOP
-  FTN BUS ROUTES
-  SKYTRAIN ROUTE
-  BIKE ROUTE



I-1C PERMITTED REZONING AREA

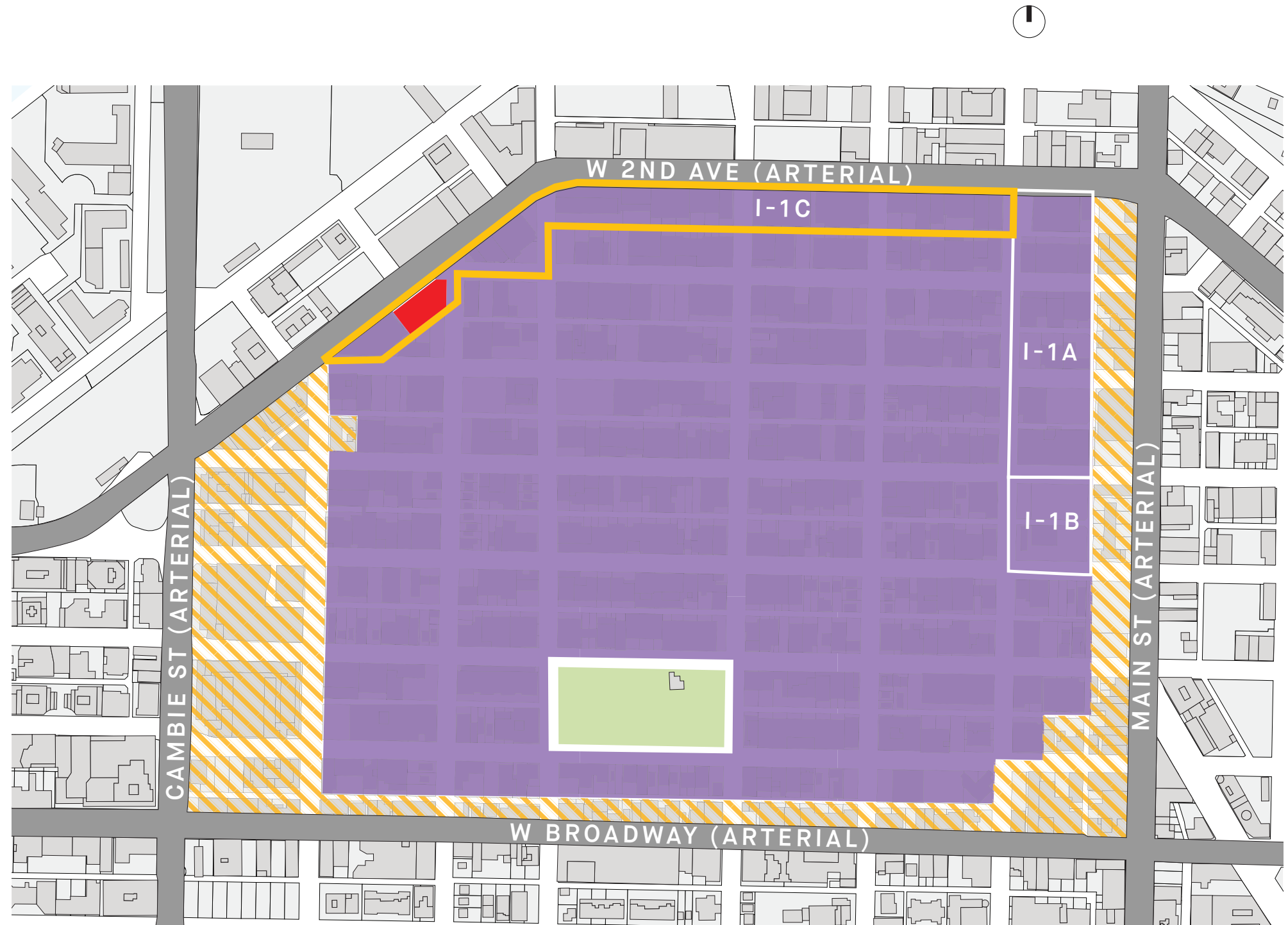


METRO 2050 LAND USE MAP

Designating the south side of West Second to General Urban would make it consistent with the other three borders around the Mount Pleasant Industrial Area

Proposal does not remove industrial use from designated area

- INDUSTRIAL DESIGNATED
- PROPOSED BUFFER AREA
- GENERAL URBAN DESIGNATED
- SUBJECT SITE
- ARTERIAL ROAD



INTERFACE OF I-10 WITH SOUTHEAST FALSE CREEK



BUILT FORM ALONG 2ND AVENUE

LOOKING EAST



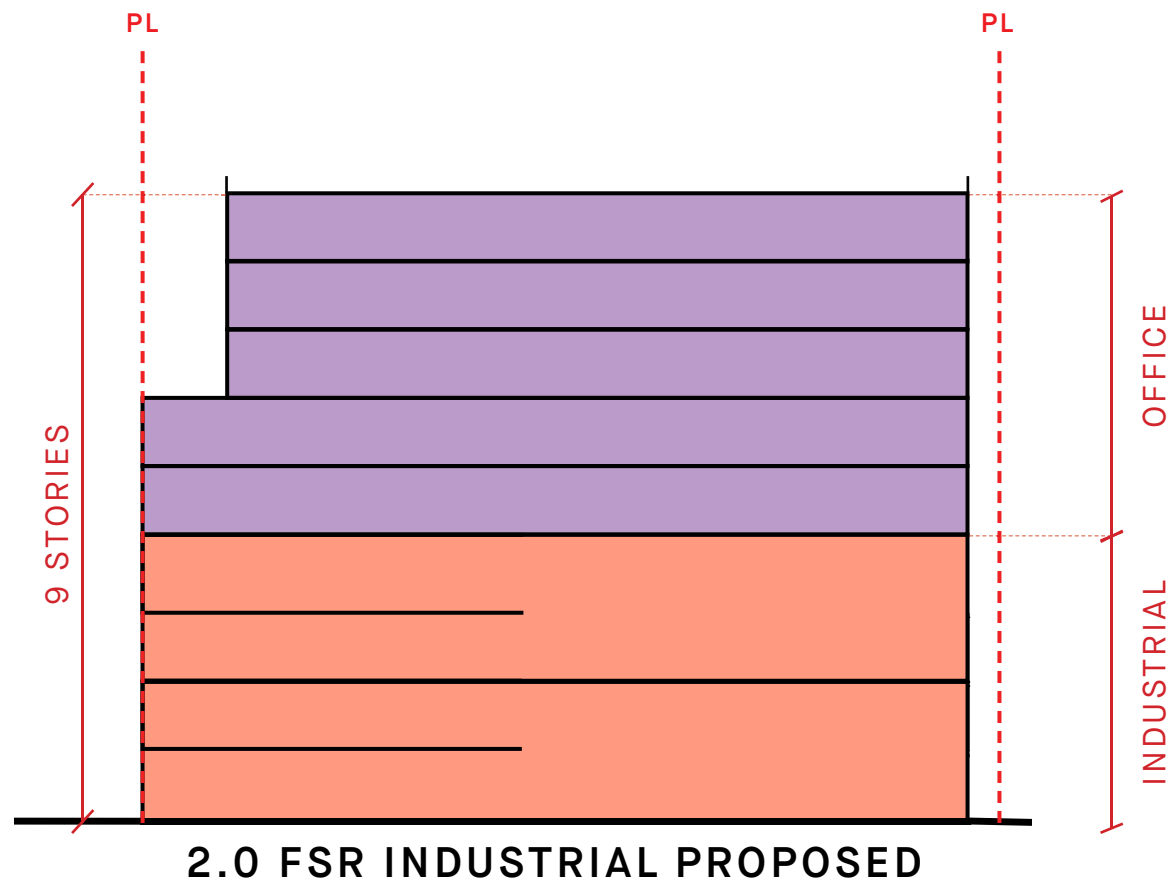
I-1C

LOOKING WEST

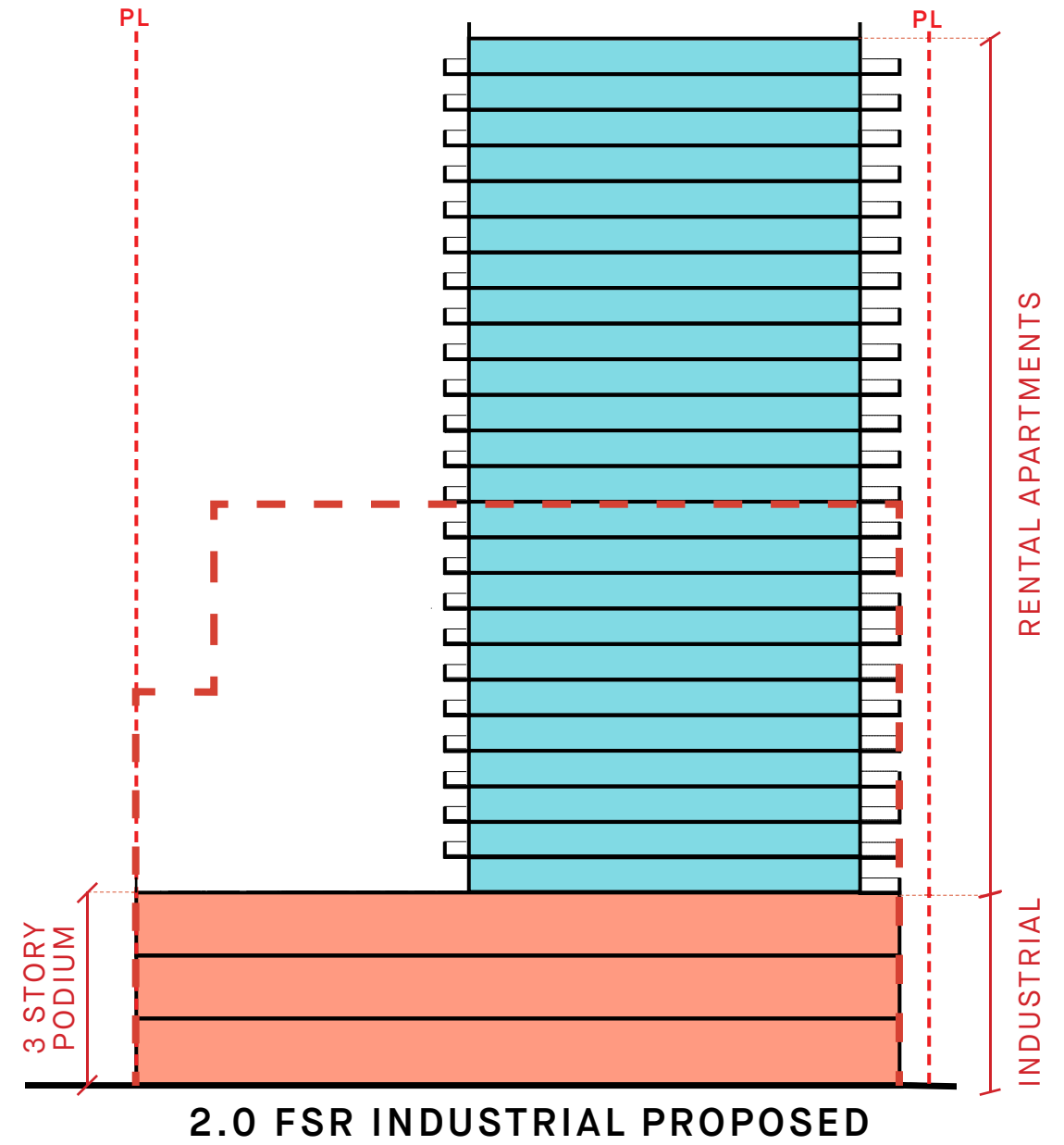


I-1C

NO LOSS OF INDUSTRIAL - COMPARATIVE SECTION



APPROVED DP MASSING
OF I1-C PROJECT



PROPOSED RZ AFTER STAFF CONDITIONS

FOR LEASE



HISTORIC MOUNT PLEASANT

View of Mount Pleasant looking northeast from City Hall 1956



source: City of Vancouver Archives

INNOVATION DISTRICTS WORLDWIDE

WICK LANE - LONDON
LIGHT INDUSTRIAL / RESIDENTIAL



HACKNEY WICK - LONDON
LIGHT INDUSTRIAL / RESIDENTIAL



INNOVATION DISTRICT WORLDWIDE

NORLINGTON ROAD - LEYTON, UK
INDUSTRIAL / RESIDENTIAL MIX-USE



WEST DONS LAND - BLOCK 8 - TORONTO
LIGHT INDUSTRIAL / RESIDENTIAL



INNOVATION DISTRICT WORLDWIDE

DE CAAI - EINDHOVEN, NL
LIGHT INDUSTRIAL / RESIDENTIAL



SQUAMISH WATERFRONT - SQUAMISH, BC
LIGHT INDUSTRIAL / RESIDENTIAL / COMMERCIAL



THANK YOU!

