

## MOTION

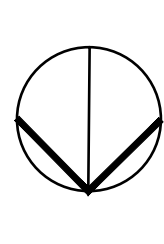
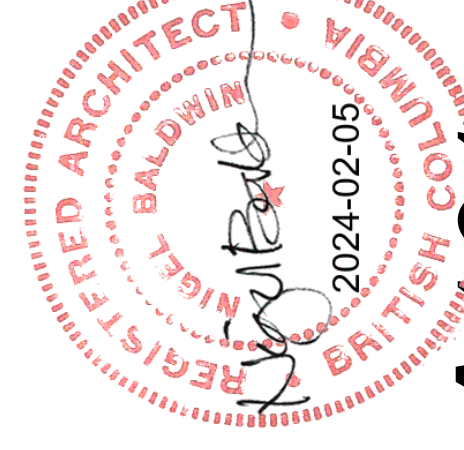
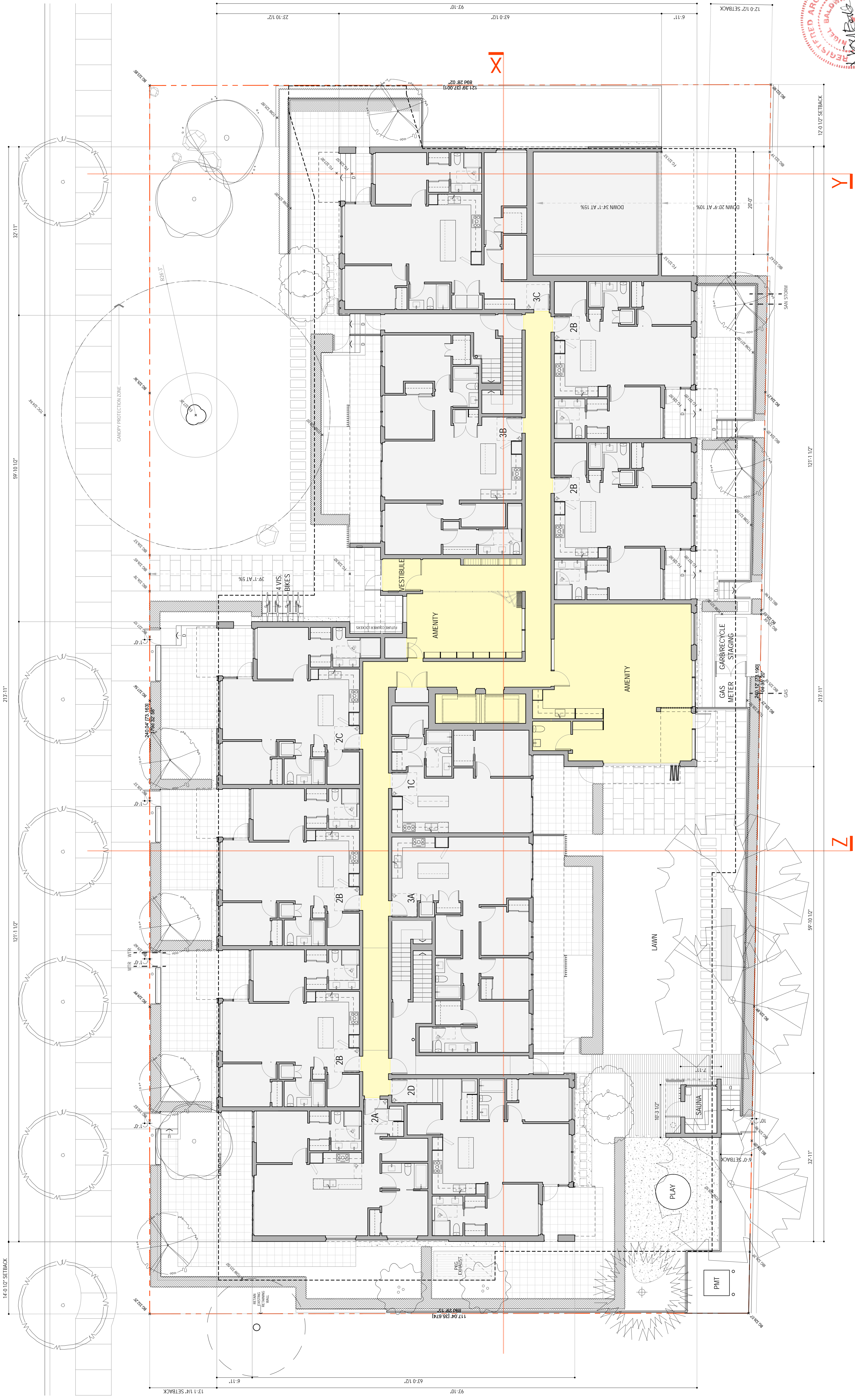
### 3. **Approval of Form of Development – 5255 Kersland Drive**

THAT the form of development for this portion of the site known as 5235-5275 Kersland Drive be approved generally as illustrated in the Development Application Number DP-2023-00711, prepared by Baldwin Architecture, and submitted electronically on February 6, 2024, provided that the Director of Planning may impose conditions and approve design changes which would not adversely affect either the development character of the site or adjacent properties.

\* \* \* \* \*

#### **Additional Background Information:**

<https://www.shapeyourcity.ca/5235-5275-kersland-dr>



**SITE PLAN**  
SCALE: 1 INCH = 8 FEET

**PRIOR TO SUBMISSION**  
5 FEBRUARY 2024

**62 APARTMENTS**  
5235-5275 KERSLAND DRIVE

**DURANTE KREUK LTD**  
LANDSCAPE ARCHITECT

**BALDWIN ARCHITECTURE**  
ARCHITECT

**LOCARNO + LISTRAOR**  
OWNER/APPLICANT

**A101**



**MATERIALS LEGEND**

- ◊ CLINKER BRICK, 12" X 3"; THIRD RUNNING BOND
- ◊ 9" FIBRE-CEMENT SHIPLAP SIDING, SMOOTH FINISH
- ◊ 3/4" FIBRE-CEMENT TRIM, EX 10" OR 12"
- ◊ PAINTED STEEL CHANNEL WITH END CAPS, -3" X 12" V / 16" H
- ◊ VINYL WINDOW / DOOR
- ◊ WOOD CLAD, GLAZED CUSTOM ENTRY DOORS
- ◊ PAINTED METAL FLASHING / FASCIA
- ◊ PAINTED ALUMINUM FRAMED, GLAZED GUARD
- ◊ PAINTED ALUMINUM PICKET GUARD / FENCE / TRELLIS / GATE
- ◊ PAINTED METAL PLANTER
- ◊ SEALED ARCHITECTURAL CONCRETE
- ◊ WOODLOOK SOFFIT
- ◊ STANDING SEAMI METAL CLADDING, 12" RIB
- ◊ STAINED WOOD SIDING

**LOCARNO + LISTRAOR**  
OWNER/APPLICANT

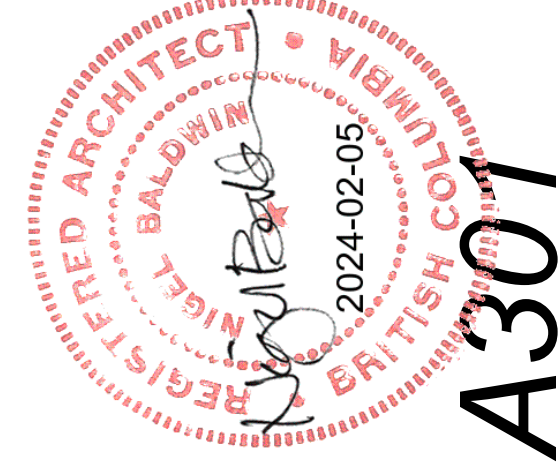
**BALDWIN ARCHITECTURE**  
ARCHITECT

**DURANTE KREUK LTD**  
LANDSCAPE ARCHITECT

**62 APARTMENTS**  
5235-5275 KERSLAND DRIVE

**PRIOR-TO SUBMISSION**  
5 FEBRUARY 2024

**EAST ELEVATION**  
SCALE: 1 INCH = 8 FEET





SCREEN	369.41'
PARAPET	362.41'
LEVEL 5	371.08'
LEVEL 4	360.00'
LEVEL 3	349.84'
LEVEL 2	339.67'
LEVEL 1	328.50'
PARKING 1	314.50'
PARKING 2	305.17'
PKG 2 SW	298.52'

**MATERIALS LEGEND**

- ① CLINKER BRICK, 12" X 3", THIRD RUNNING BOND
- ② 9" FIBRE-CEMENT SHIPLAP SIDING, SMOOTH FINISH
- ③ 3/4" FIBRE-CEMENT TRIM, EX 10" OR 12"
- ④ PAINTED STEEL CHANNEL WITH END CAPS, -3" X 12"V / 16"H
- ⑤ VINYL WINDOW / DOOR
- ⑥ WOOD CLAD, GLAZED CUSTOM ENTRY DOORS
- ⑦ PAINTED METAL FLASHING / FASCIA
- ⑧ PAINTED ALUMINUM FRAMED, GLAZED GUARD
- ⑨ PAINTED ALUMINUM PICKET GUARD / FENCE / TRELIS / GATE
- ⑩ PAINTED METAL PLANTER
- ⑪ SEALED ARCHITECTURAL CONCRETE
- ⑫ WOODLOOK SOFFIT
- ⑬ STANDING SEAMI METAL CLADDING, 12" RIB
- ⑭ STAINED WOOD SIDING

**LOCARNO + LISTRAOR**  
OWNER/APPLICANT

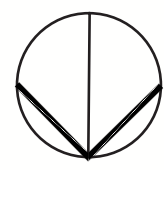
**BALDWIN ARCHITECTURE**  
ARCHITECT

**DURANTE KREUK LTD**  
LANDSCAPE ARCHITECT

**62 APARTMENTS**  
5235-5275 KERSLAND DRIVE

**PRIOR-TO SUBMISSION**  
5 FEBRUARY 2024

**SOUTH ELEVATION**  
SCALE: 1 INCH = 8 FEET

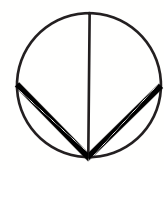
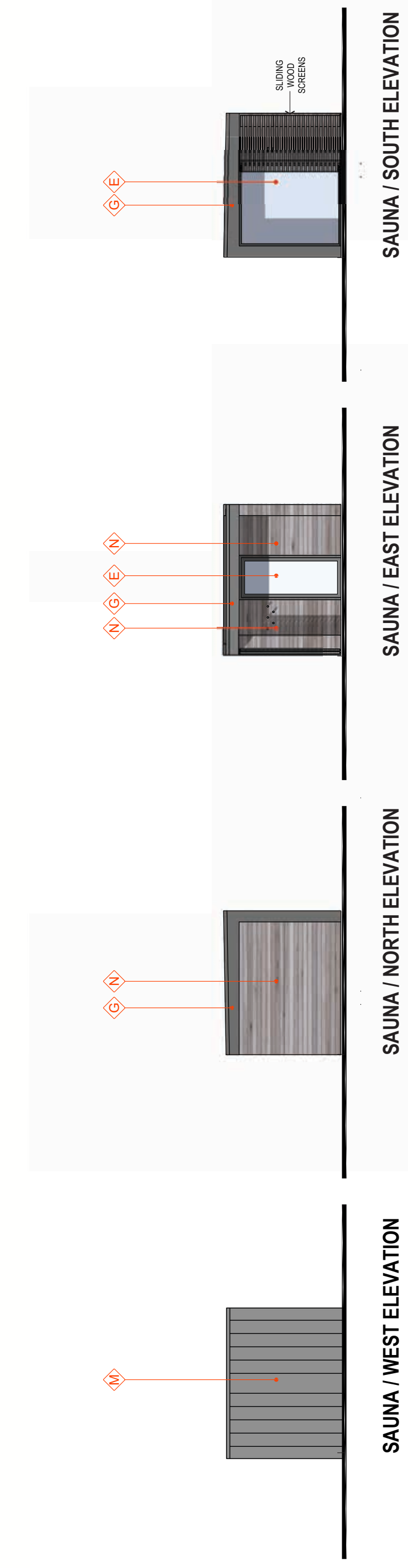


**A302**



**MATERIALS LEGEND**

- ◇ CLINKER BRICK, 12" X 3", THIRD RUNNING BOND
- ◊ 9" FIBRE-CEMENT SHIPLAP SIDING, SMOOTH FINISH
- ◊ 3/4" FIBRE-CEMENT TRIM, EX 10" OR 12"
- ◊ PAINTED STEEL CHANNEL WITH END CAPS, -3" X 12"V / 16"H
- ◊ VINYL WINDOW / DOOR
- ◊ WOOD CLAD, GLAZED CUSTOM ENTRY DOORS
- ◊ PAINTED METAL FLASHING / FASCIA
- ◊ PAINTED ALUMINUM FRAMED, GLAZED GUARD
- ◊ PAINTED ALUMINUM PICKET GUARD / FENCE / TRELLIS / GATE
- ◊ PAINTED METAL PLANTER
- ◊ SEALED ARCHITECTURAL CONCRETE
- ◊ WOOD-LOOK SOFFIT
- ◊ STANDING SEAMI METAL CLADDING, 12" RIB
- ◊ STAINED WOOD SIDING





SCREEN	369.41'
PARAPET	362.41'
	11.4'
LEVEL 5	371.08'
	11.1'
LEVEL 4	360.00'
	10.2'
LEVEL 3	349.84'
	10.2'
LEVEL 2	339.67'
	2.11'
LEVEL 1	328.50'
	14.0'
PARKING 1	314.50'
	9.4'
PARKING 2	305.17'
	6.7.346'
PKG 2 SW	298.52'

**MATERIALS LEGEND**

- ◇ CLINKER BRICK, 12" X 3", THIRD RUNNING BOND
- ⊕ 9" FIBRE-CEMENT SHIPLAP SIDING, SMOOTH FINISH
- ⊕ 3/4" FIBRE-CEMENT TRIM, EX 10" OR 12"
- ⊕ PAINTED STEEL CHANNEL WITH END CAPS, -3" X 12"V / 16"H
- ⊕ VINYL WINDOW / DOOR
- ⊕ WOOD CLAD, GLAZED CUSTOM ENTRY DOORS
- ⊕ PAINTED METAL FLASHING / FASCIA
- ⊕ PAINTED ALUMINUM FRAMED, GLAZED GUARD
- ⊕ PAINTED ALUMINUM PICKET GUARD / FENCE / TRELLIS / GATE
- ⊕ PAINTED METAL PLANTER
- ⊕ SEALED ARCHITECTURAL CONCRETE
- ⊕ WOODLOOK SOFFIT
- ⊕ STANDING SEAMI METAL CLADDING, 12" RIB
- ⊕ STAINED WOOD SIDING

**LOCARNO + LISTRAOR**  
OWNER/APPLICANT

**BALDWIN ARCHITECTURE**  
ARCHITECT

**DURANTE KREUK LTD**  
LANDSCAPE ARCHITECT

**62 APARTMENTS**  
5235-5275 KERSLAND DRIVE

**PRIOR-TO SUBMISSION**  
5 FEBRUARY 2024

**WEST ELEVATION**  
SCALE: 1 INCH = 8 FEET

