

RESOLUTION

5. **Arbutus Greenway – Establishment of City Land for Street and Public Space Purposes**

WHEREAS

1. The City of Vancouver is the owner of all streets and lanes lying within the limits of the City of Vancouver;
2. The registered owner, the City of Vancouver, wishes to establish all parcels of the Arbutus Greenway for road purposes in the City of Vancouver, Province of British Columbia, more particularly known and described as follows:
 - a. Parcel Identifier: _____
Lot 1, District Lot 526, Group 1, New Westminster District, Plan EPP127612;
 - b. Parcel Identifier: _____
Lot A, District Lot 526, Group 1, New Westminster District, Plan EPP127614;
 - c. Parcel Identifier: _____
Lot B, District Lot 526, Group 1, New Westminster District, Plan EPP127615;
 - d. Parcel Identifier: _____
Lot C, District Lot 526, Group 1, New Westminster District, Plan EPP127616;
 - e. Parcel Identifier: _____
Lot D, District Lot 526, Group 1, New Westminster District, Plan EPP127617;
 - f. Parcel Identifier: _____
Lot E, District Lot 526, Group 1, New Westminster District, Plan EPP127618;
 - g. Parcel Identifier: _____
Lot F, District Lot 526, Group 1, New Westminster District, Plan EPP127619;
 - h. Parcel Identifier: 023-895-519
That Part of Lot 2 Shown Red on Plan 1137 Block 325 District Lot 526 Group 1 New Westminster District Plan 590;
 - i. Parcel Identifier: 023-895-578
That Part of Lot 3 Shown Red on Plan 1137 Block 325 District Lot 526 Group 1 New Westminster District Plan 590;

- j. Parcel Identifier: 023-895-756
That Part of Lot 18 Shown Red on Plan 1137 Block 325 District Lot 526
Group 1 New Westminster District Plan 590;
- k. Parcel Identifier: 023-895-837
That Part of Lot 19 Shown Red on Plan 1137 Block 325 District Lot 526
Group 1 New Westminster District Plan 590;
- l. Parcel Identifier: 031-641-024
Lot A, District Lot 526, Group 1, New Westminster District, Plan
EPP111952;
- m. Parcel Identifier: 031-641-032
Lot B, District Lot 526, Group 1, New Westminster District, Plan
EPP111952;
- n. Parcel Identifier: 031-641-041
Lot C, District Lot 526, Group 1, New Westminster District, Plan
EPP111952;
- o. Parcel Identifier: 031-641-059
Lot D, District Lot 526, Group 1, New Westminster District, Plan
EPP111952;
- p. Parcel Identifier: 031-641-067
Lot E, District Lot 526, Group 1, New Westminster District, Plan
EPP111952;
- q. Parcel Identifier: 031-641-075
Lot F, District Lot 526, Group 1, New Westminster District, Plan
EPP111952;
- r. Parcel Identifier: 031-641-083
Lot G, District Lot 526, Group 1, New Westminster District, Plan
EPP111952;
- s. Parcel Identifier: 031-641-091
Lot H, District Lot 526, Group 1, New Westminster District, Plan
EPP111952;
- t. Parcel Identifier: 031-641-105
Lot I, District Lot 526, Group 1, New Westminster District, Plan
EPP111952;
- u. Parcel Identifier: 031-641-113
Lot J, District Lot 526, Group 1, New Westminster District, Plan
EPP111952;
- v. Parcel Identifier: 031-641-121
Lot K, District Lot 526, Group 1, New Westminster District, Plan
EPP111952;
- w. Parcel Identifier: 031-641-130
Lot L, District Lot 526, Group 1, New Westminster District, Plan
EPP111952;

- x. Parcel Identifier: 031-641-148
Lot M, District Lot 526, Group 1, New Westminster District, Plan EPP111952;
- y. Parcel Identifier: 027-269-175
Parcel A, District Lot 526, Group 1, New Westminster District, Plan BCP31964;
- z. Parcel Identifier: 025-028-766
Parcel H, Block A, District Lot 325A, Group 1, New Westminster District, Plan LMP49716;
- aa. Parcel Identifier: 025-028-774
Parcel G, Block B, District Lot 325A, Group 1, New Westminster District, Plan LMP49716;
- bb. Parcel Identifier: 025-057-791
Parcel A, District Lot 317, Group 1, New Westminster District, Plan LMP48656;
- cc. Parcel Identifier: 025-094-483
Parcel B, District Lot 325, Group 1, New Westminster District, Plan LMP49196;
- dd. Parcel Identifier: 025-094-505
Parcel C, District Lot 325, Block 4, Group 1, New Westminster District, Plan LMP49196;
- ee. Parcel Identifier: 025-094-572
Parcel D, District Lot 325, Block 5, New Westminster District, Plan LMP49196;
- ff. Parcel Identifier: 025-094-599
Parcel E, District Lot 325, Block 6, New Westminster District, Plan LMP49196;
- gg. Parcel Identifier: 025-094-611
Parcel F, District Lot 325, Block 6, New Westminster District, Plan LMP49196;
- hh. Parcel Identifier: 029-781-965
All That Part of Parcel G, District Lot 318, Group 1, New Westminster District, Plan LMP52922 as Shown as Area 0.479HA on Plan EPP59724;
- ii. Parcel Identifier: 029-781-973
All That Part of Parcel G, District Lot 318, Group 1, New Westminster District, Plan LMP52922 as Shown as 0.388HA on Plan EPP59724;
- jj. Parcel Identifier: 028-138-341
Block I District Lot 318 Group 1 New Westminster District as Shown on Plan EPP98084;

AND WHEREAS it is deemed expedient and in the public interest to allocate the said lands for road purposes.

THEREFORE BE IT RESOLVED THAT all the above described lands are hereby allocated for road purposes and declared to form and to constitute a portion or portions of road.

(Arbutus Greenway – Establishment of City Land for Street and Public Space Purposes (RTS 14959), as per Council authority May 28, 2024)

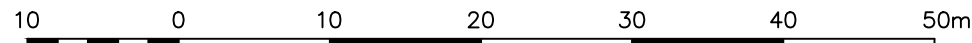
* * * * *

REFERENCE PLAN OF THOSE PARTS OF LOTS 9 TO 20 SHOWN RED ON PLAN 1137, BLOCK 269, DISTRICT LOT 526, GROUP 1, NEW WESTMINSTER DISTRICT, PLAN 590

PLAN EPP127612

PURSUANT TO SECTION 100(1)(b) OF THE LAND TITLE ACT

BCGS 92G.025



ALL DISTANCES ARE IN METRES AND DECIMALS THEREOF.

THE INTENDED PLOT SIZE OF THIS PLAN IS 560mm IN WIDTH BY 432mm IN HEIGHT (C SIZE) WHEN PLOTTED AT A SCALE OF 1:500.

LEGEND

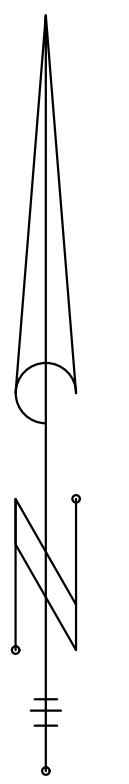
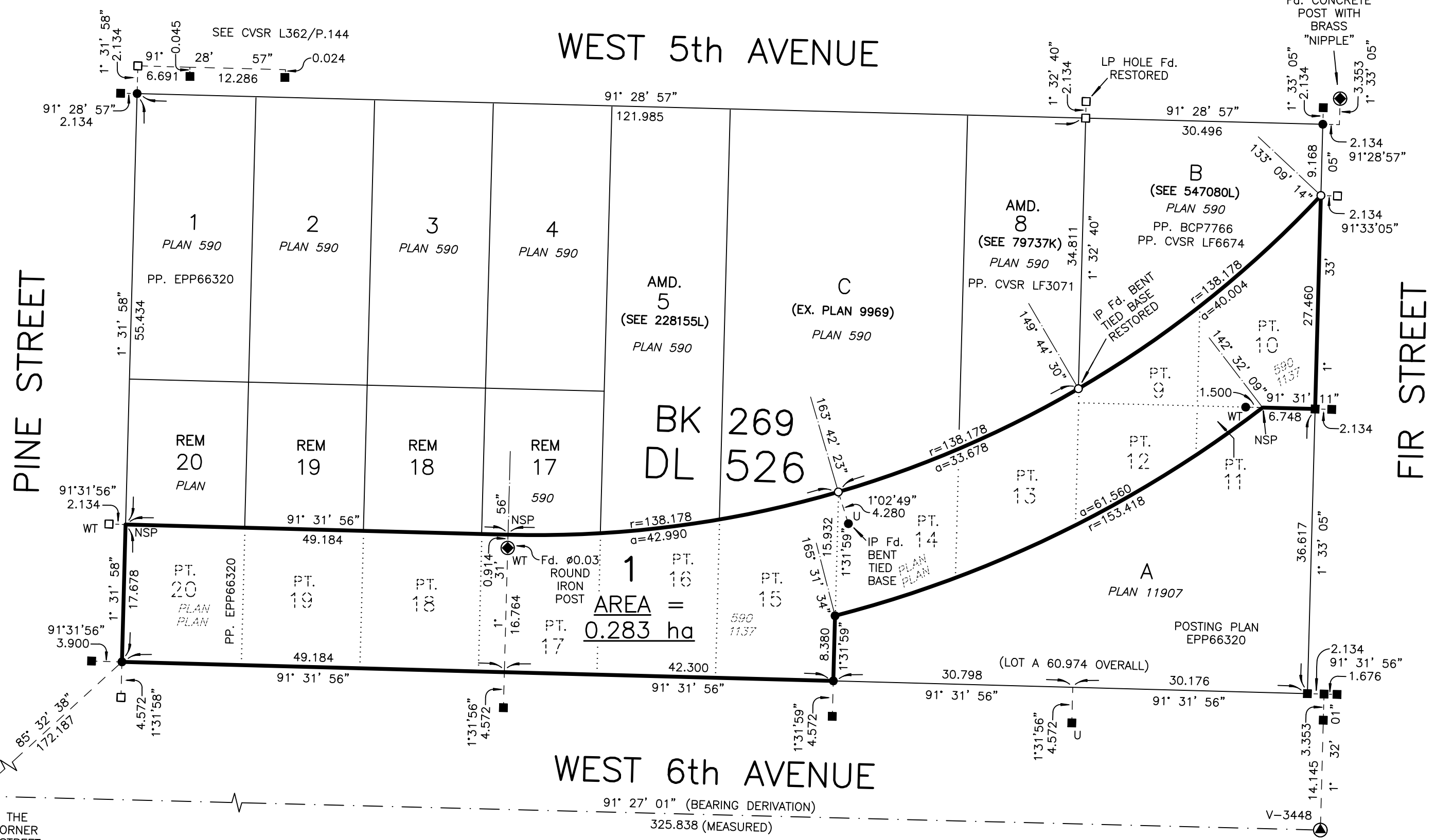
- ⊙ INDICATES CONTROL MONUMENT FOUND
- INDICATES LEAD PLUG FOUND
- INDICATES LEAD PLUG PLACED
- INDICATES STANDARD IRON POST FOUND
- INDICATES STANDARD IRON POST PLACED
- ⊙ INDICATES NON-STANDARD POST FOUND
- U INDICATES UNKNOWN ORIGIN
- CVSR INDICATES CITY OF VANCOUVER SURVEY RECORDS
- AMD. INDICATES AMENDED
- EX. INDICATES EXPLANATORY
- PT. INDICATES PART OF
- PP. INDICATES POSTING PLAN
- LP INDICATES LEAD PLUG
- BK INDICATES BLOCK
- WT INDICATES WITNESS
- NSP INDICATES NOT SUITABLE FOR POSTING

THIS PLAN LIES WITHIN INTEGRATED SURVEY AREA No.31, CITY OF VANCOUVER, NAD83(CSRS) 4.0.0.BC.1.MVRD.

GRID BEARINGS ARE DERIVED FROM OBSERVATIONS BETWEEN GEODETIC CONTROL MONUMENTS V-3448 AND V-3445 AND ARE REFERRED TO THE CENTRAL MERIDIAN OF UTM ZONE 10.

THE UTM COORDINATES AND ESTIMATED ABSOLUTE ACCURACY ACHIEVED ARE DERIVED FROM THE MASCOT PUBLISHED COORDINATES AND STANDARD DEVIATIONS FOR GEODETIC CONTROL MONUMENTS V-3448 AND V-3445.

THIS PLAN SHOWS HORIZONTAL GROUND-LEVEL DISTANCES, UNLESS OTHERWISE SPECIFIED. TO COMPUTE GRID DISTANCES, MULTIPLY GROUND-LEVEL DISTANCES BY THE AVERAGE COMBINED FACTOR OF 0.9996010. THE AVERAGE COMBINED FACTOR HAS BEEN DETERMINED BASED ON GEODETIC CONTROL MONUMENT V-3448.



- NOTES:
- THIS PLAN SHOWS ONE OR MORE WITNESS POSTS WHICH ARE NOT SET ON THE TRUE CORNER(S).
 - FOR CLARITY PURPOSES CERTAIN OFFSET LINES ARE NOT TO SCALE.
 - WITNESS POSTS AND OFFSET POSTS ARE ON PROPERTY LINE OR PROPERTY LINE PRODUCTION UNLESS OTHERWISE NOTED.

UTM ZONE 10 NAD83(CSRS) 4.0.0.BC.1.MVRD COORDINATES			
GCM	NORTHING	EASTING	ABSOLUTE ACCURACY
V-3448	5,457,053.879	489,739.453	0.008
V-3445	5,457,062.123	489,413.830	0.008

THE FIELD SURVEY REPRESENTED BY THIS PLAN WAS COMPLETED ON THE 3rd DAY OF MARCH, 2023.

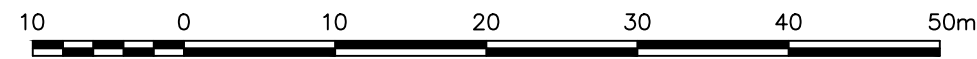
TAYLOR D. KAGEL, BCLS #1014

THIS PLAN LIES WITHIN THE METRO VANCOUVER REGIONAL DISTRICT

REFERENCE PLAN OF THOSE PARTS OF LOTS 11 TO 20 SHOWN RED ON PLAN 1137, BLOCK 268, DISTRICT LOT 526, GROUP 1, NEW WESTMINSTER DISTRICT, PLAN 590

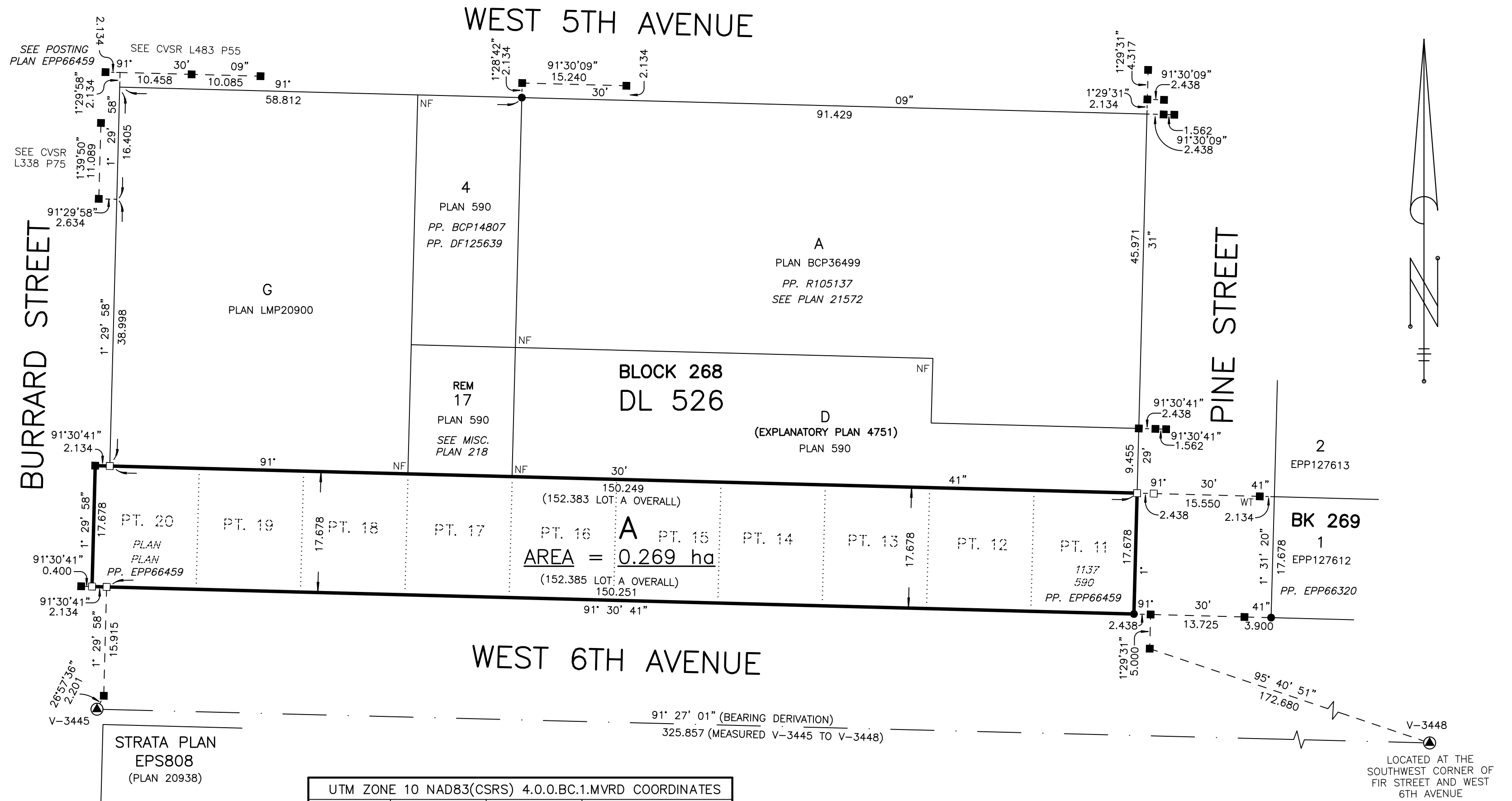
PLAN EPP127614

PURSUANT TO SECTION 100(1)(b) OF THE LAND TITLE ACT
BCGS 92G.025



ALL DISTANCES ARE IN METRES AND DECIMALS THEREOF.

THE INTENDED PLOT SIZE OF THIS PLAN IS 560mm IN WIDTH BY
432mm IN HEIGHT (C SIZE) WHEN PLOTTED AT A SCALE OF 1:500.



LEGEND

- ▲ INDICATES CONTROL MONUMENT FOUND
- INDICATES LEAD PLUG FOUND
- INDICATES LEAD PLUG PLACED
- INDICATES STANDARD IRON POST FOUND
- CVSR INDICATES CITY OF VANCOUVER SURVEY RECORDS
- PT. INDICATES PART OF
- PP. INDICATES POSTING PLAN
- MISC. INDICATES MISCELLANEOUS
- BK INDICATES BLOCK
- NF INDICATES NOTHING FOUND
- WT INDICATES WITNESS

UTM ZONE 10 NAD83(CSRS) 4.0.0.BC.1.MVRD COORDINATES			
GCM	NORTHING	EASTING	ABSOLUTE ACCURACY
V-3445	5,457,062.123	489,413.830	0.008
V-3448	5,457,053.879	489,739.453	0.008

NOTES:

- THIS PLAN SHOWS ONE OR MORE WITNESS POSTS WHICH ARE NOT SET ON THE TRUE CORNER(S).
- FOR CLARITY PURPOSES CERTAIN OFFSET LINES ARE NOT TO SCALE.
- WITNESS POSTS AND OFFSET POSTS ARE ON PROPERTY LINE OR PROPERTY LINE PRODUCTION UNLESS OTHERWISE NOTED.

THIS PLAN LIES WITHIN INTEGRATED SURVEY AREA No.31, CITY OF VANCOUVER, NAD83(CSRS) 4.0.0.BC.1.MVRD.

GRID BEARINGS ARE DERIVED FROM OBSERVATIONS BETWEEN GEODETIC CONTROL MONUMENTS V-3445 AND V-3448 AND ARE REFERRED TO THE CENTRAL MERIDIAN OF UTM ZONE 10.

THE UTM COORDINATES AND ESTIMATED ABSOLUTE ACCURACY ACHIEVED ARE DERIVED FROM THE MASCOT PUBLISHED COORDINATES AND STANDARD DEVIATIONS FOR GEODETIC CONTROL MONUMENTS V-3445 AND V-3448.

THIS PLAN SHOWS HORIZONTAL GROUND-LEVEL DISTANCES, UNLESS OTHERWISE SPECIFIED. TO COMPUTE GRID DISTANCES, MULTIPLY GROUND-LEVEL DISTANCES BY THE AVERAGE COMBINED FACTOR OF 0.9996007. THE AVERAGE COMBINED FACTOR HAS BEEN DETERMINED BASED ON GEODETIC CONTROL MONUMENT V-3445.

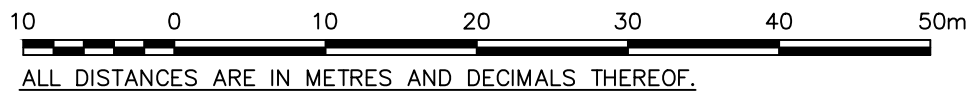
THE FIELD SURVEY REPRESENTED BY THIS PLAN WAS COMPLETED ON THE 11th DAY OF APRIL, 2024.

TAYLOR D. KAGEL, BCLS #1014

THIS PLAN LIES WITHIN THE METRO VANCOUVER REGIONAL DISTRICT

REFERENCE PLAN OF: THOSE PARTS OF LOTS 11 TO 15 INCLUSIVE
 AND 17 TO 20 INCLUSIVE SHOWN RED ON PLAN 1137; AND
 THE SOUTH 58 FEET OF LOT 16;
 ALL OF BLOCK 267, DISTRICT LOT 526, GROUP 1,
 NEW WESTMINSTER DISTRICT, PLAN 590

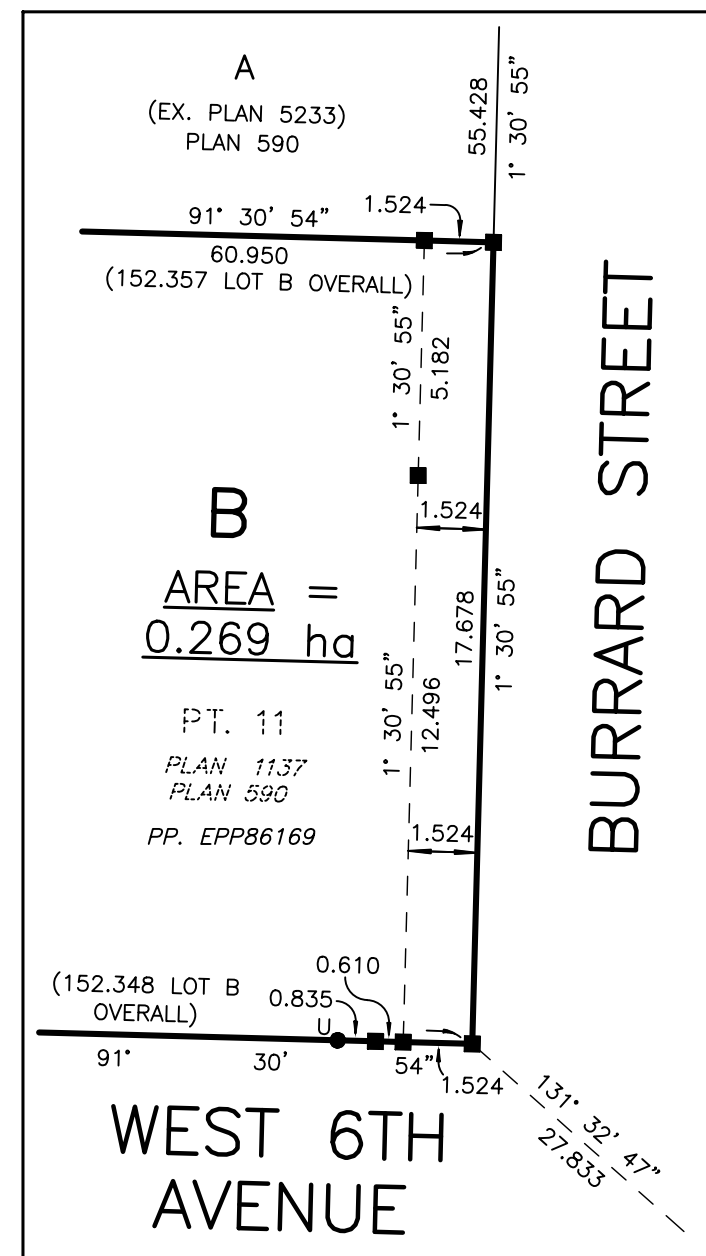
PURSUANT TO SECTION 100(1)(b) OF THE LAND TITLE ACT
 BCGS 92G.025



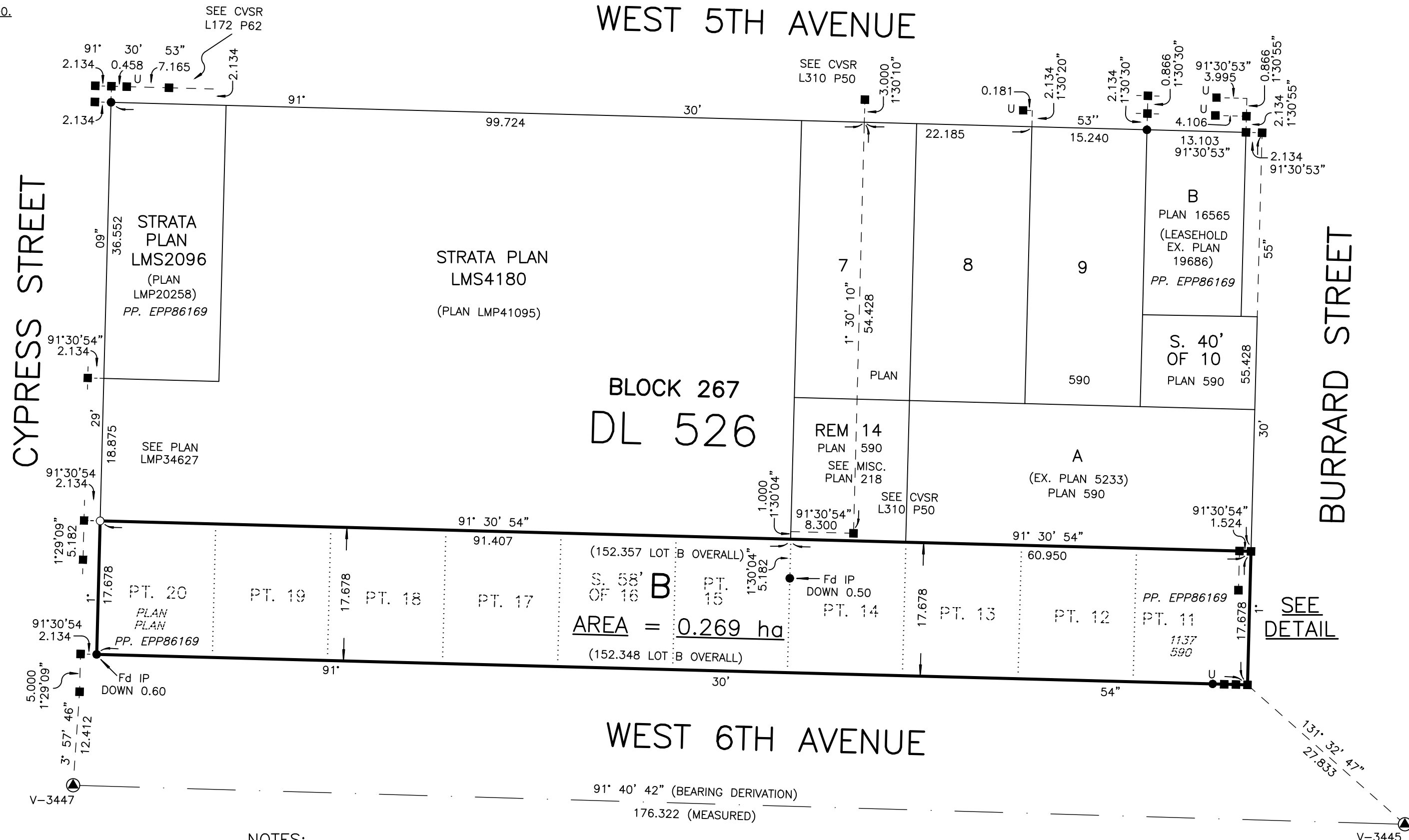
THE INTENDED PLOT SIZE OF THIS PLAN IS 560mm IN WIDTH BY
 432mm IN HEIGHT (C SIZE) WHEN PLOTTED AT A SCALE OF 1:500.

LEGEND

- ▲ INDICATES CONTROL MONUMENT FOUND
- INDICATES LEAD PLUG FOUND
- INDICATES STANDARD IRON POST FOUND
- INDICATES STANDARD IRON POST PLACED
- U INDICATES UNKNOWN ORIGIN
- CVSR INDICATES CITY OF VANCOUVER SURVEY RECORDS
- EX. INDICATES EXPLANATORY
- PP. INDICATES POSTING PLAN
- PT INDICATES PART OF
- MISC. INDICATES MISCELLANEOUS



DETAIL
 NOT TO SCALE



NOTES:

- THIS PLAN LIES WITHIN INTEGRATED SURVEY AREA NO. 31, CITY OF VANCOUVER, NAD83 (CSRS) [4.0.0.BC.1.MVRD].
- GRID BEARINGS ARE DERIVED FROM OBSERVATIONS BETWEEN GEODETIC CONTROL MONUMENTS V-3447 AND V-3445 AND ARE REFERRED TO THE CENTRAL MERIDIAN OF UTM ZONE 10.
- THIS PLAN SHOWS HORIZONTAL GROUND-LEVEL DISTANCES, UNLESS OTHERWISE SPECIFIED. TO COMPUTE GRID DISTANCES, MULTIPLY GROUND-LEVEL DISTANCES BY THE AVERAGE COMBINED FACTOR OF 0.9996003. THE AVERAGE COMBINED FACTOR HAS BEEN DETERMINED BASED ON GEODETIC CONTROL MONUMENT V-3447 AND V-3445.
- THE UTM COORDINATES AND ESTIMATED ABSOLUTE ACCURACY ACHIEVED ARE DERIVED FROM THE MASCOT-PUBLISHED COORDINATES AND STANDARD DEVIATIONS FOR GEODETIC CONTROL MONUMENTS V-3447 AND V-3445.
- THIS PLAN SHOWS ONE OR MORE WITNESS POSTS WHICH ARE NOT SET ON THE TRUE CORNER(S).
- WITNESS POSTS AND OFFSET POSTS ARE ON PROPERTY LINE OR PROPERTY LINE PRODUCTION UNLESS OTHERWISE NOTED.
- FOR CLARITY PURPOSES CERTAIN OFFSET LINES ARE NOT TO SCALE.
- LOT CREATED ON THIS PLAN IS A CONTINUATION OF AN EXISTING NUMBERING SERIES.

UTM ZONE 10 NAD83(CSRS) 4.0.0.BC.1.MVRD COORDINATES			
GCM	NORTHING	EASTING	ABSOLUTE ACCURACY
V-3447	5,457,067.285	489,237.668	0.008
V-3445	5,457,062.123	489,413.830	0.008

THE FIELD SURVEY REPRESENTED BY THIS PLAN WAS COMPLETED
 ON THE 11th DAY OF APRIL, 2024.

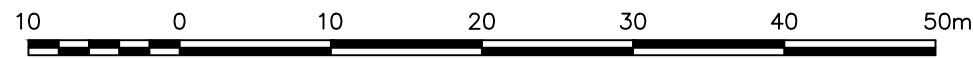
TAYLOR D. KAGEL, BCLS #1014

THIS PLAN LIES WITHIN THE METRO VANCOUVER REGIONAL DISTRICT



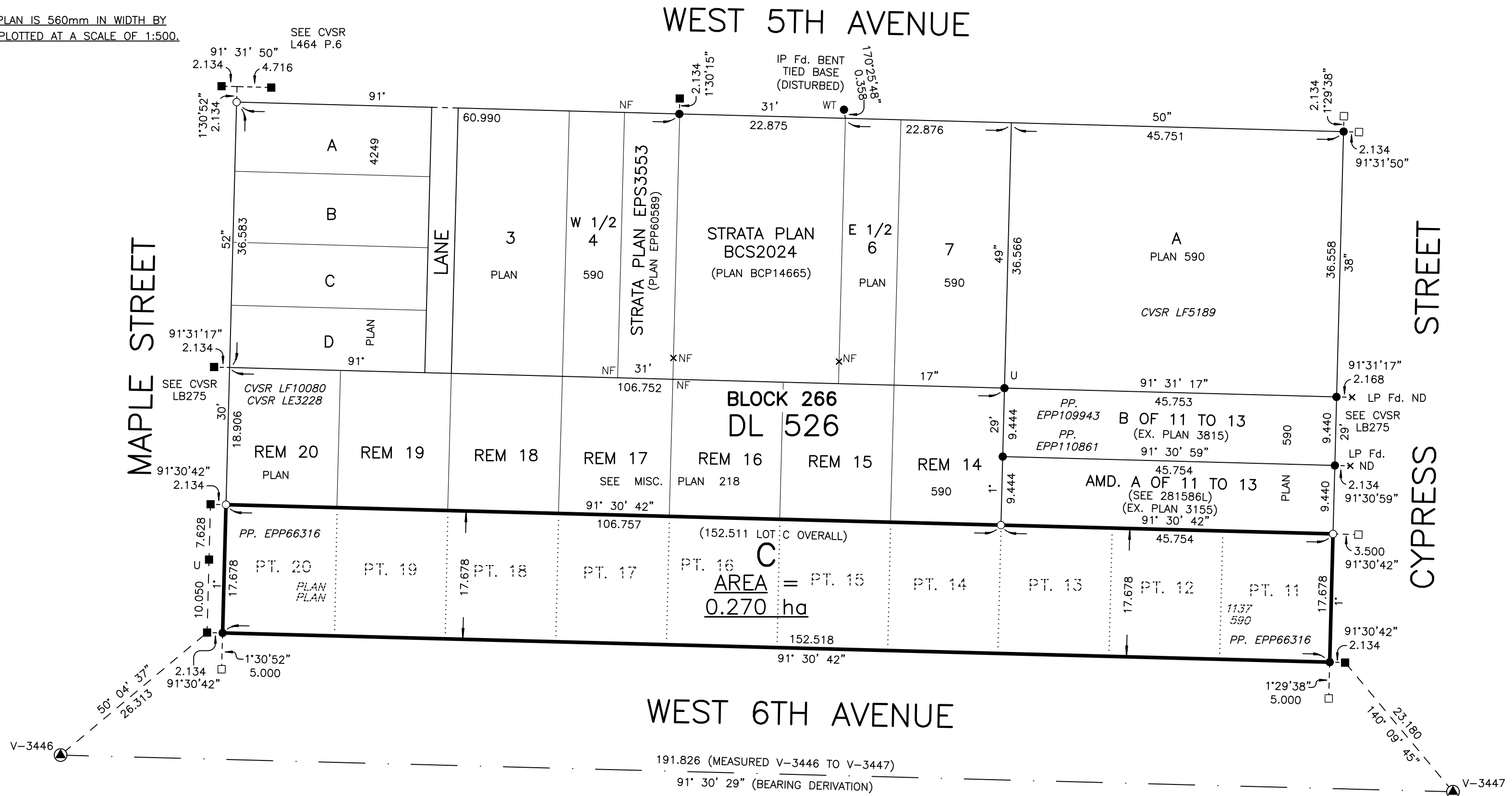
REFERENCE PLAN OF THOSE PARTS OF LOTS 11 TO 20 SHOWN RED ON PLAN 1137, BLOCK 266, DISTRICT LOT 526, GROUP 1, NEW WESTMINSTER DISTRICT, PLAN 590

PURSUANT TO SECTION 100(1)(b) OF THE LAND TITLE ACT
BCGS 92G.025



ALL DISTANCES ARE IN METRES AND DECIMALS THEREOF.

THE INTENDED PLOT SIZE OF THIS PLAN IS 560mm IN WIDTH BY 432mm IN HEIGHT (C SIZE) WHEN PLOTTED AT A SCALE OF 1:500.



LEGEND

- ▲ INDICATES CONTROL MONUMENT FOUND
- INDICATES LEAD PLUG FOUND
- INDICATES LEAD PLUG PLACED
- INDICATES STANDARD IRON POST FOUND
- INDICATES STANDARD IRON POST PLACED
- × INDICATES UNMONUMENTED POINT
- CVSR INDICATES CITY OF VANCOUVER SURVEY RECORDS
- EX. INDICATES EXPLANATORY
- U INDICATES UNKNOWN ORIGIN
- PT. INDICATES PART OF
- WT INDICATES WITNESS
- PP. INDICATES POSTING PLAN
- AMD. INDICATES AMENDED
- Fd. ND INDICATES FOUND, NOW DESTROYED
- LP INDICATES LEAD PLUG
- MISC. INDICATES MISCELLANEOUS

UTM ZONE 10 NAD83(CSRS) 4.0.0.BC.1.MVRD COORDINATES			
GCM	NORTHING	EASTING	ABSOLUTE ACCURACY
V-3447	5,457,067.285	489,237.668	0.008
V-3446	5,457,072.332	489,045.973	0.008

NOTES:

- THIS PLAN LIES WITHIN INTEGRATED SURVEY AREA NO. 31, CITY OF VANCOUVER, NAD83 (CSRS) [4.0.0.BC.1.MVRD].
- GRID BEARINGS ARE DERIVED FROM OBSERVATIONS BETWEEN GEODETIC CONTROL MONUMENTS V-3447 AND V-3446 AND ARE REFERRED TO THE CENTRAL MERIDIAN OF UTM ZONE 10.
- THIS PLAN SHOWS HORIZONTAL GROUND-LEVEL DISTANCES, UNLESS OTHERWISE SPECIFIED. TO COMPUTE GRID DISTANCES, MULTIPLY GROUND-LEVEL DISTANCES BY THE AVERAGE COMBINED FACTOR OF 0.9995999. THE AVERAGE COMBINED FACTOR HAS BEEN DETERMINED BASED ON GEODETIC CONTROL MONUMENT V-3447.
- THE UTM COORDINATES AND ESTIMATED ABSOLUTE ACCURACY ACHIEVED ARE DERIVED FROM THE MASCOT-PUBLISHED COORDINATES AND STANDARD DEVIATIONS FOR GEODETIC CONTROL MONUMENTS V-3447 AND V-3446.
- THIS PLAN SHOWS ONE OR MORE WITNESS POSTS WHICH ARE NOT SET ON THE TRUE CORNER(S).
- WITNESS POSTS AND OFFSET POSTS ARE ON PROPERTY LINE OR PROPERTY LINE PRODUCTION UNLESS OTHERWISE NOTED.
- FOR CLARITY PURPOSES CERTAIN OFFSET LINES ARE NOT TO SCALE.
- LOT CREATED ON THIS PLAN IS A CONTINUATION OF AN EXISTING NUMBERING SERIES.

THIS PLAN LIES WITHIN THE METRO VANCOUVER REGIONAL DISTRICT

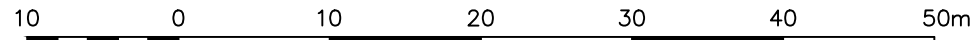
THE FIELD SURVEY REPRESENTED BY THIS PLAN WAS COMPLETED ON THE 11th DAY OF APRIL, 2024.
TAYLOR D. KAGEL, BCLS #1014

REFERENCE PLAN OF THAT PART OF LOT 11 SHOWN RED ON PLAN 1137, BLOCK 265, DISTRICT LOT 526, GROUP 1, NEW WESTMINSTER DISTRICT, PLAN 590

PLAN EPP127617

PURSUANT TO SECTION 100(1)(a) OF THE LAND TITLE ACT

BCGS 92G.025



ALL DISTANCES ARE IN METRES AND DECIMALS THEREOF.

THE INTENDED PLOT SIZE OF THIS PLAN IS 560mm IN WIDTH BY 432mm IN HEIGHT (C SIZE) WHEN PLOTTED AT A SCALE OF 1:500.

LEGEND

- ⊙ INDICATES CONTROL MONUMENT FOUND
- INDICATES LEAD PLUG FOUND
- INDICATES LEAD PLUG PLACED
- INDICATES STANDARD IRON POST FOUND
- INDICATES STANDARD IRON POST PLACED
- × INDICATES UNMONUMENTED POINT
- CVSR INDICATES CITY OF VANCOUVER SURVEY RECORDS
- PT. INDICATES PART OF
- PP. INDICATES POSTING PLAN
- REF. INDICATES REFERENCE PLAN
- WT INDICATES WITNESS
- BK INDICATES BLOCK
- NF INDICATES NOTHING FOUND
- SP INDICATES STRATA PLAN

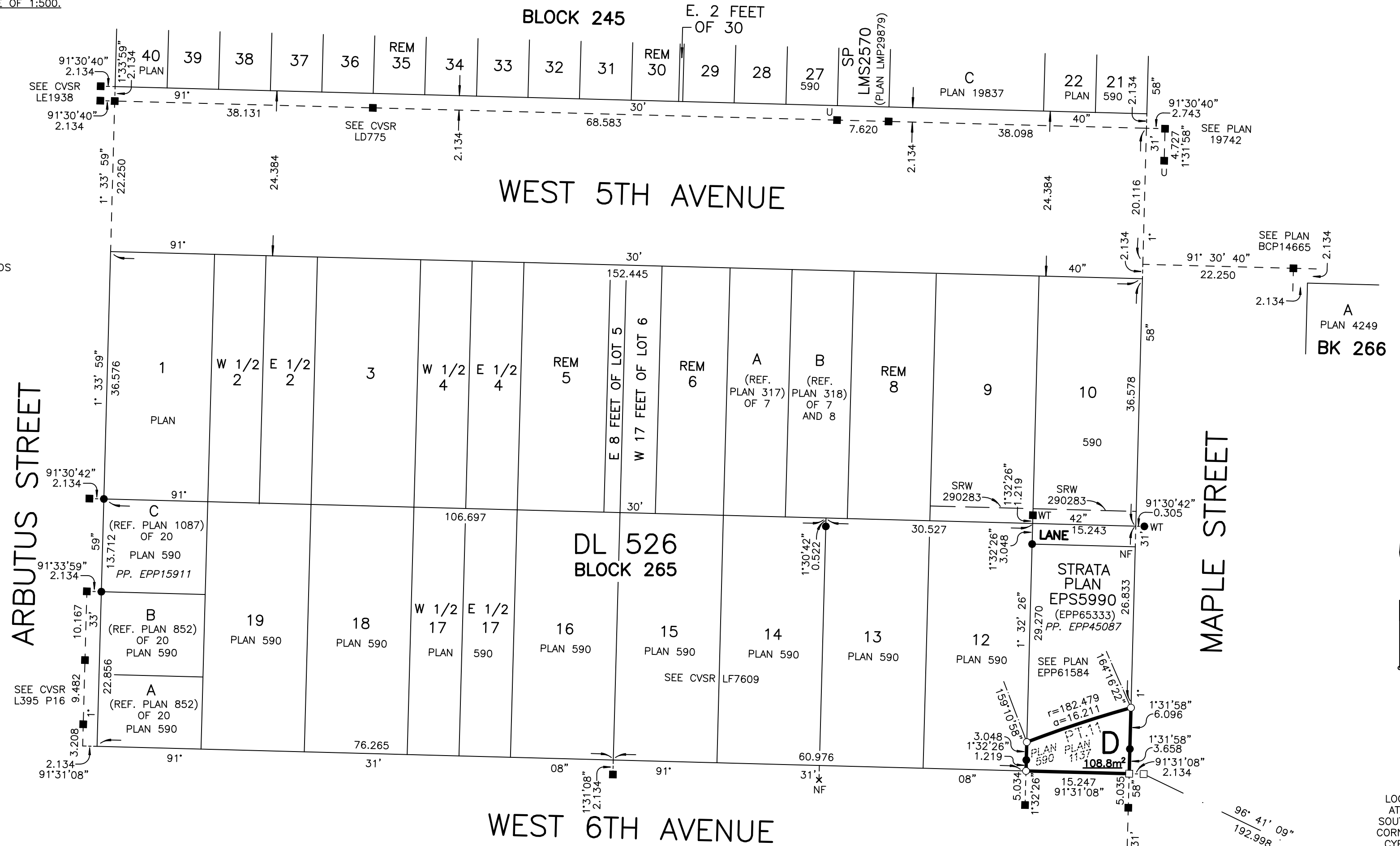
- NOTES:
- THIS PLAN SHOWS ONE OR MORE WITNESS POSTS WHICH ARE NOT SET ON THE TRUE CORNER(S).
 - FOR CLARITY PURPOSES CERTAIN OFFSET LINES ARE NOT TO SCALE.
 - WITNESS POSTS AND OFFSET POSTS ARE ON PROPERTY LINE OR PROPERTY LINE PRODUCTION UNLESS OTHERWISE NOTED.
 - LOT CREATED ON THIS PLAN IS A CONTINUATION OF AN EXISTING NUMBERING SERIES.

THIS PLAN LIES WITHIN INTEGRATED SURVEY AREA No.31, CITY OF VANCOUVER, NAD83(CSRS) 4.0.0.BC.1.MVRD.

GRID BEARINGS ARE DERIVED FROM OBSERVATIONS BETWEEN GEODETIC CONTROL MONUMENTS V-3446 AND V-3447 AND ARE REFERRED TO THE CENTRAL MERIDIAN OF UTM ZONE 10.

THE UTM COORDINATES AND ESTIMATED ABSOLUTE ACCURACY ACHIEVED ARE DERIVED FROM THE MASCOT PUBLISHED COORDINATES AND STANDARD DEVIATIONS FOR GEODETIC CONTROL MONUMENTS V-3446 AND V-3447.

THIS PLAN SHOWS HORIZONTAL GROUND-LEVEL DISTANCES, UNLESS OTHERWISE SPECIFIED. TO COMPUTE GRID DISTANCES, MULTIPLY GROUND-LEVEL DISTANCES BY THE AVERAGE COMBINED FACTOR OF 0.9995992. THE AVERAGE COMBINED FACTOR HAS BEEN DETERMINED BASED ON GEODETIC CONTROL MONUMENT V-3446.



UTM ZONE 10 NAD83(CSRS) 4.0.0.BC.1.MVRD COORDINATES			
GCM	NORTHING	EASTING	ABSOLUTE ACCURACY
V-3446	5,457,072.332	489,045.973	0.008
V-3447	5,457,067.285	489,237.668	0.008

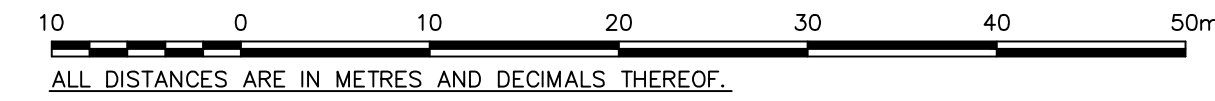
THE FIELD SURVEY REPRESENTED BY THIS PLAN WAS COMPLETED ON THE 11th DAY OF APRIL, 2024.

THIS PLAN LIES WITHIN THE METRO VANCOUVER REGIONAL DISTRICT

TAYLOR D. KAGEL, BCLS #1014

REFERENCE PLAN OF:
 THOSE PARTS OF LOTS 5 TO 8 INCLUSIVE, LOT 17, AND LOT 18, SHOWN RED ON PLAN 1137; AND
 LOT 16, EXCEPT PART IN EXPLANATORY PLAN 2750;
 ALL OF BLOCK 285, DISTRICT LOT 526, GROUP 1, NEW WESTMINSTER DISTRICT, PLAN 590

PURSUANT TO SECTION 100(1)(b) OF THE LAND TITLE ACT
 BCGS 92G.025

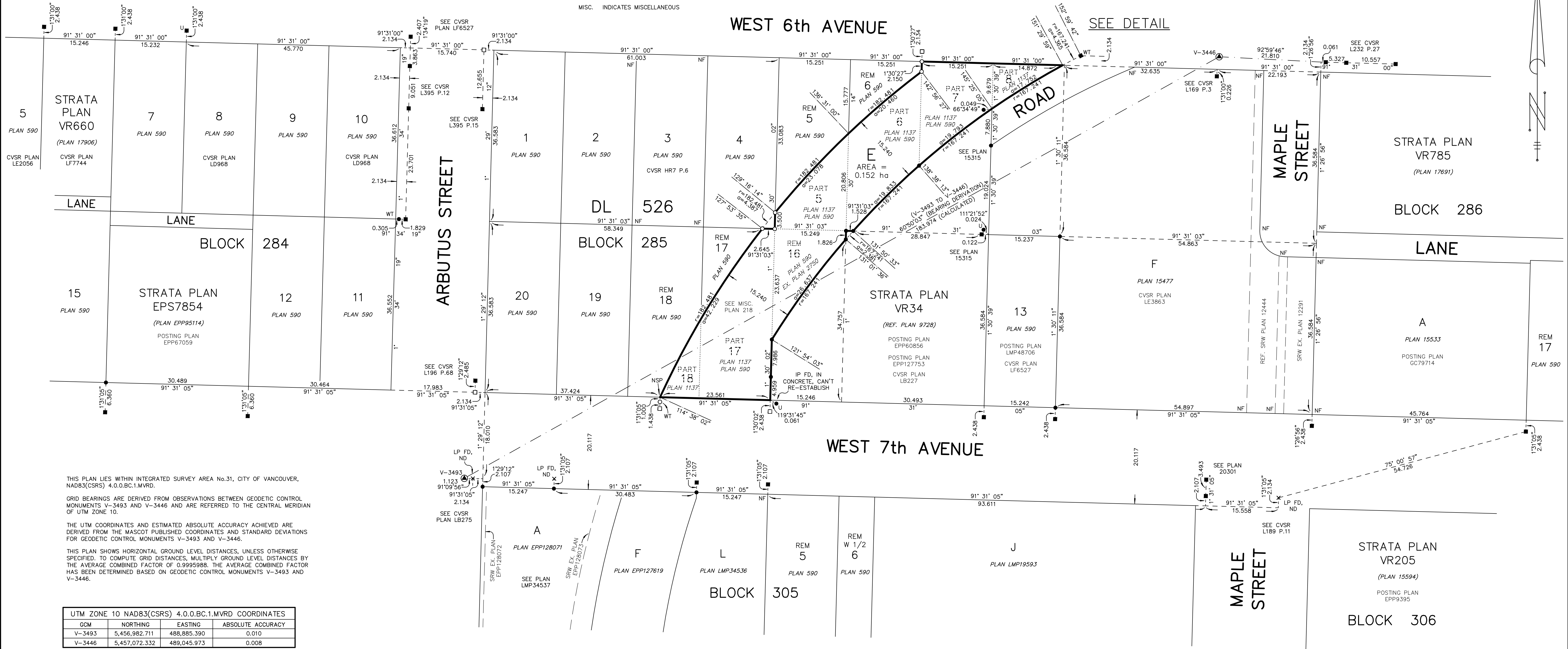
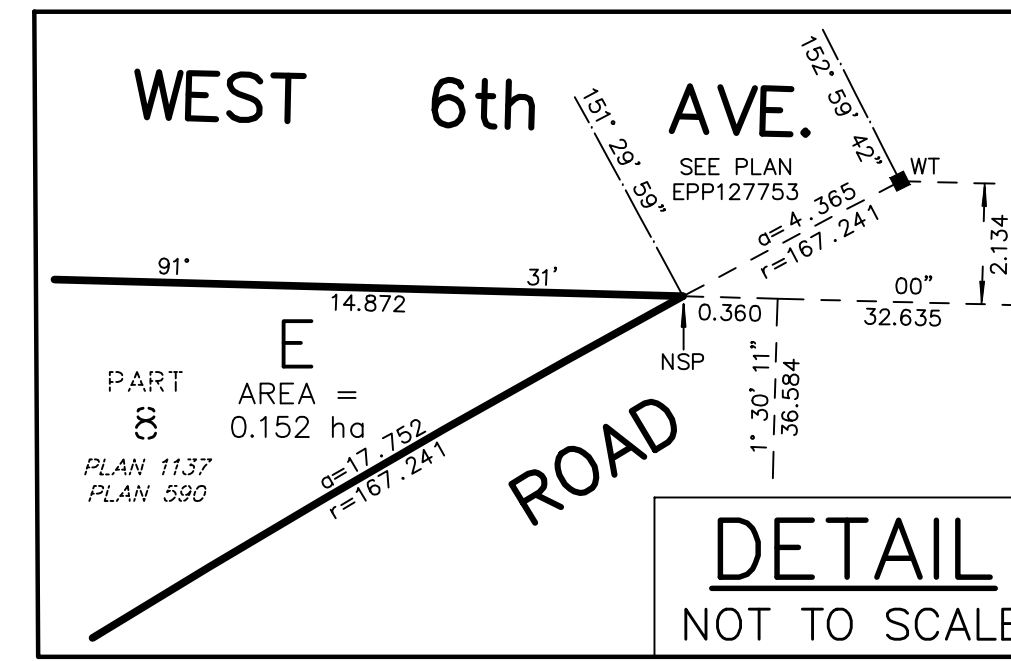


THE INTENDED PLOT SIZE OF THIS PLAN IS 864mm IN WIDTH BY
 560mm IN HEIGHT (D SIZE) WHEN PLOTTED AT A SCALE OF 1:400.

NOTES:
 • THIS PLAN SHOWS ONE OR MORE WITNESS POSTS WHICH ARE NOT SET ON THE TRUE CORNER(S).
 • FOR CLARITY PURPOSES CERTAIN OFFSET LINES ARE NOT TO SCALE.
 • WITNESS POSTS AND OFFSET POSTS ARE ON PROPERTY LINE OR PROPERTY LINE PRODUCTION UNLESS OTHERWISE NOTED.
 • LOTS CREATED ON THIS PLAN ARE A CONTINUATION OF AN EXISTING NUMBERING SERIES.

LEGEND

- INDICATES CONTROL MONUMENT FOUND
- INDICATES LEAD PLUG FOUND
- INDICATES LEAD PLUG PLACED
- INDICATES STANDARD IRON POST FOUND
- INDICATES STANDARD IRON POST PLACED
- U INDICATES UNKNOWN ORIGIN
- WT INDICATES WITNESS POST
- EX. INDICATES EXPLANATORY
- X INDICATES UNMONUMENTED POINT
- REF. INDICATES REFERENCE
- CVSR INDICATES CITY OF VANCOUVER SURVEY RECORDS
- NF INDICATES NOTHING FOUND
- FD, ND INDICATES FOUND, NOW DESTROYED
- LP INDICATES LEAD PLUG
- NSP INDICATES NOT SUITABLE FOR POSTING
- MISC. INDICATES MISCELLANEOUS



THIS PLAN LIES WITHIN INTERSECTION SURVEY AREA No.31, CITY OF VANCOUVER, NAD83(CSRS) 4.0.0.BC.1.MVRD.
 GRID BEARINGS ARE DERIVED FROM OBSERVATIONS BETWEEN GEODETIC CONTROL MONUMENTS V-3493 AND V-3446 AND ARE REFERRED TO THE CENTRAL MERIDIAN OF UTM ZONE 10.
 THE UTM COORDINATES AND ESTIMATED ABSOLUTE ACCURACY ACHIEVED ARE DERIVED FROM THE MASCOOT PUBLISHED COORDINATES AND STANDARD DEVIATIONS FOR GEODETIC CONTROL MONUMENTS V-3493 AND V-3446.
 THIS PLAN SHOWS HORIZONTAL GROUND LEVEL DISTANCES, UNLESS OTHERWISE SPECIFIED. TO COMPUTE GRID DISTANCES, MULTIPLY GROUND LEVEL DISTANCES BY THE AVERAGE COMBINED FACTOR OF 0.9995988. THE AVERAGE COMBINED FACTOR HAS BEEN DETERMINED BASED ON GEODETIC CONTROL MONUMENTS V-3493 AND V-3446.

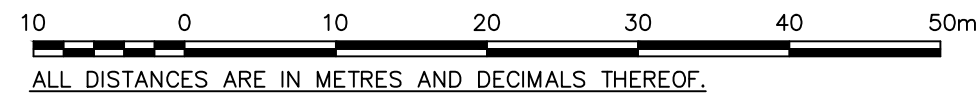
UTM ZONE 10 NAD83(CSRS) 4.0.0.BC.1.MVRD COORDINATES			
GCM	NORTHING	EASTING	ABSOLUTE ACCURACY
V-3493	5,456,982.711	488,885.390	0.010
V-3446	5,457,072.332	489,045.973	0.008

THIS PLAN LIES WITHIN THE METRO VANCOUVER REGIONAL DISTRICT

THE FIELD SURVEY REPRESENTED BY THIS PLAN WAS COMPLETED ON THE 11TH DAY OF APRIL, 2024.
 CARL A. BJARNASON, BCLS #1009

REFERENCE PLAN OF THOSE PARTS OF LOTS
2, 3, 18 AND 19 SHOWN RED ON PLAN 1137,
BLOCK 305, DISTRICT LOT 526, GROUP 1,
NEW WESTMINSTER DISTRICT, PLAN 590

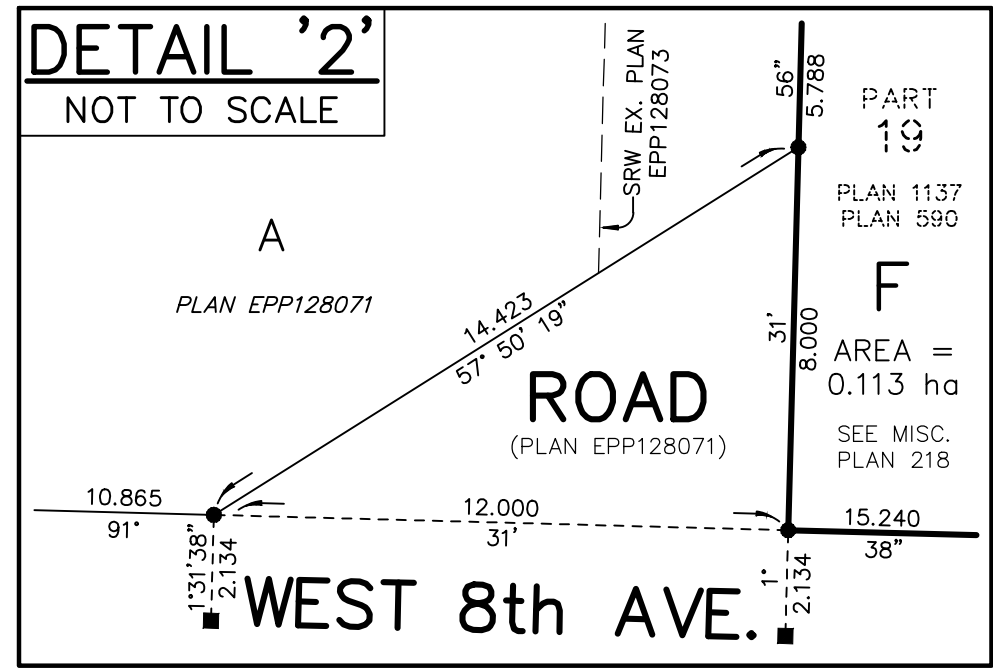
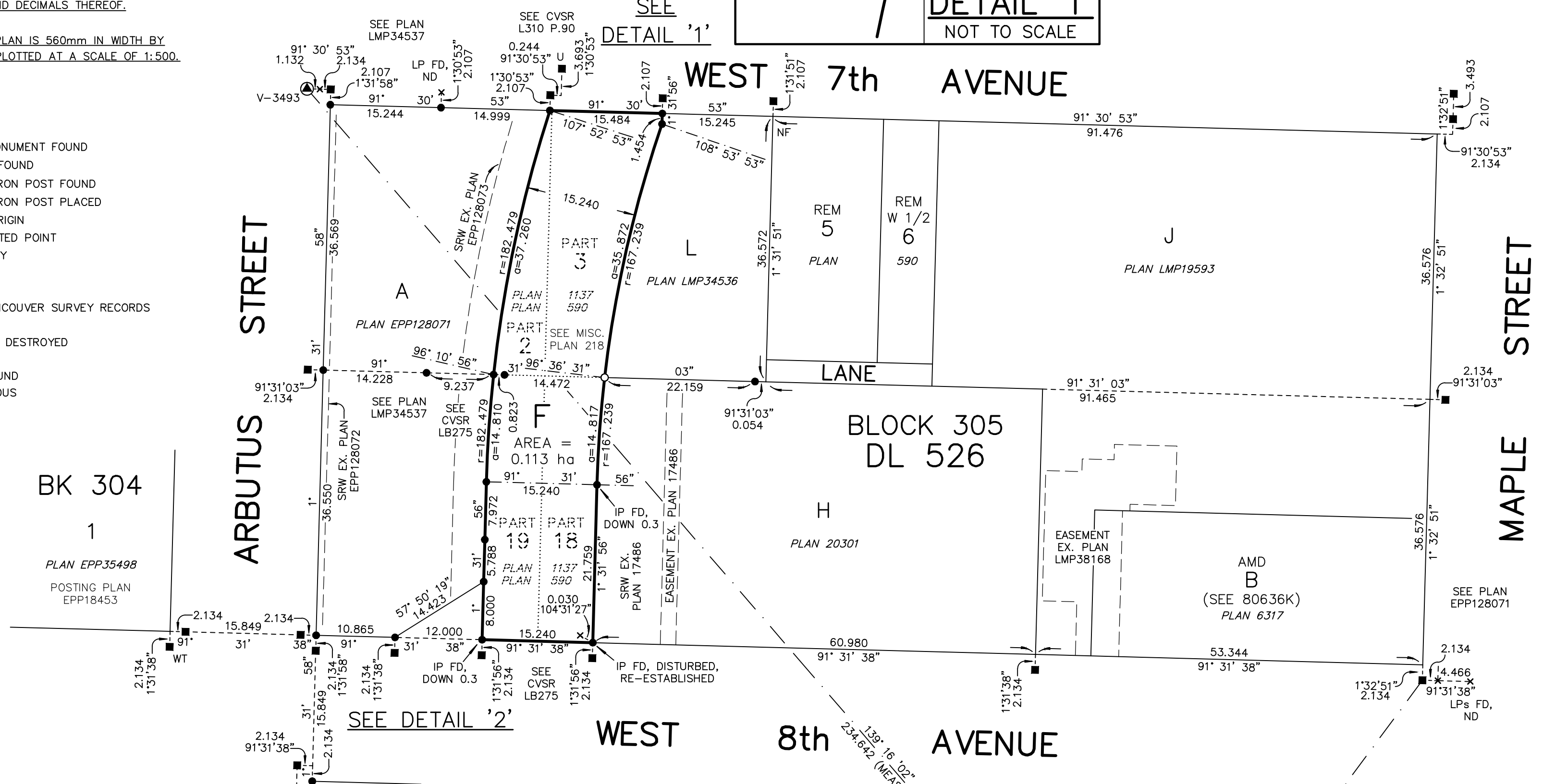
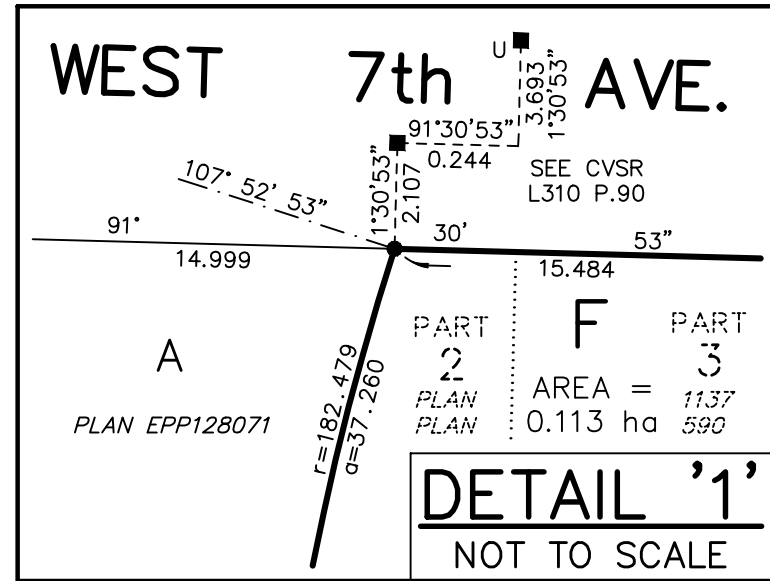
PURSUANT TO SECTION 100(1)(b) OF THE LAND TITLE ACT
BCGS 92G.025



THE INTENDED PLOT SIZE OF THIS PLAN IS 560mm IN WIDTH BY
432mm IN HEIGHT (C SIZE) WHEN PLOTTED AT A SCALE OF 1:500.

LEGEND

- ▲ INDICATES CONTROL MONUMENT FOUND
- INDICATES LEAD PLUG FOUND
- INDICATES STANDARD IRON POST FOUND
- INDICATES STANDARD IRON POST PLACED
- U INDICATES UNKNOWN ORIGIN
- x INDICATES UNMONUMENTED POINT
- EX. INDICATES EXPLANATORY
- BK INDICATES BLOCK
- AMD INDICATES AMENDED
- CVSR INDICATES CITY OF VANCOUVER SURVEY RECORDS
- WT INDICATES WITNESS
- FD, ND INDICATES FOUND, NOW DESTROYED
- LP INDICATES LEAD PLUG
- NF INDICATES NOTHING FOUND
- MISC. INDICATES MISCELLANEOUS



THIS PLAN LIES WITHIN INTEGRATED SURVEY AREA No.31, CITY OF VANCOUVER, NAD83(CSRs) 4.0.0.BC.1.MVRD.

GRID BEARINGS ARE DERIVED FROM OBSERVATIONS BETWEEN GEODETIC CONTROL MONUMENTS V-3493 AND V-1010 AND ARE REFERRED TO THE CENTRAL MERIDIAN OF UTM ZONE 10.

THE UTM COORDINATES AND ESTIMATED ABSOLUTE ACCURACY ACHIEVED ARE DERIVED FROM THE MASCOT PUBLISHED COORDINATES AND STANDARD DEVIATIONS FOR GEODETIC CONTROL MONUMENTS V-3493 AND V-1010.

THIS PLAN SHOWS HORIZONTAL GROUND LEVEL DISTANCES, UNLESS OTHERWISE SPECIFIED. TO COMPUTE GRID DISTANCES, MULTIPLY GROUND LEVEL DISTANCES BY THE AVERAGE COMBINED FACTOR OF 0.9995984. THE AVERAGE COMBINED FACTOR HAS BEEN DETERMINED BASED ON GEODETIC CONTROL MONUMENT V-3493.

UTM ZONE 10 NAD83(CSRs) 4.0.0.BC.1.MVRD COORDINATES			
GCM	NORTHING	EASTING	ABSOLUTE ACCURACY
V-3493	5,456,982.711	488,885.390	0.010
V-1010	5,456,804.993	489,038.429	0.008

- NOTES:
- THIS PLAN SHOWS ONE OR MORE WITNESS POSTS WHICH ARE NOT SET ON THE TRUE CORNER(S).
 - FOR CLARITY PURPOSES CERTAIN OFFSET LINES ARE NOT TO SCALE.
 - WITNESS POSTS AND OFFSET POSTS ARE ON PROPERTY LINE OR PROPERTY LINE PRODUCTION UNLESS OTHERWISE NOTED.
 - LOTS CREATED ON THIS PLAN ARE A CONTINUATION OF AN EXISTING NUMBERING SERIES.

THE FIELD SURVEY REPRESENTED BY THIS PLAN WAS COMPLETED ON THE 11th DAY OF APRIL, 2024.
CARL A. BJARNASON, BCLS #1099

THIS PLAN LIES WITHIN THE METRO VANCOUVER REGIONAL DISTRICT