

**SUPPORTIVE HOUSING  
IN VANCOUVER**



Canada



BC HOUSING

# Renfrew Street at East 14th Avenue

2930 Renfrew Street





# New warm, safe homes with supports on Renfrew Street at East 14th Avenue

Vancouver is in a housing crisis and more than 2,000 people across the city are experiencing homelessness. Creating warm, safe homes with supports continues to be a top priority for BC Housing and the City of Vancouver.

BC Housing, Lu'ma Native Housing Society and the City of Vancouver are proposing to build a new 12-storey building with 76 supportive homes at 2930 Renfrew Street. This proposal replaces an earlier version to build a six-storey building with 50 supportive homes that was shared with the community in June 2021.





# **New warm, safe homes with supports on Renfrew Street at East 14th Avenue**

The new homes would address the urgent need for supportive housing and prevent people from experiencing homelessness.

- All units would be studio apartments with a private bathroom and kitchen.
- At least 5% of the homes would be fully accessible.
- The building would include space for Indigenous cultural practices as well as amenities like shared laundry, commercial kitchen, dining area and program space.



**View to northeast**

## What is supportive housing?

Supportive housing provides permanent, affordable rental homes with wrap-around support services for residents.



## How supportive housing is managed

Supportive housing programs are funded by the Province and managed by non-profit housing operators. They bring professional building management experience and expertise supporting the unique needs of each resident.

If approved, the new homes at 2930 Renfrew Street would be managed by Lu'ma Native Housing Society.

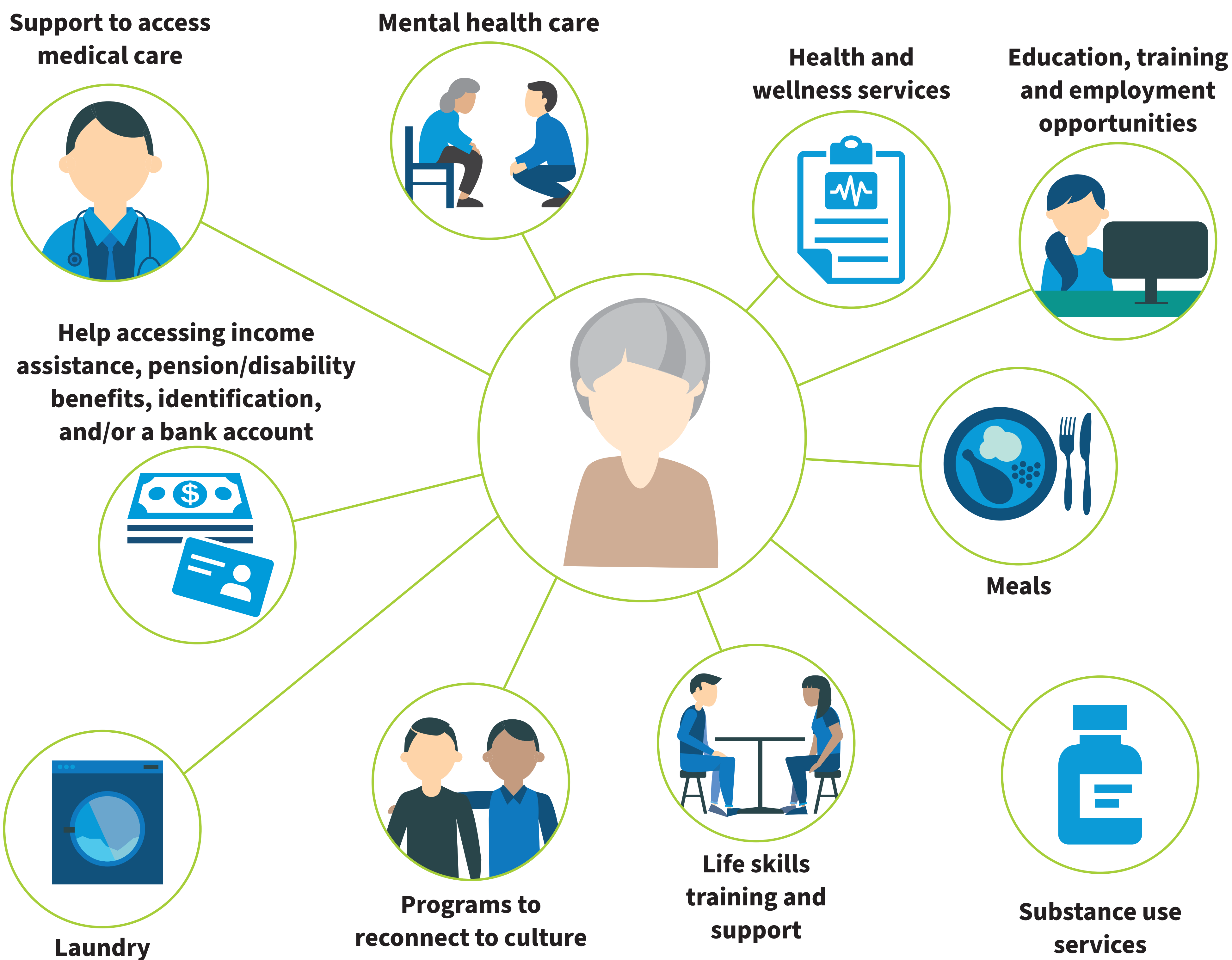
All residents in supportive housing have made a choice to live there, pay rent, and are able to access the supports provided by non-profit housing operators, health care professionals and other community-based programs.

In addition to caring for the residents, the non-profit operator is also responsible for taking care of the building and the property.



# A vital connection to programs and services

Trained support workers partner with each resident to develop a customized plan to meet their personal and housing goals. Some supports are offered inside the building while others are offered in the local community.





# Project partners



Lu'ma Native Housing Society