

Vancouver Housing Development Office's Non-Market Housing Development

Delivers the City's Housing Vancouver strategy by:



265 W. 1st (52 units) - Hummingbird Place
PHS Community Services



Dunbar Apartments
Coast Mental Health

- Making city sites available for non-market housing development
- Conducting predevelopment activities
- Securing partnerships with senior government, funders and operators
- Leading projects through regulatory submissions (ie. RZ, DP, BP)
- Providing development management support for our partners and funders



2928-2930 Renfrew Street Supportive Housing

Public Hearing

February 29, 2024

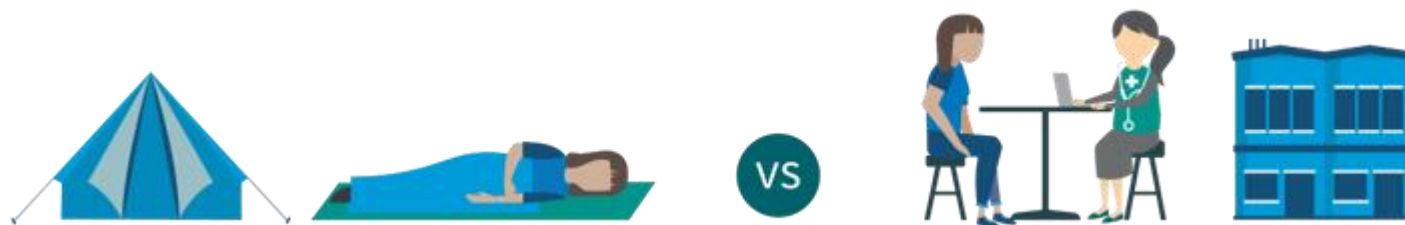
Partners

BC Housing, the City of Vancouver and CMHC are taking collective action to address the urgent need for supportive housing in Vancouver.



Creating warm, safe homes with supports

Vancouver is in a housing crisis and more than 2,000 people across the city are experiencing homelessness. Creating warm, safe homes with supports continues to be a top priority for BC Housing and the City of Vancouver.



2928-2930 Renfrew Street

- BC Housing, Lu'ma Native Housing Society and the City of Vancouver are proposing to build a new **12-storey building with 76 supportive homes** at 2928-2930 Renfrew Street.
- All units would be studio apartments with a **private bathroom and kitchen**.
- At least 5% of the homes would be fully **accessible**, with all homes designed to be universally adaptable to residents of all abilities.
- The building would include space for Indigenous cultural practices as well as amenities like shared laundry, commercial kitchen, dining area and program space.

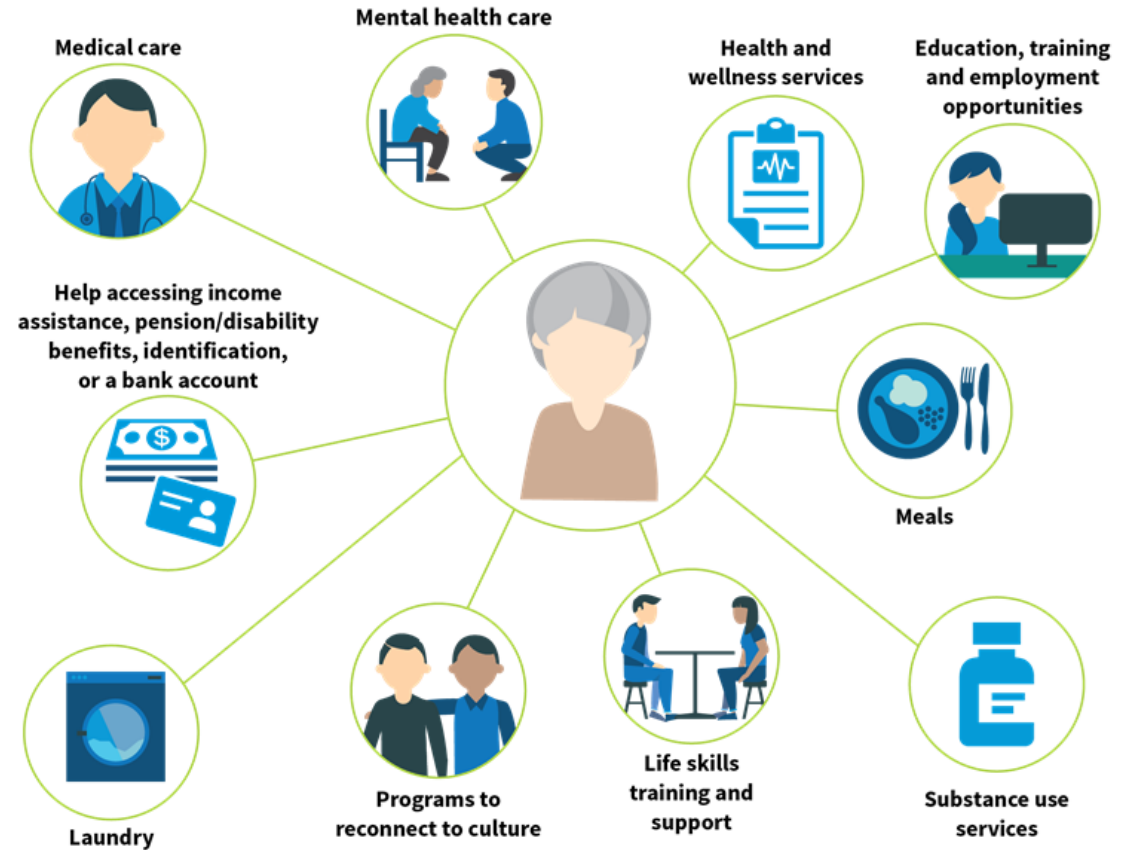


Supportive Housing: A vital connection to programs and services

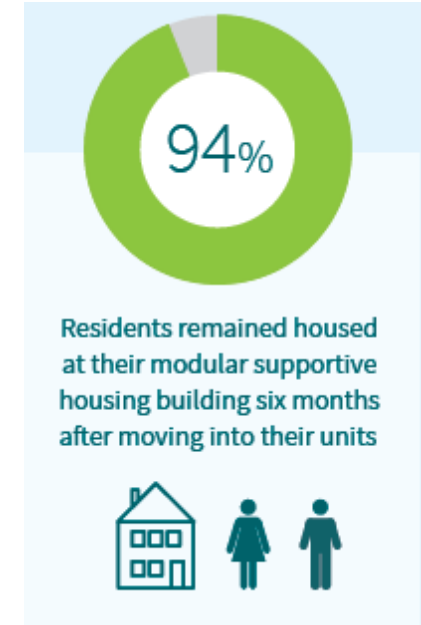
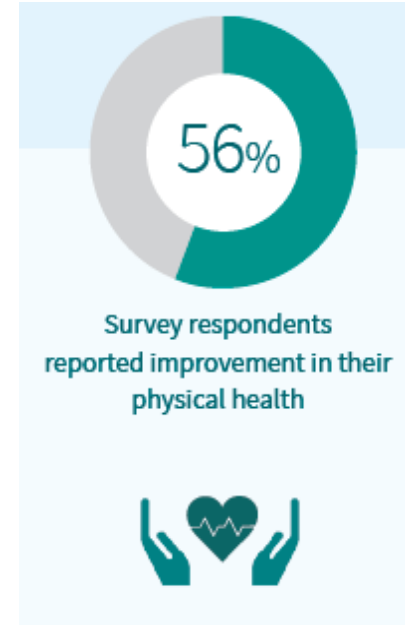
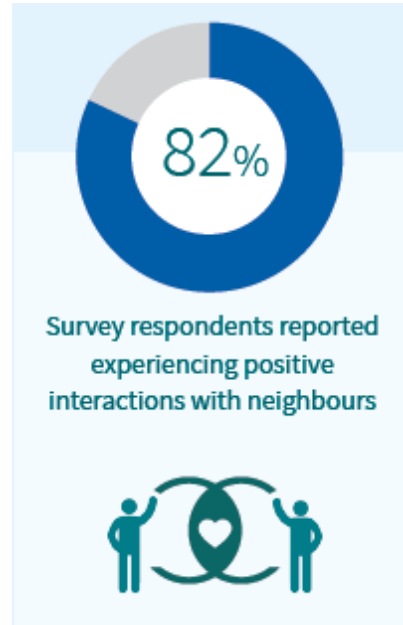
Supportive housing programs are managed by non-profit housing operators who bring:

- Professional building management experience.
- Expertise providing customized supports tailored to meet the unique needs of each resident.

All residents in supportive housing have made a choice to live there, pay rent and are able to access the supports provided by non-profit housing operators, health care professionals and other community-based programs.



Supportive Housing Outcomes: Improving people's health and well-being



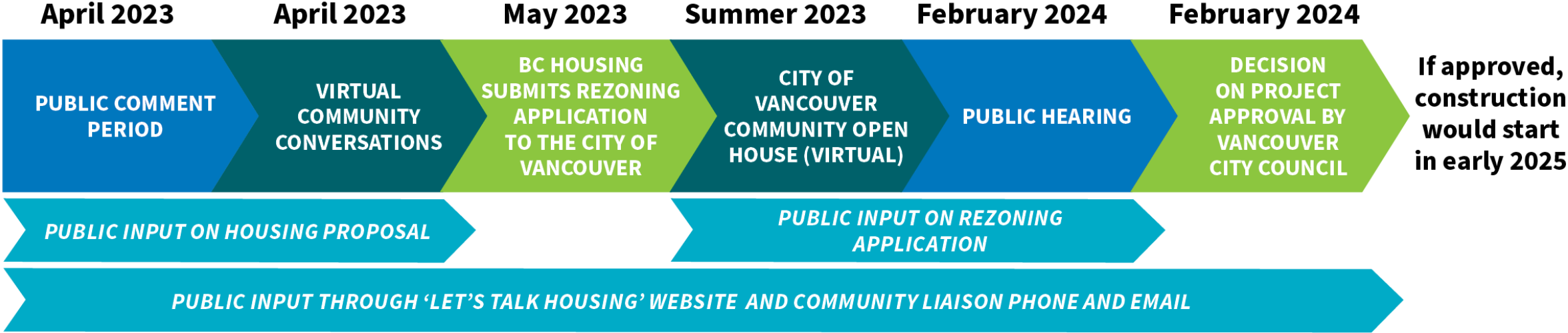
Lu'ma Native Housing Society

- Lu'ma Native Housing Society owns and manages more than 550 affordable homes in Vancouver.
- Lu'ma offers a wide range of programs, services and other initiatives aimed at alleviating poverty, improving the overall health of the urban Indigenous community and responding to the evolving needs of Indigenous Peoples.



Lu'ma Native Housing Society

Community Input and Engagement Process



Dates in the timeline are approximate and subject to change.



Thank you