

A.1

MOTION

1. **Approval of Form of Development – 319-359 West 49th Avenue**

THAT the form of development for this portion of the site known as 319-359 West 49th Avenue be approved generally as illustrated in the Development Application Number DP-2020-00703, prepared by Killarney Development Ltd and Winston Chong Architects Inc, and submitted electronically on February 13, 2023, provided that the Director of Planning may impose conditions and approve design changes which would not adversely affect either the development character of the site or adjacent properties.

* * * * *

Additional Background Information:

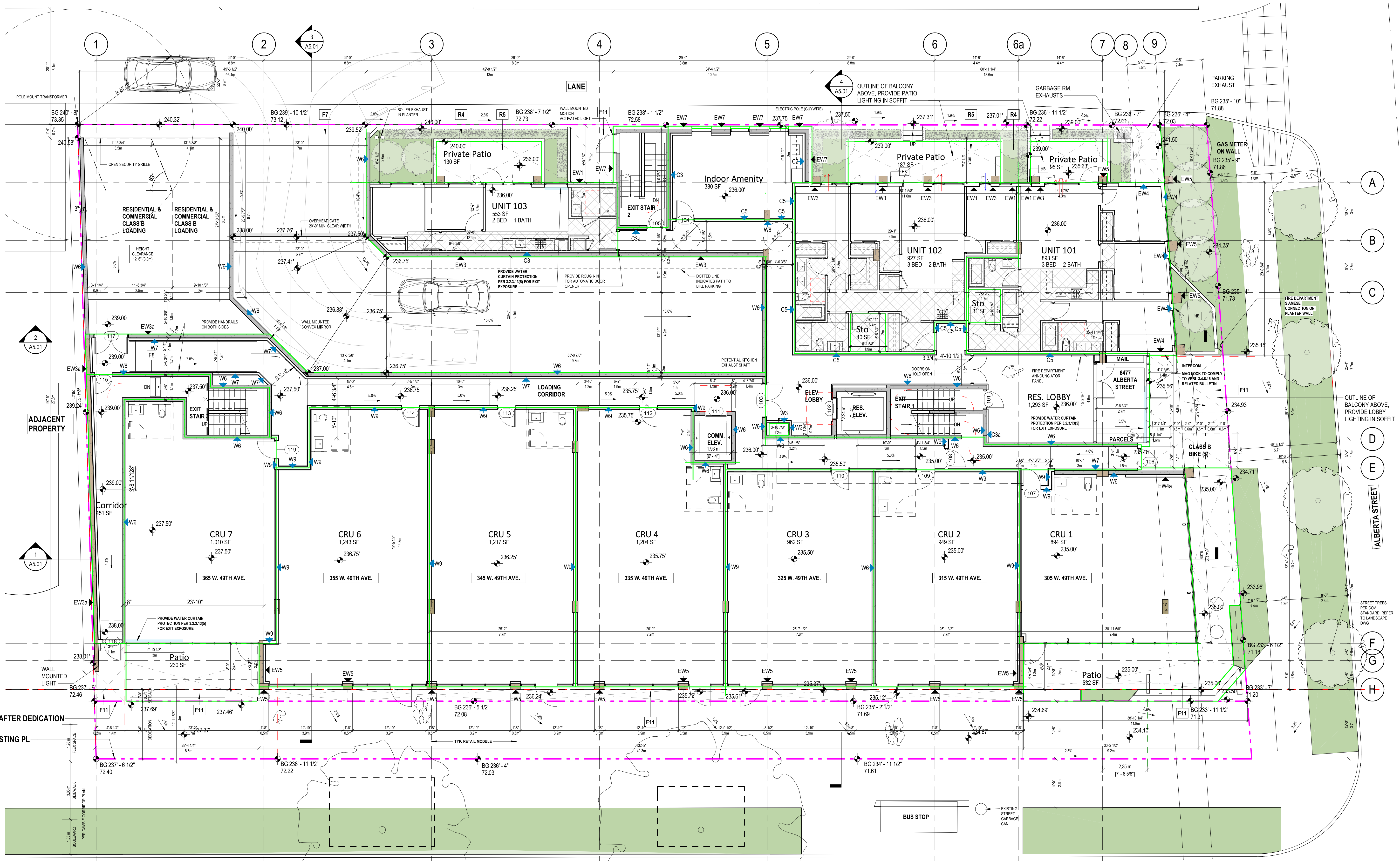
<https://www.shapeyourcity.ca/319-359-w-49-ave>



ALL DRAWINGS AND RELATED DOCUMENTS ARE THE PROPERTY OF WINSTON CHONG ARCHITECT INC. AND MAY NOT BE REPRODUCED IN WHOLE OR IN PART WITHOUT THE ARCHITECT'S PERMISSION. DO NOT SCALE THIS DRAWING. THE CONTRACTOR MUST VERIFY AND BE RESPONSIBLE FOR ALL JOB DIMENSIONS, DRAWINGS, DETAILS, AND SPECIFICATIONS AND REPORT ANY DISCREPANCIES TO THE ARCHITECT BEFORE PROCEEDING WITH THE WORK. ALL WORK, LABOUR, MATERIAL, AND PRODUCTS MUST COMPLY WITH THE REQUIREMENTS OF THE BUILDING CODE AND RELEVANT BYLAWS AND RELATED DOCUMENTS.

FIRE SEPARATION LINE STYLE LEGEND

- 0 HOUR (FIRESTOP/ SMOKE SEAL)
- 0.75 HOUR
- 1 HOUR
- 1.5 HOUR
- 2 HOUR
- 2 HOUR (IN CONCRETE OR MASONRY CONSTRUCTION)
- 3 HOUR



UNIT BREAKDOWN

2 BED	1
3 BED	2
TOTAL UNIT ON L1	3

DATE	REV	DESCRIPTION
2023/03/14	7	ISSUED FOR DP RESUBMISSION (OUTSTANDING #5)
2023/01/30	6	ISSUED FOR DP RESUBMISSION (OUTSTANDING #4)
2022/10/03	5	ISSUED FOR DP RESUBMISSION (OUTSTANDING #3)
2021/11/30	4	ISSUED FOR DP RESUBMISSION (PRIOR-TO RESPONSE R3)
2021/05/17	3	ISSUED FOR DP RESUBMISSION (PRIOR-TO RESPONSE R2)
2021/02/19	2	ISSUED FOR DP RESUBMISSION (PRIOR-TO RESPONSE)
2020/09/11	1	ISSUED FOR DP APPLICATION

MIXED-USE DEVELOPMENT
319-359 WEST 49TH AVENUE,
VANCOUVER BC
DP-2020-00703
CD1-(832)

PROJECT NO. 2020-035

A1.02

LEVEL 1 PLAN



ALL DRAWINGS AND RELATED DOCUMENTS ARE THE PROPERTY OF WINSTON CHONG ARCHITECT INC. AND MAY NOT BE REPRODUCED IN WHOLE OR IN PART WITHOUT THE ARCHITECT'S PERMISSION. DO NOT SCALE THIS DRAWING. THE CONTRACTOR MUST VERIFY AND BE RESPONSIBLE FOR ALL JOB DIMENSIONS, DRAWINGS, DETAILS, AND SPECIFICATIONS AND REPORT ANY DISCREPANCIES TO THE ARCHITECT BEFORE PROCEEDING WITH THE WORK. ALL WORK, LABOUR, MATERIAL, AND PRODUCTS MUST COMPLY WITH THE REQUIREMENTS OF THE BUILDING CODE AND RELEVANT BYLAWS AND RELATED DOCUMENTS.

MATERIAL LEGEND

1	VINYL WINDOWS C/W INSULATED GLASS UNITS (IGU)
1a	VINYL WINDOWS C/W INSULATED GLASS UNITS (IGU) C/W SWING DOORS IN WHITE FRAMES
2	ALUMINUM CURTAIN WALL C/W IGU / SWING DOORS IN CLEAR ANODIZED FRAMES
3	BALCONY GUARDRAIL TYPE A - MIN 42" H ALUMINUM STANCHIONS W/ TINTED GLASS
4	BALCONY GUARDRAIL TYPE B - MIN 42" H ALUMINUM STANCHIONS WITH CLEAR GLASS
5	BALCONY GUARDRAIL TYPE C - MIN 42" H PREFINISHED ALUMINUM SLATS, CHARCOAL GREY
6	CEMENTITIOUS CLADDING IN VERTICAL PLANKS "MILLED ARTISAN, "SHIPLAP" IN WHITE
6a	CEMENTITIOUS FASCIA PANEL "REVEAL PANEL" IN BLACK / CHARCOAL GREY
6b	CEMENTITIOUS CLADDING IN VERTICAL PLANKS "MILLED ARTISAN, "SHIPLAP" IN CHARCOAL GREY
6c	CEMENTITIOUS CLADDING IN VERTICAL PLANKS "MILLED ARTISAN, "SHIPLAP" IN MED GREY
7	EXTRUDED ALUMINUM VERTICAL CLADDING "LONGBOARD" IN NATURAL WOOD TONE COLOR
8	ALUMINUM SSG CURTAIN WALL C/W SPANDREL GLASS / VERTICAL LOUVERS IN CLEAR ANODIZED
9	ARCHITECTURAL CONCRETE, CAST IN PLACE
9a	VERTICAL CEMENTITIOUS SIDING ON CMU WALL
10	FIR GLULAM WOOD COLUMN
11	FABRIC AWNING C/W ALUMINUM SUPPORT AND LOUVRE BAND ABOVE- CHARCOAL GREY
12	PAINTED STEEL CANOPY IN CHARCOAL GREY C/W "LONGBOARD" ALUM SLATS SOFFIT
13	ALUMINUM FRAME DOOR C/W IGU - CLEAR ANODIZED
14	CANOPY WITH NATURAL CEDAR SOFFIT
15	WOOD TRELLIS
16	STEEL PIPE FOR SIGNAGE - CHARCOAL GREY
17	ROLL UP SECURITY GRILLE

DATE	REV	DESCRIPTION
2023/03/14	7	ISSUED FOR DP RESUBMISSION (OUTSTANDING #5)
2023/01/30	6	ISSUED FOR DP RESUBMISSION (OUTSTANDING #4)
2022/10/03	5	ISSUED FOR DP RESUBMISSION (OUTSTANDING #3)
2021/11/30	4	ISSUED FOR DP RESUBMISSION (PRIOR-TO RESPONSE R3)
2021/05/17	3	ISSUED FOR DP RESUBMISSION (PRIOR-TO RESPONSE R2)
2021/02/19	2	ISSUED FOR DP RESUBMISSION (PRIOR-TO RESPONSE)
2020/09/11	1	ISSUED FOR DP APPLICATION

MIXED-USE DEVELOPMENT
319-359 WEST 49TH AVENUE,
VANCOUVER BC

DP-2020-00703
CD1-(832)

PROJECT NO. 2020-035

A3.01

NORTH ELEVATION



NOTE: ALL BUILDING CLADDING MATERIAL TO BE NON-COMBUSTIBLE

1 North Elevation
A3.01 3/32" = 1'-0"



2 North Elevation Rendered
A3.01 3/32" = 1'-0"



ALL DRAWINGS AND RELATED DOCUMENTS ARE THE PROPERTY OF WINSTON CHONG ARCHITECT INC. AND MAY NOT BE REPRODUCED IN WHOLE OR IN PART WITHOUT THE ARCHITECT'S PERMISSION. DO NOT SCALE THIS DRAWING. THE CONTRACTOR MUST VERIFY AND BE RESPONSIBLE FOR ALL JOB DIMENSIONS, DRAWINGS, DETAILS, AND SPECIFICATIONS AND REPORT ANY DISCREPANCIES TO THE ARCHITECT BEFORE PROCEEDING WITH THE WORK. ALL WORK, LABOUR, MATERIAL, AND PRODUCTS MUST COMPLY WITH THE REQUIREMENTS OF THE BUILDING CODE AND RELEVANT BYLAWS AND RELATED DOCUMENTS.

MATERIAL LEGEND

- 1 VINYL WINDOWS C/W INSULATED GLASS UNITS (IGU)
- 1a OVS/SWING DOORS IN BLK/CHARCOAL GREY FRAMES
- 2 VINYL WINDOWS C/W INSULATED GLASS UNITS (IGU)
- 2a OVS/SWING DOORS IN WHITE FRAMES
- 3 ALUMINUM CURTAIN WALL C/W IGU / SWING DOORS IN CLEAR ANODIZED FRAMES
- 4 BALCONY GUARDRAIL TYPE A - MIN 42" H
- 4a ALUMINUM STANCHIONS W/ TINTED GLASS
- 4b BALCONY GUARDRAIL TYPE B - MIN 42" H
- 4c ALUMINUM STANCHIONS WITH CLEAR GLASS
- 5 BALCONY GUARDRAIL TYPE C - MIN 42" H
- 5a PREFINISHED ALUMINUM SLATS, CHARCOAL GREY
- 6 CEMENTITIOUS CLADDING IN VERTICAL PLANKS "MILLED ARTISAN, "SHIPLAP" IN WHITE
- 6a CEMENTITIOUS FASCIA PANEL "REVEAL PANEL" IN BLACK / CHARCOAL GREY
- 6b CEMENTITIOUS CLADDING IN VERTICAL PLANKS "MILLED ARTISAN, "SHIPLAP" IN CHARCOAL GREY
- 6c CEMENTITIOUS CLADDING IN VERTICAL PLANKS "MILLED ARTISAN, "SHIPLAP" IN MED GREY
- 7 EXTRUDED ALUMINUM VERTICAL CLADDING "LONGBOARD" IN NATURAL WOOD TONE COLOR
- 8 ALUMINUM STANCHIONS WITH CLEAR GLASS / VERTICAL LOUVERS IN CLEAR ANODIZED
- 9 ARCHITECTURAL CONCRETE, CAST IN PLACE
- 9a VERTICAL CEMENTITIOUS SIDING ON CMU WALL
- 10 FIR GLULAM WOOD COLUMN
- 11 FABRIC AWNING C/W ALUMINUM SUPPORT AND LOUVRE BAND ABOVE- CHARCOAL GREY
- 12 PAINTED STEEL CANOPY IN CHARCOAL GREY C/W "LONGBOARD" ALUM SLATS SOFFIT
- 13 ALUMINUM FRAME DOOR C/W IGU - CLEAR ANODIZED
- 14 CANOPY WITH NATURAL CEDAR SOFFIT
- 15 WOOD TRELLIS
- 16 STEEL PIPE FOR SIGNAGE - CHARCOAL GREY
- 17 ROLL UP SECURITY GRILLE

- | | | |
|------------|---|---|
| 2023/03/14 | 7 | ISSUED FOR DP RESUBMISSION (OUTSTANDING #5) |
| 2023/01/30 | 6 | ISSUED FOR DP RESUBMISSION (OUTSTANDING #4) |
| 2022/10/03 | 5 | ISSUED FOR DP RESUBMISSION (OUTSTANDING #3) |
| 2021/11/30 | 4 | ISSUED FOR DP RESUBMISSION (PRIOR-TO RESPONSE R3) |
| 2021/05/17 | 3 | ISSUED FOR DP RESUBMISSION (PRIOR-TO RESPONSE R2) |
| 2021/02/19 | 2 | ISSUED FOR DP RESUBMISSION (PRIOR-TO RESPONSE) |
| 2020/09/11 | 1 | ISSUED FOR DP APPLICATION |

MIXED-USE DEVELOPMENT
319-359 WEST 49TH AVENUE,
VANCOUVER BC

DP-2020-00703
CD1-(832)

PROJECT NO. 2020-035

A3.02

SOUTH ELEVATION



1 South Elevation
A3.02 3/32" = 1'-0"



2 South Elevation Rendered
A3.02 3/32" = 1'-0"



ALL DRAWINGS AND RELATED DOCUMENTS ARE THE PROPERTY OF WINSTON CHONG ARCHITECT INC. AND MAY NOT BE REPRODUCED IN WHOLE OR IN PART WITHOUT THE ARCHITECT'S PERMISSION. DO NOT SCALE THIS DRAWING. THE CONTRACTOR MUST VERIFY AND BE RESPONSIBLE FOR ALL JOB DIMENSIONS, DRAWINGS, DETAILS, AND SPECIFICATIONS AND REPORT ANY DISCREPANCIES TO THE ARCHITECT BEFORE PROCEEDING WITH THE WORK. ALL WORK, LABOUR, MATERIAL, AND PRODUCTS MUST COMPLY WITH THE REQUIREMENTS OF THE BUILDING CODE AND RELEVANT BYLAWS AND RELATED DOCUMENTS.

MATERIAL LEGEND

- 1 VINYL WINDOWS C/W INSULATED GLASS UNITS (IGU)
- 1a OVSING DOORS IN BLK/CHARCOAL GREY FRAMES
- 2 VINYL WINDOWS C/W INSULATED GLASS UNITS (IGU)
- 2a OVSING DOORS IN WHITE FRAMES
- 3 ALUMINUM CURTAIN WALL C/W IGU / SWING DOORS IN CLEAR ANODIZED FRAMES
- 4 BALCONY GUARDRAIL TYPE A - MIN 42"H
- 4a ALUMINUM STANCHIONS W/ TINTED GLASS
- 4b BALCONY GUARDRAIL TYPE B - MIN 42" H
- 4c ALUMINUM STANCHIONS WITH CLEAR GLASS
- 5 BALCONY GUARDRAIL TYPE C - MIN 42" H
- 5a PREFINISHED ALUMINUM SLATS, CHARCOAL GREY
- 6 CEMENTITIOUS CLADDING IN VERTICAL PLANKS
- 6a "MILLED ARTISAN, "SHIPLAP" IN WHITE
- 6b CEMENTITIOUS FASCIA PANEL
- 6c "REVEAL PANEL" IN BLACK / CHARCOAL GREY
- 6d CEMENTITIOUS CLADDING IN VERTICAL PLANKS
- 6e "MILLED ARTISAN, "SHIPLAP" IN CHARCOAL GREY
- 6f CEMENTITIOUS CLADDING IN VERTICAL PLANKS
- 6g "MILLED ARTISAN, "SHIPLAP" IN MED GREY
- 7 EXTRUDED ALUMINUM VERTICAL CLADDING
- 7a "LONGBOARD" IN NATURAL WOOD TONE COLOR
- 8 ALUMINUM SSG CURTAIN WALL C/W SPANDREL GLASS / VERTICAL LOUVERS IN CLEAR ANODIZED
- 9 ARCHITECTURAL CONCRETE, CAST IN PLACE
- 9a VERTICAL CEMENTITIOUS SIDING ON CMU WALL
- 10 FIR GLULAM WOOD COLUMN
- 11 FABRIC AWNING C/W ALUMINUM SUPPORT AND LOUVRE BAND ABOVE-CHARCOAL GREY
- 12 PAINTED STEEL CANOPY IN CHARCOAL GREY C/W "LONGBOARD" ALUM SLATS SOFFIT
- 13 ALUMINUM FRAME DOOR C/W IGU - CLEAR ANODIZED
- 14 CANOPY WITH NATURAL CEDAR SOFFIT
- 15 WOOD TRELLIS
- 16 STEEL PIPE FOR SIGNAGE - CHARCOAL GREY
- 17 ROLL UP SECURITY GRILLE

DATE	REV	DESCRIPTION
2023/03/14	7	ISSUED FOR DP RESUBMISSION (OUTSTANDING #5)
2023/01/30	6	ISSUED FOR DP RESUBMISSION (OUTSTANDING #4)
2022/10/03	5	ISSUED FOR DP RESUBMISSION (OUTSTANDING #3)
2021/11/30	4	ISSUED FOR DP RESUBMISSION (PRIOR-TO RESPONSE R3)
2021/05/17	3	ISSUED FOR DP RESUBMISSION (PRIOR-TO RESPONSE R2)
2021/02/19	2	ISSUED FOR DP RESUBMISSION (PRIOR-TO RESPONSE)
2020/09/11	1	ISSUED FOR DP APPLICATION

MIXED-USE DEVELOPMENT
319-359 WEST 49TH AVENUE,
VANCOUVER BC

DP-2020-00703
CD1-(832)

PROJECT NO. 2020-035

A3.03

EAST & WEST
ELEVATION

