

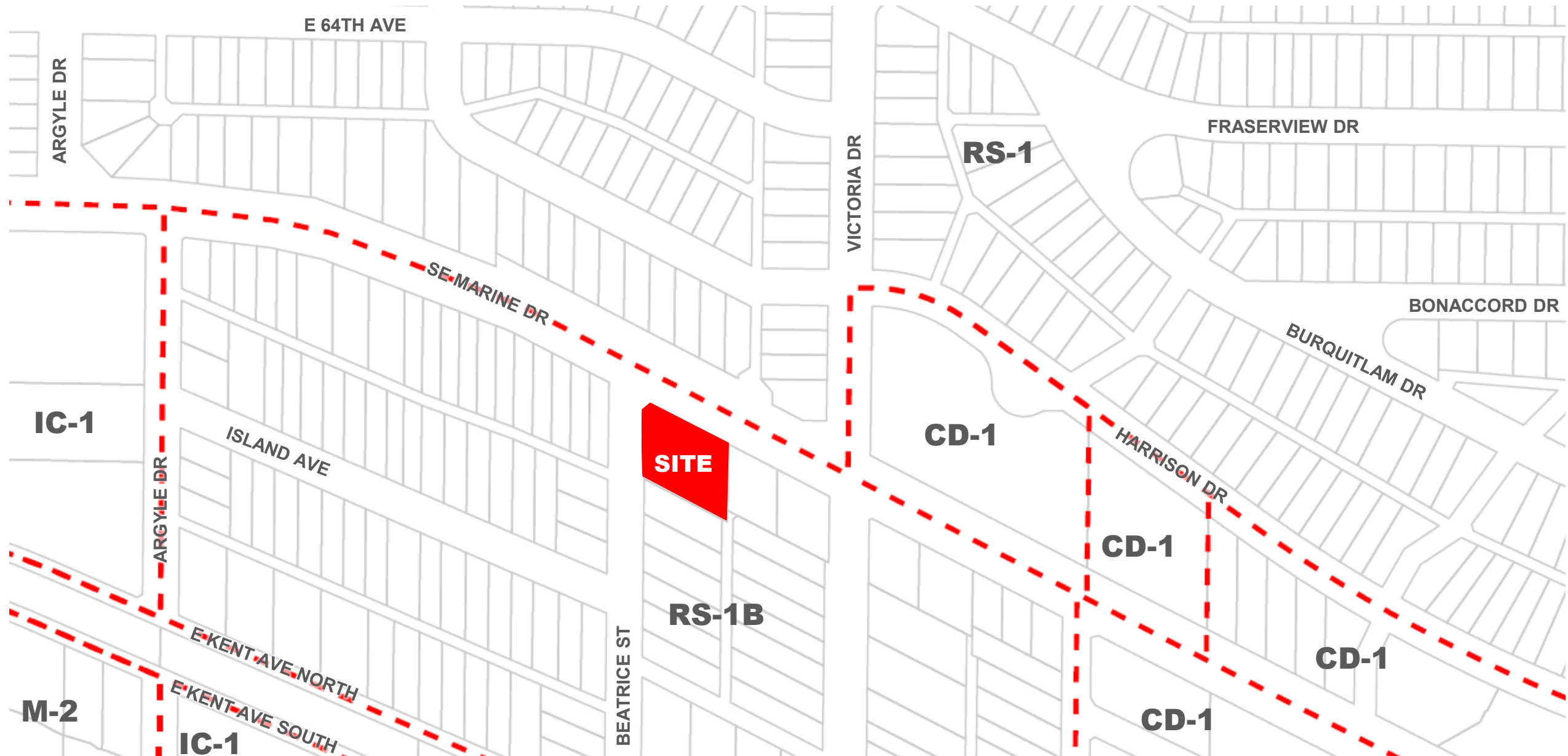


Southeast Marine Drive

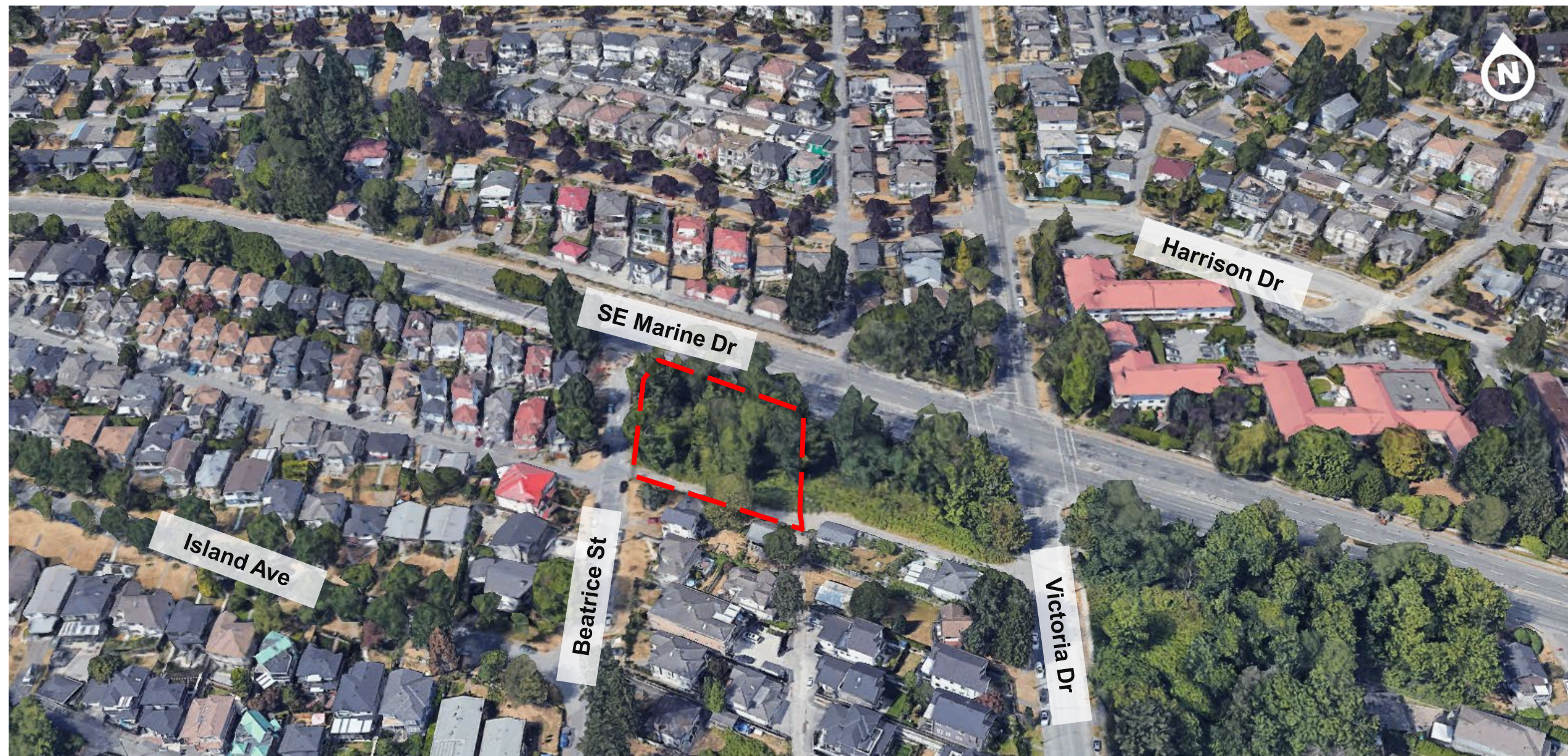


CD-1 Rezoning: 1925 Southeast Marine Drive
Public Hearing – February 14, 2023

Site and Surrounding Zoning








Existing Site and Context



Local Amenities and Services



-  Site
-  Bike Path
-  School
-  Childcare
-  Park

Policy Context



City of Vancouver *Land Use and Development Policies and Guidelines*
Community Services, 452 W. 12th Ave, Vancouver, BC V5Y 1V4 ☎ 604.873.7344 fax 604.873.7060
planning@vancouver.ca

50¢

CityPlan

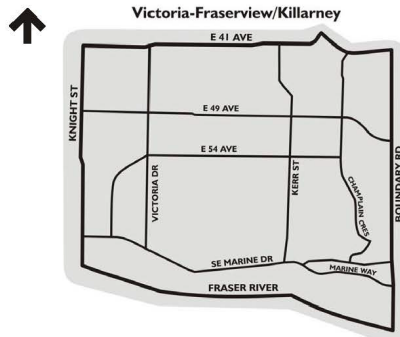
VICTORIA-FRASERVIEW/ KILLARNEY COMMUNITY VISION

Adopted by City Council on January 15, 2002

The following information has been extracted from 2 sources: the Victoria-Fraserview/Killarney Community Vision and a report adopted by Council on July 27, 2000 on conditional use applications in visioned areas. For a complete set of Council-approved Vision Directions for Victoria-Fraserview/Killarney, please refer to the "Victoria-Fraserview/Killarney Community Vision" document which is available free from the internet at vancouver.ca/visions or from the Planning Department (604.871.6126) at a cost.

1 COMMUNITY VISION: GENERAL DESCRIPTION

The Victoria-Fraserview/Killarney Community Vision applies to the area outlined on the map below.



The Victoria-Fraserview/Killarney Community Vision describes the kind of community people want Victoria-Fraserview/Killarney to become over the next 10 to 20 years. The Vision illustrates how CityPlan directions (adopted by City Council in 1995), should be implemented in Victoria-Fraserview/Killarney. Over 100 Vision Directions cover topics like: traffic on arterial streets; walking and biking; shopping areas; the environment; streets and public places; neighbourhoods; new housing; and community involvement.

January 2002



**HOUSING
VANCOUVER**

HOUSING VANCOUVER STRATEGY



Policy Context cont.



ADMINISTRATIVE REPORT

Report Date: September 18, 2014
Contact: Wendy Au / Ginger Gosnell-Myers
Contact No.: 604.871.6639 / 604.873.7209
RTS No.: 10681
VanRIMS No.: 08-2000-20
Meeting Date: October 28, 2014

TO: Vancouver City Council

FROM: City Manager

Framework for City of Reconciliation

RECOMMENDATION

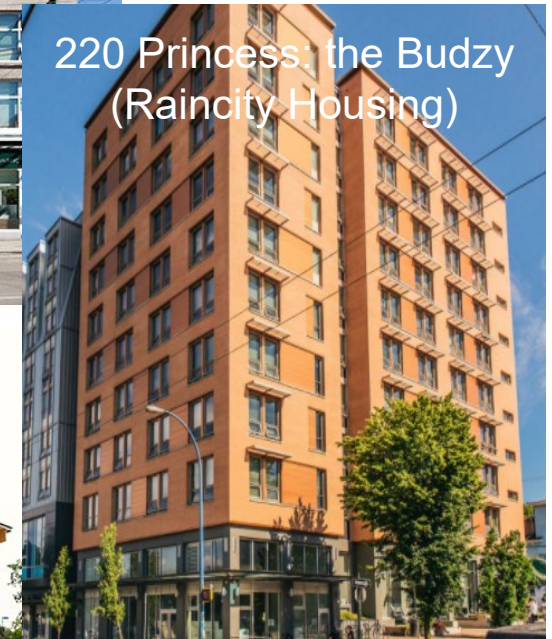
- A. THAT Council adopt the proposed framework focusing on Cultural Competency, Strengthening Relations, and Effective Decision-Making within the City's service provision and ongoing relationships with Vancouver's host First Nations, the Musqueam, Squamish, Tsleil-Waututh and urban Aboriginal community.
- B. THAT Council direct staff to develop a four year work program with report back every two years on progress and outcomes.



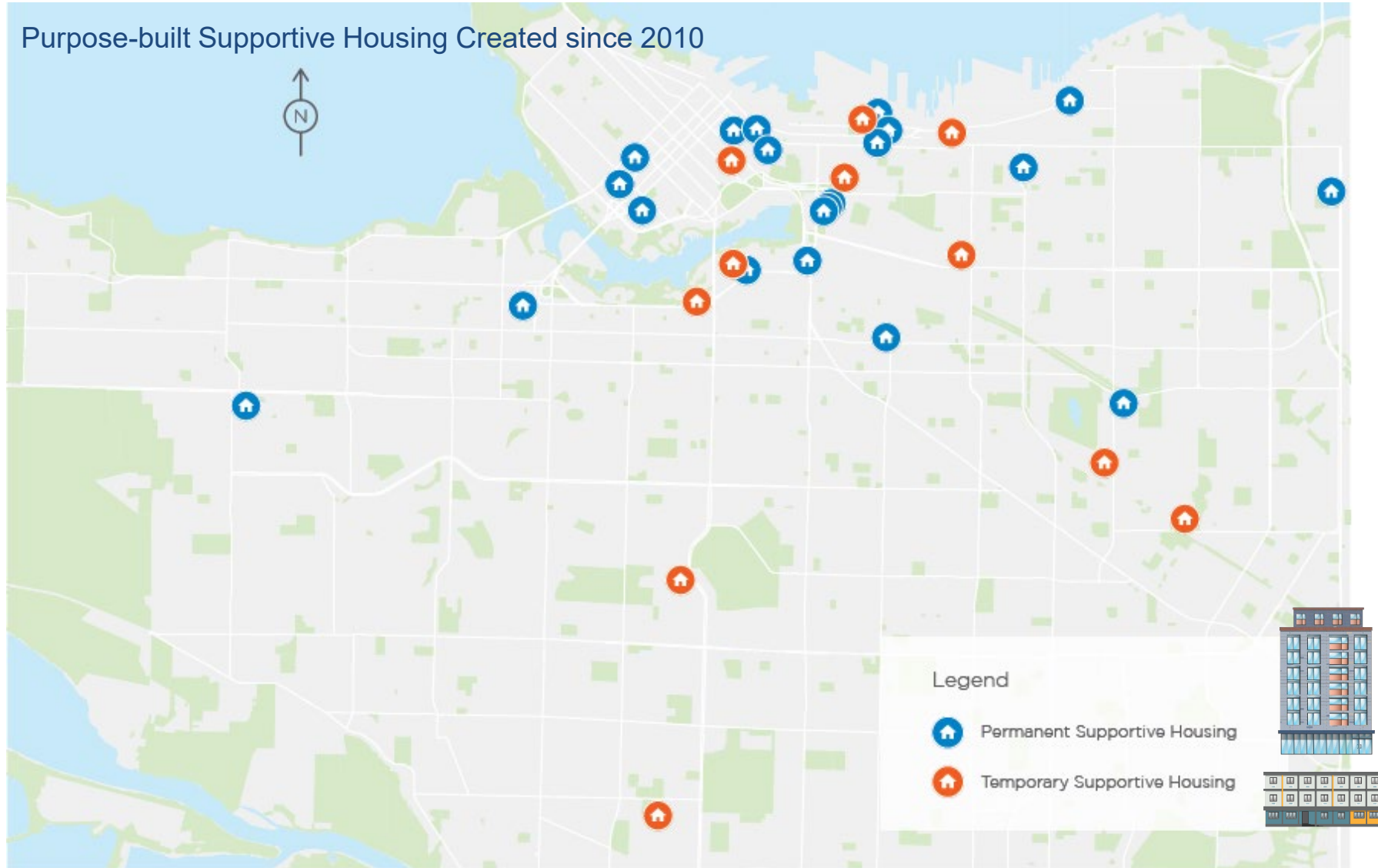
Supportive Housing in Vancouver

Total Number of Existing Self-contained Units

	Temporary Modular	Purpose-Built
Buildings	11	55
Units	720	3,130



Partnerships to Build Supportive Homes Citywide



Progress to Targets on Supportive Housing

Housing Vancouver Targets for Supportive Housing as of September 30, 2022

10-Year Target	Units Approved Towards Target
4,100	887* (22%)

*includes TMH



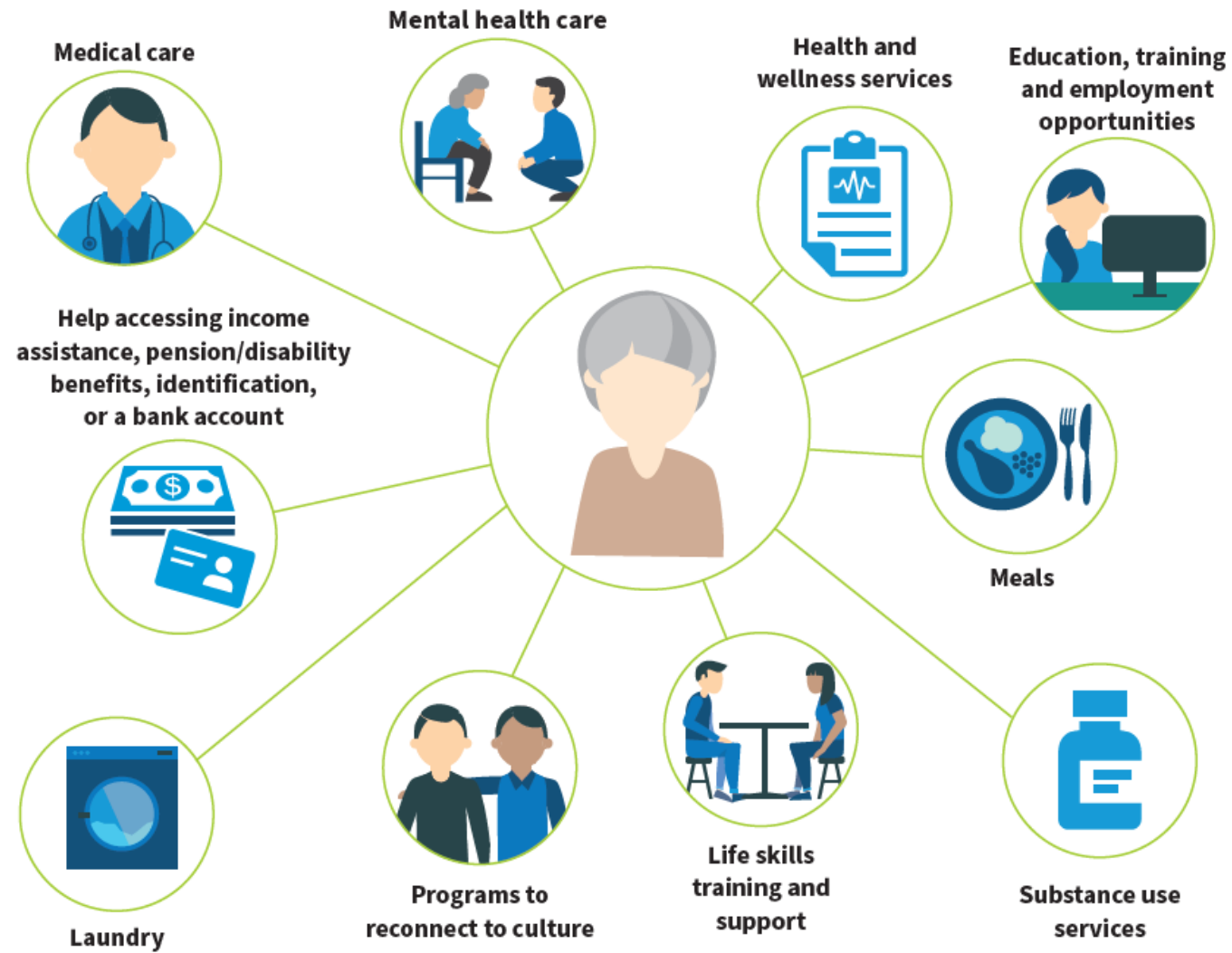
Photo Credit: Lani Brunn



Photo Credit: Lani Brunn



Supportive Housing



Proposal

- Submitted May 20, 2022
- 6-storey, Passive House certified, residential building
- Height of 82 ft.
- FSR: 2.04 (43,348 sq. ft.)
- 72 secured rental studio units
- Seven vehicle and 85 bicycle spaces



Rental Rates

		100% of Units Shelter Component of Income Assistance	
Proposed Unit Size (sq. ft.)		Max Monthly Rents	Annual Income
Studio	355	\$375	≤ \$15,000

Rezoning Pre-Application – Public Engagement (BC Housing-led)



- Site sign
- Invitations to key stakeholders to meet
- Visits to local businesses with project information
- Hand delivery of postcards to site neighbours
- 4-week public comment period
- 2 virtual Neighbourhood Dialogue sessions
- Let's Talk information webpage
- BC Housing Community Liaison email and phone

Virtual
Neighbourhood
Dialogue
Sessions



Small-group
Meetings
with Local
Organizations



Public Comment
Period



Let's Talk
Housing
Webpage



BC Housing
Community
Liaison Email
and Phone



Rezoning Application – Public Consultation



- Site sign installed June 13, 2022
- *Shape Your City* application webpage (384 signed-on)
- 760 notification postcards mailed June 23, 2022
- City-hosted Virtual Open House June 27 to July 17, 2022

Responses

Questions	135
Comment forms	26
Other input	3
Total	164

Comments of support

- Social housing
- Height, massing, density

Opinions Expressed

- Amenities and services
- Safety

Response to Feedback

Amenities and Services

- Site located in close proximity to two bus lines
- Supports offered in building and existing services throughout city

Safety

- Communities benefit on financial, social and equity objectives by providing people who were experiencing homelessness with homes and support services

Conclusion

- Application for social housing may be considered under the *Victoria-Fraserview/Killarney Community Vision*
- Application advances City's supportive housing policy goals, equity and reconciliation commitments
- Staff support application subject to conditions in Appendix B

