

# Non-Market Housing Development & Operations

## *Delivers the City's Housing Vancouver Strategy by:*



265 W. 1<sup>st</sup> (52 units) - Hummingbird Place  
PHS Community Services



Dunbar Apartments  
Coast Mental Health

- Making city sites available for non-market housing development
- Conducting predevelopment activities
- Securing partnerships with senior government, funders and operators
- Leading projects through regulatory submissions (ie. RZ, DP, BP)
- Providing development management support for our partners and funders



# 1925 Southeast Marine Drive

Public Hearing

February 14, 2023

# Partners

BC Housing, the City of Vancouver and CMHC are taking collective action to address the critical needs of people experiencing, or at risk of, homelessness.

Our shared commitment to respond quickly to these needs is captured in a Memorandum of Understanding signed in 2020.



# A homelessness crisis

More than 2,000 people across the city of Vancouver are experiencing homelessness. They are young people, seniors, people with disabilities, and people who have experienced trauma, poverty, or struggled with the high cost of housing.

Creating warm, safe homes with supports for people experiencing, or at risk of, homelessness in our communities continues to be a top priority for BC Housing and the City of Vancouver.



# Taking collective action to address the crisis

- BC Housing, City of Vancouver and CMHC are proposing a six-storey building with **72 new homes** with support services for people experiencing, or at risk of, homelessness
- All units would be studio apartments with a private bathroom and kitchen
- At least 5% of the homes would be fully accessible, with all homes designed to be universally adaptable to residents of all abilities
- The building has been designed with the health and well-being of tenants in mind
- The proposed building would also include private outdoor green space, and indoor amenities such as shared laundry, a dining area, program space, and a parkade
- The building has been designed in a way that respects the neighbourhood character



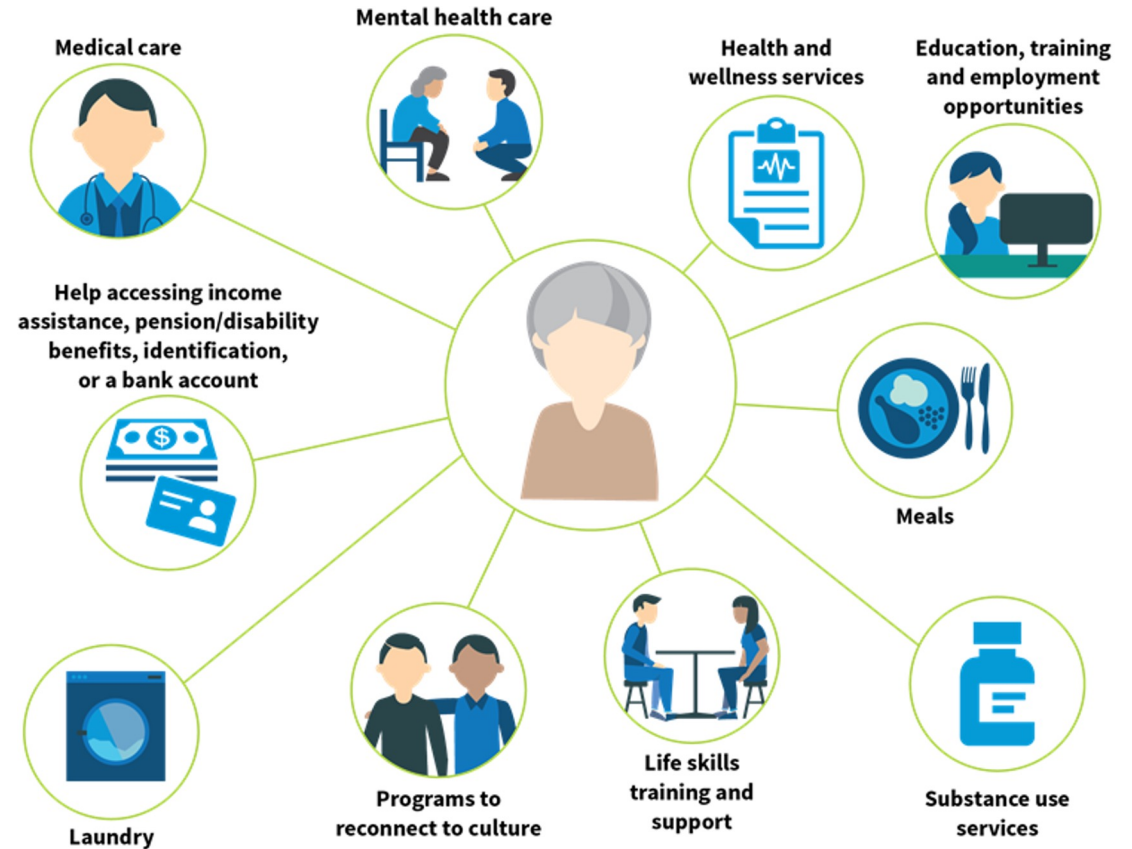


# Supportive housing: a vital connection to lifesaving supports

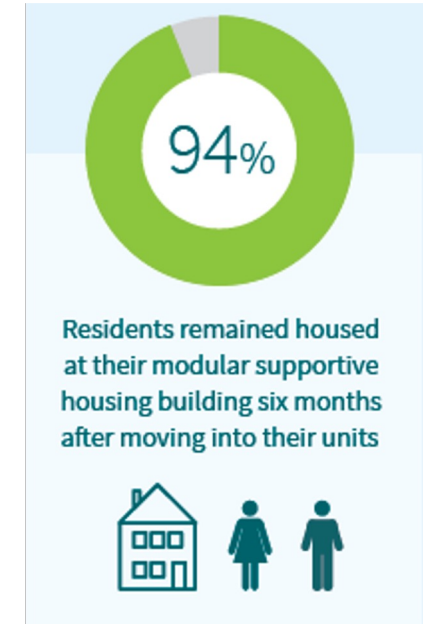
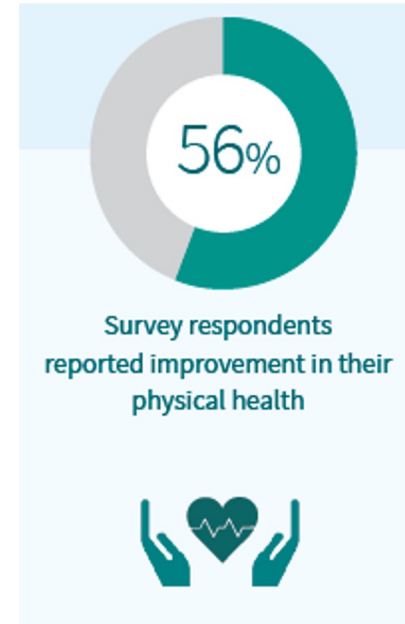
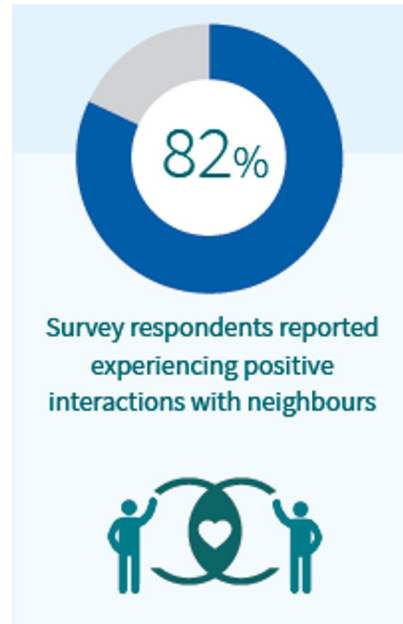
All supportive housing programs are managed by non-profit housing operators who bring:

- Professional building management experience
- Customized supports tailored to meet the unique needs of each resident
- Trained support workers who partner with each resident to develop a customized plan to meet their personal and housing goals

Some supports are offered inside the building while others are offered in the local community.



# Supportive housing outcomes: Improving people's health and well-being



# The Kettle Society

- The Kettle Society supports people in more than 400 affordable and supportive homes in Vancouver.
- The Kettle Society provides individuals with housing that feels like home. Staff provide residents with the opportunity to improve daily living skills and quality of life, promote personal recovery and become part of a community.



**The Kettle Society**



# Community input and engagement process





**Thank you**