

## MOTION

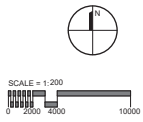
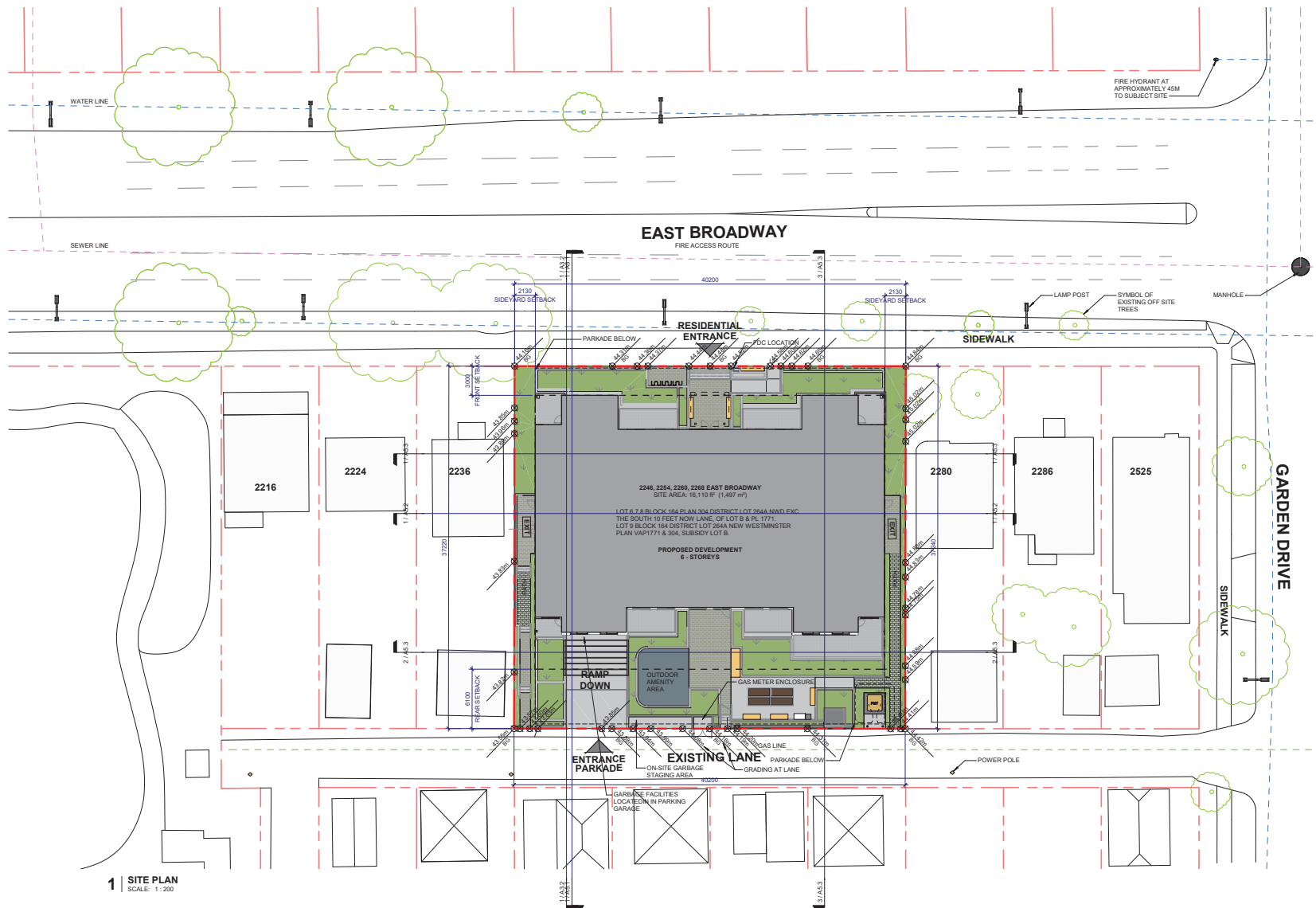
### 1. **Approval of Form of Development – 2268 East Broadway**

THAT the form of development for this portion of the site known as 2268 East Broadway (formerly known as 2246 – 2268 East Broadway) be approved generally as illustrated in the Development Application Number DP-2021-00510, prepared by Omincron AEC Ltd., and submitted electronically on November 25, 2022, provided that the Director of Planning may impose conditions and approve design changes which would not adversely affect either the development character of the site or adjacent properties.

\* \* \* \* \*

#### **Additional Background Information:**

<https://www.shapeyourcity.ca/2246-2268-e-broadway>



**LINX**  
PROJECT No. 10-18-094  
2288 EAST BROADWAY, VANCOUVER BC

**SITE PLAN**  
SCALE: 1 : 200  
OCTOBER 14, 2022



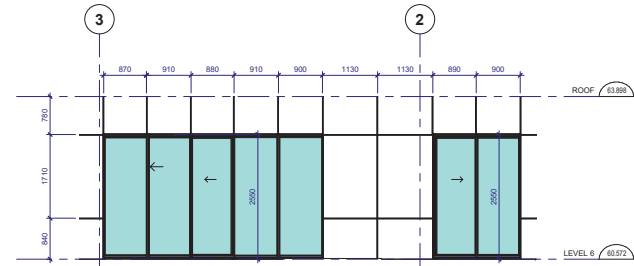
**A1.2**



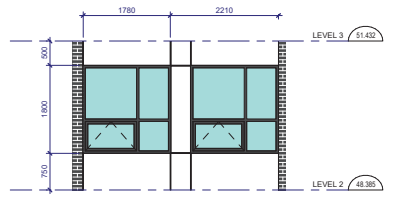
**1 | NORTH ELEVATION**  
SCALE: 1 : 100

**MATERIAL LEGEND:**

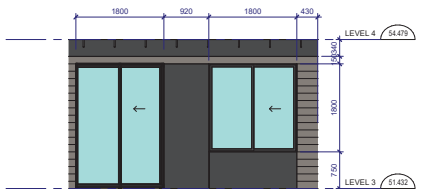
01 DOUBLE GLAZED WINDOW	07 ACRYLIC FABRIC RAIN PROTECTION CANOPY
02 CEMENTITIOUS PANEL	08 PRE-FINISHED METAL FASCIA / FLASHING (CHARCOAL COLOR)
03 CEMENTITIOUS PANEL	09 PRE-FINISHED SOFFIT
04 CEMENTITIOUS PANEL	10 GLASS & ALUMINUM (CHARCOAL COLOR) GUARDRAIL
05 CEMENTITIOUS PANEL SHIPLAP	11 DOUBLE GLAZED ALUMINUM STOREFRONT SYSTEM AND ALUMINUM DOOR (TRIM PAINTED CHARCOAL COLOR)
06 BRICK VENEER CLADDING (CHARCOAL) WITH WHITE GROUT	



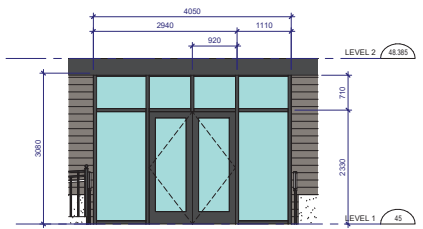
**2 | L6 UNIT GLAZING**  
SCALE: 1 : 50



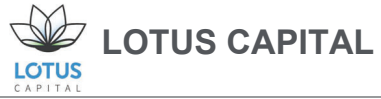
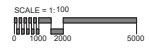
**3 | TYP. BEDROOM WINDOW**  
SCALE: 1 : 50



**4 | TYP. 1 BD GLAZING**  
SCALE: 1 : 50



**5 | RESIDENTIAL ENTRY**  
SCALE: 1 : 50



**LINX**  
PROJECT No. 10-18-094  
2268 EAST BROADWAY, VANCOUVER BC

**NORTH ELEVATION**  
SCALE: As indicated  
OCTOBER 14, 2022



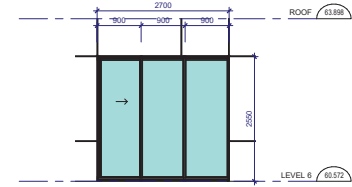
**A4.1**





**1 | SOUTH ELEVATION**  
SCALE: 1:100

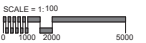
MATERIAL LEGEND:			
01	DOUBLE GLAZED WINDOW	07	ACRYLIC FABRIC RAIN PROTECTION CANOPY
02	CEMENTITIOUS PANEL	08	PRE-FINISHED METAL FASCIA / FLASHING (CHARCOAL COLOR)
03	CEMENTITIOUS PANEL	09	PRE-FINISHED SOFFIT
04	CEMENTITIOUS PANEL	10	GLASS & ALUMINUM (CHARCOAL COLOR) GUARDRAIL
05	CEMENTITIOUS PANEL SHIPLAP	11	DOUBLE GLAZED ALUMINUM STOREFRONT SYSTEM AND ALUMINUM DOOR (TRIM PAINTED CHARCOAL COLOR)
06	BRICK VENEER CLADDING (CHARCOAL) WITH WHITE GROUT		



**2 | THREE PANE SLIDING DOOR**  
SCALE: 1:50

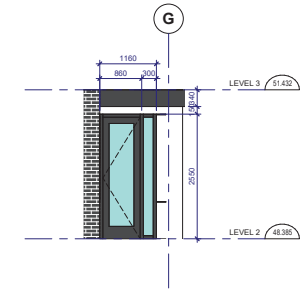


**3 | TYP. WINDOW LAYOUT**  
SCALE: 1:50



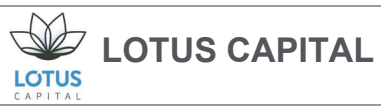
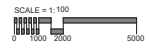


**1 | WEST ELEVATION**  
SCALE: 1:100



**2 | TYP. DOOR W/ SIDE LIGHT**  
SCALE: 1:50

MATERIAL LEGEND:			
01	DOUBLE GLAZED WINDOW	07	ACRYLIC FABRIC RAIN PROTECTION CANOPY
02	CEMENTITIOUS PANEL	08	PRE-FINISHED METAL FASCIA / FLASHING (CHARCOAL COLOR)
03	CEMENTITIOUS PANEL	09	PRE-FINISHED SOFFIT
04	CEMENTITIOUS PANEL	10	GLASS & ALUMINUM (CHARCOAL COLOR) GUARDRAIL
05	CEMENTITIOUS PANEL SHIPLAP	11	DOUBLE GLAZED ALUMINUM STOREFRONT SYSTEM AND ALUMINUM DOOR (TRIM PAINTED CHARCOAL COLOR)
06	BRICK VENEER CLADDING (CHARCOAL) WITH WHITE GROUT		



**LINX**  
PROJECT No. 10-18-094  
2268 EAST BROADWAY, VANCOUVER BC

**WEST ELEVATION**  
SCALE: As indicated  
OCTOBER 14, 2022



**A4.4**