

A.7

MOTION

7. **Approval of Form of Development – CD-1 (806) 5189 Earles Street (Previously 2725-2751 Kingsway)**

THAT the form of development for this portion of the site known as CD-1 (806) 5189 Earles Street (previously 2725-2751 Kingsway) be approved generally as illustrated in the Development Application Number DP-2021-00689, prepared by GBL Architects, and submitted electronically on April 4, 2022, provided that the Director of Planning may impose conditions and approve design changes which would not adversely affect either the development character of the site or adjacent properties.

* * * * *

Additional Background Information:

<https://shapeyourcity.ca/2725-2751-kingsway>

NOT FOR CONSTRUCTION

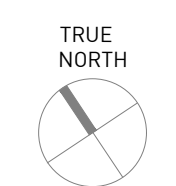
NOTES
 NO DESCRIPTION

FLOOR PLANS GENERAL NOTES
 • ALL PROPOSED YARDS, SETBACKS AND BUILDING DIMENSIONS ARE MEASURED TO THE OUTSIDE OF CLADDING
 • THE ACoustICAL MEASURES WILL BE INCORPORATED INTO THE FINAL DESIGN, BASED ON THE CONSULTANT'S RECOMMENDATIONS AS CONCURRED WITH OR AMENDED BY THE MEDICAL HEALTH OFFICER

ALL EXISTING STREET FURNITURE IN STREET RIGHT OF WAY SHALL BE PROTECTED DURING CONSTRUCTION. FINAL LOCATION OF PROPOSED STREET FURNITURE SHALL BE CONFIRMED WITH STREET FURNITURE COORDINATOR. ALL REMOVAL, RELOCATION OR INSTALLATION OF STREET FURNITURE SHALL BE BY THE CITY'S STREET FURNITURE CONTRACTOR, AND COORDINATED WITH CITY OF VANCOUVER STREET FURNITURE COORDINATOR. NOTIFICATION IS REQUIRED A MINIMUM OF 8 WEEKS PRIOR TO CONSTRUCTION

OUTDOOR PATIOS ARE NOT APPROVED UNDER DP-2021-00689

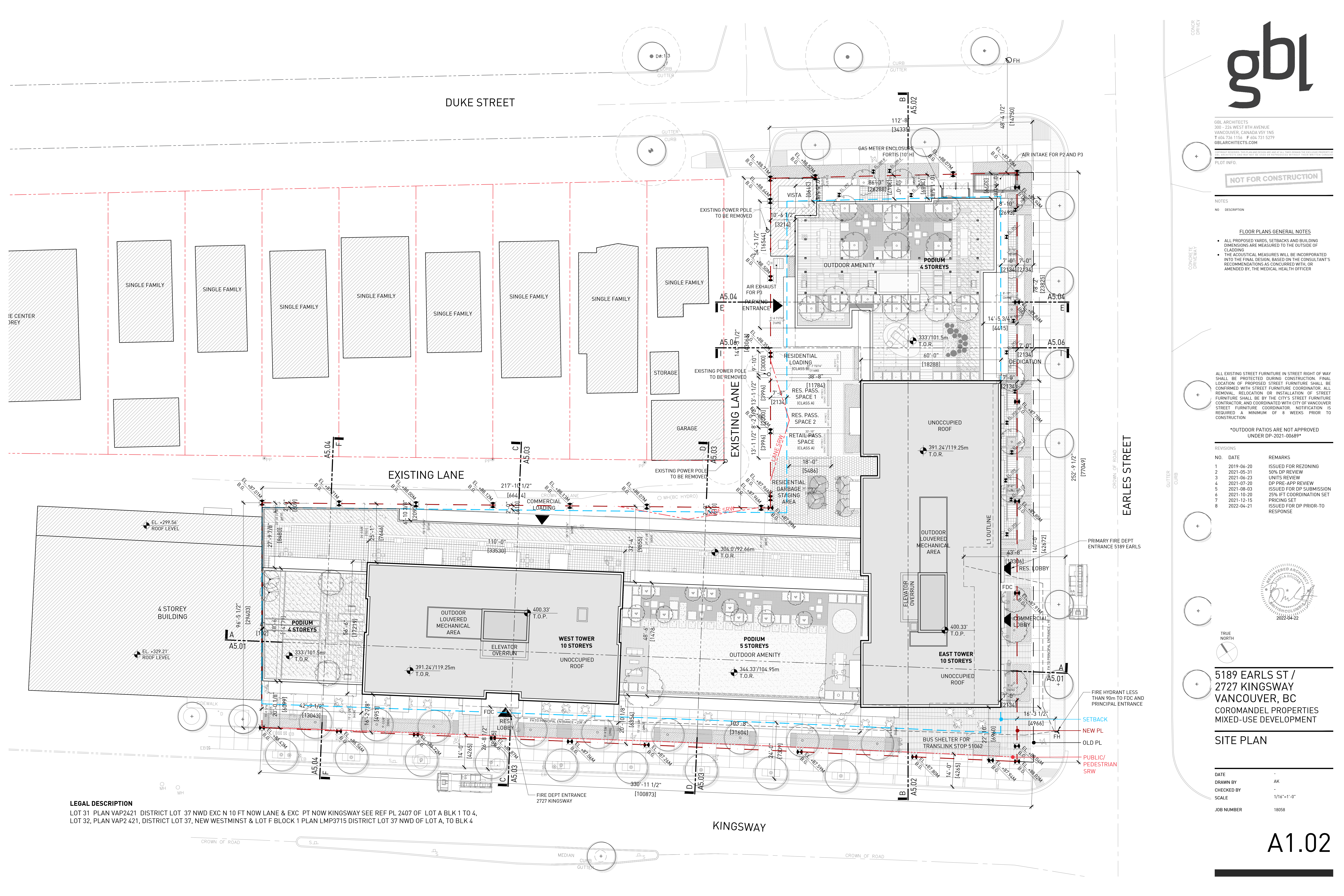
NO.	DATE	REMARKS
1	2019-06-20	ISSUED FOR REZONING
2	2021-05-31	50% DP REVIEW
3	2021-06-23	UNITS REVIEW
4	2021-07-20	DP PRE-APP REVIEW
5	2021-08-03	ISSUED FOR DP SUBMISSION
6	2021-10-20	25% IFT COORDINATION SET
7	2021-12-15	PRICING SET
8	2022-04-21	ISSUED FOR DP PRIOR-TO RESPONSE



5189 EARLS ST /
 2727 KINGSWAY
 VANCOUVER, BC
 COROMANDEL PROPERTIES
 MIXED-USE DEVELOPMENT

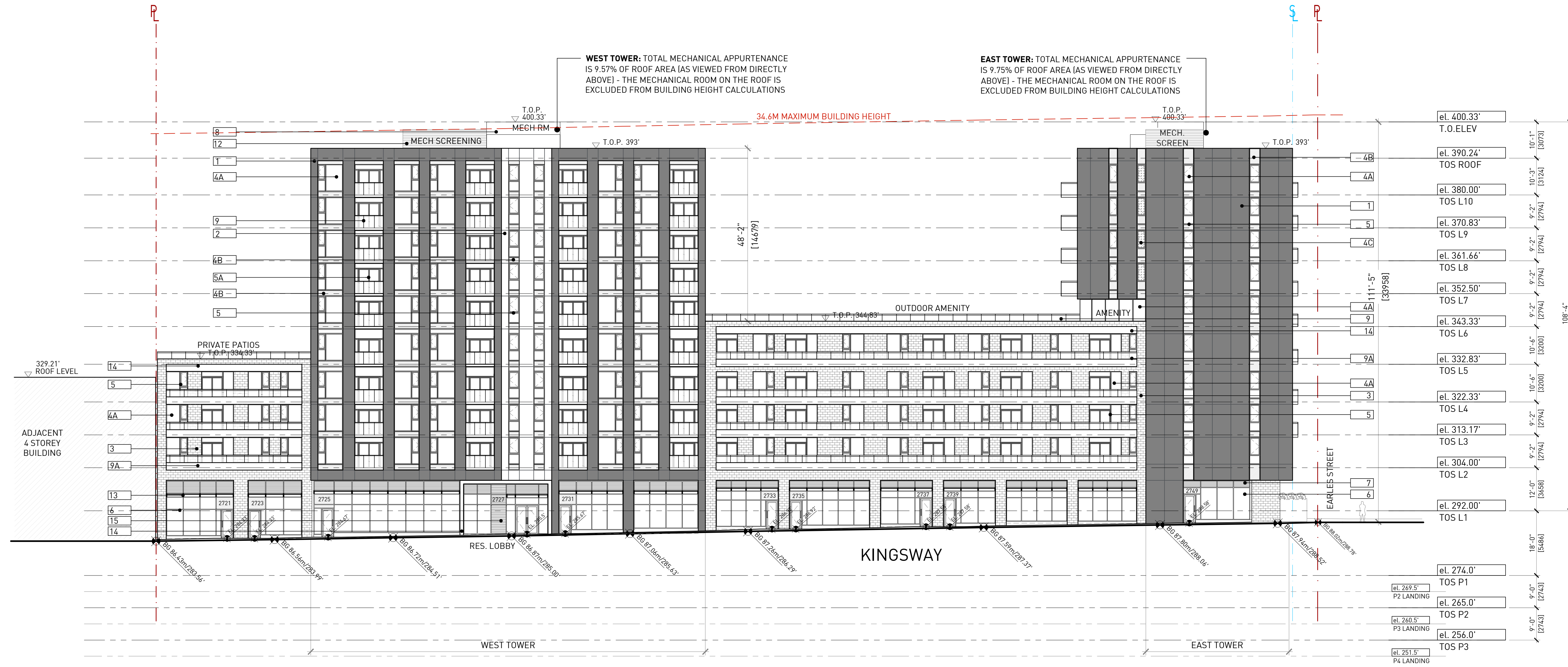
SITE PLAN

DATE	-
DRAWN BY	AK
CHECKED BY	-
SCALE	1/16"=1'-0"
JOB NUMBER	18058



LEGAL DESCRIPTION
 LOT 31 PLAN VAP2421 DISTRICT LOT 37 NWD EXC N 10 FT NOW LANE & EXC PT NOW KINGSWAY SEE REF PL 2407 OF LOT A BLK 1 TO 4,
 LOT 32, PLAN VAP2 421, DISTRICT LOT 37, NEW WESTMINST & LOT F BLOCK 1 PLAN LMP3715 DISTRICT LOT 37 NWD OF LOT A, TO BLK 4

EXTERIOR MATERIALS		
TYPE	NAME	DESCRIPTION
1	INSULATED METAL PANEL	COLOUR TBL BLACK
2	INSULATED METAL PANEL	COLOUR BONE WHITE
3	BRICK	BRICK (MOTTLED PATTERN). COLOUR: 10% DOWNING BLACK VELOUR 30% ALSAKA WHITE VELOUR 60% ENGLISH GRAY VELOUR
4A	WINDOW WALL	CLEAR GLAZING
4B	SPANDREL/BYPASS PANEL	BACK PAINTED DOUBLE GLAZED. COLOUR BONE WHITE
4C	WINDOW WALL	FROSTED GLAZING
5	WINDOW-WALL FRAMING	TO MATCH BONE WHITE
5A	WINDOW-WALL FRAMING	COLOUR BLACK ANODIZED ALUMINUM
6	STOREFRONT WITH CLEAR GLASS	CLEAR ANODIZED FRAMING
7	ANODIZED ALUMINUM - LOUVERS	CLEAR ANODIZED ALUMINUM
8	C.I.P. PAINTED CONCRETE	COLOUR BENJAMIN MOORE STORMY MONDAY 2112-50
8A	C.I.P. PAINTED CONCRETE	MULTI-COLOUR VERTICAL BANDS - FINAL COLOURS TBD
8B	C.I.P. PAINTED CONCRETE	COLOUR BENJAMIN MOORE MIDSUMMER NIGHT 2134-20
8C	C.I.P. PAINTED CONCRETE	COLOUR TO MATCH WITH MATERIAL 1 (TBL BLACK)
9	CLEAR GLASS GUARD WITH PRE-FINISHED ALUMINUM FRAMING	PRE-FINISHED ALUMINUM GUARDS. FRAMING COLOUR BONE WHITE
9A	BYPASS GUARDRAILS WITH PRE-FINISHED ALUMINUM FRAMING	50: VISION GLASS - 50% WHITE METAL PANEL (COLOUR BONE WHITE)
10	POWDER-COATED METAL AWNING STYLE CANOPY	COLOUR TO MATCH WITH MATERIAL 1 (TBL BLACK)
11	METAL PULL-UP GATE	CLEAR ANODIZED ALUMINUM
12	POWDER COATED METAL SCREEN	COLOUR BONE WHITE
13	POWDER COATED METAL CANOPY C/W TEMPERED TRANSLUCENT GLASS	COLOUR BONE WHITE
14	POWDER COATED ALUMINUM FASCIA PANEL	COLOUR BONE WHITE
15	ALUMINUM BATTENS	POWDER COATED COLOUR BEIGE
16	INSULATED CEMENT PANEL	COLOUR - RAW CONCRETE



NO.	DATE	REMARKS
1	2019-06-20	ISSUED FOR REZONING
2	2021-05-31	50% DP REVIEW
3	2021-06-23	UNITS REVIEW
4	2021-07-20	DP PRE-APP REVIEW
5	2021-08-03	ISSUED FOR DP SUBMISSION
6	2021-10-20	25% IFT COORDINATION SET
7	2021-12-15	PRICING SET
8	2022-04-21	ISSUED FOR DP PRIOR-TO RESPONSE



5189 EARLS ST /
2727 KINGSWAY
VANCOUVER, BC
COROMANDEL PROPERTIES
MIXED-USE DEVELOPMENT

KINGSWAY ELEVATION

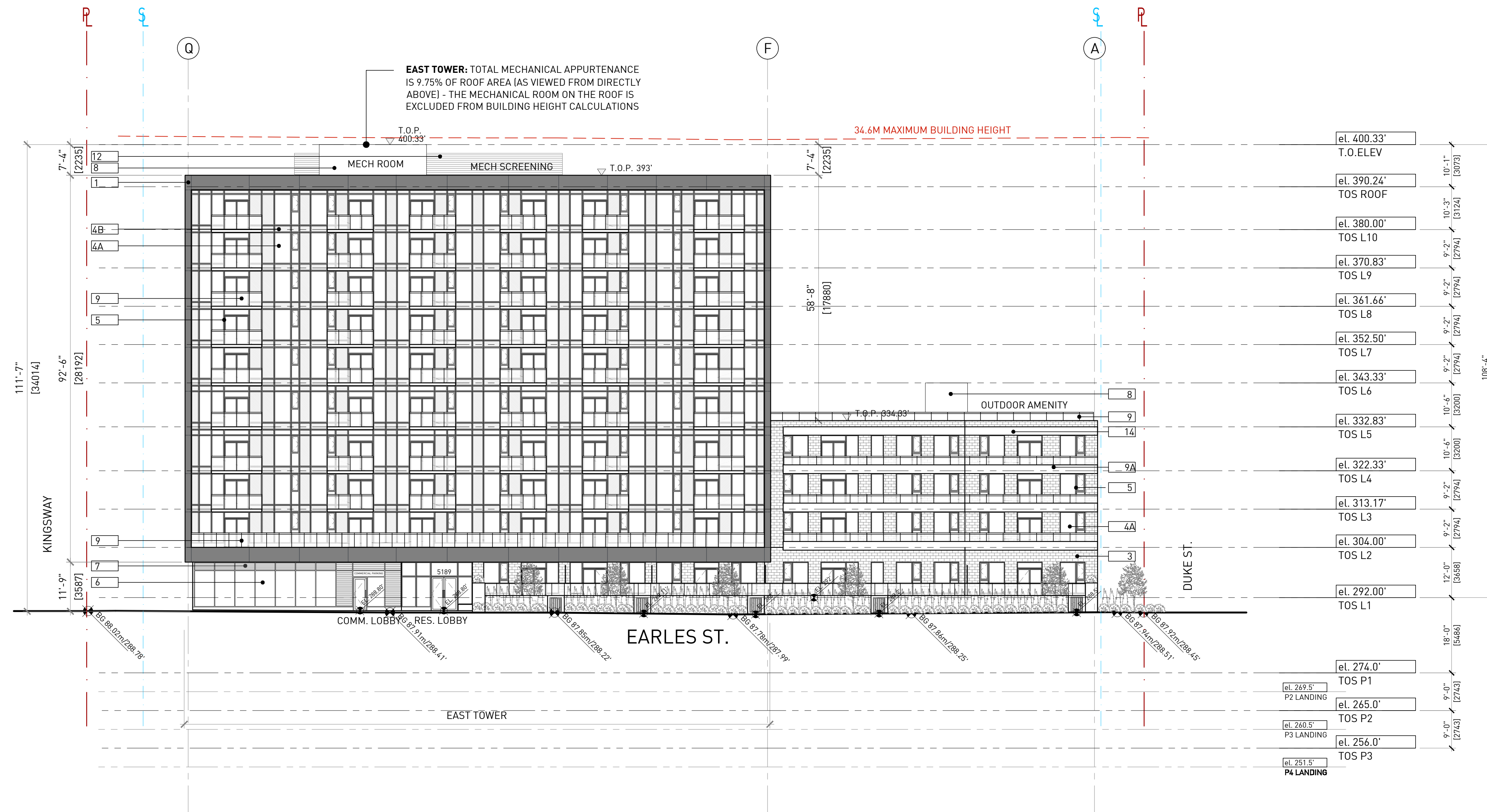
DATE	-
DRAWN BY	AK
CHECKED BY	-
SCALE	1/16"=1'-0"
JOB NUMBER	18058

NOT FOR CONSTRUCTION

NOTES

NO DESCRIPTION

EXTERIOR MATERIALS		
TYPE	NAME	DESCRIPTION
1	INSULATED METAL PANEL	COLOUR TBL BLACK
2	INSULATED METAL PANEL	COLOUR BONE WHITE
3	BRICK	BRICK (MOTTLED PATTERN), COLOUR: 10% DOWNING BLACK VELOUR 30% ALSAKA WHITE VELOUR 60% ENGLISH GRAY VELOUR
4A	WINDOW WALL	CLEAR GLAZING
4B	SPANDREL/BYPASS PANEL	BACK PAINTED DOUBLE GLAZED, COLOUR BONE WHITE
4C	WINDOW WALL	FROSTED GLAZING
5	WINDOW-WALL FRAMING	TO MATCH BONE WHITE
5A	WINDOW-WALL FRAMING	COLOUR BLACK ANODIZED ALUMINUM
6	STOREFRONT WITH CLEAR GLASS	CLEAR ANODIZED FRAMING
7	ANODIZED ALUMINUM - LOUVERS	CLEAR ANODIZED ALUMINUM
8	C.I.P. PAINTED CONCRETE	COLOUR BENJAMIN MOORE STORMY MONDAY 2112-50
8A	C.I.P. PAINTED CONCRETE	MULTI-COLOUR VERTICAL BANDS - FINAL COLOURS TBD
8B	C.I.P. PAINTED CONCRETE	COLOUR BENJAMIN MOORE MIDSUMMER NIGHT 2134-20
8C	C.I.P. PAINTED CONCRETE	COLOUR TO MATCH WITH MATERIAL 1 (TBL BLACK)
9	CLEAR GLASS GUARD WITH PRE-FINISHED ALUMINUM FRAMING	PRE-FINISHED ALUMINUM GUARDS, FRAMING COLOUR BONE WHITE
9A	BYPASS GUARDRAILS WITH PRE-FINISHED ALUMINUM FRAMING	50: VISION GLASS - 50% WHITE METAL PANEL (COLOUR BONE WHITE)
10	POWDER-COATED METAL AWNING STYLE CANOPY	COLOUR TO MATCH WITH MATERIAL 1 (TBL BLACK)
11	METAL PULL-UP GATE	CLEAR ANODIZED ALUMINUM
12	POWDER COATED METAL SCREEN	COLOUR BONE WHITE
13	POWDER COATED METAL CANOPY C/W TEMPERED TRANSLUCENT GLASS	COLOUR BONE WHITE
14	POWDER COATED ALUMINUM FASCIA PANEL	COLOUR BONE WHITE
15	ALUMINUM BATTENS	POWDER COATED COLOUR BEIGE
16	INSULATED CEMENT PANEL	COLOUR - RAW CONCRETE



REVISIONS		
NO.	DATE	REMARKS
1	2019-06-20	ISSUED FOR REZONING
2	2021-05-31	50% DP REVIEW
3	2021-06-23	UNITS REVIEW
4	2021-07-20	DP PRE-APP REVIEW
5	2021-08-03	ISSUED FOR DP SUBMISSION
6	2021-10-20	25% IFT COORDINATION SET
7	2021-12-15	PRICING SET
8	2022-04-21	ISSUED FOR DP PRIOR-TO RESPONSE

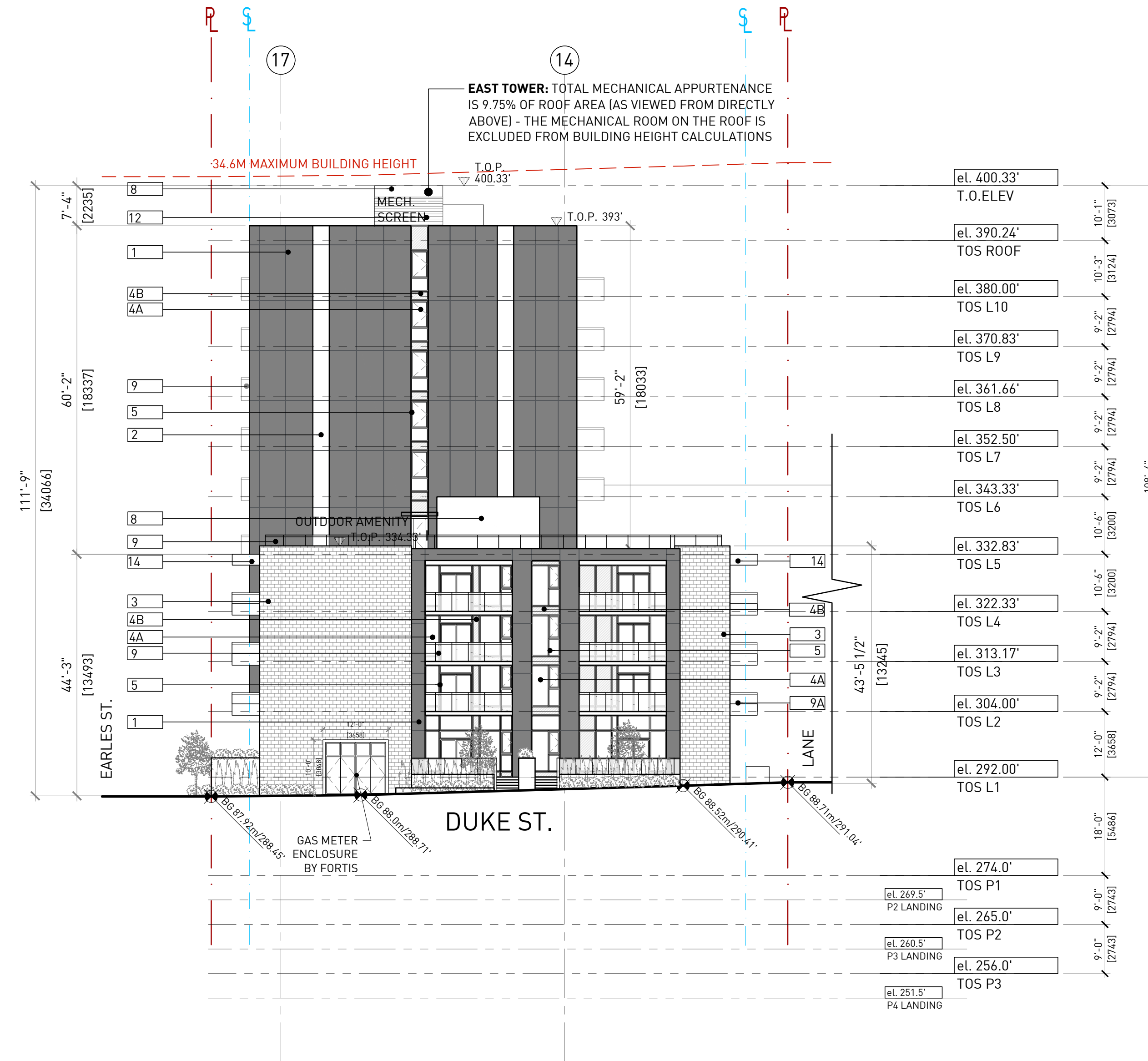


5189 EARLS ST /
2727 KINGSWAY
VANCOUVER, BC
COROMANDEL PROPERTIES
MIXED-USE DEVELOPMENT

EARLES ST. ELEVATION

DATE	-
DRAWN BY	AK
CHECKED BY	-
SCALE	1/16"=1'-0"
JOB NUMBER	18058

EXTERIOR MATERIALS		
TYPE	NAME	DESCRIPTION
1	INSULATED METAL PANEL	COLOUR TBL BLACK
2	INSULATED METAL PANEL	COLOUR BONE WHITE
3	BRICK	BRICK (MOTTLED PATTERN), COLOUR: 10% DOWNING BLACK VELOUR 30% ALSAKA WHITE VELOUR 60% ENGLISH GRAY VELOUR
4A	WINDOW WALL	CLEAR GLAZING
4B	SPANDREL/BYPASS PANEL	BACK PAINTED DOUBLE GLAZED, COLOUR BONE WHITE
4C	WINDOW WALL	FROSTED GLAZING
5	WINDOW-WALL FRAMING	TO MATCH BONE WHITE
5A	WINDOW-WALL FRAMING	COLOUR BLACK ANODIZED ALUMINUM
6	STOREFRONT WITH CLEAR GLASS	CLEAR ANODIZED FRAMING
7	ANODIZED ALUMINUM - LOUVERS	CLEAR ANODIZED ALUMINUM
8	C.I.P. PAINTED CONCRETE	COLOUR BENJAMIN MOORE STORMY MONDAY 2112-50
8A	C.I.P. PAINTED CONCRETE	MULTI-COLOUR VERTICAL BANDS - FINAL COLOURS TBD
8B	C.I.P. PAINTED CONCRETE	COLOUR BENJAMIN MOORE MIDSUMMER NIGHT 2134-20
8C	C.I.P. PAINTED CONCRETE	COLOUR TO MATCH WITH MATERIAL 1 (TBL BLACK)
9	CLEAR GLASS GUARD WITH PRE-FINISHED ALUMINUM FRAMING	PRE-FINISHED ALUMINUM GUARDS, FRAMING COLOUR BONE WHITE
9A	BYPASS GUARDRAILS WITH PRE-FINISHED ALUMINUM FRAMING	50: VISION GLASS - 50% WHITE METAL PANEL (COLOUR BONE WHITE)
10	POWDER-COATED METAL AWNING STYLE CANOPY	COLOUR TO MATCH WITH MATERIAL 1 (TBL BLACK)
11	METAL PULL-UP GATE	CLEAR ANODIZED ALUMINUM
12	POWDER COATED METAL SCREEN	COLOUR BONE WHITE
13	POWDER COATED METAL CANOPY C/W TEMPERED TRANSLUCENT GLASS	COLOUR BONE WHITE
14	POWDER COATED ALUMINUM FASCIA PANEL	COLOUR BONE WHITE
15	ALUMINUM BATTENS	POWDER COATED COLOUR BEIGE
16	INSULATED CEMENT PANEL	COLOUR - RAW CONCRETE



REVISIONS		
NO.	DATE	REMARKS
1	2019-06-20	ISSUED FOR REZONING
2	2021-05-31	50% DP REVIEW
3	2021-06-23	UNITS REVIEW
4	2021-07-20	DP PRE-APP REVIEW
5	2021-08-03	ISSUED FOR DP SUBMISSION
6	2021-10-20	25% IFT COORDINATION SET
7	2021-12-15	PRICING SET
8	2022-04-21	ISSUED FOR DP PRIOR-TO RESPONSE

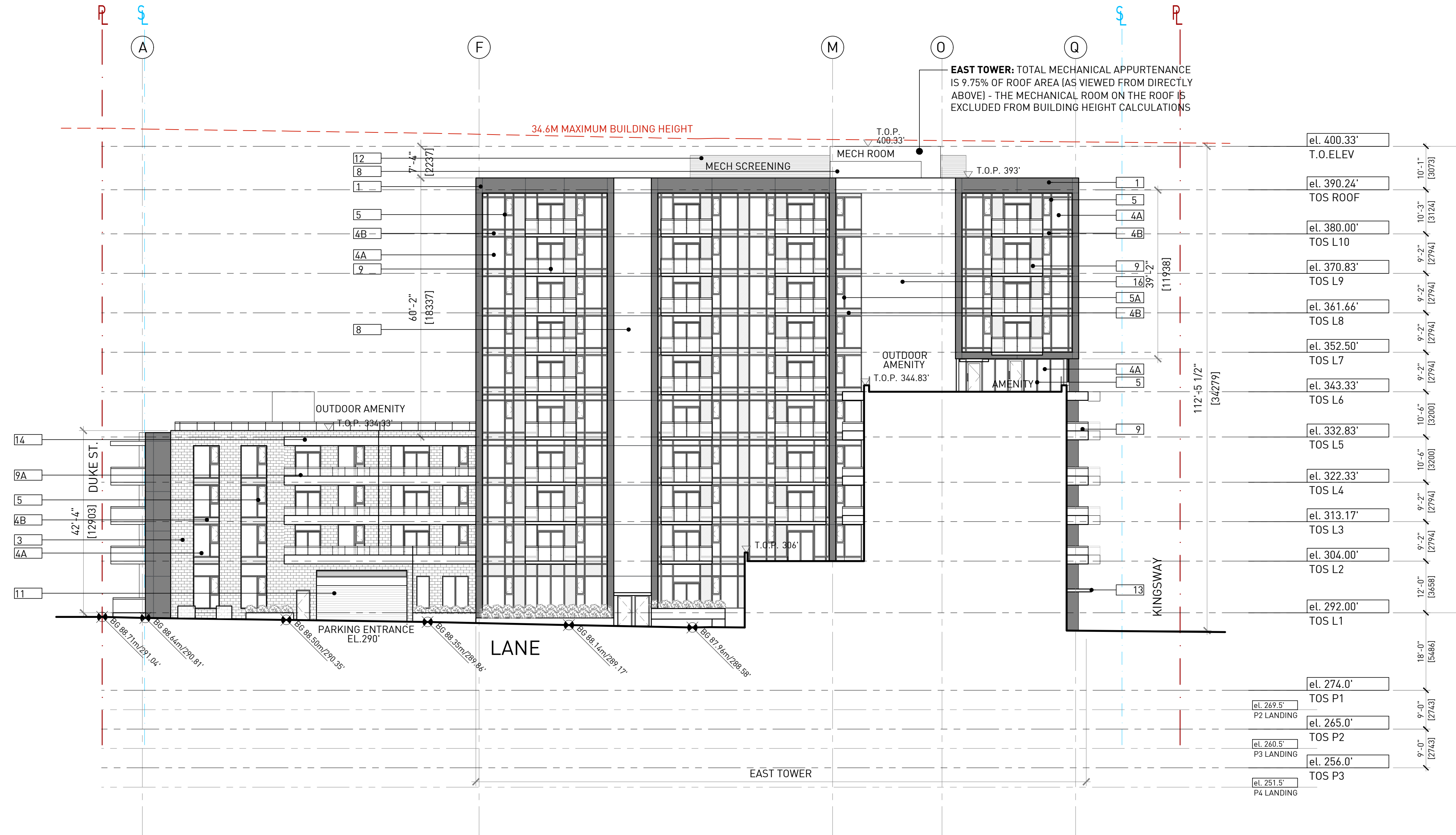


5189 EARLES ST /
2727 KINGSWAY
VANCOUVER, BC
COROMANDEL PROPERTIES
MIXED-USE DEVELOPMENT

DUKE ST. ELEVATION

DATE	-
DRAWN BY	AK
CHECKED BY	-
SCALE	1/16"=1'-0"
JOB NUMBER	18058

EXTERIOR MATERIALS		
TYPE	NAME	DESCRIPTION
1	INSULATED METAL PANEL	COLOUR TBL BLACK
2	INSULATED METAL PANEL	COLOUR BONE WHITE
3	BRICK	BRICK (MOTTLED PATTERN), COLOUR: 10% DOWNING BLACK VELOUR 30% ALSAKA WHITE VELOUR 60% ENGLISH GRAY VELOUR
4A	WINDOW WALL	CLEAR GLAZING
4B	SPANDREL/BYPASS PANEL	BACK PAINTED DOUBLE GLAZED, COLOUR BONE WHITE
4C	WINDOW WALL	FROSTED GLAZING
5	WINDOW-WALL FRAMING	TO MATCH BONE WHITE
5A	WINDOW-WALL FRAMING	COLOUR BLACK ANODIZED ALUMINUM
6	STOREFRONT WITH CLEAR GLASS	CLEAR ANODIZED FRAMING
7	ANODIZED ALUMINUM - LOUVERS	CLEAR ANODIZED ALUMINUM
8	C.I.P. PAINTED CONCRETE	COLOUR BENJAMIN MOORE STORMY MONDAY 2112-50
8A	C.I.P. PAINTED CONCRETE	MULTI-COLOUR VERTICAL BANDS - FINAL COLOURS TBD
8B	C.I.P. PAINTED CONCRETE	COLOUR BENJAMIN MOORE MIDSUMMER NIGHT 2134-20
8C	C.I.P. PAINTED CONCRETE	COLOUR TO MATCH WITH MATERIAL 1 (TBL BLACK)
9	CLEAR GLASS GUARD WITH PRE-FINISHED ALUMINUM FRAMING	PRE-FINISHED ALUMINUM GUARDS, FRAMING COLOUR BONE WHITE
9A	BYPASS GUARDRAILS WITH PRE-FINISHED ALUMINUM FRAMING	50: VISION GLASS - 50% WHITE METAL PANEL (COLOUR BONE WHITE)
10	POWDER-COATED METAL AWNING STYLE CANOPY	COLOUR TO MATCH WITH MATERIAL 1 (TBL BLACK)
11	METAL PULL-UP GATE	CLEAR ANODIZED ALUMINUM
12	POWDER COATED METAL SCREEN	COLOUR BONE WHITE
13	POWDER COATED METAL CANOPY C/W TEMPERED TRANSLUCENT GLASS	COLOUR BONE WHITE
14	POWDER COATED ALUMINUM FASCIA PANEL	COLOUR BONE WHITE
15	ALUMINUM BATTENS	POWDER COATED COLOUR BEIGE
16	INSULATED CEMENT PANEL	COLOUR - RAW CONCRETE



NO.	DATE	REMARKS
1	2019-06-20	ISSUED FOR REZONING
2	2021-05-31	50% DP REVIEW
3	2021-06-23	UNITS REVIEW
4	2021-07-20	DP PRE-APP REVIEW
5	2021-08-03	ISSUED FOR DP SUBMISSION
6	2021-10-20	25% IFT COORDINATION SET
7	2021-12-15	PRICING SET
8	2022-04-21	ISSUED FOR DP PRIOR-TO RESPONSE



5189 EARLS ST /
2727 KINGSWAY
VANCOUVER, BC
COROMANDEL PROPERTIES
MIXED-USE DEVELOPMENT

N-S LANE ELEVATION

DATE	-
DRAWN BY	AK
CHECKED BY	-
SCALE	1/16"=1'-0"
JOB NUMBER	18058

EXTERIOR MATERIALS		
TYPE	NAME	DESCRIPTION
1	INSULATED METAL PANEL	COLOUR TBL BLACK
2	INSULATED METAL PANEL	COLOUR BONE WHITE
3	BRICK	BRICK (MOTTLED PATTERN), COLOUR: 10% DOWNING BLACK VELOUR 30% ALSAKA WHITE VELOUR 60% ENGLISH GRAY VELOUR
4A	WINDOW WALL	CLEAR GLAZING
4B	SPANDREL/BYPASS PANEL	BACK PAINTED DOUBLE GLAZED, COLOUR BONE WHITE
4C	WINDOW WALL	FROSTED GLAZING
5	WINDOW-WALL FRAMING	TO MATCH BONE WHITE
5A	WINDOW-WALL FRAMING	COLOUR BLACK ANODIZED ALUMINUM
6	STOREFRONT WITH CLEAR GLASS	CLEAR ANODIZED FRAMING
7	ANODIZED ALUMINUM - LOUVERS	CLEAR ANODIZED ALUMINUM
8	C.I.P. PAINTED CONCRETE	COLOUR BENJAMIN MOORE STORMY MONDAY 2112-50
8A	C.I.P. PAINTED CONCRETE	MULTI-COLOUR VERTICAL BANDS - FINAL COLOURS TBD
8B	C.I.P. PAINTED CONCRETE	COLOUR BENJAMIN MOORE MIDSUMMER NIGHT 2134-20
8C	C.I.P. PAINTED CONCRETE	COLOUR TO MATCH WITH MATERIAL 1 (TBL BLACK)
9	CLEAR GLASS GUARD WITH PRE-FINISHED ALUMINUM FRAMING	PRE-FINISHED ALUMINUM GUARDS, FRAMING COLOUR BONE WHITE
9A	BYPASS GUARDRAILS WITH PRE-FINISHED ALUMINUM FRAMING	50: VISION GLASS - 50% WHITE METAL PANEL (COLOUR BONE WHITE)
10	POWDER-COATED METAL AWNING STYLE CANOPY	COLOUR TO MATCH WITH MATERIAL 1 (TBL BLACK)
11	METAL PULL-UP GATE	CLEAR ANODIZED ALUMINUM
12	POWDER COATED METAL SCREEN	COLOUR BONE WHITE
13	POWDER COATED METAL CANOPY C/W TEMPERED TRANSLUCENT GLASS	COLOUR BONE WHITE
14	POWDER COATED ALUMINUM FASCIA PANEL	COLOUR BONE WHITE
15	ALUMINUM BATTENS	POWDER COATED COLOUR BEIGE
16	INSULATED CEMENT PANEL	COLOUR - RAW CONCRETE

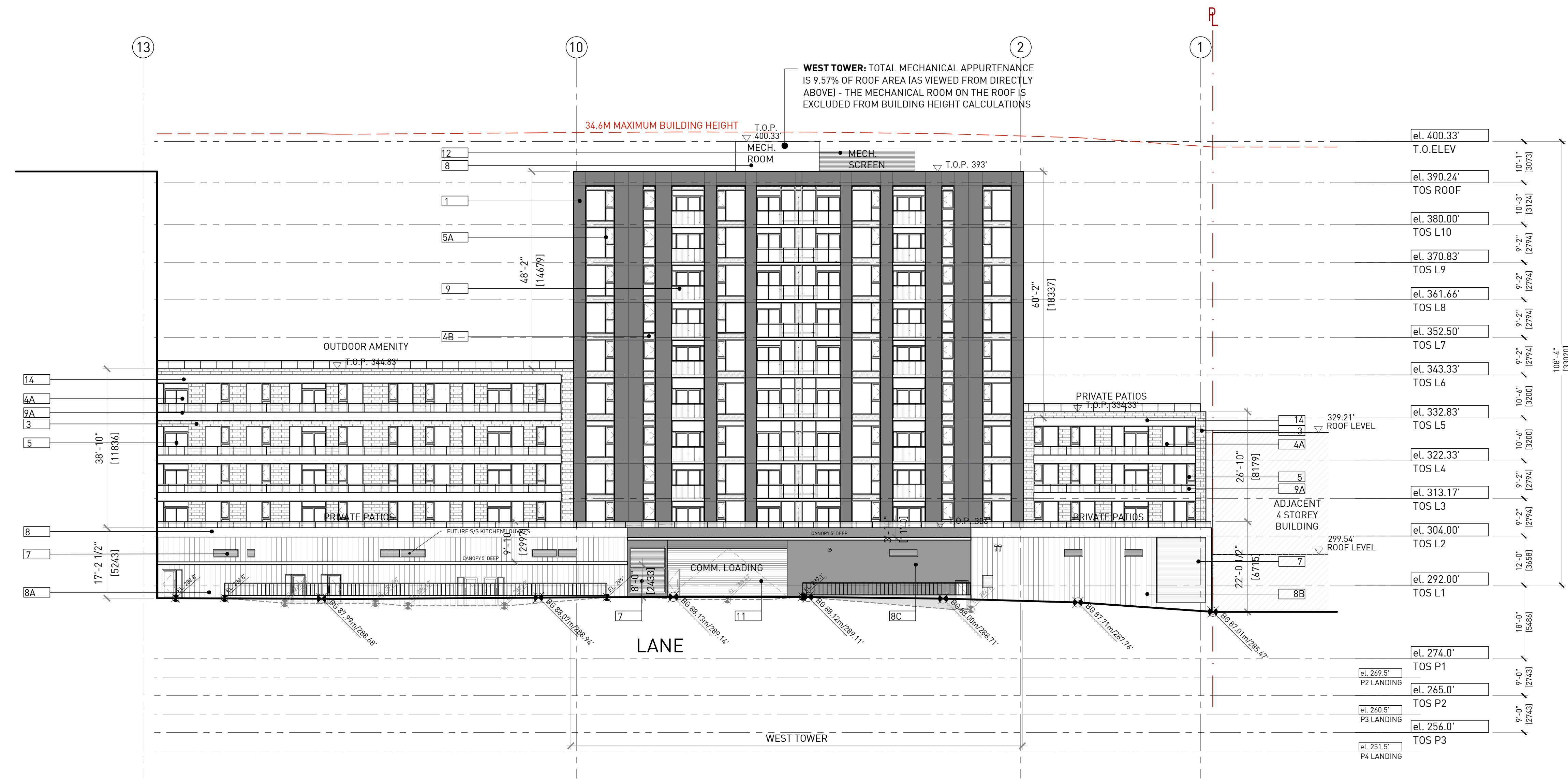
REVISIONS		
NO.	DATE	REMARKS
1	2019-06-20	ISSUED FOR REZONING
2	2021-05-31	50% DP REVIEW
3	2021-06-23	UNITS REVIEW
4	2021-07-20	DP PRE-APP REVIEW
5	2021-08-03	ISSUED FOR DP SUBMISSION
6	2021-10-20	25% IFT COORDINATION SET
7	2021-12-15	PRICING SET
8	2022-04-21	ISSUED FOR DP PRIOR-TO RESPONSE



5189 EARLS ST /
 2727 KINGSWAY
 VANCOUVER, BC
 COROMANDEL PROPERTIES
 MIXED-USE DEVELOPMENT

E-W LANE ELEVATION

DATE	-
DRAWN BY	AK
CHECKED BY	-
SCALE	1/16"=1'-0"
JOB NUMBER	18058





GBL ARCHITECTS
 300 - 724 WEST 8TH AVENUE
 VANCOUVER, CANADA V6Y 1Y6
 T 604.736.1156 F 604.731.5279
 GBLARCHITECTS.COM

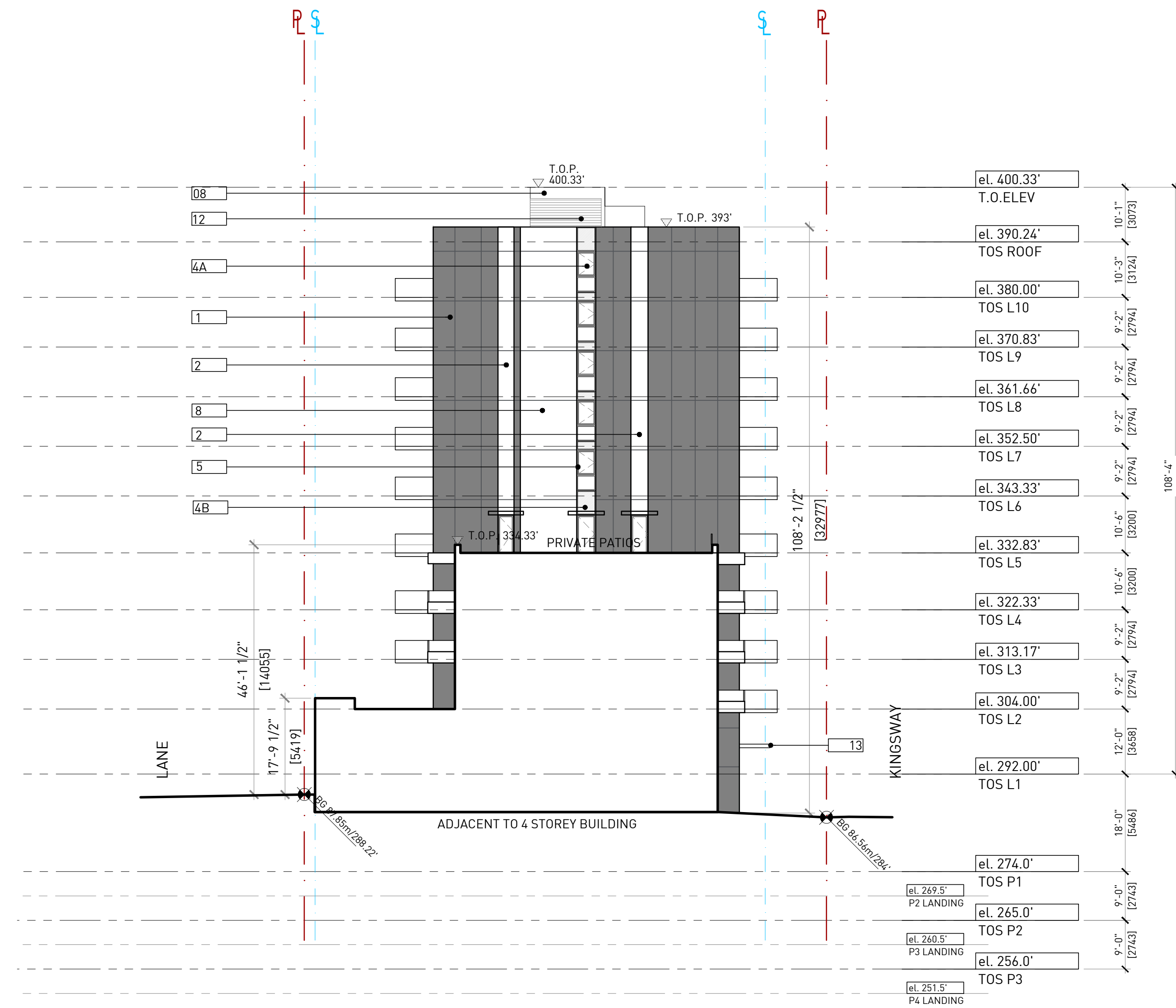
PLOT INFO:

NOT FOR CONSTRUCTION

NOTES

NO DESCRIPTION

EXTERIOR MATERIALS		
TYPE	NAME	DESCRIPTION
1	INSULATED METAL PANEL	COLOUR TBL BLACK
2	INSULATED METAL PANEL	COLOUR BONE WHITE
3	BRICK	BRICK (MOTTLED PATTERN). COLOUR: 10% DOWNING BLACK VELOUR 30% ALSAKA WHITE VELOUR 60% ENGLISH GRAY VELOUR
4A	WINDOW WALL	CLEAR GLAZING
4B	SPANDREL/BYPASS PANEL	BACK PAINTED DOUBLE GLAZED. COLOUR BONE WHITE
4C	WINDOW WALL	FROSTED GLAZING
5	WINDOW-WALL FRAMING	TO MATCH BONE WHITE
5A	WINDOW-WALL FRAMING	COLOUR BLACK ANODIZED ALUMINUM
6	STOREFRONT WITH CLEAR GLASS	CLEAR ANODIZED FRAMING
7	ANODIZED ALUMINUM - LOUVERS	CLEAR ANODIZED ALUMINUM
8	C.I.P. PAINTED CONCRETE	COLOUR BENJAMIN MOORE STORMY MONDAY 2112-50
8A	C.I.P. PAINTED CONCRETE	MULTI-COLOUR VERTICAL BANDS - FINAL COLOURS TBD
8B	C.I.P. PAINTED CONCRETE	COLOUR BENJAMIN MOORE MIDSUMMER NIGHT 2134-20
8C	C.I.P. PAINTED CONCRETE	COLOUR TO MATCH WITH MATERIAL 1 (TBL BLACK)
9	CLEAR GLASS GUARD WITH PRE-FINISHED ALUMINUM FRAMING	PRE-FINISHED ALUMINUM GUARDS. FRAMING COLOUR BONE WHITE
9A	BYPASS GUARDRAILS WITH PRE-FINISHED ALUMINUM FRAMING	50: VISION GLASS - 50% WHITE METAL PANEL (COLOUR BONE WHITE)
10	POWDER-COATED METALAWNING STYLE CANOPY	COLOUR TO MATCH WITH MATERIAL 1 (TBL BLACK)
11	METAL PULL-UP GATE	CLEAR ANODIZED ALUMINUM
12	POWDER COATED METAL SCREEN	COLOUR BONE WHITE
13	POWDER COATED METAL CANOPY C/W TEMPERED TRANSLUCENT GLASS	COLOUR BONE WHITE
14	POWDER COATED ALUMINUM FASCIA PANEL	COLOUR BONE WHITE
15	ALUMINUM BATTENS	POWDER COATED COLOUR BEIGE
16	INSULATED CEMENT PANEL	COLOUR - RAW CONCRETE



REVISIONS

NO.	DATE	REMARKS
1	2019-06-20	ISSUED FOR REZONING
2	2021-05-31	50% DP REVIEW
3	2021-06-23	UNITS REVIEW
4	2021-07-20	DP PRE-APP REVIEW
5	2021-08-03	ISSUED FOR DP SUBMISSION
6	2021-10-20	25% IFT COORDINATION SET
7	2021-12-15	PRICING SET
8	2022-04-21	ISSUED FOR DP PRIOR-TO RESPONSE



5189 EARLS ST /
 2727 KINGSWAY
 VANCOUVER, BC
 COROMANDEL PROPERTIES
 MIXED-USE DEVELOPMENT

WEST ELEVATION

DATE -
 DRAWN BY AK
 CHECKED BY -
 SCALE 1/16"=1'-0"
 JOB NUMBER 18058

A4.06

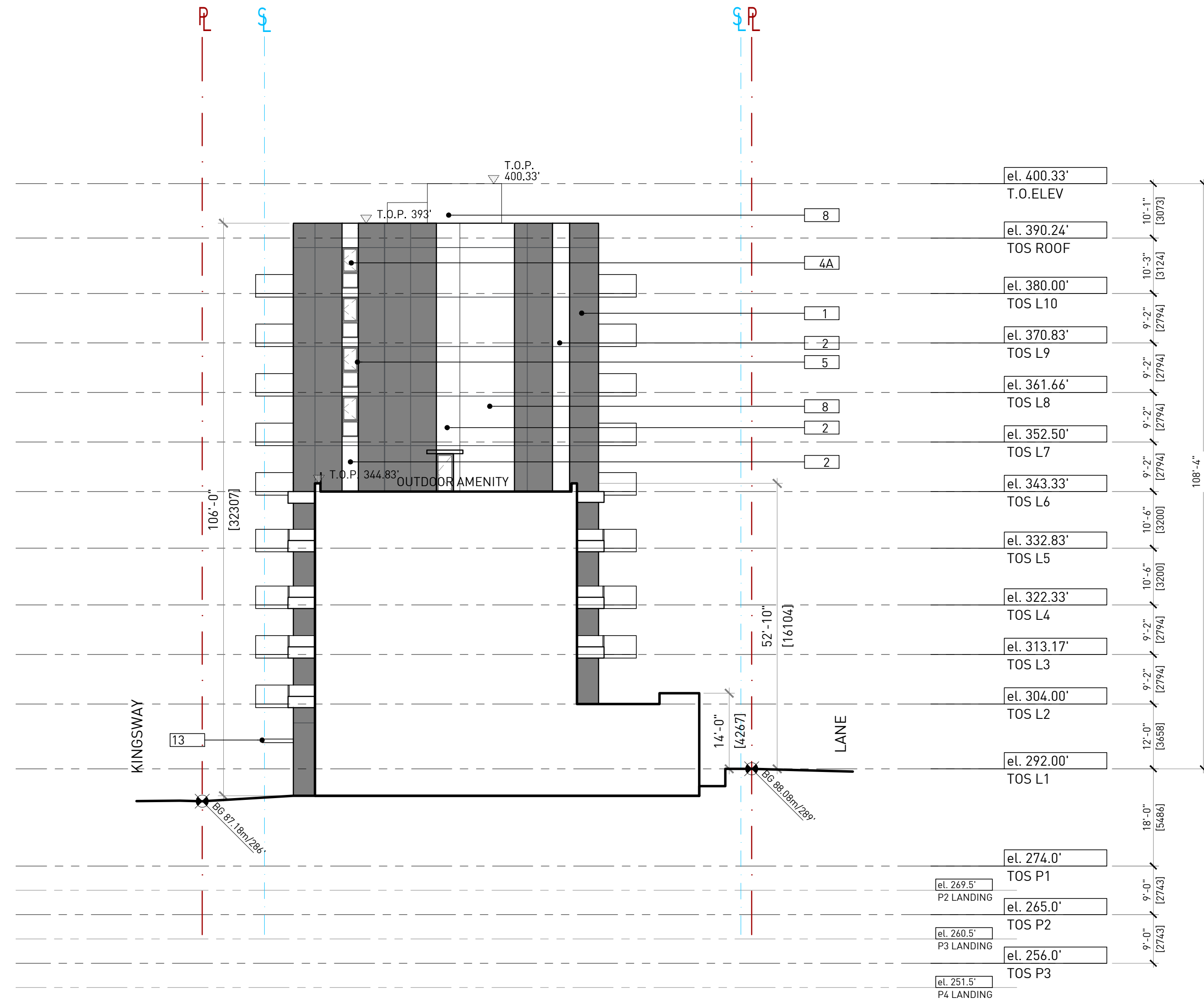
EXTERIOR MATERIALS		
TYPE	NAME	DESCRIPTION
1	INSULATED METAL PANEL	COLOUR TBL BLACK
2	INSULATED METAL PANEL	COLOUR BONE WHITE
3	BRICK	BRICK (MOTTLED PATTERN). COLOUR: 10% DOWNING BLACK VELOUR 30% ALSAKA WHITE VELOUR 60% ENGLISH GRAY VELOUR
4A	WINDOW WALL	CLEAR GLAZING
4B	SPANDREL/BYPASS PANEL	BACK PAINTED DOUBLE GLAZED. COLOUR BONE WHITE
4C	WINDOW WALL	FROSTED GLAZING
5	WINDOW-WALL FRAMING	TO MATCH BONE WHITE
5A	WINDOW-WALL FRAMING	COLOUR BLACK ANODIZED ALUMINUM
6	STOREFRONT WITH CLEAR GLASS	CLEAR ANODIZED FRAMING
7	ANODIZED ALUMINUM - LOUVERS	CLEAR ANODIZED ALUMINUM
8	C.I.P. PAINTED CONCRETE	COLOUR BENJAMIN MOORE STORMY MONDAY 2112-50
8A	C.I.P. PAINTED CONCRETE	MULTI-COLOUR VERTICAL BANDS - FINAL COLOURS TBD
8B	C.I.P. PAINTED CONCRETE	COLOUR BENJAMIN MOORE MIDSUMMER NIGHT 2134-20
8C	C.I.P. PAINTED CONCRETE	COLOUR TO MATCH WITH MATERIAL 1 (TBL BLACK)
9	CLEAR GLASS GUARD WITH PRE-FINISHED ALUMINUM FRAMING	PRE-FINISHED ALUMINUM GUARDS. FRAMING COLOUR BONE WHITE
9A	BYPASS GUARDRAILS WITH PRE-FINISHED ALUMINUM FRAMING	50: VISION GLASS - 50% WHITE METAL PANEL (COLOUR BONE WHITE)
10	POWDER-COATED METALAWNING STYLE CANOPY	COLOUR TO MATCH WITH MATERIAL 1 (TBL BLACK)
11	METAL PULL-UP GATE	CLEAR ANODIZED ALUMINUM
12	POWDER COATED METAL SCREEN	COLOUR BONE WHITE
13	POWDER COATED METAL CANOPY C/W TEMPERED TRANSLUCENT GLASS	COLOUR BONE WHITE
14	POWDER COATED ALUMINUM FASCIA PANEL	COLOUR BONE WHITE
15	ALUMINUM BATTENS	POWDER COATED COLOUR BEIGE
16	INSULATED CEMENT PANEL	COLOUR - RAW CONCRETE



GBL ARCHITECTS
300 - 724 WEST 8TH AVENUE
VANCOUVER, CANADA V6Y 1N6
T 604.736.1156 F 604.731.5279
GBLARCHITECTS.COM

NOT FOR CONSTRUCTION

NOTES
NO DESCRIPTION



NO.	DATE	REMARKS
1	2019-06-20	ISSUED FOR REZONING
2	2021-05-31	50% DP REVIEW
3	2021-06-23	UNITS REVIEW
4	2021-07-20	DP PRE-APP REVIEW
5	2021-08-03	ISSUED FOR DP SUBMISSION
6	2021-10-20	25% IFT COORDINATION SET
7	2021-12-15	PRICING SET
8	2022-04-21	ISSUED FOR DP PRIOR-TO RESPONSE



5189 EARLS ST /
2727 KINGSWAY
VANCOUVER, BC
COROMANDEL PROPERTIES
MIXED-USE DEVELOPMENT

WEST TOWER
EAST ELEVATION

DATE -
DRAWN BY TCL
CHECKED BY -
SCALE 1/16"=1'-0"
JOB NUMBER 18058

A4.07