

A.10

MOTION

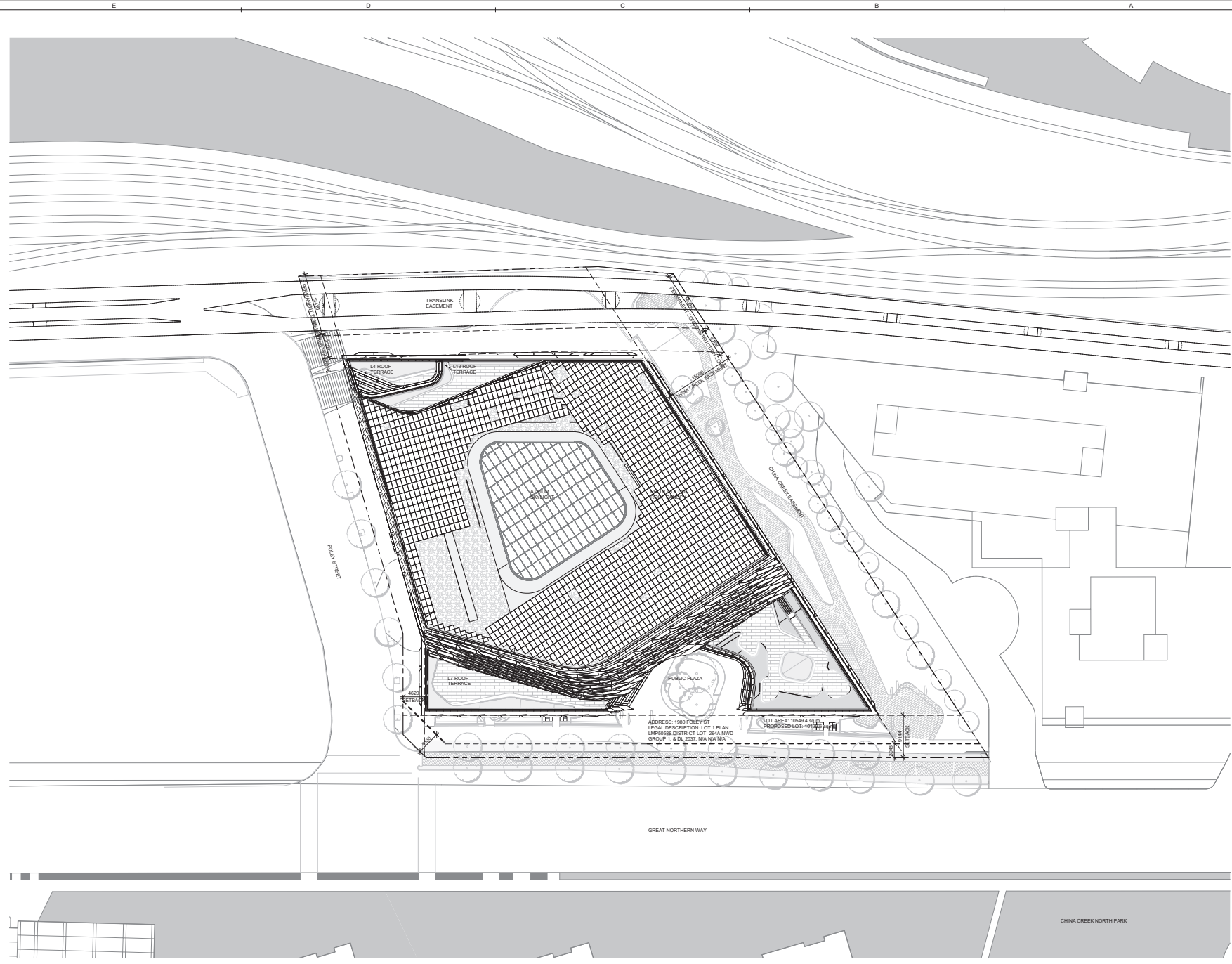
10. Approval of Form of Development – 1980 Foley Street

THAT the form of development for this portion of the site known as 1980 Foley Street be approved generally as illustrated in the Development Application Number DP-2020-00185, prepared by Francl Architecture and submitted electronically on May 5, 2022, provided that the Director of Planning may impose conditions and approve design changes which would not adversely affect either the development character of the site or adjacent properties.

* * * * *

Additional Background Information:

<https://rezoning.vancouver.ca/applications/1980foley/index.htm>



PRELIMINARY NOT FOR CONSTRUCTION



OWNER:
LULULEMON ATHLETICA INC.
 1818 Cornwall Avenue
 Vancouver, BC
 Canada V6J 1C7
 T: 604.732.6124
 www.lululemon.com

DESIGN ARCHITECT:
mOrphosis
 3441 Wesley Street
 Culver City, CA 90232
 T: 424.298.8200
 www.morphosis.net

WORKPLACE ARCHITECT:

CLIVE WILKINSON ARCHITECTS
 6116 Washington Boulevard
 Culver City, California 90230
 +1 310 356 2200 www.clivewilkinson.com

LOCAL ARCHITECT:

FRANCI ARCHITECTURE
 870 Homer Street
 Vancouver, BC, V6B 2W7, Canada
 T: 604.688.3252
 https://franciarchitecture.com

- CONSULTANTS:**
- PROJECT MANAGERS:** COLLIER'S PROJECT LEADERS
 - CIVIL ENGINEERS:** JEN & MARTIN
 - LANDSCAPE ARCHITECTS:** PFS STUDIO
 - STRUCTURAL ENGINEERS:** FAST + EPP
 - MECHANICAL ENGINEERS:** INTEGRAL GROUP
 - ELECTRICAL ENGINEERS:** INTEGRAL GROUP
 - WELLNESS / SUSTAINABILITY:** INTEGRAL GROUP
 - WORKPLACE PSYCHOLOGY:** PLASTARC
 - LIGHTING DESIGNERS:** OFFICE FOR VISUAL INTERACTION
 - ACOUSTICAL ENGINEERS:** BKL CONSULTANTS
 - VERTICAL TRANSPORTATION:** GLNN CONSULTANTS
 - BUILDING SCIENCE:** MORRISON HERDFIELD
 - BUILDING CODES & LIFE SAFETY:** GHL CONSULTANTS
 - FOOD SERVICE:** VESIS
 - FAÇADE CONSULTANTS:** THORNTON TOMASETTI
 - WORKPLACE PSYCHOLOGIST:** PLASTARC
 - FURNITURE CONSULTANT:** PAIR

ISSUES / REVISIONS

DATE	SYMBOL	DESCRIPTION
03.09.2020		DP SUBMISSION
09.30.2020		DP PRIOR TO SUBMISSION DRAFT
10.15.2020		DP PRIOR TO SUBMISSION
04.29.2022		DP PRIOR TO SUBMISSION



PROJECT:
LULULEMON STORE SUPPORT CENTER
 1800 FOLEY STREET
 VANCOUVER, BC V6T, CANADA

SITE MASTER PLAN - ROOF

DATE: 12/04/19
 PROJECT NO: 18033
 DRAWING BY:
 CHK BY:
 DRAWING NO:
A0.011-DP

A1 SITE PLAN - ROOF
 SCALE: 1 : 300



OWNER:
LULULEMON ATHLETICA INC.
 1818 Commercial Avenue
 Vancouver, BC
 Canada V6J 1C7
 T: 604.732.6124
 www.lululemon.com

DESIGN ARCHITECT:
mOrphosis
 3440 Wesley Street
 Culver City, CA 90232
 T: 424.298.8200
 www.morphosis.net

WORKPLACE ARCHITECT:

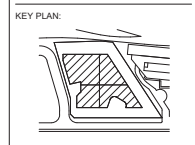
CLIVE WILKINSON ARCHITECTS
 6116 Washington Boulevard
 Vancouver, BC, V6B 2W7, Canada
 +1 310 356 2250 www.clivewilkinson.com

LOCAL ARCHITECT:

FRANCL ARCHITECTURE
 970 Homer Street
 Vancouver, BC, V6B 2W7, Canada
 T: 604.688.3252
 https://franciscanarchitecture.com

CONSULTANTS:
PROJECT MANAGERS:
 COLLIERB PROJECT LEADERS
CIVIL ENGINEERS:
 ARJIN & MARTIN
LANDSCAPE ARCHITECTS:
 PFS STUDIO
STRUCTURAL ENGINEERS:
 FAST + EPP
MECHANICAL ENGINEERS:
 INTEGRAL GROUP
ELECTRICAL ENGINEERS:
 INTEGRAL GROUP
WELLNESS / SUSTAINABILITY:
 INTEGRAL GROUP
WORKPLACE PSYCHOLOGY:
 PLASTARC
LIGHTING DESIGNERS:
 OFFICE FOR VISUAL INTERACTION
ACOUSTICAL ENGINEERS:
 BKL CONSULTANTS
VERTICAL TRANSPORTATION:
 MICRORISE WORKFIELD
BUILDING SCIENCE:
 MICRORISE WORKFIELD
BUILDING CODES & LIFE SAFETY:
 GHL CONSULTANTS
FOOD SERVICE:
 VEBS
FAÇADE CONSULTANTS:
 THORNTON TOMASETTI
WORKPLACE PSYCHOLOGISTS:
 PLASTARC
FURNITURE CONSULTANT:
 PAIR

ISSUES / REVISIONS		
DATE	SYMBOL	DESCRIPTION
03.09.2020		DP SUBMISSION
09.30.2020		DP PRIOR TO SUBMISSION DRAFT
10.15.2020		DP PRIOR TO SUBMISSION
04.29.2022		DP PRIOR TO SUBMISSION

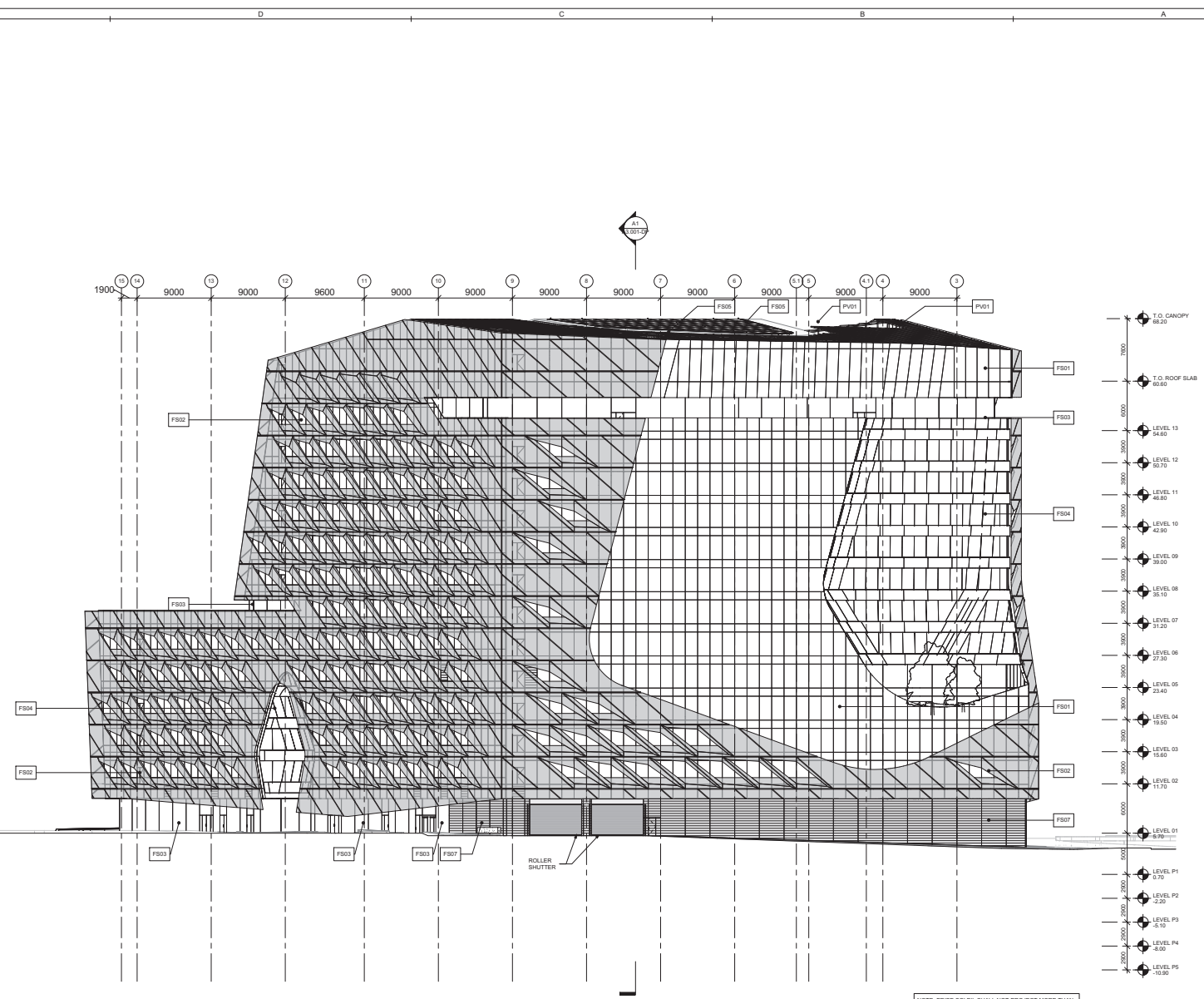


PROJECT:
LULULEMON STORE SUPPORT CENTER
 1888 FOLEY STREET
 VANCOUVER, BC V6T, CANADA

BUILDING ELEVATION - NORTH

DATE:	12/05/19
PROJECT NO.:	38033
DRAWING BY:	
CHK BY:	
DRAWING NO.:	A2.000-DP

PRELIMINARY NOT FOR CONSTRUCTION

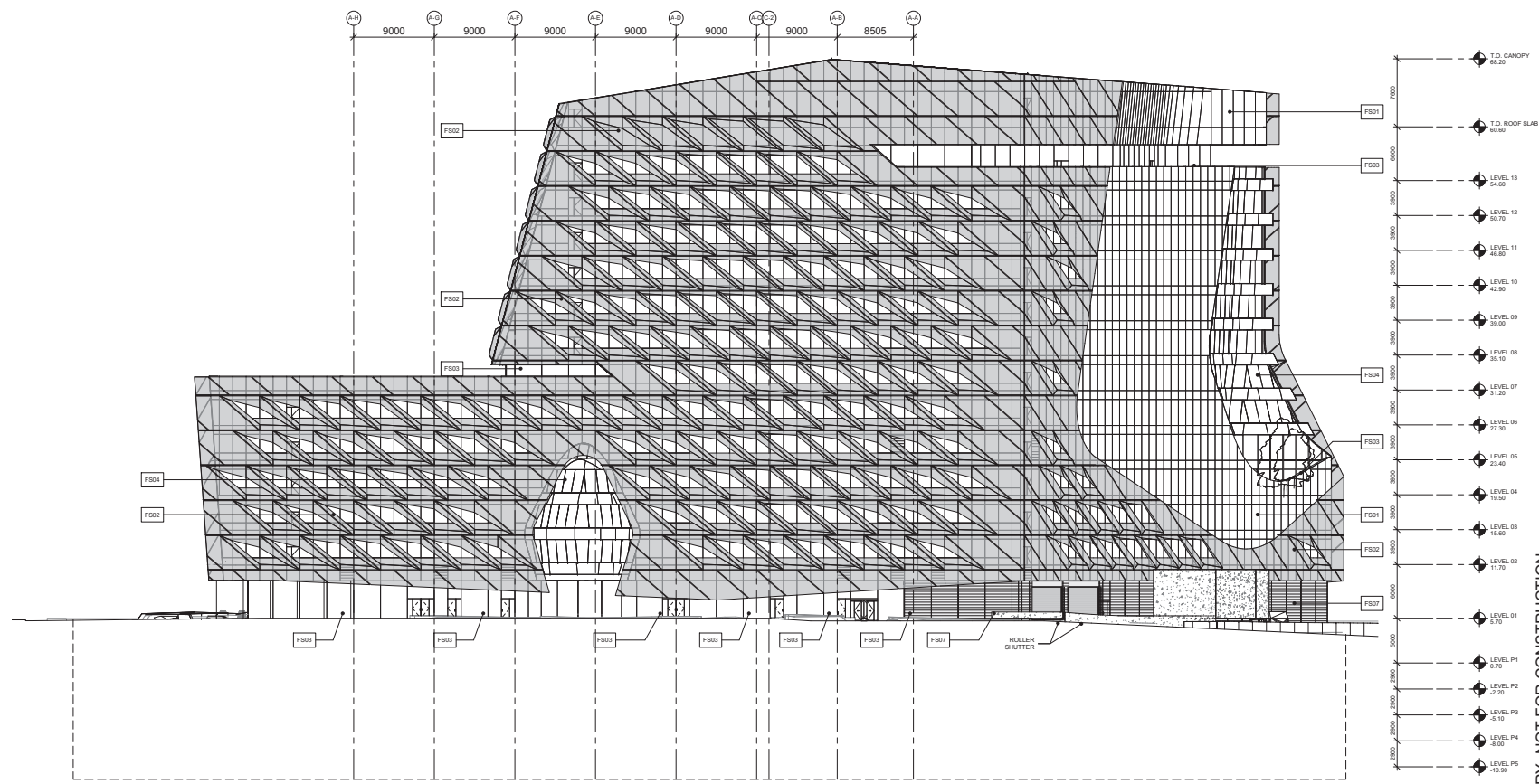


A1 BUILDING ELEVATION - NORTH
 SCALE: 1 : 200

FACADE SYSTEMS LEGEND

FS01	GLAZED UNITIZED ALUMINUM CURTAIN WALL ASSEMBLY WITH EXTERIOR FABRIC MESH BRISE SOCLE
FS02	GLAZED UNITIZED ALUMINUM CURTAIN WALL ASSEMBLY WITH EXTERIOR FABRIC MESH BRISE SOCLE
FS03	ALUMINUM STOREFRONT GLAZING SYSTEM
FS04	GLAZED WINDOW WALL ALUMINUM GLAZING SYSTEM WITH GRC / LANDSCAPE PLANTER
FS05	SKYLIGHT GLAZING ROOF ASSEMBLY
FS06	METAL WALL ASSEMBLY
FS07	ARCHITECTURAL LOUVER WALL ASSEMBLY
PV01	PHOTOVOLTAIC ROOF ASSEMBLY

E D C B A



A1 BUILDING ELEVATION - EAST
SCALE: 1 : 200

FACADE SYSTEMS LEGEND

- FS01 GLAZED UNITIZED ALUMINUM CURTAIN WALL ASSEMBLY
- FS02 GLAZED UNITIZED ALUMINUM CURTAIN WALL ASSEMBLY WITH EXTERIOR FABRIC MESH BRISE SOLEL
- FS03 ALUMINUM STOREFRONT GLAZING SYSTEM
- FS04 GLAZED WINDOW WALL ALUMINUM GLAZING SYSTEM WITH GRC / LANDSCAPE PLANTER
- FS05 SKYLIGHT GLAZING ROOF ASSEMBLY
- FS06 METAL WALL ASSEMBLY
- FS07 ARCHITECTURAL LOUVER WALL ASSEMBLY
- PV01 PHOTOVOLTAIC ROOF ASSEMBLY

PRELIMINARY NOT FOR CONSTRUCTION



OWNER:
LULULEMON ATHLETICA INC.
1818 Cornwall Avenue
Vancouver, BC
Canada V6J 1C9
T: 604.732.6134
www.lululemon.com

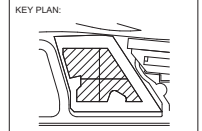
DESIGN ARCHITECT:
mOrphosis
3440 Wesley Street
Culver City, CA 90232
T: 424.298.8200
www.morphosis.net

WORKPLACE ARCHITECT:
CLIVE WILKINSON ARCHITECTS
6116 Washington Boulevard
Culver City, California 90230
+1 310 356 2250 www.clivewilkinson.com

LOCAL ARCHITECT:
FRANCL ARCHITECTURE
270 Homer Street
Vancouver, BC, V6B 2W7, Canada
T: 604.686.3252
https://franclexarchitects.com

- CONSULTANTS:**
- PROJECT MANAGERS:** COLLIERB PROJECT LEADERS
 - CIVIL ENGINEERS:** ARJIN & MARTIN
 - LANDSCAPE ARCHITECTS:** FAST + EPP
 - STRUCTURAL ENGINEERS:** INTEGRAL GROUP
 - MECHANICAL ENGINEERS:** INTEGRAL GROUP
 - WELLNESS / SUSTAINABILITY:** INTEGRAL GROUP
 - WORKPLACE PSYCHOLOGY:** PLASTARC
 - LIGHTING DESIGNERS:** OFFICE FOR VISUAL INTERACTION
 - ACOUSTICAL ENGINEERS:** BRL CONSULTANTS
 - VERTICAL TRANSPORTATION:** GLENN CONSULTANTS
 - BUILDING SCIENCE:** MCRISON WERKFIELD
 - BUILDING CODES & LIFE SAFETY:** GHL CONSULTANTS
 - FOOD SERVICE:** VESIS
 - FACADE CONSULTANTS:** THORNTON TOMASETTI
 - WORKPLACE PSYCHOLOGIST:** PLASTARC
 - FURNITURE CONSULTANT:** PAIR

ISSUES / REVISIONS		
DATE	SYMBOL	DESCRIPTION
03.09.2020		DP SUBMISSION
09.30.2020		DP PRIOR TO SUBMISSION DRAFT
10.15.2020		DP PRIOR TO SUBMISSION
04.29.2022		DP PRIOR TO SUBMISSION



PROJECT:
LULULEMON STORE SUPPORT CENTER
1888 FOLEY STREET
VANCOUVER, BC V6T, CANADA

BUILDING ELEVATION - EAST

DATE:	12/05/19
PROJECT NO.:	38033
DRAWING BY:	
CHK BY:	
DRAWING NO.:	A2.001-DP



OWNER:
**LULULEMON
 ATHLETICA INC.**
 1818 Cornwall Avenue
 Vancouver, BC
 Canada V6J 1C7
 T: 604.732.6134
 www.lululemon.com

DESIGN ARCHITECT:
mOrphosis
 3440 Wesley Street
 Culver City, CA 90232
 T: 424.298.8200
 www.morphosis.net

WORKPLACE ARCHITECT:

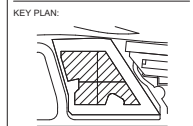
CLIVE WILKINSON ARCHITECTS
 6116 Washington Boulevard
 Culver City, California 90232
 +1 310 356 2200 www.clivewilkinson.com

LOCAL ARCHITECT:

**FRANCL
 ARCHITECTURE**
 970 Homer Street
 Vancouver, BC, V6B 2W7, Canada
 T: 604.688.3252
 https://francclarchitecture.com

- CONSULTANTS:
- PROJECT MANAGERS:**
COLLIER'S PROJECT LEADERS
 - CIVIL ENGINEERS:**
JEN & MARTIN
 - LANDSCAPE ARCHITECTS:**
PFS STUDIO
 - STRUCTURAL ENGINEERS:**
FAST + EPP
 - MECHANICAL ENGINEERS:**
INTEGRAL GROUP
 - ELECTRICAL ENGINEERS:**
INTEGRAL GROUP
 - WELLNESS / SUSTAINABILITY:**
INTEGRAL GROUP
 - WORKPLACE PSYCHOLOGY:**
PLASTIC
 - LIGHTING DESIGNERS:**
OFFICE FOR VISUAL INTERACTION
 - ACOUSTICAL ENGINEERS:**
IBL CONSULTANTS
 - VERTICAL TRANSPORTATION:**
GLINN CONSULTANTS
 - BUILDING SCIENCE:**
MORRISON HERDFIELD
 - BUILDING CODES & LIFE SAFETY:**
GHL CONSULTANTS
 - FOOD SERVICE:**
VEBS
 - FAÇADE CONSULTANTS:**
THORNTON TOMASETTI
 - WORKPLACE PSYCHOLOGY:**
PLASTIC
 - FURNITURE CONSULTANT:**
PAIR

ISSUES / REVISIONS		
DATE	SYMBOL	DESCRIPTION
03.09.2020		DP SUBMISSION
09.30.2020		DP PRIOR TO SUBMISSION DRAFT
10.15.2020		DP PRIOR TO SUBMISSION
04.29.2022		DP PRIOR TO SUBMISSION

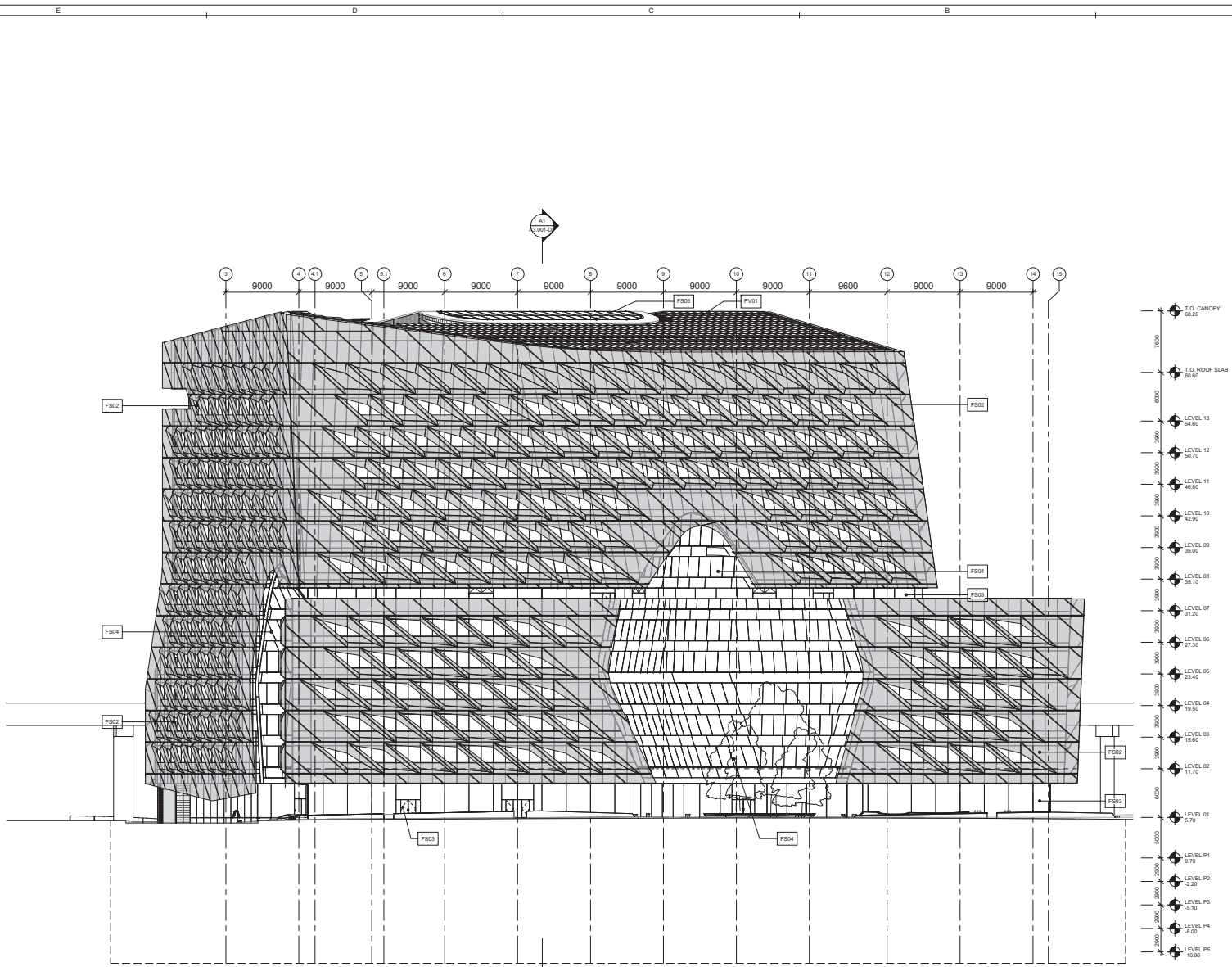


PROJECT:
**LULULEMON STORE
 SUPPORT CENTER**
 1888 FOLEY STREET
 VANCOUVER, BC V6T, CANADA

BUILDING ELEVATION - SOUTH

DATE:	12/05/19
PROJECT NO.:	38033
DRAWING BY:	
CHK BY:	
DRAWING NO.:	A2.002-DP

PRELIMINARY NOT FOR CONSTRUCTION

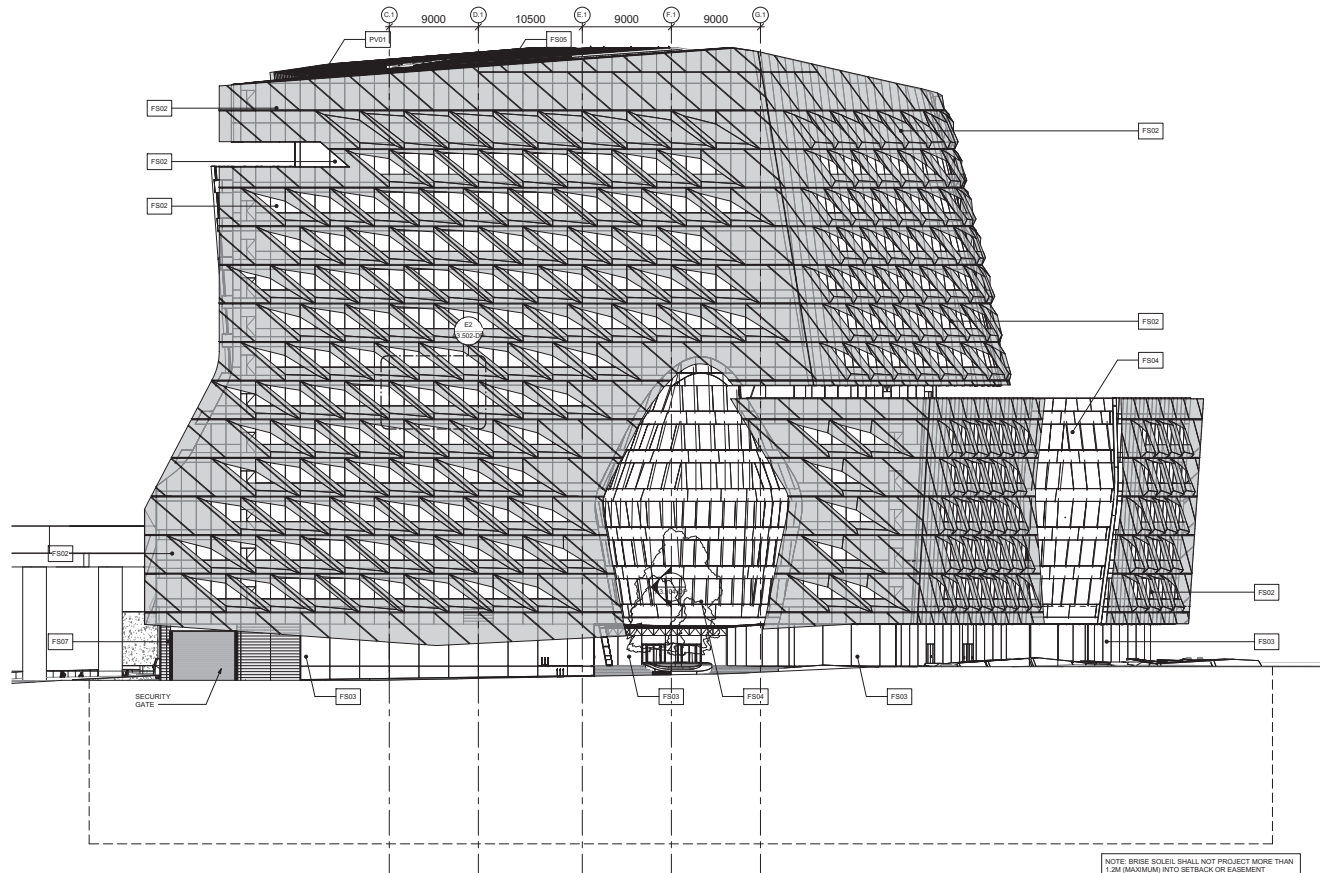


NOTE: BRISE SOLELS SHALL NOT PROJECT MORE THAN 1.2M (MAXIMUM) INTO SETBACK OR EASEMENT

A1 BUILDING ELEVATION - SOUTH
 SCALE: 1 : 200

FACADE SYSTEMS LEGEND

- FS01** GLAZED UNITIZED ALUMINUM CURTAIN WALL ASSEMBLY WITH EXTERIOR FABRIC MESH BRISE SOCLE
- FS02** GLAZED UNITIZED ALUMINUM CURTAIN WALL ASSEMBLY WITH EXTERIOR FABRIC MESH BRISE SOCLE
- FS03** ALUMINUM STOREFRONT GLAZING SYSTEM
- FS04** GLAZED WINDOW WALL ALUMINUM GLAZING SYSTEM WITH GPIC / LANDSCAPE PLANTER
- FS05** SKYLIGHT GLAZING ROOF ASSEMBLY
- FS06** METAL WALL ASSEMBLY
- FS07** ARCHITECTURAL LOUVER WALL ASSEMBLY
- PV01** PHOTOVOLTAIC ROOF ASSEMBLY



A1 BUILDING ELEVATION - WEST
SCALE: 1 : 200

FACADE SYSTEMS LEGEND

- FS01 GLAZED UNITIZED ALUMINUM CURTAIN WALL ASSEMBLY
- FS02 GLAZED UNITIZED ALUMINUM CURTAIN WALL ASSEMBLY WITH EXTERIOR FABRIC MESH BRISE SOLEIL
- FS03 ALUMINUM STOREFRONT GLAZING SYSTEM
- FS04 GLAZED WINDOW WALL ALUMINUM GLAZING SYSTEM WITH GPIC / LANDSCAPE PLANTER
- FS05 SKYLIGHT GLAZING ROOF ASSEMBLY
- FS06 METAL WALL ASSEMBLY
- FS07 ARCHITECTURAL LOUVER WALL ASSEMBLY
- PV01 PHOTOVOLTAIC ROOF ASSEMBLY

PRELIMINARY NOT FOR CONSTRUCTION



OWNER:
LULULEMON ATHLETICA INC.
1818 Cornwall Avenue
Vancouver, BC
Canada V6J 1C7
T: 604.752.6124
www.lululemon.com

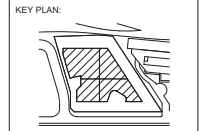
DESIGN ARCHITECT:
mOrphosis
3440 Wesley Street
Oakway City, CA 90232
T: 424.298.8200
www.morphosis.net

WORKPLACE ARCHITECT:
CLIVE WILKINSON ARCHITECTS
6116 Washington Boulevard
Oakway City, California 90232
+1 310 356 2200 www.clivewilkinson.com

LOCAL ARCHITECT:
FRANCL ARCHITECTURE
270 Homer Street
Vancouver, BC, V6B 2W7, Canada
T: 604.688.3252
https://franclarchitecture.com

- CONSULTANTS:**
- PROJECT MANAGERS:** COLLIER'S PROJECT LEADERS
 - CIVIL ENGINEERS:** JENIN & MARTIN
 - LANDSCAPE ARCHITECTS:** PFS STUDIO
 - STRUCTURAL ENGINEERS:** FAST + EPP
 - MECHANICAL ENGINEERS:** INTEGRAL GROUP
 - ELECTRICAL ENGINEERS:** INTEGRAL GROUP
 - WELLNESS / SUSTAINABILITY:** INTEGRAL GROUP
 - WORKPLACE PSYCHOLOGY:** PLASTARC
 - LIGHTING DESIGNERS:** OFFICE FOR URBAN INTERACTION
 - ACOUSTICAL ENGINEERS:** IRL CONSULTANTS
 - VERTICAL TRANSPORTATION:** GLENN CONSULTANTS
 - BUILDING SCIENCE:** MORRISON HERDFIELD
 - BUILDING CODES & LIFE SAFETY:** GHL CONSULTANTS
 - FOOD SERVICE:** VESIS
 - FACADE CONSULTANTS:** THORNTON TOMASETTI
 - WORKPLACE PSYCHOLOGISTS:** PLASTARC
 - FURNITURE CONSULTANT:** PAIR

ISSUES / REVISIONS		
DATE	SYMBOL	DESCRIPTION
03.09.2020		DP SUBMISSION
09.30.2020		DP PRIOR TO SUBMISSION DRAFT
10.15.2020		DP PRIOR TO SUBMISSION
04.29.2022		DP PRIOR TO SUBMISSION



PROJECT:
LULULEMON STORE SUPPORT CENTER
1888 FOLEY STREET
VANCOUVER, BC V6T, CANADA

BUILDING ELEVATION - WEST

DATE:	12/05/19
PROJECT NO:	38033
DRAWING BY:	
CHK BY:	
DRAWING NO:	A2.003-DP