

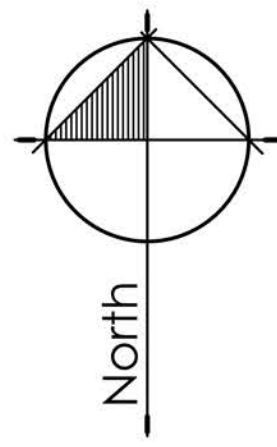
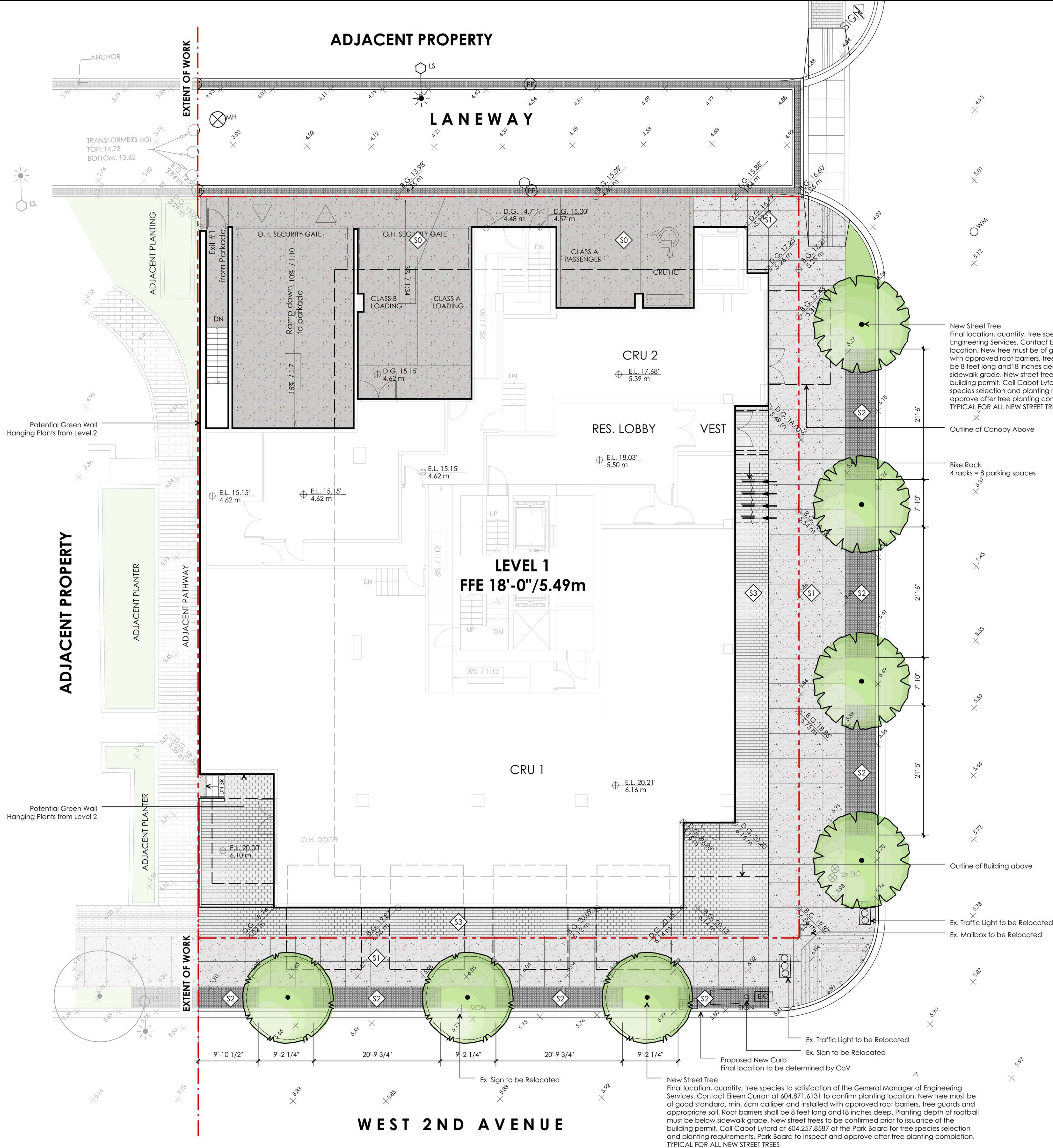
6.0 LANDSCAPE DRAWINGS



DRAWING LIST		
L-1.1	Landscape Plan - Level 1	1/8" = 1'-0"
L-1.2	Landscape Plan - Level 2	1/8" = 1'-0"
L-1.3	Landscape Plan - Level 8 + 9	1/8" = 1'-0"
L-1.4	Landscape Plan - Level 14 + Roof	1/8" = 1'-0"

HARD SURFACE		
Key	Legend	Description
S0		CIP Concrete Paving - Vehicular Area - to Cov Engineering Standard - refer to civil/architectural for detailing
S1		CIP Concrete Paving - Pedestrian only - to Cov Engineering Standard Finish: broomed Colour: natural Pattern: saw cut as shown Min. 4" thickness
S2		Hardy Island Granite Setts Size: 4" x 4" x 3" Finish: flamed Pattern: stacked Supplier: bedrock natural stone
S3		Concrete Unit Paver Size: 8-7/8" x 4-7/16" x 2-3/8" Colour: charcoal Pattern: running bond Supplier: abbotsford concrete
S4		Hydrapressed Slab Paver - Textada Size: 18" X 18" X 1-5/8" Colour: charcoal Pattern: stacked Supplier: abbotsford concrete
S5		Hydrapressed Slab Paver - Textada Size: 18" X 18" X 1-5/8" Colour: natural Pattern: stacked Supplier: abbotsford concrete
S6		Poured-in-place Rubber Surfacing Colour: mixed Supplier: abbotsford concrete

SOFT LANDSCAPE		
Key	Legend	Description
		PLANTING BED Shrub/Perennial/Groundcover
		EVERGREEN HEDGING
		PRE-VEGETATED GREEN ROOF



ONTARIO STREET

01	Nov 16, 2020	Issued for Rezoning
no.:	date:	Item:

Revisions:

Durante Kreuk Ltd.
102 - 1637 West 5th Avenue
Vancouver BC V6J 1N5
t: 604 684 4611
f: 604 684 0677
www.dkl.bc.ca

Project:
5W2
5 West 2nd Avenue
Vancouver, BC

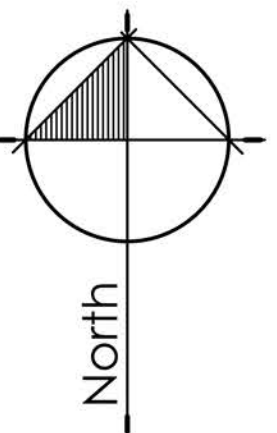
Drawn by: LF
Checked by: PK
Date: 28 Oct, 2020
Scale: 1/8" = 1'-0"

Drawing Title:
Landscape Plan
- Level 1

Project No.:
20059

Sheet No.:
L - 1.1

New Street Tree
Final location, quantity, tree species to satisfaction of the General Manager of Engineering Services. Contact Eileen Curran at 604.871.6131 to confirm planting location. New tree must be of good standard, min. 6cm calliper and installed with approved root barriers, tree guards and appropriate soil. Root barriers shall be 8 feet long and 18 inches deep. Planting depth of rootball must be below sidewalk grade. New street trees to be confirmed prior to issuance of the building permit. Call Cabot Lyford at 604.257.8587 at the Park Board for tree species selection and planting requirements. Park Board to inspect and approve after tree planting completion. TYPICAL FOR ALL NEW STREET TREES



PLANT LIST

Street Tree along Ontario Street
7cm cal., 1.8m ht. Std.
Final tree species, quantity and location to be determined by CoV Park Board

Street Tree along West 2nd Ave
7cm cal., 1.8m ht. Std.
Final tree species, quantity and location to be determined by CoV Park Board

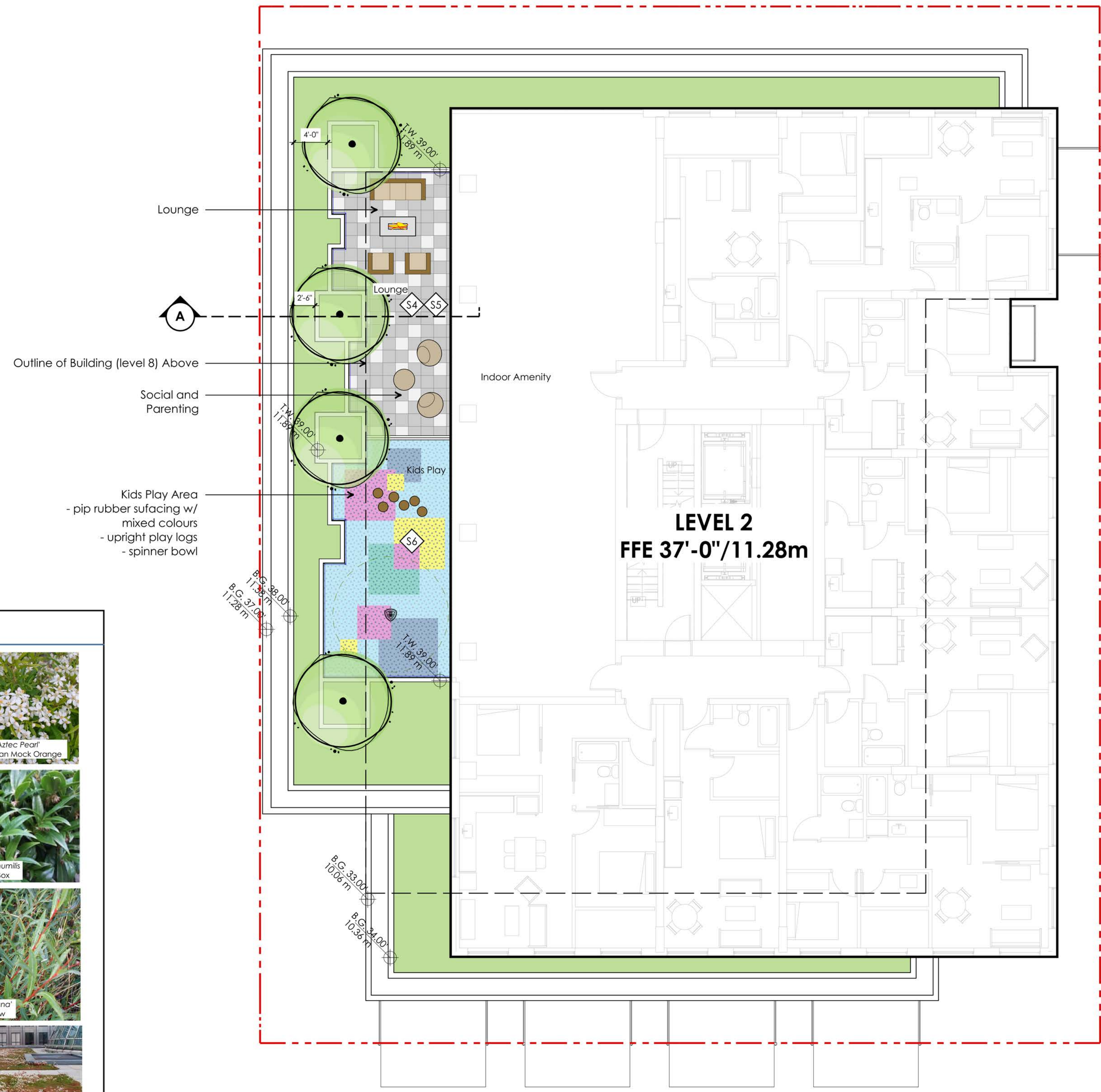
Deciduous Flowering Trees

Shrubs/Groundcovers/Perennials/Ferns

- | | |
|-----------------------------------|----------------------------|
| Azalea japonica | Azalea |
| Azalea 'Gumpo' | Dwarf Azalea |
| Cistus corbariensis | White Rockrose |
| Cornus sericea 'Kelsey' | Dwarf Red-Osier Dogwood |
| Choisya ternata 'Aztec Pearl' (*) | Aztec Pearl Mexican Orange |
| Echinacea purpurea (*) | Purple Coneflower |
| Erica 'December Red' | Winter Heather |
| Lavandula ang. 'Munstead' (*) | English Lavender |
| Liriope muscari | Lily-turf |
| Lonicera pileata | Boxleaf Honeysuckle |
| Nepeta 'Walker's Low' (*) | Walker's Low Catmint |
| Pachysandra f. 'Green Sheen' | Japanese Spurge |
| Polystichum munitum | Western Sword Fern |
| Rhodod. | Rhododendron |
| Rosa J.P. Connell | J.P. Connell Rose |
| Rudbeckia hirta (*) | Black-eyed Susan |
| Sarcococca h. var. 'Humilis' (*) | Sweet Himalayan Box |
| Skimmia japonica 'Rubella' (*) | Rubella Japanese Skimmia |
| Salix purpurea 'Nana' (*) | Dwarf Arctic Willow |
| Sibes sanguineum (*) | Flowering Currant |
| Taxus m. 'Hilli' | Hill's Yew |
| Viburnum davidii (*) | David Viburnum |

Urban Agriculture
Variety of Edible Perennials

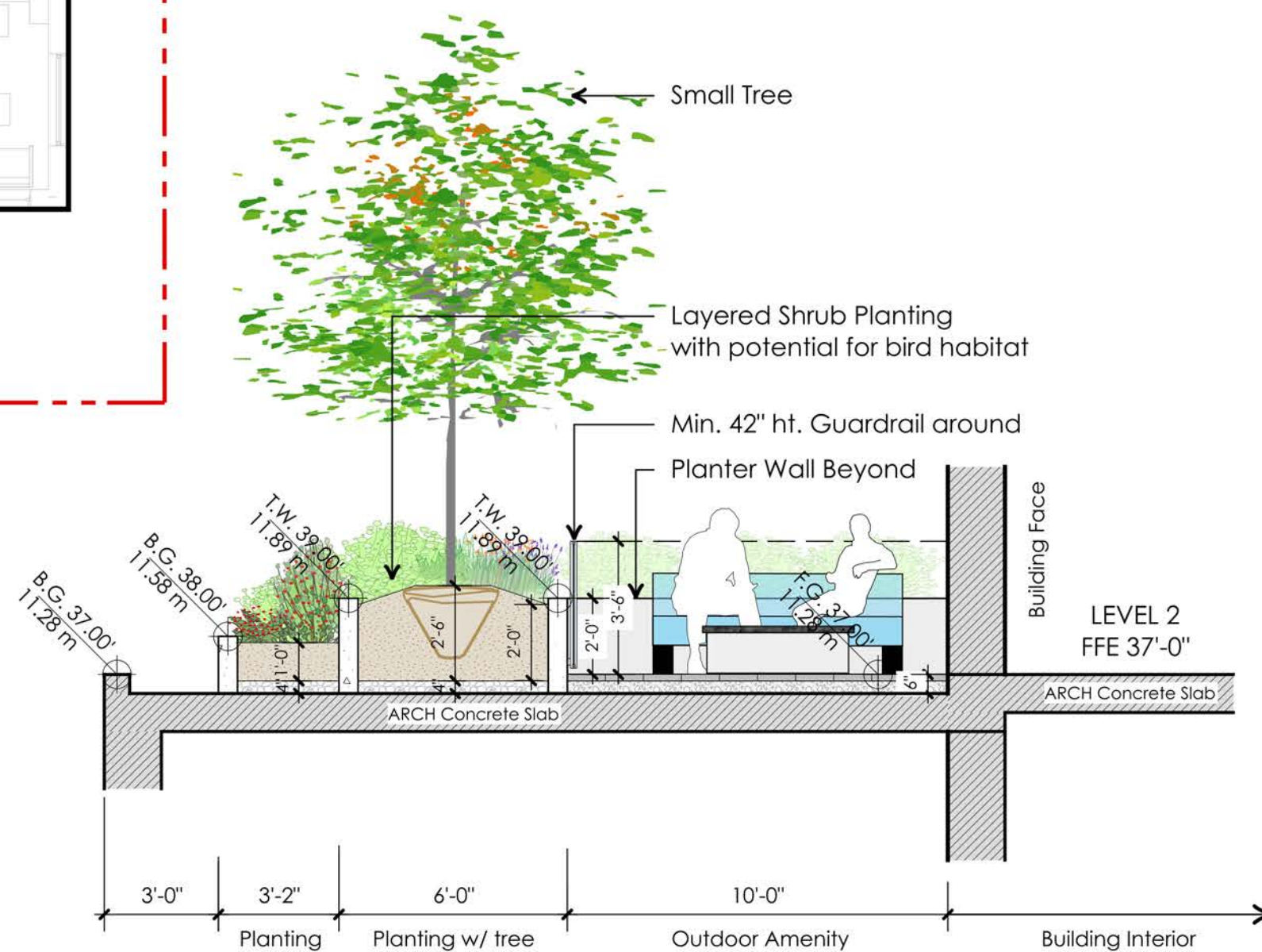
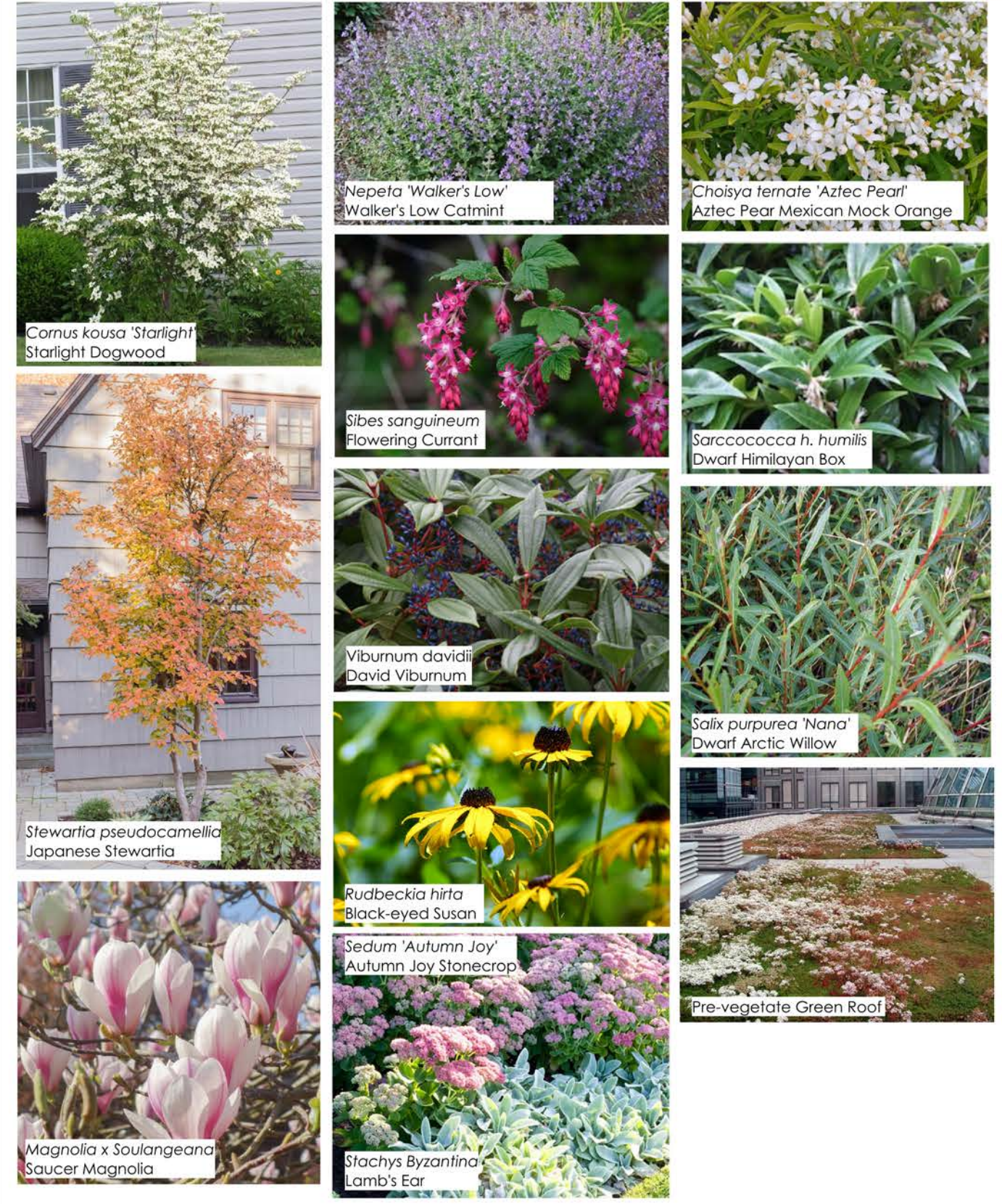
Note:
The asterisk (*) denotes bird, pollinator and insect friendly plant species.



CANOPY BELOW

LEVEL 2
FFE 37'-0"/11.28m

PLANT METRIAL REFERENCE IMAGE



A Section Through Amenity and Planter on Level 2
Scale: 1/4" = 1'-0"

01	Nov 16, 2020	Issued for Rezoning
no.:	date:	Item:



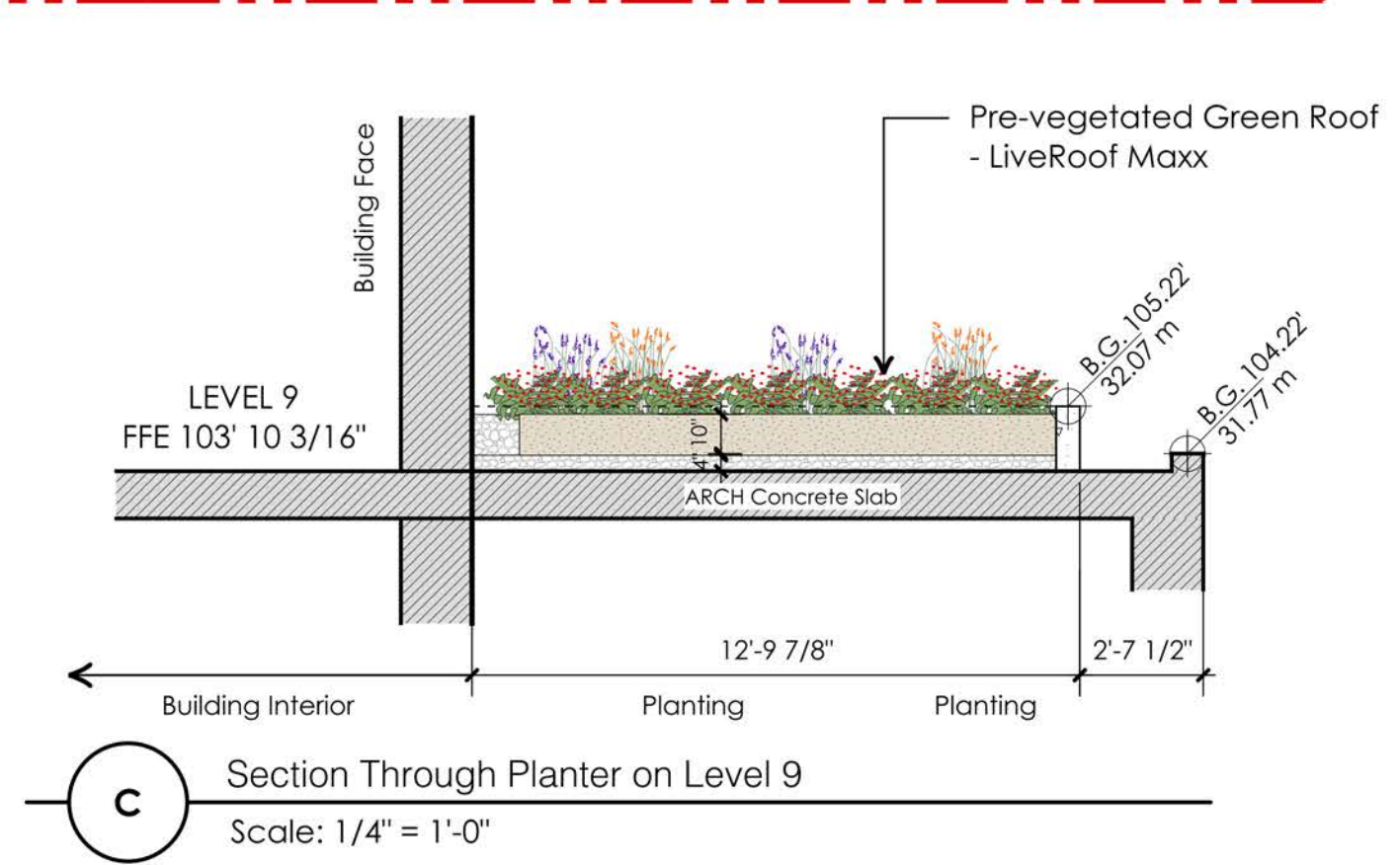
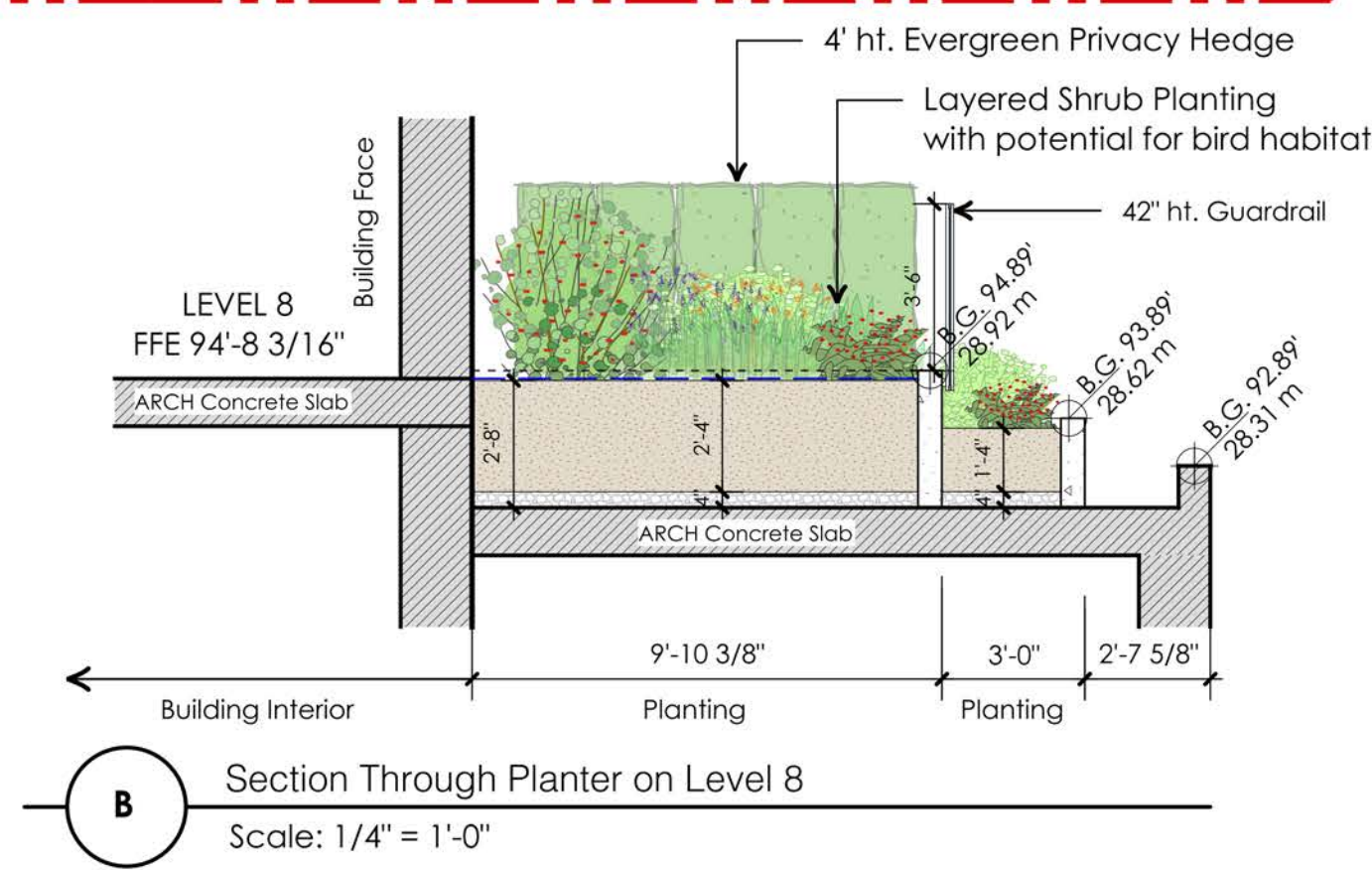
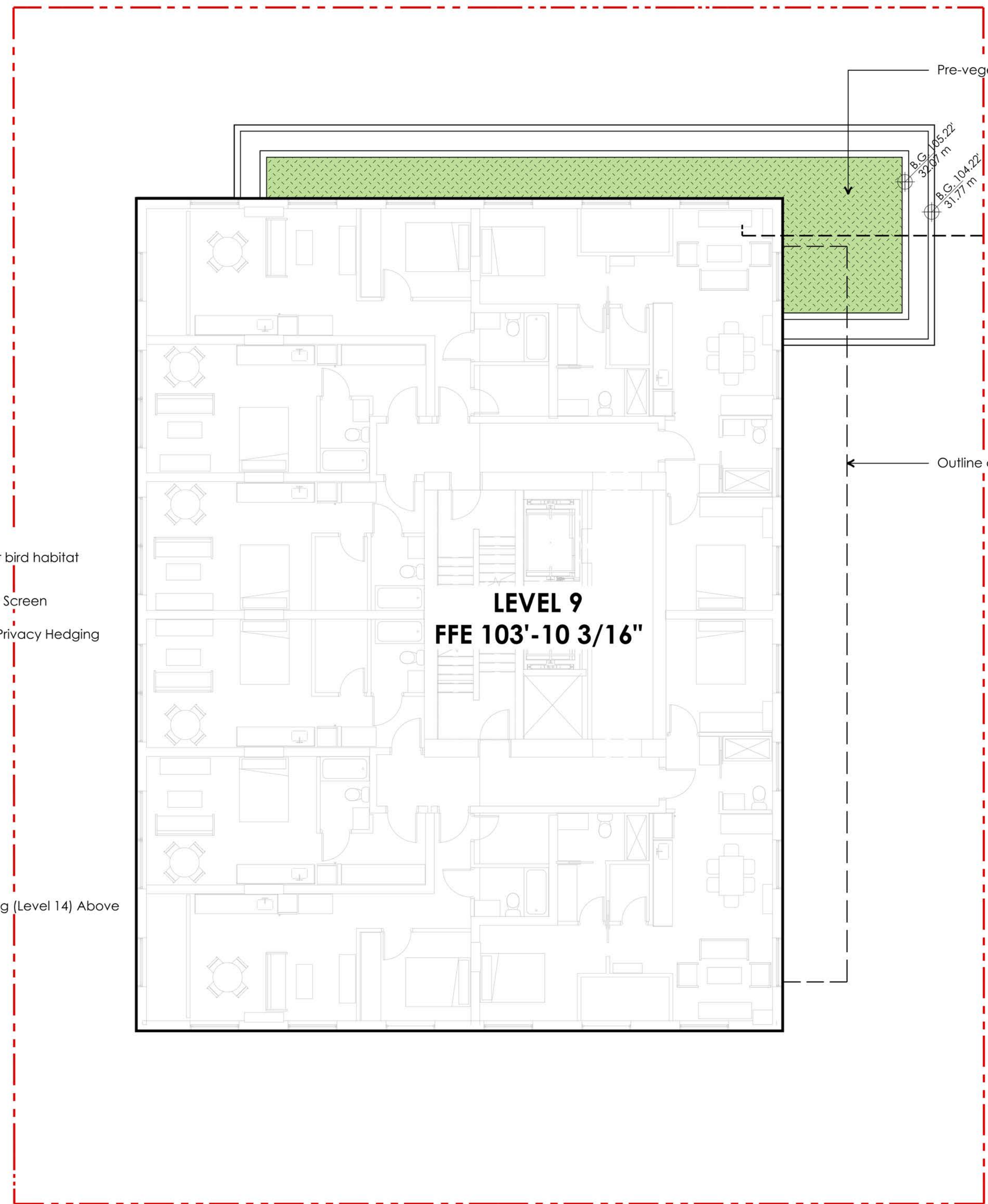
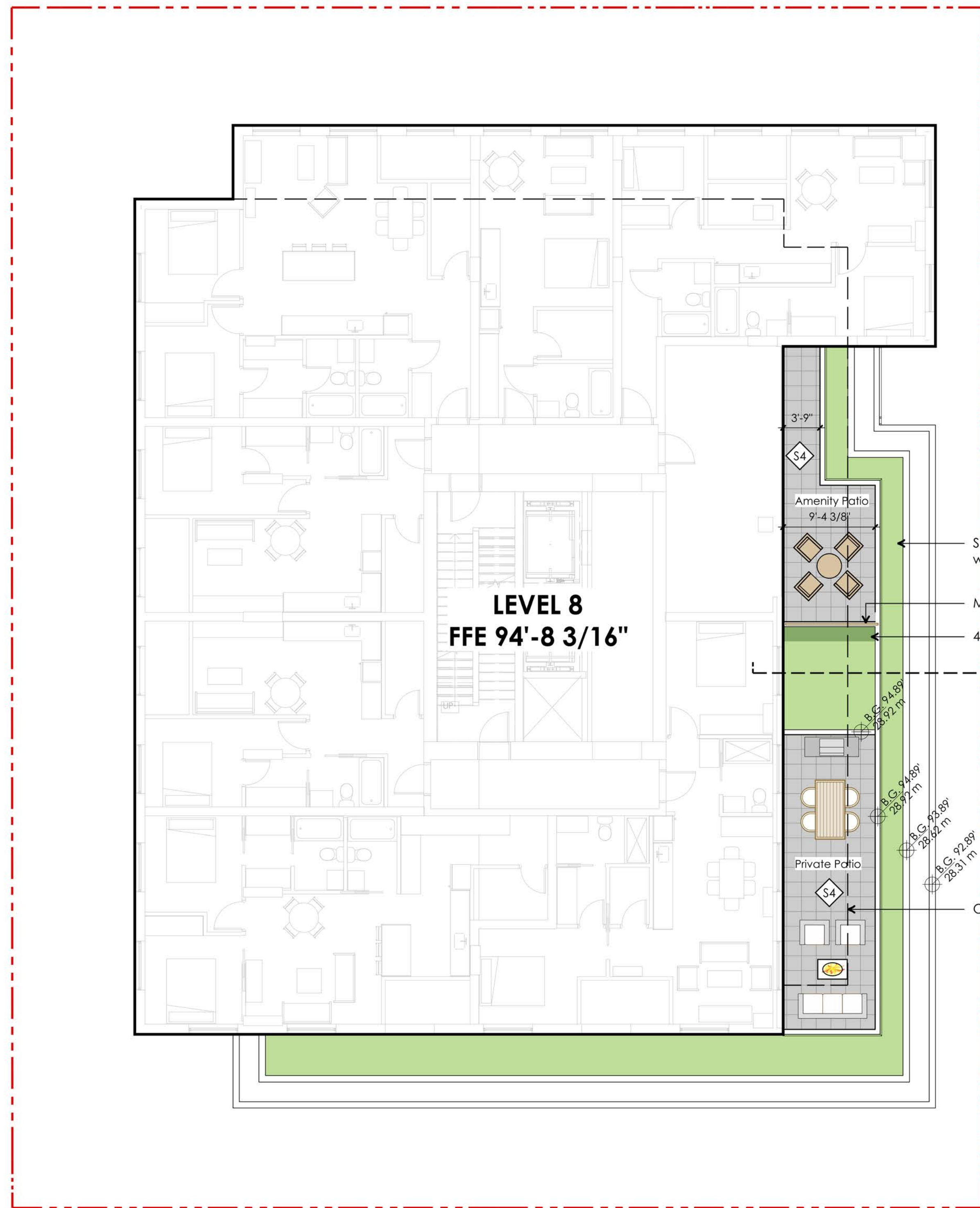
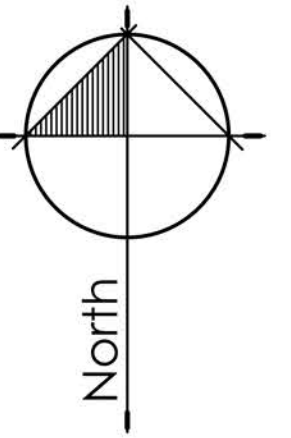
Project:
5W2
5 West 2nd Avenue
Vancouver, BC

Drawn by: LF
Checked by: PK
Date: 28 Oct, 2020
Scale: 1/8" = 1'-0"

Drawing Title:
Landscape Plan
- Level 2

Project No.:
20059

Sheet No.:
L - 1.2



01	Nov 16, 2020	Issued for Rezoning
no.:	date:	Item:
Revisions:		



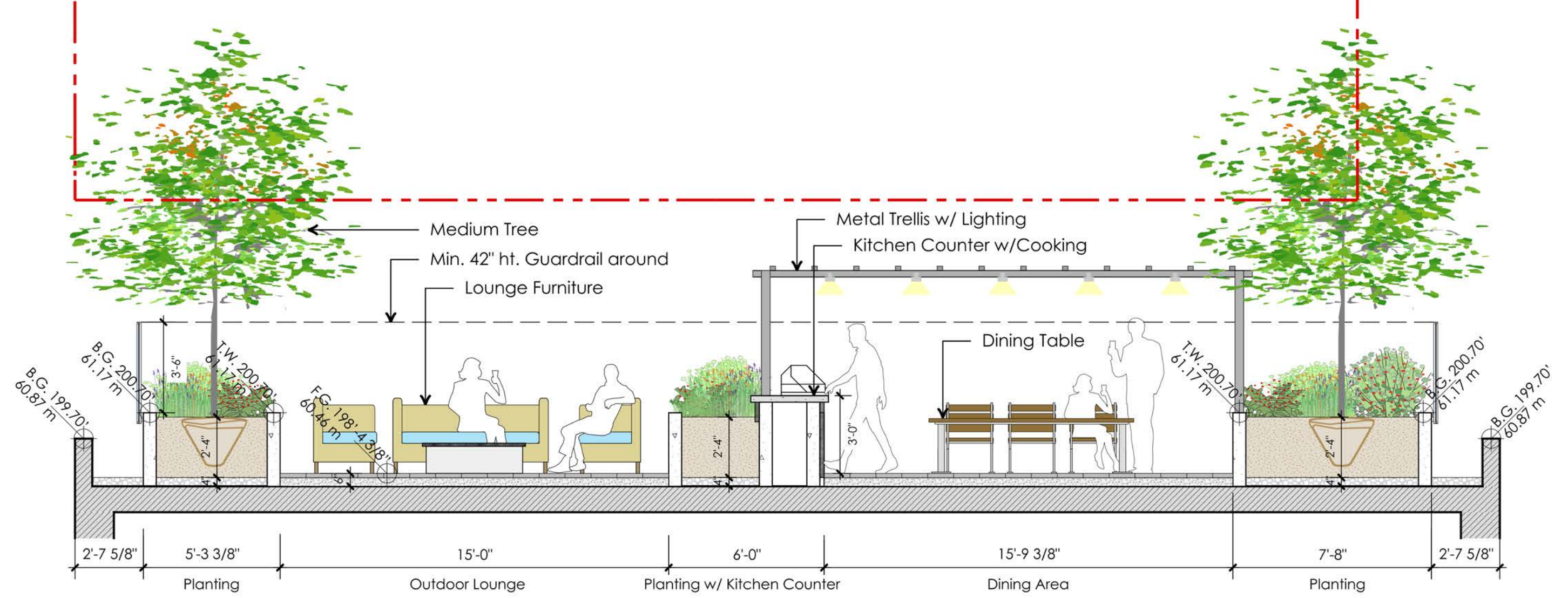
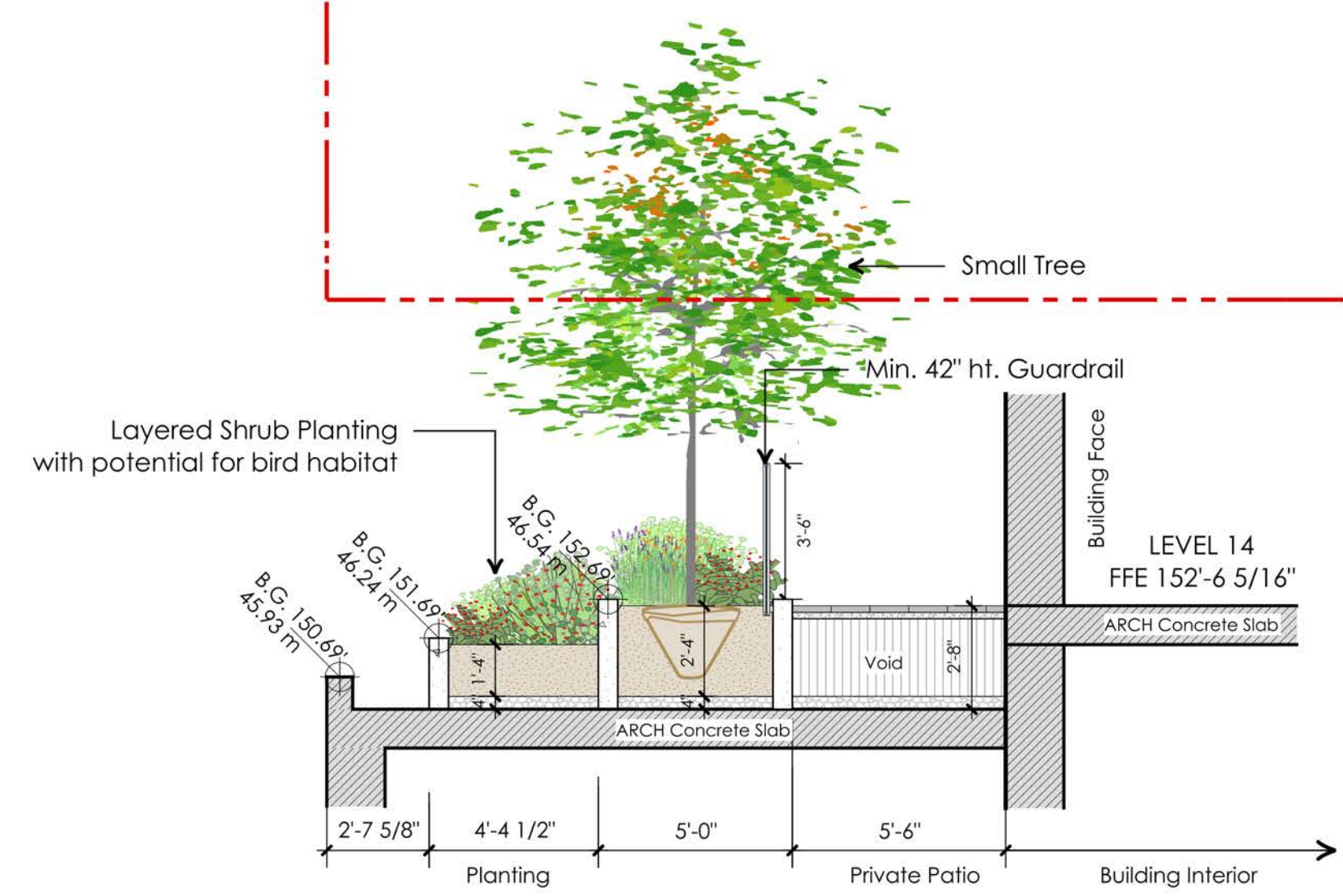
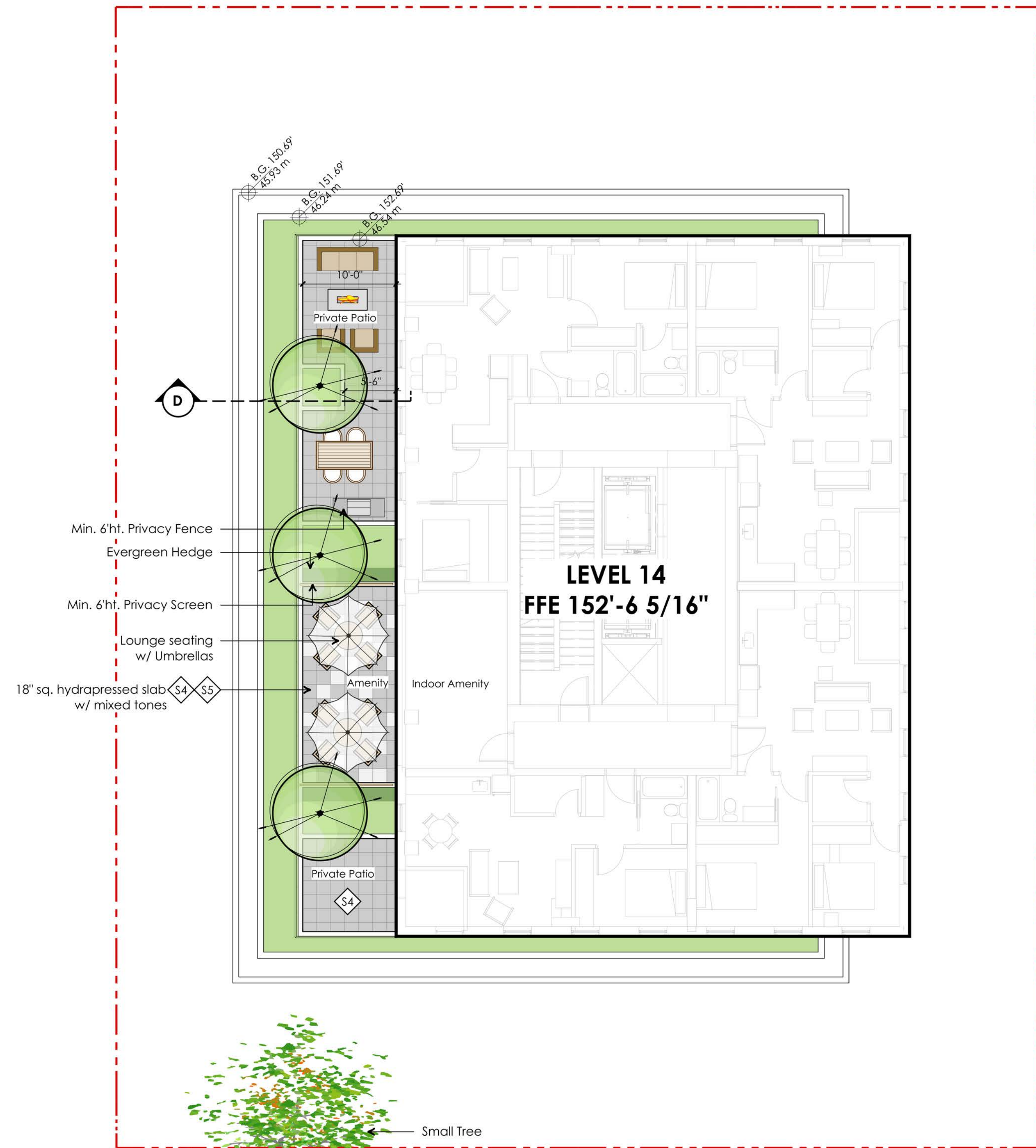
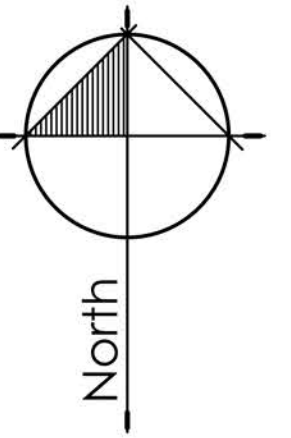
Project:
5W2
5 West 2nd Avenue
Vancouver, BC

Drawn by: LF
Checked by: PK
Date: 28 Oct, 2020
Scale: 1/8" = 1'-0"

Drawing Title:
Landscape Plan
- Level 8 + 9

Project No.:
20059

Sheet No.:
L - 1.3



01	Nov 16, 2020	Issued for Rezoning
no.:	date:	Item:
Revisions:		



Project:
5W2
5 West 2nd Avenue
Vancouver, BC

Drawn by:	LF
Checked by:	PK
Date:	28 Oct, 2020
Scale:	1/8" = 1'-0"

Drawing Title:
Landscape Plan
- Level 14 + Rooftop

Project No.:	20059
Sheet No.:	