

MOTION

4. Approval of Form of Development – 8705 French Street (formerly 8725 French Street)

THAT the form of development for this portion of the site known as 8705 French Street (formerly 8725 French Street) be approved generally as illustrated in the Development Application Number DP-2021-00531, prepared by Integra Architecture Inc., and received, November 17, 2021, provided that the Director of Planning may impose conditions and approve design changes which would not adversely affect either the development character of the site or adjacent properties.

* * * * *

Additional Background Information:

<https://shapeyourcity.ca/8725-french-st>

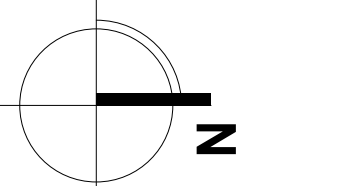


Integra

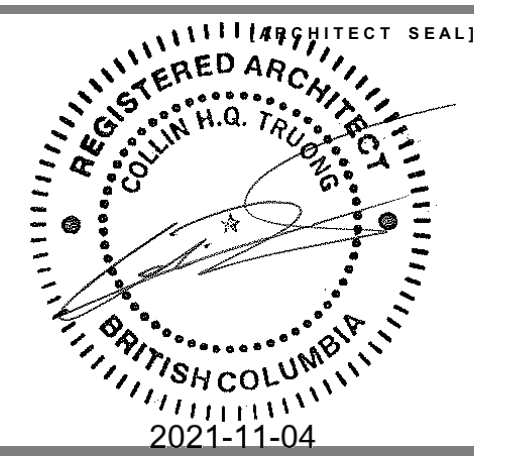
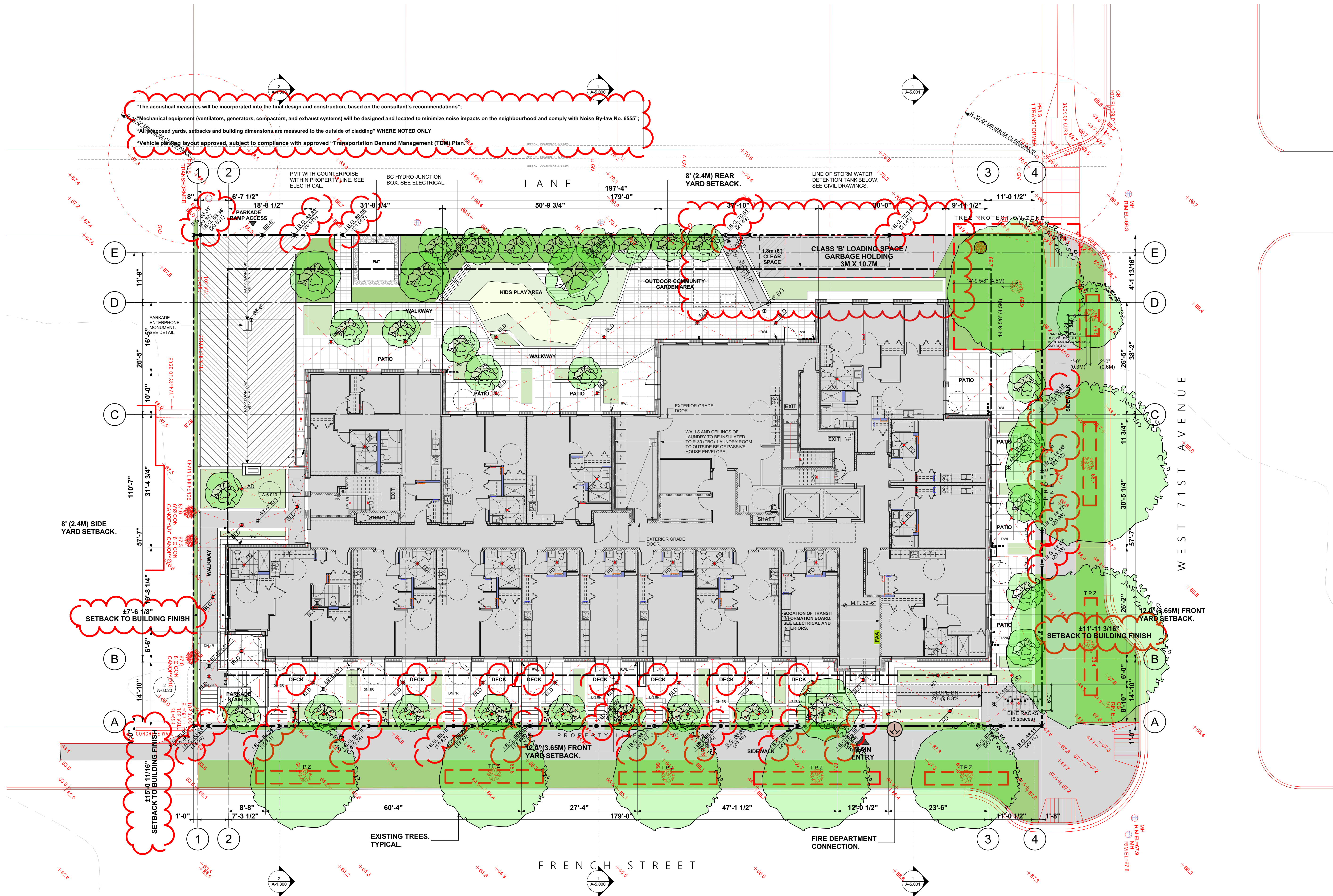
ARCHITECTURE INC.

2330-200 Granville Street
Vancouver, BC, V6C 1S4
www.integra-arch.com
Telephone: 604 688 4220

COPYRIGHT RESERVED. THIS DRAWING AND DESIGN IS AND AT ALL TIMES REMAINS THE EXCLUSIVE PROPERTY OF INTEGRARCHITECTURE INC. AND CANNOT BE USED WITHOUT THE ARCHITECT'S CONSENT.



[PROJECT TEAM]



BRIGHTSIDE COMMUNITY HOMES FOUNDATION

PROPOSED AFFORDABLE HOUSING
8725 FRENCH STREET
VANCOUVER, BC

SITE PLAN

18464 [PROJECT]
3/32" = 1'-0" [SCALE]
November 3, 2021 [DATE]
Reissued for DP [ISSUE]

[DRAWING]

A-1.000

		A1	A2	A3	B1	B2	B3	B4	C	D1	D2	D3	E1	F	G	H	K	L
Building Elements	Cladding	Cladding	Cladding	Cladding	Cladding and Accent Panels	Cladding and Feature Frames	Cladding and Feature Frames	Cladding	Cladding	Soffit	Soffit	Soffit @ Feature Frames	Wood Fascias	Flashing, Gutters, and down spouts	Aluminum Railing @ Balconies	Windows	Typical Entry/Door	Exposed Concrete Walls
Colour	Grey	Grey-Brown	Dark Grey	Beige	Charcoal Grey	White	Dark Grey	Wood-look	Wood-look	Dark Grey	Artic White	Artic White	Charcoal Grey	To Match Adjacent	Prefinished Aluminum	Black	Black	Grey
Material	Cementitious Lap Siding w/ 5" Exposure	Cementitious Lap Siding w/ 5" Exposure	Cementitious Lap Siding w/ 5" Exposure	Cementitious Panel Board	Cementitious Panel Board	Cementitious Panel Board	Cementitious Panel Board	Cementitious Panel Board	Cementitious Siding w/ 4" Exposure	Cementitious Siding w/ 4" Exposure	Cementitious Siding w/ 4" Exposure	Cementitious Siding w/ 4" Exposure	Dimensional lumber painted	Prefinished Aluminum	Prefinished Aluminum	Vinyl	Insulated Aluminum Door	C.I.P. Architectural Concrete
Product	HardiePanel® Lap Siding	HardiePanel® Lap Siding	HardiePanel® Lap Siding	HardiePanel® Siding	HardiePanel® Siding	HardiePanel® Siding	HardiePanel® Siding	HardiePanel® Siding	RusticSeries™ Lap Siding	RusticSeries™ Lap Siding	HardiePanel® Siding	HardiePanel® Siding	TBC	TBC	TBC	TBC	TBC	On-site C.I.P. Architectural Concrete w/ Reveal Line
Colour to Match / Manufacturer Reference No.	Pearl Gray	Rich Espresso	Iron Grey	Cobblestone	Benjamin Moore "Graphite 1603"	Artic White	Benjamin Moore "2121-10 Gray"	Summer Wheat	Summer Wheat	(To Match Material "E1")	(To Match Material "B3")	(To Match Material "B3")	Benjamin Moore "Graphite 1603"	To Match Adjacent	Prefinished Black	Black (white interior frames)	Prefinished Black	Clear Sealer
Manufacturer	JamesHardie or Similar	JamesHardie or Similar	JamesHardie or Similar	JamesHardie or Similar	JamesHardie or Similar	JamesHardie or Similar	JamesHardie or Similar	WOODTONE™ or Similar	WOODTONE™ or Similar	JamesHardie or Similar	JamesHardie or Similar	JamesHardie or Similar	TBC	TBC	TBC	TBC	TBC	N/A



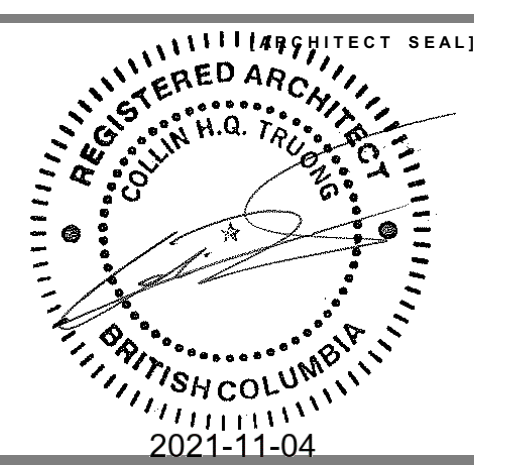
Integra

ARCHITECTURE INC.

2330-200 Granville Street
Vancouver, BC, V6C 1S4
www.integra-arch.com
Telephone: 604 688 4220

COPYRIGHT RESERVED. THIS DRAWING AND DESIGN IS AND AT ALL TIMES REMAINS THE EXCLUSIVE PROPERTY OF INTEGRARCHITECTURE INC. AND CANNOT BE USED WITHOUT THE ARCHITECT'S CONSENT.

[PROJECT TEAM]



BRIGHTSIDE COMMUNITY HOMES FOUNDATION

PROPOSED AFFORDABLE HOUSING
8725 FRENCH STREET
VANCOUVER, BC

ELEVATIONS

18464 [PROJECT]

3/32" = 1'-0" [SCALE]

November 3, 2021 [DATE]

Reissued for DP [ISSUE]

[DRAWING]

A-4.000



1 EAST ELEVATION
SCALE: 3/32" = 1'-0"



2 NORTH ELEVATION
SCALE: 3/32" = 1'-0"

MATERIAL & COLOUR SCHEDULE																		
Building Elements	A1	A2	A3	B1	B2	B3	B4	C	D1	D2	D3	E1	F	G	H	K	L	
Cladding	Cladding	Cladding	Cladding	Cladding	Cladding and Accent Panels	Cladding and Feature Frames	Cladding	Cladding	Cladding	Soffit	Soffit	Soffit @ Feature Frames	Wood Fascias	Flashing, Gutters, and down spouts	Aluminum Railing @ Balconies	Windows	Typical Entry/Door	Exposed Concrete Walls
Colour	Grey	Grey-Brown	Dark Grey	Beige	Charcoal Grey	White	Dark Grey	Wood-look	Wood-look	Dark Grey	Artic White	Charcoal Grey	Artic White	To Match Adjacent	Black	Black	Black	Grey
Material	Cementitious Lap Siding w/ 5" Exposure	Cementitious Lap Siding w/ 5" Exposure	Cementitious Lap Siding w/ 5" Exposure	Cementitious Panel Board	Cementitious Panel Board	Cementitious Panel Board	Cementitious Panel Board	Cementitious Siding w/ 4" Exposure	Cementitious Siding w/ 4" Exposure	Cementitious Siding w/ 4" Exposure	Cementitious Siding w/ 4" Exposure	Cementitious Siding w/ 4" Exposure	Dimensional lumber painted	Prefinished Aluminum	Prefinished Aluminum	Vinyl	Insulated Aluminum Door	C.I.P. Architectural Concrete
Product	HardiePanel® Lap Siding	HardiePanel® Lap Siding	HardiePanel® Lap Siding	HardiePanel® Siding	HardiePanel® Siding	HardiePanel® Siding	HardiePanel® Siding	RusticSeries™ Lap Siding	RusticSeries™ Lap Siding	HardiePanel® Siding	HardiePanel® Siding	TBC	TBC	TBC	TBC	TBC	TBC	On-site C.I.P. Architectural Concrete w/ Reveal Line
Colour to Match / Manufacturer Reference No.	Pearl Gray	Rich Espresso	Iron Grey	Cobblestone	Benjamin Moore "Graphite 1603"	Artic White	Benjamin Moore "2121-10 Gray"	Summer Wheat	Summer Wheat	(To Match Material "E1")	(To Match Material "B3")	Benjamin Moore "Graphite 1603"	To Match Adjacent	Prefinished Black	Black (white interior frames)	Prefinished Black	Prefinished Black	Clear Sealer
Manufacturer	JamesHardie or Similar	JamesHardie or Similar	JamesHardie or Similar	JamesHardie or Similar	JamesHardie or Similar	JamesHardie or Similar	JamesHardie or Similar	WOODSTONE™ or Similar	WOODSTONE™ or Similar	JamesHardie or Similar	JamesHardie or Similar	-	TBC	TBC	TBC	TBC	TBC	N/A



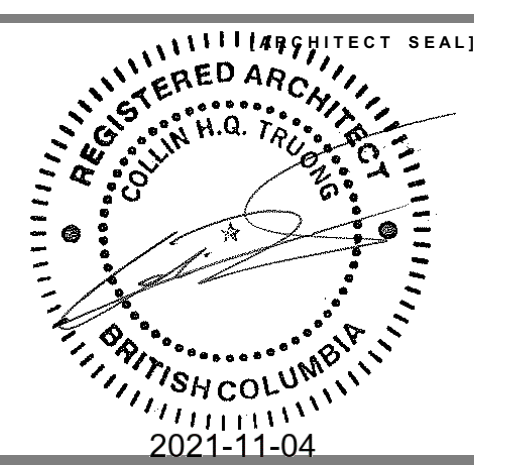
Integra

ARCHITECTURE INC.

2330-200 Granville Street
 Vancouver, BC, V6C 1S4
 www.integra-arch.com
 Telephone: 604 688 4220

COPYRIGHT RESERVED. THIS DRAWING AND DESIGN IS AND AT ALL TIMES REMAINS THE EXCLUSIVE PROPERTY OF INTEGRARCHITECTURE INC. AND CANNOT BE USED WITHOUT THE ARCHITECT'S CONSENT.

[PROJECT TEAM]



BRIGHTSIDE COMMUNITY HOMES FOUNDATION

PROPOSED AFFORDABLE HOUSING
 8725 FRENCH STREET
 VANCOUVER, BC

ELEVATIONS

18464 [PROJECT]
 3/32" = 1'-0" [SCALE]
 November 3, 2021 [DATE]
 Reissued for DP [ISSUE]

[DRAWING]

A-4.100



1 WEST ELEVATION
 SCALE: 3/32" = 1'-0"



2 SOUTH ELEVATION
 SCALE: 3/32" = 1'-0"