

MOTION

2. Approval of Form of Development: 488 Broughton Street (Formerly 480 Broughton Street)

THAT the form of development for this portion of the site known as 488 Broughton Street be approved generally as illustrated in the Development Application Number DP-2020-00849, prepared by Henriquez Partners Architects submitted electronically on August 30, 2021, provided that the Director of Planning may impose conditions and approve design changes which would not adversely affect either the development character of the site or adjacent properties.

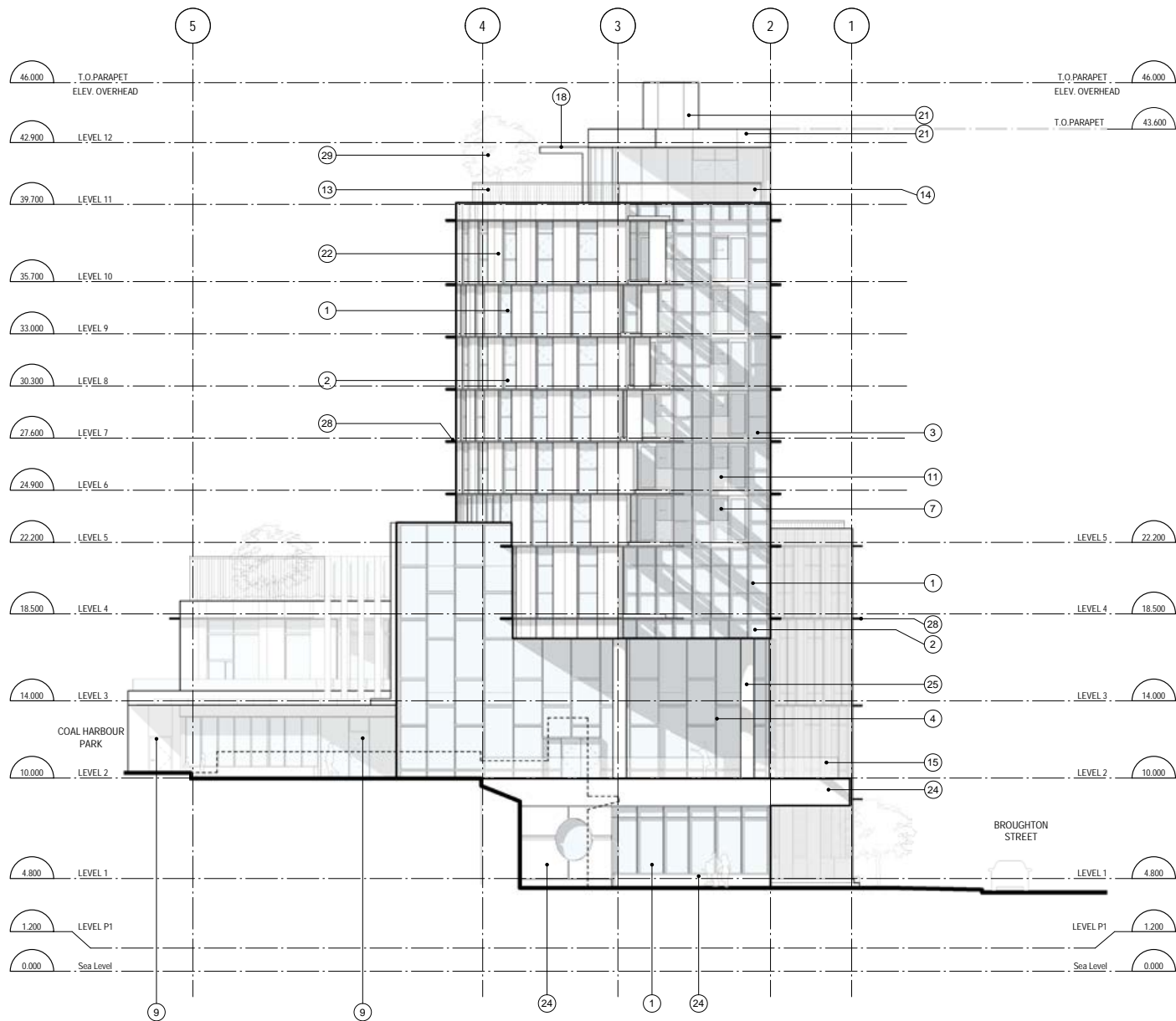
* * * * *

Additional Background Information:

<https://shapeyourcity.ca/480-broughton-st>



C:\Users\Jozef Pavlik\OneDrive - Henriquez Partners Architects\Documents\JOZEF\Backup\REVIT-2020-Backup\1905 CH HPA MAIN DP _josefpavlik.rvt
8/16/2021 1:58:10 PM



MATERIAL LEGEND	
1	- WINDOW SYSTEM 1 - VISION GLASS (INC. OPERABLE)
2	- WINDOW SYSTEM 1 - SPANDREL GLASS
3	- WINDOW SYSTEM 1 - SPANDREL BYPASS
4	- WINDOW SYSTEM 2 - VISION GLASS + VERTICAL FINS
5	- WINDOW SYSTEM 2 - SPANDREL GLASS + VERTICAL FINS
6	- OPERABLE VENT IN WINDOW SYSTEM
7	- SLIDING GLASS DOOR IN WINDOW SYSTEM
8	- SWING DOOR IN WINDOW SYSTEM
9	- ALUMINUM ENTRANCE DOOR IN WINDOW SYSTEM
10	- BI-FOLDING GLAZED DOOR SYSTEM
11	- JULIET BALCONY GLASS GUARD IN WINDOW SYSTEM
12	- ALUMINUM GUARDRAIL AT CHILDCARE (3m HIGH)
13	- ALUMINUM GUARDRAIL AT ROOF DECKS
14	- GLAZED GUARDRAIL AT ROOF DECKS
15	- STRUCTURAL GLASS GUARDRAIL AT SCHOOL + PARK
16	- GLASS CANOPY AT SCHOOL ENTRY + PARK
17	- GLASS CANOPY AT RESIDENTIAL ENTRY
18	- GLASS CANOPY AT RESIDENTIAL AMENITY
19	- GLASS CANOPY WITH CUSTOM FRIT PATTERN AT CHILDCARE
20	- PREFINISHED METAL PANEL
21	- PRECAST CONCRETE PANELS (FINISH 1)
22	- PRECAST INSULATED CONCRETE PANELS (FINISH 1)
23	- PRECAST INSULATED CONCRETE PANELS (FINISH 2)
24	- ARCHITECTURAL CONCRETE FINISH
25	- ARCHITECTURAL CONCRETE COLUMN
26	- ARCHITECTURAL LOUVRE
27	- CUSTOM ARCHITECTURAL SCREEN
28	- PRE-FINISHED ALUMINUM FIN (SOLAR SHADING)
29	- LANDSCAPE OR PLANTER (REFER TO LANDSCAPE)
30	- LANDSCAPE PLANTER WALL
31	- STAINLESS STEEL BIKE RACK
32	- SIAMESE CONNECTION
33	- PAINTED METAL DOOR
34	- SIGNAGE

Copyright reserved. The documents and design as an instrument of service are and at all times remain the exclusive property of HENRIQUEZ PARTNERS ARCHITECTS and may not be reproduced without the express written consent of HENRIQUEZ PARTNERS ARCHITECTS. All designs and related information in whole or in part shown on these documents are for the express use for the specified project only and shall not be used otherwise without the express written consent of HENRIQUEZ PARTNERS ARCHITECTS.

The Contractor shall verify and be responsible for all dimensions on site and shall inform HENRIQUEZ PARTNERS ARCHITECTS of any variations from the dimensions and conditions shown on the documents. Shop drawings shall be submitted to HENRIQUEZ PARTNERS ARCHITECTS for review and approval prior to fabrication.

HENRIQUEZ PARTNERS ARCHITECTS do not warrant that the drawings are produced to scale. Dimensions may not be scaled from the documents.

ISSUED FOR DP PRIOR-TO's AUG 16, 2021
ISSUED FOR DPMRZ NOV 20, 2020

HENRIQUEZ

Henriquez Partners Architects

598 W Georgia Street

Vancouver BC V6B 2A3 T 604.687.5681

JOB TITLE

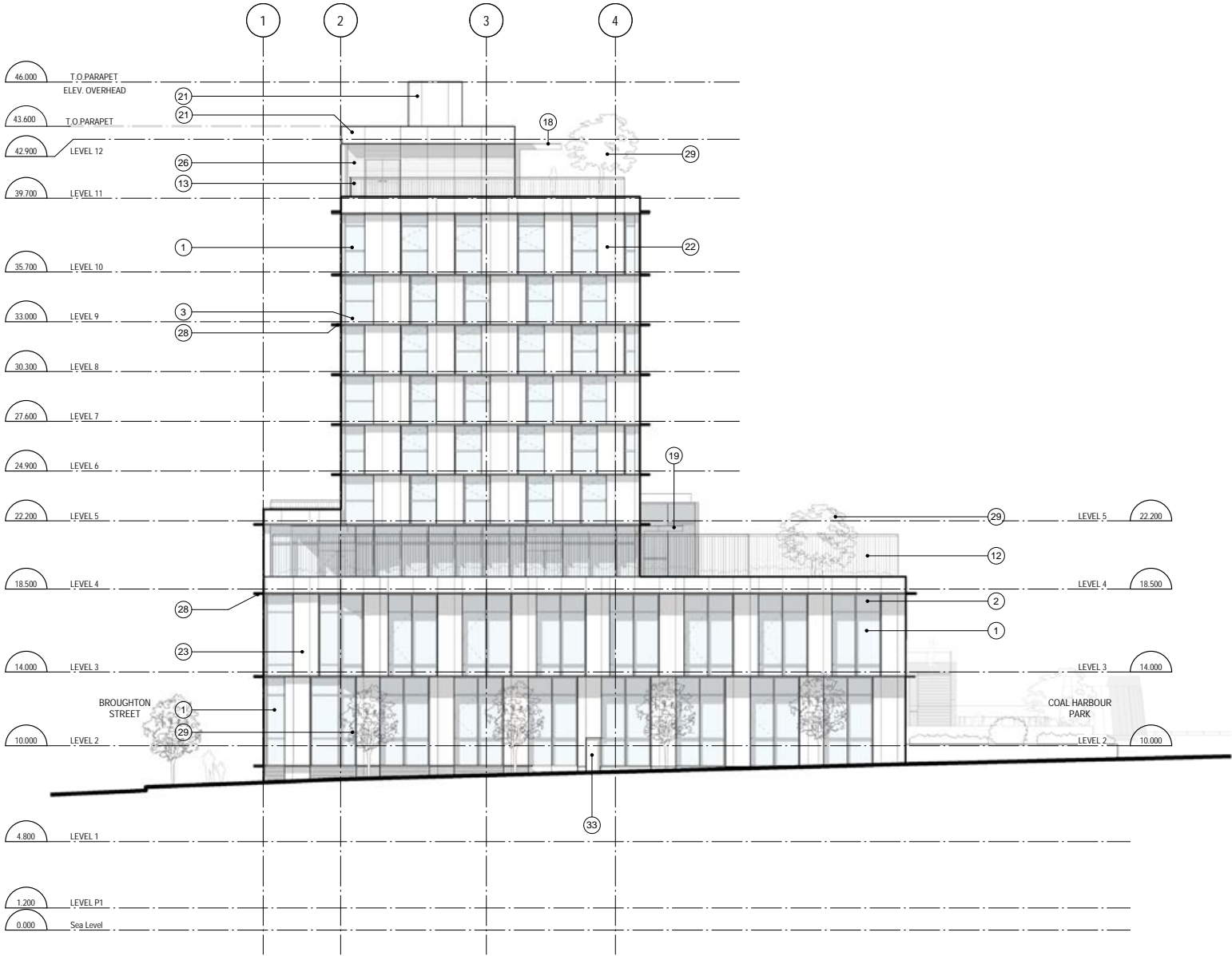
COAL HARBOUR

480 BROUGHTON ST. VANCOUVER, BC

CONSULTANT

DRAWING TITLE	
NORTH ELEVATION	
DATE	DRAWN
JUN 2020	Author
SCALE	CHECKED
1:150	Checker
JOB NO.	
1905	

A3.01



MATERIAL LEGEND

- 1 - WINDOW SYSTEM 1 - VISION GLASS (INC. OPERABLE)
- 2 - WINDOW SYSTEM 1 - SPANDREL GLASS
- 3 - WINDOW SYSTEM 1 - SPANDREL BYPASS
- 4 - WINDOW SYSTEM 2 - VISION GLASS + VERTICAL FINS
- 5 - WINDOW SYSTEM 2 - SPANDREL GLASS + VERTICAL FINS
- 6 - OPERABLE VENT IN WINDOW SYSTEM
- 7 - SLIDING GLASS DOOR IN WINDOW SYSTEM
- 8 - SWING DOOR IN WINDOW SYSTEM
- 9 - ALUMINUM ENTRANCE DOOR IN WINDOW SYSTEM
- 10 - BI-FOLDING GLAZED DOOR SYSTEM
- 11 - JULIET BALCONY GLASS GUARD IN WINDOW SYSTEM
- 12 - ALUMINUM GUARDRAIL AT CHILDCARE (3m HIGH)
- 13 - ALUMINUM GUARDRAIL AT ROOF DECKS
- 14 - GLAZED GUARDRAIL AT ROOF DECKS
- 15 - STRUCTURAL GLASS GUARDRAIL AT SCHOOL + PARK
- 16 - GLASS CANOPY AT SCHOOL ENTRY + PARK
- 17 - GLASS CANOPY AT RESIDENTIAL ENTRY
- 18 - GLASS CANOPY AT RESIDENTIAL AMENITY
- 19 - GLASS CANOPY WITH CUSTOM FRIT PATTERN AT CHILDCARE
- 20 - PREFINISHED METAL PANEL
- 21 - PRECAST CONCRETE PANELS (FINISH 1)
- 22 - PRECAST INSULATED CONCRETE PANELS (FINISH 1)
- 23 - PRECAST INSULATED CONCRETE PANELS (FINISH 2)
- 24 - ARCHITECTURAL CONCRETE FINISH
- 25 - ARCHITECTURAL CONCRETE COLUMN
- 26 - ARCHITECTURAL LOUVRE
- 27 - CUSTOM ARCHITECTURAL SCREEN
- 28 - PRE-FINISHED ALUMINUM FIN (SOLAR SHADING)
- 29 - LANDSCAPE OR PLANTER (REFER TO LANDSCAPE)
- 30 - LANDSCAPE PLANTER WALL
- 31 - STAINLESS STEEL BIKE RACK
- 32 - SIAMESE CONNECTION
- 33 - PAINTED METAL DOOR
- 34 - SIGNAGE

Copyright reserved. The documents and design as an instrument of service are and at all times remain the exclusive property of HENRIQUEZ PARTNERS ARCHITECTS and may not be reproduced without the express written consent of HENRIQUEZ PARTNERS ARCHITECTS. All designs and related information in whole or in part shown on these documents are for the express use for the specified project only and shall not be used otherwise without the express written consent of HENRIQUEZ PARTNERS ARCHITECTS.

The Contractor shall verify and be responsible for all dimensions on site and shall inform HENRIQUEZ PARTNERS ARCHITECTS of any variations from the dimensions and conditions shown on the documents. Shop drawings shall be submitted to HENRIQUEZ PARTNERS ARCHITECTS for review and approval prior to fabrication.

HENRIQUEZ PARTNERS ARCHITECTS do not warrant that the drawings are produced to scale. Dimensions may not be scaled from the documents.

ISSUED FOR DP PRIOR TO's AUG 16, 2021

ISSUED FOR DP/RZ NOV 20, 2020

HENRIQUEZ Henriquez Partners Architects
598 W Georgia Street
Vancouver BC V6B 2A3 T 604.687.5681

JOB TITLE:
COAL HARBOUR
480 BROUGHTON ST. VANCOUVER, BC
CONSULTANT

DRAWING TITLE:

SOUTH ELEVATION

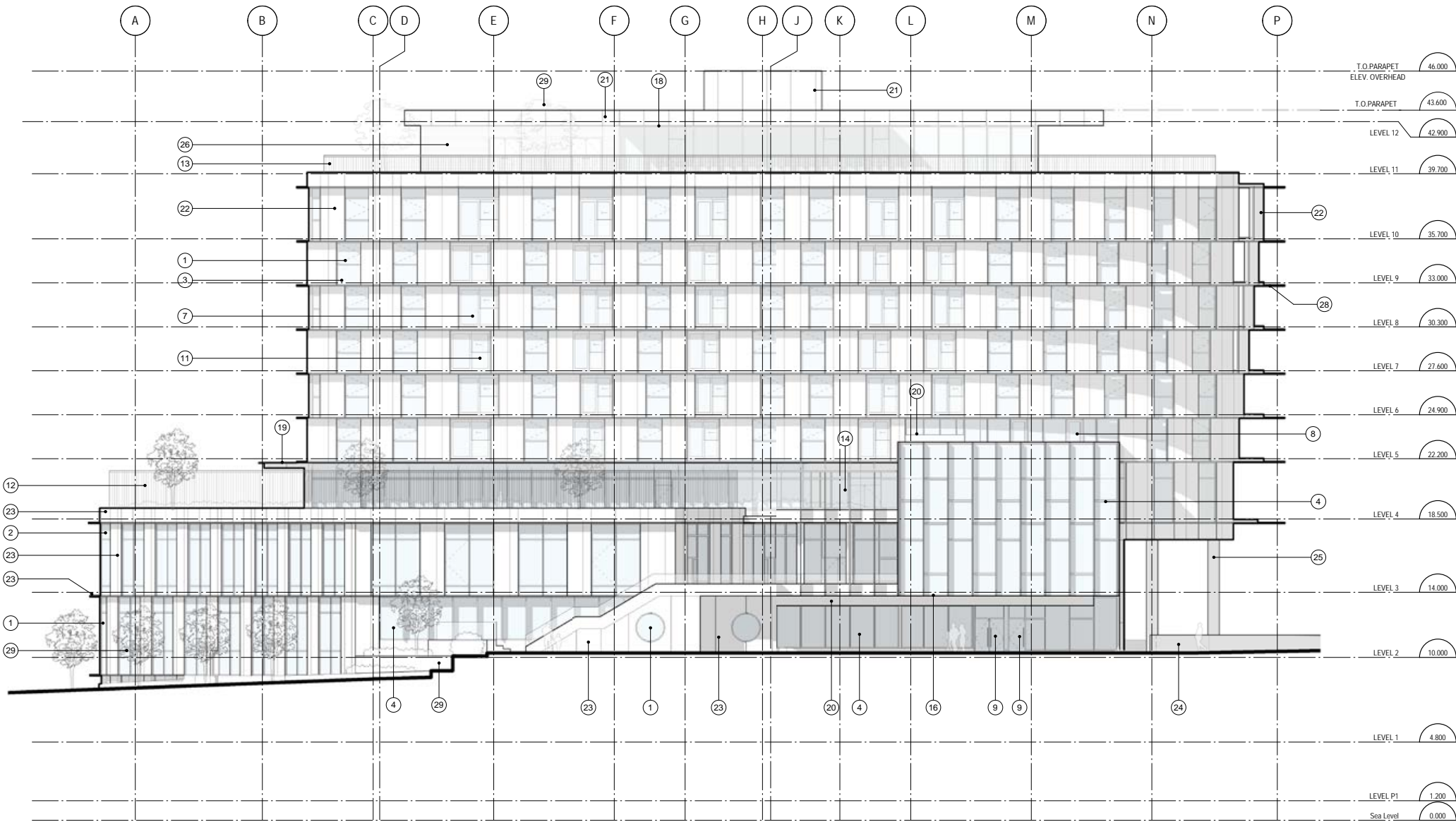
DATE	JUN 2020	DRAWN	Author
SCALE	1:150	CHECKED	Checker
JOB NO.	1905		

A3.02

C:\Users\Jozef Pavlik\OneDrive - Henriquez Partners Architects\Documents\JOZEF\Backup\REVIT-2020-Backup\1905 CH HPA MAIN DP_jozefpavlik.rvt
8/16/2021 1:58:44 PM

MATERIAL LEGEND

- 1 - WINDOW SYSTEM 1 - VISION GLASS (INC. OPERABLE)
- 2 - WINDOW SYSTEM 1 - SPANDREL GLASS
- 3 - WINDOW SYSTEM 1 - SPANDREL BYPASS
- 4 - WINDOW SYSTEM 2 - VISION GLASS + VERTICAL FINS
- 5 - WINDOW SYSTEM 2 - SPANDREL GLASS + VERTICAL FINS
- 6 - OPERABLE VENT IN WINDOW SYSTEM
- 7 - SLIDING GLASS DOOR IN WINDOW SYSTEM
- 8 - SWING DOOR IN WINDOW SYSTEM
- 9 - ALUMINUM ENTRANCE DOOR IN WINDOW SYSTEM
- 10 - BI-FOLDING GLAZED DOOR SYSTEM
- 11 - JULIET BALCONY GLASS GUARD IN WINDOW SYSTEM
- 12 - ALUMINUM GUARDRAIL AT CHILDCARE (3m HIGH)
- 13 - ALUMINUM GUARDRAIL AT ROOF DECKS
- 14 - GLAZED GUARDRAIL AT ROOF DECKS
- 15 - STRUCTURAL GLASS GUARDRAIL AT SCHOOL + PARK
- 16 - GLASS CANOPY AT SCHOOL ENTRY + PARK
- 17 - GLASS CANOPY AT RESIDENTIAL ENTRY
- 18 - GLASS CANOPY AT RESIDENTIAL AMENITY
- 19 - GLASS CANOPY WITH CUSTOM FRIT PATTERN AT CHILDCARE
- 20 - PREFINISHED METAL PANEL
- 21 - PRECAST CONCRETE PANELS (FINISH 1)
- 22 - PRECAST INSULATED CONCRETE PANELS (FINISH 1)
- 23 - PRECAST INSULATED CONCRETE PANELS (FINISH 2)
- 24 - ARCHITECTURAL CONCRETE FINISH
- 25 - ARCHITECTURAL CONCRETE COLUMN
- 26 - ARCHITECTURAL LOUVRE
- 27 - CUSTOM ARCHITECTURAL SCREEN
- 28 - PRE-FINISHED ALUMINUM FIN (SOLAR SHADING)
- 29 - LANDSCAPE OR PLANTER (REFER TO LANDSCAPE)
- 30 - LANDSCAPE PLANTER WALL
- 31 - STAINLESS STEEL BIKE RACK
- 32 - SIAMESE CONNECTION
- 33 - PAINTED METAL DOOR
- 34 - SIGNAGE



Copyright reserved. The documents and design as an instrument of service are and at all times remain the exclusive property of HENRIQUEZ PARTNERS ARCHITECTS and may not be reproduced without the express written consent of HENRIQUEZ PARTNERS ARCHITECTS. All designs and related information in whole or in part shown on these documents are for the express use for the specified project only and shall not be used otherwise without the express written consent of HENRIQUEZ PARTNERS ARCHITECTS.

The Contractor shall verify and be responsible for all dimensions on site and shall inform HENRIQUEZ PARTNERS ARCHITECTS of any variations from the dimensions and conditions shown on the documents. Shop drawings shall be submitted to HENRIQUEZ PARTNERS ARCHITECTS for review and approval prior to fabrication.

HENRIQUEZ PARTNERS ARCHITECTS do not warrant that the drawings are produced to scale. Dimensions may not be scaled from the documents.

1 ISSUED FOR DP PRIOR TO'S AUG 16, 2021

ISSUED FOR DPRZ NOV 20, 2020

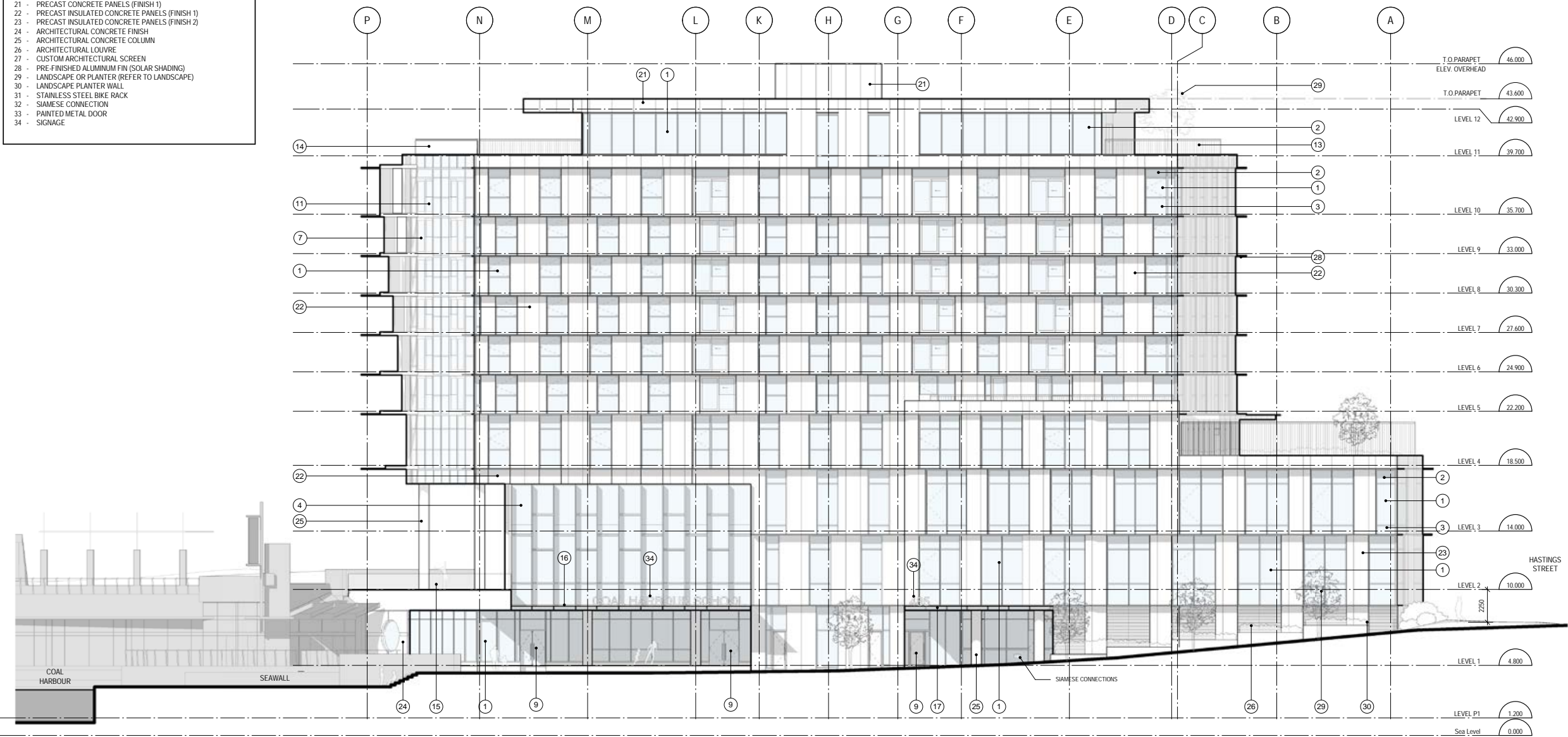
HENRIQUEZ Henriquez Partners Architects
598 W Georgia Street
Vancouver BC V6B 2A3 T 604.687.5681

JOB TITLE
COAL HARBOUR
480 BROUGHTON ST. VANCOUVER, BC
CONSULTANT

DRAWING TITLE
EAST ELEVATION
DATE JUN 2020 DRAWN Author
SCALE 1:150 CHECKED Checker
JOB NO. 1905

A3.03

MATERIAL LEGEND	
1	WINDOW SYSTEM 1 - VISION GLASS (INC. OPERABLE)
2	WINDOW SYSTEM 1 - SPANDREL GLASS
3	WINDOW SYSTEM 1 - SPANDREL BYPASS
4	WINDOW SYSTEM 2 - VISION GLASS - VERTICAL FINS
5	WINDOW SYSTEM 2 - SPANDREL GLASS - VERTICAL FINS
6	OPERABLE VENT IN WINDOW SYSTEM
7	SLIDING GLASS DOOR IN WINDOW SYSTEM
8	SWING DOOR IN WINDOW SYSTEM
9	ALUMINUM ENTRANCE DOOR IN WINDOW SYSTEM
10	BIFOLDING GLAZED DOOR SYSTEM
11	JULIET BALCONY GLASS GUARD IN WINDOW SYSTEM
12	ALUMINUM GUARDRAIL AT CHILDCARE (3m HIGH)
13	ALUMINUM GUARDRAIL AT ROOF DECKS
14	GLAZED GUARDRAIL AT ROOF DECKS
15	STRUCTURAL GLASS GUARDRAIL AT SCHOOL + PARK
16	GLASS CANOPY AT SCHOOL ENTRY + PARK
17	GLASS CANOPY AT RESIDENTIAL ENTRY
18	GLASS CANOPY AT RESIDENTIAL AMENITY
19	GLASS CANOPY WITH CUSTOM FRIT PATTERN AT CHILDCARE
20	PREFINISHED METAL PANEL
21	PRECAST CONCRETE PANELS (FINISH 1)
22	PRECAST INSULATED CONCRETE PANELS (FINISH 1)
23	PRECAST INSULATED CONCRETE PANELS (FINISH 2)
24	ARCHITECTURAL CONCRETE FINISH
25	ARCHITECTURAL CONCRETE COLUMN
26	ARCHITECTURAL LOUVRE
27	CUSTOM ARCHITECTURAL SCREEN
28	PRE-FINISHED ALUMINUM FIN (SOLAR SHADING)
29	LANDSCAPE OR PLANTER (REFER TO LANDSCAPE)
30	LANDSCAPE PLANTER WALL
31	STAINLESS STEEL BIKE RACK
32	SIAMESE CONNECTION
33	PAINTED METAL DOOR
34	SIGNAGE



Copyright reserved. The documents and design as an instrument of service are and at all times remain the exclusive property of HENRIQUEZ PARTNERS ARCHITECTS and may not be reproduced without the express written consent of HENRIQUEZ PARTNERS ARCHITECTS. All designs and related information in whole or in part shown on these documents are for the express use for the specified project only and shall not be used otherwise without the express written consent of HENRIQUEZ PARTNERS ARCHITECTS.

The Contractor shall verify and be responsible for all dimensions on site and shall inform HENRIQUEZ PARTNERS ARCHITECTS of any variations from the dimensions and conditions shown on the documents. Shop drawings shall be submitted to HENRIQUEZ PARTNERS ARCHITECTS for review and approval prior to fabrication.

HENRIQUEZ PARTNERS ARCHITECTS do not warrant that the drawings are produced to scale. Dimensions may not be scaled from the documents.

ISSUED FOR DP PRIOR TO's AUG 16, 2021

ISSUED FOR DP/RZ NOV 20, 2020

HENRIQUEZ Henriquez Partners Architects
598 W Georgia Street
Vancouver BC V6B 2A3 T 604.687.5681

COAL HARBOUR
480 BROUGHTON ST. VANCOUVER, BC

CONSULTANT

DRAWING TITLE

WEST ELEVATION

DATE	JUN 2020	DRAWN	Author
SCALE	1:150	CHECKED	Checker
JOB NO.	1905		

A3.04