

MOTION

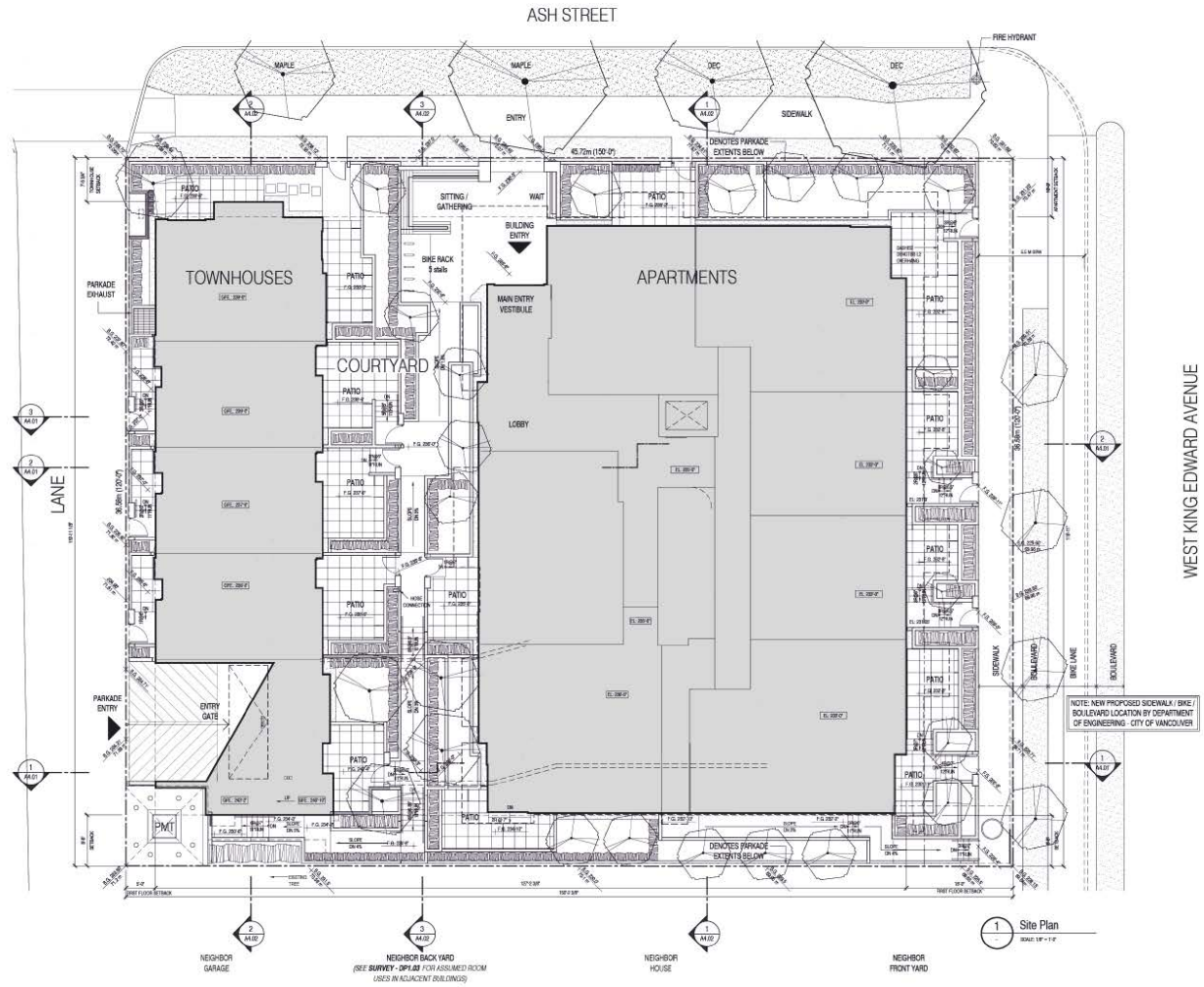
1. **Approval of Form of Development: 4128 Ash Street**

THAT the form of development for this portion of the site known as 4128 Ash Street (formerly known as 582 - 588 West King Edward Avenue) be approved generally as illustrated in the Development Application Number DP-2020-00239, prepared by RWA Architecture, and stamped "Received, Community Services Group, Development Services", on December 14, 2021, provided that the Director of Planning may impose conditions and approve design changes which would not adversely affect either the development character of the site or adjacent properties.

* * * * *

Additional Background Information:

<https://rezoning.vancouver.ca/applications/582-588wkingedwardave/index.htm>

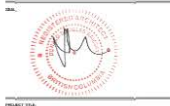


Aragon ARAGON

DESCRIPTION	QUANTITY	UNIT
1.0000	1.0000	1.0000
2.0000	2.0000	2.0000
3.0000	3.0000	3.0000
4.0000	4.0000	4.0000
5.0000	5.0000	5.0000
6.0000	6.0000	6.0000
7.0000	7.0000	7.0000
8.0000	8.0000	8.0000
9.0000	9.0000	9.0000
10.0000	10.0000	10.0000
11.0000	11.0000	11.0000
12.0000	12.0000	12.0000
13.0000	13.0000	13.0000
14.0000	14.0000	14.0000
15.0000	15.0000	15.0000
16.0000	16.0000	16.0000
17.0000	17.0000	17.0000
18.0000	18.0000	18.0000
19.0000	19.0000	19.0000
20.0000	20.0000	20.0000
21.0000	21.0000	21.0000
22.0000	22.0000	22.0000
23.0000	23.0000	23.0000
24.0000	24.0000	24.0000
25.0000	25.0000	25.0000
26.0000	26.0000	26.0000
27.0000	27.0000	27.0000
28.0000	28.0000	28.0000
29.0000	29.0000	29.0000
30.0000	30.0000	30.0000
31.0000	31.0000	31.0000
32.0000	32.0000	32.0000
33.0000	33.0000	33.0000
34.0000	34.0000	34.0000
35.0000	35.0000	35.0000
36.0000	36.0000	36.0000
37.0000	37.0000	37.0000
38.0000	38.0000	38.0000
39.0000	39.0000	39.0000
40.0000	40.0000	40.0000
41.0000	41.0000	41.0000
42.0000	42.0000	42.0000
43.0000	43.0000	43.0000
44.0000	44.0000	44.0000
45.0000	45.0000	45.0000
46.0000	46.0000	46.0000
47.0000	47.0000	47.0000
48.0000	48.0000	48.0000
49.0000	49.0000	49.0000
50.0000	50.0000	50.0000
51.0000	51.0000	51.0000
52.0000	52.0000	52.0000
53.0000	53.0000	53.0000
54.0000	54.0000	54.0000
55.0000	55.0000	55.0000
56.0000	56.0000	56.0000
57.0000	57.0000	57.0000
58.0000	58.0000	58.0000
59.0000	59.0000	59.0000
60.0000	60.0000	60.0000
61.0000	61.0000	61.0000
62.0000	62.0000	62.0000
63.0000	63.0000	63.0000
64.0000	64.0000	64.0000
65.0000	65.0000	65.0000
66.0000	66.0000	66.0000
67.0000	67.0000	67.0000
68.0000	68.0000	68.0000
69.0000	69.0000	69.0000
70.0000	70.0000	70.0000
71.0000	71.0000	71.0000
72.0000	72.0000	72.0000
73.0000	73.0000	73.0000
74.0000	74.0000	74.0000
75.0000	75.0000	75.0000
76.0000	76.0000	76.0000
77.0000	77.0000	77.0000
78.0000	78.0000	78.0000
79.0000	79.0000	79.0000
80.0000	80.0000	80.0000
81.0000	81.0000	81.0000
82.0000	82.0000	82.0000
83.0000	83.0000	83.0000
84.0000	84.0000	84.0000
85.0000	85.0000	85.0000
86.0000	86.0000	86.0000
87.0000	87.0000	87.0000
88.0000	88.0000	88.0000
89.0000	89.0000	89.0000
90.0000	90.0000	90.0000
91.0000	91.0000	91.0000
92.0000	92.0000	92.0000
93.0000	93.0000	93.0000
94.0000	94.0000	94.0000
95.0000	95.0000	95.0000
96.0000	96.0000	96.0000
97.0000	97.0000	97.0000
98.0000	98.0000	98.0000
99.0000	99.0000	99.0000
100.0000	100.0000	100.0000

PROJECT: [] DATE: [] BY: []

LEGAL DESCRIPTION:
 LOT 1 & 2
 BLOCK 810
 DISTRICT LOT 526
 PLAN 8859
 NEW WESTMINSTER
 CIVIC ADDRESS:
 4128 ASH STREET VANCOUVER, BC
 CANADA



PROJECT TITLE:
Cambie Station
 4128 Ash Street, Vancouver, BC

ISSUED TITLE:
 Site Plan

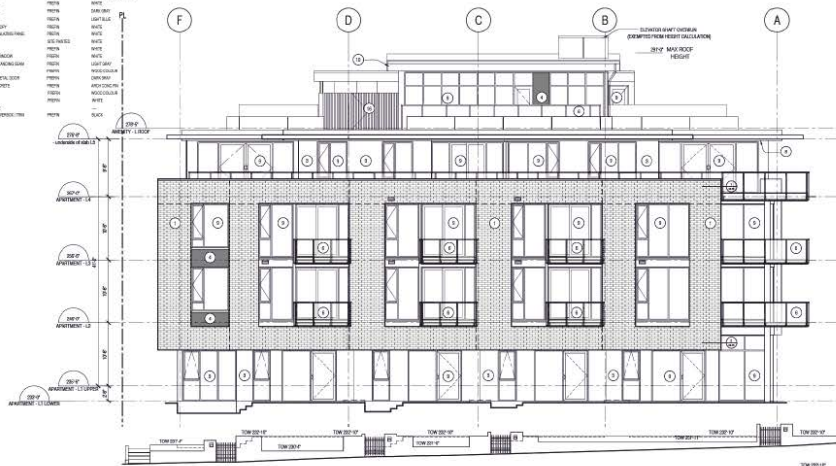
SCALE: 1/8" = 1'-0"
 SHEET NO: **A1.03**

Issued for DP Re-submission - Aug 16, 2021

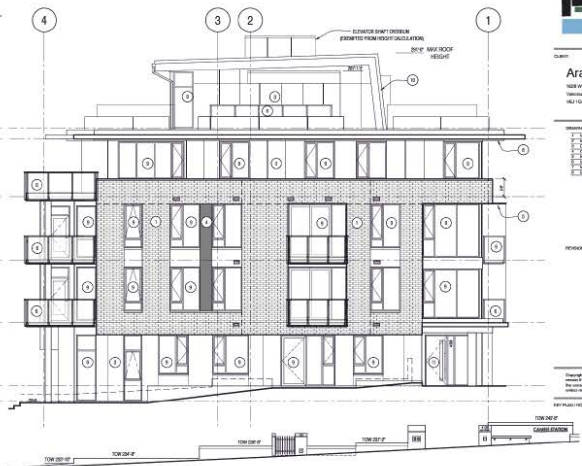
1806

MATERIAL

1. BRICK CLAY	FINISH	BRICK
2. BRICK GLAZED	FINISH	BRICK GLAZED
3. CONCRETE PAINT	FINISH	CONCRETE PAINT
4. CONCRETE PAINT	FINISH	CONCRETE PAINT
5. METAL CLADDING	FINISH	METAL CLADDING
6. METAL CLADDING	FINISH	METAL CLADDING
7. METAL CLADDING	FINISH	METAL CLADDING
8. METAL CLADDING	FINISH	METAL CLADDING
9. METAL CLADDING	FINISH	METAL CLADDING
10. METAL CLADDING	FINISH	METAL CLADDING
11. METAL CLADDING	FINISH	METAL CLADDING
12. METAL CLADDING	FINISH	METAL CLADDING
13. METAL CLADDING	FINISH	METAL CLADDING
14. METAL CLADDING	FINISH	METAL CLADDING
15. METAL CLADDING	FINISH	METAL CLADDING
16. METAL CLADDING	FINISH	METAL CLADDING
17. METAL CLADDING	FINISH	METAL CLADDING
18. METAL CLADDING	FINISH	METAL CLADDING
19. METAL CLADDING	FINISH	METAL CLADDING
20. METAL CLADDING	FINISH	METAL CLADDING
21. METAL CLADDING	FINISH	METAL CLADDING
22. METAL CLADDING	FINISH	METAL CLADDING
23. METAL CLADDING	FINISH	METAL CLADDING
24. METAL CLADDING	FINISH	METAL CLADDING
25. METAL CLADDING	FINISH	METAL CLADDING
26. METAL CLADDING	FINISH	METAL CLADDING
27. METAL CLADDING	FINISH	METAL CLADDING
28. METAL CLADDING	FINISH	METAL CLADDING
29. METAL CLADDING	FINISH	METAL CLADDING
30. METAL CLADDING	FINISH	METAL CLADDING
31. METAL CLADDING	FINISH	METAL CLADDING
32. METAL CLADDING	FINISH	METAL CLADDING
33. METAL CLADDING	FINISH	METAL CLADDING
34. METAL CLADDING	FINISH	METAL CLADDING
35. METAL CLADDING	FINISH	METAL CLADDING
36. METAL CLADDING	FINISH	METAL CLADDING
37. METAL CLADDING	FINISH	METAL CLADDING
38. METAL CLADDING	FINISH	METAL CLADDING
39. METAL CLADDING	FINISH	METAL CLADDING
40. METAL CLADDING	FINISH	METAL CLADDING
41. METAL CLADDING	FINISH	METAL CLADDING
42. METAL CLADDING	FINISH	METAL CLADDING
43. METAL CLADDING	FINISH	METAL CLADDING
44. METAL CLADDING	FINISH	METAL CLADDING
45. METAL CLADDING	FINISH	METAL CLADDING
46. METAL CLADDING	FINISH	METAL CLADDING
47. METAL CLADDING	FINISH	METAL CLADDING
48. METAL CLADDING	FINISH	METAL CLADDING
49. METAL CLADDING	FINISH	METAL CLADDING
50. METAL CLADDING	FINISH	METAL CLADDING
51. METAL CLADDING	FINISH	METAL CLADDING
52. METAL CLADDING	FINISH	METAL CLADDING
53. METAL CLADDING	FINISH	METAL CLADDING
54. METAL CLADDING	FINISH	METAL CLADDING
55. METAL CLADDING	FINISH	METAL CLADDING
56. METAL CLADDING	FINISH	METAL CLADDING
57. METAL CLADDING	FINISH	METAL CLADDING
58. METAL CLADDING	FINISH	METAL CLADDING
59. METAL CLADDING	FINISH	METAL CLADDING
60. METAL CLADDING	FINISH	METAL CLADDING
61. METAL CLADDING	FINISH	METAL CLADDING
62. METAL CLADDING	FINISH	METAL CLADDING
63. METAL CLADDING	FINISH	METAL CLADDING
64. METAL CLADDING	FINISH	METAL CLADDING
65. METAL CLADDING	FINISH	METAL CLADDING
66. METAL CLADDING	FINISH	METAL CLADDING
67. METAL CLADDING	FINISH	METAL CLADDING
68. METAL CLADDING	FINISH	METAL CLADDING
69. METAL CLADDING	FINISH	METAL CLADDING
70. METAL CLADDING	FINISH	METAL CLADDING
71. METAL CLADDING	FINISH	METAL CLADDING
72. METAL CLADDING	FINISH	METAL CLADDING
73. METAL CLADDING	FINISH	METAL CLADDING
74. METAL CLADDING	FINISH	METAL CLADDING
75. METAL CLADDING	FINISH	METAL CLADDING
76. METAL CLADDING	FINISH	METAL CLADDING
77. METAL CLADDING	FINISH	METAL CLADDING
78. METAL CLADDING	FINISH	METAL CLADDING
79. METAL CLADDING	FINISH	METAL CLADDING
80. METAL CLADDING	FINISH	METAL CLADDING
81. METAL CLADDING	FINISH	METAL CLADDING
82. METAL CLADDING	FINISH	METAL CLADDING
83. METAL CLADDING	FINISH	METAL CLADDING
84. METAL CLADDING	FINISH	METAL CLADDING
85. METAL CLADDING	FINISH	METAL CLADDING
86. METAL CLADDING	FINISH	METAL CLADDING
87. METAL CLADDING	FINISH	METAL CLADDING
88. METAL CLADDING	FINISH	METAL CLADDING
89. METAL CLADDING	FINISH	METAL CLADDING
90. METAL CLADDING	FINISH	METAL CLADDING
91. METAL CLADDING	FINISH	METAL CLADDING
92. METAL CLADDING	FINISH	METAL CLADDING
93. METAL CLADDING	FINISH	METAL CLADDING
94. METAL CLADDING	FINISH	METAL CLADDING
95. METAL CLADDING	FINISH	METAL CLADDING
96. METAL CLADDING	FINISH	METAL CLADDING
97. METAL CLADDING	FINISH	METAL CLADDING
98. METAL CLADDING	FINISH	METAL CLADDING
99. METAL CLADDING	FINISH	METAL CLADDING
100. METAL CLADDING	FINISH	METAL CLADDING



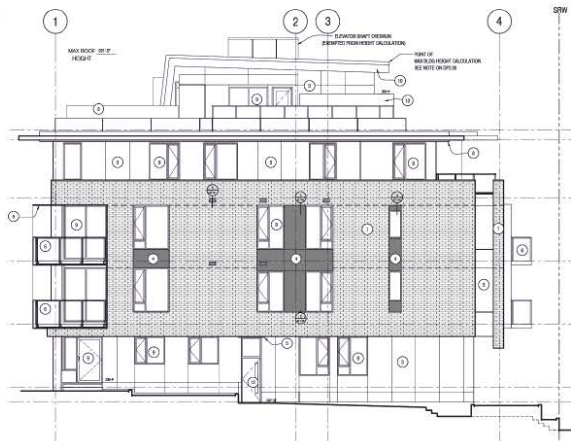
1 North Elevation
SCALE 1/8" = 1'-0"



2 West Elevation
SCALE 1/8" = 1'-0"



3 South Elevation
SCALE 1/8" = 1'-0"



4 East Elevation
SCALE 1/8" = 1'-0"



Aragon ARAGON

1000 W. Lake
Tallahassee, FL
32309

NO.	DESCRIPTION	DATE	BY
1	Issue for Review	08/16/2021	AR
2	Issue for Review	08/16/2021	AR
3	Issue for Review	08/16/2021	AR
4	Issue for Review	08/16/2021	AR
5	Issue for Review	08/16/2021	AR

REVISIONS: DATE: BY:

Copyright reserved. These drawings and the design are not to be used for any other project without the written consent of RWA Architects, Inc. All rights reserved.



Cambie Station
1000 W. Lake, Tallahassee, FL

Apartment Elevations

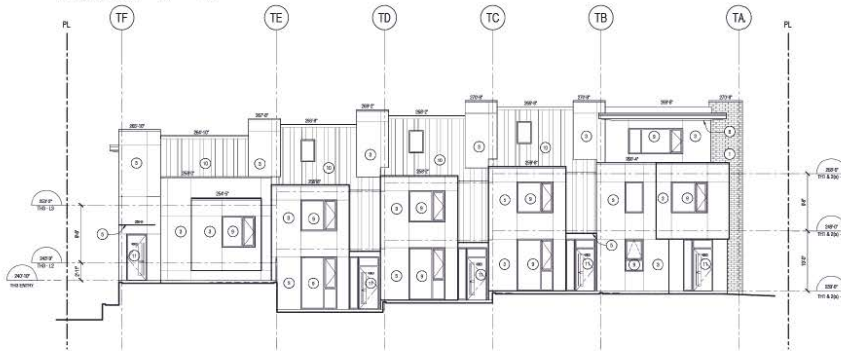
SCALE: SHEET NO: **A3.01**

Issued for DP Re-submission - Aug 16, 2021

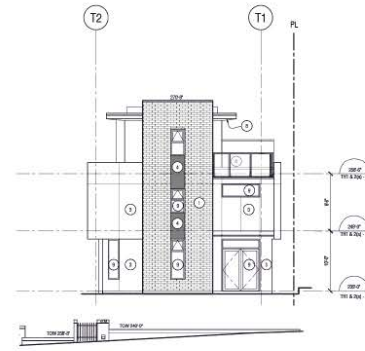
1806

MATERIAL

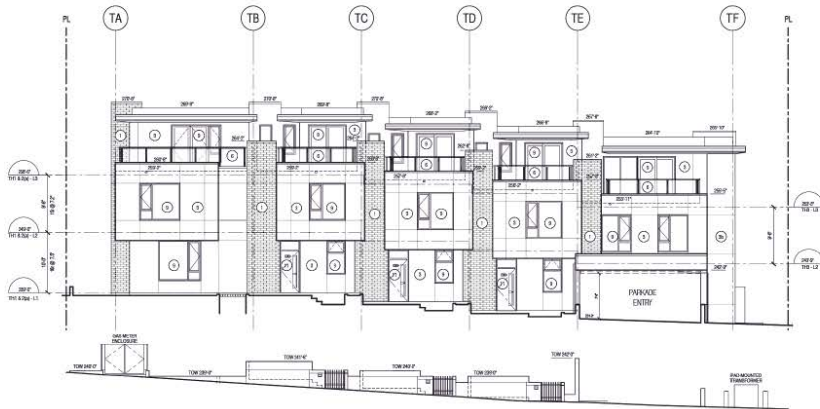
1	CONCRETE	CONCRETE	CONCRETE
2	METAL CLADDING	METAL	METAL CLADDING
3	CONCRETE PANEL	METAL	METAL
4	CONCRETE PANEL	METAL	METAL
5	METAL CLADDING	METAL	METAL
6	METAL CLADDING	METAL	METAL
7	METAL CLADDING	METAL	METAL
8	METAL CLADDING	METAL	METAL
9	METAL CLADDING	METAL	METAL
10	METAL CLADDING	METAL	METAL
11	METAL CLADDING	METAL	METAL
12	METAL CLADDING	METAL	METAL
13	METAL CLADDING	METAL	METAL
14	METAL CLADDING	METAL	METAL
15	METAL CLADDING	METAL	METAL
16	METAL CLADDING	METAL	METAL
17	METAL CLADDING	METAL	METAL



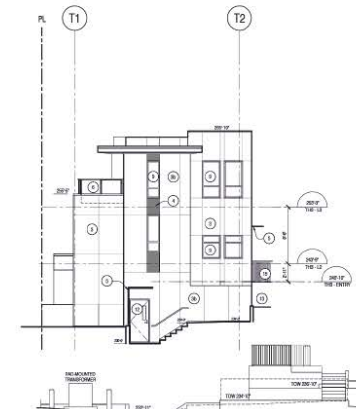
1 North Elevation
SCALE: 1/8" = 1'-0"



2 West Elevation
SCALE: 1/8" = 1'-0"



3 South Elevation
SCALE: 1/8" = 1'-0"



4 East Elevation
SCALE: 1/8" = 1'-0"



CLIENT
Aragon ARAGON

1000 W 1st Ave
Vancouver, BC
V6J 1G1

NO.	DESCRIPTION	DATE	BY
1	Issue for Review	2021-08-16	AR
2	Issue for Review	2021-08-16	AR
3	Issue for Review	2021-08-16	AR
4	Issue for Review	2021-08-16	AR
5	Issue for Review	2021-08-16	AR
6	Issue for Review	2021-08-16	AR
7	Issue for Review	2021-08-16	AR
8	Issue for Review	2021-08-16	AR
9	Issue for Review	2021-08-16	AR
10	Issue for Review	2021-08-16	AR
11	Issue for Review	2021-08-16	AR
12	Issue for Review	2021-08-16	AR
13	Issue for Review	2021-08-16	AR
14	Issue for Review	2021-08-16	AR
15	Issue for Review	2021-08-16	AR
16	Issue for Review	2021-08-16	AR
17	Issue for Review	2021-08-16	AR
18	Issue for Review	2021-08-16	AR
19	Issue for Review	2021-08-16	AR
20	Issue for Review	2021-08-16	AR
21	Issue for Review	2021-08-16	AR
22	Issue for Review	2021-08-16	AR
23	Issue for Review	2021-08-16	AR
24	Issue for Review	2021-08-16	AR
25	Issue for Review	2021-08-16	AR
26	Issue for Review	2021-08-16	AR
27	Issue for Review	2021-08-16	AR
28	Issue for Review	2021-08-16	AR
29	Issue for Review	2021-08-16	AR
30	Issue for Review	2021-08-16	AR
31	Issue for Review	2021-08-16	AR
32	Issue for Review	2021-08-16	AR
33	Issue for Review	2021-08-16	AR
34	Issue for Review	2021-08-16	AR
35	Issue for Review	2021-08-16	AR
36	Issue for Review	2021-08-16	AR
37	Issue for Review	2021-08-16	AR
38	Issue for Review	2021-08-16	AR
39	Issue for Review	2021-08-16	AR
40	Issue for Review	2021-08-16	AR
41	Issue for Review	2021-08-16	AR
42	Issue for Review	2021-08-16	AR
43	Issue for Review	2021-08-16	AR
44	Issue for Review	2021-08-16	AR
45	Issue for Review	2021-08-16	AR
46	Issue for Review	2021-08-16	AR
47	Issue for Review	2021-08-16	AR
48	Issue for Review	2021-08-16	AR
49	Issue for Review	2021-08-16	AR
50	Issue for Review	2021-08-16	AR

PROVISION (last name) DATE RECEIVED BY

Copyright reserved. These drawings and the design are the property of RWA Architecture. No part of these drawings may be reproduced, stored in a retrieval system, or transmitted in any form or by any means, electronic, mechanical, photocopying, recording, or by any information storage and retrieval system, without the prior written permission of RWA Architecture. These drawings are for the construction of the project only and are not to be used for any other purpose.

Issued for DP Re-submission - Aug 16, 2021



PROJECT TITLE
Cambie Station
1000 West 1st Avenue, Vancouver, BC

PROJECT TITLE
Townhouse Elevations

SCALE: 1/8" = 1'-0"
PROJECT NO: **A3.02**

1806