

MOTION

A.2

2. Approval of Form of Development – 349 East 6th Avenue

THAT the form of development for this portion of the site known as 349 E 6th Avenue be approved generally as illustrated in the Development Application Number DP-2020-00884, prepared by IBI Group, and received, May 12, 2021, provided that the Director of Planning may impose conditions and approve design changes which would not adversely affect either the development character of the site or adjacent properties.

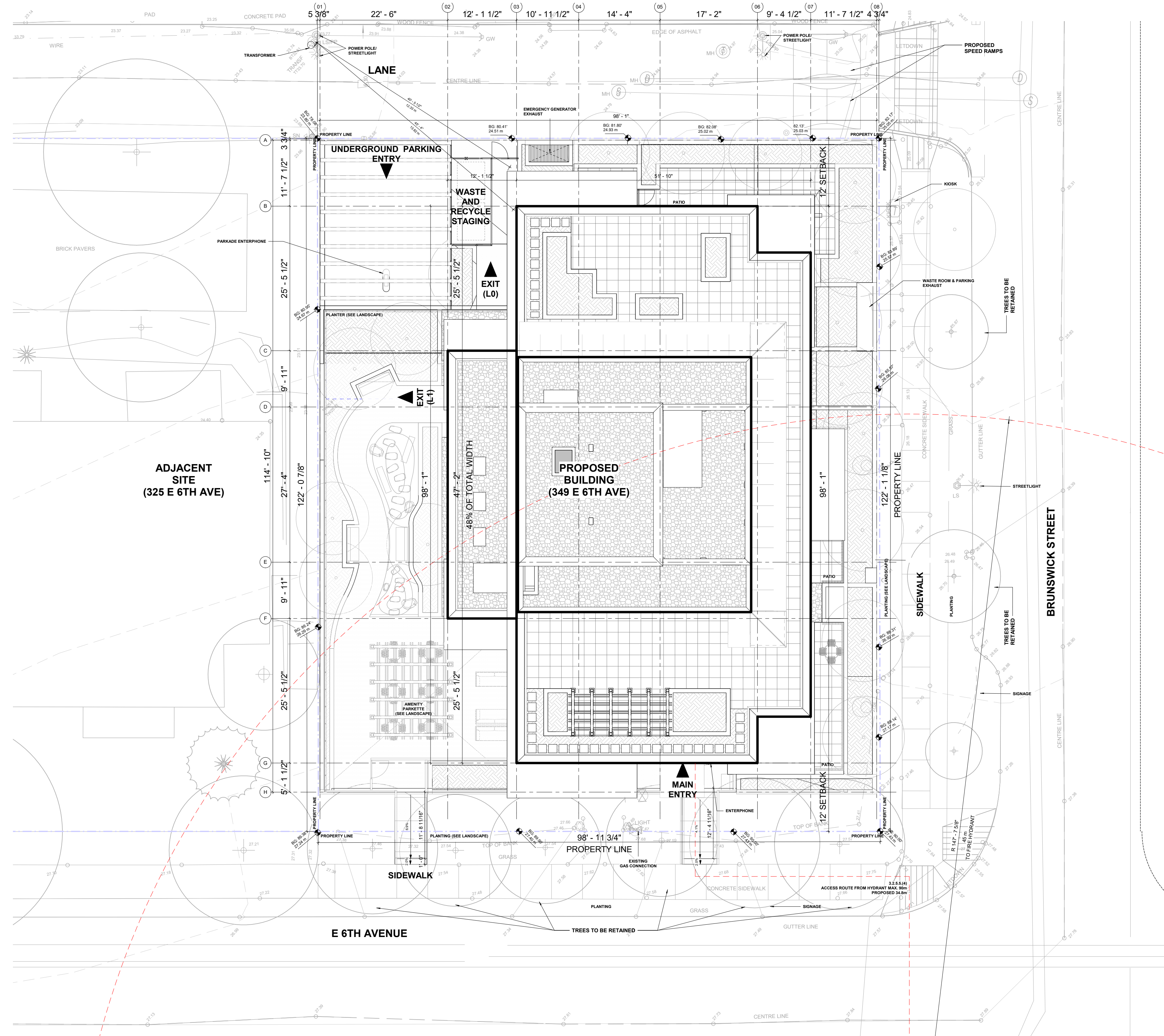
* * * * *

Additional Background Information:

<https://shapeyourcity.ca/349-e-6-ave>

SITE PLAN

CIVIC ADDRESS: 349 EAST 6TH AVE.
 SITE AREA: 12,081 SF
 LEGAL DESCRIPTION: LOT VR 259, BLK. 28, D.L. 200A, PLAN VAS259



349 EAST 6TH AVENUE, VANCOUVER, BC

This document has been digitally certified with digital certificate and encryption technology authorized by the Architectural Institute of BC and the Engineers and Geoscientists BC. The authoritative original has been transmitted to you in digital form. Any printed version can be relied upon as a true copy of the original when supplied by the architect, bearing images of the professional seal and digital certificate, or when printed from the digitally-certified electronic file provided by the architect.

NO	DESCRIPTION
1	BRICK
2	WINDOW WALL GLAZING
3	SPANDREL GLASS
4	ALUMINUM CLEAR GLASS GUARDRAIL
5	WINDOW MULLIONS
6	PAINTED BALCONIES
7	SUNSHADE
8	CANOPY
9	TRANSLUCENT GLASS
10	MECHANICAL LOUVERS



SC. 3/32"=1'-0" / ARCH D



349 EAST 6TH AVENUE, VANCOUVER, BC

This document has been digitally certified with digital certificate and encryption technology authorized by the Architectural Institute of BC and the Engineers and Geoscientists BC. The authoritative original has been transmitted to you in digital form. Any printed version can be relied upon as a true copy of the original when supplied by the architect, bearing images of the professional seal and digital certificate, or when printed from the digitally-certified electronic file provided by the architect.

NO	DESCRIPTION
1	BRICK
2	WINDOW WALL GLAZING
3	SPANDREL GLASS
4	ALUMINUM CLEAR GLASS GUARDRAIL
5	WINDOW MULLIONS
6	PAINTED BALCONIES
7	SUNSHADE
8	CANOPY
9	TRANSLUCENT GLASS
10	MECHANICAL LOUVERS



SC. 3/32"=1'-0" / ARCH D



349 EAST 6TH AVENUE, VANCOUVER, BC

This document has been digitally certified with digital certificate and encryption technology authorized by the Architectural Institute of BC and the Engineers and Geoscientists BC. The authoritative original has been transmitted to you in digital form. Any printed version can be relied upon as a true copy of the original when supplied by the architect, bearing images of the professional seal and digital certificate, or when printed from the digitally-certified electronic file provided by the architect.

NO	DESCRIPTION
1	BRICK
2	WINDOW WALL GLAZING
3	SPANDREL GLASS
4	ALUMINUM CLEAR GLASS GUARDRAIL
5	WINDOW MULLIONS
6	PAINTED BALCONIES
7	SUNSHADE
8	CANOPY
9	TRANSLUCENT GLASS
10	MECHANICAL LOUVERS



SC. 3/32"=1'-0" / ARCH D



349 EAST 6TH AVENUE, VANCOUVER, BC

This document has been digitally certified with digital certificate and encryption technology authorized by the Architectural Institute of BC and the Engineers and Geoscientists BC. The authoritative original has been transmitted to you in digital form. Any printed version can be relied upon as a true copy of the original when supplied by the architect, bearing images of the professional seal and digital certificate, or when printed from the digitally-certified electronic file provided by the architect.

NO	DESCRIPTION
1	BRICK
2	WINDOW WALL GLAZING
3	SPANDREL GLASS
4	ALUMINUM CLEAR GLASS GUARDRAIL
5	WINDOW MULLIONS
6	PAINTED BALCONIES
7	SUNSHADE
8	CANOPY
9	TRANSLUCENT GLASS
10	MECHANICAL LOUVERS



SC. 3/32"=1'-0" / ARCH D



349 EAST 6TH AVENUE, VANCOUVER, BC

This document has been digitally certified with digital certificate and encryption technology authorized by the Architectural Institute of BC and the Engineers and Geoscientists BC. The authoritative original has been transmitted to you in digital form. Any printed version can be relied upon as a true copy of the original when supplied by the architect, bearing images of the professional seal and digital certificate, or when printed from the digitally-certified electronic file provided by the architect.