

An aerial photograph of a coastal town, likely Victoria, British Columbia. In the foreground, there's a residential neighborhood with various houses and trees. A large bridge, the Victoria Harbour Bridge, spans the water in the middle ground. The background features a range of green mountains under a blue sky with scattered white clouds. A semi-transparent dark blue overlay covers the left side of the image, containing the word 'Introduction' in white text.

Introduction



metrovancover | METRO 2050

Draft *Metro 2050*

UPDATE TO THE REGIONAL GROWTH STRATEGY

Jerry Dobrovolny

Commissioner / CAO, Metro Vancouver Regional District

Heather McNeill

General Manager, Regional Planning and Housing Services

City of Vancouver Council | November 16, 2021

metrovancover

OUTLINE

Objective: To provide an overview of the content in *Metro 2050* and help member jurisdiction prepare to provide comments by November 26, 2021

- Regional Growth Strategies
- Scope of Update
- Overview of *Metro 2050*
 - Projections
 - 5 Goals
 - What's Proposed
- Providing Comment



REGIONAL GROWTH STRATEGIES

Our collective vision for how to manage and shape long-term growth



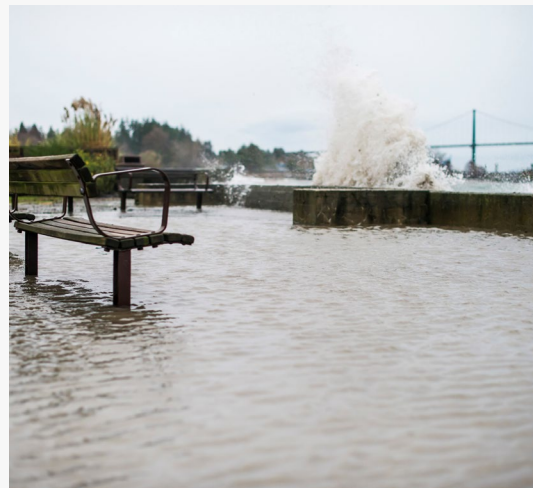
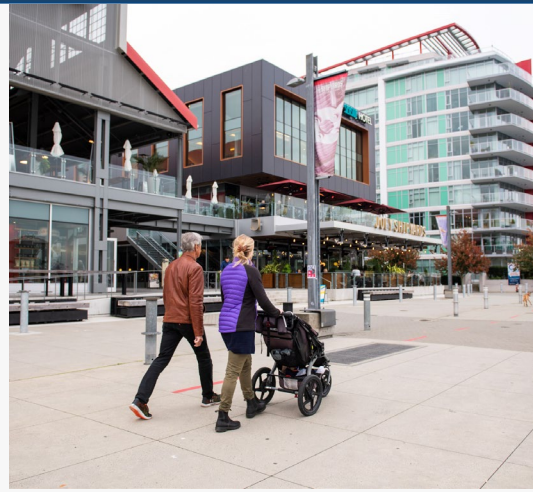
2011



- Long-range plan
- Defined in *Local Government Act*
- Manage growth
- Strong history of regional planning
- Signed on to by all member jurisdictions

SCOPE OF THE UPDATE

- Build on success
- Align with *Transport 2050*
- Apply what we've learned
- Respond to critical challenges



ENGAGEMENT PROCESS

2019-2020

- Engagement with municipalities, regional agencies, First Nations and TransLink
- 11 Themed Policy Reviews
- Public Dialogue Events
- Online Engagement & Webinar
- Regional Planning Committee and MVRD Board

2021

- Engagement with municipalities, regional agencies, First Nations and TransLink
- M2050 Intergovernmental Advisory Committee
- Regional Planning Committee and MVRD Board
- Comment Period



DRAFT *METRO 2050*

- Builds on *Metro 2040* content
- 2 years of engagement
- Changes respond to municipal and other requests
- Strong input from Intergovernmental Advisory Committee
- Board distributed by letter in July
- Actions for Metro Vancouver, Member Jurisdictions and TransLink



REGIONAL GROWTH PROJECTIONS

Forecasting our region's population in 2050

- Projections / not targets: intended to provide information to planners, engineers and decision makers
- ~35,000 new residents / year
- Scenario based model uses trends, immigration, migration & natural increase with +/- 15% range built in
- Sub-regional for *Metro 2050*

	2020	2050
Population	2.75 million	3.8 million
Homes	1.1 million	1.6 million
Jobs	1.4 million	1.9 million

REGIONAL GROWTH PROJECTIONS

- Completing sub-regional profiles to provide municipal scale data to members – outside of *Metro 2050*
- Consistent set of population, housing and employment projections to member jurisdictions, TransLink, Utilities, and other regional interests
- Supports capital infrastructure and planning throughout the region



An aerial photograph of the Metro Vancouver region, showing the city of Vancouver, its surrounding suburbs, and the surrounding mountains and water bodies. The image is used as a background for the Metro 2050 goals.

metrovancouver | METRO 2050

GOAL

1

Create a Compact Urban Area

GOAL

2

Support a Sustainable Economy

GOAL

3

Protect the Environment and Respond to
Climate Change and Natural Hazards

GOAL

4

Provide Diverse and Affordable Housing Choices

GOAL

5

Support Sustainable Transportation Choices

WHAT'S PROPOSED?

- Clarity on Urban Centres and Frequent Transit Development Areas – new types
- Stronger alignment of planned locations for growth with transit investment through new tool - 'Major Transit Growth Corridors'
- Target that 15% of new & redeveloped housing in Urban Centres and Frequent Transit Development Areas will be affordable, rental housing
- Policies to encourage transit-oriented affordable housing, increase stock and protect existing non-market rental units
- Stronger protection for Industrial lands; flexibility for residential near rapid transit stations

WHAT'S PROPOSED?

- Stronger climate action, including collective actions to meet greenhouse gas emission reduction targets and prepare for impacts
- Target to protect 50% of land for nature and achieve 40% tree canopy cover within the Urban Containment Boundary
- More explicit integration of equity outcomes
- Emphasis on building relationships with First Nations, incorporating development and planning needs

Regional Targets. *Each member works within local context and contributes what they can towards regional targets.*



OPPORTUNITY FOR COMMENT

- New opportunity in advance of bylaw process
- Written comments by Council resolution by November 26, 2021
- Online Feedback Form for residents, businesses, others
- Public Webinar
- Social Media Promotions
- Intergovernmental Advisory Committee

NEXT STEPS

- Comment period (July - Nov)
- Re-assess process (Dec)
- First Bylaw Reading (Jan / Feb)
- Public Hearing (Feb / Mar)
- Signatory Acceptance (Apr - Jun)
- Final Bylaw Reading (Jul)



An aerial photograph of the Metro Vancouver region, showing the city of Vancouver, its surrounding suburbs, and the surrounding water bodies and mountains. The image is used as a background for the top half of the slide.

metrovancover | METRO 2050

PLANNING NOW FOR FUTURE GENERATIONS

Thank you

metrovancover
Together we make our region strong