

## RESOLUTION

### **4. Resolution - Closure and Exchange of a Portion of Road Adjacent to 1002 Station Street, Lot 1, District Lot 2037, Group 1, New Westminster District, Plan EPP105034 ("Lot 1")**

THAT WHEREAS

1. The City of Vancouver is the owner of all the streets and lanes lying within the limits of the City of Vancouver;
2. There is a proposal to redevelop [PID: 031-266-932] Lot 1, District Lot 2037, Group 1, New Westminster District Plan EPP105034 ("Lot 1");
3. The proposal requires the closure of a portion of Gore Avenue abutting Lot 1 District Lot 2037 Group 1 New Westminster District Plan EPP105034, dedicated by the deposit of Plan EPP105034 on December 19, 2020;
4. The said portion of road to be closed is no longer required for municipal purposes;
5. The dedication as road of a portion of Lot 1 is required by the City for road purposes;
6. The said portion of road to be closed will be conveyed to the abutting owner and subdivided with Lot 1 to dedicate road to the City and to form a single parcel.

THEREFORE BE IT RESOLVED THAT all that portion of road adjacent to the said Lot 1, the same as shown in heavy outline on the Reference Plan prepared by Roland Bircher, B.C.L.S., completed on the 12<sup>th</sup> day of November, 2021, and numbered Plan EPP116058, a copy of which is attached hereto, be closed, stopped-up and conveyed to the owner of the said Lot 1;

BE IT FURTHER RESOLVED THAT the said portion of road to be closed is to be subdivided with the said Lot 1 to dedicate road to the City and to form a single parcel, as shown within the heavy bold outline on the Subdivision Plan prepared by Roland Bircher, B.C.L.S., completed on the 12<sup>th</sup> day of November, 2021, and numbered Plan EPP116059, a copy of which is attached hereto, to the satisfaction of the Director of Legal Services and the Approving Officer.

\* \* \* \* \*

REFERENCE PLAN TO ACCOMPANY RESOLUTION OF THE COUNCIL OF THE CITY OF VANCOUVER STOPPING-UP PORTION OF ROAD DEDICATED BY THE DEPOSIT OF PLAN EPP105034 LYING ADJACENT TO LOT 1, DISTRICT LOT 2037, GROUP 1, NEW WESTMINSTER DISTRICT, PLAN EPP105034

PURSUANT TO SECTION 291, VANCOUVER CHARTER BCGS 92G.025

SCALE 1:250  
0 5 10 15  
ALL DISTANCES ARE IN METRES  
THE INTENDED PLOT SIZE OF THIS PLAN IS 864mm IN WIDTH BY 1120mm IN HEIGHT (E SIZE) WHEN PLOTTED AT A SCALE OF 1:250

INTEGRATED SURVEY AREA NO. 31 (VANCOUVER), NAD83(CRS)4.0.0.BC.1.MVRG  
GRID BEARINGS ARE DERIVED FROM OBSERVATIONS BETWEEN GEODETIC CONTROL MONUMENTS V-1595 AND V-3734 AND ARE REFERRED TO THE CENTRAL MERIDIAN OF UTM ZONE 10N.  
THIS PLAN SHOWS HORIZONTAL GROUND-LEVEL DISTANCES UNLESS OTHERWISE SPECIFIED. TO COMPUTE GRID DISTANCES, MULTIPLY GROUND-LEVEL DISTANCES BY THE COMBINED FACTOR OF 0.9996226 WHICH HAS BEEN DERIVED FROM GEODETIC CONTROL MONUMENT V-3734.  
THE UTM COORDINATES AND ESTIMATED ABSOLUTE ACCURACY ACHIEVED ARE DERIVED FROM THE MASCOY PUBLISHED COORDINATES AND STANDARD DEVIATIONS FOR GEODETIC CONTROL MONUMENTS V-1595 AND V-3734.

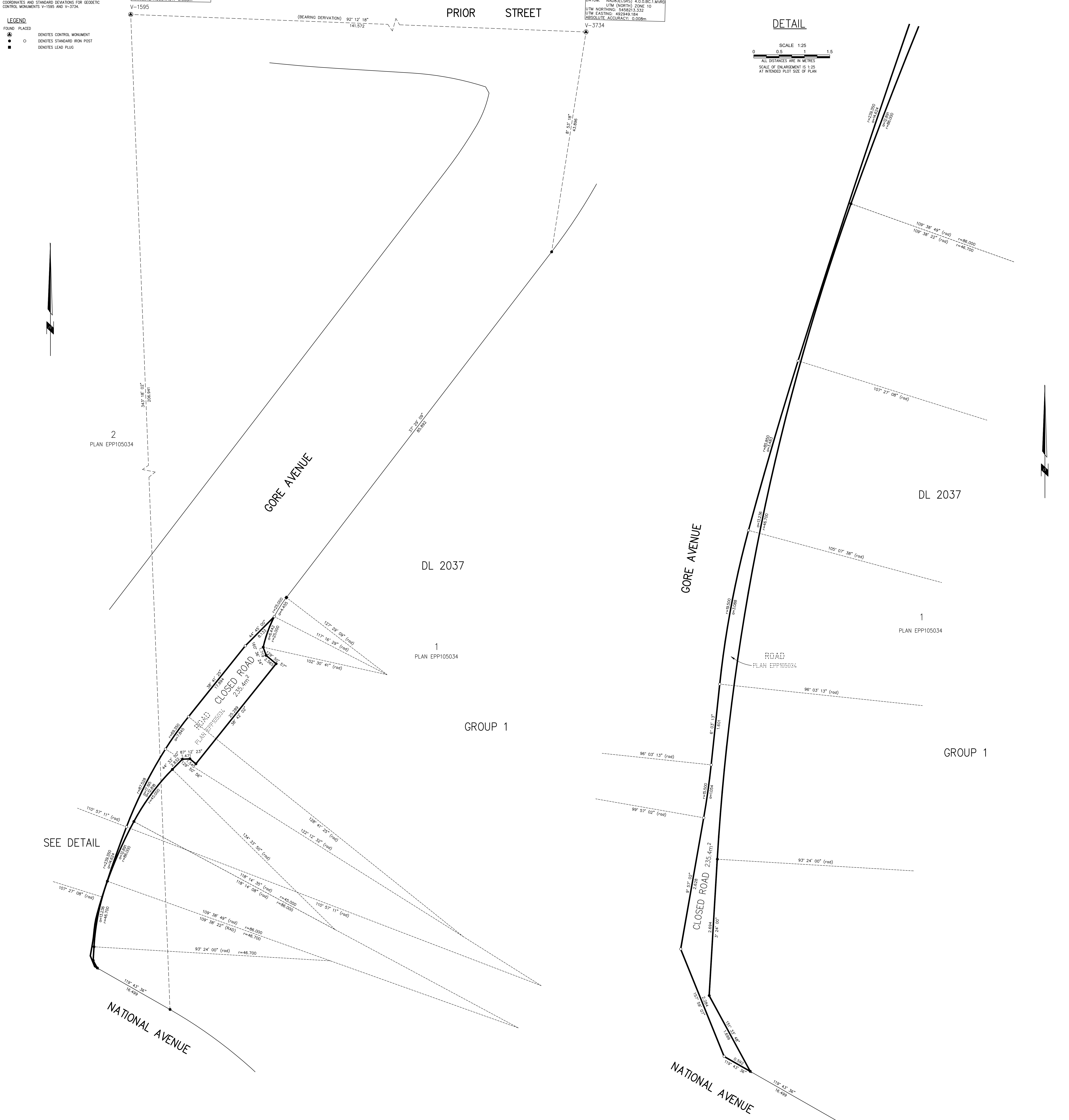
LEGEND  
FOUND PLACED  
● DENOTES CONTROL MONUMENT  
○ DENOTES STANDARD IRON POST  
■ DENOTES LEAD PLUG

DATUM: NAD83(CRS) 4.0.0.BC.1.MVRG  
UTM (NORTH) ZONE 10  
UTM NORTHING: 5458216.777  
UTM EASTING: 4929077.713  
ABSOLUTE ACCURACY: 0.008m

DATUM: NAD83(CRS) 4.0.0.BC.1.MVRG  
UTM (NORTH) ZONE 10  
UTM NORTHING: 5458216.777  
UTM EASTING: 4929077.713  
ABSOLUTE ACCURACY: 0.008m

DETAIL

SCALE 1:25  
0 0.5 1 1.5  
ALL DISTANCES ARE IN METRES  
SCALE OF ENLARGEMENT IS 1:25 AT INTENDED PLOT SIZE OF PLAN



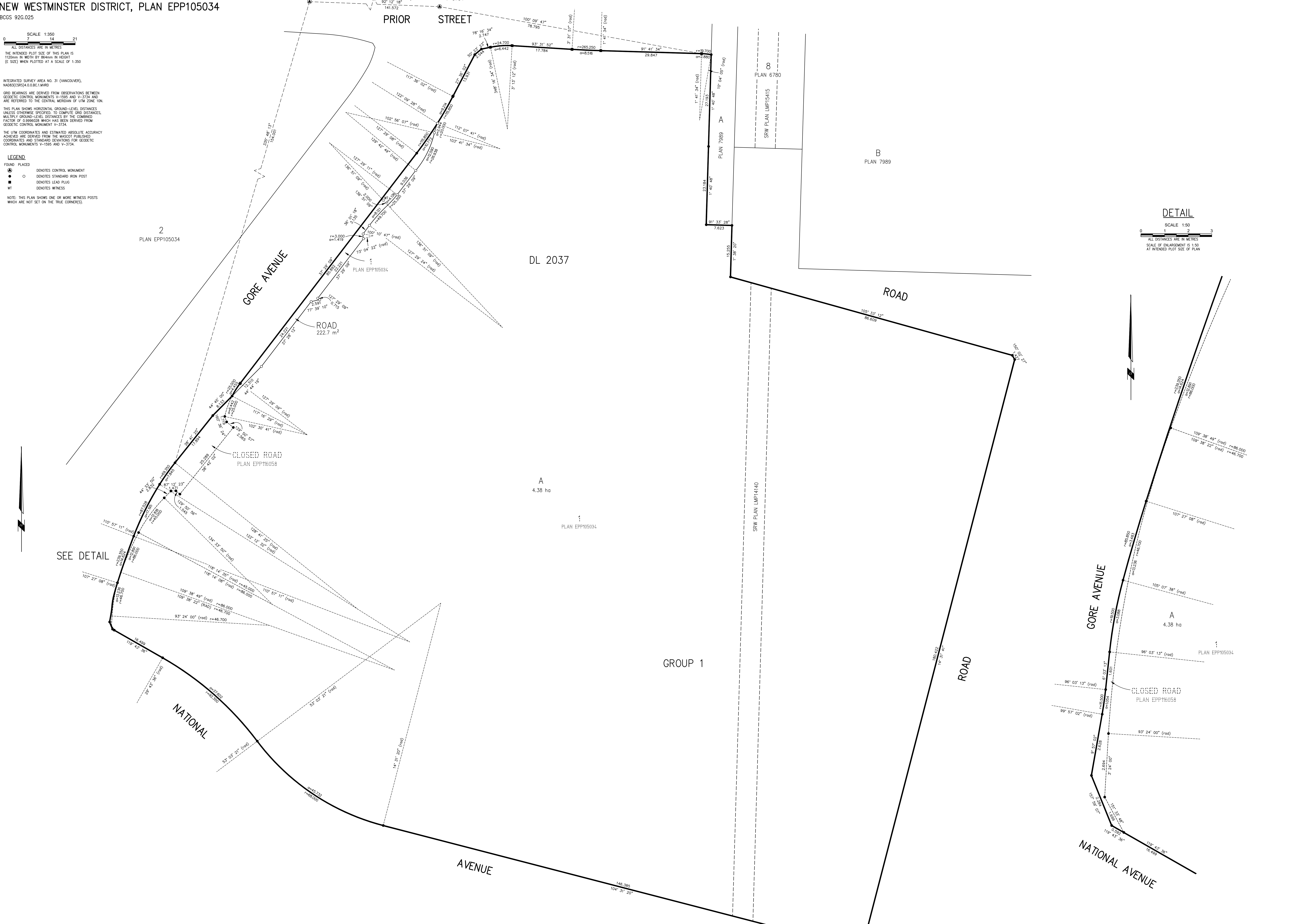
SUBDIVISION PLAN OF  
CLOSED ROAD, PLAN EPP116058, AND  
LOT 1, DISTRICT LOT 2037, GROUP 1,  
NEW WESTMINSTER DISTRICT, PLAN EPP105034  
BCGS 92G.025

SCALE 1:350  
0 7 14 21  
ALL DISTANCES ARE IN METRES  
THE INTENDED PLOT SIZE OF THIS PLAN IS  
1120mm IN WIDTH BY 840mm IN HEIGHT  
(E SIZE) WHEN PLOTTED AT A SCALE OF 1:350

INTEGRATED SURVEY AREA NO. 31 (VANCOUVER),  
NAD83(CSRS)4.0.0.BC.1.MVRD  
GRID BEARINGS ARE DERIVED FROM OBSERVATIONS BETWEEN  
GEODETIC CONTROL MONUMENTS V-1595 AND V-3734 AND  
ARE REFERRED TO THE CENTRAL MERIDIAN OF UTM ZONE 10N.  
UNLESS OTHERWISE SPECIFIED, TO COMPUTE GRID DISTANCES,  
MULTIPLY GROUND-LEVEL DISTANCES BY THE COMBINED  
FACTOR OF 0.9996028 WHICH HAS BEEN DERIVED FROM  
GEODETIC CONTROL MONUMENT V-3734.  
THE UTM COORDINATES AND ESTIMATED ABSOLUTE ACCURACY  
ACHIEVED ARE DERIVED FROM THE MASCO PUBLISHED  
COORDINATES AND STANDARD DEVIATIONS FOR GEODETIC  
CONTROL MONUMENTS V-1595 AND V-3734.

LEGEND  
FOUND PLACED  
● DENOTES CONTROL MONUMENT  
○ DENOTES STANDARD IRON POST  
■ DENOTES LEAD PLUG  
WT DENOTES WITNESS  
NOTE: THIS PLAN SHOWS ONE OR MORE WITNESS POSTS  
WHICH ARE NOT SET ON THE TRUE CORNERS(S).

DATUM: NAD83(CSRS) 4.0.0.BC.1.MVRD  
UTM (NORTH) ZONE 10  
UTM NORTHING: 5498218.777  
UTM EASTING: 492949.184  
ABSOLUTE ACCURACY: 0.008m  
V-1595  
(BEARING DERIVATION)  
92° 12' 18"  
141.572  
V-3734  
UTM (NORTH) ZONE 10  
UTM NORTHING: 5498213.332  
UTM EASTING: 492949.184  
ABSOLUTE ACCURACY: 0.008m



DETAIL  
SCALE 1:50  
0 1 2 3  
ALL DISTANCES ARE IN METRES  
SCALE OF ENLARGEMENT IS 1:50  
AT INTENDED PLOT SIZE OF PLAN

