

MOTION

6. **Approval of Form of Development: 6161 Cambie Street**

THAT the form of development for this portion of the site known as 6161 Cambie Street be approved generally as illustrated in the Development Application Number DP-2019-00243, prepared by McFarland Marceau Architects Ltd., and stamped "Received, Community Services Group, Development Services", on March 19, 2021, provided that the Director of Planning may impose conditions and approve design changes which would not adversely affect either the development character of the site or adjacent properties.

* * * * *

Additional Background Information:

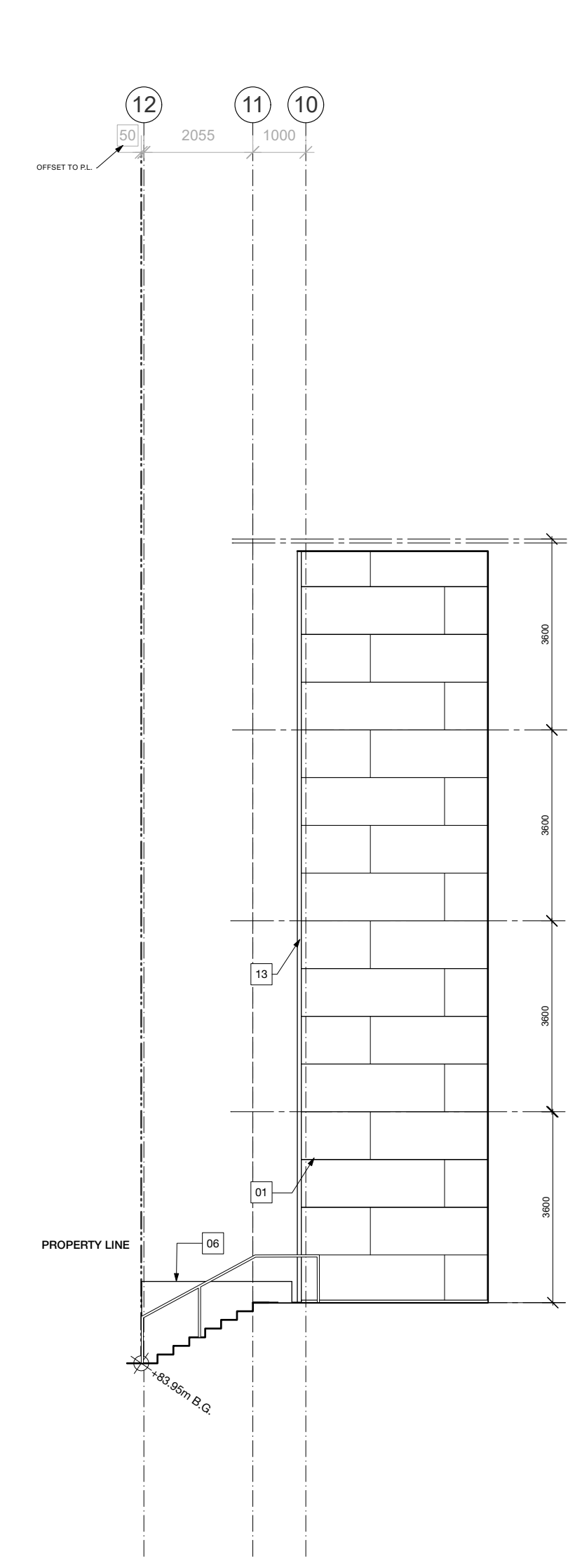
<https://rezoning.vancouver.ca/applications/6161cambiest/index.htm>

NOTES

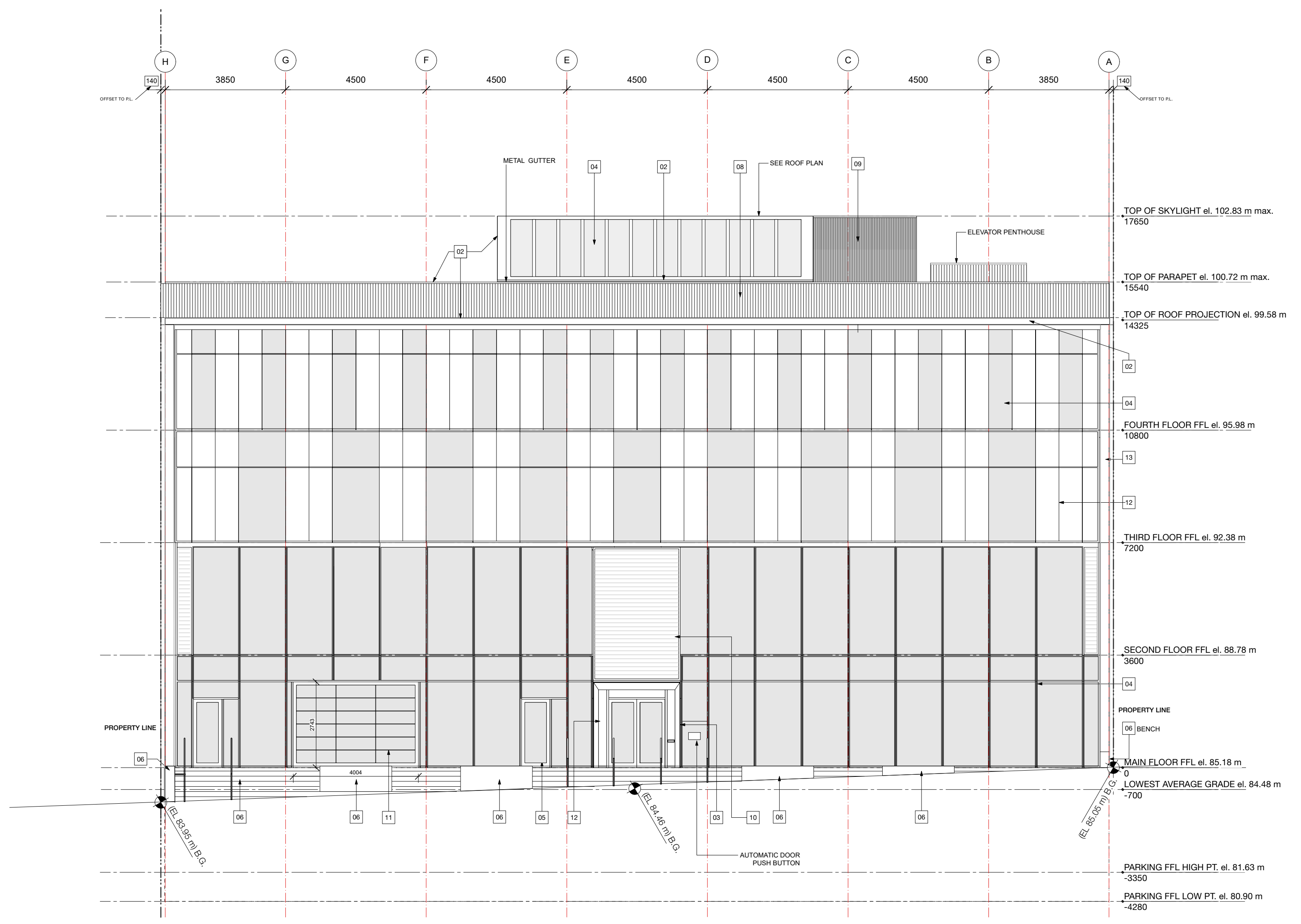
1. Any exterior signage that may be shown is for reference only and is not approved under this Development Permit. Signage is regulated by the Sign By-Law and requires separate approval. The owner(s) assumes responsibility to achieve compliance with the Sign By-Law and obtain the required sign permits.

MATERIALS LEGEND

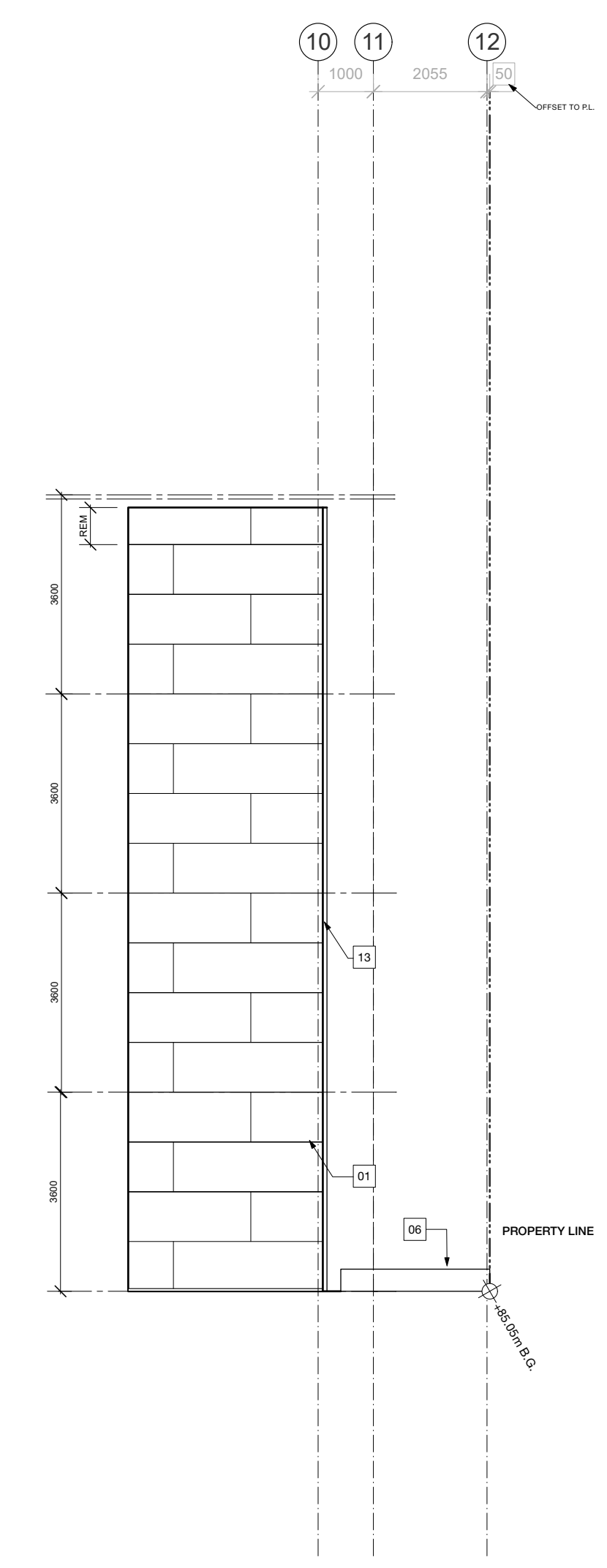
- 01 PHENOLIC PANEL CLADDING
- 02 METAL FLASHING OR PANEL
- 03 PAINTED METAL COWLING
- 04 ANODIZED ALUMINUM GLAZING SYSTEM
- 05 ANODIZED ALUMINUM ENTRANCE
- 06 CONCRETE
- 07 PAINT
- 08 CORRUGATED METAL CLADDING
- 09 METAL GRILLE / SCREEN
- 10 MECHANICAL LOUVRE
- 11 ANODIZED ALUMINUM OVERHEAD DOOR
- 12 ANODIZED ALUMINUM PANEL
- 13 STEEL CHANNEL
- 14 CEMENTITIOUS PANEL
- 15 SCUPPER



3 Forecourt South Elevation
Scale: 1:100



2 East Elevation
Scale: 1:100



3 Forecourt North Elevation
Scale: 1:100

0	21-05-19	Prior to Response Submission #2
REV	Y M D	ISSUE
CHECKED BY	PROJECT ID	
CD/MM	1705	
DRAWN BY	CAD FILE NAME	
JA/CB	Alliance 30.rwp	

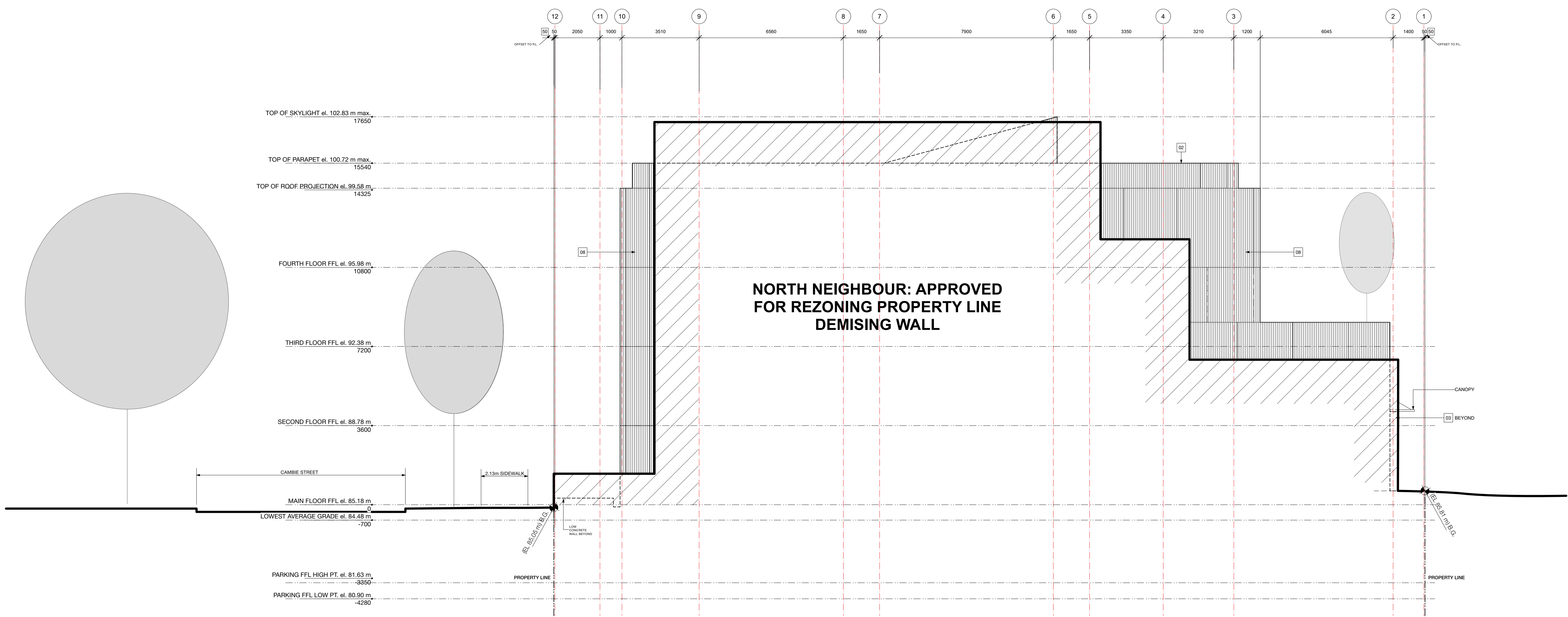
MATERIALS LEGEND

- 01 PHENOLIC PANEL CLADDING
- 02 METAL FLASHING OR PANEL
- 03 PAINTED METAL COWLING
- 04 ANODIZED ALUMINIUM GLAZING SYSTEM
- 05 ANODIZED ALUMINIUM ENTRANCE
- 06 CONCRETE
- 07 PAINT
- 08 CORRUGATED METAL CLADDING
- 09 METAL GRILLE / SCREEN
- 10 MECHANICAL LOUVRE
- 11 ANODIZED ALUMINIUM OVERHEAD DOOR
- 12 ANODIZED ALUMINIUM PANEL
- 13 STEEL CHANNEL
- 14 CEMENTITIOUS PANEL
- 15 SCUPPER

McFARLAND MARCEAU
ARCHITECTS LTD.
1980 Piquette Street
Vancouver BC
V5L 0C7
T: 604.253.1115
www.mfma.ca

McFarland Marceau Architects Ltd. including its employees and partners accept no responsibility for the accuracy or use of any information of this drawing pertaining to existing site conditions, existing buildings, structures and utilities. It is the responsibility of the person using this information to verify its accuracy. Should any discrepancy arise between the actual site conditions and the information shown on this drawing, the user shall assume the responsibility.

This drawing, as an instrument of service, is the property of the client. It is to be used only for the project and site specified herein. Any reproduction or use of this drawing without the written consent of the architect is prohibited. The architect assumes no responsibility for any errors or omissions in this drawing, and shall not be held liable for any consequences arising therefrom.



1 North Elevation
Scale: 1:100

Alliance Française De Vancouver
6161 Cambie
Vancouver BC, V5Z 3B2

REV	Y	M	D	ISSUE
01	03	19		Prior to Response Submission #2
CHECKED BY	PROJECT ID			
CDMM	1705			
DRAWN BY	CAD FILE NAME			
JA/CB	Alliance 3d.rvt			

SHEET TITLE
Elevation - North

DRAWING NO.
DP 13

NOTES

Exterior Signage

1. Any exterior signage that may be shown is for reference only and is not approved under this Development Permit. Signage is regulated by the Sign By-Law and requires separate approval. The owner(s) assumes responsibility to achieve compliance with the Sign By-Law and obtain the required sign permits.

MATERIALS LEGEND

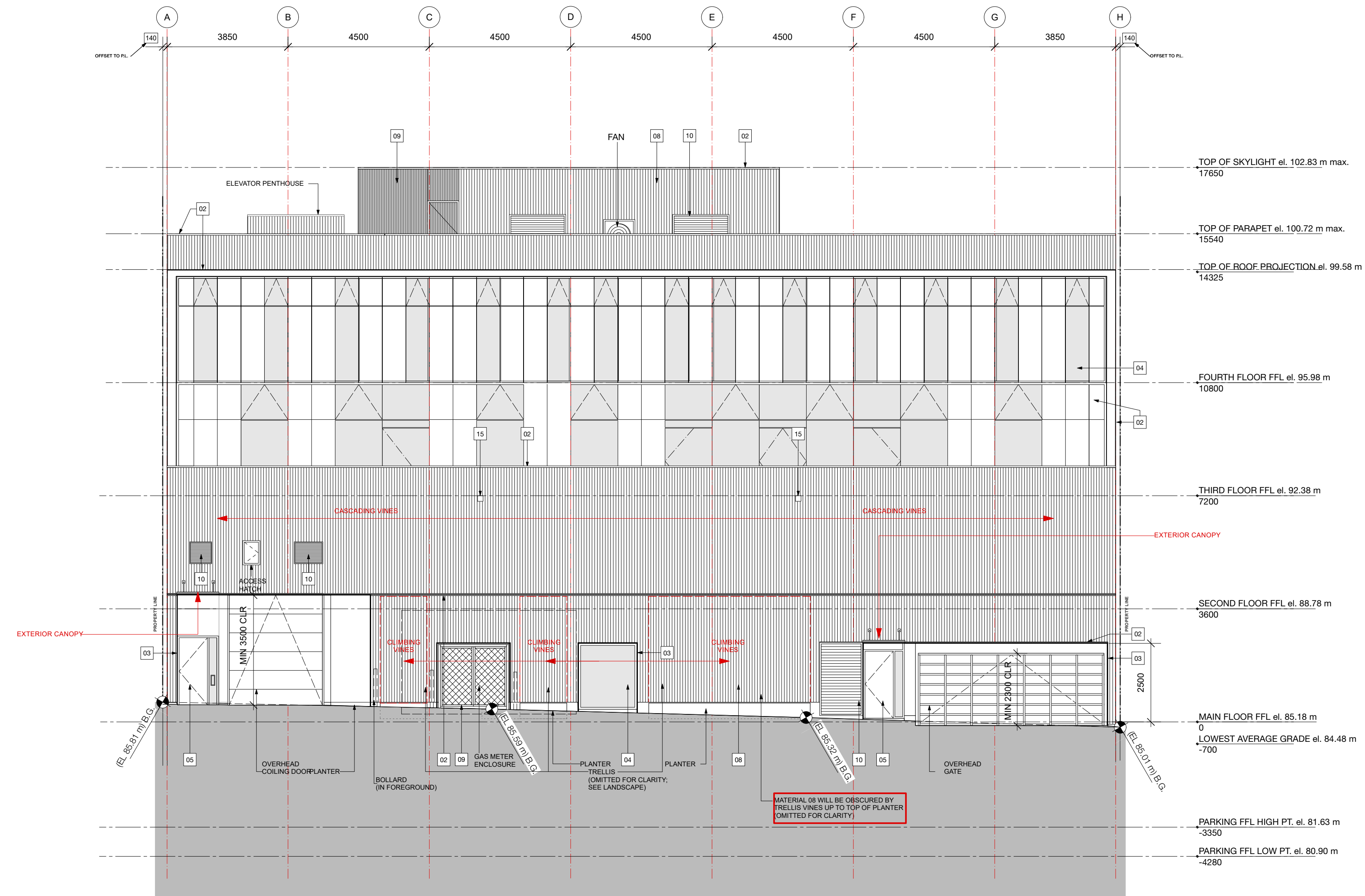
- 01 PHENOLIC PANEL CLADDING
- 02 METAL FLASHING OR PANEL
- 03 PAINTED METAL COWLING
- 04 ANODIZED ALUMINIUM GLAZING SYSTEM
- 05 ANODIZED ALUMINIUM ENTRANCE
- 06 CONCRETE
- 07 PAINT
- 08 CORRUGATED METAL CLADDING
- 09 METAL GRILLE / SCREEN
- 10 MECHANICAL LOUVRE
- 11 ANODIZED ALUMINIUM OVERHEAD DOOR
- 12 ANODIZED ALUMINIUM PANEL
- 13 STEEL CHANNEL
- 14 CEMENTITIOUS PANEL
- 15 SCUPPER

McFARLAND MARCEAU
ARCHITECTS LTD.

1580 Pardon Street
Vancouver BC
V5L 0C7
T: 604.251.1115
www.mfml.ca

McFarland Marceau Architects Ltd. including its employees and agents are not responsible for the accuracy or use of any information of this drawing pertaining to existing site conditions, zoning bylaws, permits and other matters. It is the responsibility of the person using this information to verify its accuracy. Should any discrepancy arise between this drawing and the actual site conditions, the user shall be responsible for the consequences.

This drawing, as an instrument of service, is the property of McFarland Marceau Architects Ltd. and may not be reproduced without the permission and under the restriction that the user shall assume all design and other responsibilities shown on this drawing are for use on the specified project only and shall not be used elsewhere without the permission of the office.



7 West Elevation
Scale: 1:100

Alliance Française De Vancouver
6161 Cambie
Vancouver BC, V5Z 3B2

0	21-03-19	Prior to Response Submission #2
REV	Y M D	ISSUE
CHECKED BY	PROJECT ID	
CD/MM	1705	
DRAWN BY	CAD FILE NAME	
JA/CB	Alliance 30.rwp	

SHEET TITLE
Elevation - West

DRAWING NO.
DP 14

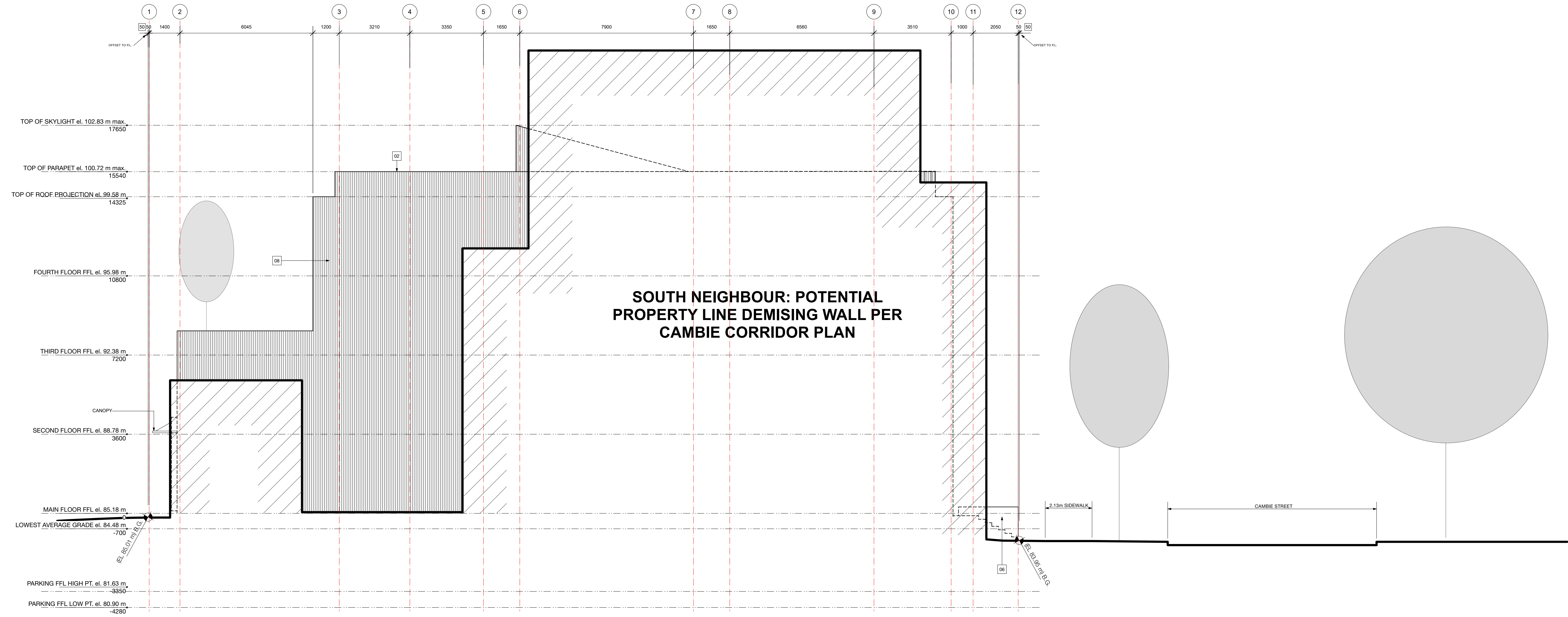
MATERIALS LEGEND	
01	PHENOLIC PANEL CLADDING
02	METAL FLASHING OR PANEL
03	PAINTED METAL COWLING
04	ANODIZED ALUMINIUM GLAZING SYSTEM
05	ANODIZED ALUMINIUM ENTRANCE
06	CONCRETE
07	PAINT
08	CORRUGATED METAL CLADDING
09	METAL GRILLE / SCREEN
10	MECHANICAL LOUVRE
11	ANODIZED ALUMINIUM OVERHEAD DOOR
12	ANODIZED ALUMINIUM PANEL
13	STEEL CHANNEL
14	CEMENTITIOUS PANEL
15	SCUPPER

McFARLAND MARCEAU
ARCHITECTS LTD.

1980 Piquette Street
Vancouver BC
V5L 0C7
T: 604.251.1115
www.mfma.ca

McFarland Marceau Architects Ltd. including its employees and partners are not responsible for the accuracy or use of any information of this drawing pertaining to existing site conditions, zoning bylaws, permits and other matters. It is the responsibility of the person using this information to verify its accuracy. Should any discrepancy arise between this drawing and the actual site conditions, the user shall be responsible for the same. No warranty is made.

This drawing, as an instrument of service, is the property of McFarland Marceau Architects Ltd. and may not be reproduced without their permission and where the reproduction carries their name or design and other distinctive marks on the drawing are for use on the specified project only and shall not be used otherwise without written permission of the office.



2 South Elevation
Scale: 1:100

Alliance Française De Vancouver
6161 Cambie
Vancouver BC, V5Z 3B2

0	21-03-19	Prior to Response Submission #2
REV	Y M D	ISSUE
CHECKED BY	PROJECT ID	
CD/M/M	1705	
DRAWN BY	CAD FILE NAME	
J/A/CB	Alliance 30.mwp	

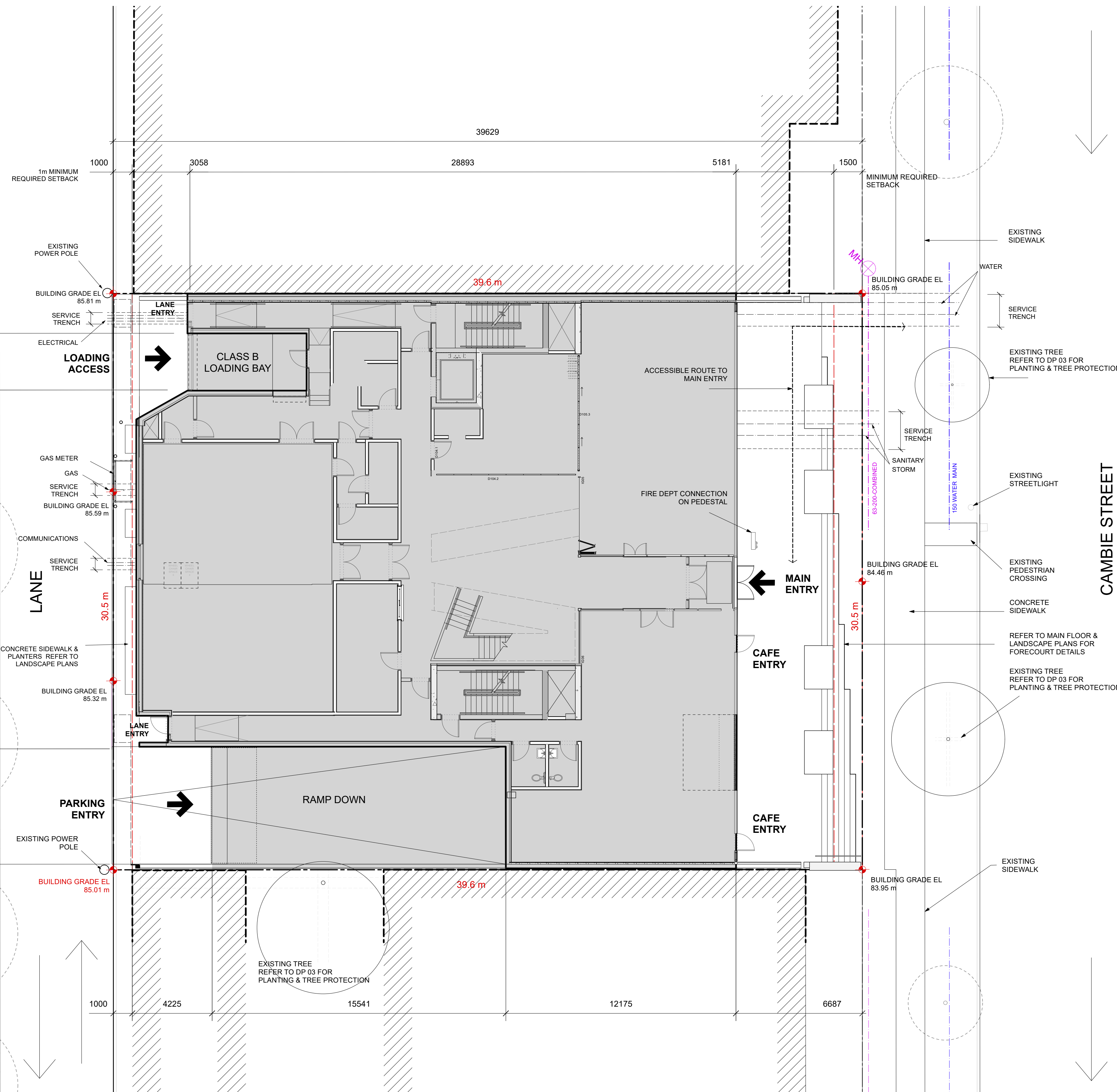
SHEET TITLE
Elevation - South

DRAWING NO.
DP 15

EXISTING
3 STOREY INSTITUTIONAL
(PERETZ CENTRE FOR
SECULAR JEWISH CULTURE)

EXISTING
SHED

EXISTING
4 STOREY
RESIDENTIAL



NOTES

TRENCHING FOR UTILITY
CONNECTIONS TO BE
COORDINATED WITH
ENGINEERING
DEPARTMENT TO ENSURE
SAVE ROOT ZONES OF
RETAINED TREES.
METHODS OF TREE
PROTECTION FOR STREET
TREES TO BE APPROVED
BY PARK BOARD

MCFARLAND MARCEAU
ARCHITECTS LTD
158 Chestnut Street
North Vancouver BC
V7M 3K3
T 604.283.1115
www.mfma.ca

Alliance Française de Vancouver
6161 Cambie St, Vancouver BC

7	21-03-19	Prior to Response Condition #2
REV	Y M D	ISSUE
ORDERED BY	PROJECT ID	
MMCO	1705	
DRAWN BY	CAD FILE NAME	
SL	1705-000-Project Data and Site related work	

3 Site Plan
Scale: 1:125



SHEET TITLE
Site Plan

DRAWING NO.
DP 02