

## MOTION

### 5. **Approval of Form of Development: 2235 East Broadway**

THAT the form of development for this portion of the site known as 2235 East Broadway (formerly known as 2209-2249 East Broadway) be approved generally as illustrated in the Development Application Number DP-2020-00065, prepared by TKA+D Architecture Design Inc., and stamped "Received, Community Services Group, Development Services", on October 7, 2020, provided that the Director of Planning may impose conditions and approve design changes which would not adversely affect either the development character of the site or adjacent properties.

\* \* \* \* \*

#### **Additional Background Information:**

<https://rezoning.vancouver.ca/applications/2209ebroadway/index.htm>

KEYNOTE LEGEND

TAG	DESCRIPTION
BR1	BRICK - OFFWHITE - REG
BR1A	BRICK - OFFWHITE - FISHSCALE DETAIL
BR2	BRICK - CHARCOAL - REGULAR
BR2A	BRICK - CHARCOAL - FISHSCALE DETAIL
CIPC2	CAST IN PLACE CONCRETE - ARCH
FC1	FIBER CEMENT - SHINGLES - PAINTED P2
FC2	FIBER CEMENT - SHINGLES - ARCTIC WHITE
FC3	FIBER CEMENT - SHIPLAP SIDING - ARCTIC WHITE
FC4	FIBER CEMENT - REVEAL 2.0 - PAINTED P2
FDC	FIRE DEPARTMENT CONNECTION
GRDFB	GUARDRAIL BLACKENED ALUMINUM
GSC	GREEN SCREEN
HEDGE	HEDGE - SEE LANDSCAPE
MWC-1	METAL WALL CLADDING - LB BIRCH FINISH
OHD	OVERHEAD DOOR
P1	PAINT - CP WINTER WHITE
PLTR	PLANTER - SEE LANDSCAPE
SSH1	SUNSHADE - TYPICAL



1 North (Laneway)



2 South (Broadway)


2	201007	Re-submitted for Development Permit	
1	200128	Submitted for Development Permit	
		SCALE: 3/32" = 1'-0"	DATE: 200910
			DRN: KP VM KR
		PROJECT# 17022	RZ-2018-00065 DP-2020-00065 BP-2020-02833

FILE PATH: C:\Users\Kevin\Documents\Popolo - Central\_Kevin.rvt PLOT DATE: 10/7/2020 5:19:16 PM  
 All drawings and related documents are the property of TKA+D Architecture and Design Inc. and may not be reproduced in whole or in part without the architect's permission. This drawing should not be used to calculate areas. Do not scale this drawing. All dimensions to be checked on site by the contractor and such dimensions to be their responsibility. All work must comply with the relevant Building Code By Law and related documents. Drawing errors and omissions must be immediately reported to the Architect.

**KEYNOTE LEGEND**

TAG	DESCRIPTION
BR1	BRICK - OFFWHITE - REG
BR1A	BRICK - OFFWHITE - FISHSCALE DETAIL
BR2	BRICK - CHARCOAL - REGULAR
BR2A	BRICK - CHARCOAL - FISHSCALE DETAIL
FC1	FIBER CEMENT - SHINGLES - PAINTED P2
FC2	FIBER CEMENT - SHINGLES - ARCTIC WHITE
FC3	FIBER CEMENT - SHIPLAP SIDING - ARCTIC WHITE
FC4	FIBER CEMENT - REVEAL 2.0 - PAINTED P2
GRDFB	GUARDRAIL BLACKENED ALUMINUM
PLTR	PLANTER - SEE LANDSCAPE
SH	SOAP HOLDER
SSH1	SUNSHADE - TYPICAL



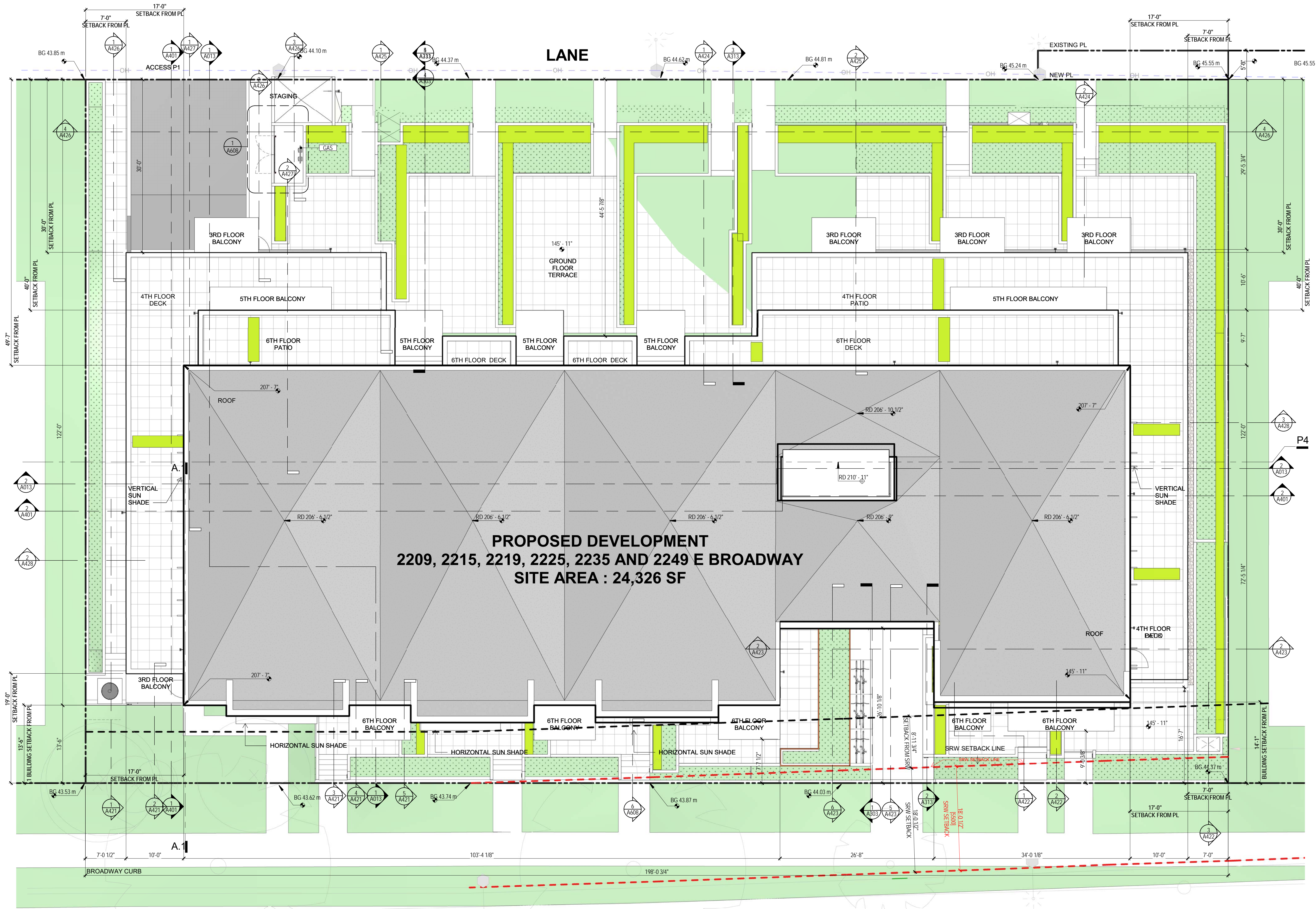
1 East  
3/32" = 1'-0"



2 West  
3/32" = 1'-0"

2	201007	Re-submitted for Development Permit
1	200128	Submitted for Development Permit
SCALE: 3/32" = 1'-0"		DATE: 200910
PROJECT# 17022		RZ-2018-00065 DP-2020-00065 BP-2020-02833
FILE PATH:	C:\Users\Kevin\Documents\Popolo - Central_Kevin.rvt	PLOT DATE: 10/7/2020 5:19:56 PM

All drawings and related documents are the property of TKA+D Architecture and Design Inc. and may not be reproduced in whole or in part without the architect's permission. This drawing should not be used to calculate areas. Do not scale this drawing. All dimensions to be checked on site by the contractor and such dimensions to be their responsibility. All work must comply with the relevant Building Code By Law and related documents. Drawing errors and omissions must be immediately reported to the Architect.



**PROPOSED DEVELOPMENT**  
2209, 2215, 2219, 2225, 2235 AND 2249 E BROADWAY  
SITE AREA : 24,326 SF

**2.65 FSR MASSING**

1	201007	Re-submitted for Development Permit
1	200910	Issued for Addressing Review
1	200829	Re-submitted for DP WIP

SCALE:	1/8" = 1'-0"	DATE:	200910	DRW:	KP VM KR
PROJECT#	17022	RZ-2018-00065	DP-2020-00065	BP-2020-02833	
FILE	C:\Users\Victor\Documents\Popolo - Central_Vicior\RCPL.rvt		PLOT	DATE: 10/20/20 5:46:01 PM	

All drawings and related documents are the property of TKA+D Architecture and Design Inc. and may not be reproduced in whole or in part without the architect's permission. This drawing should not be used to calculate areas. Do not scale this drawing. All dimensions to be checked on site by the contractor and such dimensions to be their responsibility. All work must comply with the relevant Building Code. By Law and related documents. Drawing errors and omissions must be immediately reported to the Architect.

**TKA+D**  
ARCHITECTURE + DESIGN INC.  
305 - 1930 PANDORA STREET VANCOUVER, BC CANADA V5L4L2 P 604 569 3499

Popolo  
2235 E Broadway

Site Plan

A100

EAST BROADWAY