



St. Paul's Redevelopment Project

Transforming the future of health care for British Columbians



Dr. Jeff Pike

*Physician Director – Clinical Planning
SPH Redevelopment*

Innovation through History



Caring for our most vulnerable and marginalized



Innovation

1956



1977



1990



2005



2010



2019



Preserving the Past and Building the Future

Care
Experience

People

Discovery

Innovation

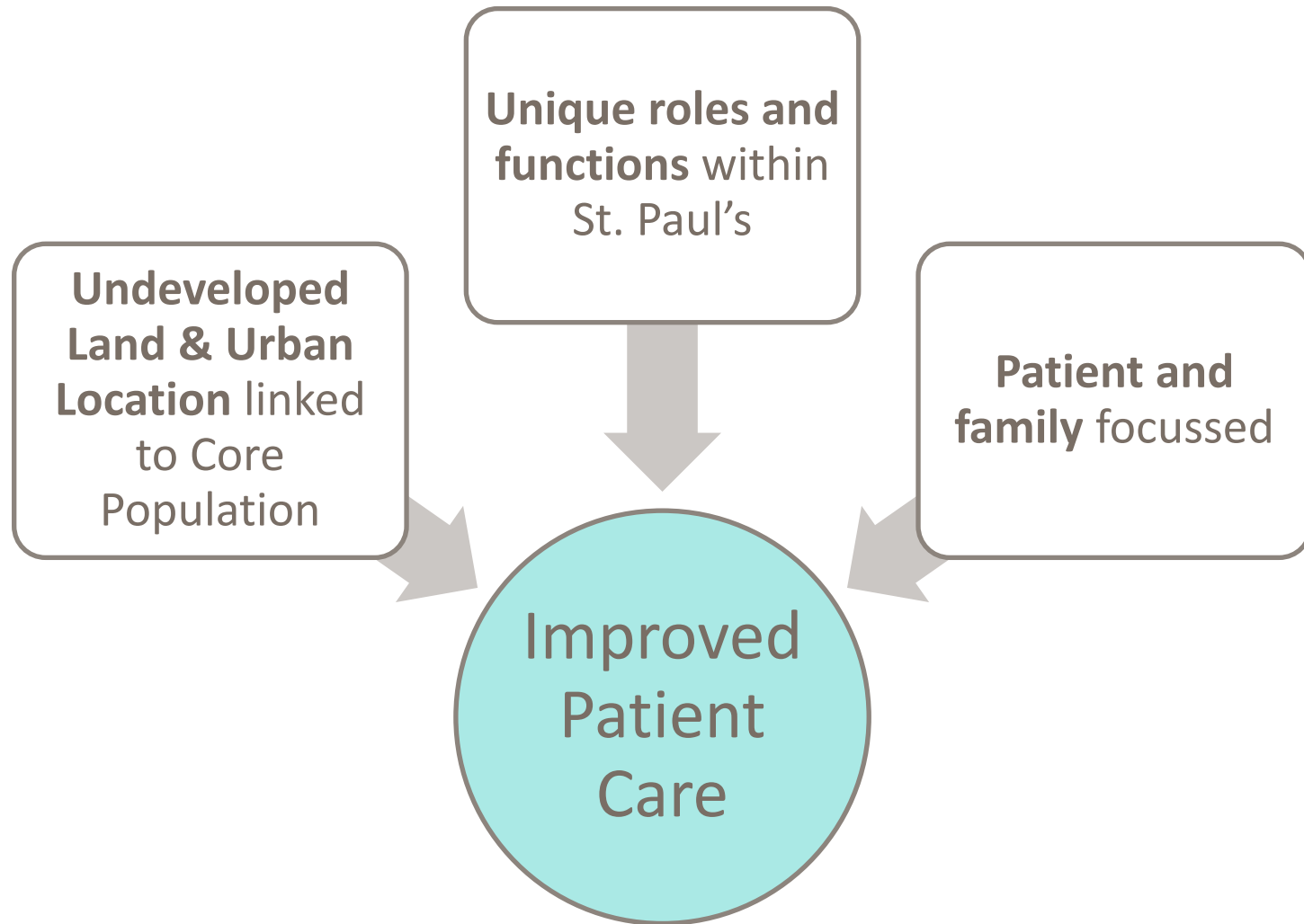
Populations
of Emphasis

Mission to serve through compassionate care, teaching and research

Re-imagining a new
hospital and health campus
from the ground up



Key Opportunities for Transformational Change



Current Operating Model

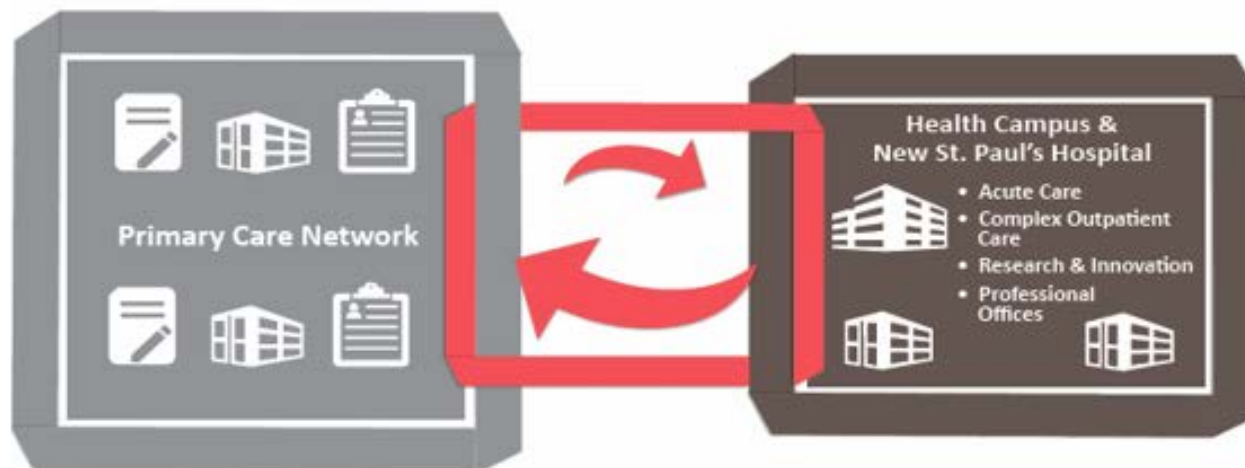


- Predominant flow of services to acute care

Key Challenges:

- Inadequate and inconsistent communication
- Over reliance on acute care
- Unscheduled access to care

Transformed Operating Model



- Predominant flow of services supporting the Primary Care Network
- Formal linkages between PCN and the health campus

Key Success Factors:

- ✓ Effective communication and coordinated care across the system
- ✓ Timely access to the right care
- ✓ Access to the right resources

Shift #1: Changing Models of Care

Target Patient Populations

Mental Health and
Substance Use

Frail Elderly

Complex Chronic
Care

Surgical /
Procedural

Indigenous peoples

Innovations in care

Urban Health

Healthy Aging

“Super floor”

Equitable access
provincially

Integrated Campus

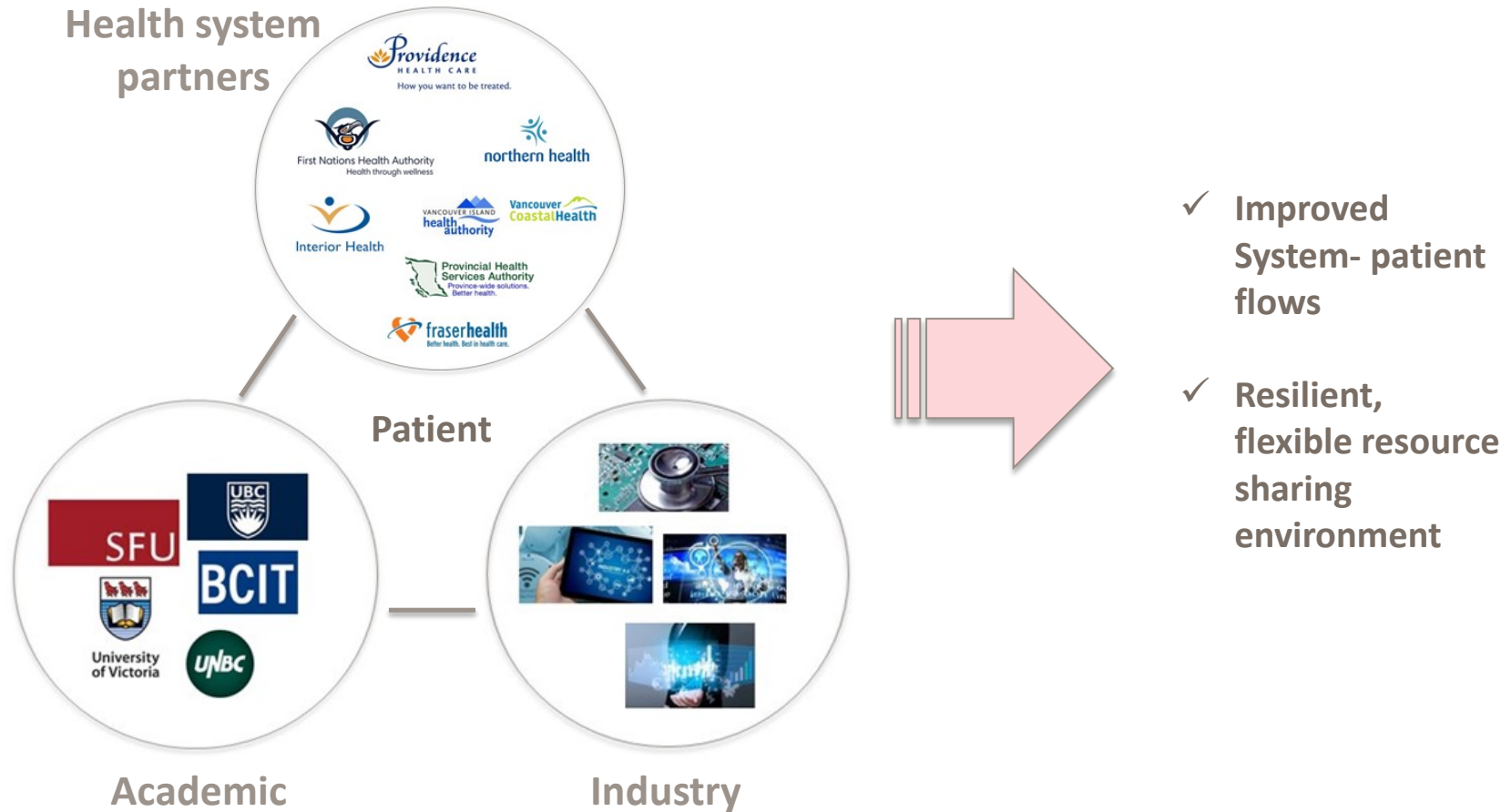
Core Hospital

Clinical Support &
Research Centre
(Innovation)

Community services

Shift #2: Bridging Health System Partnerships

- Leveraging a new Core Hospital
 - Align core health services



Community and Integration





Tony Gill, Architect AIBC, MRAIC, AIA

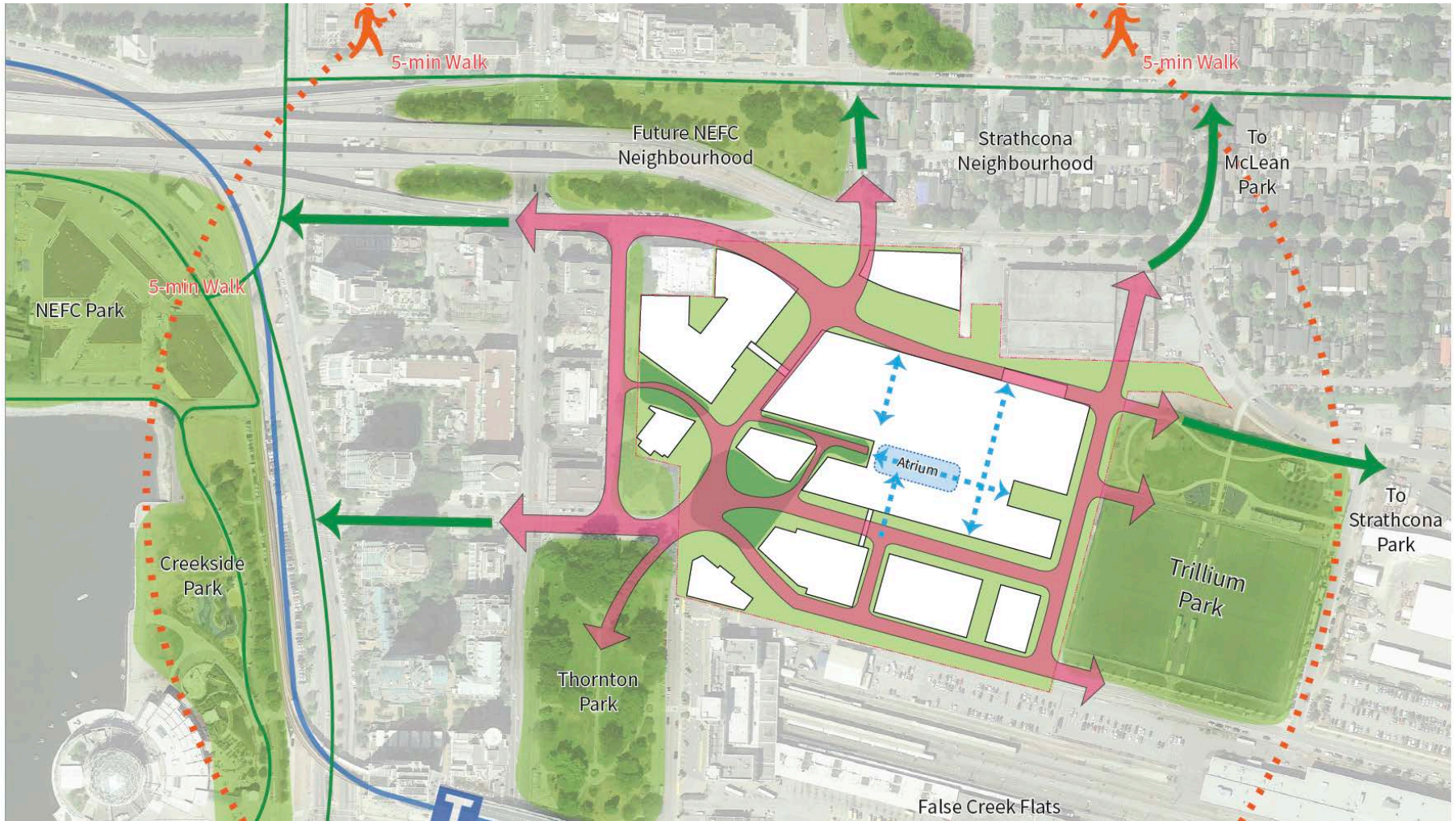
Global Director, P3 Buildings

IBI Group

The New St. Paul's Master Plan



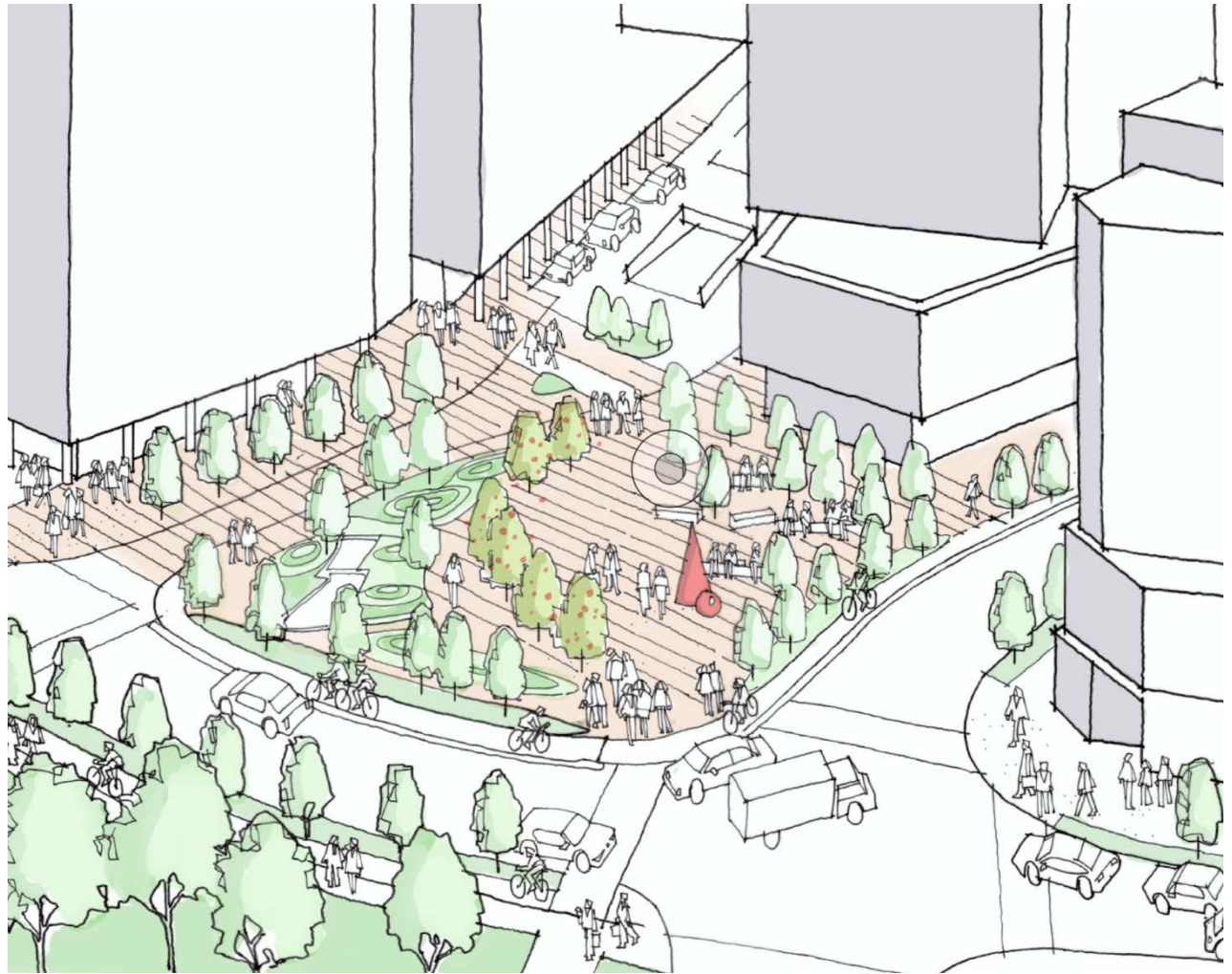
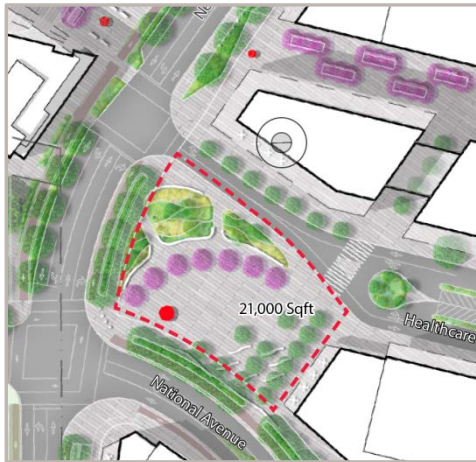
Connected Campus



Welcoming Civic Presence



St. Paul's Plaza



Connected Public Realm



Wellness Walk



Vibrant High Street



Plan for the Future

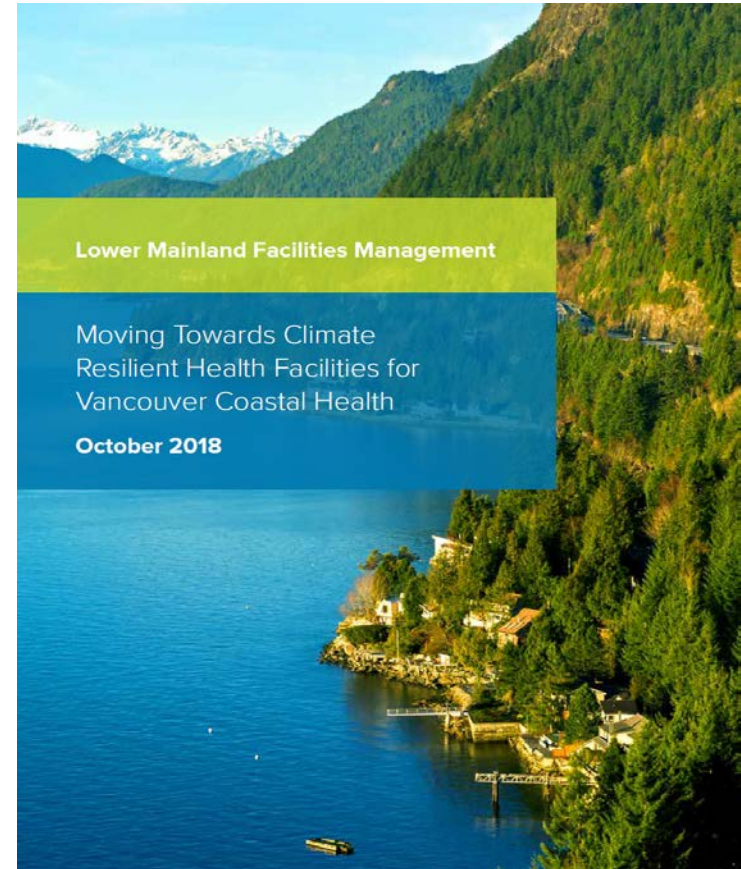
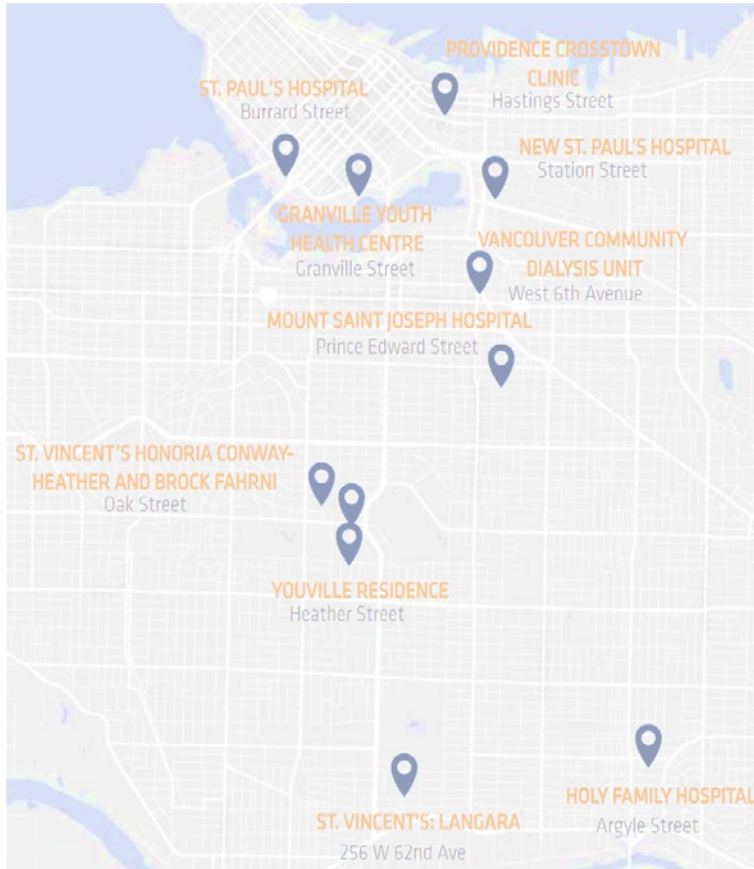




Angie Woo, MSc

*Lead, Climate Resilience & Adaptation
Energy & Environmental Sustainability*

Moving Toward Climate Resilient Health Facilities



Health Services, Patients & Communities

Critical systems

- ✓ electricity
- ✓ water, sewer
- ✓ ventilation
- ✓ temperature

Workforce

- ✓ access
- ✓ thermal comfort, productivity
- ✓ occupational health & safety
- ✓ sick, overtime, absent

Critical supplies

- ✓ food & water
- ✓ equipment

Patients

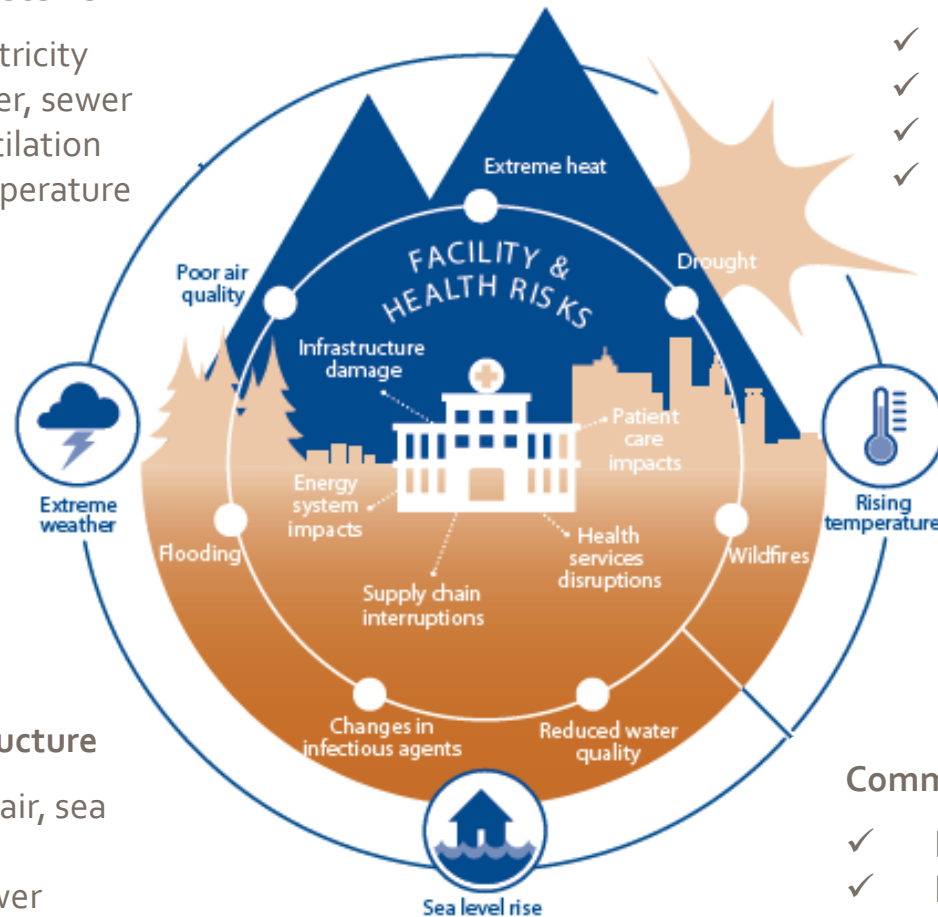
- ✓ personal A/C & filtration
- ✓ patient stays & readmissions
- ✓ pharmaceuticals

Critical infrastructure

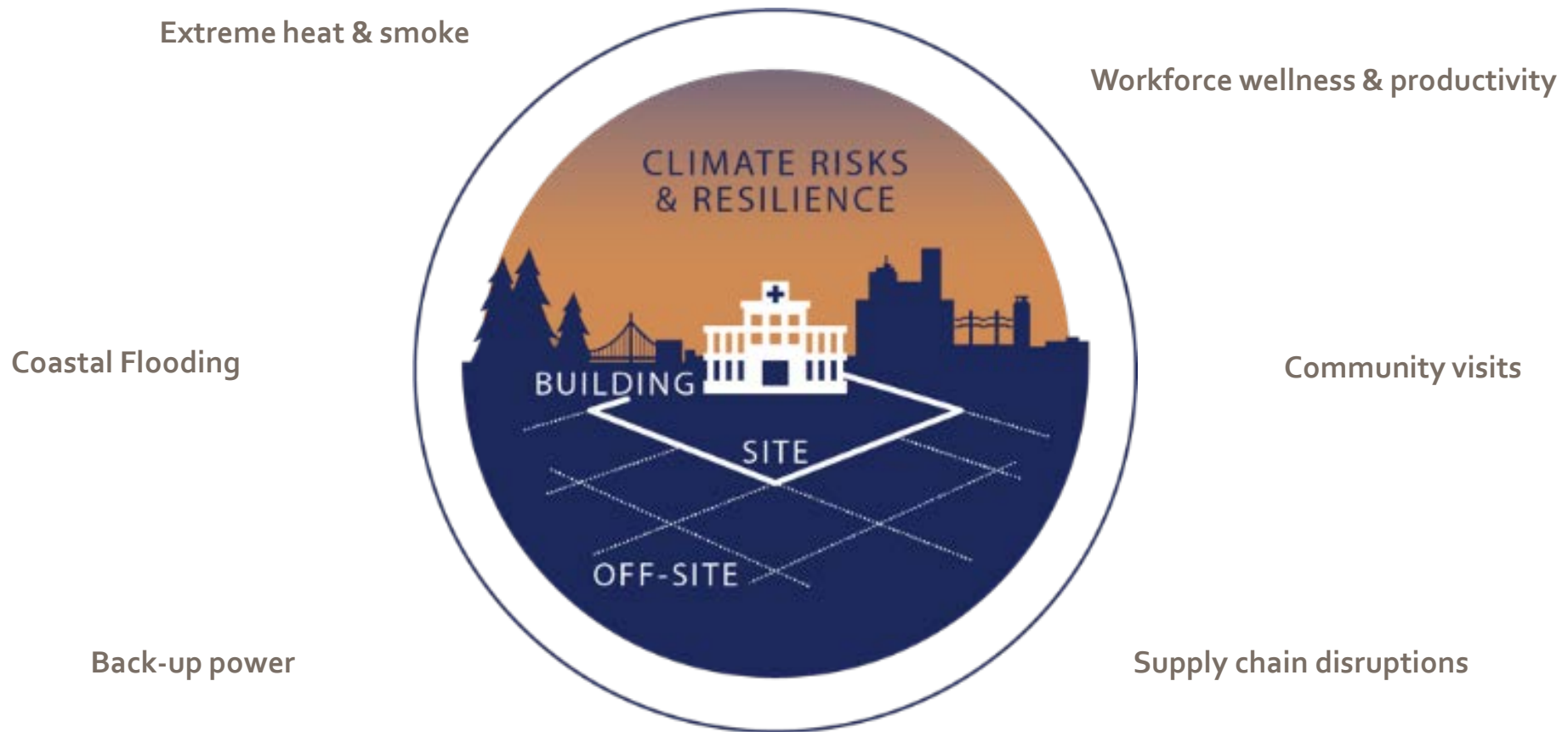
- ✓ road, rail, air, sea
- ✓ electricity
- ✓ water, sewer

Community

- ✓ heat-related illnesses, conflict
- ✓ heat & air quality advisories
- ✓ water restrictions, drought
- ✓ need for refuge & healthcare



Resilient Design & Operations Strategies



THE NEW  STpaul's

Thank You

thenewstpauls.ca

 *Providence*
HEALTH CARE