

## RESOLUTION

### 7. **Powell Street Overpass – Land Exchanges Between the City, Canadian Pacific Railway Limited, and the Vancouver Fraser Port Authority – Road Stop-up and Close (City 1)**

THAT WHEREAS:

1. The City of Vancouver is the owner of all the streets and lanes lying within the limits of the City of Vancouver;
2. There is a proposal to transfer a portion of the northerly side of Powell Street east of Hawks Avenue, to the Vancouver Fraser Port Authority now doing business under the name of Port of Vancouver (“POV”);
3. The proposal requires the closure, stopping-up and raising of title to a 115.1 square metre portion of Powell Street abutting [PID: 029-638-267] Lot 2 District Lots 181 and 196 Group 1 New Westminster District Plan EPP41183;
4. POV is the owner of the said abutting Lot 2;
5. The said portion of Powell Street to be closed, stopped-up, and conveyed to POV was dedicated by the deposit of Plan 196 and Plan 19584 in 1885 and 1983 respectively;
6. The portion of Powell Street to be closed is no longer required for road purposes;
7. The said portion of road to be closed will be conveyed to POV.

THEREFORE BE IT RESOLVED THAT all that portion of road adjacent to said Lot 2 the same as shown in heavy outline on the Reference Plan prepared by Fred L. Wong, B.C.L.S., completed on the 11<sup>th</sup> day of July, 2016, inspected by Alessandro Di Nozzi B.C.L.S. on April 2, 2019, and numbered Plan EPP62896, a copy of which is attached hereto, be closed, and stopped-up; and

BE IT FURTHER RESOLVED THAT the Director of Legal Services be authorized to make application on behalf of the City of Vancouver, to raise a single title in the name of the City of Vancouver to the said closed portions of Powell Street, the same as shown within heavy outline on the Reference Plan prepared by Fred L. Wong, B.C.L.S. completed on the 11<sup>th</sup> day of July, 2016, and numbered Plan EPP62900, a copy of which is attached hereto.

(Powell Street Overpass – Land Exchanges between the City, the Canadian Pacific Railway, and the Vancouver Fraser Port Authority (RTS13041) as per Council authority April 23, 2019)

\* \* \* \* \*

**REFERENCE PLAN TO ACCOMPANY RESOLUTION OF THE COUNCIL OF CITY OF VANCOUVER STOPPING-UP PORTIONS OF ROADS DEDICATED (SEE BOOK OF REFERENCE), ALL OF GROUP ONE, NEW WESTMINSTER DISTRICT.**

PURSUANT TO SECTION 291, VANCOUVER CHARTER.

BCGS 92G.025

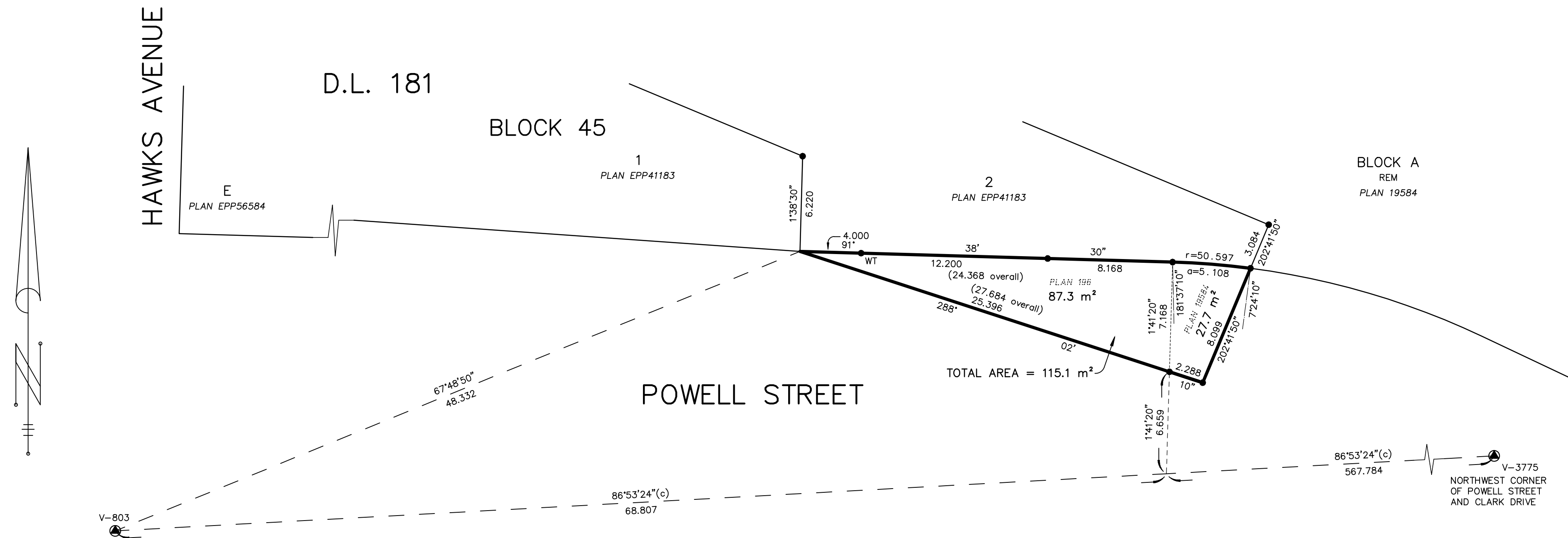
5 4 3 2 1 0 5 10 15 20 25 METRES

ALL DISTANCES ARE IN METERS AND DECIMALS THEREOF.

THE INTENDED PLOT SIZE OF THIS PLAN IS 560mm IN WIDTH BY 430mm IN HEIGHT (C SIZE) WHEN PLOTTED AT A SCALE OF 1:200.

BOOK OF REFERENCE	
PORTIONS OF ROADS DEDICATED BY THE DEPOSIT OF:	AREA
PLAN 196, ADJACENT TO LOT 2, DISTRICT LOTS 181 AND 196, PLAN EPP41183	87.3 m <sup>2</sup>
PLAN 19584, ADJACENT TO LOT 2, DISTRICT LOTS 181 AND 196, PLAN EPP41183	27.7 m <sup>2</sup>

PLAN EPP62896



INTEGRATED SURVEY AREA NO. 31, CITY OF VANCOUVER, NAD83 (CSRS) 4.0.0.BC.1.GVRD.

GRID BEARINGS ARE DERIVED FROM OBSERVATIONS BETWEEN GEODETIC CONTROL MONUMENTS V-803 AND V-3775 AND ARE REFERRED TO THE CENTRAL MERIDIAN OF UTM ZONE 10.

THIS PLAN SHOWS HORIZONTAL GROUND-LEVEL DISTANCES UNLESS OTHERWISE SPECIFIED. TO COMPUTE GRID DISTANCES, MULTIPLY GROUND-LEVEL DISTANCES BY THE AVERAGE COMBINED FACTOR OF 0.9996023 WHICH HAS BEEN DERIVED FROM GEODETIC CONTROL MONUMENTS V-803 AND V-3775.

THE UTM COORDINATES AND ESTIMATED HORIZONTAL POSITIONAL ACCURACY ACHIEVED ARE DERIVED FROM THE MASCOT PUBLISHED COORDINATES AND STANDARD DEVIATIONS FOR GEODETIC CONTROL MONUMENTS V-803 AND V-3775.

**LEGEND**

- INDICATES CONTROL MONUMENT FOUND
- INDICATES STANDARD IRON POST FOUND

**NOTE:**

FOR CLARITY PURPOSES CERTAIN OFFSET LINES ARE NOT TO SCALE. OFFSET POSTS AND WITNESS POSTS ARE ON PROPERTY LINE OR PROPERTY LINE PRODUCTION UNLESS OTHERWISE NOTED. THIS PLAN SHOWS ONE OR MORE WITNESS POSTS WHICH ARE NOT SET ON THE TRUE CORNER(S).

UTM ZONE 10 COORDINATES			
GCM	NORTHING	EASTING	ABSOLUTE ACCURACY
V-803	5,458,903.166	493,760.405	0.013
V-3775	5,458,937.691	494,395.818	0.011
- DATUM: NAD83 (CSRS) 4.0.0.BC.1.GVRD			

INSPECTED UNDER THE LAND TITLE ACT ON THE 2nd DAY OF APRIL, 2019.

ALESSANDRO DI NOZZI, BCLS 681

THE FIELD SURVEY REPRESENTED BY THIS PLAN WAS COMPLETED ON THE 11th DAY OF JULY, 2016.

FRED L. WONG, BCLS 613

CITY OF VANCOUVER (604) 873-7330

2016-0726 #189378

**REFERENCE PLAN OF PORTIONS OF CLOSED  
ROADS DEDICATED BY THE DEPOSIT OF  
(SEE BOOK OF REFERENCE), ALL OF  
GROUP ONE, NEW WESTMINSTER DISTRICT.**

PURSUANT TO SECTION 101(1)(b), LAND TITLE ACT

BCGS 92G.025

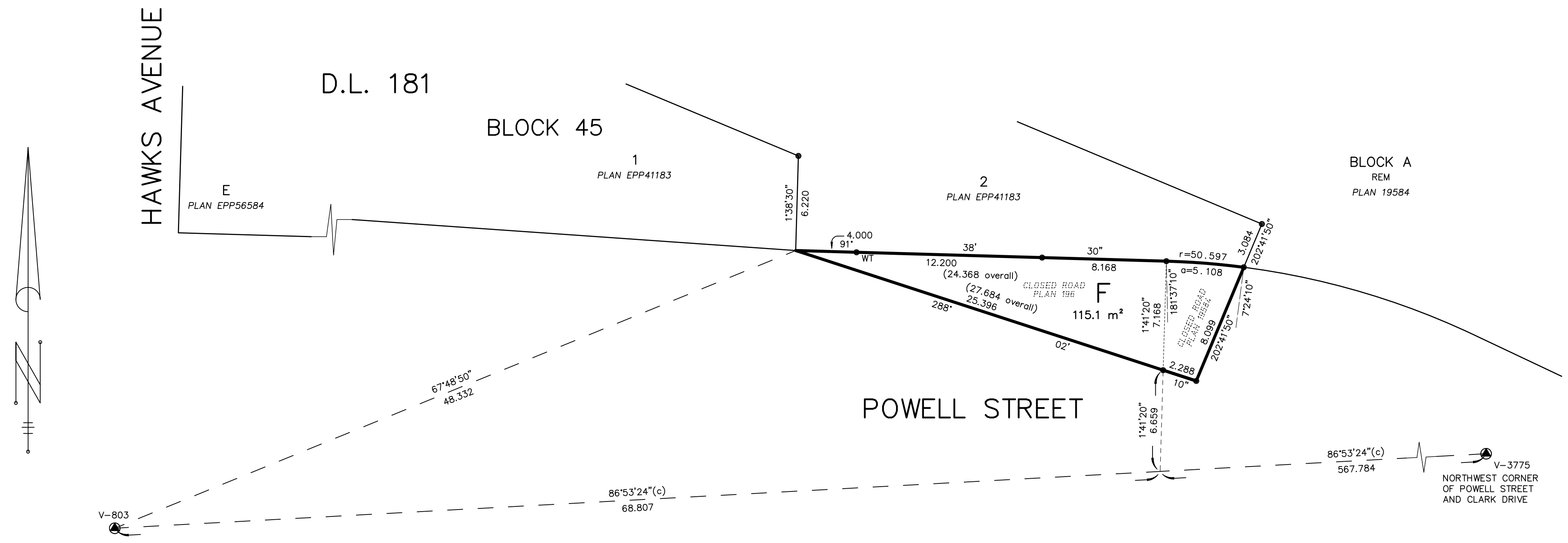
5 4 3 2 1 0 5 10 15 20 25 METRES

ALL DISTANCES ARE IN METERS AND DECIMALS THEREOF.

THE INTENDED PLOT SIZE OF THIS PLAN IS 560mm IN WIDTH BY 430mm IN HEIGHT (C SIZE) WHEN PLOTTED AT A SCALE OF 1:200.

BOOK OF REFERENCE	
PORTIONS OF ROADS DEDICATED BY THE DEPOSIT OF:	
PLAN 196, ADJACENT TO LOT 2, DISTRICT LOTS 181 AND 196, PLAN EPP41183	
PLAN 19584, ADJACENT TO LOT 2, DISTRICT LOTS 181 AND 196, PLAN EPP41183	

**PLAN EPP62900**



INTEGRATED SURVEY AREA NO. 31, CITY OF VANCOUVER, NAD83 (CSRS) 4.0.0.BC.1.GVRD.

GRID BEARINGS ARE DERIVED FROM OBSERVATIONS BETWEEN GEODETIC CONTROL MONUMENTS V-803 AND V-3775 AND ARE REFERRED TO THE CENTRAL MERIDIAN OF UTM ZONE 10.

THIS PLAN SHOWS HORIZONTAL GROUND-LEVEL DISTANCES UNLESS OTHERWISE SPECIFIED. TO COMPUTE GRID DISTANCES, MULTIPLY GROUND-LEVEL DISTANCES BY THE AVERAGE COMBINED FACTOR OF 0.9996023 WHICH HAS BEEN DERIVED FROM GEODETIC CONTROL MONUMENTS V-803 AND V-3775.

THE UTM COORDINATES AND ESTIMATED HORIZONTAL POSITIONAL ACCURACY ACHIEVED ARE DERIVED FROM THE MASCOT PUBLISHED COORDINATES AND STANDARD DEVIATIONS FOR GEODETIC CONTROL MONUMENTS V-803 AND V-3775.

**LEGEND**

- INDICATES CONTROL MONUMENT FOUND
- INDICATES STANDARD IRON POST FOUND

**NOTE:**

FOR CLARITY PURPOSES CERTAIN OFFSET LINES ARE NOT TO SCALE. OFFSET POSTS AND WITNESS POSTS ARE ON PROPERTY LINE OR PROPERTY LINE PRODUCTION UNLESS OTHERWISE NOTED. THIS PLAN SHOWS ONE OR MORE WITNESS POSTS WHICH ARE NOT SET ON THE TRUE CORNER(S). LOT CREATED ON THIS PLAN IS A CONTINUATION OF AN EXISTING NUMBERING SERIES.

UTM ZONE 10 COORDINATES				
GCM	NORTHING	EASTING	PCF	HPA
V-803	5,458,903.166	493,760.405	0.9996021	0.013
V-3775	5,458,937.691	494,395.818	0.9996025	0.011
- DATUM: NAD83 (CSRS) 4.0.0.BC.1.GVRD				
- PCF DENOTES POINT COMBINED FACTOR				
- HPA DENOTES ESTIMATED HORIZONTAL POSITIONAL ACCURACY				

THE FIELD SURVEY REPRESENTED BY THIS PLAN WAS COMPLETED ON THE 11th DAY OF JULY, 2016.

FRED L. WONG, BCLS 613