

RESOLUTION

10. Powell Street Overpass – Land Exchanges Between the City, Canadian Pacific Railway Limited, and the Vancouver Fraser Port Authority – Road Establishment (Parcel D)

THAT WHEREAS the City has closed, stopped-up and raised title to all that portion of Powell Street more particularly described as:

Parcel Identifier: _____
Parcel D, Block 49, District Lot 181, Group One, New Westminster District, Plan EPP62899;

AND WHEREAS a part of the said portion of Powell Street is still required for road purposes;

AND WHEREAS the remainder of the said portion of Powell Street is the subject of a land exchange between the City and the Canadian Pacific Railway (“CPR”);

AND WHEREAS it is deemed expedient and in the public interest to allocate a part of the said closed portion of Powell Street for road purposes;

THEREFORE BE IT RESOLVED THAT all that part of Parcel Identifier:

_____,

Parcel D, Block 49, District Lot 181, Group One, New Westminster District, Plan EPP62899, the same as shown in heavy outline on the Reference Plan prepared by Fred L. Wong, B.C.L.S., completed on the 11th day of July 2016, inspected by Alessandro Di Nozzi, B.C.L.S. on the 2nd day of April 2019, and numbered EPP62903, a copy of which is attached hereto is hereby established for road purposes and declared to form and to constitute a portion of road.

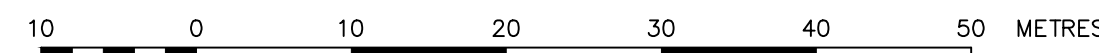
(Powell Street Overpass – Land Exchanges between the City, the Canadian Pacific Railway, and the Vancouver Fraser Port Authority (RTS13041) as per Council Authority April 23, 2019)

* * * * *

REFERENCE PLAN TO ACCOMPANY RESOLUTION OF THE COUNCIL OF CITY OF VANCOUVER ESTABLISHING FOR HIGHWAY PURPOSES A PORTION OF LOT D, BLOCK 49, DISTRICT LOT 181, GROUP ONE, NEW WESTMINSTER DISTRICT, PLAN EPP62899.

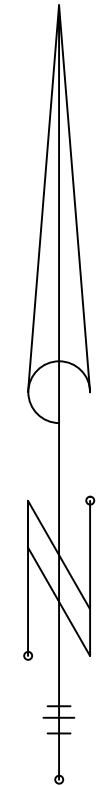
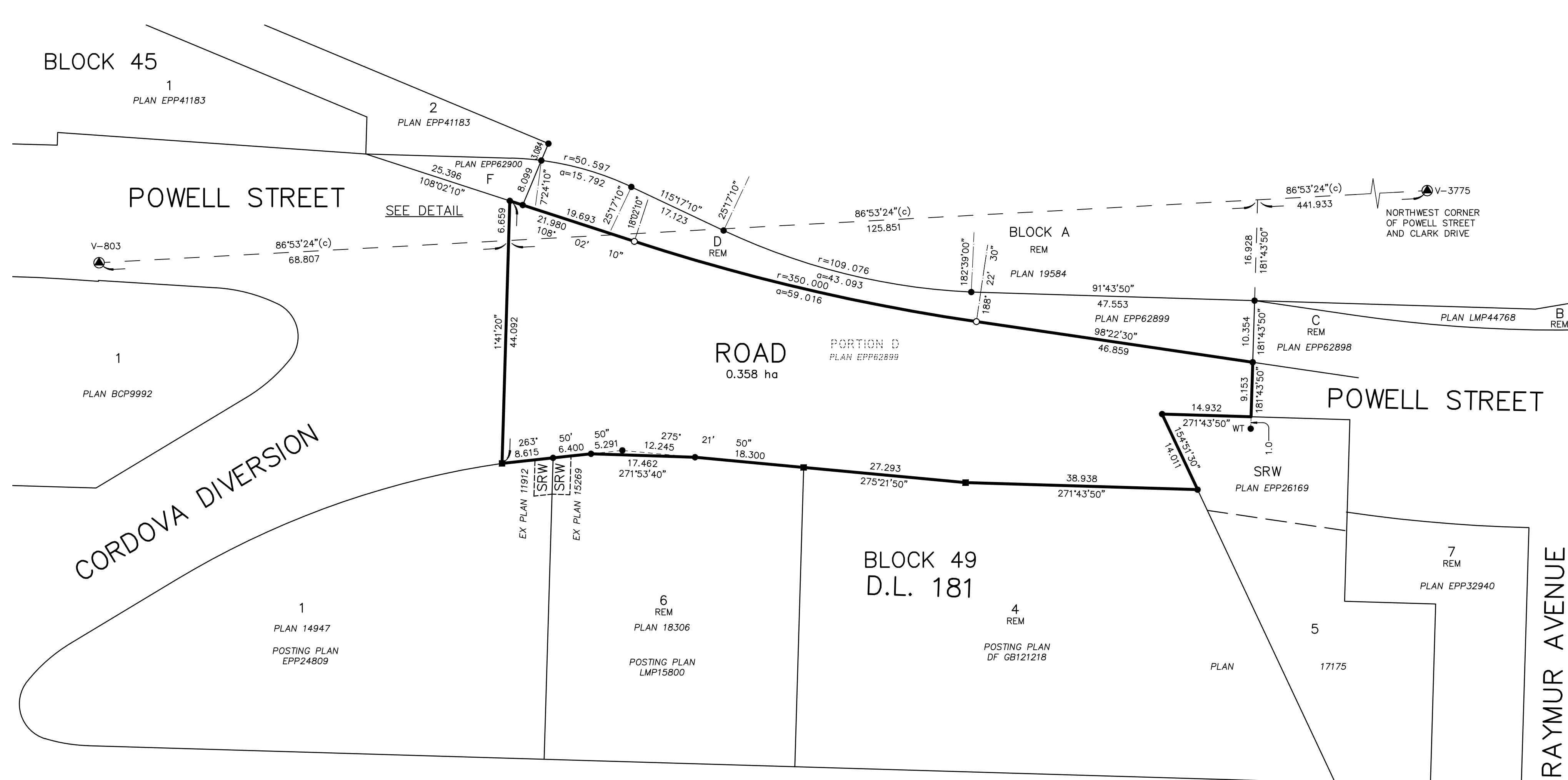
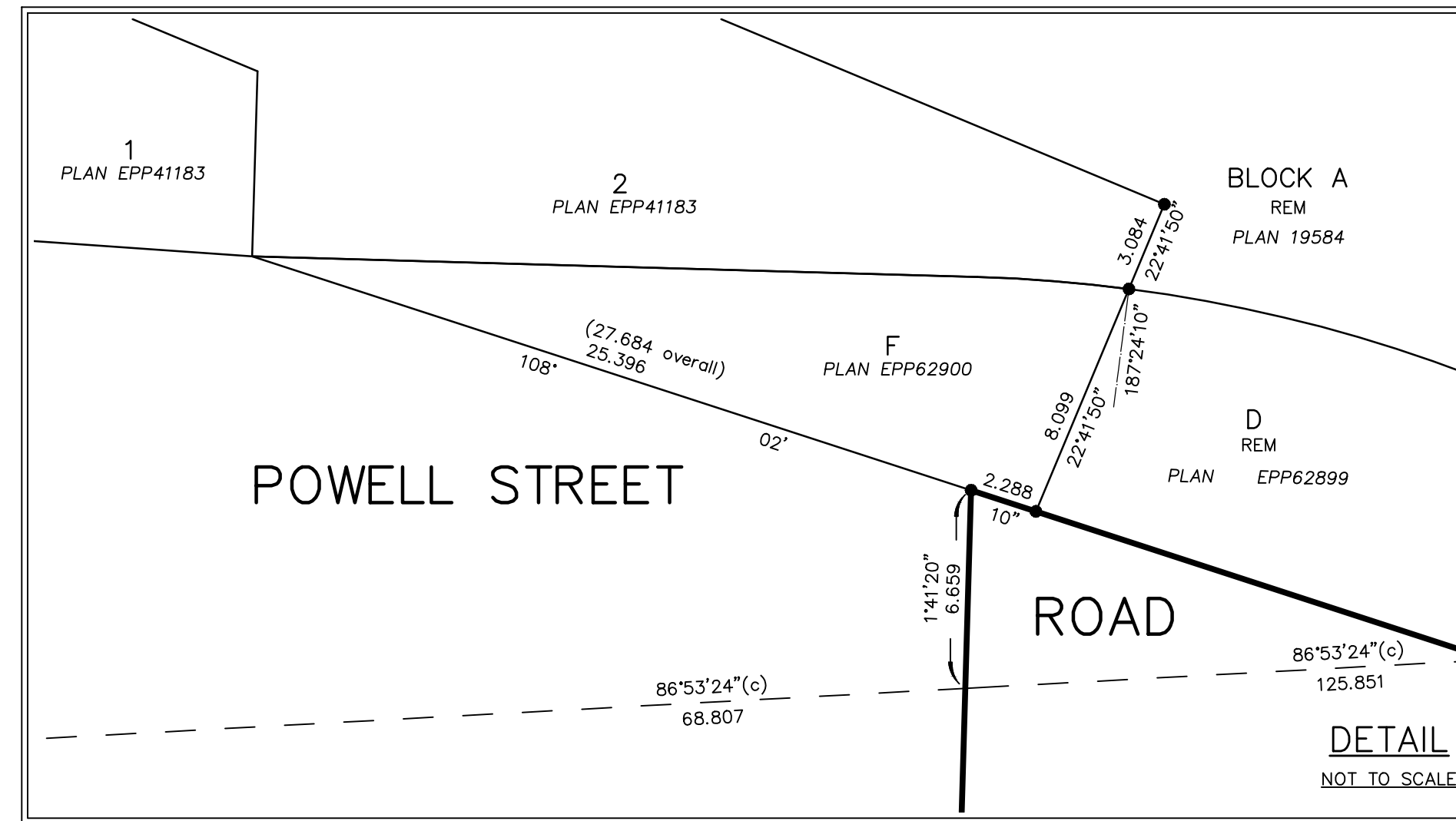
PURSUANT TO SECTION 291, VANCOUVER CHARTER.

BCGS 92G.025



ALL DISTANCES ARE IN METERS AND DECIMALS THEREOF.

THE INTENDED PLOT SIZE OF THIS PLAN IS 864mm IN WIDTH BY 560mm IN HEIGHT (D SIZE) WHEN PLOTTED AT A SCALE OF 1:500.



INTEGRATED SURVEY AREA NO. 31, CITY OF VANCOUVER, NAD83 (CSRS) 4.0.0.BC.1.GVRD.

GRID BEARINGS ARE DERIVED FROM OBSERVATIONS BETWEEN GEODETIC CONTROL MONUMENTS V-803 AND V-3775 AND ARE REFERRED TO THE CENTRAL MERIDIAN OF UTM ZONE 10.

THIS PLAN SHOWS HORIZONTAL GROUND-LEVEL DISTANCES UNLESS OTHERWISE SPECIFIED. TO COMPUTE GRID DISTANCES, MULTIPLY GROUND-LEVEL DISTANCES BY THE AVERAGE COMBINED FACTOR OF 0.9996023 WHICH HAS BEEN DERIVED FROM GEODETIC CONTROL MONUMENTS V-803 AND V-3775.

THE UTM COORDINATES AND ESTIMATED HORIZONTAL POSITIONAL ACCURACY ACHIEVED ARE DERIVED FROM THE MASCOT PUBLISHED COORDINATES AND STANDARD DEVIATIONS FOR GEODETIC CONTROL MONUMENTS V-803 AND V-3775.

LEGEND

- INDICATES CONTROL MONUMENT FOUND
- INDICATES LEAD PLUG FOUND
- INDICATES STANDARD IRON POST FOUND

NOTE:

FOR CLARITY PURPOSES CERTAIN OFFSET LINES ARE NOT TO SCALE.

OFFSET POSTS AND WITNESS POSTS ARE ON PROPERTY LINE OR PROPERTY LINE PRODUCTION UNLESS OTHERWISE NOTED.

THIS PLAN SHOWS ONE OR MORE WITNESS POSTS WHICH ARE NOT SET ON THE TRUE CORNER(S).

UTM ZONE 10 COORDINATES			
GCM	NORTHING	EASTING	ABSOLUTE ACCURACY
V-803	5,458,903.166	493,760.405	0.013
V-3775	5,458,937.691	494,395.818	0.011
- DATUM: NAD83 (CSRS) 4.0.0.BC.1.GVRD			

CORDOVA STREET

INSPECTED UNDER THE LAND TITLE ACT ON THE 2nd DAY OF APRIL, 2019.

ALESSANDRO DI NOZZI, BCLS 681

THE FIELD SURVEY REPRESENTED BY THIS PLAN WAS COMPLETED ON THE 11th DAY OF JULY, 2016.

FRED L. WONG, BCLS 613

CITY OF VANCOUVER (604) 873-7330

2016-0726 #189385