

SKYTRAIN TO UBC

Presentation to Vancouver City Council
January, 2019

MICHAEL WHITE
ASSOCIATE VICE-PRESIDENT, CAMPUS & COMMUNITY PLANNING



UBC IS A SIGNIFICANT ACADEMIC AND EMPLOYMENT CENTRE

3rd largest
employment centre in BC



80,000
people on campus
every day



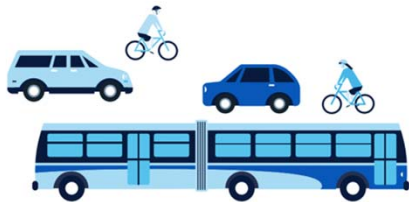
- UBC's daytime population includes:
 - UBC students
 - UBC faculty and staff
 - employees at the UBC Hospital, the TRIUMF particle accelerator centre and non-UBC owned businesses on campus
 - visitors to the recreation facilities, cultural amenities, beaches and parks



CONGESTION

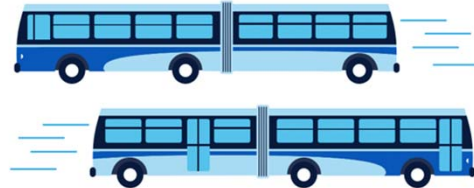
156,000

daily trips to and from UBC,
52% on transit



80,000

daily trips on transit
to and from UBC



1,000+

buses per day flow through
UBC's bus exchange



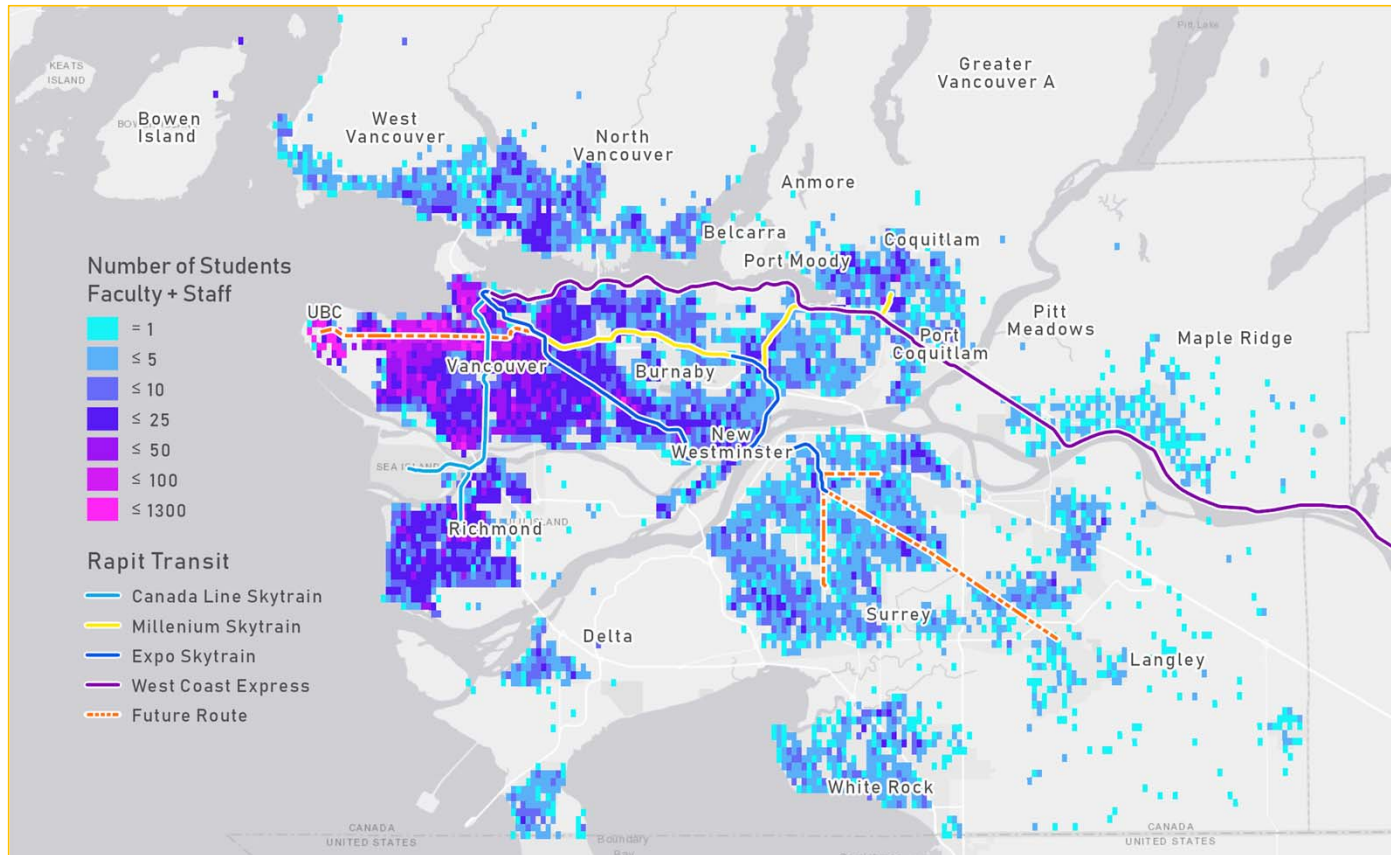
Almost half of UBC-bound commuters come from outside Vancouver.

Notes:

1. UBC commuters make an average of 2.25 trips daily
2. Many UBC neighbourhood residents commute to other parts of the region

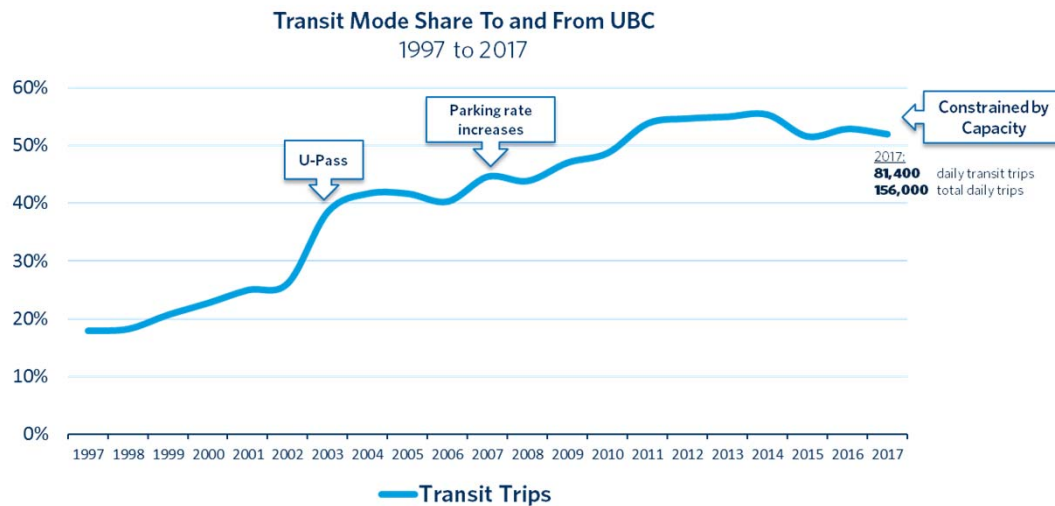


WHERE UBC LIVES



CONGESTION

In 2017 we saw our transit mode share to and from UBC begin to decline due to transit capacity constraints.



- SkyTrain to UBC will:
 - boost regional transit ridership by more than 54,000 new trips/day
 - remove 2,000 peak hour auto trips from the road network
 - reduce lifecycle GHG emissions by 335 kilotonnes



TACKLING HOUSING AFFORDABILITY

24,000

people living on campus.

12,000 in student housing,
12,000 in our neighbourhoods.



UBC is Metro Vancouver's
largest provider of workforce
housing with nearly

1,200

units for faculty and staff programs



- Metro Vancouverites spend 40% - 49% of their pre-tax income on housing and transportation
- UBC has more on-campus student housing than any university in Canada:
 - Currently there are 12,000 student residence beds
 - Planned and under construction projects will add another 2,700 beds by 2022
- A full 2/3 (1034 units) of UBC's next neighbourhood will be allocated to faculty and staff housing, and will include a range of housing opportunities including a rent-geared-to-income option.



TACKLING HOUSING AFFORDABILITY

- UBC will continue to expand all forms of on-campus housing but will not be able to fully meet the demand.
 - The waitlist for on-campus student housing reaches around 6,000 names at its peak each year.
 - Thousands of students living on-campus come from across Metro Vancouver, many making the move because the commute from their homes would have been intolerable.
- SkyTrain to UBC will open housing options along the line and improve access to the university for all Metro Vancouver residents.

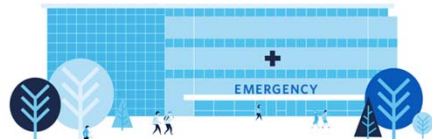


UBC'S IMPACT ACROSS THE METRO VANCOUVER REGION

UBC faculty, staff and students teach, research, work and learn across the Metro Vancouver region:

22 medical training sites

in Metro Vancouver
for the UBC distributed
medical program



20 law clinics

running across the region by
the Allard School of Law



- Countless students complete co-op, internship and work placements with organizations throughout the region
- More than 147,000 alumni contribute to the regional economy, working and living throughout Metro Vancouver



UBC'S IMPACT ACROSS THE METRO VANCOUVER REGION

The activities of the university drive economic growth for the region:

2,500

annual research collaborations with industry, government, and non-profit partners



207 local companies

have spun off from UBC research creating new jobs and generating economic benefits for the region



\$11.5 billion

estimated value of sales of products incorporating UBC discoveries



- SkyTrain to UBC will connect the region's academic, research, health, innovation and employment centres further enabling collaborations and partnerships that deliver economic value for the region and address pressing social issues



UBC IS A PARTNER

- UBC continues to be committed to pursuing the line's completion to the Point Grey campus through the Board of Governors' approved strategy of business partnerships, technical collaboration and coordinated advocacy.
- The university is exploring a material contribution to the regional share of the project, provided the contribution does not affect funding for UBC's academic mission. A UBC contribution to rapid transit could take many forms, including:
 - Land for stations
 - Transit-enabled revenue through more people accessing the campus for recreation, cultural and other services
 - Charges collected from developers – like other municipalities, UBC collects charges from market land development, some of which could support rapid transit construction costs.



RAIL TO UBC REPORT



- The evidence clearly supports SkyTrain as the only option that will meet the long-term transportation demands of the corridor and the growing region, and at the same time strongly supporting the affordability, sustainability and prosperity goals of our communities
- The decision on SkyTrain technology creates the best chance to accelerate seamless completion of the line and the opportunity to coordinate advocacy for funding investments.
- UBC will continue to work with TransLink, City of Vancouver, province and others to advance planning.

