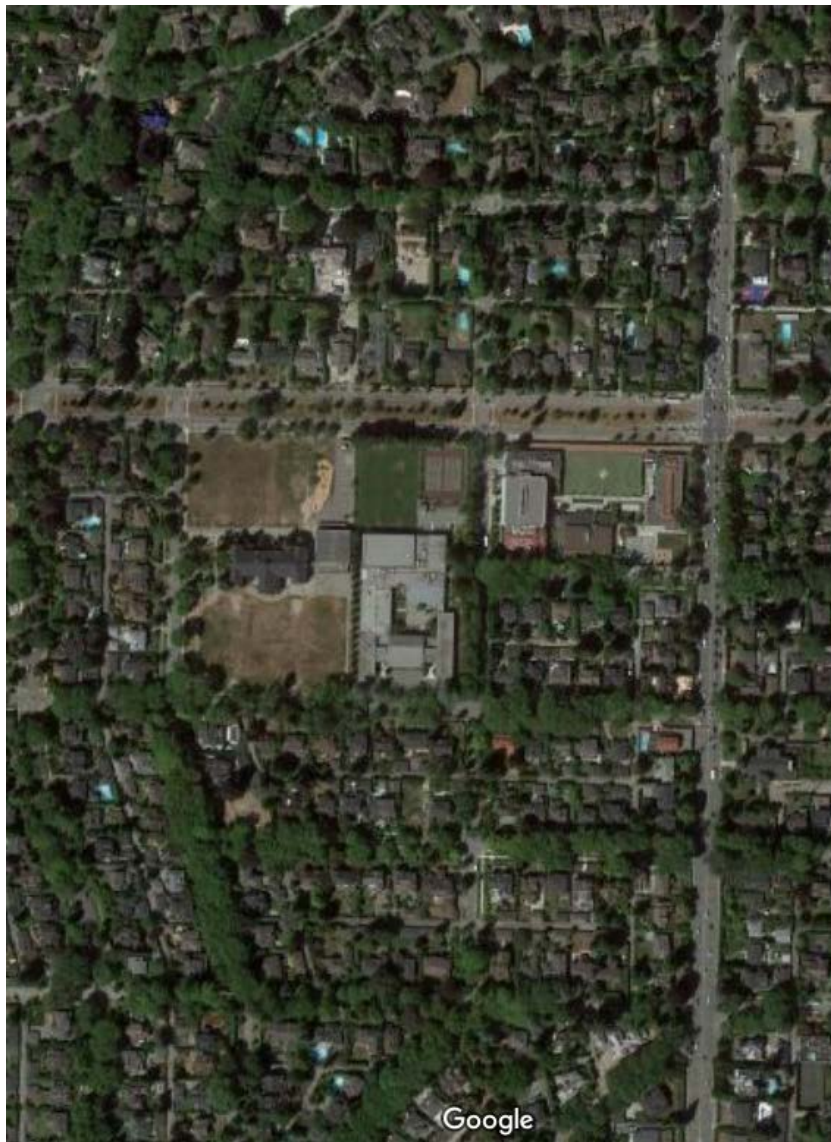




CD-1 Text Amendment:

4176 Alexandra Street (York House School)

York House/Little Flower/Shaugnessy (*proposed*)



2004-2005	2016-2017	Change
1,560	1,498 (1,588)	-62 (+28)

Lord Byng/Quesnel

2004-2005	2016-2017	Change
1,598	1,740	+142

Point Grey/Quilchena

2004-2005	2016-2017	Change
1,660	1,327	-333

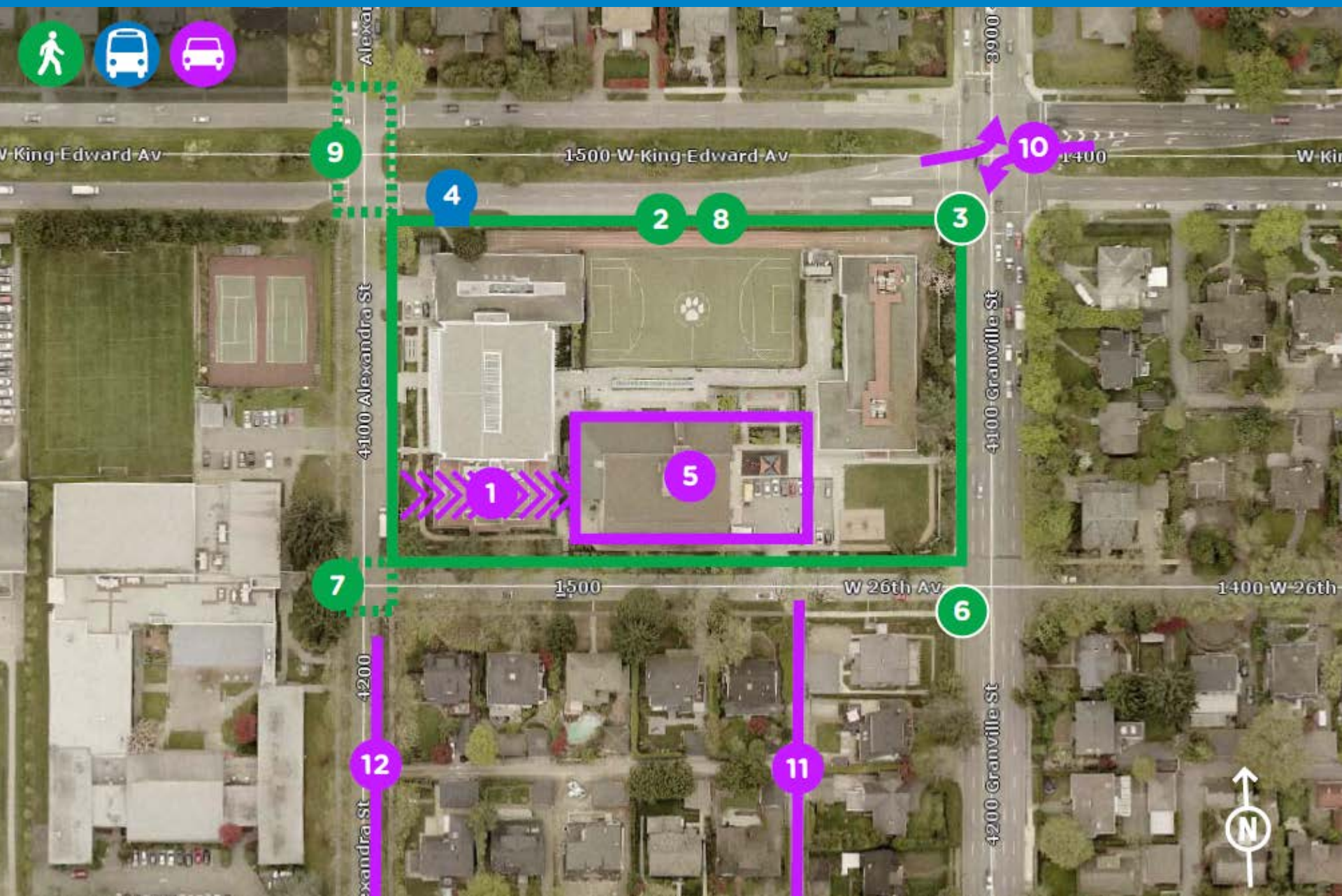
Magee/Maple Grove

2004-2005	2016-2017	Change
1,675	1,589	-86

Churchill/Laurier

2004-2005	2016-2017	Change
2,342	2,340	-2

Location-Specific Physical Infrastructure Improvements



9

4

2

8

3

10

7

1500

W 26th Av

6

1400 W-26th

12

11

5

1

W King-Edward Av

1500 W King-Edward Av

4400

W Kin

4100 Alexandra St

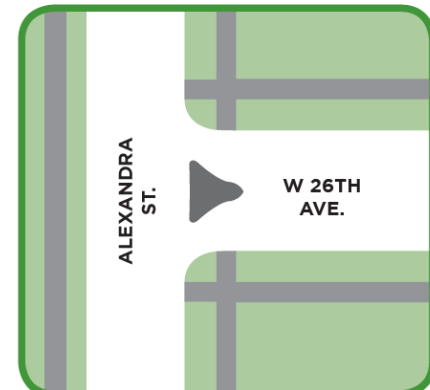
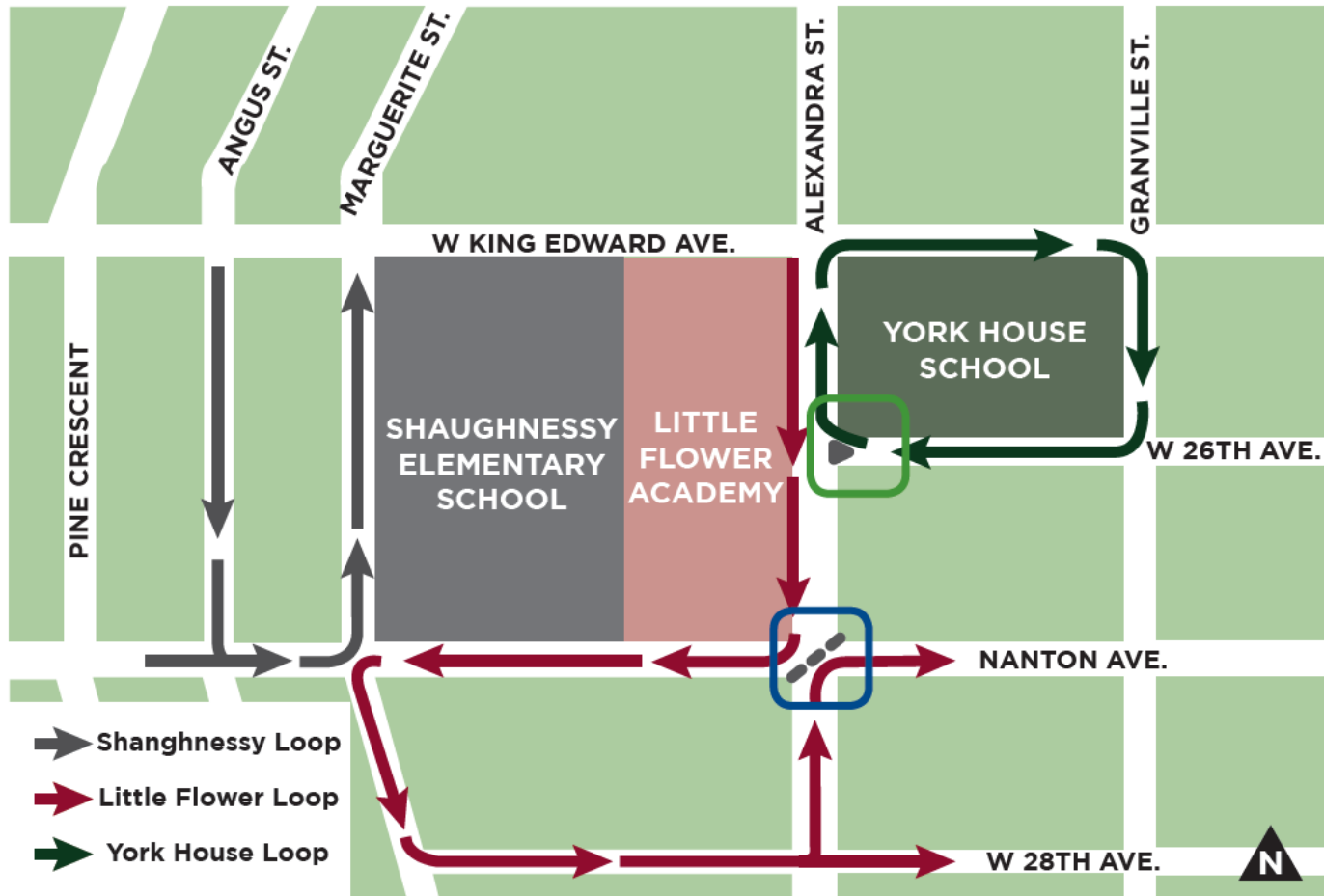
4100 Granville St

4200 Alexandra St

4200 Granville St



Potential Scenario: Traffic Calming Measures



Right-in/right-out diverter added to Alexandra St. and W 26th Ave.



Diagonal diverter added to Alexandra St. and Nanton Ave.

- \$250,000 for transportation improvement measures
- Staff are able to test and review traffic impacts
- Need to consult with local community on solutions

- Numerous recommendations to address traffic congestion, including physical infrastructure, regulatory, and management improvements.
- Ongoing monitoring
 - Operations Management Plan, including the Neighbour Relations Committee
 - Transportation Management Plan, including post-occupancy reports to City staff

