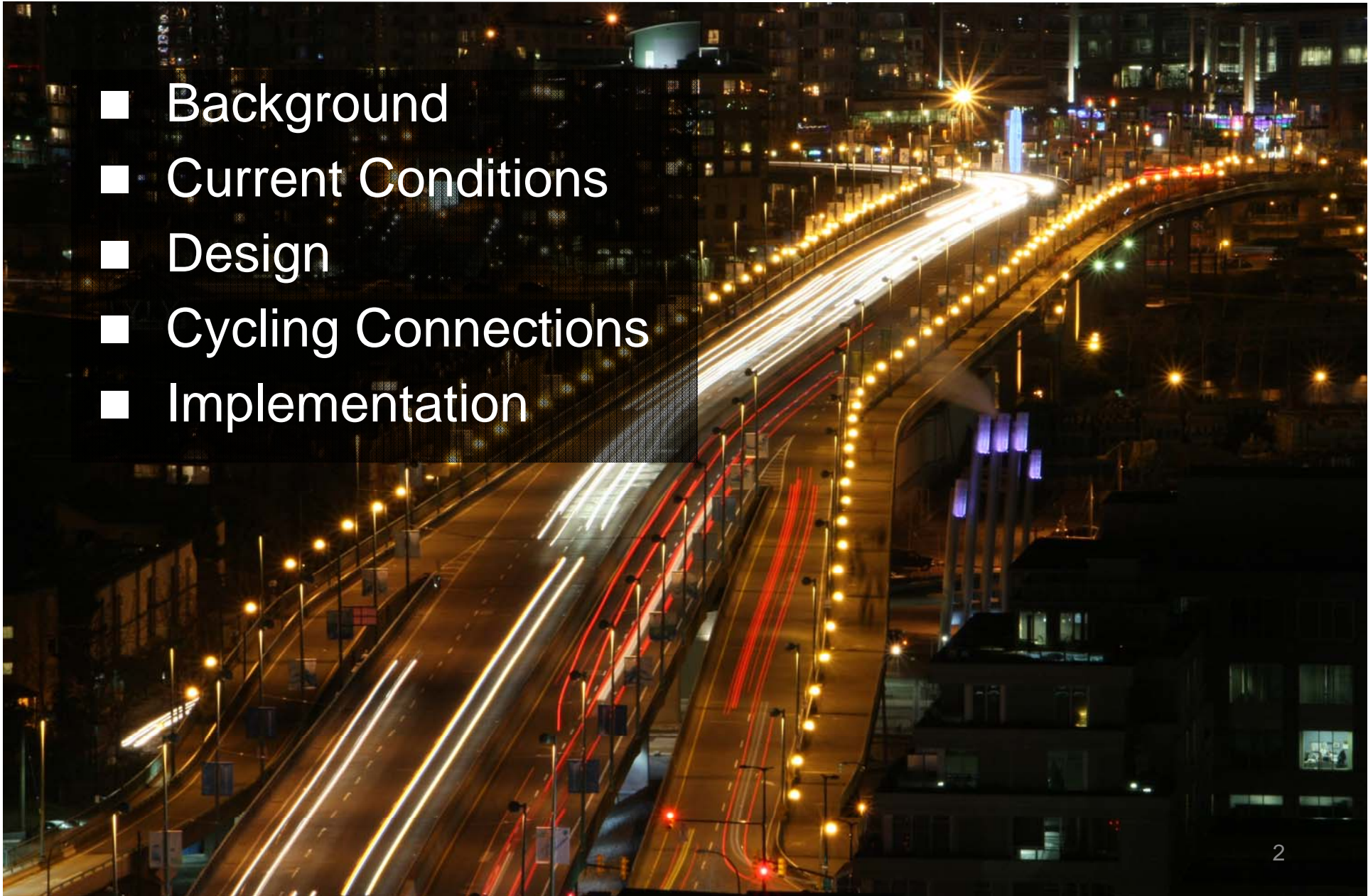


Cambie Bridge Interim Active Transportation Improvements



- Background
- Current Conditions
- Design
- Cycling Connections
- Implementation





Background

Background

- East sidewalk built ~4m wide for BC Place
- Opened to cycling as shared path in 1990's
- Walking/cycling improvements identified in 1997 and later transportation plans



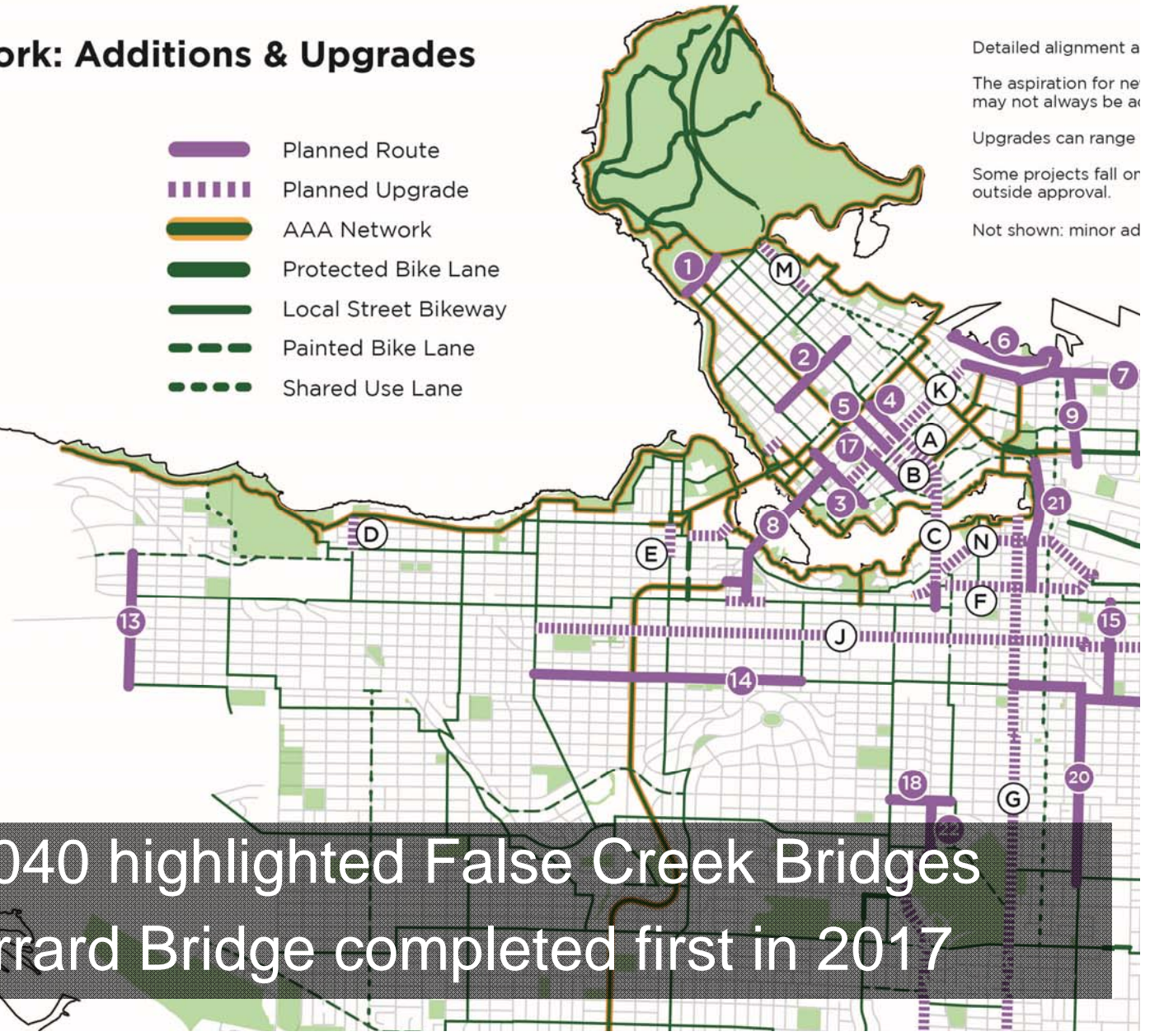
Background



5-Year Cycling Network: Additions & Upgrades 2018-2022

| Planned Routes | |
|------------------|------------------------|
| 1 | Park Lane* |
| 2 | Bute |
| 3 | Drake |
| 4 | Smithe |
| 5 | Nelson |
| 6 | West Waterfront Road** |
| 7 | Water-Alexander-Powell |
| 8 | Granville Bridge |
| 9 | Gore |
| 10 | Hudson |
| 11 | Kent |
| 12 | Commercial |
| 13 | Blanca |
| 14 | 14th Ave |
| 15 | St. George Rainway |
| 16 | Duchess-Wales* |
| 17 | Helmcken |
| 18 | King Edward |
| 19 | Pandora-Semlin |
| 20 | Prince Edward |
| 21 | Quebec |
| 22 | Cambie |
| 23 | Stainsbury |
| Planned Upgrades | |
| A | Smithe |
| B | Nelson |
| C | Cambie Bridge |
| D | Highbury |
| E | Cypress |
| F | 5th Ave |

- Planned Route
- Planned Upgrade
- AAA Network
- Protected Bike Lane
- Local Street Bikeway
- Painted Bike Lane
- Shared Use Lane



Detailed alignment a
 The aspiration for ne
 may not always be a
 Upgrades can range
 Some projects fall or
 outside approval.
 Not shown: minor ad

■ T2040 highlighted False Creek Bridges
 ■ Burrard Bridge completed first in 2017

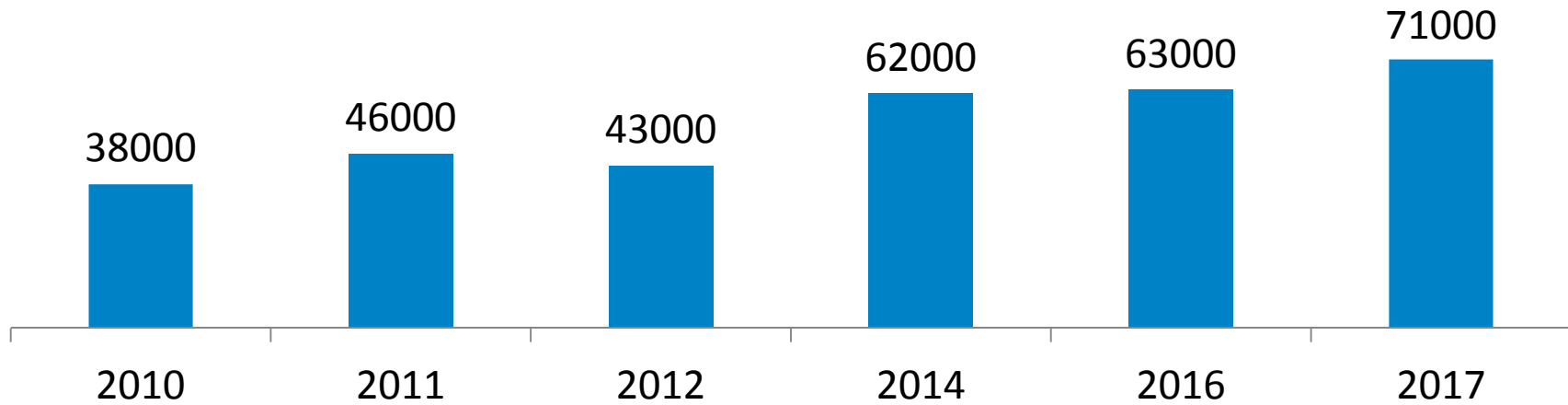
A photograph of a busy bridge with pedestrians and cyclists, overlaid with a blue semi-transparent banner containing the text "Current Conditions". The scene is bright and sunny, with a clear blue sky. In the background, there are modern high-rise buildings and a body of water. The bridge has a green railing and a paved path. People are walking and cycling in both directions. A woman in a black tank top and shorts is walking on the left. A man with a backpack is walking away from the camera. A cyclist in a yellow shirt is riding towards the camera. The text "Current Conditions" is written in white on the blue banner.

Current Conditions

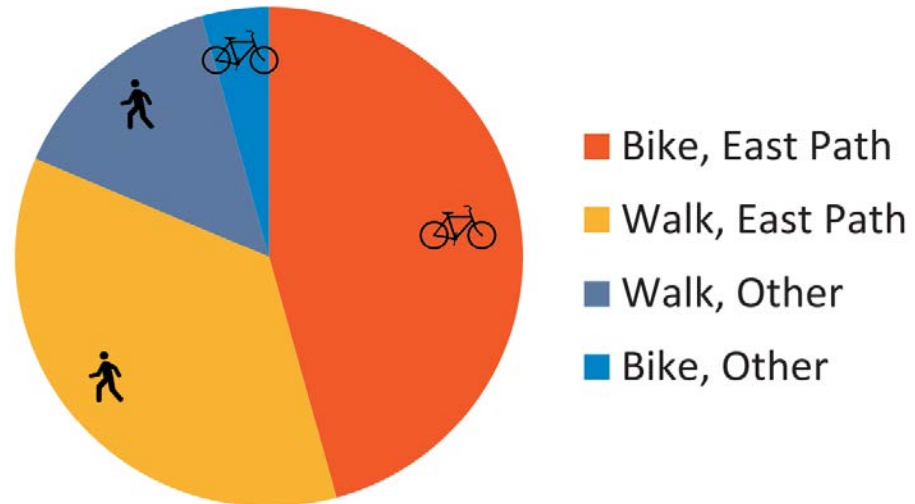
Current Conditions



June Bicycle Counts Cambie Bridge east side shared path



Typical Walking and Cycling Distribution



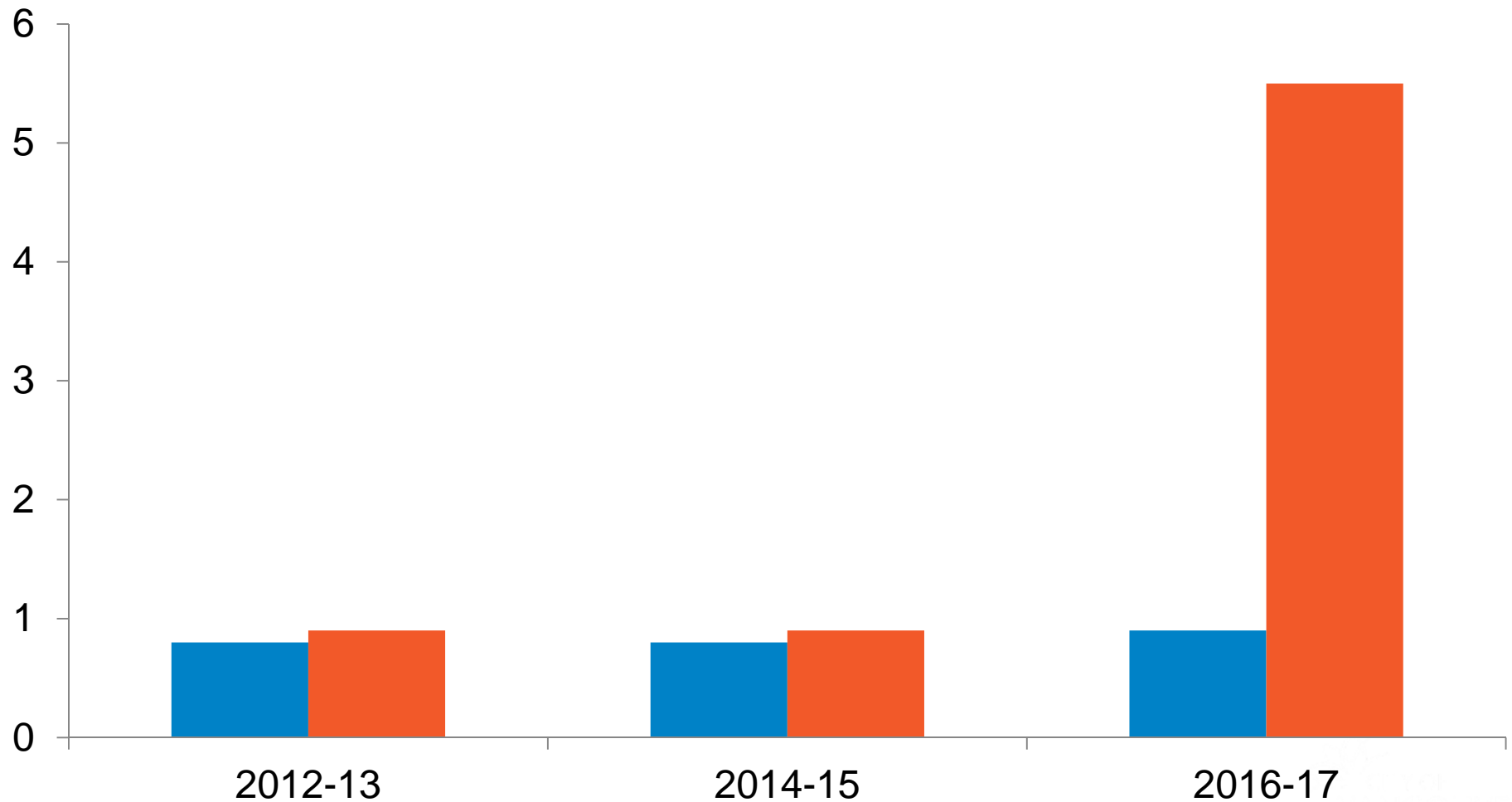
Current Conditions



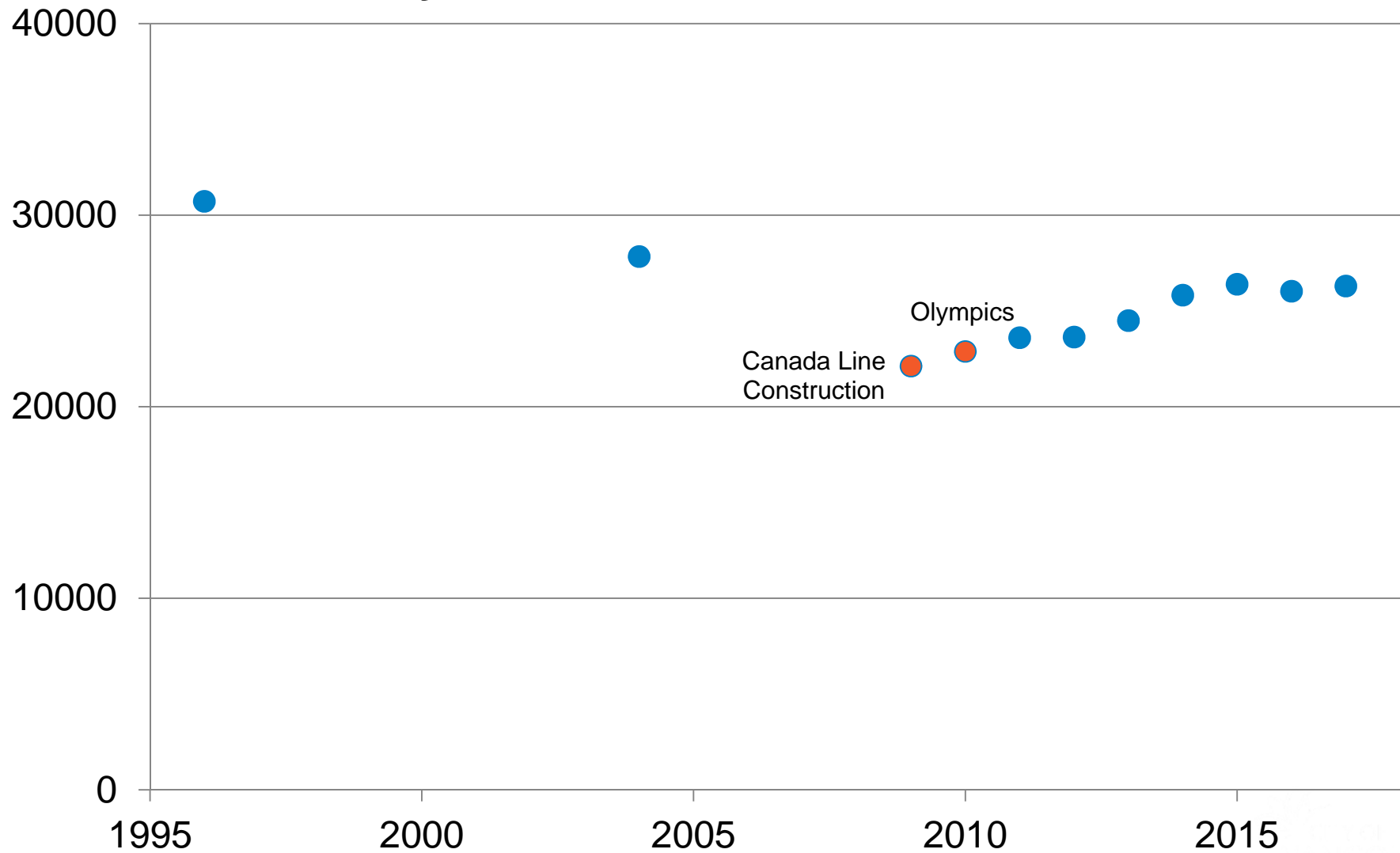
| Location | Record midweek daily bike volume | Count year | Dedicated Width for Cycling |
|------------------|----------------------------------|------------|-----------------------------|
| Burrard Bridge | 7,100 | 2015 | 5m |
| Cambie Bridge | 3,200 | 2017 | N/A |
| Hornby Street | 3,200 | 2017 | 3m |
| Dunsmuir Viaduct | 3,100 | 2017 | 3-4m |
| Dunsmuir Street | 2,700 | 2015 | 3-4m |

Minor Walking/Cycling Injuries per km

■ Seawall ■ Cambie Bridge



Weekday Southbound Motor Vehicle Volumes

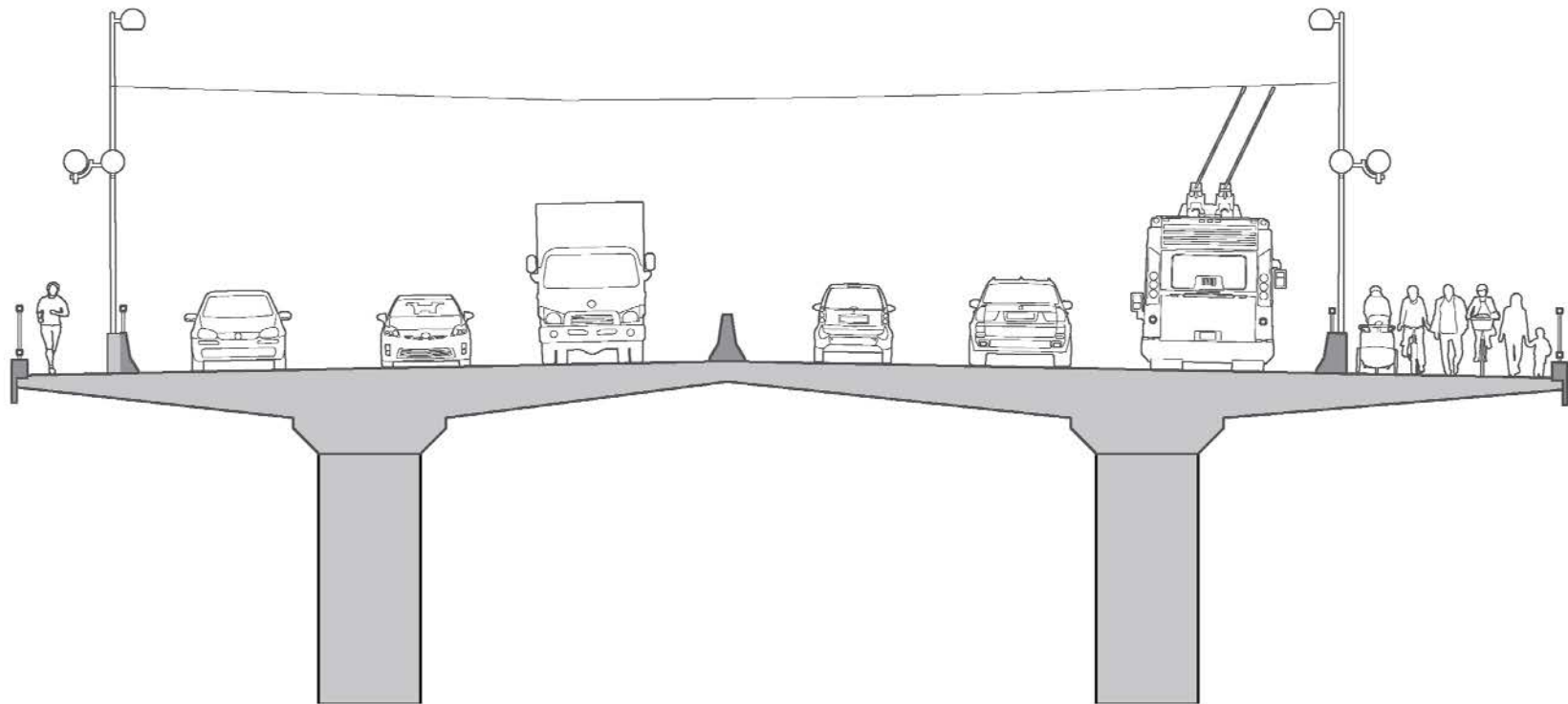




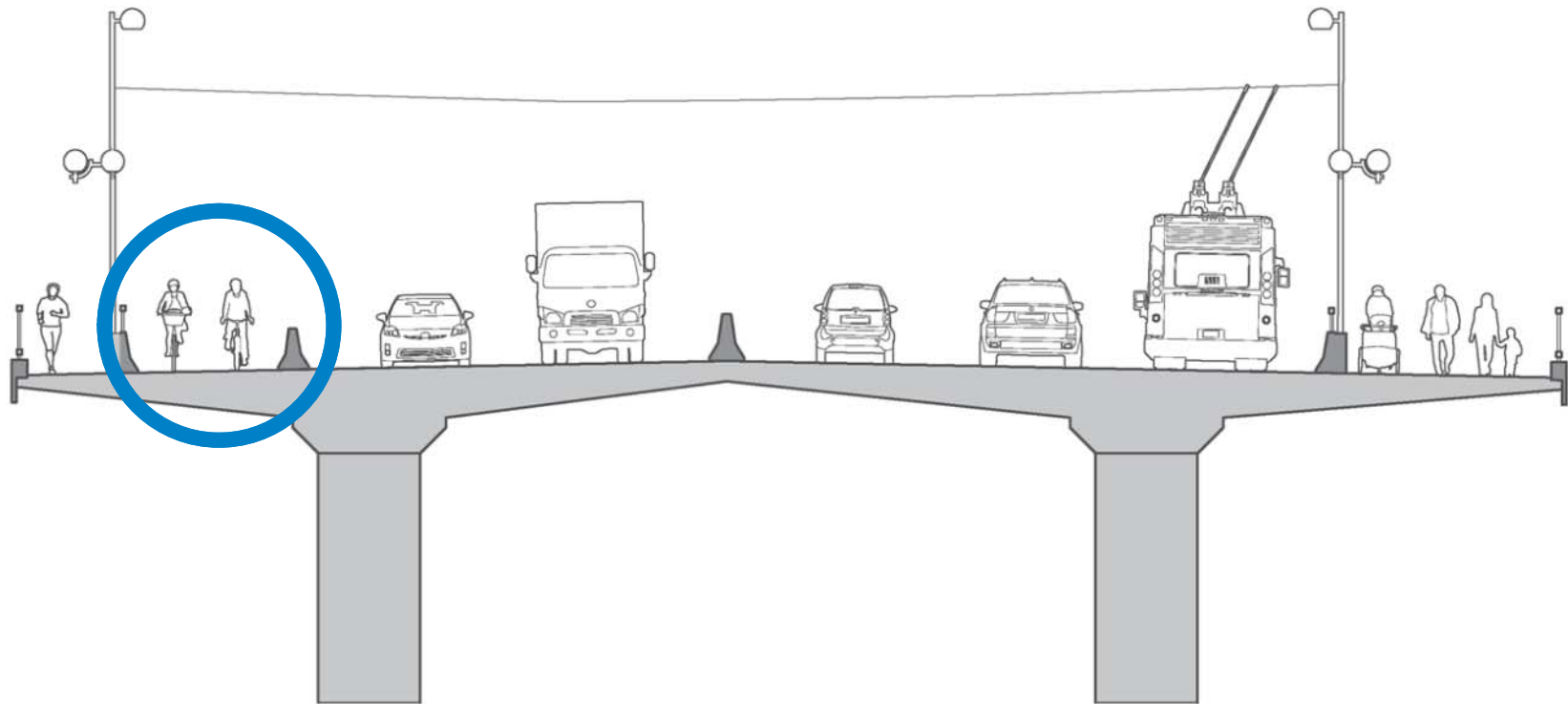
Design



Design: Midspan Before



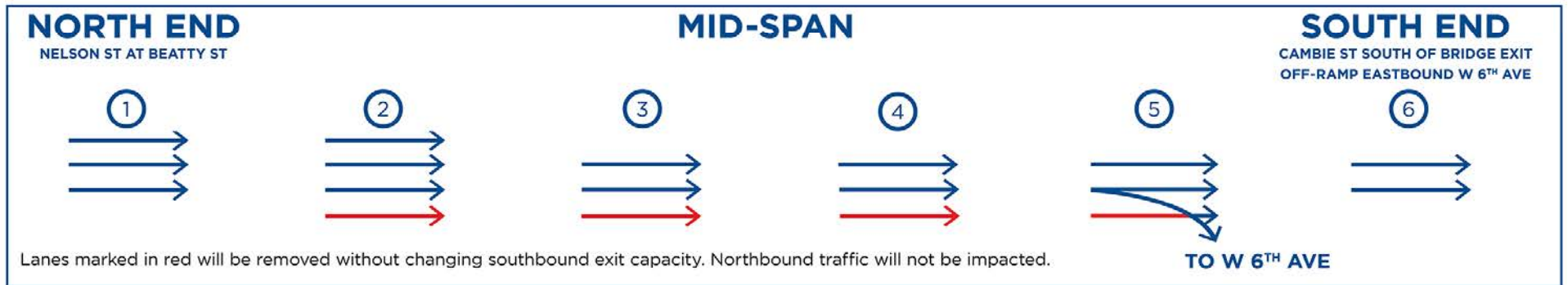
Design: Midspan After



Design: Overview



CHANGES TO SOUTHBOUND LANE



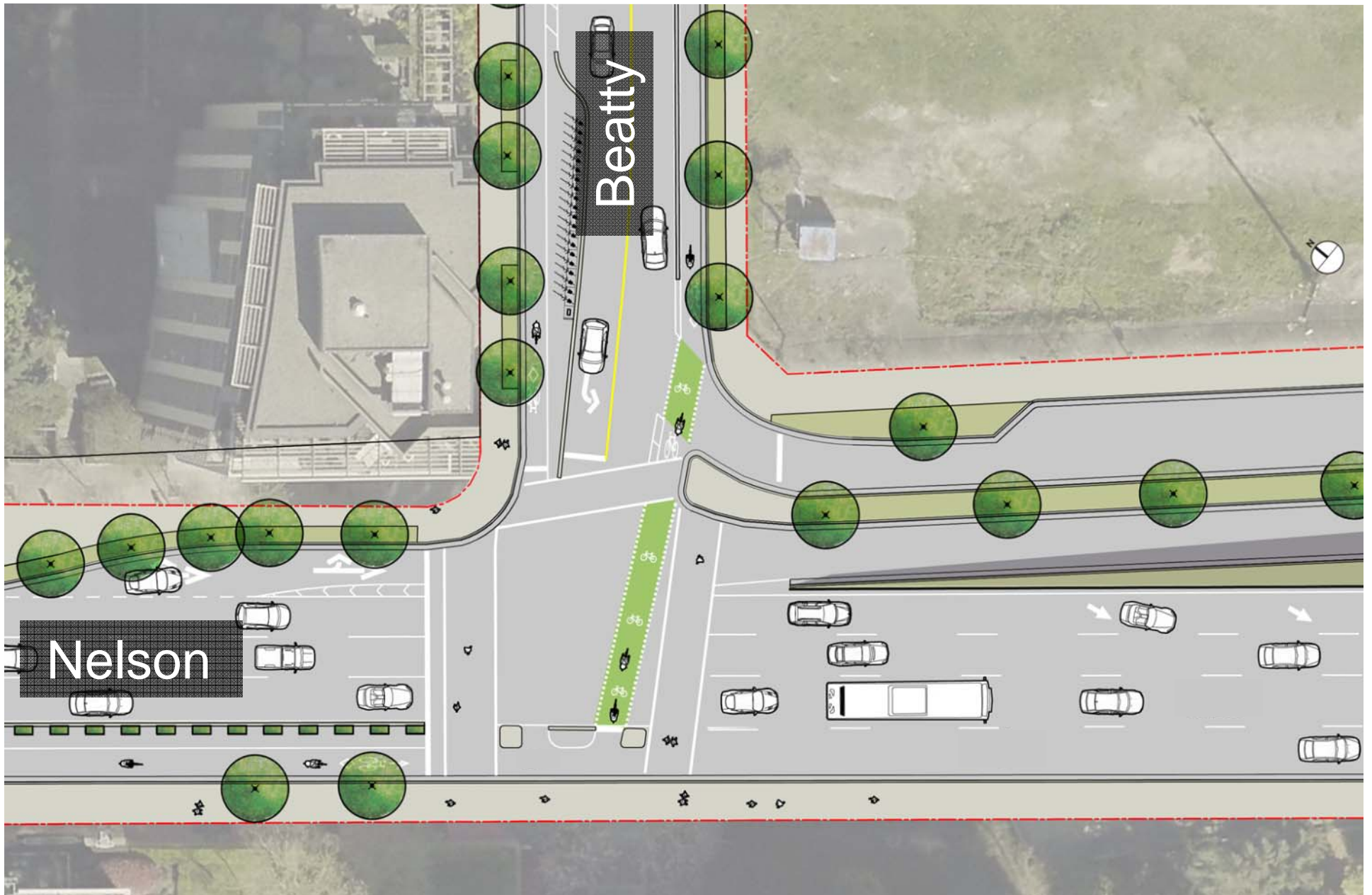
Design: Motor Vehicle Capacity



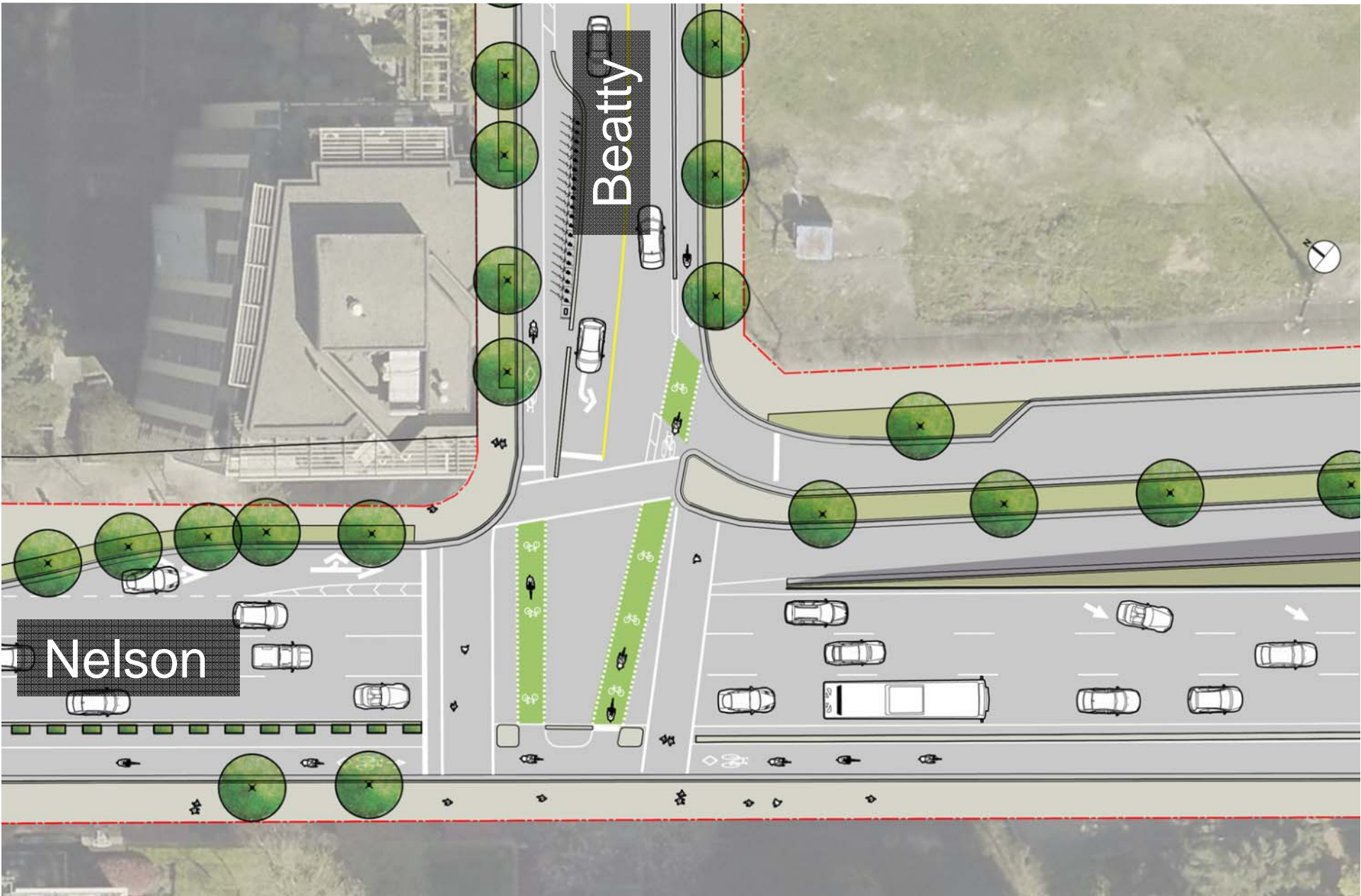
Design: Motor Vehicle Capacity



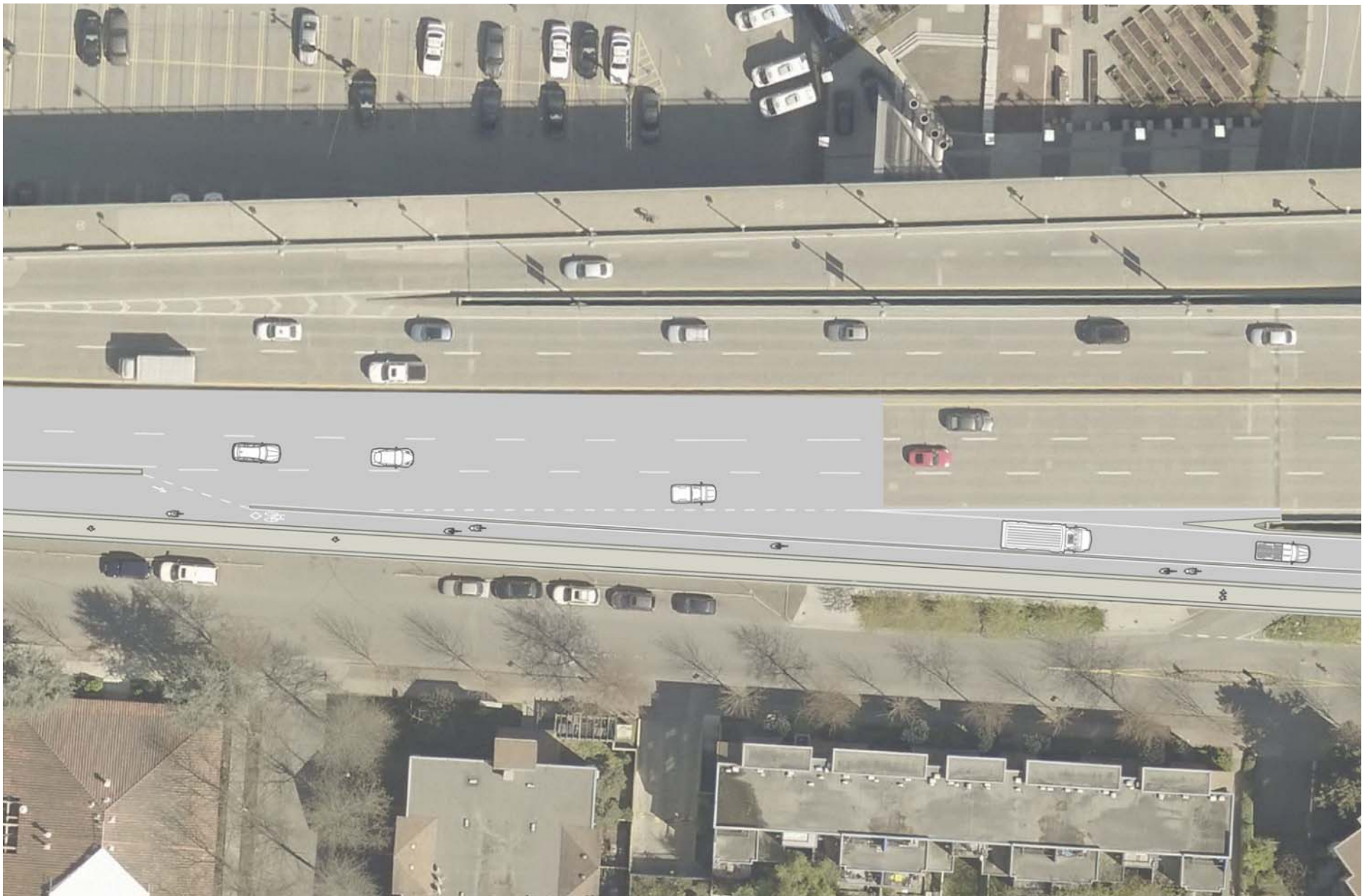
Design: North End Before



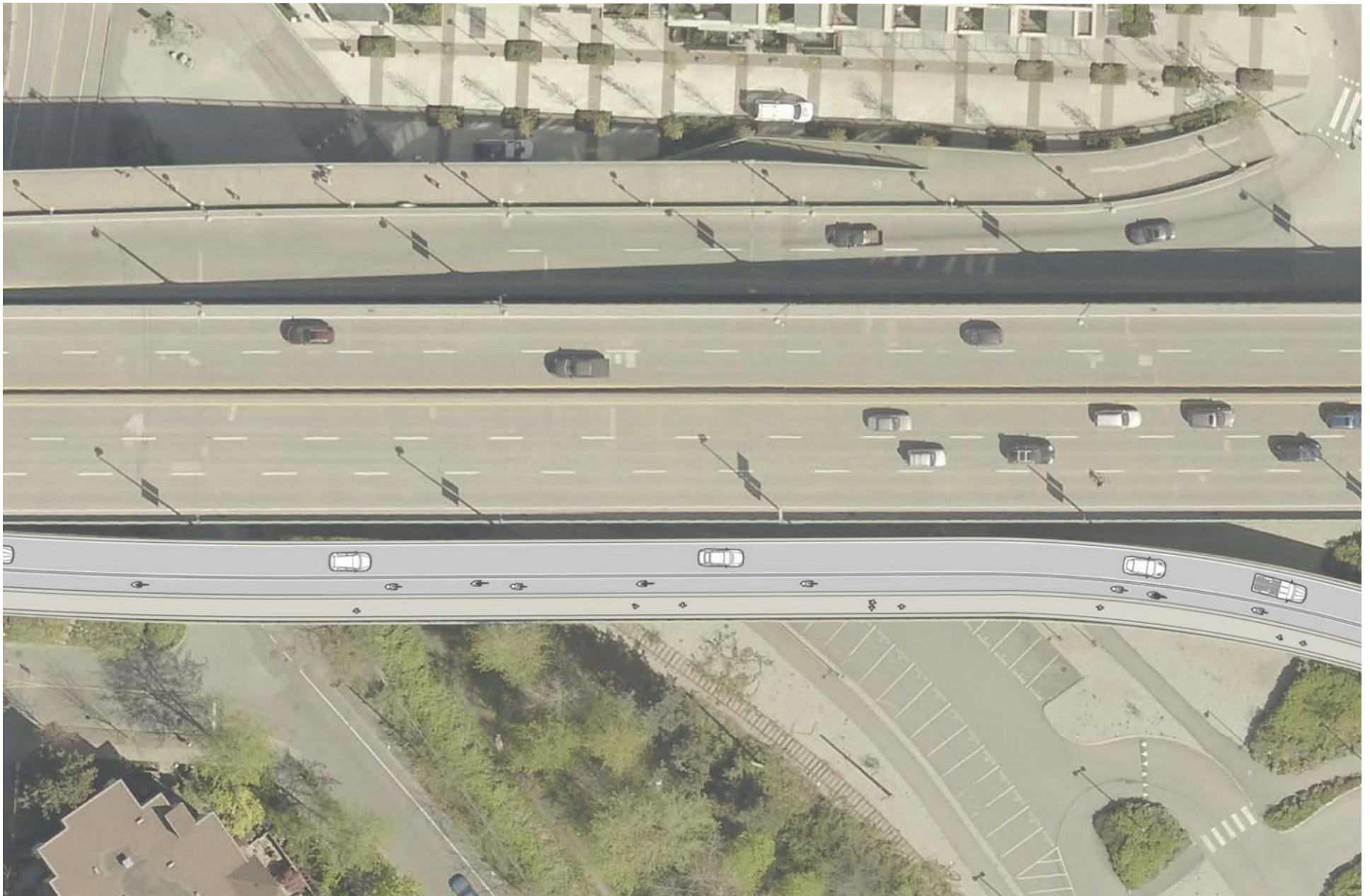
Design: North End After



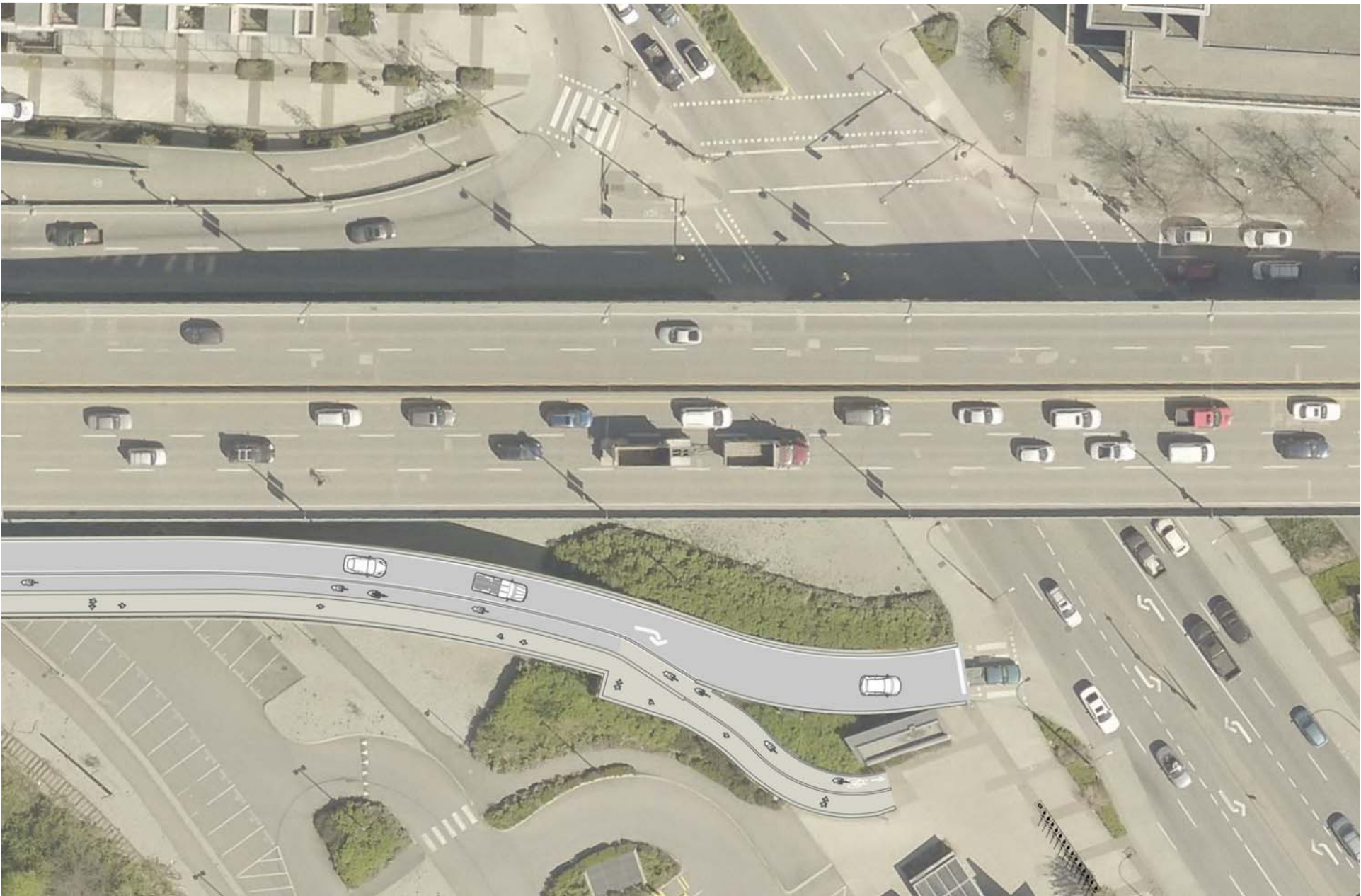
Design: South End



Design: South End



Design: South End



Design Refinements

CAMBIE BRIDGE: W 6TH AVE CONNECTION

What is Different?

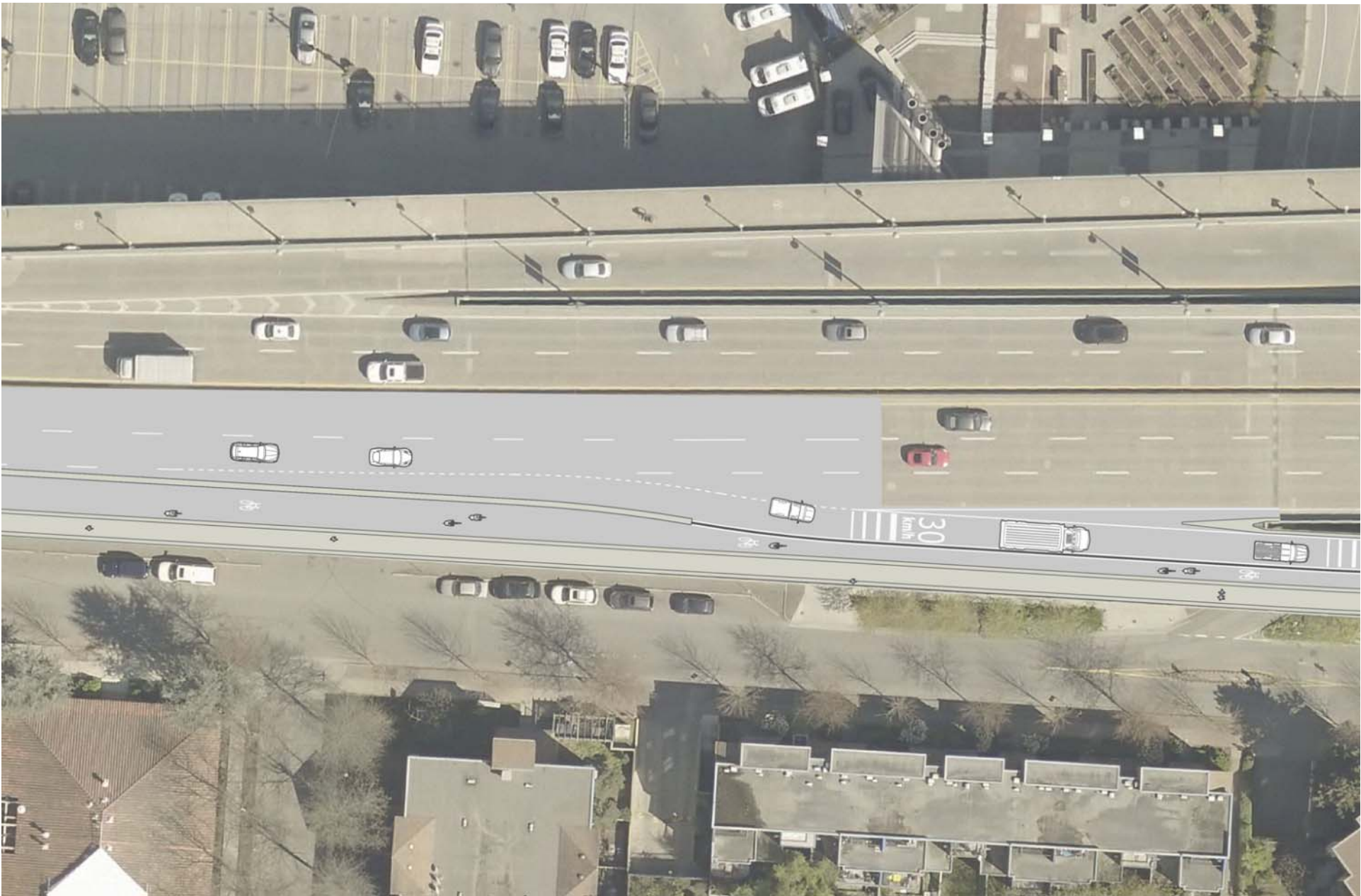
- 1 Extend southbound protected bike lane to the west off-ramp
- 2 Narrow the protected bike lane to the west
- 3 Use flexible rather than concrete reinforced fence or concrete

Why?

- With motor vehicle traffic and provide an off-Broadway Bikeway on W 5th Ave and
- space for a protected bike lane on the relative
- is toward the end of the bridge
- minimize the amount of space required and acco
- the off-ramp
- To make use of existing space and avoid
- To adapt to changing conditions, for exa
- in front of the Canada Line station and p

CITY OF VANCOUVER

Design Refinements: Pre-Engagement





1. Width for emergency and maintenance
2. Open up to three lanes sooner
3. Physical separation on ramp/sidewalk

Design Refinements: Ramp Width Test



■ Ocean Concrete

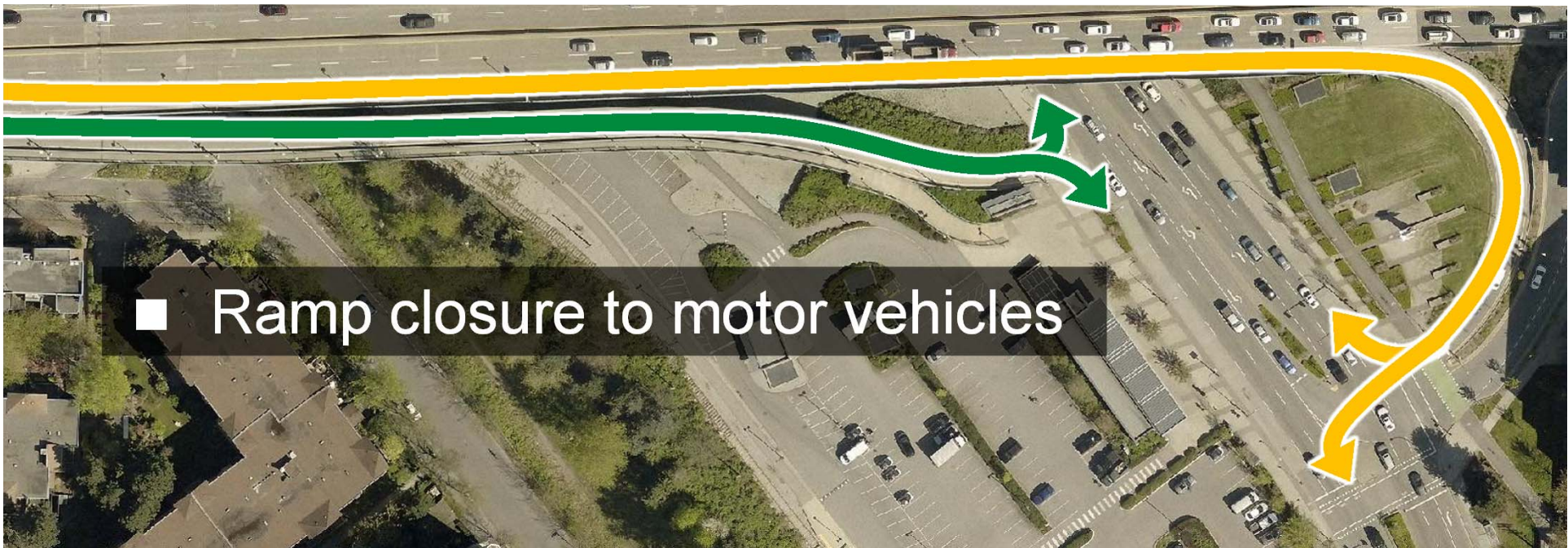


■ Sanitation Semi

Design Refinements: Alternatives Explored



■ Ramp widening



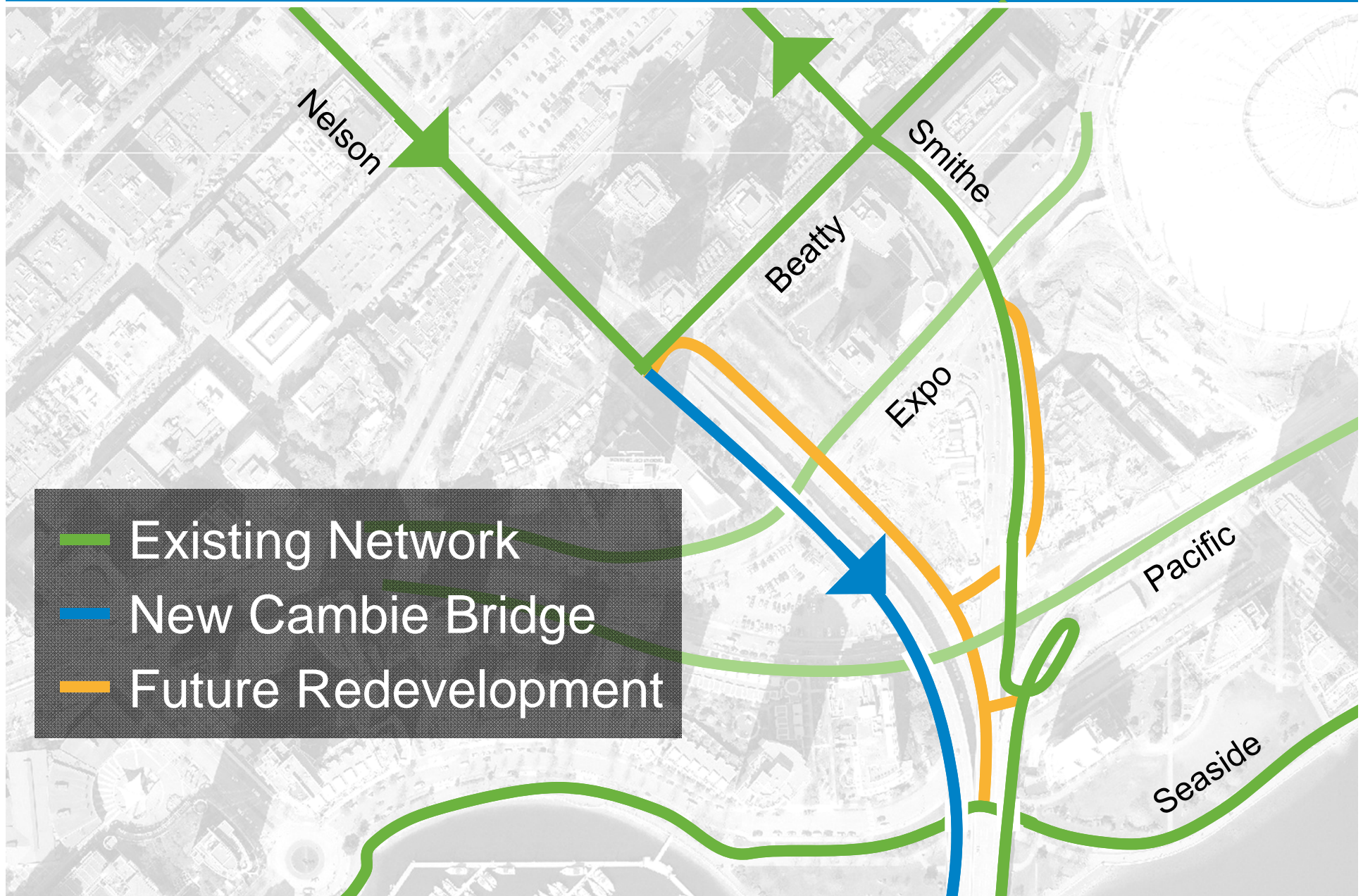
■ Ramp closure to motor vehicles



Related Cycling Connections

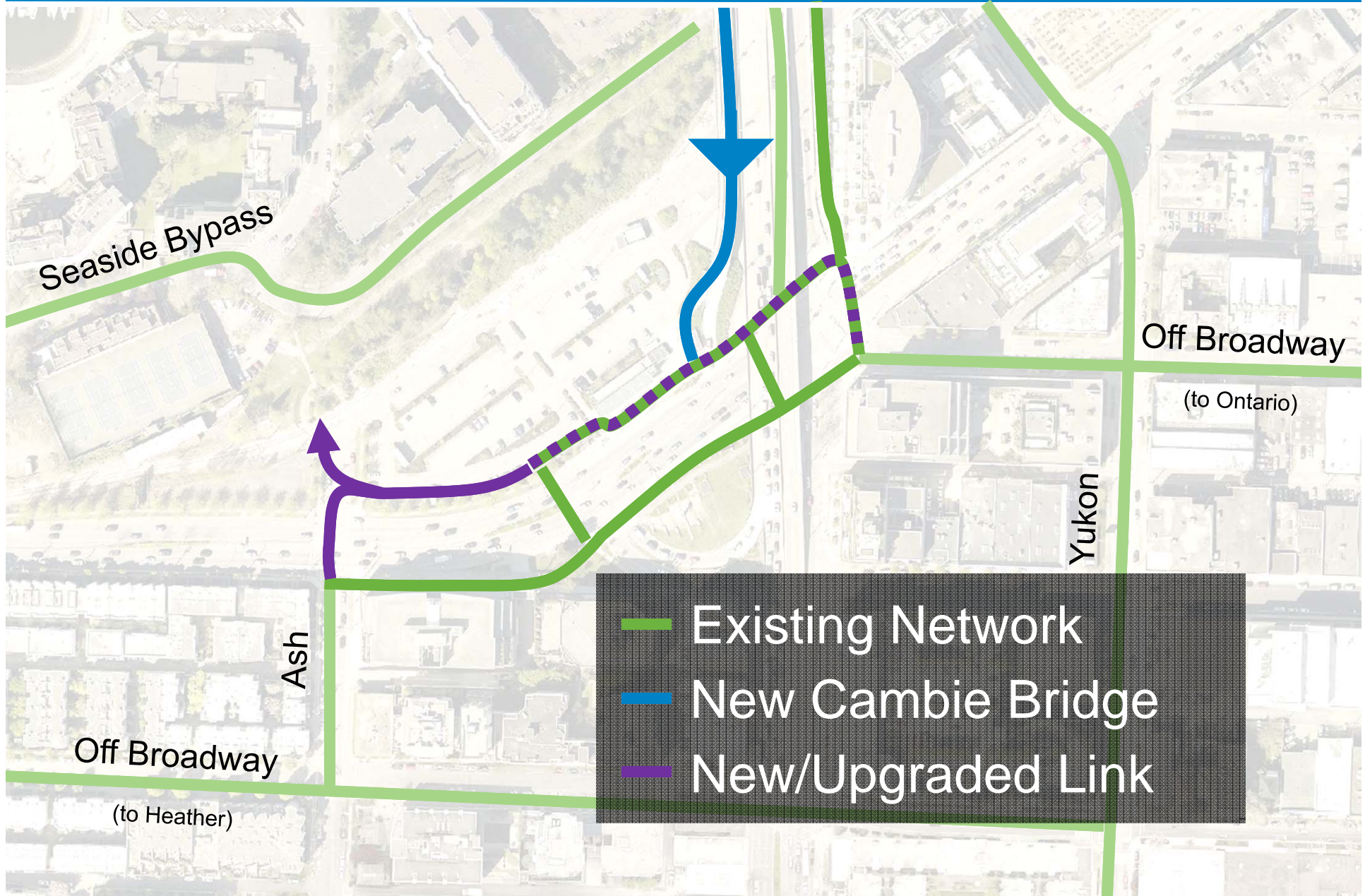


Related Cycling Connections: North



- Existing Network
- New Cambie Bridge
- Future Redevelopment

Related Cycling Connections: South






Implementation

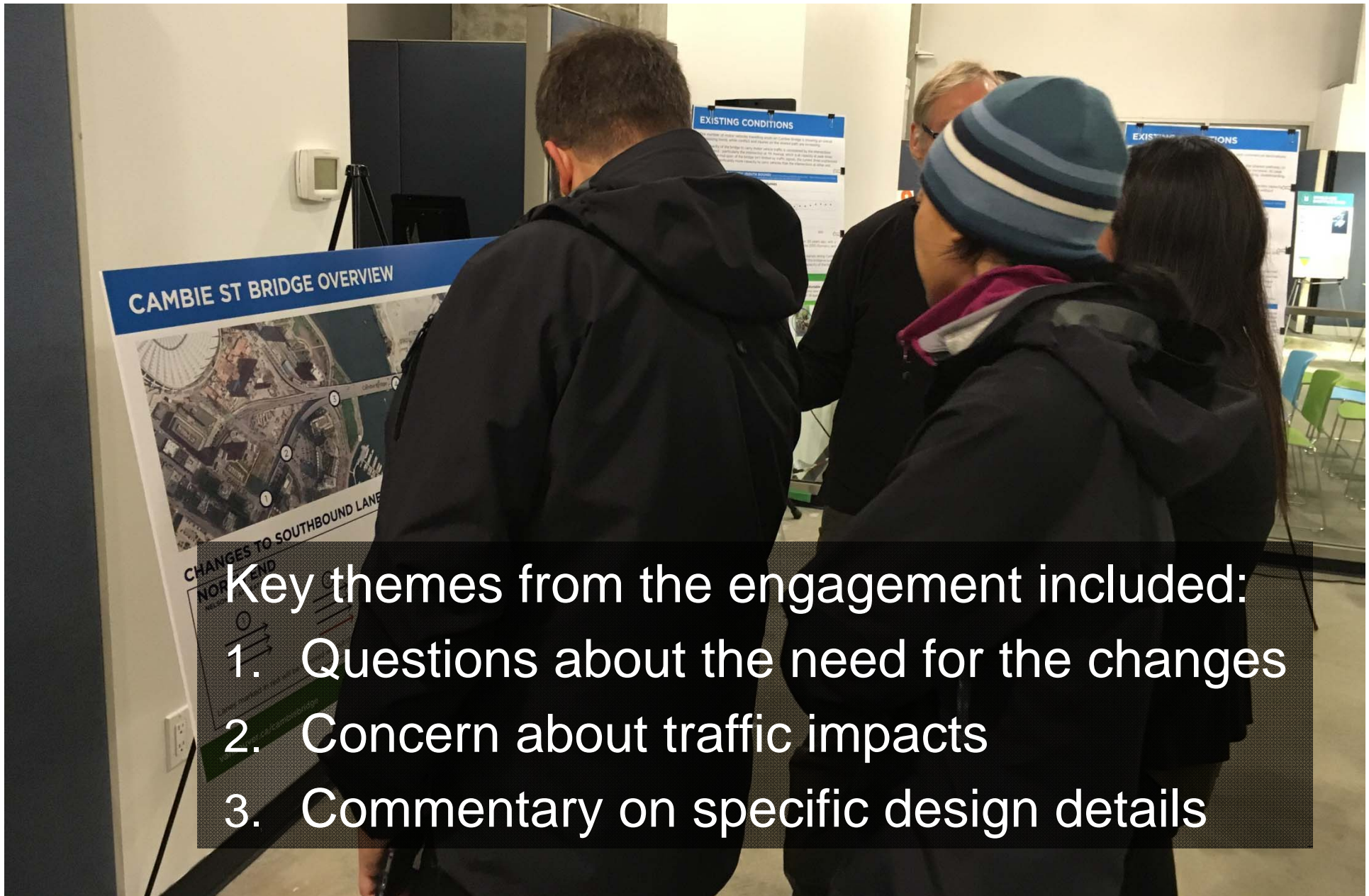


Implementation

- 
- Changes to the bridge ~\$400k
 - Changes at south end ~\$200k
 - Funded from approved 2018 AT Corridors
 - Construction relatively quick (Q2 2018)
 - Monitoring volumes, travel times, queues
 - Report results back to Council in 2019

Cambie Bridge Interim Active Transportation Improvements





Key themes from the engagement included:

1. Questions about the need for the changes
2. Concern about traffic impacts
3. Commentary on specific design details