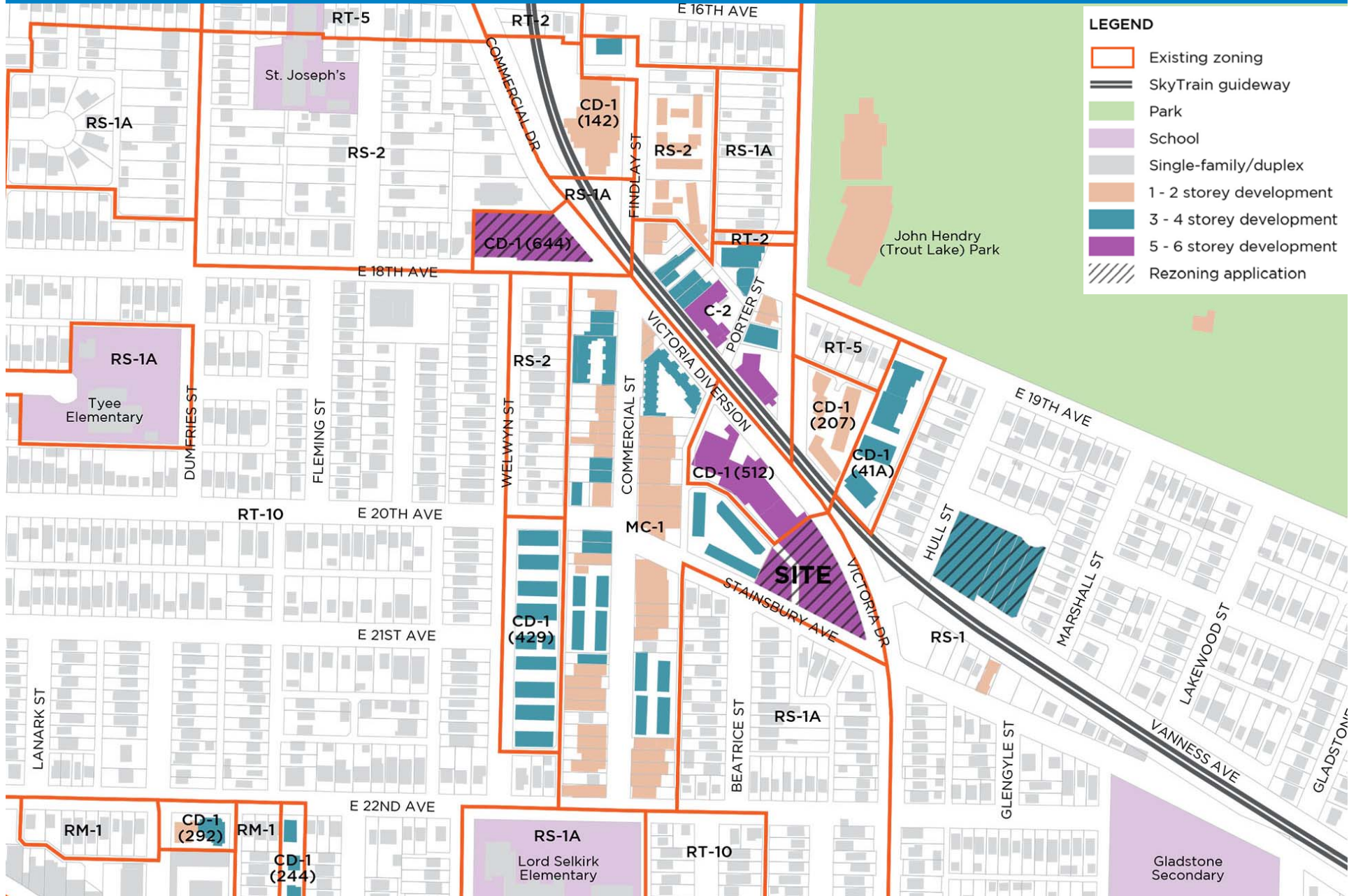




CD-1 Rezoning: 3681 Victoria Dr & 1915 Stainsbury Ave
Public Hearing | November 14, 2017

Site and Context



Proposed Development

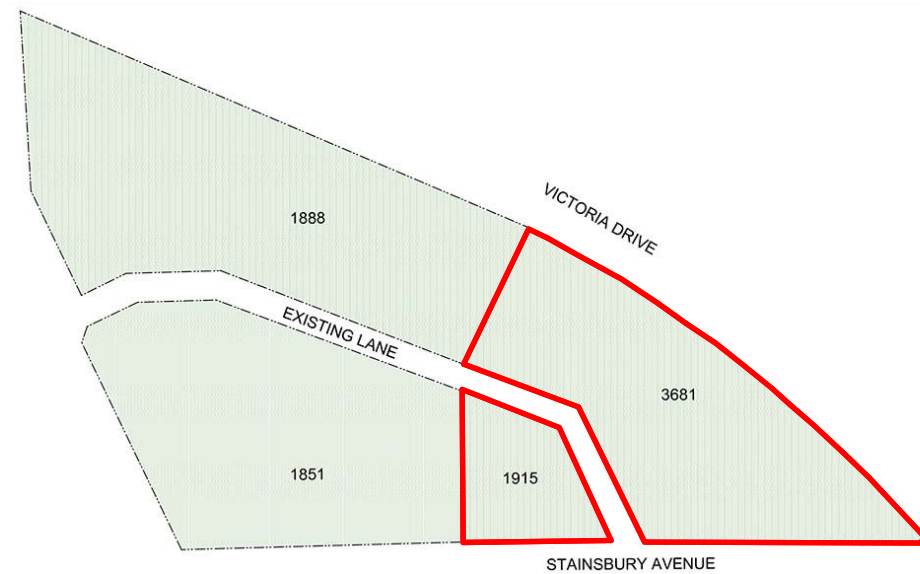


STAINSBURY AVE

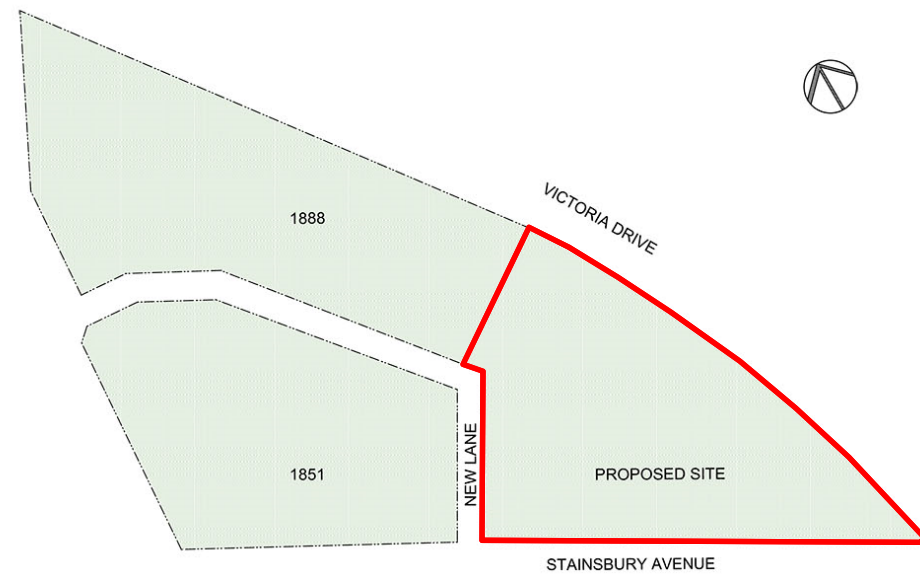
Site Consolidation and Lane Re-configuration



Current site configuration



Proposed site configuration for consolidated site



Support for the application:

- Need for more rental housing in the city
- Need for more affordable housing

Comments and concerns raised:

- Impacts of lane re-configuration on adjacent strata building
- Lack of parking in the area
- Heights should not exceed surrounding buildings
- Commercial space should be retained
- Lack of amenities, street improvements and school capacity to accommodate growth

Public Feedback & Response

