

Pearson Dogwood Redevelopment



Vancouver
CoastalHealth

Living well.

Pearson Dogwood Redevelopment Public Hearing

Bob Chapman, Operational Director Vancouver Coastal Health

Siân Roberts, Clinical Practice Specialist Vancouver Coastal Health

July 20, 2017



Scope

VANCOUVER COASTAL HEALTH (VCH) REDEVELOPMENT COMPONENTS

George Pearson Centre Replacement

Dogwood Lodge & Adult Day Care Replacement

Therapy Pool Replacement

Community Health Centre (CHC) & Primary Care Hub

PEARSON DOGWOOD Policy Statement

February 2014

City of Vancouver Policy Statement



Pearson Dogwood Redevelopment



Vancouver
CoastalHealth

Living well.



Pearson Residents
Redevelopment Group



BC Coalition of People with Disabilities

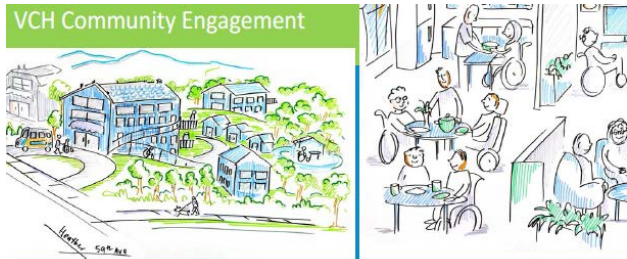
A Proposal for Housing and Support for the Pearson Redevelopment

*This proposal has been collaboratively prepared by the
Pearson Residents Redevelopment Group
Persons with Disabilities Advisory Committee
BC Coalition of People with Disabilities
December 9, 2013*

This proposal includes four housing and support options, all with people having control and autonomy over their lives. We have included the first two independent community

Pearson Dogwood Redevelopment

Engagement & Consultation



George Pearson Centre Redevelopment
**Resident & Family
Engagement Report –
Housing and Care Model**



**People with Disabilities
Advisory Council**



Blog About us Resident Council Redevelopment Group CARMA



Resident Council

Pearson Dogwood Redevelopment

Engagement & Consultation

In 2014 meetings began to co create housing and support/care models and align with Consensus Agreement

MONTHLY MEETINGS

GPC Resident Representatives, CARMA, DABC, PDAC and VCH

Support/Care Model Sub Group

Housing Design Sub Group

ENGAGEMENT SESSIONS with GPC Residents (Numerous)

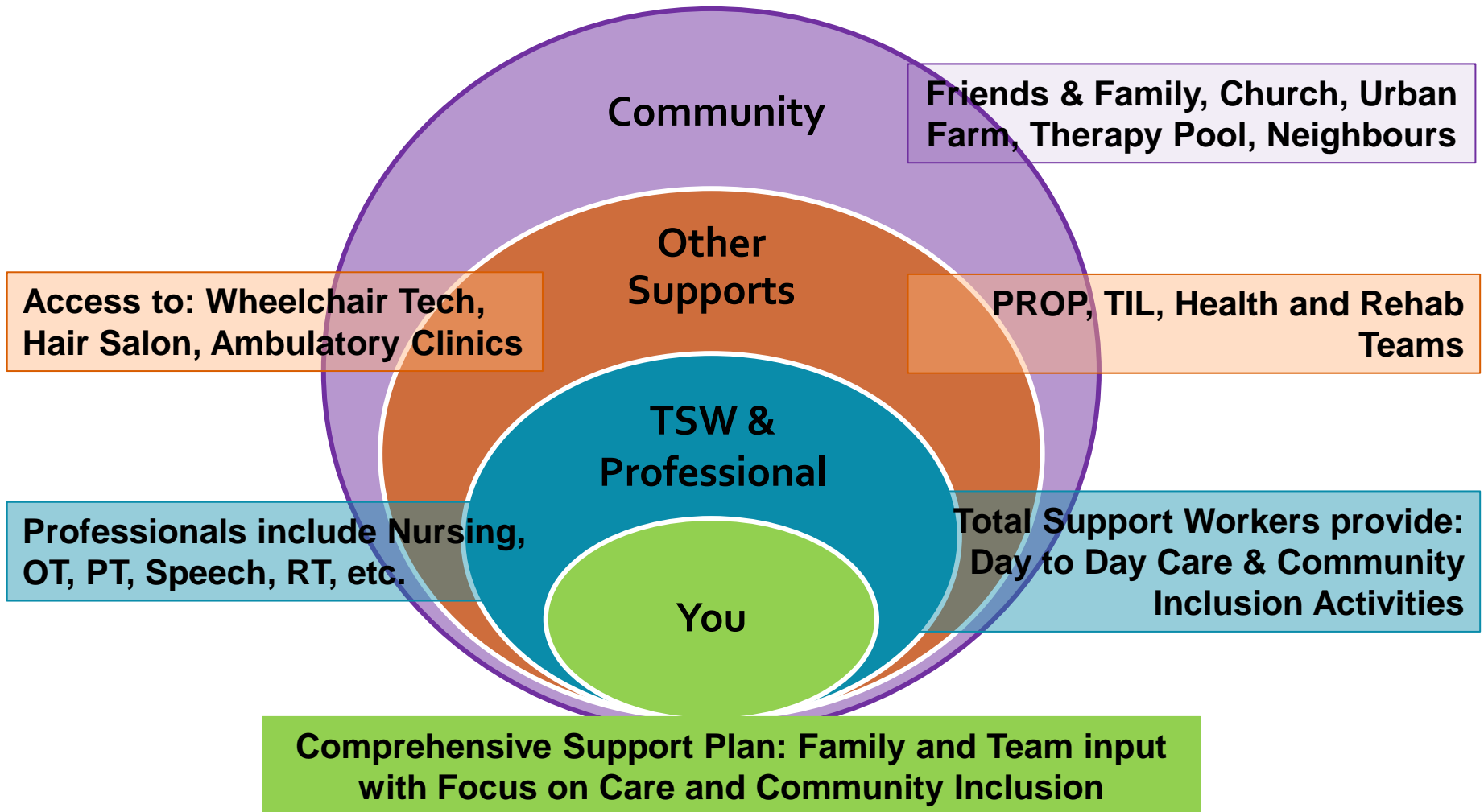
Presentations for Resident Units

Presentations for Residents Council

Presentations for (All Site) Resident/Family



Model of Care/Support Framework





Model of Care/Support Development

LESSONS FROM

Resident opinions and preferences

Guiding Principles

Support & Care Needs for Complexity / frailty

Literature review / Best Practice

Consensus Document

Other organizations / models

FACTORS FOR SUCCESS

Underpinning philosophy of care

Choice in housing

Choice in support model

Individualized planning

Community inclusion

Familiar, consistent carers

Professional consultation

Unit Specifications

ORIGINAL PLAN

Included 12 unit 'Greenhouses'

CURRENT PLAN

Single apartments, 4 unit and 6 unit homes

TIMELINES

50 Units - Completed 2021

64 Units – Completed by 2027; distributed through the remaining development phases



Floor Plans for First 50 Units



1

1

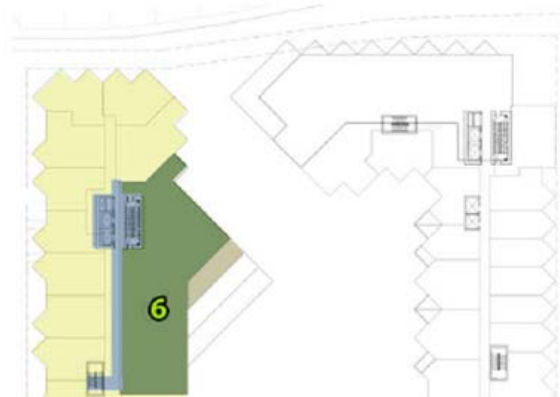
1

1

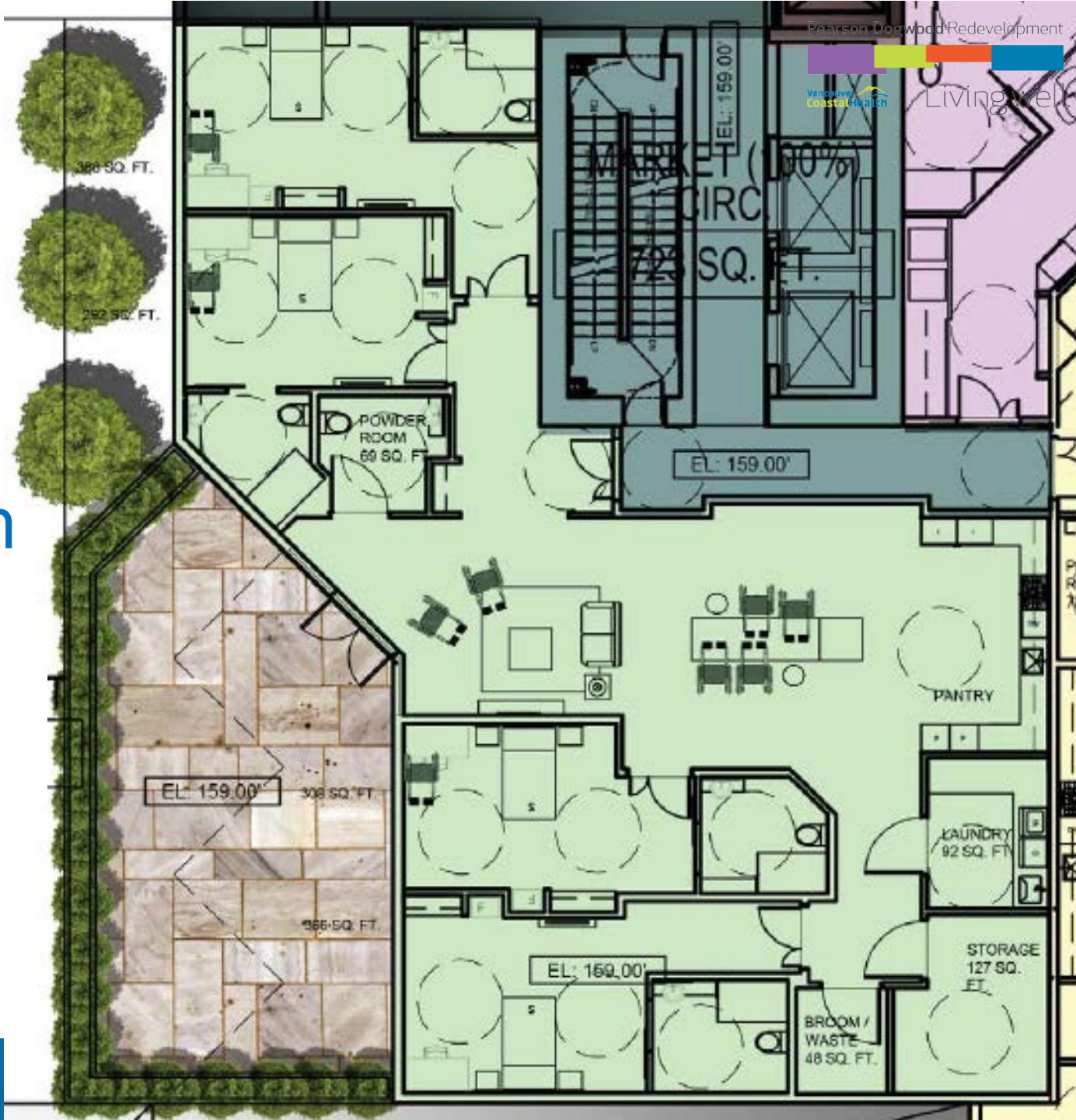
1

1

Individual Apartments



4 Bedroom Unit



Dogwood Lodge & Adult Day Care

CONSULTATION & ENGAGEMENT

Monthly with Family Representatives, Seniors Advisory Committee for COV and VCH to develop 'Greenhouse' care models/designs

FACILITY DESIGN

6 floors supporting 150 older adults with complex care

11 Neighbourhoods/Homes (10 to 14 residents), single rooms, private bathrooms, outdoor access

Rehabilitation and Clinic Space for Community Clients (including GPC Residents)

ADULT DAY CARE

25 Community Clients/Day

Therapy Pool

CONSULTATION & ENGAGEMENT

With representatives of the Pools Users Group and VCH

DESIGN & LOGISTICS

New pool will open as the Stan Stronge Pool closes

Located on the Pearson Dogwood lands

Hours of operation and staffing will be maintained

Similar in size to the current pool



CHC & Primary Care Hub

Residents benefit with these services co-located

CHC

Consolidation of services currently scattered across South Vancouver including Home Care, Public Health, Mental Health and Substance Programs

Integrated Care Teams

Ambulatory Care Clinics

60,000 foot facility

PRIMARY CARE HUB

Primary care (Doctors, Nurse Practitioners), Specialists & Allied Health Providers integrated to serve local residents

Pearson Dogwood Redevelopment



Living well.

Thank you

