



# Cycling Spot Improvements Update

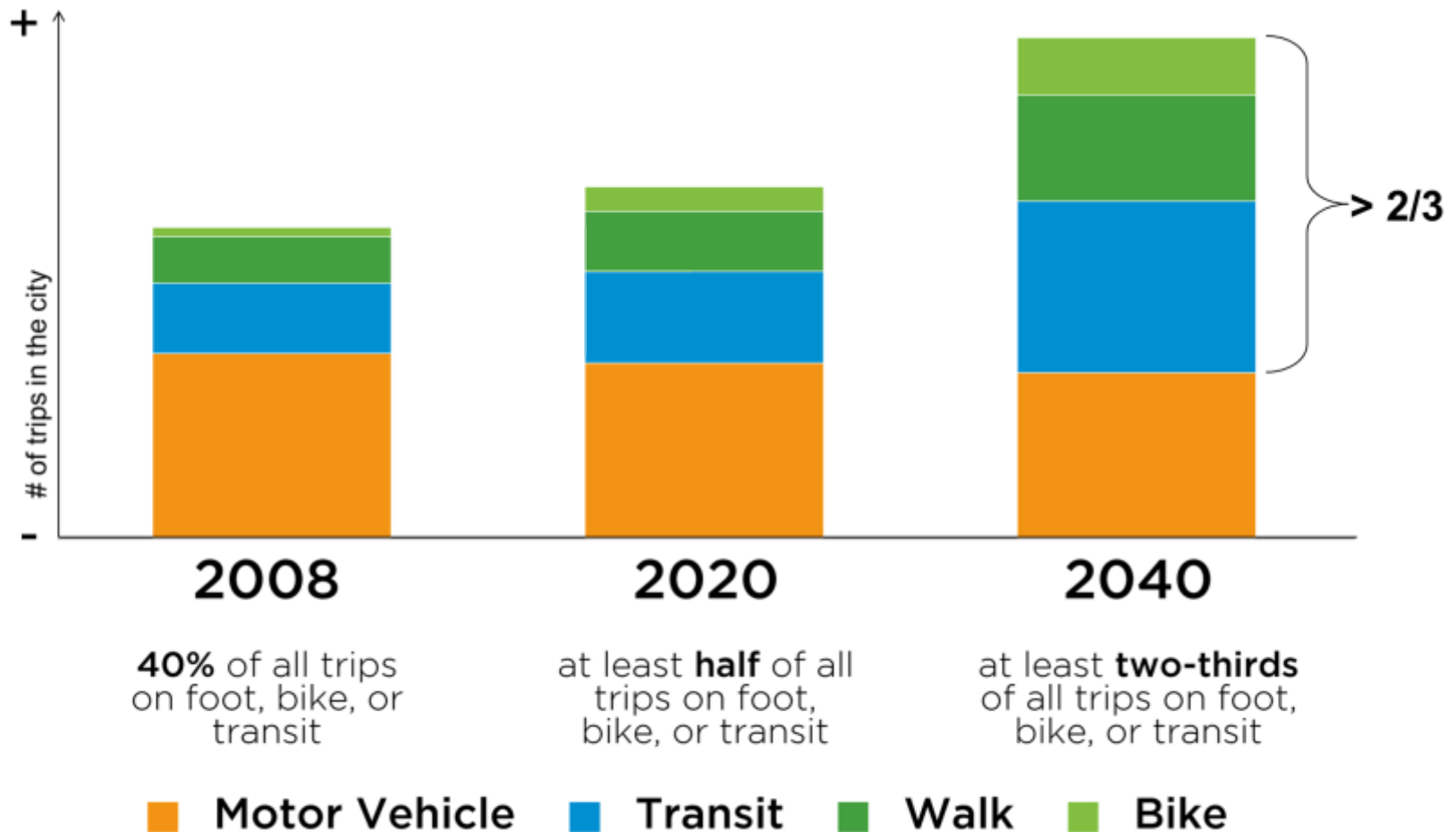
City Council  
May 2, 2017



# Agenda

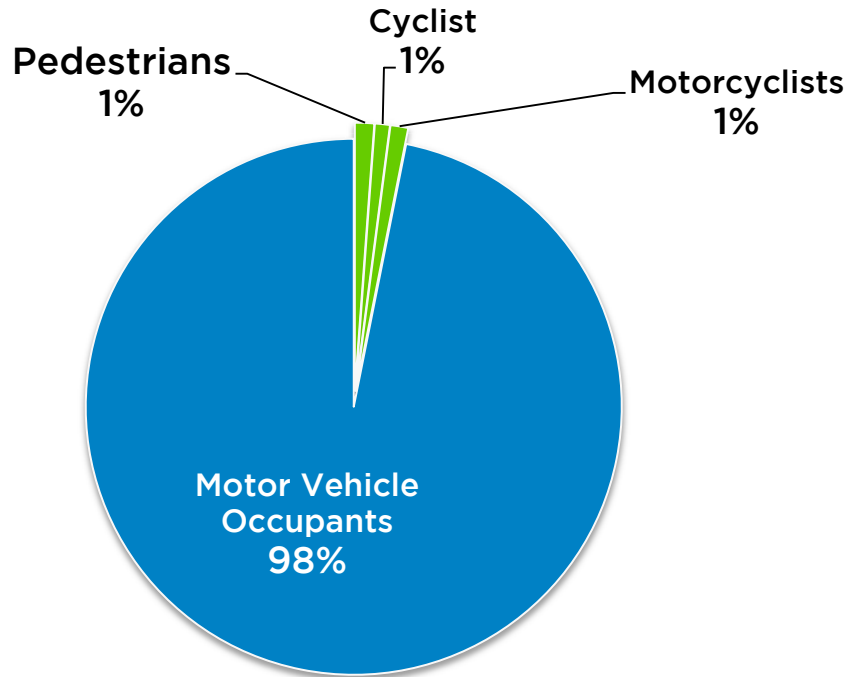
1. Background
2. Recent Spot Improvements
3. Union-Adanac Corridor
4. 10<sup>th</sup> Ave (Guelph-Quebec,  
Commercial-Victoria)
5. Conclusion

# Targets to Move More People



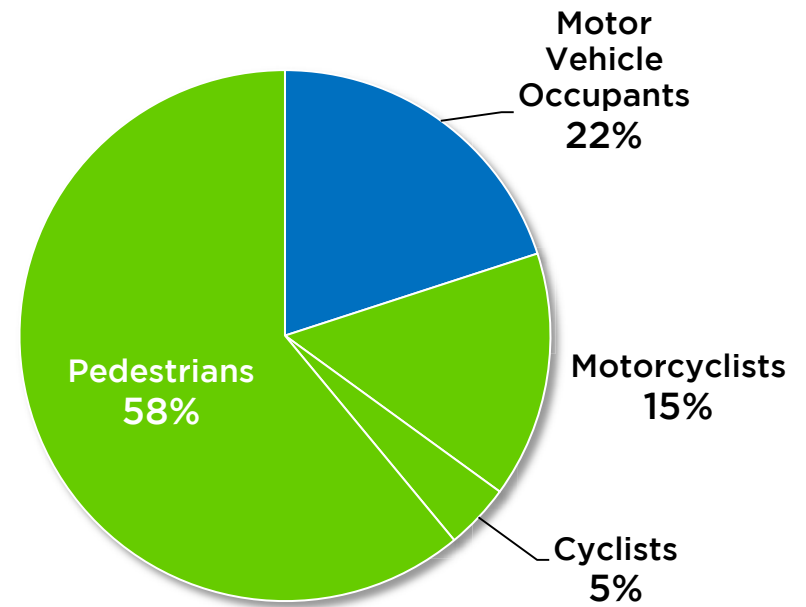
For all trips originating in the City of Vancouver.  
Source: 1994, 1999, 2004, and 2008 TransLink Trip Diary Surveys. 1994, 1999, and 2008 data was collected in the Fall, while 2004 data was collected in the Spring and adjusted for seasonal transit variation. 2008 data corrected for removal of 0-4 age group (non included in past survey results). Trips by commercial drivers (couriers, taxis, trucks, and bus drivers) not included.

# Zero Fatality Goal



**Collisions in Vancouver by road user**

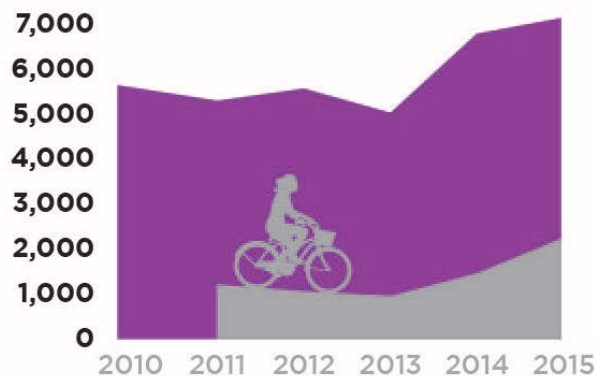
Source: ICBC Collision Data, 2009-2013



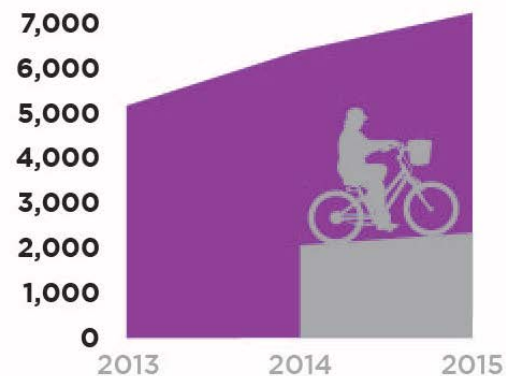
**Fatalities in Vancouver by road user**

Source: VPD Traffic Fatality Data, 2009-2013

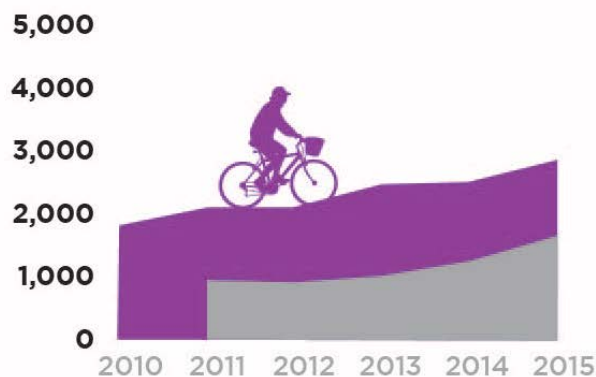
**Burrard Bridge**  
Daily mid-week bike trips\*



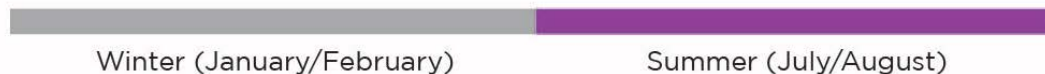
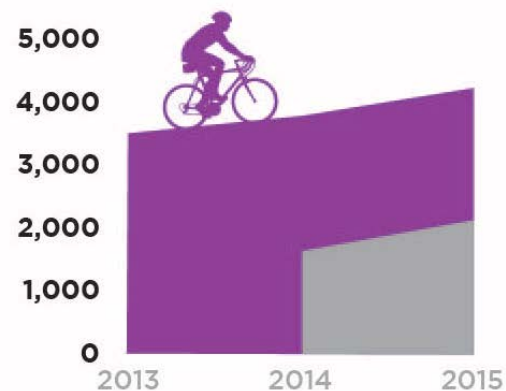
**Seawall at Science World**  
Daily mid-week bike trips\*



**Dunsmuir Viaduct**  
Daily mid-week bike trips\*



**Union Street at Hawks Avenue**  
Daily mid-week bike trips\*

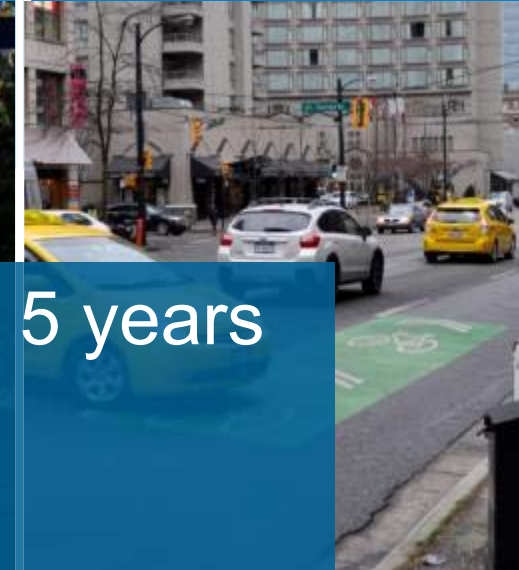
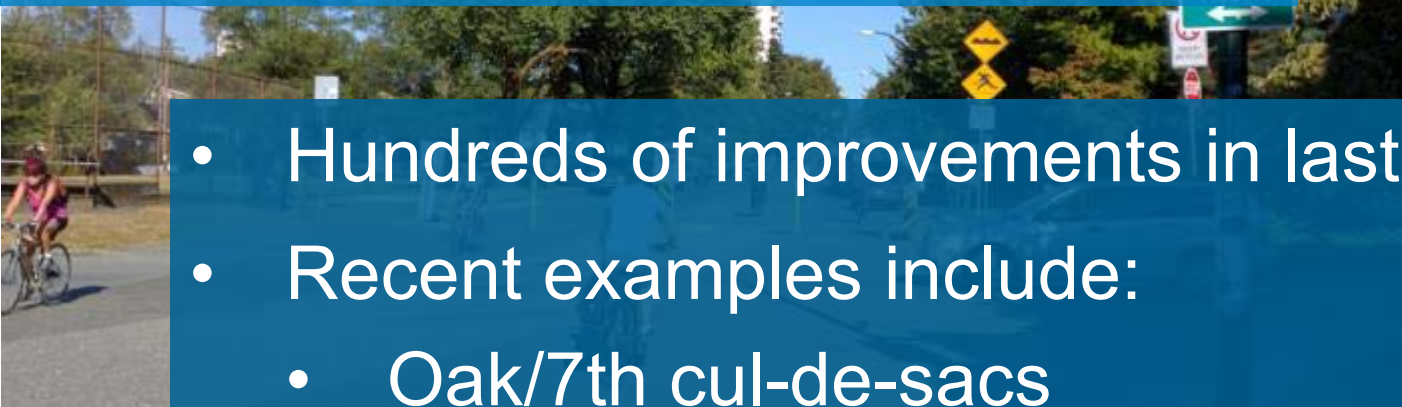


# Recent Spot Improvements



# Recent Spot Improvements

- Hundreds of improvements in last 5 years
- Recent examples include:
  - Oak/7th cul-de-sacs
  - Burrard protected bike lane (1<sup>st</sup> to 7<sup>th</sup>)
  - Burrard/10<sup>th</sup> & 7<sup>th</sup> diverters
  - Heather/16<sup>th</sup> crossing improvements
  - Adanac/Renfrew signal/median
  - Yukon/10<sup>th</sup> 4-way stop
  - Heather/7<sup>th</sup> stop reconfiguration



# 5-Year Cycling Network Additions & Upgrades 2016-2020

- Planned New Route
- Planned Upgrade

## Major Spot Improvements

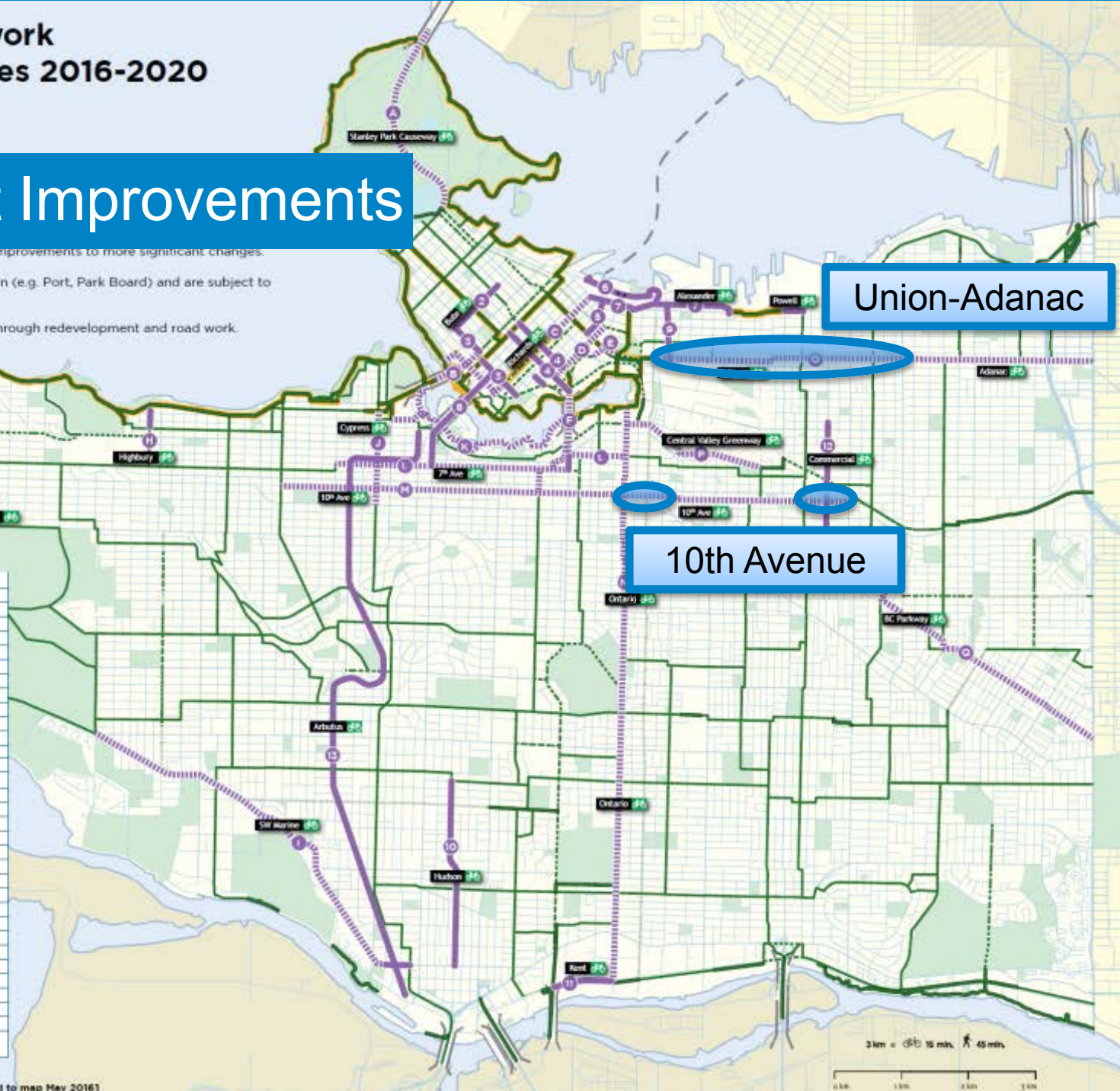
Upgrades can range from a series of small spot improvements to more significant changes.

Some projects fall on land outside City jurisdiction (e.g. Port, Park Board) and are subject to outside approval.

Not shown: minor additions and improvements through redevelopment and road work.

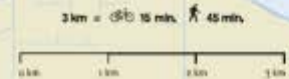
#	New Route
1	Park Lane*
2	Bute
3	Burnaby-Drake
4	Smithie-Nelson
5	Cambie Street
6	West Waterfront Road**
7	Water - Alexander - Powell (Portside Greenway)
8	Granville Bridge
9	Gore
10	Hudson
11	Kent
12	Commercial Drive
13	Arbutus
Upgrade	
A	Stanley Park Causeway*
B	Burrard-Pacific + connections
C	Richards
D	Beatty
E	Expo Boulevard
F	Cambie Bridge
G	Bianca
H	Highbury
J	SW Marine Drive
J	Cypress
K	South False Creek Seawall
L	7th Avenue - 5th Avenue (Off-Broadway)
M	10th Avenue
N	Ontario
O	Adanac
P	Great Northern Way - 1st Ave (Central Valley Greenway)
Q	BC Parkway

\* Park Board jurisdiction. \*\* Port Authority jurisdiction.  
Number sequencing does not imply priority.



Union-Adanac

10th Avenue





# 5-Year Cycling Network Additions & Upgrades 2016-2020

- Planned New Route
- Planned Upgrade

## Union-Adanac Corridor

Upgrades can range from a series of small spot improvements to more significant changes.

Some projects fall on land outside City jurisdiction (e.g. Port, Park Board) and are subject to outside approval.

Not shown: minor additions and improvements through redevelopment and road work.

Union-Adanac

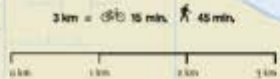


#	New Route
1	Park Lane*
2	Bute
3	Burnaby-Drake
4	Smithie-Nelson
5	Cambie Street
6	West Waterfront Road**
7	Wefer - Alexander - Powell (Portside Greenway)
8	Granville Bridge
9	Gore
10	Hudson
11	Kent
12	Commercial Drive
13	Arbutus

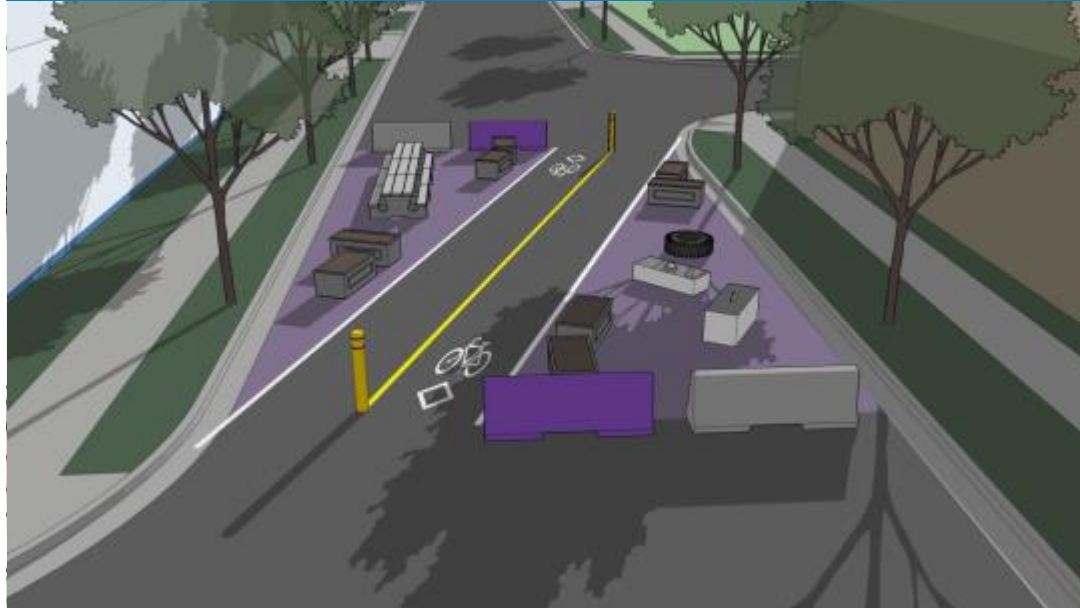
  

#	Upgrade
A	Stanley Park Causeway*
B	Burrard-Pacific + connections
C	Richards
D	Beatty
E	Expo Boulevard
F	Cambie Bridge
G	Bianca
H	Highbury
J	SW Marine Drive
J	Cypress
K	South False Creek Seawall
L	7th Avenue - 5th Avenue (Off-Broadway)
M	10th Avenue
N	Ontario
O	Adanac
P	Great Northern Way - 1st Ave (Central Valley Greenway)
Q	BC Parkway

\* Park Board jurisdiction. \*\* Port Authority jurisdiction.  
Number sequencing does not imply priority.



# Adanac/Vernon



# Adanac/Victoria

# Pedestrian Improvements



# 5-Year Cycling Network Additions & Upgrades 2016-2020

- Planned New Route
- Planned Upgrade

## 10<sup>th</sup> Avenue Corridor

Upgrades can range from a series of small spot improvements to more significant changes.

Some projects fall on land outside City jurisdiction (e.g. Port, Park Board) and are subject to outside approval.

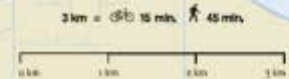
Not shown: minor additions and improvements through redevelopment and road work.

#	New Route
1	Park Lane*
2	Bute
3	Burnaby-Drake
4	Smithie-Nelson
5	Cambie Street
6	West Waterfront Road**
7	Water - Alexander - Powell (Portside Greenway)
8	Granville Bridge
9	Gore
10	Hudson
11	Kent
12	Commercial Drive
13	Arbutus
	Upgrade
A	Stanley Park Causeway*
B	Burrard-Pacific + connections
C	Richards
D	Beatty
E	Expo Boulevard
F	Cambie Bridge
G	Bianca
H	Highbury
J	SW Marine Drive
J	Cypress
K	South False Creek Seawall
L	7th Avenue - 5th Avenue (Off-Broadway)
M	10th Avenue
N	Ontario
O	Adanac
P	Great Northern Way - 1st Ave (Central Valley Greenway)
Q	BC Parkway

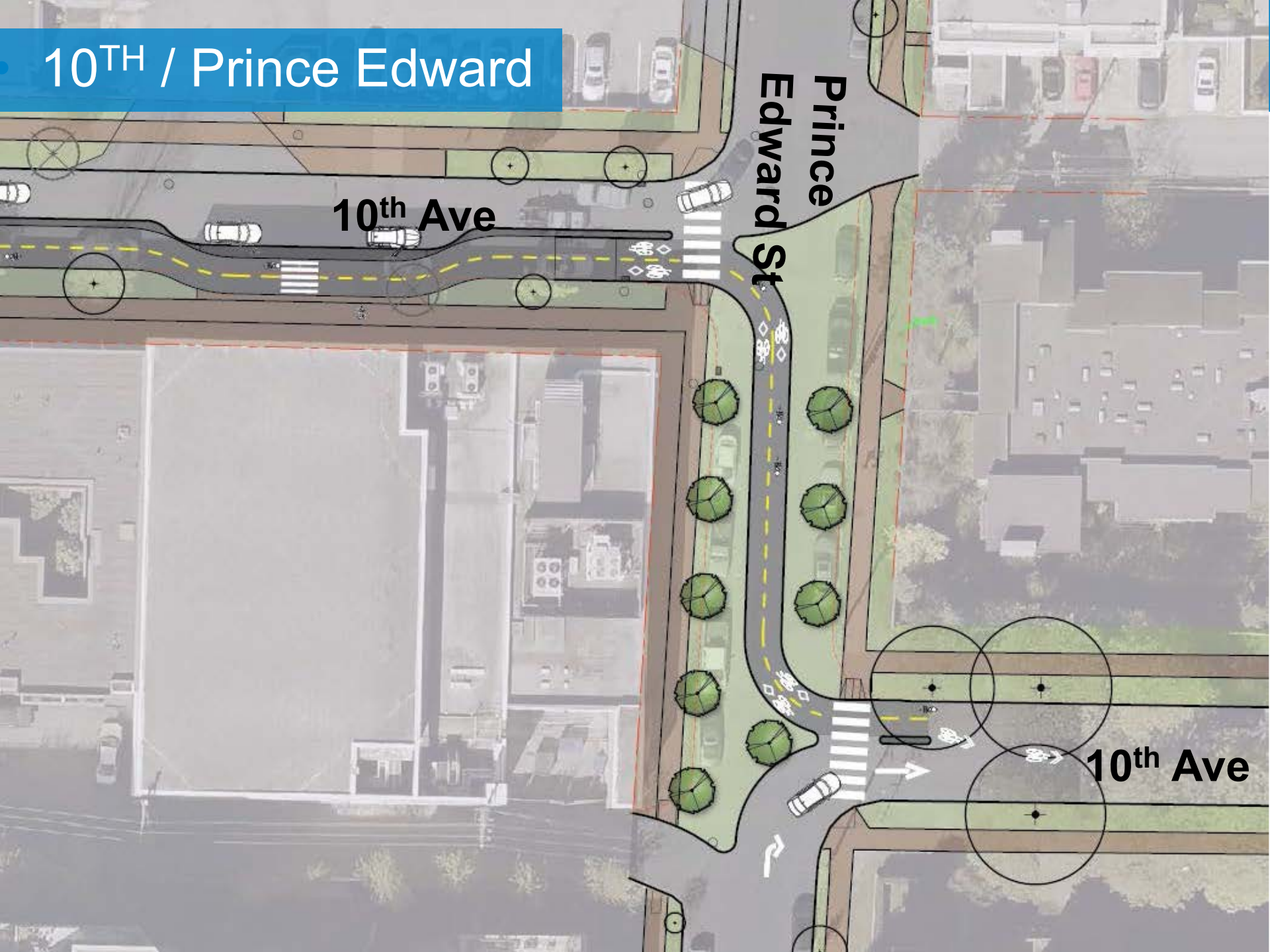
\* Park Board jurisdiction. \*\* Port Authority jurisdiction.  
Number sequencing does not imply priority.

10th Avenue  
Health Precinct

10th Avenue  
Spot Improvements



# 10<sup>TH</sup> / Prince Edward

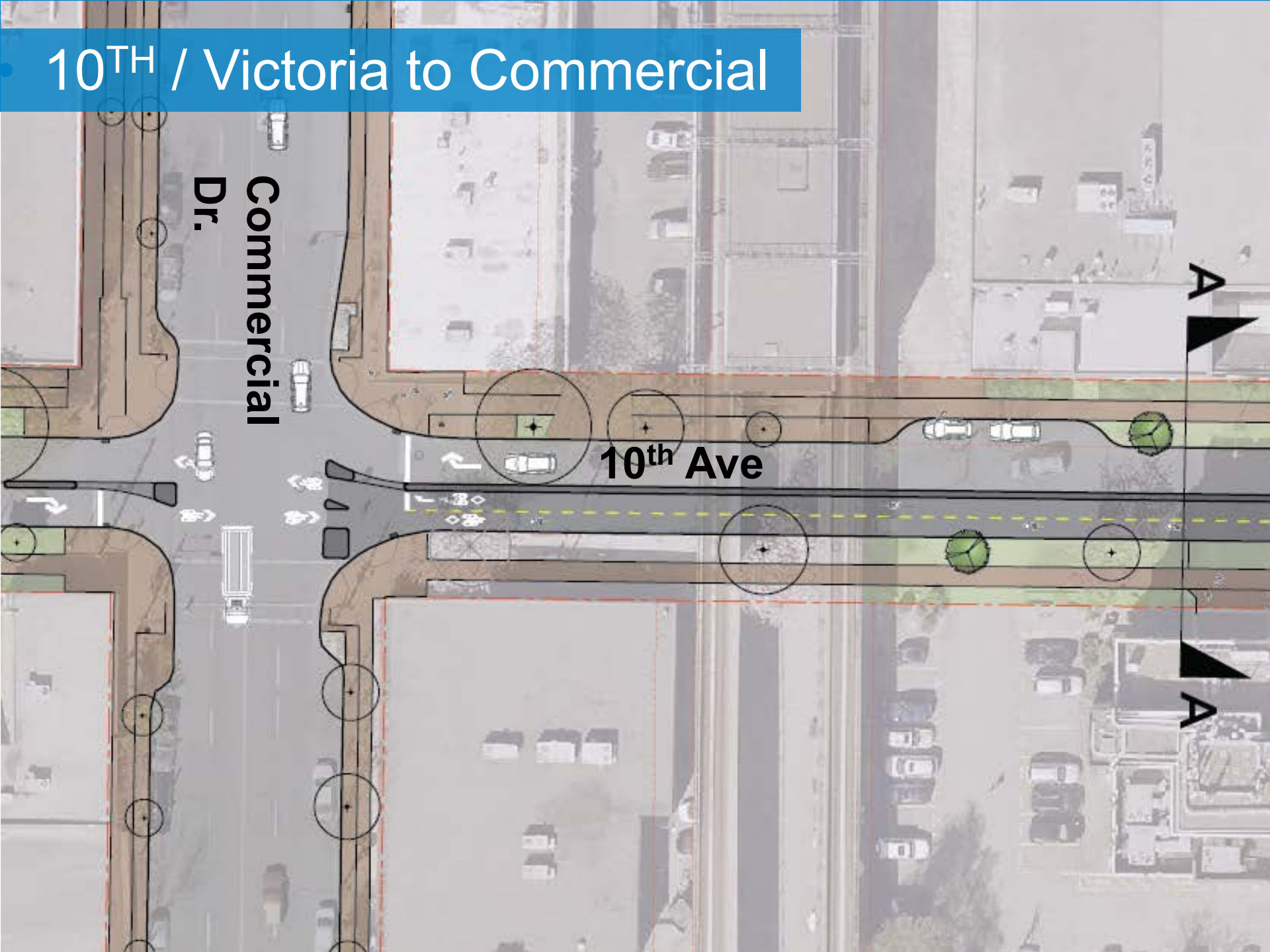


10<sup>th</sup> Ave

Prince Edward St

10<sup>th</sup> Ave

# 10<sup>TH</sup> / Victoria to Commercial



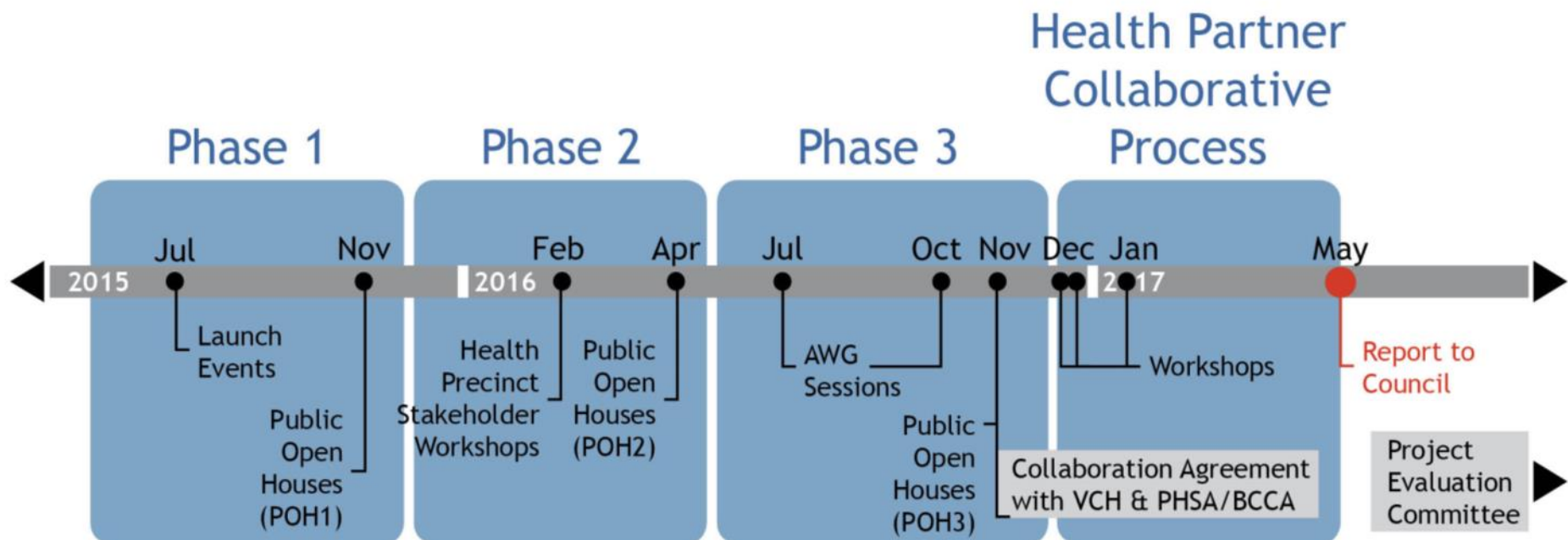
**Commercial  
Dr.**

**10<sup>th</sup> Ave**

**A**

**A**

# Health Precinct Process



# Conclusion

1. Continue to implement cycling spot improvements
2. Prioritize based on:
  - Safety and comfort
  - Biking volumes
  - Vehicle volumes
  - Public input
  - Coordination opportunities
  - Scale/cost relative to benefits