

1150 Comox Street Heritage Designation



The Gilmour House at 1150 Comox Street



Postcard circa 1912





Location of New Infill Building



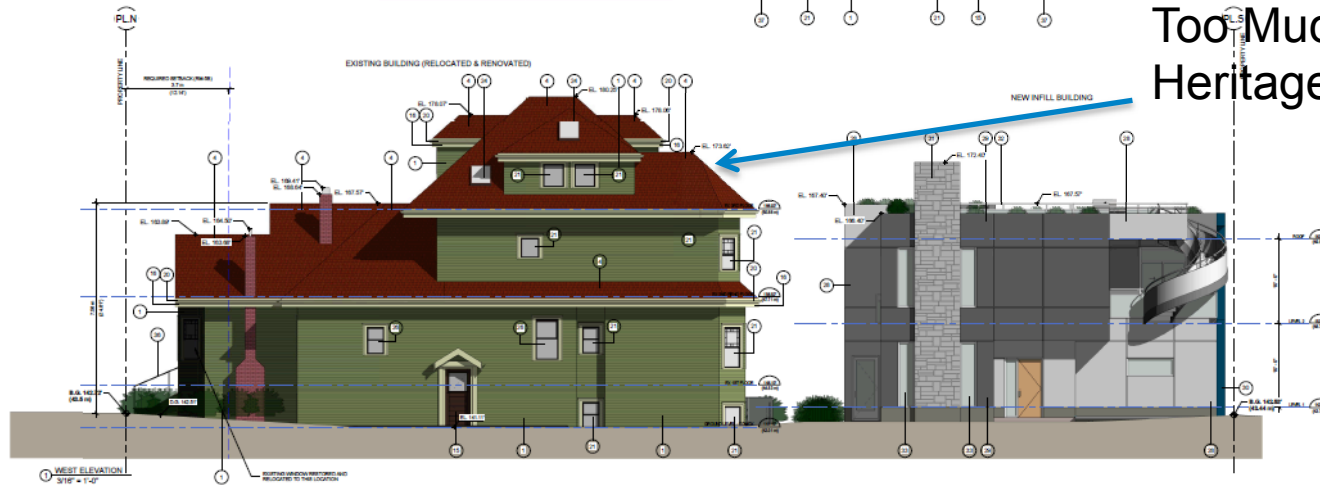
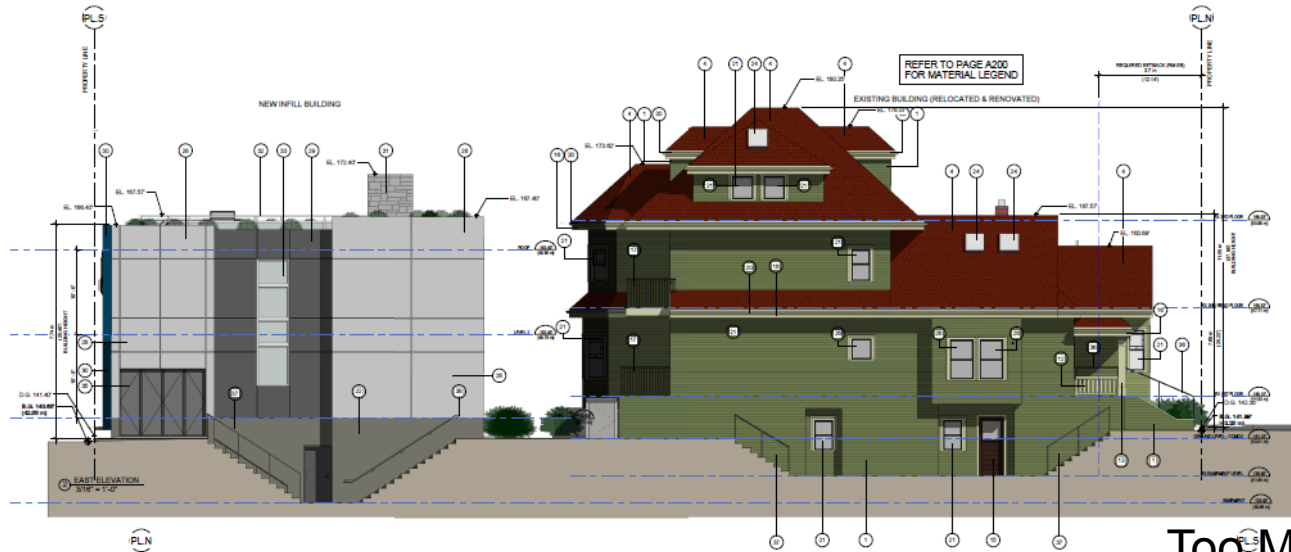
Existing



Proposed (Revised Scheme)



Previous Scheme (Not Supported)



Too Much Mass on Heritage Building



Current Revised Scheme
of New Infill Building

Previous Scheme
(Not Supported)
of New Infill Building



Summary and Conclusion

- The proposal retains and preserves a valued heritage resource in the community; and
- The proposal is generally in compliance with the applicable zoning and is consistent with the West End Plan and the Heritage Policies and Guidelines.

