

RESOLUTION

4. 3580 Graveley Street - Land Exchange for Road Purposes

WHEREAS

1. The City of Vancouver is the owner of all the streets and lanes lying within the limits of the City of Vancouver.
2. There is a proposal to redevelop PID: 011-185-015; Lot A, Except Part in Plan 22684, Block 113 Sections 28 and 29 Town of Hastings Suburban Lands Plan 17192, hereinafter, "Lot A".
3. The proposal requires the closure of an 869.5 square metre portion of the Highway #1 on-ramp, being adjacent to Lot A (the "Old Road Portion").
4. The Old Road Portion to be closed was dedicated by the deposit of Plan 22684 on February 26, 1990.
5. The proposal requires the conveyance to the City for road purposes of an 804.6 square metre portion of Lot A (the "New Road Portion").
6. The owner of Lot A has agreed to exchange the Old Road Portion for the New Road Portion.
7. The Old Road Portion to be closed is no longer required for municipal or highway purposes.
8. The Old Road Portion is to be conveyed to the owner of Lot A and consolidated with the abutting lands, being the remainder of Lot A and the New Road Portion is to be conveyed to the City and allocated for road purposes.

THEREFORE BE IT RESOLVED THAT all that portion of PID: 011-185-015; Lot A, Except Part in Plan 22684, Block 113 Sections 28 and 29 Town of Hastings Suburban Lands Plan 17192, as shown within heavy outline on Plan EPP64267, completed by James E. Gregson, B.C.L.S., on the 31st day of August, 2016, a copy of which is attached hereto, be conveyed to the City of Vancouver and allocated for road purposes and declared to form and constitute a portion of road; and

BE IT FURTHER RESOLVED THAT all that portion of road dedicated by the deposit of Plan 22684, adjacent to Lot A, Except Part in Plan 22684, Block 113 Sections 28 and 29 Town of Hastings Suburban Lands Plan 17192, the same as shown in heavy outline on the Reference Plan prepared by James E. Gregson, B.C.L.S., completed on the 31st day of August, 2016, and numbered Plan EPP64268, a copy of which is attached hereto, be closed, stopped-up and conveyed to the abutting owner; and

BE IT FURTHER RESOLVED THAT the said portion of road to be closed be consolidated with PID 011-185-015 Lot A, Except Parts in Plans 22684 and EPP64267, Block 113 Sections 28 and 29 Town of Hastings Suburban Lands Plan 17192 to form a single parcel, as shown within heavy outline on the Reference Plan prepared by James E. Gregson, B.C.L.S., completed on the 31st day of August, 2016, and numbered Plan EPP64269 to the satisfaction of the General Manager of Engineering Services and the Director of Legal Services.

* * * * *

REFERENCE PLAN TO ACCOMPANY RESOLUTION OF THE COUNCIL OF THE CITY OF VANCOUVER ESTABLISHING FOR HIGHWAY PURPOSES A PORTION OF LOT A, EXCEPT PART IN PLAN 22684, BLOCK 113, SECTIONS 28 AND 29 TOWN OF HASTINGS SUBURBAN LANDS, PLAN 17192

PLAN EPP64267

PURSUANT TO SECTION 291, VANCOUVER CHARTER

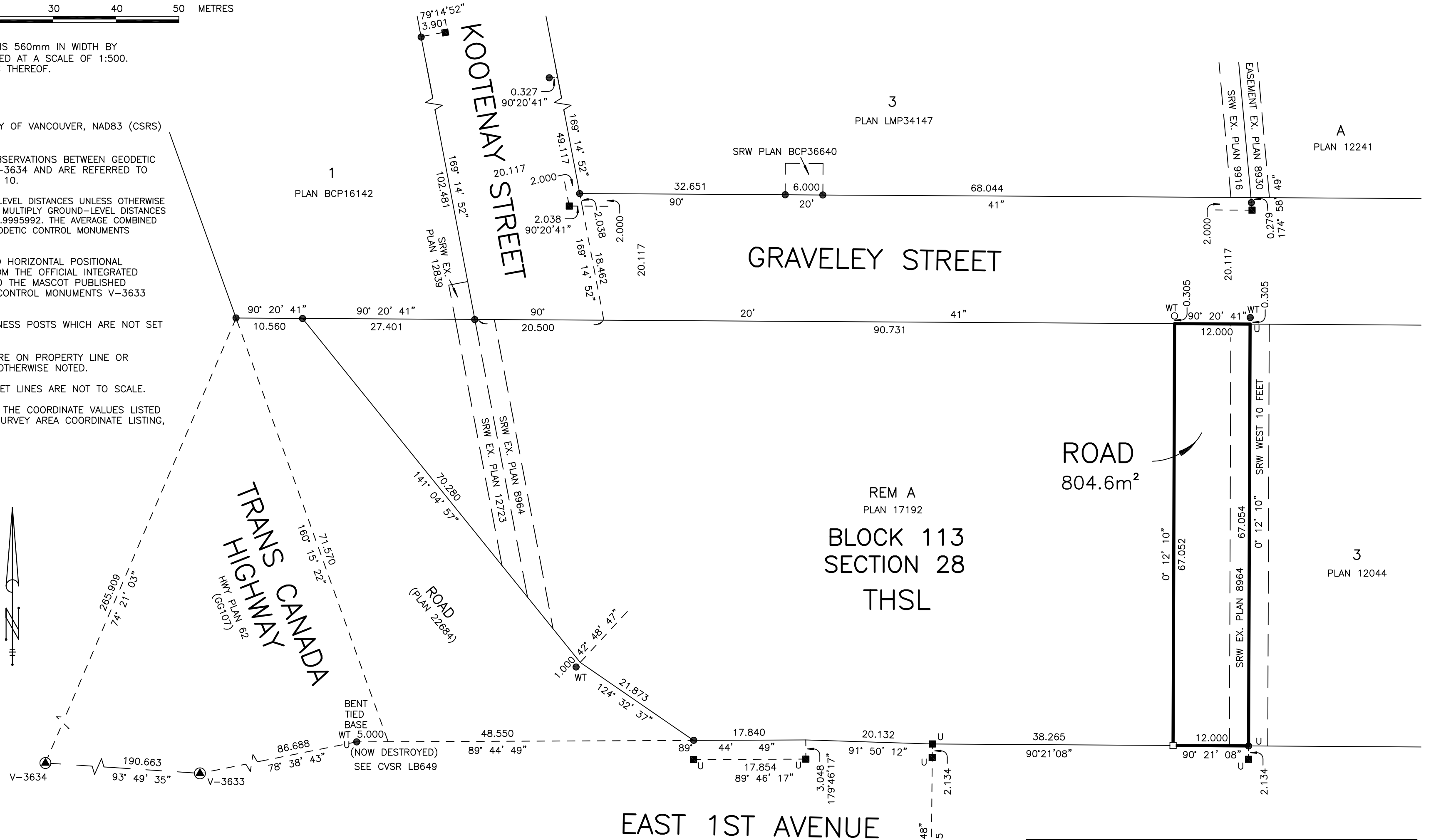
BCGS 92G.025



THE INTENDED PLOT SIZE OF THIS PLAN IS 560mm IN WIDTH BY 432mm IN HEIGHT (C SIZE) WHEN PLOTTED AT A SCALE OF 1:500. DISTANCES ARE IN METRES AND DECIMALS THEREOF.

NOTES

- INTEGRATED SURVEY AREA NO. 31, CITY OF VANCOUVER, NAD83 (CSRS) [4.0.0.BC.1.GVRD]
- GRID BEARINGS ARE DERIVED FROM OBSERVATIONS BETWEEN GEODETIC CONTROL MONUMENTS V-3633 AND V-3634 AND ARE REFERRED TO THE CENTRAL MERIDIAN OF UTM ZONE 10.
- THIS PLAN SHOWS HORIZONTAL GROUND-LEVEL DISTANCES UNLESS OTHERWISE SPECIFIED. TO COMPUTE GRID DISTANCES, MULTIPLY GROUND-LEVEL DISTANCES BY THE AVERAGE COMBINED FACTOR OF 0.9995992. THE AVERAGE COMBINED FACTOR HAS BEEN DETERMINED FROM GEODETIC CONTROL MONUMENTS V-3633 AND V-3634.
- THE UTM COORDINATES AND ESTIMATED HORIZONTAL POSITIONAL ACCURACY ACHIEVED ARE DERIVED FROM THE OFFICIAL INTEGRATED SURVEY AREA COORDINATE LISTING AND THE MASCOT PUBLISHED STANDARD DEVIATIONS FOR GEODETIC CONTROL MONUMENTS V-3633 AND V-3634.
- THIS PLAN SHOWS ONE OR MORE WITNESS POSTS WHICH ARE NOT SET ON THE TRUE CORNER(S).
- WITNESS POSTS AND OFFSET POSTS ARE ON PROPERTY LINE OR PROPERTY LINE PRODUCTION UNLESS OTHERWISE NOTED.
- FOR CLARITY PURPOSES CERTAIN OFFSET LINES ARE NOT TO SCALE.
- IF THERE IS A DISCREPANCY BETWEEN THE COORDINATE VALUES LISTED HERE AND THE OFFICIAL INTEGRATED SURVEY AREA COORDINATE LISTING, THE LATTER SHALL PREVAIL.



LEGEND

- ▲ INDICATES CONTROL MONUMENT FOUND
- INDICATES LEAD PLUG FOUND
- INDICATES STANDARD IRON POST FOUND
- INDICATES LEAD PLUG PLACED
- INDICATES STANDARD IRON POST PLACED
- U INDICATES UNREGISTERED SEE WONG & ASSOC. FILE:090263P
- CVSR INDICATES CITY OF VANCOUVER SURVEY RECORDS

UTM ZONE 10 NAD83(CSRS) 4.0.0.BC.1.GVRD COORDINATES				
GCM	NORTHING	EASTING	COMBINED SCALE FACTOR	HPA
V-3633	5,457,412.952	497,931.663	0.9995999	0.008
V-3634	5,457,425.671	497,741.498	0.9995984	0.008
"HPA" REFERS TO THE ESTIMATED HORIZONTAL POSITIONAL ACCURACY				

THE FIELD SURVEY REPRESENTED BY THIS PLAN WAS COMPLETED ON THE 31ST DAY OF AUGUST, 2016
JAMES E. GREGSON, BCLS #836

REFERENCE PLAN TO ACCOMPANY RESOLUTION OF THE COUNCIL OF THE CITY OF VANCOUVER STOPPING-UP PORTIONS OF ROAD DEDICATED BY THE DEPOSIT OF PLAN 22684, ADJACENT TO LOT A, EXCEPT PART IN PLAN 22684, AND EXCEPT PART IN PLAN EPP64267, BLOCK 113, SECTIONS 28 AND 29, TOWN OF HASTINGS SUBURBAN LANDS, PLAN 17192

PLAN EPP64268

PURSUANT TO SECTION 291, VANCOUVER CHARTER

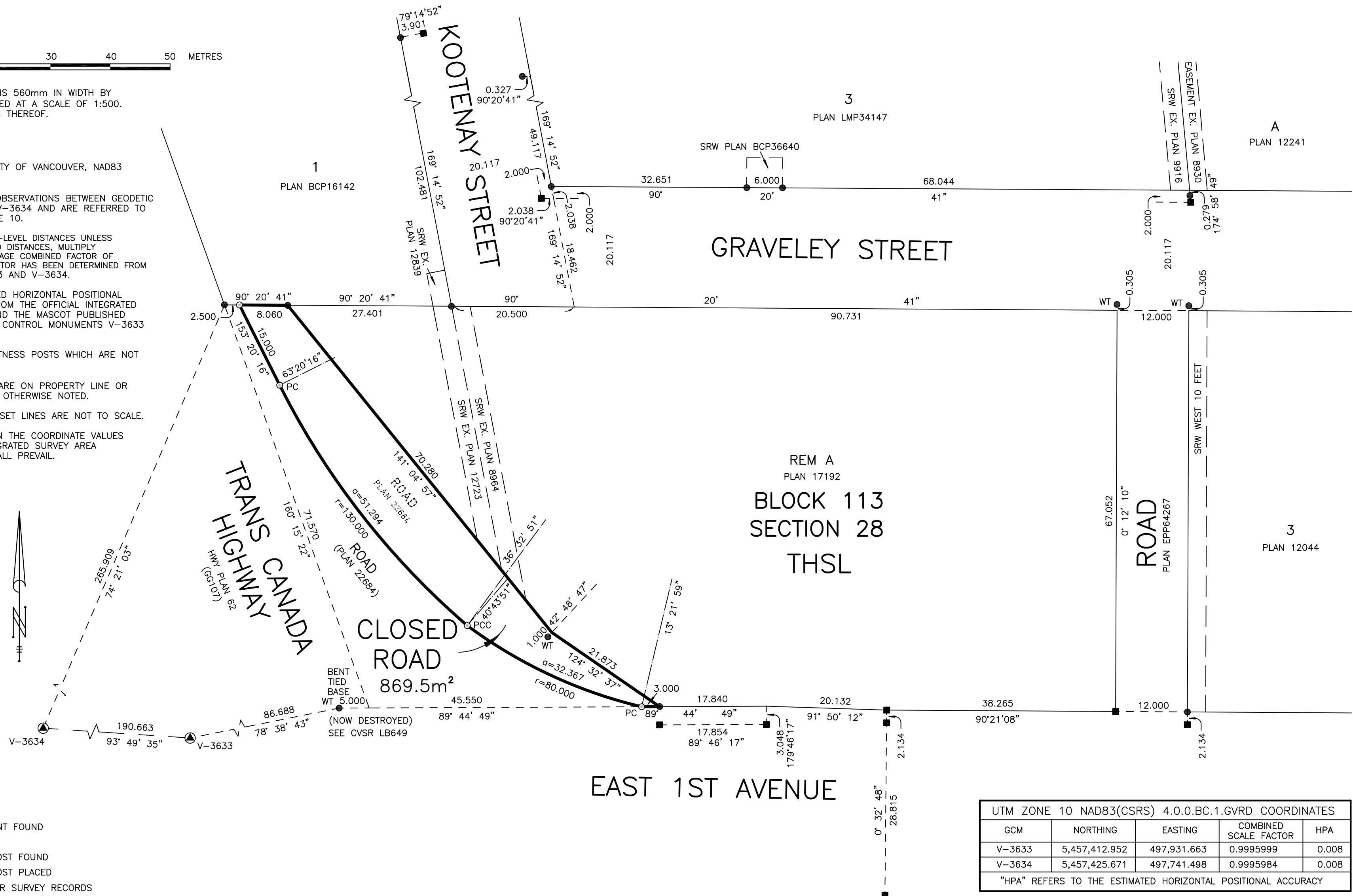
BCGS 92G.025



THE INTENDED PLOT SIZE OF THIS PLAN IS 560mm IN WIDTH BY 432mm IN HEIGHT (C SIZE) WHEN PLOTTED AT A SCALE OF 1:500. DISTANCES ARE IN METRES AND DECIMALS THEREOF.

NOTES

- INTEGRATED SURVEY AREA NO. 31, CITY OF VANCOUVER, NAD83 (CSRS) [4.0.0.BC.1.GVRD]
- GRID BEARINGS ARE DERIVED FROM OBSERVATIONS BETWEEN GEODETIC CONTROL MONUMENTS V-3633 AND V-3634 AND ARE REFERRED TO THE CENTRAL MERIDIAN OF UTM ZONE 10.
- THIS PLAN SHOWS HORIZONTAL GROUND-LEVEL DISTANCES UNLESS OTHERWISE SPECIFIED. TO COMPUTE GRID DISTANCES, MULTIPLY GROUND-LEVEL DISTANCES BY THE AVERAGE COMBINED FACTOR OF 0.9995992. THE AVERAGE COMBINED FACTOR HAS BEEN DETERMINED FROM GEODETIC CONTROL MONUMENTS V-3633 AND V-3634.
- THE UTM COORDINATES AND ESTIMATED HORIZONTAL POSITIONAL ACCURACY ACHIEVED ARE DERIVED FROM THE OFFICIAL INTEGRATED SURVEY AREA COORDINATE LISTING AND THE MASCOT PUBLISHED STANDARD DEVIATIONS FOR GEODETIC CONTROL MONUMENTS V-3633 AND V-3634.
- THIS PLAN SHOWS ONE OR MORE WITNESS POSTS WHICH ARE NOT SET ON THE TRUE CORNER(S).
- WITNESS POSTS AND OFFSET POSTS ARE ON PROPERTY LINE OR PROPERTY LINE PRODUCTION UNLESS OTHERWISE NOTED.
- FOR CLARITY PURPOSES CERTAIN OFFSET LINES ARE NOT TO SCALE.
- IF THERE IS A DISCREPANCY BETWEEN THE COORDINATE VALUES LISTED HERE AND THE OFFICIAL INTEGRATED SURVEY AREA COORDINATE LISTING, THE LATTER SHALL PREVAIL.



LEGEND

- INDICATES CONTROL MONUMENT FOUND
- INDICATES LEAD PLUG FOUND
- INDICATES STANDARD IRON POST FOUND
- INDICATES STANDARD IRON POST PLACED
- CVSR INDICATES CITY OF VANCOUVER SURVEY RECORDS

UTM ZONE 10 NAD83(CSRS) 4.0.0.BC.1.GVRD COORDINATES				
GCM	NORTHING	EASTING	COMBINED SCALE FACTOR	HPA
V-3633	5,457,412.952	497,931.663	0.9995999	0.008
V-3634	5,457,425.671	497,741.498	0.9995984	0.008

"HPA" REFERS TO THE ESTIMATED HORIZONTAL POSITIONAL ACCURACY

THE FIELD SURVEY REPRESENTED BY THIS PLAN WAS COMPLETED ON THE 31ST DAY OF AUGUST, 2016
JAMES E. GREGSON, BCLS #836

REFERENCE PLAN OF: LOT A, EXCEPT PART IN PLAN 22684, AND EXCEPT PART IN PLAN EPP64267, PLAN 17192; AND CLOSED ROAD, PLAN EPP64268; BOTH OF: BLOCK 113, SECTIONS 28 AND 29, TOWN OF HASTINGS SUBURBAN LANDS

PLAN EPP64269

PURSUANT TO SECTION 100(1)(b), LAND TITLE ACT

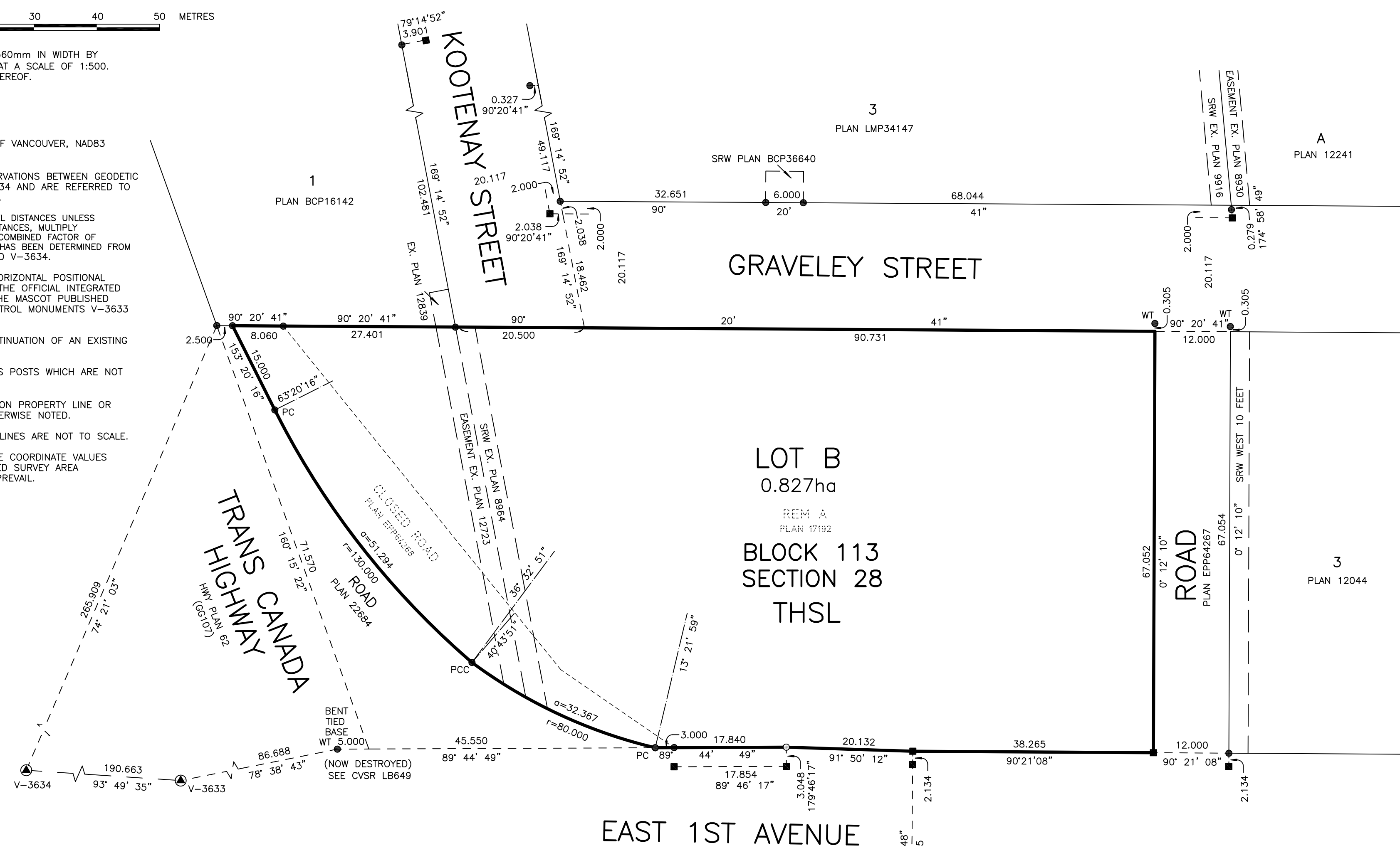
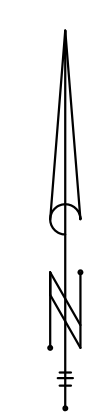
BCGS 92G.025



THE INTENDED PLOT SIZE OF THIS PLAN IS 560mm IN WIDTH BY 432mm IN HEIGHT (C SIZE) WHEN PLOTTED AT A SCALE OF 1:500. DISTANCES ARE IN METRES AND DECIMALS THEREOF.

NOTES

- INTEGRATED SURVEY AREA NO. 31, CITY OF VANCOUVER, NAD83 (CSRS) [4.0.0.BC.1.GVRD]
- GRID BEARINGS ARE DERIVED FROM OBSERVATIONS BETWEEN GEODETIC CONTROL MONUMENTS V-3633 AND V-3634 AND ARE REFERRED TO THE CENTRAL MERIDIAN OF UTM ZONE 10.
- THIS PLAN SHOWS HORIZONTAL GROUND-LEVEL DISTANCES UNLESS OTHERWISE SPECIFIED. TO COMPUTE GRID DISTANCES, MULTIPLY GROUND-LEVEL DISTANCES BY THE AVERAGE COMBINED FACTOR OF 0.9995992. THE AVERAGE COMBINED FACTOR HAS BEEN DETERMINED FROM GEODETIC CONTROL MONUMENTS V-3633 AND V-3634.
- THE UTM COORDINATES AND ESTIMATED HORIZONTAL POSITIONAL ACCURACY ACHIEVED ARE DERIVED FROM THE OFFICIAL INTEGRATED SURVEY AREA COORDINATE LISTING AND THE MASCOT PUBLISHED STANDARD DEVIATIONS FOR GEODETIC CONTROL MONUMENTS V-3633 AND V-3634.
- LOTS CREATED ON THIS PLAN ARE A CONTINUATION OF AN EXISTING NUMBERING SERIES.
- THIS PLAN SHOWS ONE OR MORE WITNESS POSTS WHICH ARE NOT SET ON THE TRUE CORNER(S).
- WITNESS POSTS AND OFFSET POSTS ARE ON PROPERTY LINE OR PROPERTY LINE PRODUCTION UNLESS OTHERWISE NOTED.
- FOR CLARITY PURPOSES CERTAIN OFFSET LINES ARE NOT TO SCALE.
- IF THERE IS A DISCREPANCY BETWEEN THE COORDINATE VALUES LISTED HERE AND THE OFFICIAL INTEGRATED SURVEY AREA COORDINATE LISTING, THE LATTER SHALL PREVAIL.



LEGEND

- ▲ INDICATES CONTROL MONUMENT FOUND
- INDICATES LEAD PLUG FOUND
- INDICATES STANDARD IRON POST FOUND
- INDICATES STANDARD IRON POST PLACED
- CVSR INDICATES CITY OF VANCOUVER SURVEY RECORDS

UTM ZONE 10 NAD83(CSRS) 4.0.0.BC.1.GVRD COORDINATES				
GCM	NORTHING	EASTING	COMBINED SCALE FACTOR	HPA
V-3633	5,457,412.952	497,931.663	0.9995999	0.008
V-3634	5,457,425.671	497,741.498	0.9995984	0.008

"HPA" REFERS TO THE ESTIMATED HORIZONTAL POSITIONAL ACCURACY

THE FIELD SURVEY REPRESENTED BY THIS PLAN WAS COMPLETED ON THE 31ST DAY OF AUGUST, 2016
JAMES E. GREGSON, BCLS #836