

FROM OUR HOSPITAL, TO OUR
COMMUNITIES, WE SEE THE PERSON
BEFORE THE ILLNESS.

CHANGE THE LABELS.

The St. Paul's Hospital
Mental Health HUB
Vancouver City Council,
June 15th, 2016



MENTAL HEALTH PROGRAM
PROVIDENCE HEALTH CARE



A woman with long dark hair, wearing a green long-sleeved shirt, is sitting on a dark couch and looking towards a man. The man is seen from the back, wearing a long-sleeved shirt with horizontal stripes in shades of pink and dark green. They are in a brightly lit room with a window in the background. The overall tone is professional and clinical.

10,500

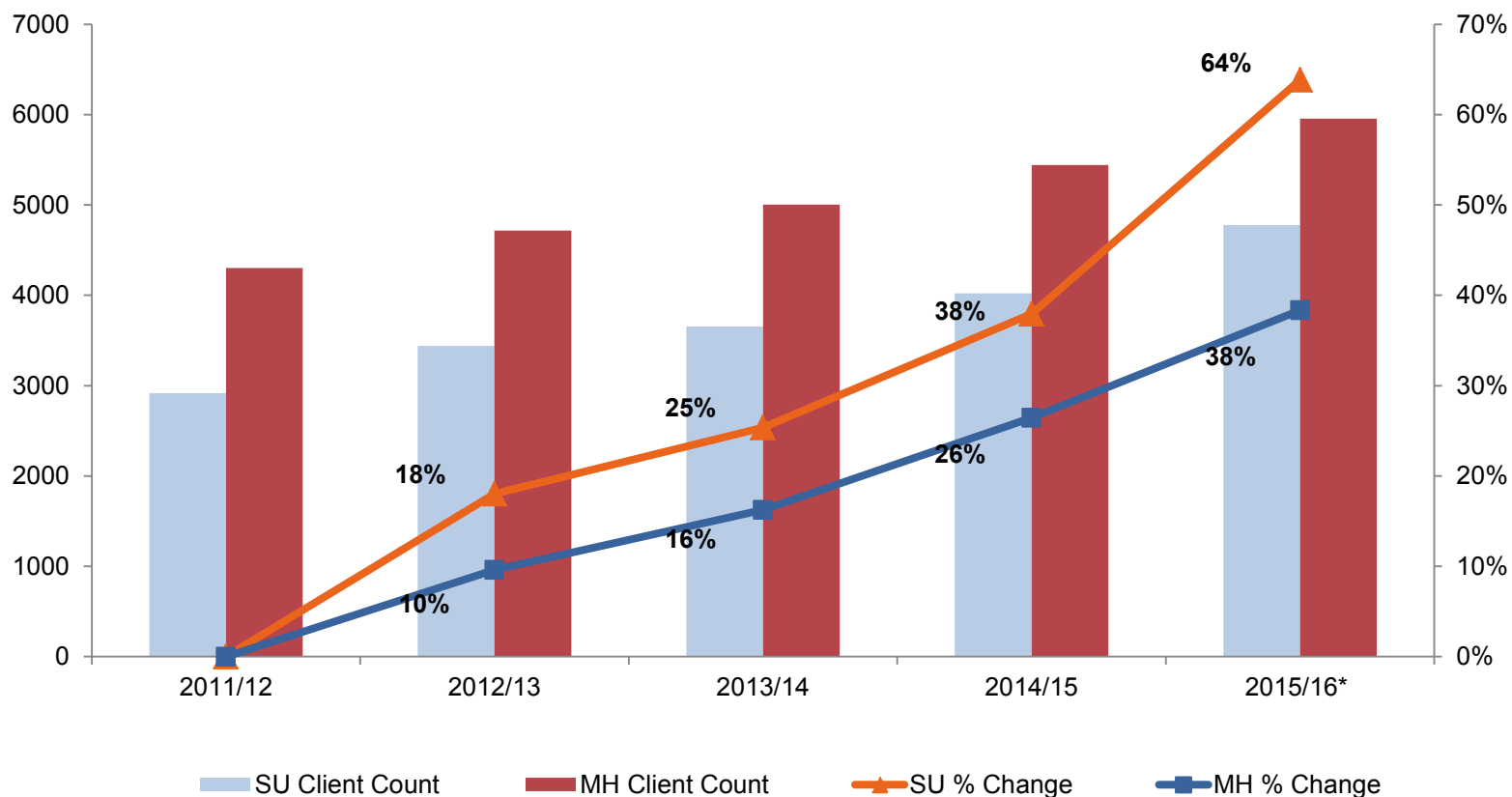
Patients visit SPH
emergency for Mental
health and addictions
each year

60

inpatient beds at SPH
– they operate at
110% capacity



Demand for Care Exceeds our Ability to Provide Excellent Service



Average Vancouver Police Wait Time 1:19:31



Navigating The Mental Health System



- Outreach teams
- Mental health teams
- Police apprehension
- Community health centres
- Contracted services



THE HUB AND THE SPOKE

BILL MacEWAN MD, FRCPC

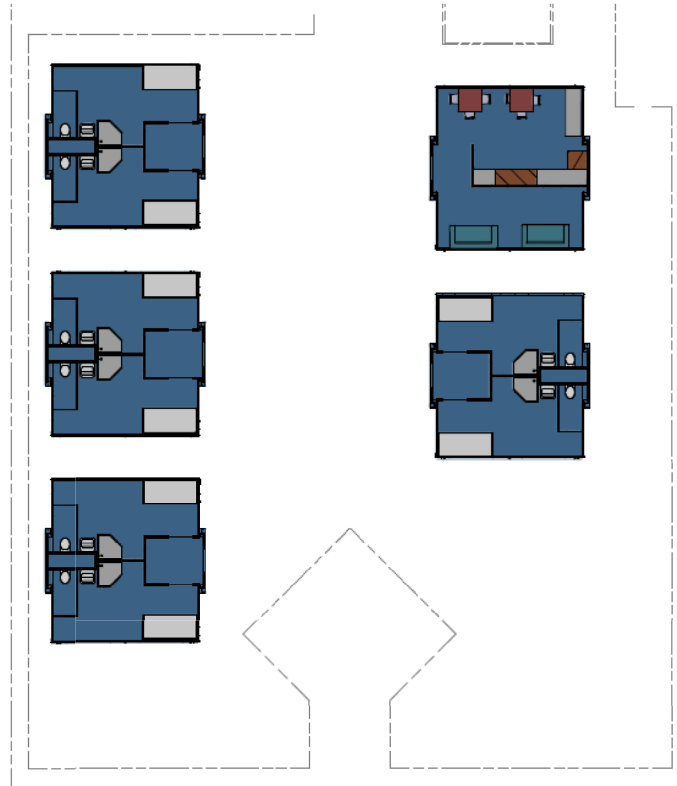
Head, Department of Psychiatry
St. Paul's Hospital, Providence Health Care



A Path to Better Care



The HUB



The Vancouver Police Foundation
Transitional Centre

- Housing
- Intensive Case Management
- VCH Integrated Health Centres

Our
Community



A Path to Better Care – Key Points

- Key partnerships with community health and housing services
- Decompression time post treatment
- In-reach and out-reach
- St. Mike's Hospital experienced a 70% reduction in readmission rates for mental health & substance use
- Gender safe design and care
- Trauma informed
- 24/7 peer-staffed
- Rapid access to addictions consultation
- Connection to required health and support services in the community



Improvements & Outcomes

- ↑ access to appropriate care for mental health and substance use
- ↓ Emergency department congestion (5,000)
- ↓ police wait times (20 min target)
- ↓ police involved recidivism (↓ 20%)
- ↑ supported transitions to community and connections to housing



Strategic alignment

Peer-involved services

Better system navigation

Enhanced coordination

VPD/VCH Project Link

Mayor's Task Force on Mental Health and Addictions

City of Vancouver Healthy City Strategy

VCH DTES Second Generation Strategy Health Services

DTES Local Area Plan



Resources

Vancouver Police Foundation	750,000
St Paul's Hospital Foundation	1,750,000
Request from City of Vancouver	1,000,000
Total Capital	3,500,000
Total Annual Operating (PHC and VCH)	3,000,000

