

CONVEYANCE OF LAND FOR MUNICIPAL PURPOSES
RESOLUTION OF THE CITY COUNCIL

A.3

MOVER: Councillor _____

SECONDER: Councillor _____

THAT WHEREAS the registered owner, the City of Vancouver, wishes to establish for highway purposes, lands in the City of Vancouver, Province of British Columbia, more particularly known and described as follows:

That portion of Lot 7, Block 49, District Lot 181, Group One, New Westminster District, Plan EPP32940, as shown heavy outlined on plan of survey completed March 31, 2015, attested to by Fred L. Wong, B.C.L.S. and numbered EPP32941, a print of which is attached hereto.

AND WHEREAS it is deemed expedient and in the public interest to accept and allocate the said lands for highway purposes.

BE IT RESOLVED that the above described lands are hereby allocated for highway purposes and declared to form and to constitute a portion of a highway.

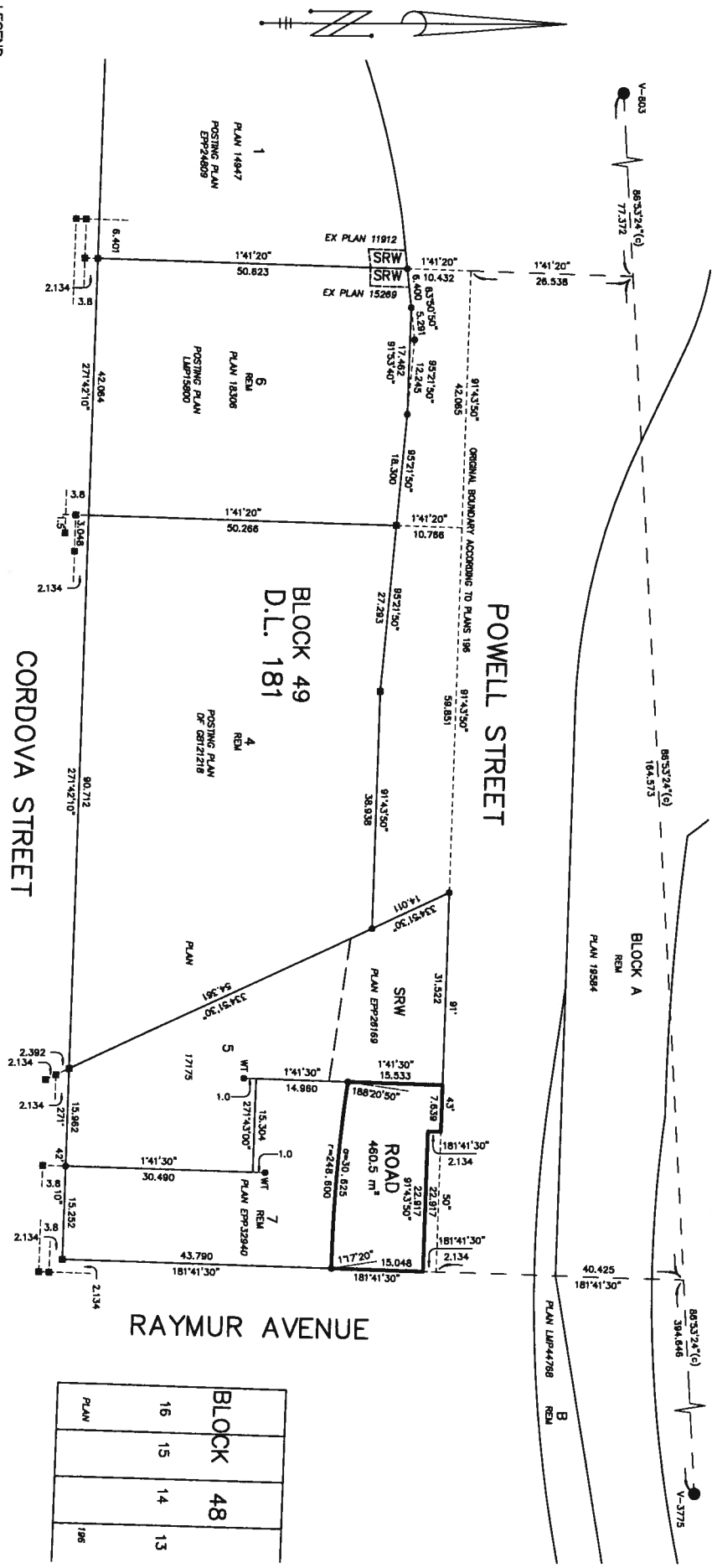
* * * * *

(Establishing Road on the south side of Powell Street, between the Cordova Diversion and Raymur Avenue, adjacent to 900 Block of Powell Street, for the Powell Street Overpass Project, as per February 17, 2015 Council authority)

REFERENCE PLAN TO ACCOMPANY RESOLUTION OF THE COUNCIL OF CITY OF VANCOUVER ESTABLISHING FOR HIGHWAY PURPOSES PORTION OF LOT 7, BLOCK 49, DISTRICT LOT 181, GROUP ONE, NEW WESTMINSTER DISTRICT, PLAN EPP32940, PURSUANT TO SECTION 291, VANCOUVER CHARTER.

BCSS 926.026

ALL DISTANCES ARE IN METERS AND DECIMALS THEREOF. THE INTENDED PLOT SIZE OF THIS PLAN IS 5600m N.W. WIDTH BY 4320m N.E. HEIGHT (G. SIZE) WHEN PLOTTED AT A SCALE OF 1:500.



LEGEND

- INDICATES CONTROL MONUMENT FOUND
- INDICATES LEAD PILE FOUND
- INDICATES STANDARD IRON POST FOUND

NOTE:
FOR CLARITY PURPOSES CERTAIN OFFSET LINES ARE NOT TO SCALE. OFFSET POSTS AND WITNESS POSTS ARE ON PROPERTY LINE OR PROPERTY LINE PRODUCTION UNLESS OTHERWISE NOTED. THIS PLAN SHOWS ONE OR MORE WITNESS POSTS WHICH ARE NOT SET ON THE TRUE CORNERS(S).

INTEGRATED SURVEY AREA NO. 31, CITY OF VANCOUVER, MAPS (CSRS) 4.0, DEC. 1, 1980.

GRID BEARINGS ARE DERIVED FROM OBSERVATIONS BETWEEN GEODETIC CONTROL MONUMENTS V-803 AND V-3775. THIS PLAN SHOWS HORIZONTAL GROUND-LEVEL DISTANCES UNLESS OTHERWISE SPECIFIED. TO SUPPORT THE GROUND-LEVEL DISTANCES FROM GEODETIC CONTROL MONUMENTS V-803 AND V-3775.

UTM COORDINATES

GCM	NORTHING	EASTING
V-803	5,458,903.188	493,780.405
V-3775	5,458,937.891	494,385.818

THE FIELD SURVEY REPRESENTED BY THIS PLAN WAS COMPLETED ON THE 31st DAY OF MARCH, 2013.
FRED L. WONG, 604.5 613

