

A.1

CONVEYANCE OF LAND FOR MUNICIPAL PURPOSES

RESOLUTION OF THE CITY COUNCIL

MOVER: Councillor _____

SECONDER: Councillor _____

THAT WHEREAS the registered owner will be conveying to the City of Vancouver for road purposes lands in the City of Vancouver, Province of British Columbia, more particularly known and described as follows:

All of Lot 42 District Lot 330 and 331 Group 1 New Westminster District Plan EPP31354 as shown on Subdivision Plan prepared by Gary Sundvick, B.C.L.S., completed on the 17th day of December, 2013, a copy of which is attached hereto.

AND WHEREAS it is deemed expedient and in the public interest to accept and allocate the said lands for road purposes.

BE IT RESOLVED that the above described lands to be conveyed are hereby accepted and allocated for road purposes and declared to form and to constitute a portion of road.

(East Fraser Lands Area 1 Subdivision - Wide Area Site Road Establishment - RTS10354 as per December 17, 2013 Council Authority)

* * * * *

**SUBDIVISION PLAN OF PARTS OF DISTRICT LOTS 330 AND 331
GROUP 1 NEW WESTMINSTER DISTRICT**

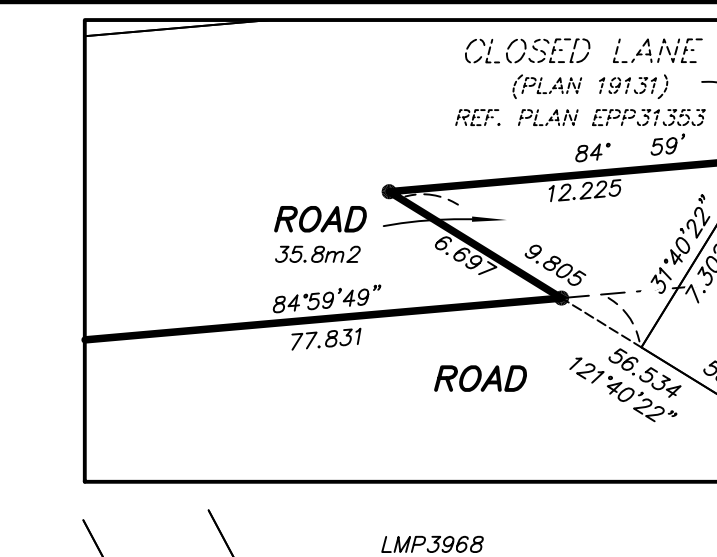
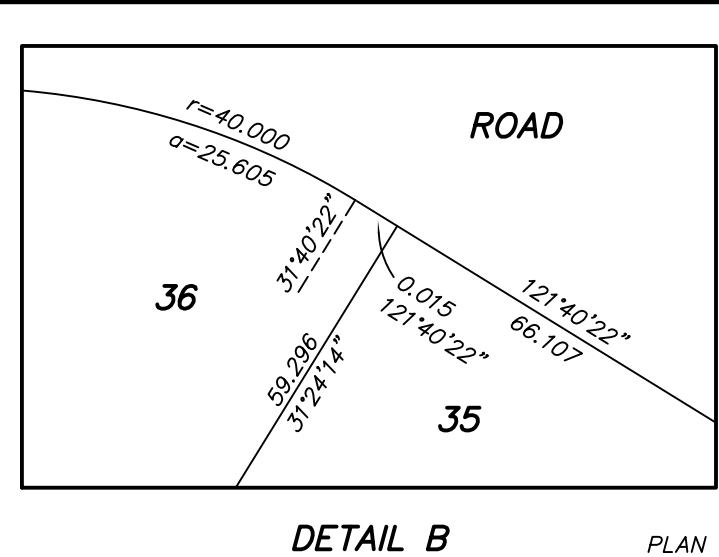
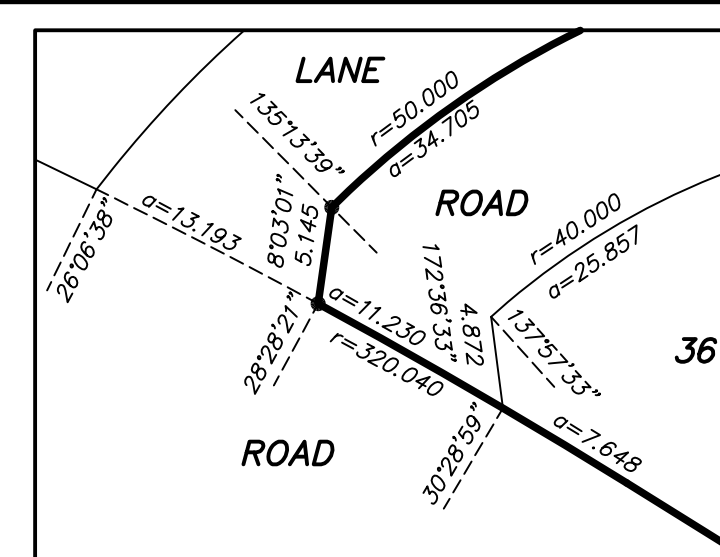
BCGS 926.025

SCALE 1 : 1000 DISTANCES ARE IN METRES

INTEGRATED SURVEY AREA NO. 31 (VANCOUVER)
NAD83(CSRS) (2005)
THIS PLAN SHOWS HORIZONTAL GROUND-LEVEL DISTANCES UNLESS OTHERWISE SPECIFIED TO COMPUTE GRID DISTANCES. MULTIPLE GROUND-LEVEL DISTANCES BY THE AVERAGE CORRECTION FACTOR OF 0.9996010 WHICH HAS BEEN DERIVED FROM CONTROL MONUMENTS V-2502 AND V-3769
THE INTENDED PLOT SCALE OF THIS PLAN IS 1:1000
IN WIDTH BY 864 mm IN HEIGHT (E SIZE) WHEN PLOTTED AT A SCALE OF 1:1000

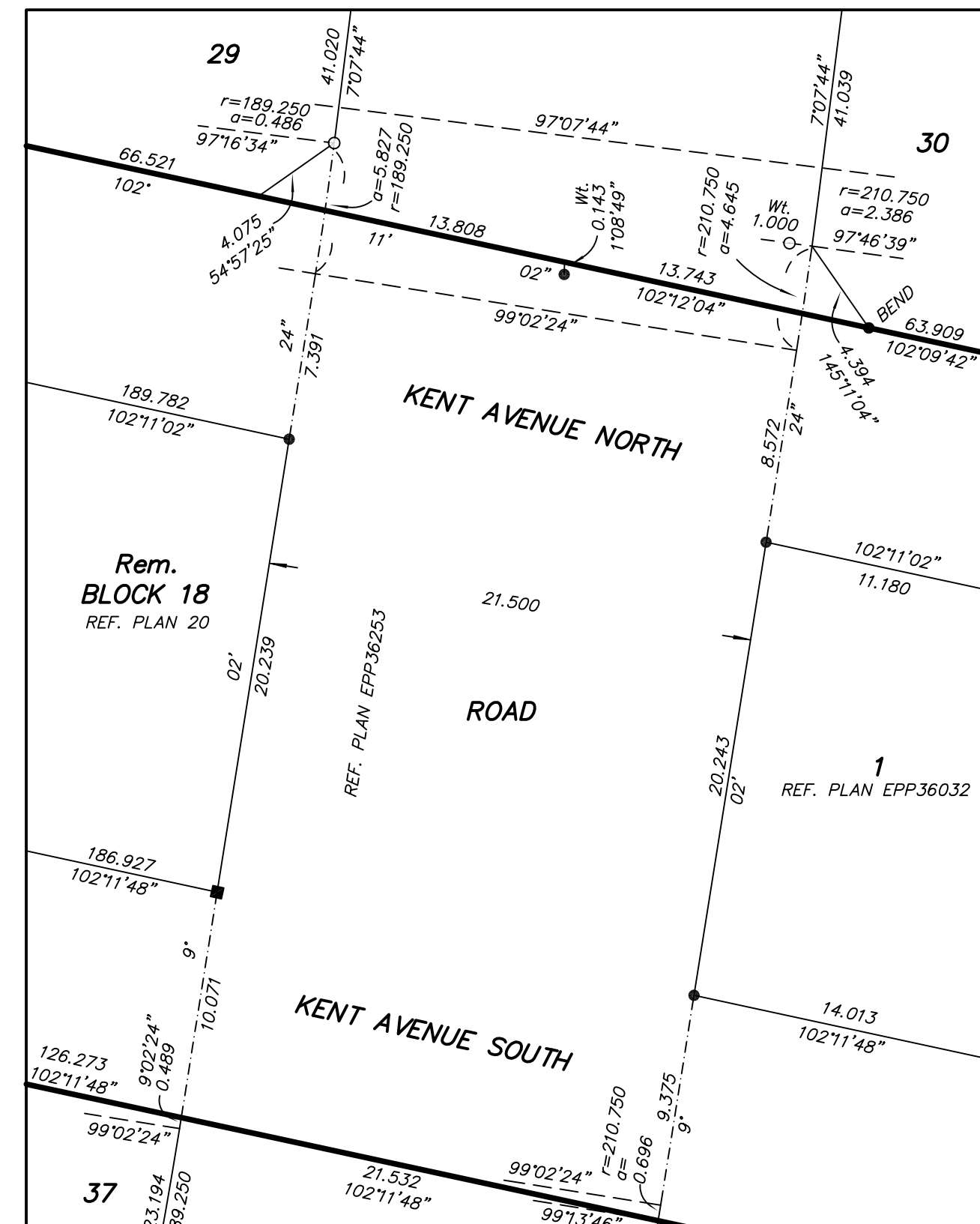


PLAN EPP31354

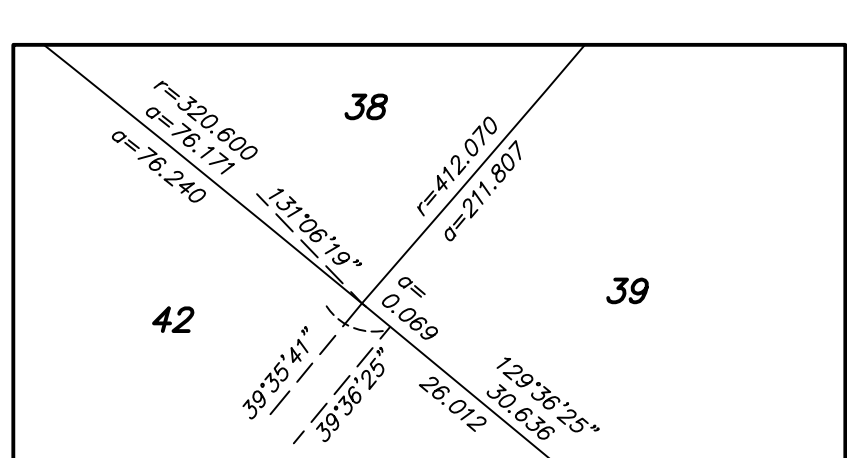


BOOK OF REFERENCE

CLOSED ROAD INCLUDED IN REFERENCE PLAN EPP31353 (DEDICATED BY THE DEPOSIT OF PLAN 19131)
LOT 135 BLOCKS 24 TO 29 DISTRICT LOT 331 PLAN 19131
LOT 124 BLOCKS 16 TO 19 DISTRICT LOT 331 PLAN 19091
LOT 125 BLOCKS 16 TO 19 DISTRICT LOT 331 PLAN 19091
LOT 126 BLOCKS 16 TO 19 DISTRICT LOT 331 PLAN 19091
LOT 127 BLOCKS 16 TO 19 DISTRICT LOT 331 PLAN 19091
LOT 128 BLOCKS 16 TO 19 DISTRICT LOTS 330 AND 331 PLAN 19091
CLOSED ROAD INCLUDED IN REFERENCE PLAN EPP31352 (DEDICATED BY THE DEPOSIT OF PLAN 19091)
CLOSED ROAD INCLUDED IN REFERENCE PLAN EPP31352 (DEDICATED BY THE DEPOSIT OF PLAN 17987)
CLOSED ROAD INCLUDED IN REFERENCE PLAN EPP31352 (DEDICATED BY THE DEPOSIT OF PLAN 4118)
CLOSED LANE INCLUDED IN REFERENCE PLAN EPP31352 (DEDICATED BY THE DEPOSIT OF PLAN 4118)
CLOSED ROAD INCLUDED IN REFERENCE PLAN EPP31352 (DEDICATED BY THE DEPOSIT OF PLAN 18928)
LOT 23 BLOCKS 24 TO 29 DISTRICT LOTS 330 AND 331 PLAN 4118
LOT 24 BLOCKS 24 TO 29 DISTRICT LOTS 330 AND 331 PLAN 4118
LOT 119 DISTRICT LOT 331 PLAN 18928
LOT 120 DISTRICT LOT 331 PLAN 18928
LOT 136 DISTRICT LOT 331 PLAN 19319
LOT 137 DISTRICT LOT 331 PLAN 19319
LOT 138 DISTRICT LOT 331 PLAN 19319
LOT 20 BLOCK 17 DISTRICT LOT 330 GROUP 1 NEW WESTMINSTER DISTRICT PLAN EPP23174
LOT 34 BLOCKS 9, 10 AND 16 TO 19 DISTRICT LOTS 330 AND 331 PLAN 2593
LOT 35 BLOCKS 9, 10 AND 16 TO 19 DISTRICT LOTS 330 AND 331 PLAN 2593
AMENDED LOT 36 (SEE 55949L) BLOCKS 9, 10 AND 16 TO 19 DISTRICT LOTS 330 AND 331 PLAN 2593
LOT A (REFERENCE PLAN 3234) BLOCKS 24 TO 29 DISTRICT LOTS 330 AND 331 PLAN 1477
THAT PART OF LOT 62 IN REFERENCE PLAN 2733, EXCEPT PART IN REFERENCE PLAN 3234, BLOCKS 24 TO 29 DISTRICT LOT 331 PLAN 1477, ESTABLISHED AS ROAD, SEE DF-31747
PARCEL 1 DISTRICT LOTS 330 AND 331 GROUP 1 NEW WESTMINSTER DISTRICT PLAN BCP3000
PARCEL 2 DISTRICT LOT 331 GROUP 1 NEW WESTMINSTER DISTRICT PLAN BCP3000



DETAIL E NOT TO SCALE



DETAIL F NOT TO SCALE

LEGEND:

GRID BEARINGS ARE DERIVED FROM OBSERVATIONS BETWEEN CONTROL MONUMENTS V-2502 AND V-3769

FOUND PLACED

- DENOTES CONTROL MONUMENT
- ⊙ DENOTES STANDARD ROCK POST
- ⊙ DENOTES STANDARD CONCRETE POST
- ⊙ DENOTES STANDARD DAPPED POST (TYPE 4)
- DENOTES LEAD PLUG
- DENOTES IRON POST
- DENOTES WITNESS
- m² DENOTES SQUARE METRES
- ha DENOTES HECTARES
- REF. DENOTES REFERENCE
- PCL DENOTES PARCEL

MODIFIED MONUMENTATION HAS BEEN APPROVED FOR THIS SURVEY

(NOTE: THIS PLAN SHOWS ONE OR MORE WITNESS POSTS WHICH ARE NOT SET ON THE TRUE CORNERS.)

THE FIELD SURVEY REPRESENTED BY THIS PLAN WAS COMPLETED BY GARY SUNDICK B.C.S. (637) ON THE 17th DAY OF DECEMBER, 2013 EOR/156868

THIS PLAN LIES WITHIN THE GREATER VANCOUVER REGIONAL DISTRICT

THIS PLAN LIES WITHIN THE JURISDICTION OF THE APPROVING OFFICER FOR CITY OF VANCOUVER

LOTS CREATED ON THIS PLAN ARE A CONTINUATION OF AN EXISTING NUMBERING SERIES.

BUTLER SUNDICK

4 - 19089 94th Ave
Burnaby, BC V4N 3J4
www.butlersundick.com
Tel: 604-513-9611
Fax: 3602-AREA 1
Dwg: 3052-AREA 1-PH1