



s. 22(1) Personal and Confidential



Peter Ostafichuk

1000 SEYMOUR STREET

PODIUM
(6 STOREY)

TOWER
(18 STOREY)
160.0'

TOWER
(8 STOREY)
170.0'

PODIUM
(5 STOREY)

PROPOSED
SOCIAL
HOUSING
(13 STOREY)
120.0'

13°

1000 RICHARDS STREET

TOWER
(18
STOREY)

(2/3 STOREY) HERITAGE
TOWN HOUSES

25°

LANE

Total: 73°

500 HELMCKEN STREET

35°

BROOKLAND COURT
(8 STOREY)
88.0'

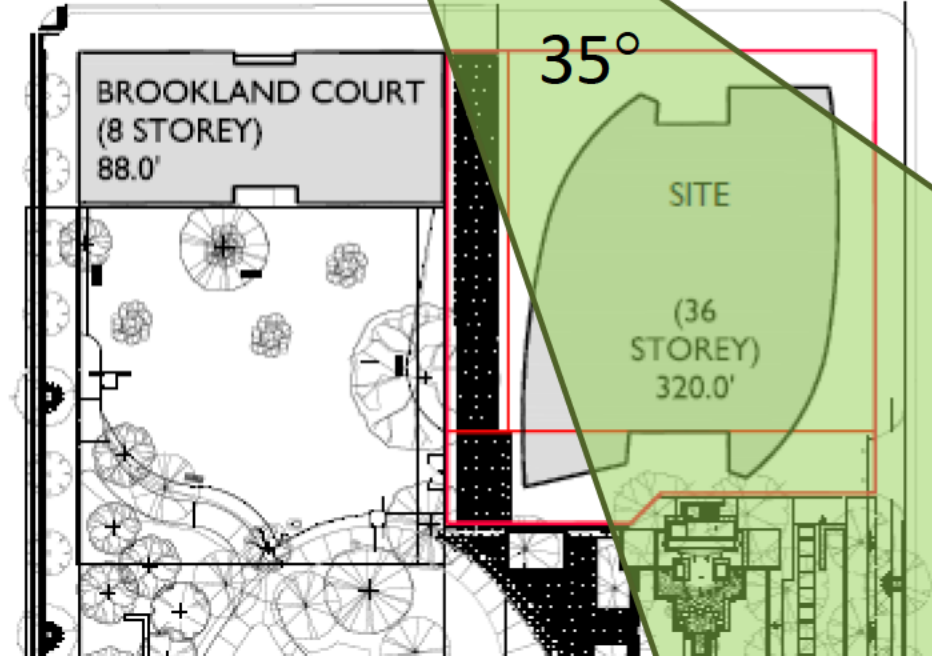
SITE
(36
STOREY)
320.0'

1100 RICHARDS STREET

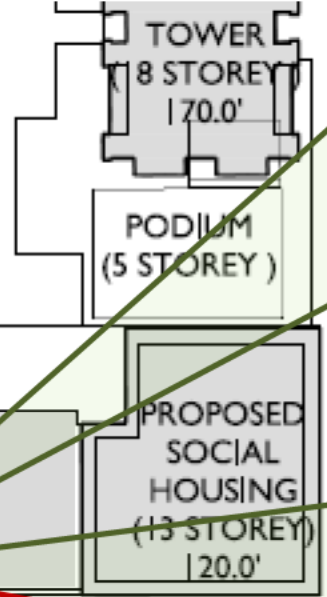
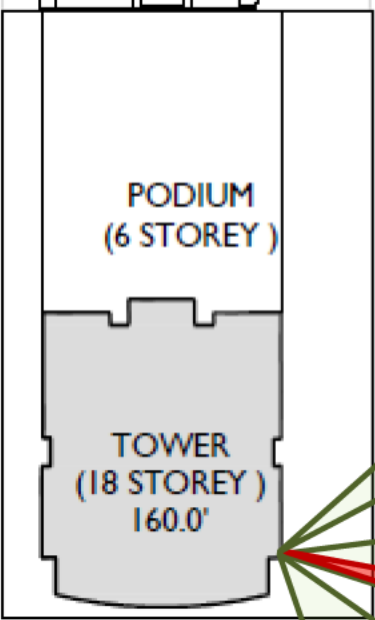
TOWER
(16 STOREY)

PODIUM
(5 STOREY)
50.0'

1100 SEYMOUR STREET



1000 SEYMOUR STREET



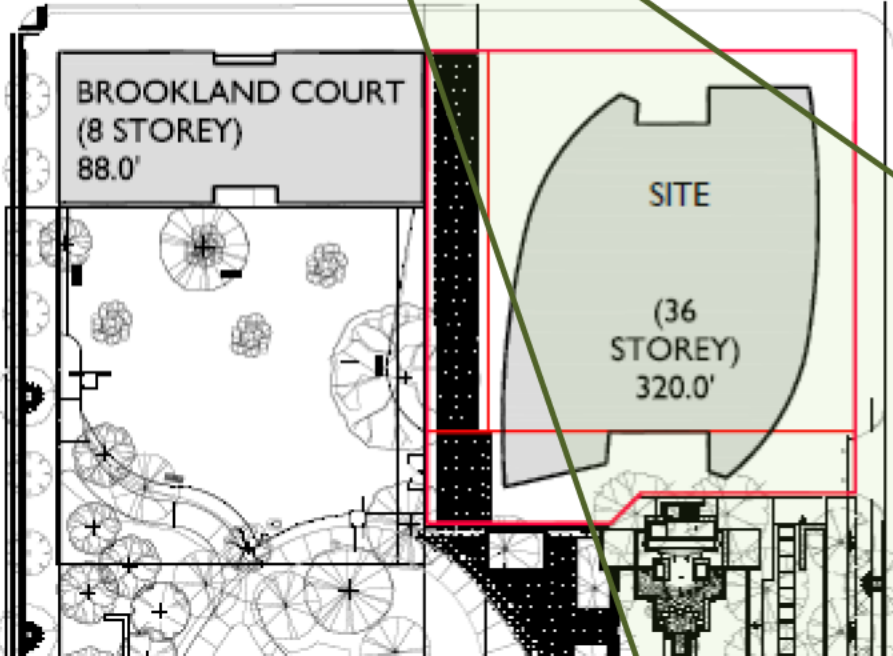
1000 RICHARDS STREET



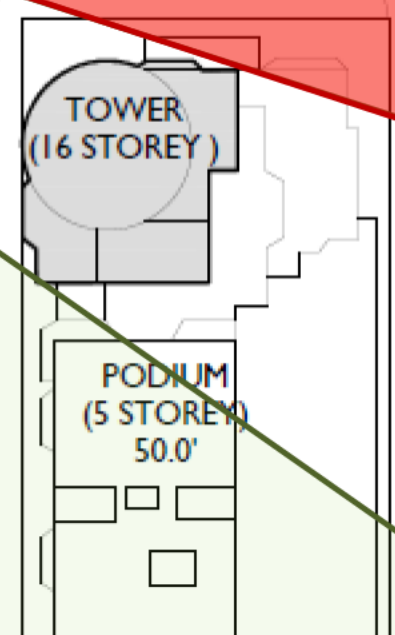
LANE

500 HELMCKEN STREET

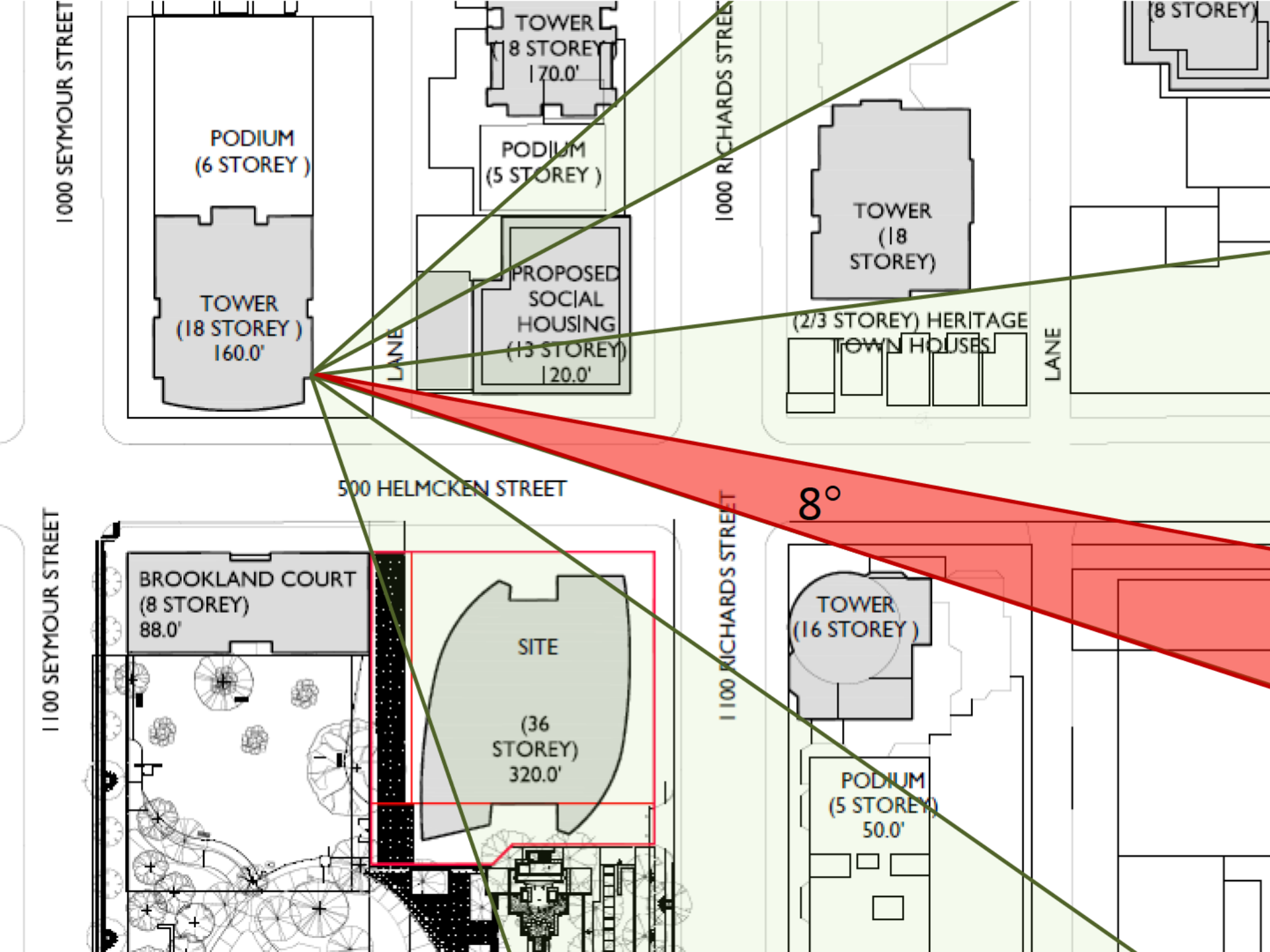
1100 SEYMOUR STREET



1100 RICHARDS STREET



8°



1000 SEYMOUR

PODIUM
(6 STOREY)

TOWER
(18 STOREY)
160.0'

PODIUM
(5 STOREY)

PROPOSED
SOCIAL
HOUSING
(13 STOREY)
120.0'

1000 RICHARDS

TOWER
(18
STOREY)

(2/3 STOREY) HERITAGE
TOWN HOUSES

LANE

LANE

500 HELMCKEN STREET

BROOKLAND COURT
(8 STOREY)
88.0'

SITE

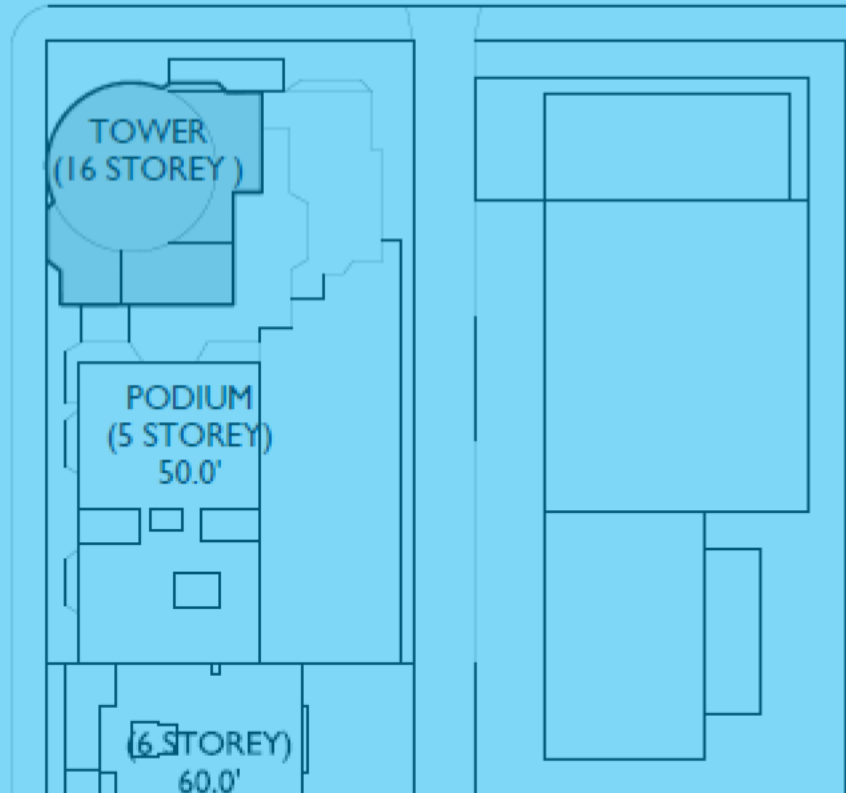
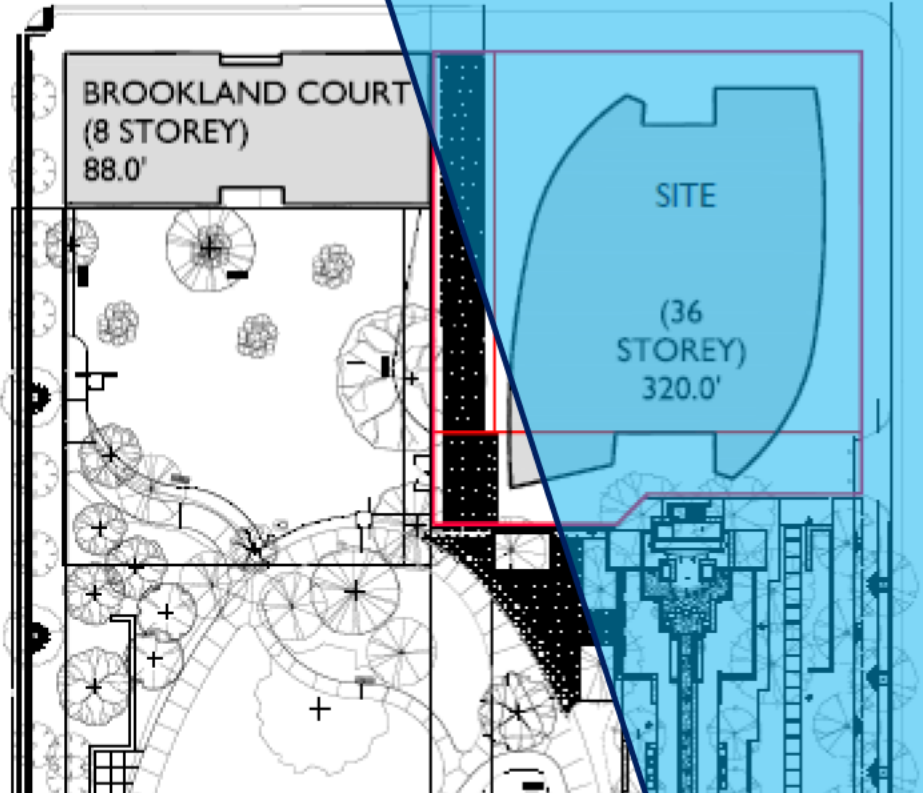
(36
STOREY)
320.0'

1100 RICHARDS STREET

TOWER
(16 STOREY)

PODIUM
(5 STOREY)
50.0'

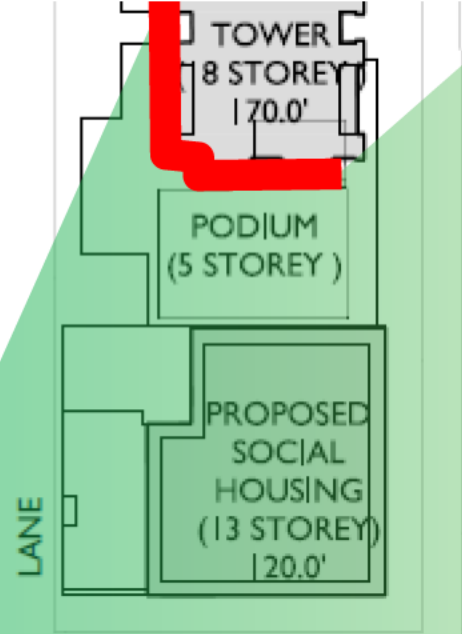
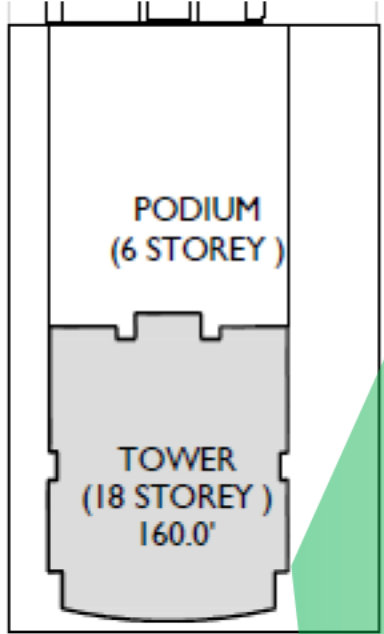
(6 STOREY)
60.0'



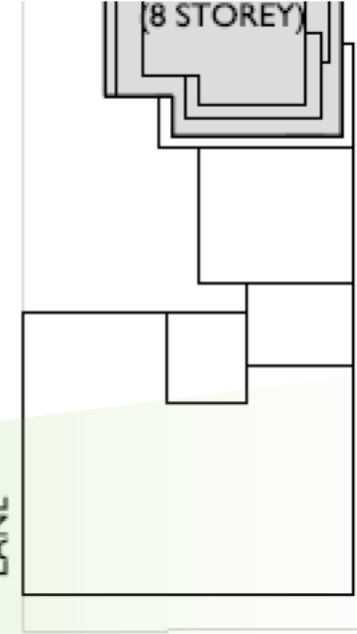
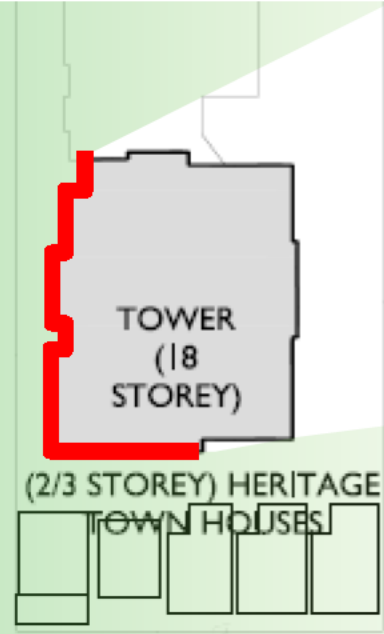




1000 SEYMOUR STREET

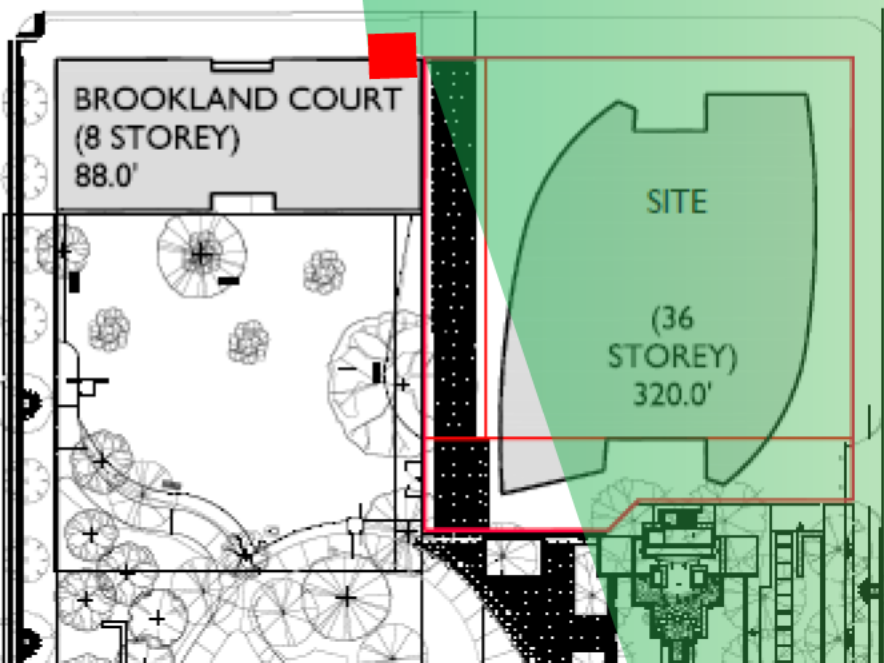


1000 RICHARDS STREET

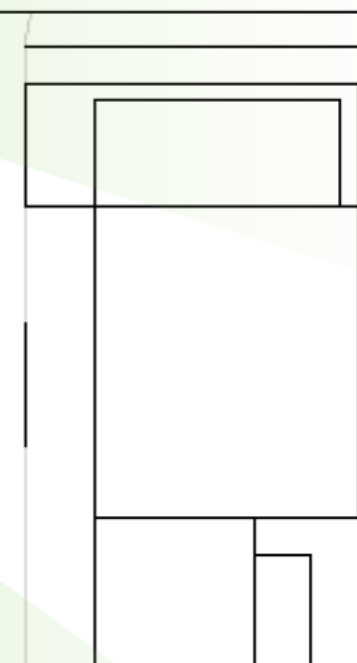
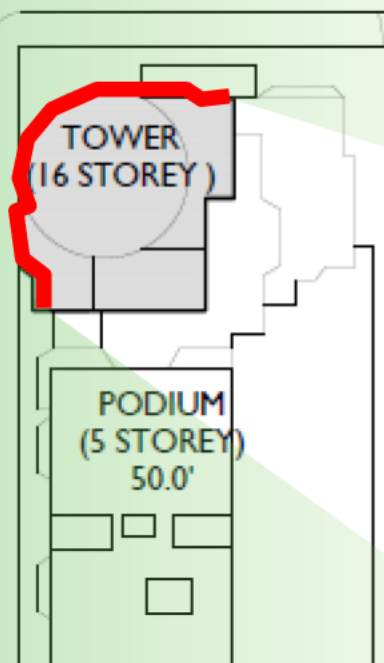


500 HELMCKEN STREET

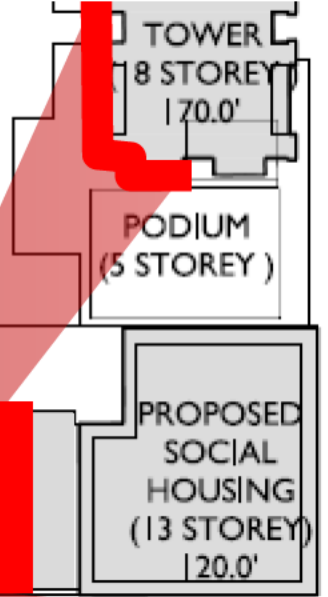
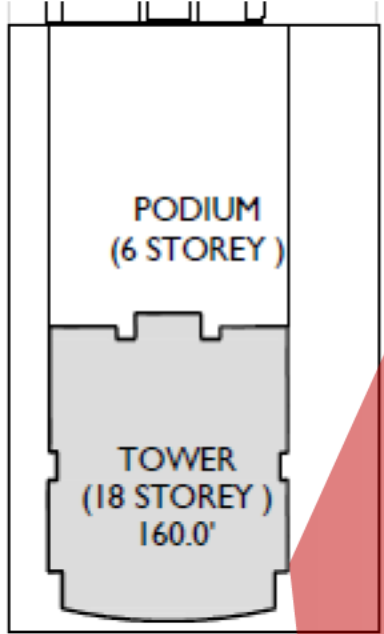
1100 SEYMOUR STREET



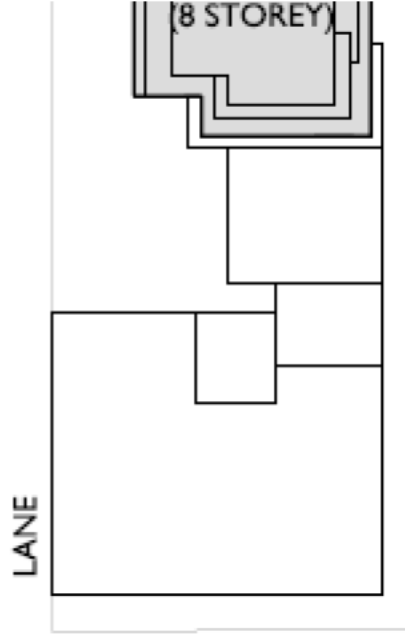
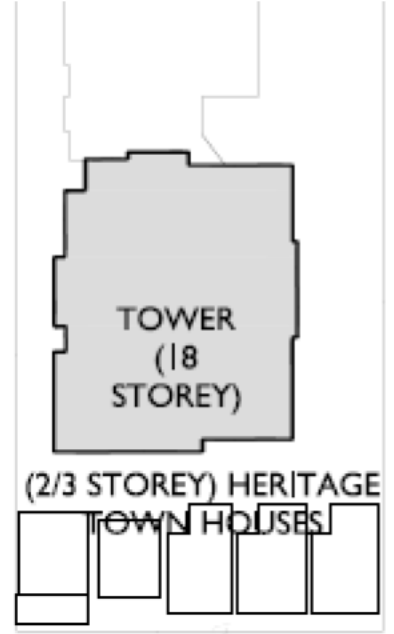
1100 RICHARDS STREET



1000 SEYMOUR STREET



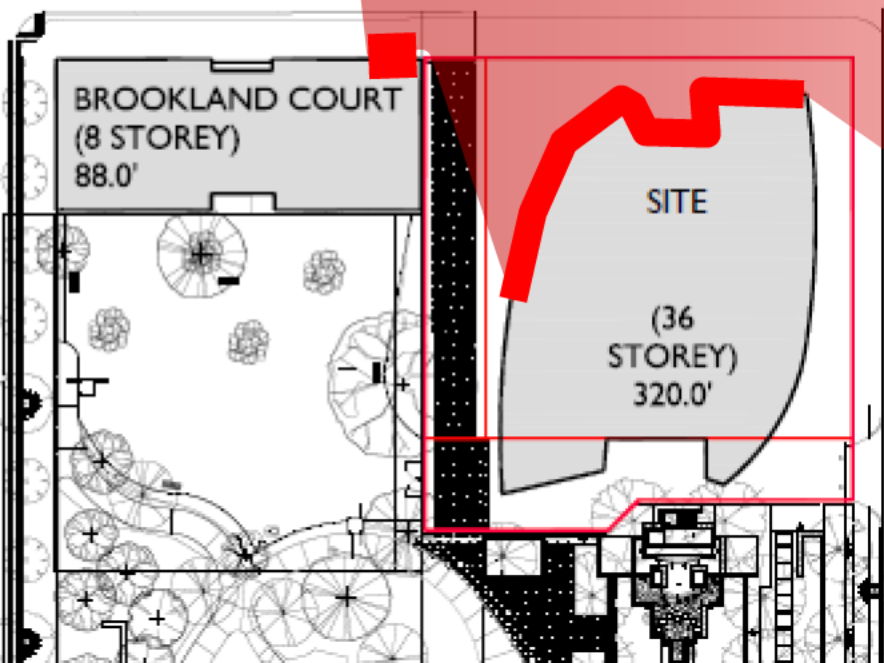
1000 RICHARDS STREET



LANE

500 HELMCKEN STREET

1100 SEYMOUR STREET



1100 RICHARDS STREET

