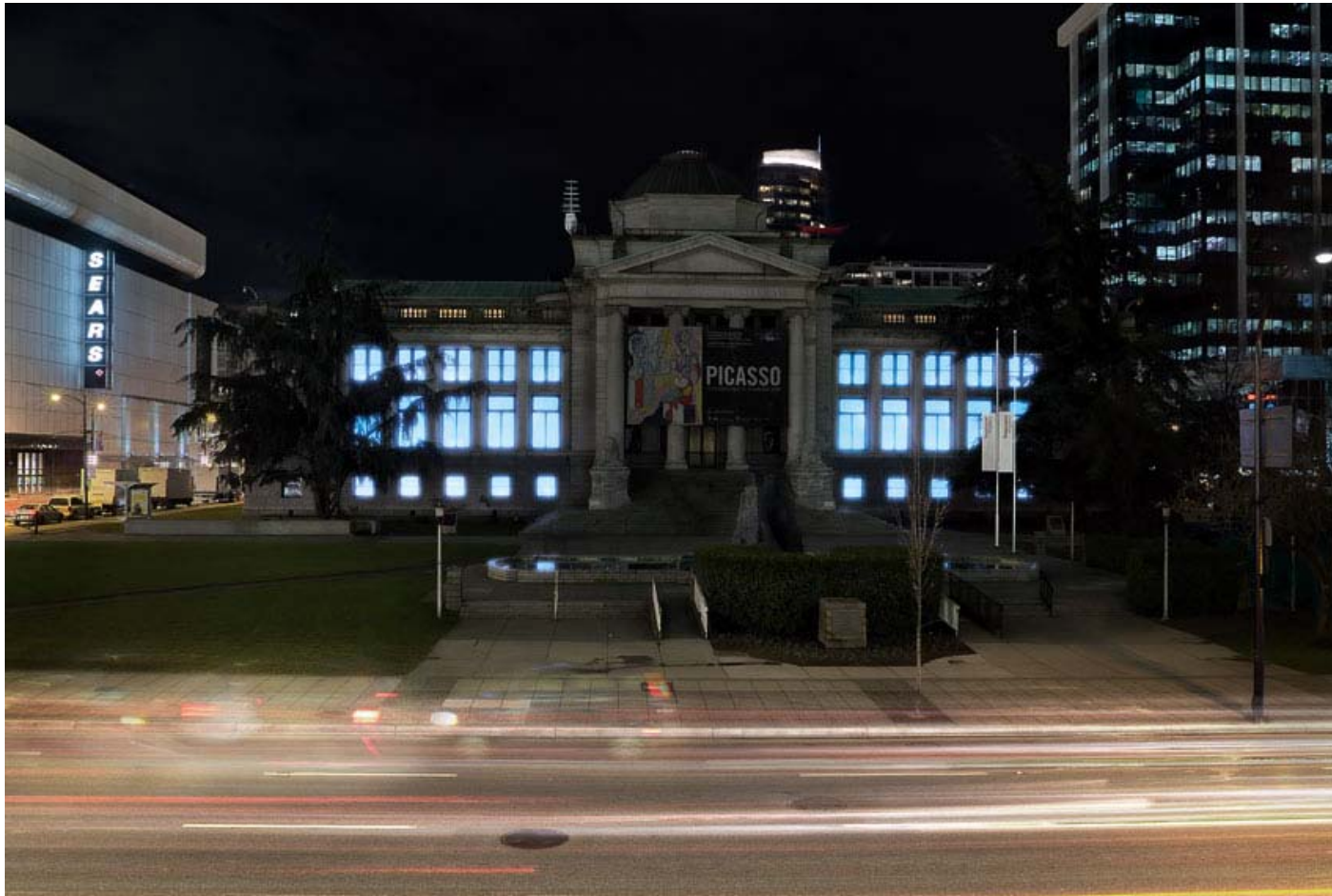




Brian Jungen,
Shanghai Biennale, Vancouver Pavilion, 2012
Installation View



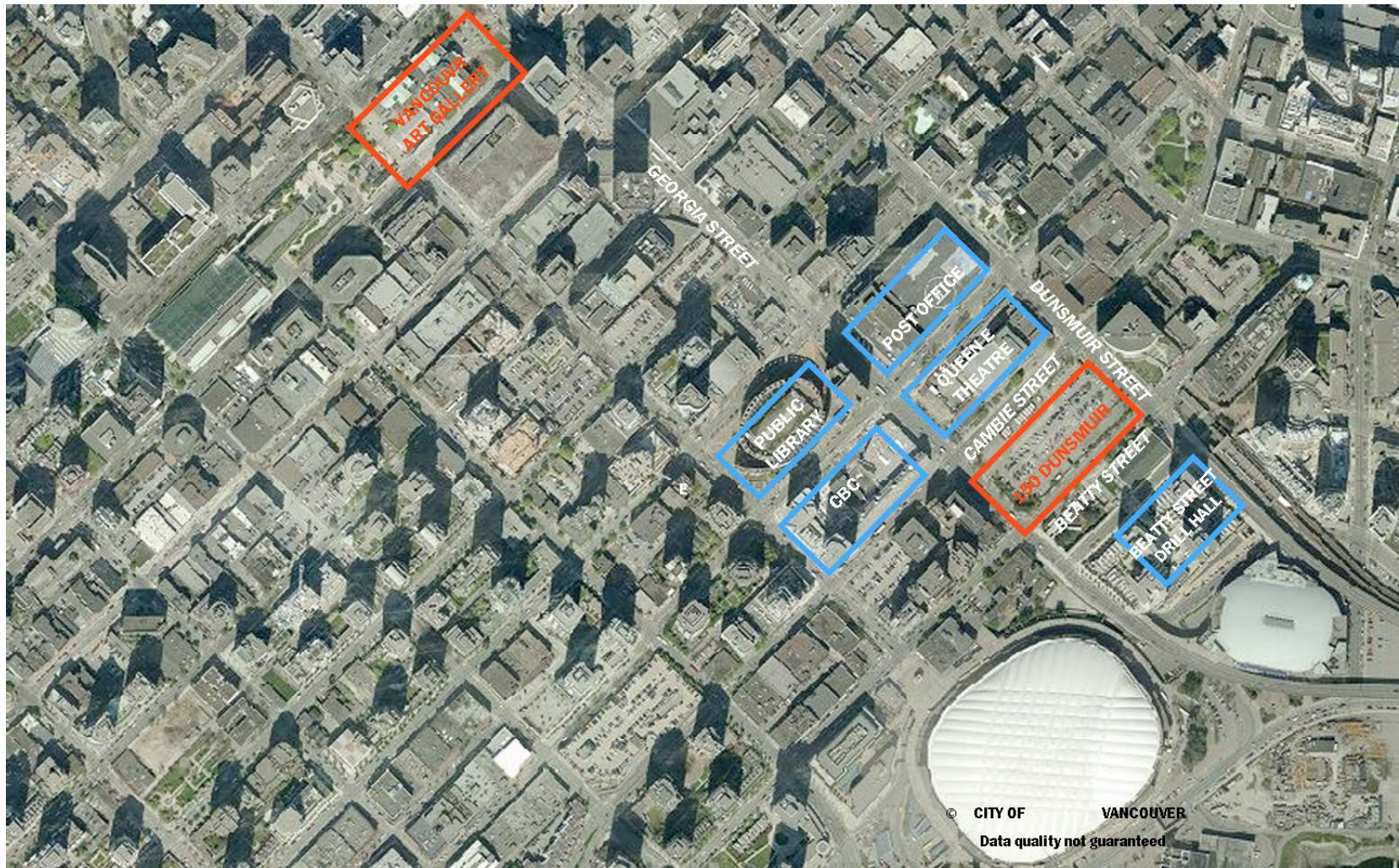
Neil Campbell, Installation



Master Planning 2004/05



Location of Alternative Sites



Overview of Larwell Park Site

2011 Facility Space Program

Functional Use Areas	Existing Space (gross square feet)	Proposed (gross square feet)
Exhibition	40,448	86,500
Education and Public Programming	6,049	21,400
Retail	15,157	37,300
Collections Management	33,881	49,220
Other	23,775	45,110
Total Gross Building Area	172,320	311,389
Exterior	15,479	25,000

Overview

New Gallery | Capital & Impact

Capital
Costs -

Source:

BTY 2012

293 M Base Building

\$28 M Supplementary

Economic
Impact –
(1st 5 YRS)

Source:

PWC 2012

\$299 M GDP

5360 person years employment

Gov't revenue - primarily taxes
(\$26.2 M Federal, \$32 M
Provincial)

In the **2010 Association of Art Museum Directors Survey** of 149 art museums across North America, the Vancouver Art Gallery ranks:

- 10th in annual admission revenue
- 11th in the number of school groups annually
- 12th in annual number of website hits
- 13th in membership
- 13th in museum store revenue
- 16th in corporate sponsorship support
- 18th in overall annual attendance

NOTE: Survey includes the Metropolitan Museum of Art, the Museum of Modern Art, the National Gallery of Canada, the Art Gallery of Ontario, the Guggenheim, the Montreal Museum of Fine Art and the Chicago Institute Art, and the Smithsonian, among other major art museums across North America.

National Industry Norms

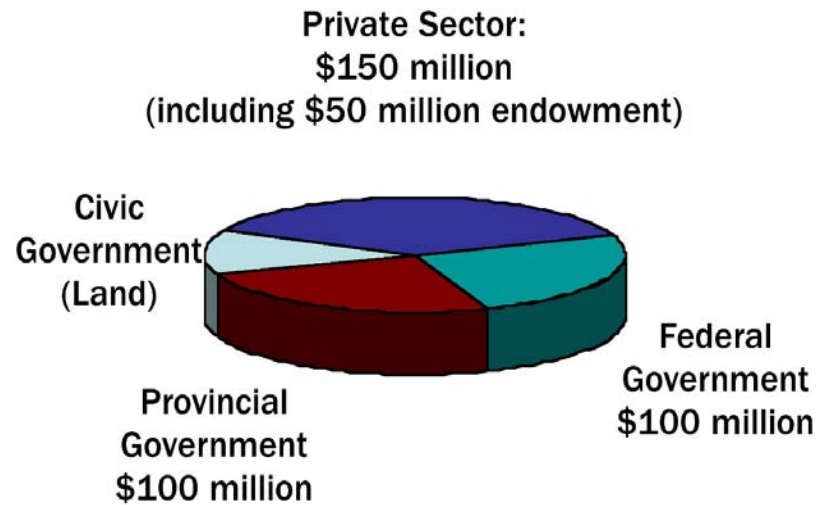
Sources of Operating Income	Heritage Survey 2009	Heritage Survey 2007	Vancouver Art Gallery 2011/12 Actuals
Earned	36.7%	36.2%	39.2%
Private	10.8%	11.8%	35.2%
Government	52.5%	52.0%	25.6%
Total	100%	100%	100%

Statistics Canada conducts periodic “Heritage Surveys” which include all types of museum-related institutions including art galleries. The latest survey with 2009 data had a sample size of 703 institutions.

Lord Business Plan:
Operating Plan

	Base Level	Year 2 Stabilize
FTEs	86	130
On-Site Attendance	260,000*	380,000
Adult Admission	\$20	\$20
Total Revenues	\$12.9 M	\$19.9 M
- Earned Income	\$6.4 M	\$10.3 M
- Government Revenues	\$3.3 M	\$3.3 M
- Private Fundraising/Endowment	\$3.2 M	\$6.3 M
- Total Government & Private Revenues	\$6.3 M	\$7.4 M
<ul style="list-style-type: none"> • <i>2012 estimated attendance in 2011 (actuals were 280,000)</i> • <i>Endowment will grow from \$11 M to \$61 M as part of the operating plan</i> 		

CAPITAL/ENDOWMENT CAMPAIGN FOR A NEW VANCOUVER ART GALLERY





**Marianne Nicolson,
The House of the Ghosts, 2008,
site-specific light projection**



*Michael Lin: A Modest Veil, 2010
Georgia Street Plaza, Vancouver Art Gallery*



Rodney Graham, Artist Model Posing for "Old Bugler, Among the Fallen, Battle of Beaune-Roland, 1870" in the studio of an unknown Military Painter, Paris, 1885, 2009



Artists for a new Vancouver Art Gallery



Vancouver Art Gallery Exhibitions, 2006-2010

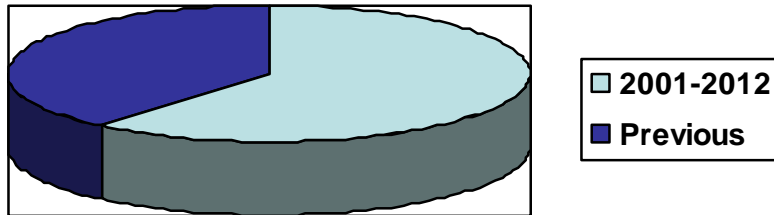
Permanent Collection

- 10,523 works
 - Major Collection of historical Canadian works
 - Most comprehensive collection of Emily Carr's work
 - Largest collection of Jeff Wall works held by a public institution
- One of North America's most comprehensive contemporary photo-based collections

In 2012

- Artworks acquired: 258 (98 BC-based artists)
 - Loans from the Collection: 144

Collection Growth: 2002-Present



Named Art Acquisition Funds

- Audain Emerging Artists Acquisition Fund: \$2 million
 - The Jean MacMillan Southam Art Acquisition Endowment Fund: \$1.5 million
 - Winn Estate Fund: \$1 million

Vancouver Art Gallery Endowment Fund
for Acquisition of Art: \$7.9 million



George Romney, *Portrait of Major Peirson*, 1771



Heiltsuk Artist, *Frontlet*, c. 1860



Lawren Harris, *Mount Thule, Bylot Island*, 1930



Henri Fuseli, *Dream of Belinda*, 1798-90



B.C. Binning, *Night Harbour*, 1950



Emily Carr, *Totem Poles Kitseukia*, 1912

Vancouver Art Gallery Permanent Collection



Michael Snow, *Mixed Feelings*, 1965



Claes Oldenburg, *Saw (Hard Version)*, 1969



Andy Warhol, *Mao*, 1972



Roy Lichtenstein, *Shipboard Girl*, 1965



Geoffrey Farmer, *The Surgeon and the Photographer* (detail), 2009



Prototype for *New Understanding #11*, 2002



Robert Davidson
Killer Whale Transforming into a Thunderbird, 2009
wood, paint



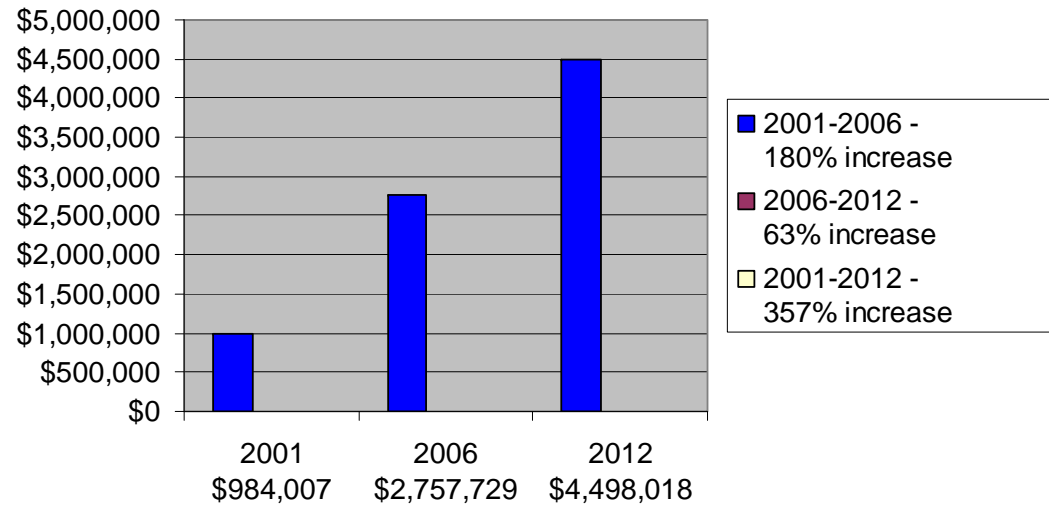
Jeff Wall, *The Pine on the Corner*, 1990

Vancouver Art Gallery Permanent Collection

2012 FAST FACTS

- 349,000 total attendance (280,000 at Gallery, 69,000 touring shows)
- 50% tourists
- 35,000 members
- 16 exhibitions, 340 artists,
326 performances, 11 books
- 364 school programs –
39,000 children participating
- 347 volunteers

Private Sector Fundraising for Annual Operations (per Audited Financial Statements)





LET ART LEAD



Beat Nation: Installation View

CELEBRATE PLACE



O Zhang, 2009-2010
Installation view at Vancouver Art Gallery Offsite

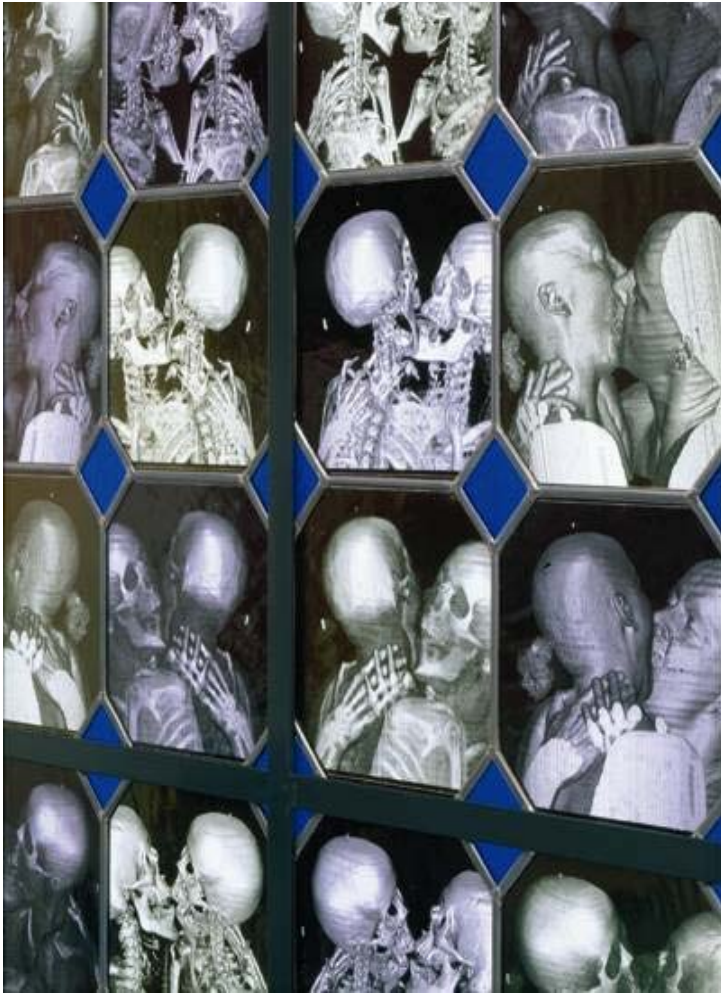


Bill Reid, *Phyllidula*, 1984-1985

EMBRACE THE PAST
AND OWN THE FUTURE



Leonardo da Vinci: The Mechanics of Man



Visceral Bodies, Installation View

MOBILIZE THE POWER OF THE PUBLIC



Fuse



Cue: Artists Videos, 2010

BUILD FOR A DIVERSITY OF ART FORMS



Massive Change: The Future of Global Design, 2004



Huang Yong Ping: *The Nightmare of George V*, 2002

DESIGN THE CHANGE



Andrea Zittel: A-Z Management and Maintenance Unit: Model 003, 1992



