



ARTS & CULTURE INDOOR EVENT PILOT PROGRAM FOR LIVE PERFORMANCE VENUES

Public Hearing
March 12, 2013



What it's really about...



The Issue



e.g. An art gallery (mostly)...

...and occasionally a performance space!

- ✓ Space Meets Retail Safety
- ✓ Land Use Allowed By Zoning

- ✗ Space Does Not Meet Assembly Occupancy Safety Requirements
- ✗ Zoning Bylaw Unclear

AGENDA



1. Council Direction
2. Project Goals
3. Challenges & Solutions

COUNCIL DIRECTION

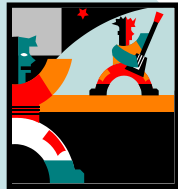
1. Asked staff to commence review
2. Approved, in principle, base life safety standards
3. Supported creation of a pilot program



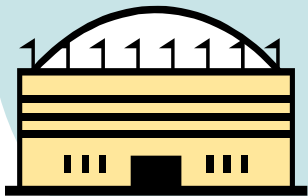
ENABLE MORE SPACES FOR LIVE EVENTS



Theatres
& Halls



Nightclubs

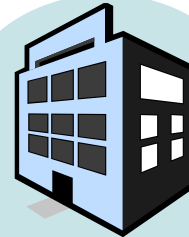


Arenas

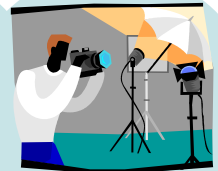
+



Galleries



Warehouses, Storage &
Factories



Production Studios



Artist Studios



Rehearsal Studios

CURRENT STATE
Traditional Venues Only

FUTURE STATE
Add Non-traditional Venues

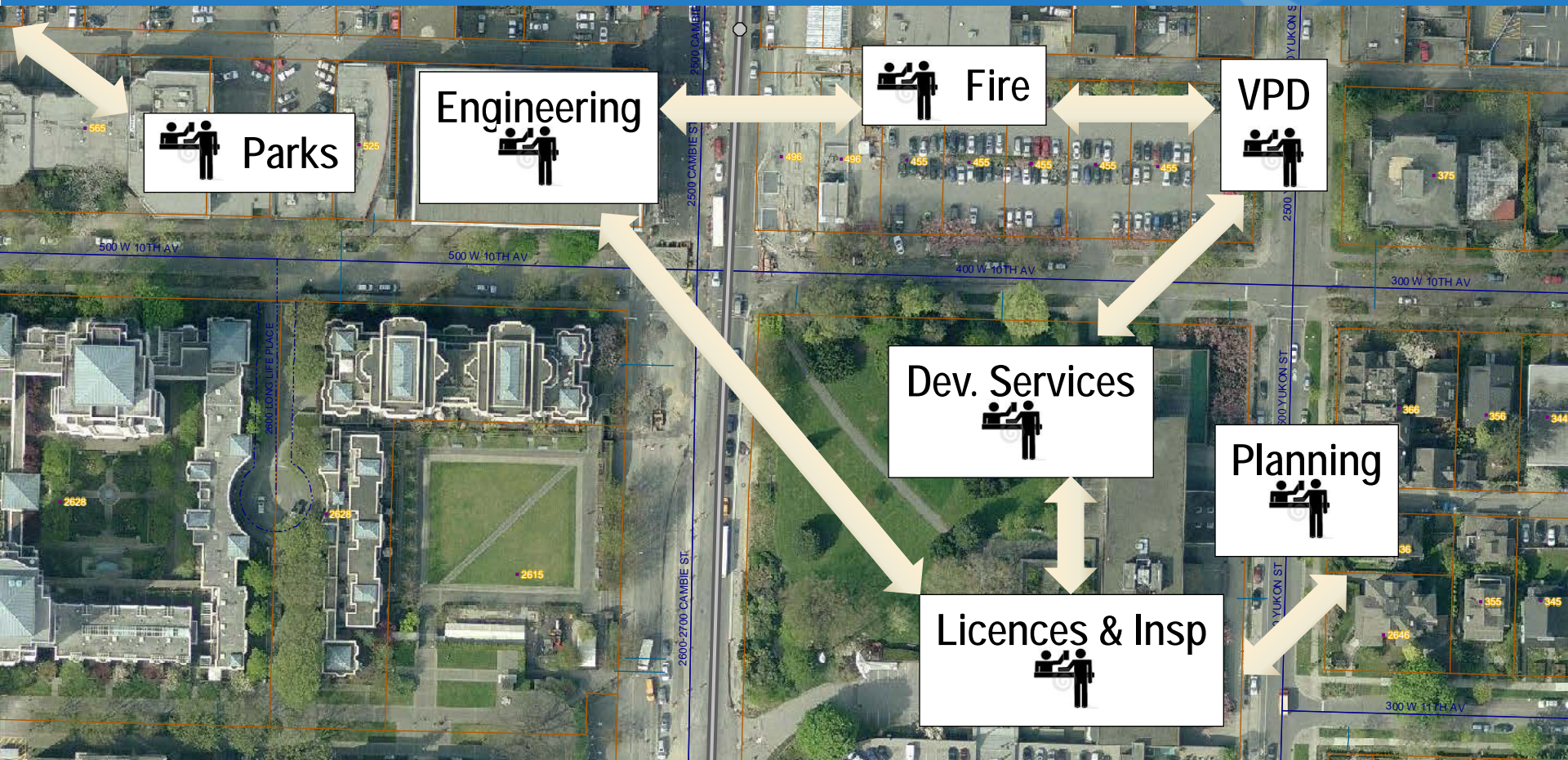
STAKEHOLDER FEEDBACK

3 issues



PROCESS CHALLENGES

Current Application Process



REGULATORY CHALLENGES

Highly Restrictive Building Code Requirements:

- Significant exiting
- Full disabled accessibility
- Non-combustible construction



FEE CHALLENGES

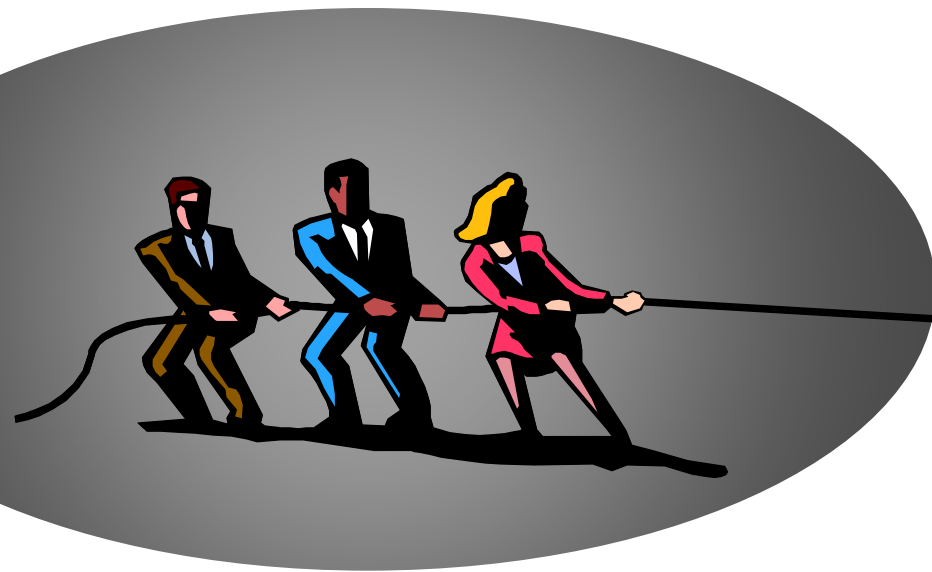
Current fee structure is cost prohibitive.

An event could cost:

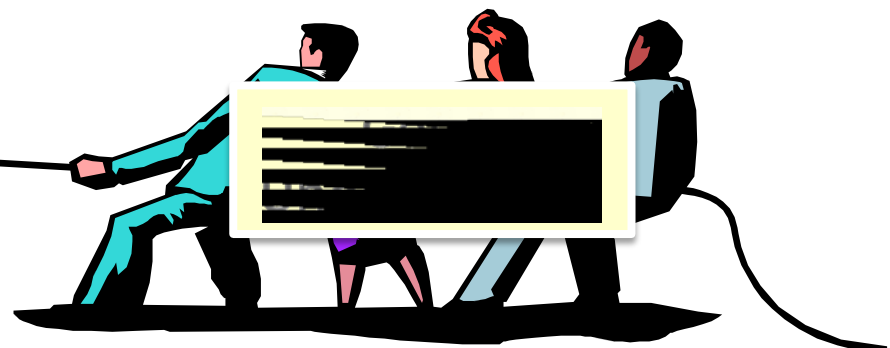
- License (\$145)
- Fire Occupancy Load (\$300 - \$500)
- Development Permit (\$398)
- Building Permit (\$117 and up)
- TOTAL: at least \$960

CITY AND INDUSTRY CHALLENGES

The Compliance Tug-of-War



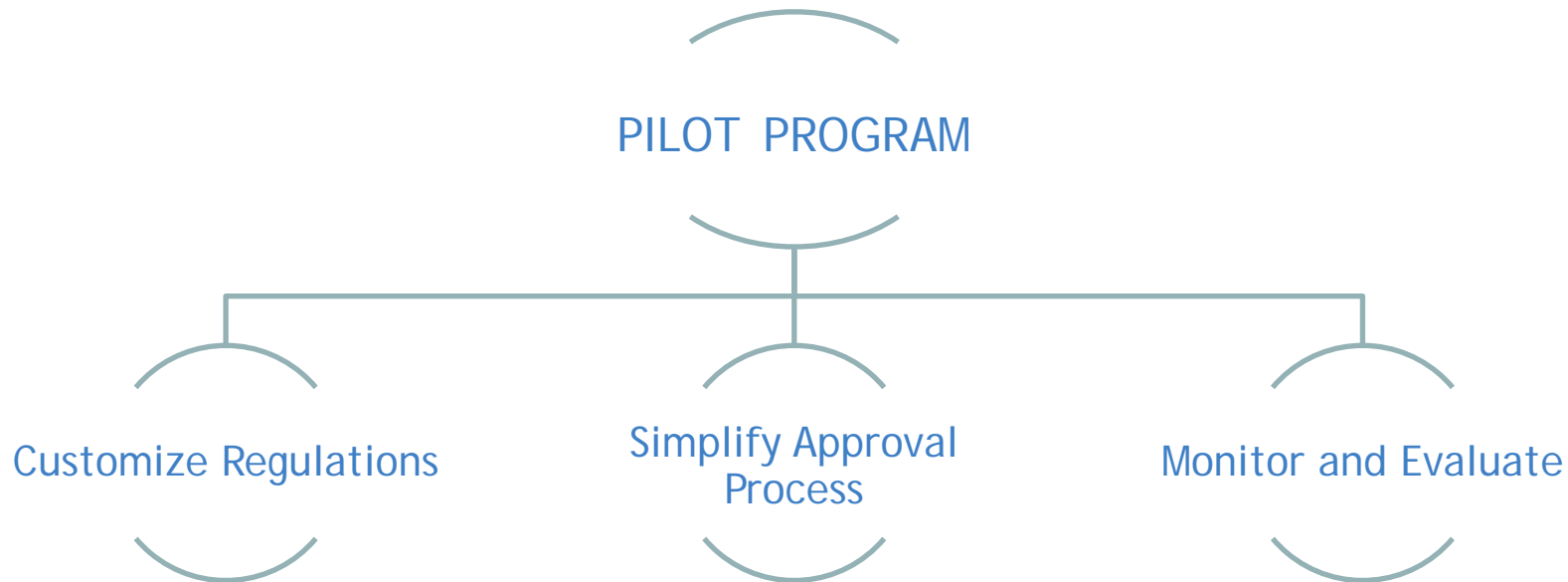
City staff try to pull applicants into the bubble of compliance...



... while performers & venue owners resist!

PROPOSED SOLUTION

Two Year Pilot Program to Test Effectiveness



CUSTOMIZED REGULATIONS

Required Cultural Program: performances (including participation)

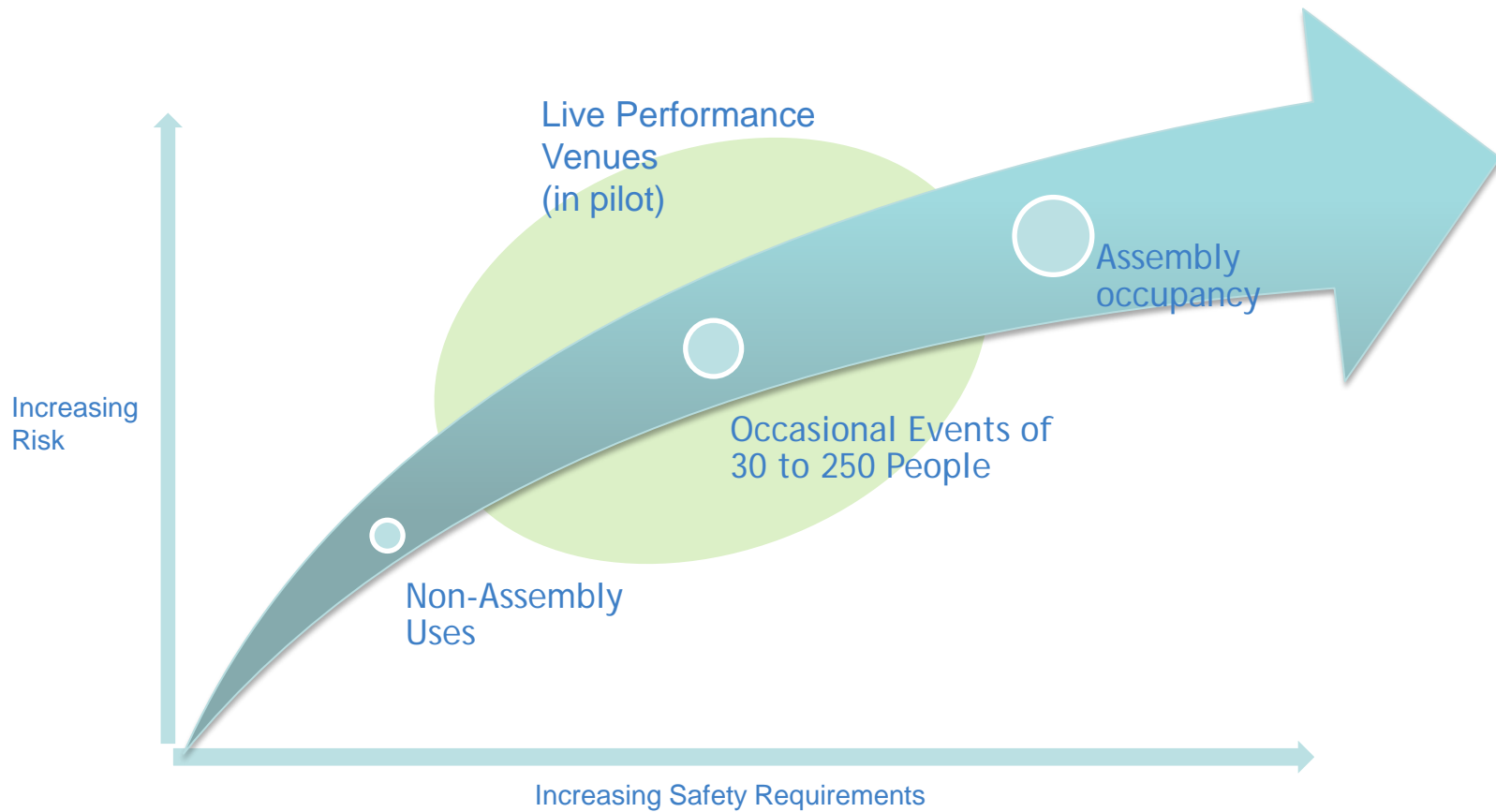
Applies to Non-assembly Spaces: retail (e.g. galleries), cafes, warehouses, production studios, artist studios, and rehearsal studios.
Not residential units.

Small Events: up to 250 people

Occasional Use: up to 2 times per month

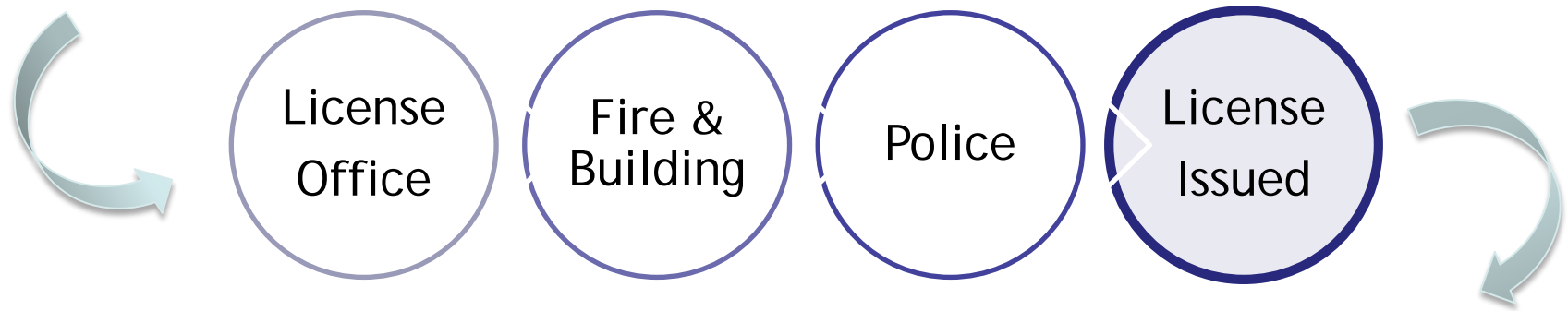
Liquor: allowed with safety/security measures

CUSTOMIZED REGULATIONS: Risk Assessment Model



SINGLE APPLICATION APPROVALS PROCESS

Applicant makes a single application here...



...and gets approval from same place!

Modest License Fees

Event Size	Fee
1-60 guests	\$25
61-150 guests	\$100
151-250 guests	\$150

Very small events
require minimal
processing and
complexity

Graduated fees based
on processing time and
complexity

MONITORING & EVALUATION

- ✓ Approach: risk management and random checks
- ✓ Strategies for compliance
- ✓ Collect data



SUMMARY

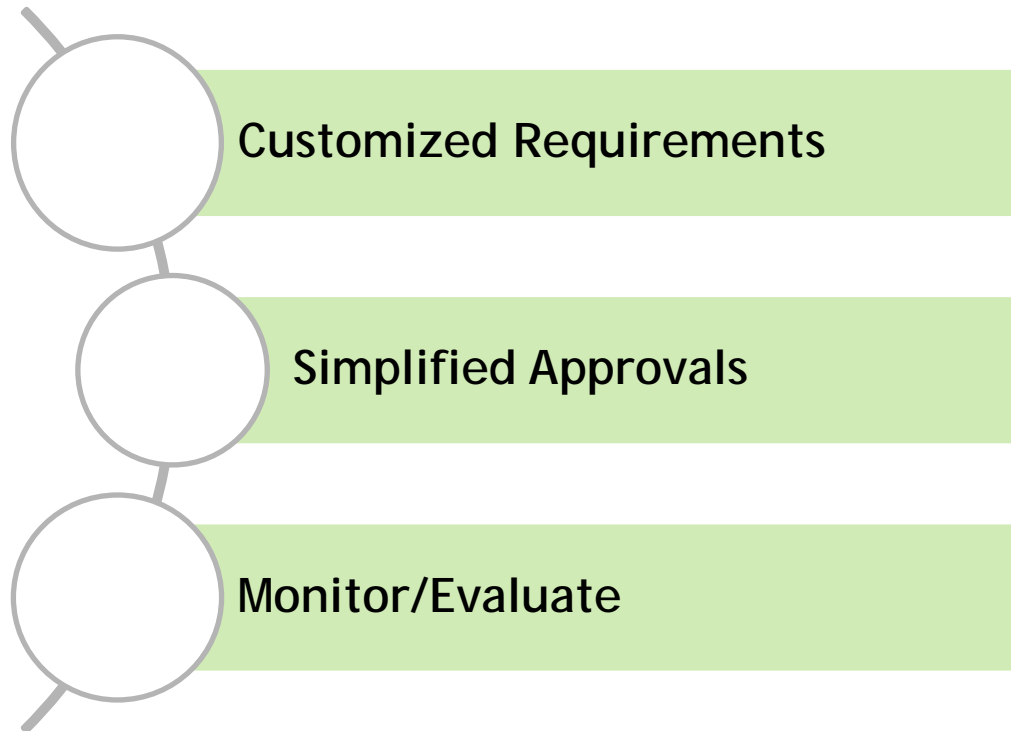




Photo Credits (with thanks)

- *Red Green*, Alfred Hermida
- *Embracing Voices*, courtesy Coastal Jazz and Blues Society
- *Fine Mist, Astoria Hotel*: Steve Louie, courtesy Discorder Magazine
- *Jerry Whitehead*: Michael Scales, courtesy Eastside Culture Crawl
- *Monumental*, Chris Randle, courtesy Holly Body Tattoo Society
- *Rickshaw Theatre*, courtesy Junebug Enterprises
- *Scotiabank Dance Centre*, courtesy Dance Centre
- *Vancouver Folk Festival*, courtesy Folk Festival Society
- *World Police & Fire Games*: Coast Photo, courtesy Donnelly Productions
- *Kokoro Dance and the VSO*: Raul P
- *Pipedream Theatre / Nine*: Rick Chung