

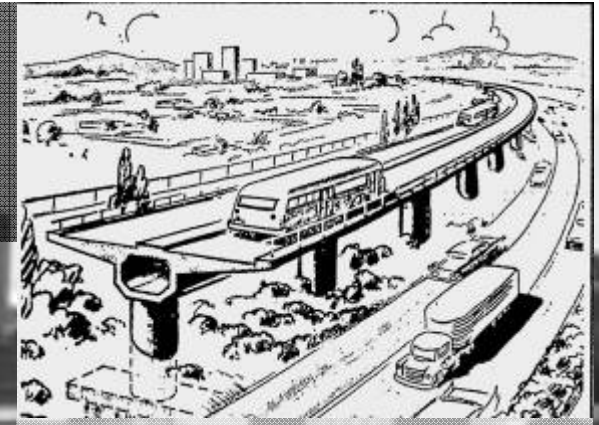


VIADUCTS & FALSE CREEK FLATS PLANNING:
eastern core strategy

PURPOSE

- VIADUCTS STUDY PHASE ONE: Report Back
 - Recommendation for a Comprehensive and Strategic Approach for next steps, including:
 - “BIG PICTURE” look at the Eastern Core
 - Detailed Land Use and Transportation Options for Viaducts
 - Creative public and expert input
- (Approach will coordinate initiatives, while allowing for interim decisions)

GEORGIA & DUNSMUIR VIADUCTS (early 1970s)



Vancouver Sun, April 1959



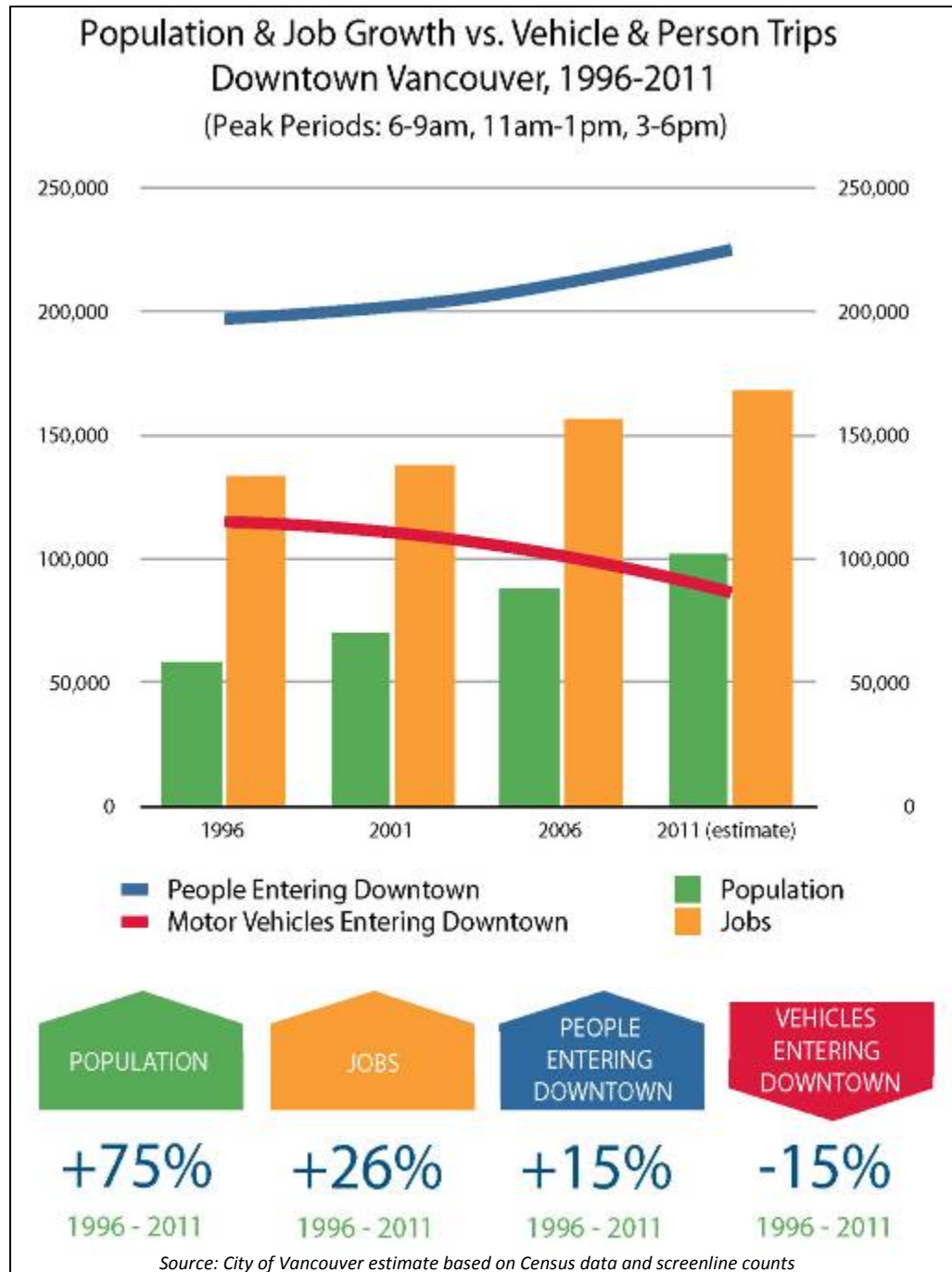
GEORGIA & DUNSMUIR VIADUCTS STUDY, phase I

The first phase of work explored the feasibility of modifying the structures. Topics included:

1. TRANSPORTATION
2. STRUCTURES
3. SOILS

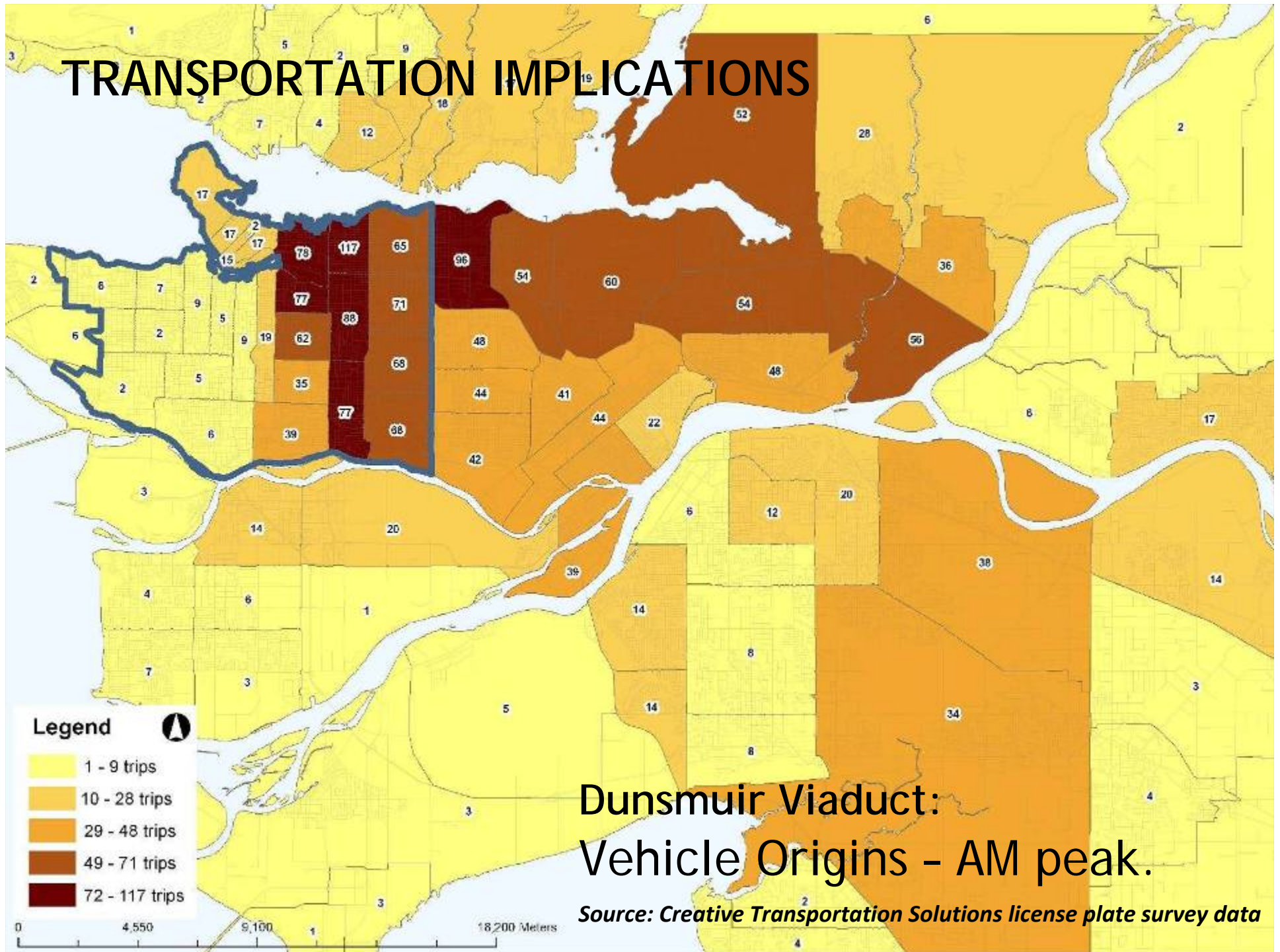


TRAVEL TRENDS IN DOWNTOWN



- More JOBS
- More PEOPLE
- More TRIPS
- Fewer CARS

TRANSPORTATION IMPLICATIONS



Dunsmuir Viaduct:
Vehicle Origins - AM peak.

Source: Creative Transportation Solutions license plate survey data



CAPACITY SCENARIOS EXPLORED

20% REDUCTION

- Minimal diversion of existing trips
- Feasible in the short-term (5 years)

50% REDUCTION

- Some diversion of existing trips to adjacent routes or to transit
 - Requires increased trips to the downtown be accommodated by transit, walking, and cycling
- Feasible in the mid-term (5-10 years)

100% (COMPLETE REMOVAL)

- Significant diversion of existing trips to transit
 - Requires increased trips to the downtown be accommodated by transit, walking, and cycling
- Feasible in the long term (10+ years)

GEORGIA & DUNSMUIR VIADUCTS STUDY, phase I

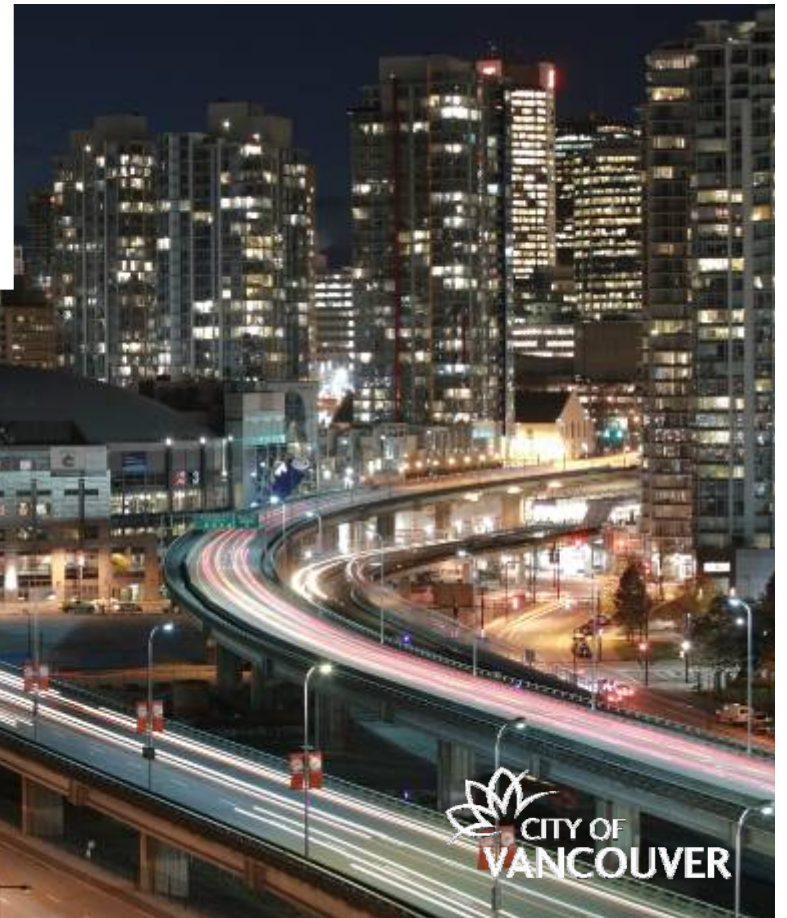
A SUMMARY OF ANALYSIS:

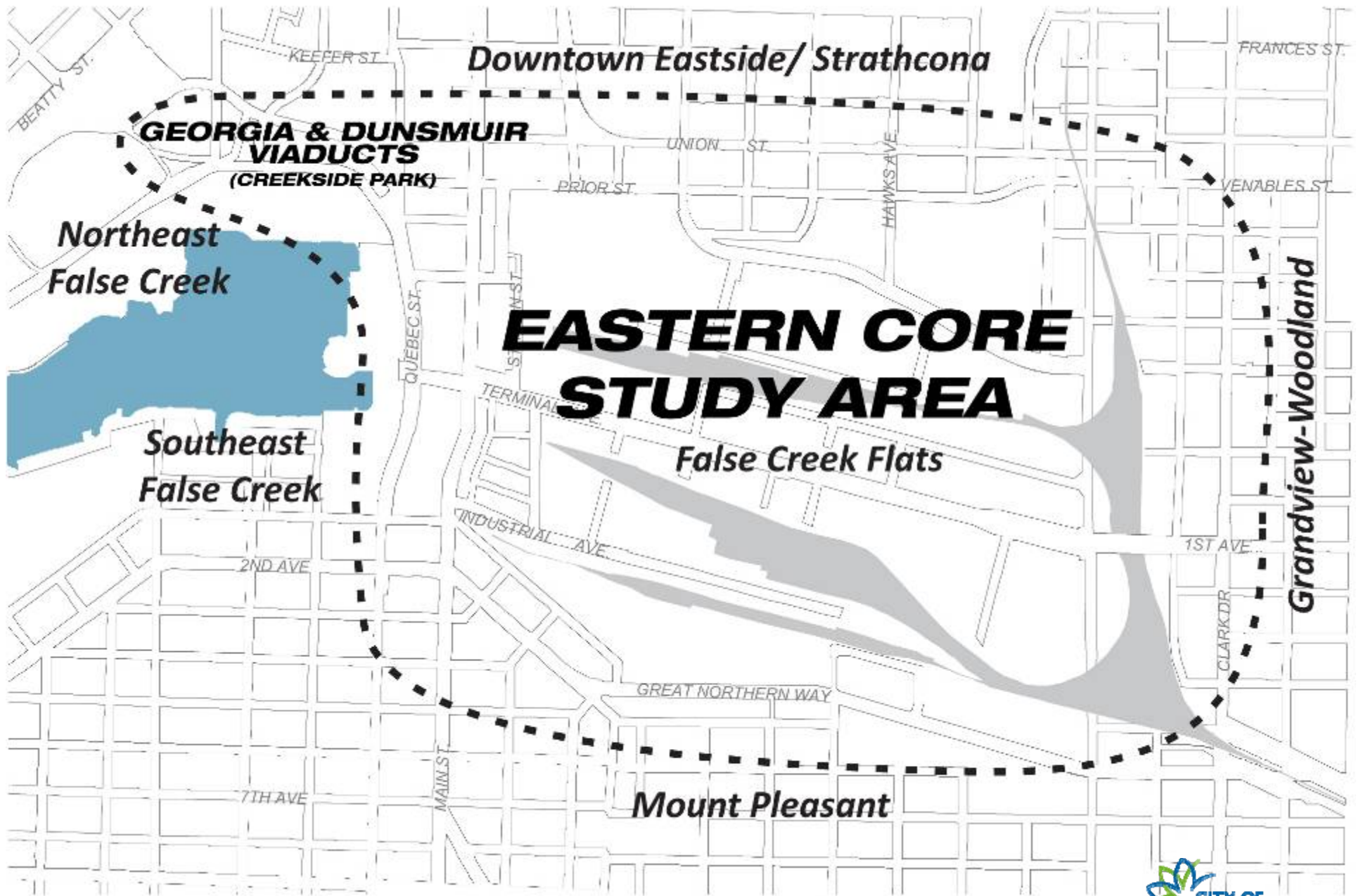
1. **transportation** impacts can be managed;
2. there are a number of options **structurally**; and
3. although there is **soil contamination** in the area the conditions are manageable



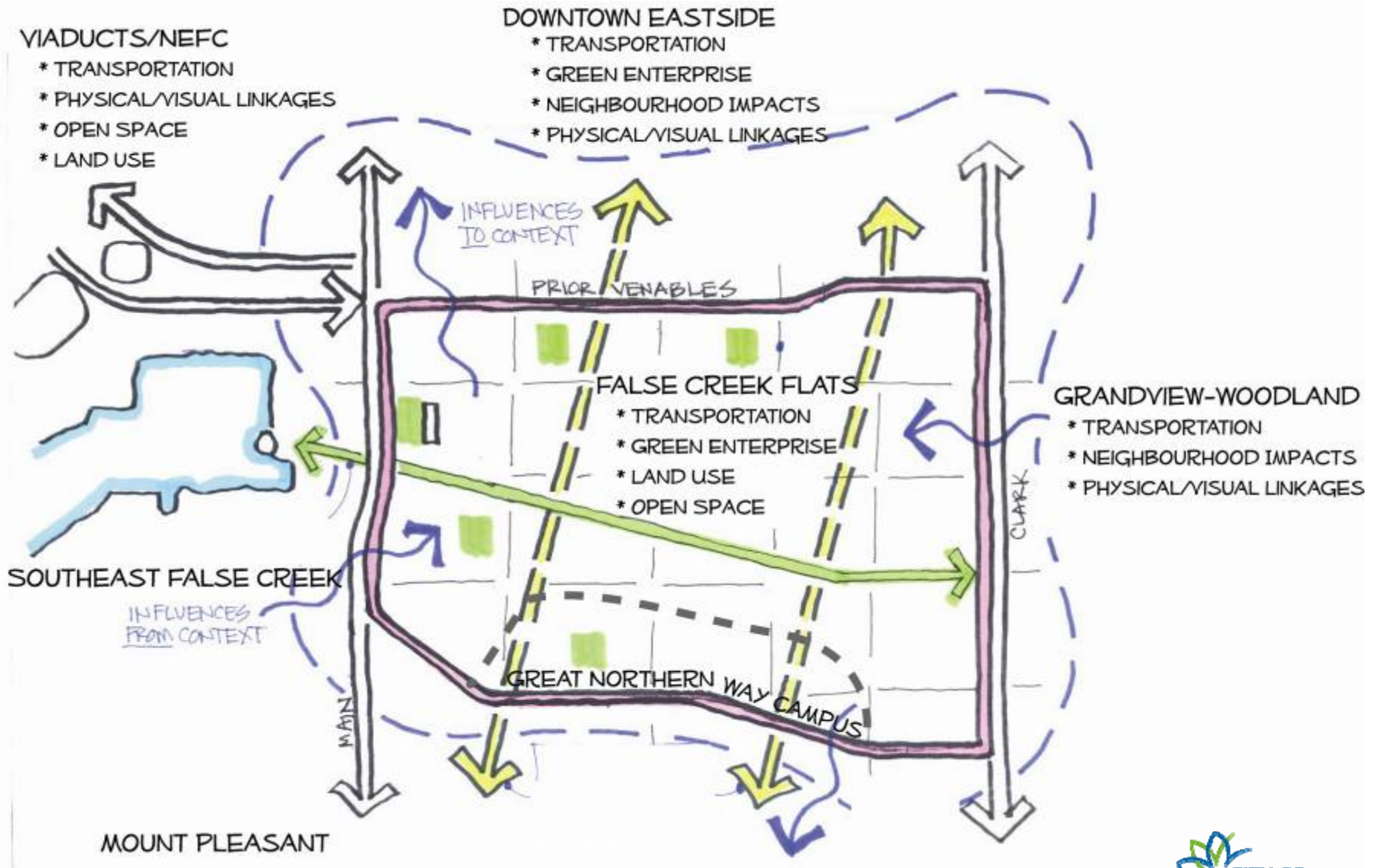
VANCOUVER'S VIADUCTS

examining them in their broader context



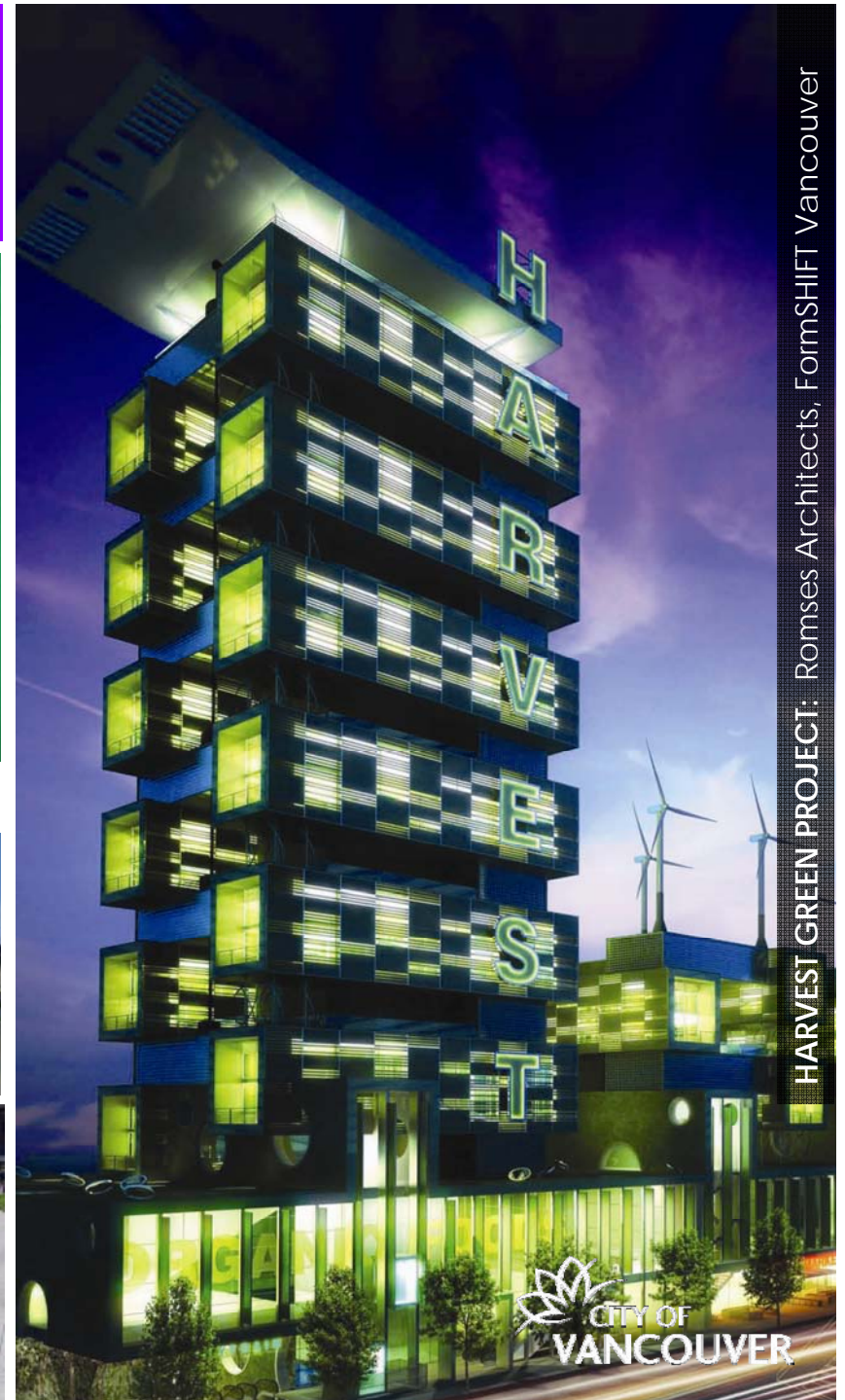


WHY A COMPREHENSIVE APPROACH FOR THE VIADUCTS & EASTERN CORE?



INNOVATIVE ENGAGEMENT & APPROACHES

- IDEAS COMPETITION
- SPECIAL URBAN DESIGN TEAM



HARVEST GREEN PROJECT: Romses Architects, FormSHIFT Vancouver

KEY OUTCOMES

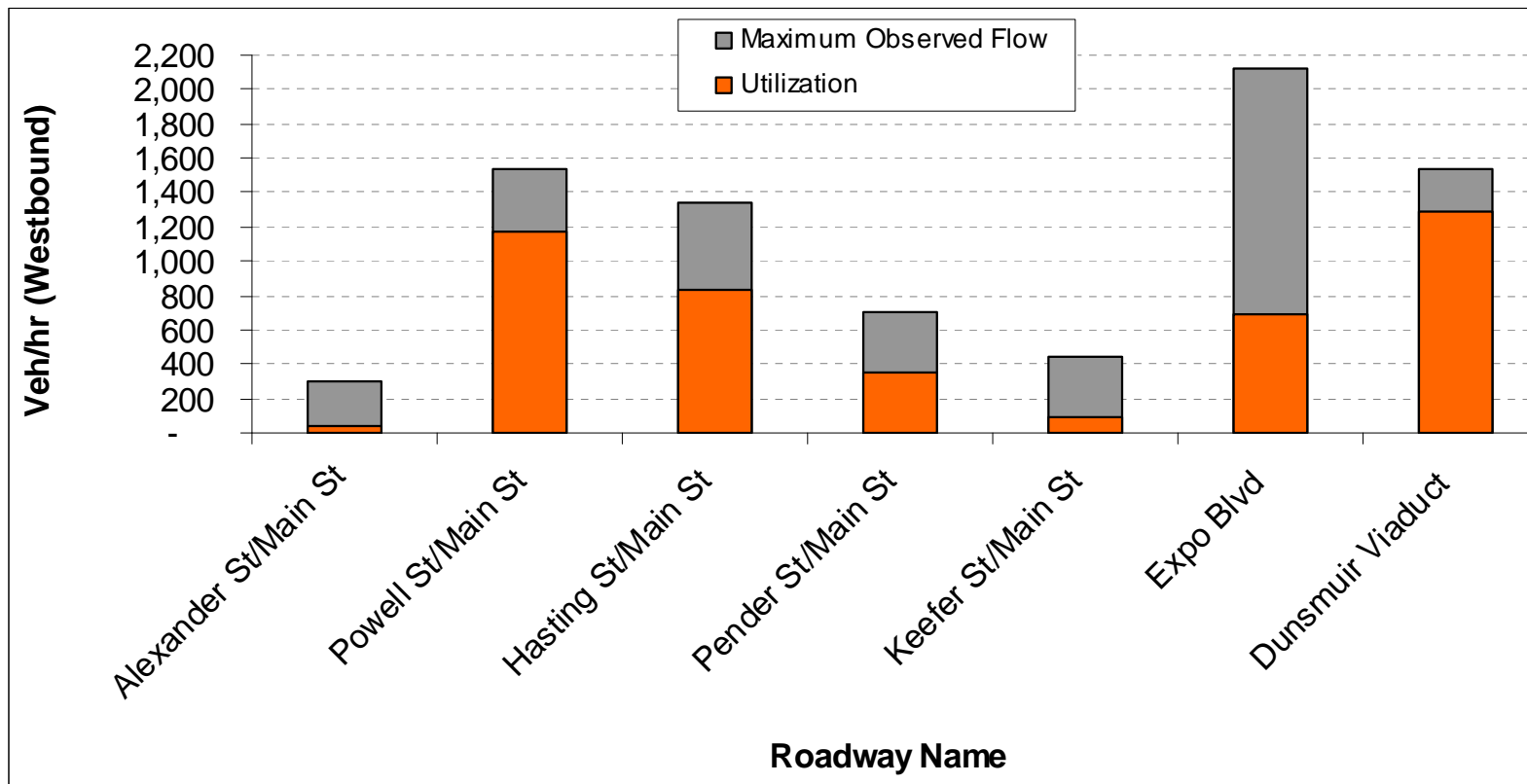
- **A 'BIG PICTURE' STRATEGY:** land use, transportation, urban design/open space opportunities across the Eastern Core;
- **DETAILED VIADUCTS CONCEPTS:** land use and transportation scenarios for the reconfiguration/removal of the viaducts, including costs;

QUESTIONS?



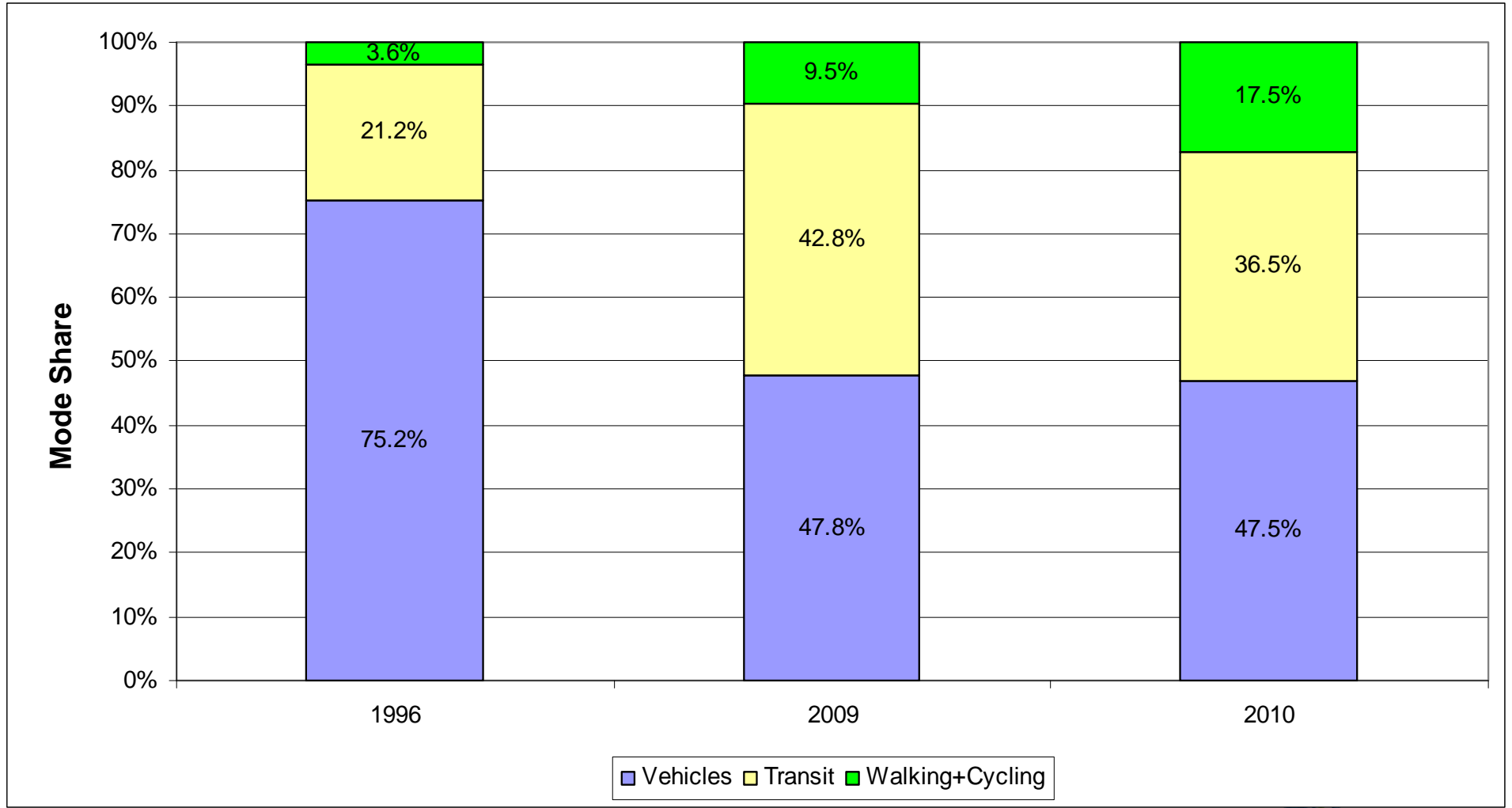
CAPACITY ASSESSMENT - ROADS

Road capacity across the downtown neck



Source: City of Vancouver 2010 traffic counts

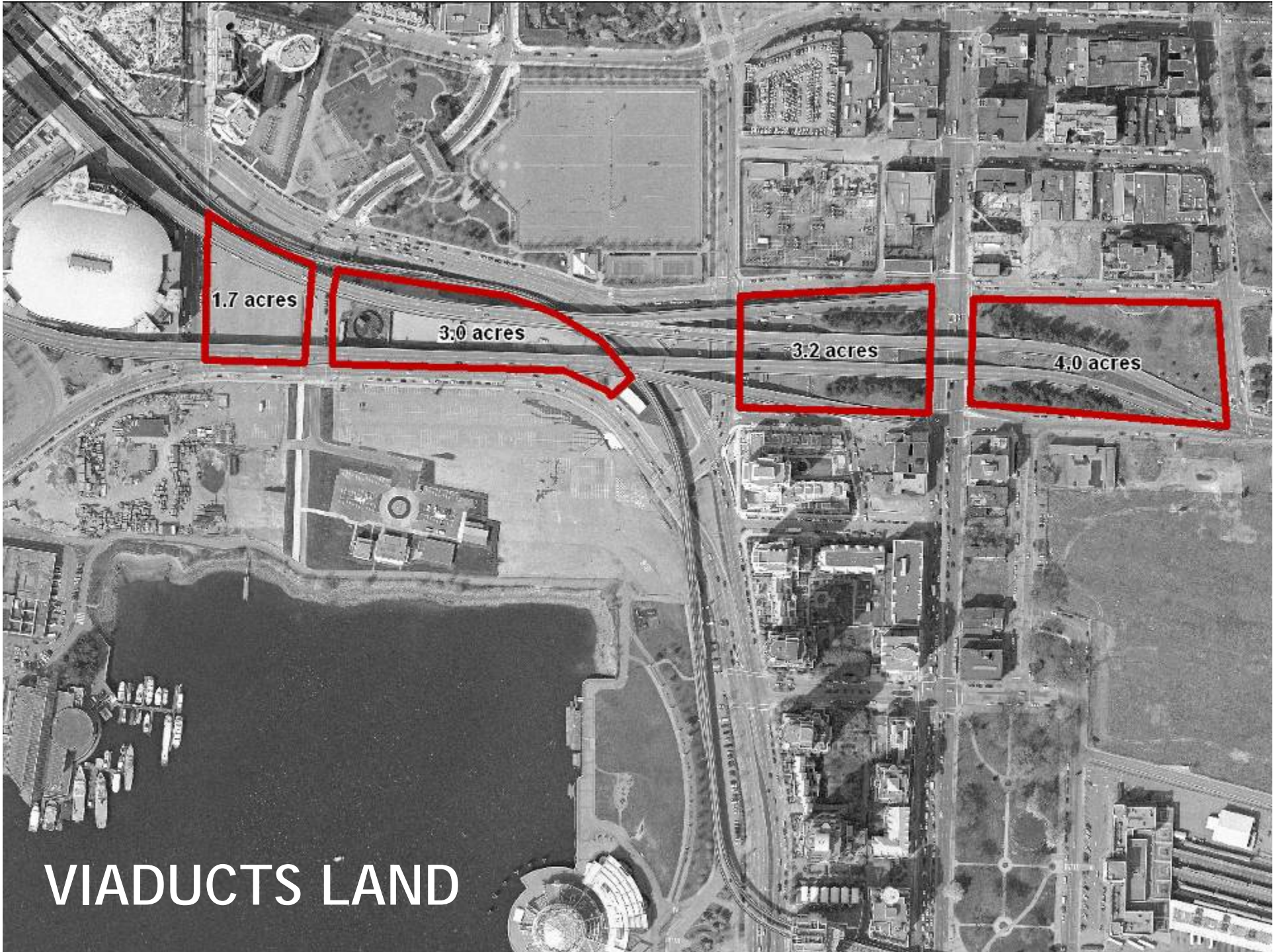
TRENDS ACROSS THE DOWNTOWN NECK - MODE SHARE



Source: 1996, 2009 and 2010 Screenline Counts

THE EASTERN CORE





VIADUCTS LAND