

A.2

CONVEYANCE OF LAND FOR MUNICIPAL PURPOSES

RESOLUTION OF THE CITY COUNCIL

MOVED by Councillor _____

SECONDED by Councillor _____

THAT WHEREAS the registered owner, the City of Vancouver, wishes to establish for highway purposes lands in the City of Vancouver, Province of British Columbia, more particularly known and described as follows:

All that portion of Lot 19, Block 4, District Lots 668 to 670, Plan 1369, Group 1, New Westminster District, as shown heavy outlined on a plan of survey completed March 23, 2010, attested to by Daniel R. Parker, B.C.L.S. and marginally numbered LD4904, a print of which is attached hereto.

AND WHEREAS it is deemed expedient and in the public interest to allocate the said lands for highway purposes.

BE IT RESOLVED that the above described lands are hereby allocated for highway purposes and declared to form and to constitute a portion of a road.

* * * * *

(Establishing Highway on the north side of 37th Avenue, between Chester Street and Prince Albert Street, adjacent to 5333 Prince Albert Street, for Greenways purposes, as per December 1, 2009, Council authority)

**REFERENCE PLAN TO ACCOMPANY RESOLUTION
OF THE COUNCIL OF THE CITY OF VANCOUVER
ESTABLISHING FOR HIGHWAY PURPOSES A
PORTION OF LOT 19, BLOCK 4,
DISTRICT LOTS 668 TO 670, PLAN 1369,
GROUP 1, NEW WESTMINSTER DISTRICT**

PLAN BCP

DEPOSITED IN THE LAND TITLE OFFICE AT
NEW WESTMINSTER, BRITISH COLUMBIA,
THIS DAY OF _____, 2010.

REGISTRAR

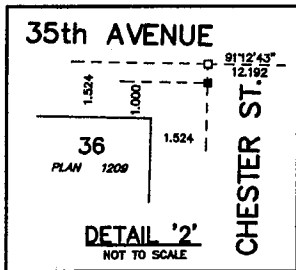
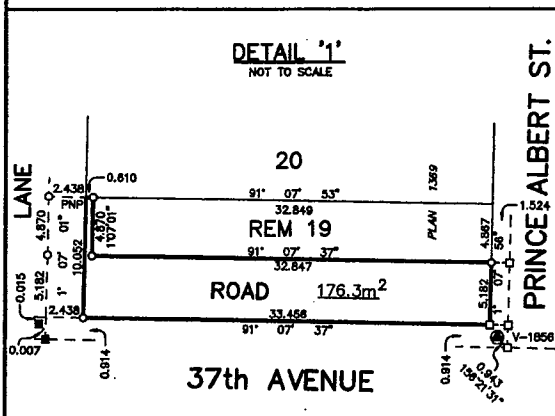
REFERENCE NO.

PURSUANT TO SECTION 291, VANCOUVER CHARTER
BCGS 926.025

10 0 10 20 30 40 50 METRES

ALL DISTANCES ARE IN METRES AND DECIMALS THEREOF.

THE INTENDED PLOT SIZE OF THIS PLAN IS 432mm IN WIDTH BY
580mm IN HEIGHT (C SIZE) WHEN PLOTTED AT A SCALE OF 1:500.



LEGEND

INTEGRATED SURVEY AREA No.31, CITY OF VANCOUVER, NAD(83)CSRS.

GRID BEARINGS ARE DERIVED FROM OBSERVATIONS BETWEEN
GEODETIC CONTROL MONUMENTS V-1856 AND V-1882.

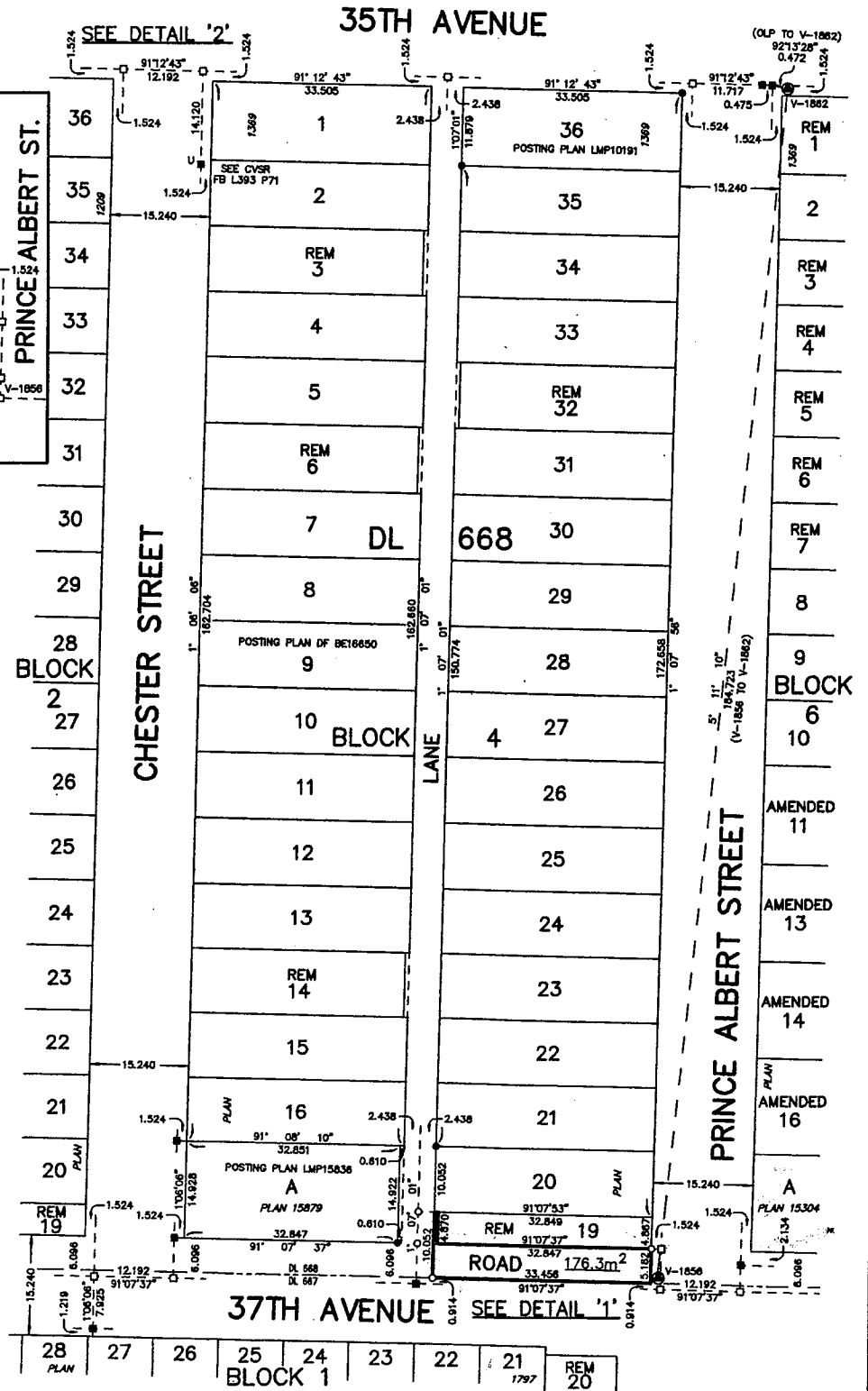
THIS PLAN SHOWS HORIZONTAL GROUND-LEVEL DISTANCES
EXCEPT WHERE OTHERWISE NOTED. TO COMPUTE GRID
DISTANCES, MULTIPLY GROUND-LEVEL DISTANCES BY
COMBINED FACTOR 0.9995904.

- INDICATES CONTROL MONUMENT FOUND
- INDICATES LEAD PLUG FOUND
- INDICATES LEAD PLUG PLACED
- INDICATES STANDARD IRON POST FOUND
- INDICATES STANDARD IRON POST PLACED
- INDICATES UNREGISTERED
- CVSR INDICATES CITY OF VANCOUVER SURVEY RECORDS
- PNP INDICATES POSTING NOT POSSIBLE

I, DANIEL R. PARKER, A BRITISH COLUMBIA LAND SURVEYOR,
CERTIFY THAT I WAS PRESENT AT AND PERSONALLY SUPERINTENDED
THE SURVEY REPRESENTED BY THIS PLAN, AND THAT THE SURVEY
AND PLAN ARE CORRECT. THE FIELD SURVEY WAS COMPLETED ON
THE 19th DAY OF MARCH, 2010. THE PLAN WAS COMPLETED
AND CHECKED, AND THE CHECKLIST FILED UNDER #108079,
ON THE 23rd DAY OF MARCH, 2010.

D.R. Parker

B. C. L. S.



THIS PLAN LIES WITHIN THE GREATER VANCOUVER REGIONAL DISTRICT

LD 4904

LD 4904