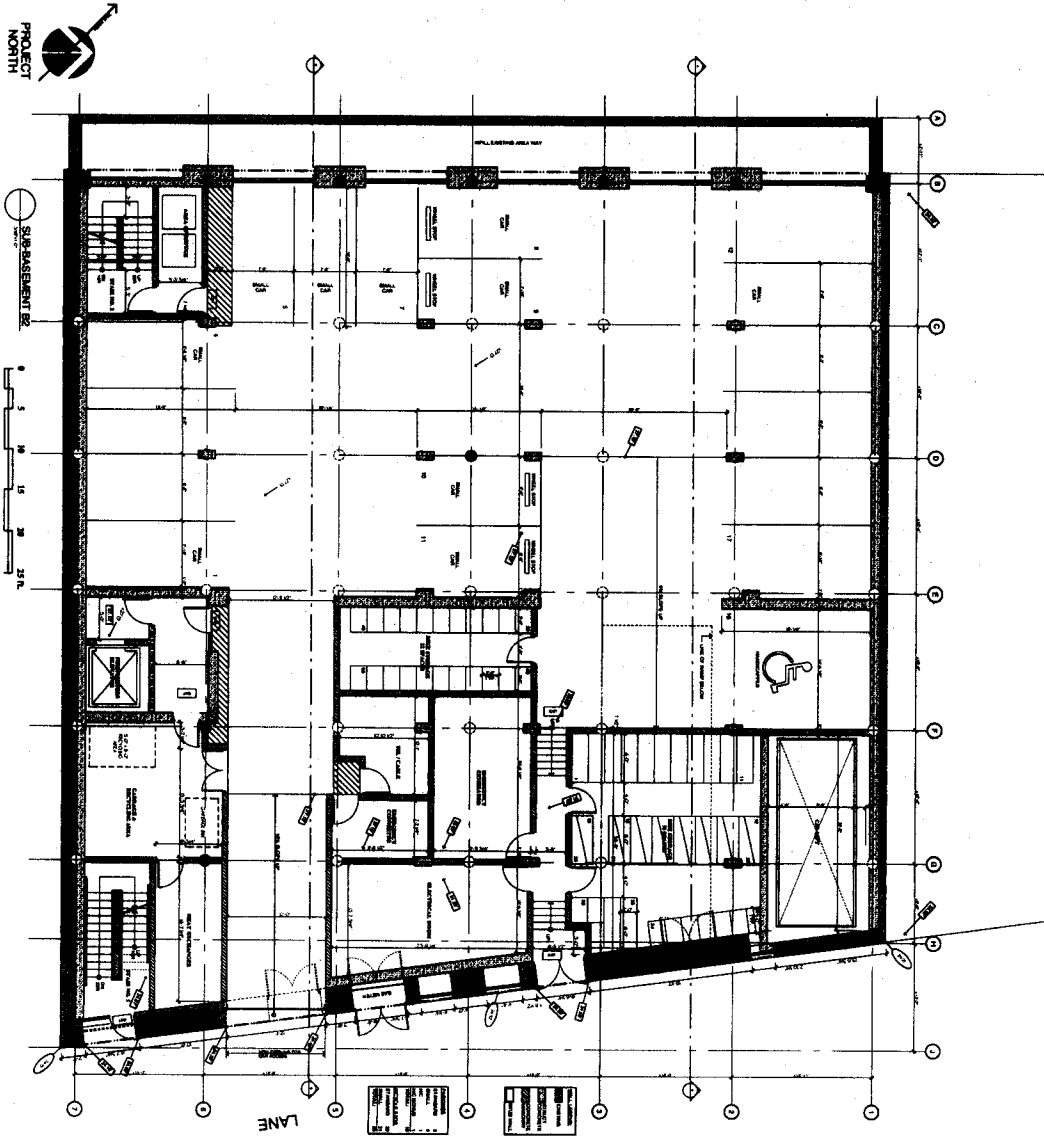


CRANE BUILDING

**540 BEATTY STREET
VANCOUVER, B.C.**

DATE		BY	
1.0	1.15.00	1.0	1.15.00
2.0	1.15.00	2.0	1.15.00
3.0	1.15.00	3.0	1.15.00
4.0	1.15.00	4.0	1.15.00
5.0	1.15.00	5.0	1.15.00
6.0	1.15.00	6.0	1.15.00
7.0	1.15.00	7.0	1.15.00
8.0	1.15.00	8.0	1.15.00
9.0	1.15.00	9.0	1.15.00
10.0	1.15.00	10.0	1.15.00
11.0	1.15.00	11.0	1.15.00
12.0	1.15.00	12.0	1.15.00
13.0	1.15.00	13.0	1.15.00
14.0	1.15.00	14.0	1.15.00
15.0	1.15.00	15.0	1.15.00
16.0	1.15.00	16.0	1.15.00
17.0	1.15.00	17.0	1.15.00
18.0	1.15.00	18.0	1.15.00
19.0	1.15.00	19.0	1.15.00
20.0	1.15.00	20.0	1.15.00
21.0	1.15.00	21.0	1.15.00
22.0	1.15.00	22.0	1.15.00
23.0	1.15.00	23.0	1.15.00
24.0	1.15.00	24.0	1.15.00
25.0	1.15.00	25.0	1.15.00
26.0	1.15.00	26.0	1.15.00
27.0	1.15.00	27.0	1.15.00
28.0	1.15.00	28.0	1.15.00
29.0	1.15.00	29.0	1.15.00
30.0	1.15.00	30.0	1.15.00
31.0	1.15.00	31.0	1.15.00
32.0	1.15.00	32.0	1.15.00
33.0	1.15.00	33.0	1.15.00
34.0	1.15.00	34.0	1.15.00
35.0	1.15.00	35.0	1.15.00
36.0	1.15.00	36.0	1.15.00
37.0	1.15.00	37.0	1.15.00
38.0	1.15.00	38.0	1.15.00
39.0	1.15.00	39.0	1.15.00
40.0	1.15.00	40.0	1.15.00
41.0	1.15.00	41.0	1.15.00
42.0	1.15.00	42.0	1.15.00
43.0	1.15.00	43.0	1.15.00
44.0	1.15.00	44.0	1.15.00
45.0	1.15.00	45.0	1.15.00
46.0	1.15.00	46.0	1.15.00
47.0	1.15.00	47.0	1.15.00
48.0	1.15.00	48.0	1.15.00
49.0	1.15.00	49.0	1.15.00
50.0	1.15.00	50.0	1.15.00
51.0	1.15.00	51.0	1.15.00
52.0	1.15.00	52.0	1.15.00
53.0	1.15.00	53.0	1.15.00
54.0	1.15.00	54.0	1.15.00
55.0	1.15.00	55.0	1.15.00
56.0	1.15.00	56.0	1.15.00
57.0	1.15.00	57.0	1.15.00
58.0	1.15.00	58.0	1.15.00
59.0	1.15.00	59.0	1.15.00
60.0	1.15.00	60.0	1.15.00
61.0	1.15.00	61.0	1.15.00
62.0	1.15.00	62.0	1.15.00
63.0	1.15.00	63.0	1.15.00
64.0	1.15.00	64.0	1.15.00
65.0	1.15.00	65.0	1.15.00
66.0	1.15.00	66.0	1.15.00
67.0	1.15.00	67.0	1.15.00
68.0	1.15.00	68.0	1.15.00
69.0	1.15.00	69.0	1.15.00
70.0	1.15.00	70.0	1.15.00
71.0	1.15.00	71.0	1.15.00
72.0	1.15.00	72.0	1.15.00
73.0	1.15.00	73.0	1.15.00
74.0	1.15.00	74.0	1.15.00
75.0	1.15.00	75.0	1.15.00
76.0	1.15.00	76.0	1.15.00
77.0	1.15.00	77.0	1.15.00
78.0	1.15.00	78.0	1.15.00
79.0	1.15.00	79.0	1.15.00
80.0	1.15.00	80.0	1.15.00
81.0	1.15.00	81.0	1.15.00
82.0	1.15.00	82.0	1.15.00
83.0	1.15.00	83.0	1.15.00
84.0	1.15.00	84.0	1.15.00
85.0	1.15.00	85.0	1.15.00
86.0	1.15.00	86.0	1.15.00
87.0	1.15.00	87.0	1.15.00
88.0	1.15.00	88.0	1.15.00
89.0	1.15.00	89.0	1.15.00
90.0	1.15.00	90.0	1.15.00
91.0	1.15.00	91.0	1.15.00
92.0	1.15.00	92.0	1.15.00
93.0	1.15.00	93.0	1.15.00
94.0	1.15.00	94.0	1.15.00
95.0	1.15.00	95.0	1.15.00
96.0	1.15.00	96.0	1.15.00
97.0	1.15.00	97.0	1.15.00
98.0	1.15.00	98.0	1.15.00
99.0	1.15.00	99.0	1.15.00
100.0	1.15.00	100.0	1.15.00

A2



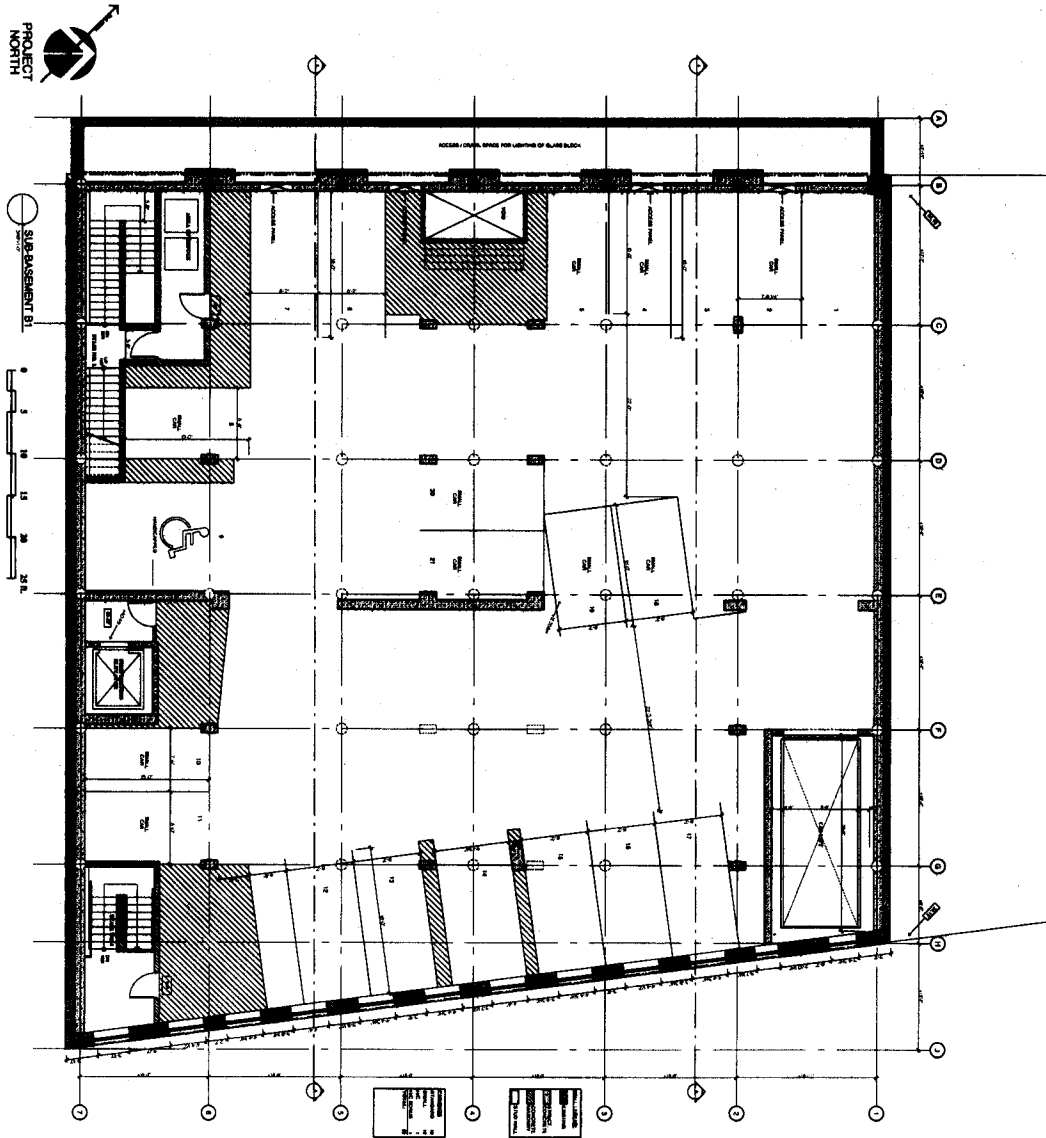
CRANE BUILDING

540 BEATTY STREET
VANCOUVER, B.C.

LOWER FLOOR
B2

A4

NO.	REVISION	DATE
1	ISSUED FOR PERMIT	2011.05.10
2	REVISED FOR COMMENTS	2011.05.10
3	REVISED FOR COMMENTS	2011.05.10
4	REVISED FOR COMMENTS	2011.05.10
5	REVISED FOR COMMENTS	2011.05.10
6	REVISED FOR COMMENTS	2011.05.10
7	REVISED FOR COMMENTS	2011.05.10
8	REVISED FOR COMMENTS	2011.05.10
9	REVISED FOR COMMENTS	2011.05.10
10	REVISED FOR COMMENTS	2011.05.10
11	REVISED FOR COMMENTS	2011.05.10
12	REVISED FOR COMMENTS	2011.05.10
13	REVISED FOR COMMENTS	2011.05.10
14	REVISED FOR COMMENTS	2011.05.10
15	REVISED FOR COMMENTS	2011.05.10
16	REVISED FOR COMMENTS	2011.05.10
17	REVISED FOR COMMENTS	2011.05.10
18	REVISED FOR COMMENTS	2011.05.10
19	REVISED FOR COMMENTS	2011.05.10
20	REVISED FOR COMMENTS	2011.05.10
21	REVISED FOR COMMENTS	2011.05.10
22	REVISED FOR COMMENTS	2011.05.10
23	REVISED FOR COMMENTS	2011.05.10
24	REVISED FOR COMMENTS	2011.05.10
25	REVISED FOR COMMENTS	2011.05.10
26	REVISED FOR COMMENTS	2011.05.10
27	REVISED FOR COMMENTS	2011.05.10
28	REVISED FOR COMMENTS	2011.05.10
29	REVISED FOR COMMENTS	2011.05.10
30	REVISED FOR COMMENTS	2011.05.10
31	REVISED FOR COMMENTS	2011.05.10
32	REVISED FOR COMMENTS	2011.05.10
33	REVISED FOR COMMENTS	2011.05.10
34	REVISED FOR COMMENTS	2011.05.10
35	REVISED FOR COMMENTS	2011.05.10
36	REVISED FOR COMMENTS	2011.05.10
37	REVISED FOR COMMENTS	2011.05.10
38	REVISED FOR COMMENTS	2011.05.10
39	REVISED FOR COMMENTS	2011.05.10
40	REVISED FOR COMMENTS	2011.05.10
41	REVISED FOR COMMENTS	2011.05.10
42	REVISED FOR COMMENTS	2011.05.10
43	REVISED FOR COMMENTS	2011.05.10
44	REVISED FOR COMMENTS	2011.05.10
45	REVISED FOR COMMENTS	2011.05.10
46	REVISED FOR COMMENTS	2011.05.10
47	REVISED FOR COMMENTS	2011.05.10
48	REVISED FOR COMMENTS	2011.05.10
49	REVISED FOR COMMENTS	2011.05.10
50	REVISED FOR COMMENTS	2011.05.10
51	REVISED FOR COMMENTS	2011.05.10
52	REVISED FOR COMMENTS	2011.05.10
53	REVISED FOR COMMENTS	2011.05.10
54	REVISED FOR COMMENTS	2011.05.10
55	REVISED FOR COMMENTS	2011.05.10
56	REVISED FOR COMMENTS	2011.05.10
57	REVISED FOR COMMENTS	2011.05.10
58	REVISED FOR COMMENTS	2011.05.10
59	REVISED FOR COMMENTS	2011.05.10
60	REVISED FOR COMMENTS	2011.05.10
61	REVISED FOR COMMENTS	2011.05.10
62	REVISED FOR COMMENTS	2011.05.10
63	REVISED FOR COMMENTS	2011.05.10
64	REVISED FOR COMMENTS	2011.05.10
65	REVISED FOR COMMENTS	2011.05.10
66	REVISED FOR COMMENTS	2011.05.10
67	REVISED FOR COMMENTS	2011.05.10
68	REVISED FOR COMMENTS	2011.05.10
69	REVISED FOR COMMENTS	2011.05.10
70	REVISED FOR COMMENTS	2011.05.10
71	REVISED FOR COMMENTS	2011.05.10
72	REVISED FOR COMMENTS	2011.05.10
73	REVISED FOR COMMENTS	2011.05.10
74	REVISED FOR COMMENTS	2011.05.10
75	REVISED FOR COMMENTS	2011.05.10
76	REVISED FOR COMMENTS	2011.05.10
77	REVISED FOR COMMENTS	2011.05.10
78	REVISED FOR COMMENTS	2011.05.10
79	REVISED FOR COMMENTS	2011.05.10
80	REVISED FOR COMMENTS	2011.05.10
81	REVISED FOR COMMENTS	2011.05.10
82	REVISED FOR COMMENTS	2011.05.10
83	REVISED FOR COMMENTS	2011.05.10
84	REVISED FOR COMMENTS	2011.05.10
85	REVISED FOR COMMENTS	2011.05.10
86	REVISED FOR COMMENTS	2011.05.10
87	REVISED FOR COMMENTS	2011.05.10
88	REVISED FOR COMMENTS	2011.05.10
89	REVISED FOR COMMENTS	2011.05.10
90	REVISED FOR COMMENTS	2011.05.10
91	REVISED FOR COMMENTS	2011.05.10
92	REVISED FOR COMMENTS	2011.05.10
93	REVISED FOR COMMENTS	2011.05.10
94	REVISED FOR COMMENTS	2011.05.10
95	REVISED FOR COMMENTS	2011.05.10
96	REVISED FOR COMMENTS	2011.05.10
97	REVISED FOR COMMENTS	2011.05.10
98	REVISED FOR COMMENTS	2011.05.10
99	REVISED FOR COMMENTS	2011.05.10
100	REVISED FOR COMMENTS	2011.05.10

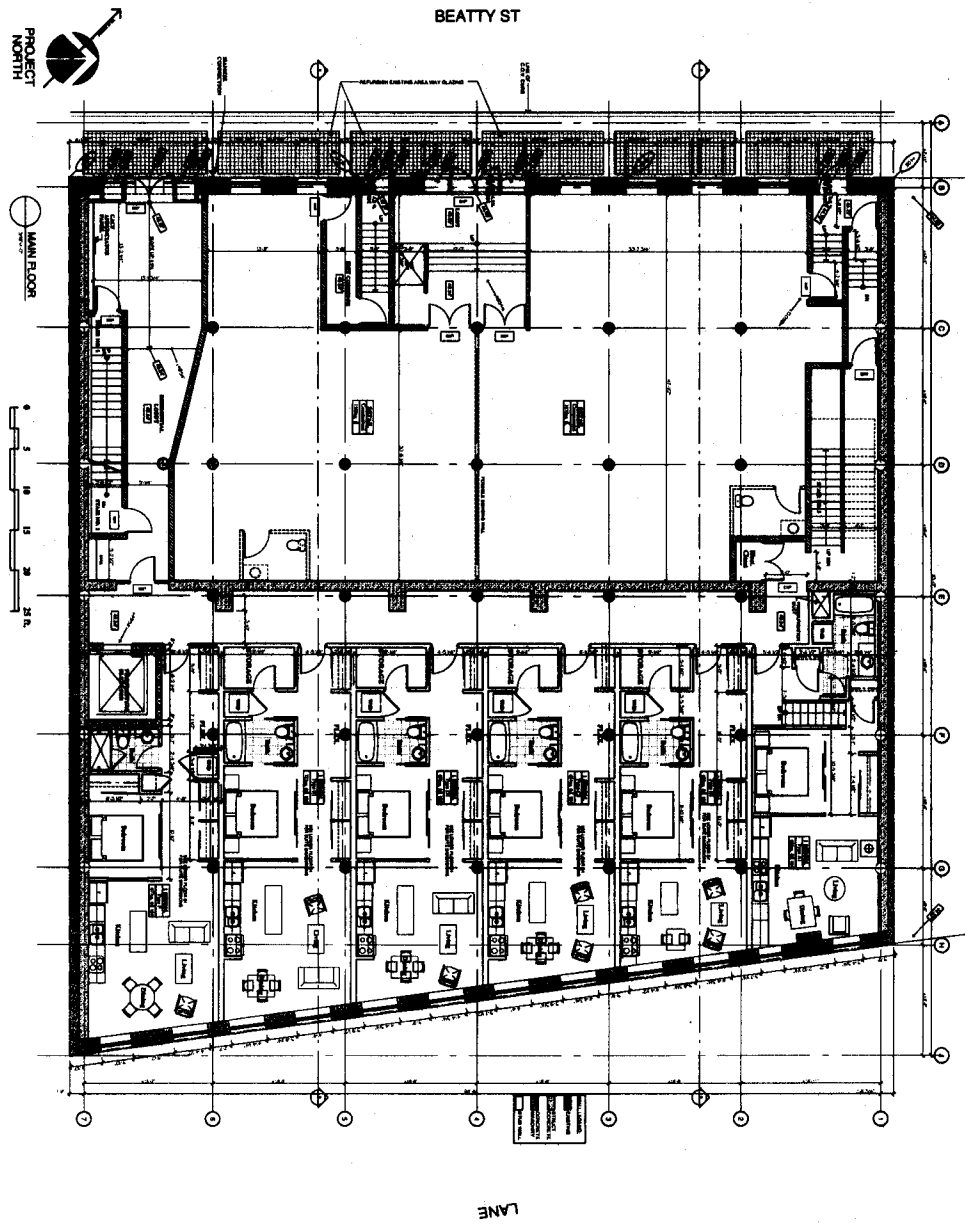


NO.	DATE	BY	CHKD.
1	2008	AS	
2			
3			
4			
5			
6			
7			
8			
9			
10			
11			
12			
13			
14			
15			
16			
17			
18			
19			
20			
21			
22			
23			
24			
25			
26			
27			
28			
29			
30			
31			
32			
33			
34			
35			
36			
37			
38			
39			
40			
41			
42			
43			
44			
45			
46			
47			
48			
49			
50			
51			
52			
53			
54			
55			
56			
57			
58			
59			
60			
61			
62			
63			
64			
65			
66			
67			
68			
69			
70			
71			
72			
73			
74			
75			
76			
77			
78			
79			
80			
81			
82			
83			
84			
85			
86			
87			
88			
89			
90			
91			
92			
93			
94			
95			
96			
97			
98			
99			
100			

CRANE BUILDING
 540 BEATTY STREET
 VANCOUVER, B.C.

LOWER FLOOR
 B1

AS

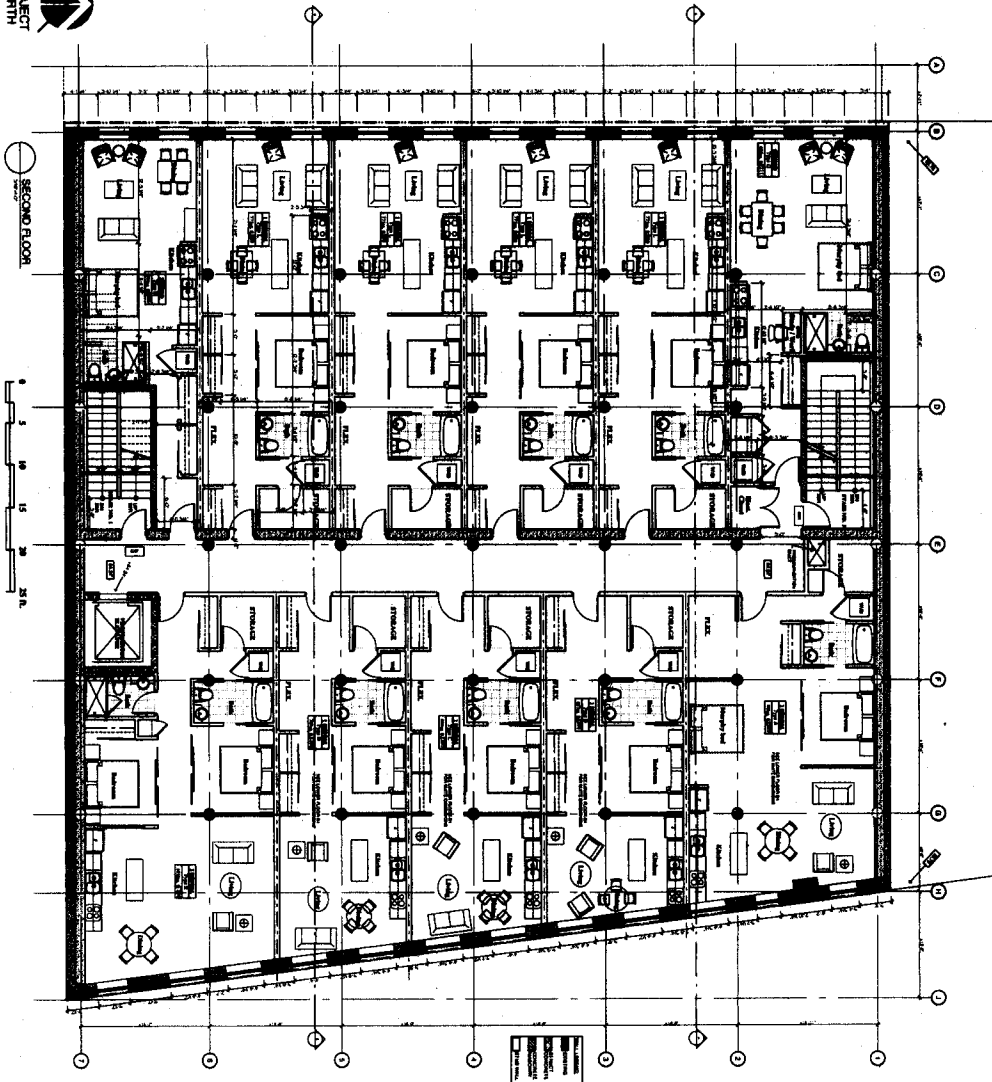


	PROJECT NO. 1000 SHEET NO. A6
	DATE: 10/1/00 SCALE: AS SHOWN
1. DATE OF EXAMINATION: 10/1/00 2. PROJECT NO.: 1000 3. SHEET NO.: A6 4. DATE OF ISSUE: 10/1/00	5. PROJECT NAME: CRANE BUILDING 6. PROJECT ADDRESS: 540 BEATTY STREET, VANCOUVER, B.C.

CRANE BUILDING
 540 BEATTY STREET
 VANCOUVER, B.C.

MAIN FLOOR

A6

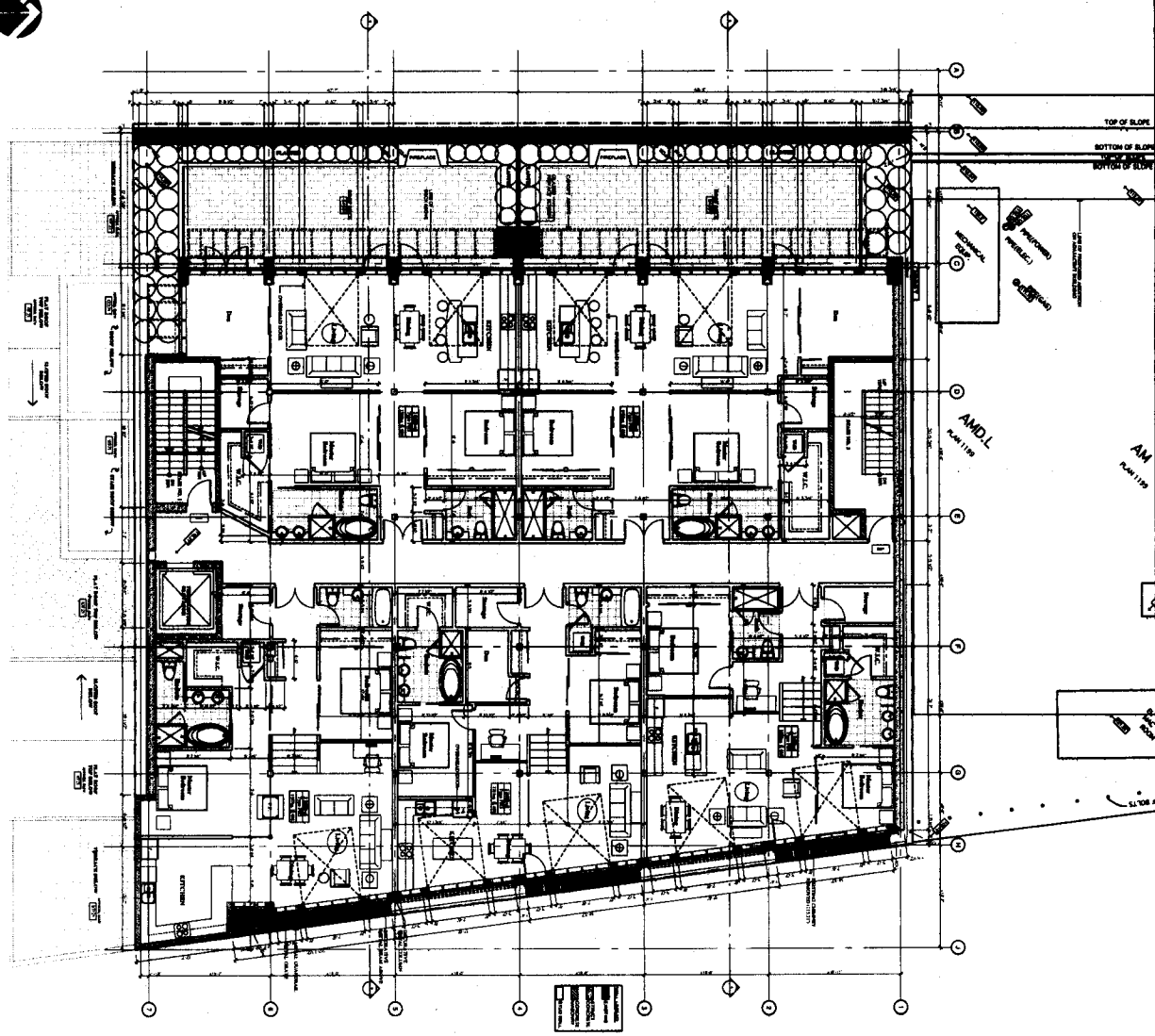
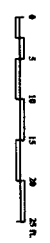


SECOND FLOOR	
DATE	1998.08.12
SCALE	1/4" = 1'-0"
PROJECT	CRANE BUILDING
NO.	A7

CRANE BUILDING
 540 BEATTY STREET
 VANCOUVER, B.C.

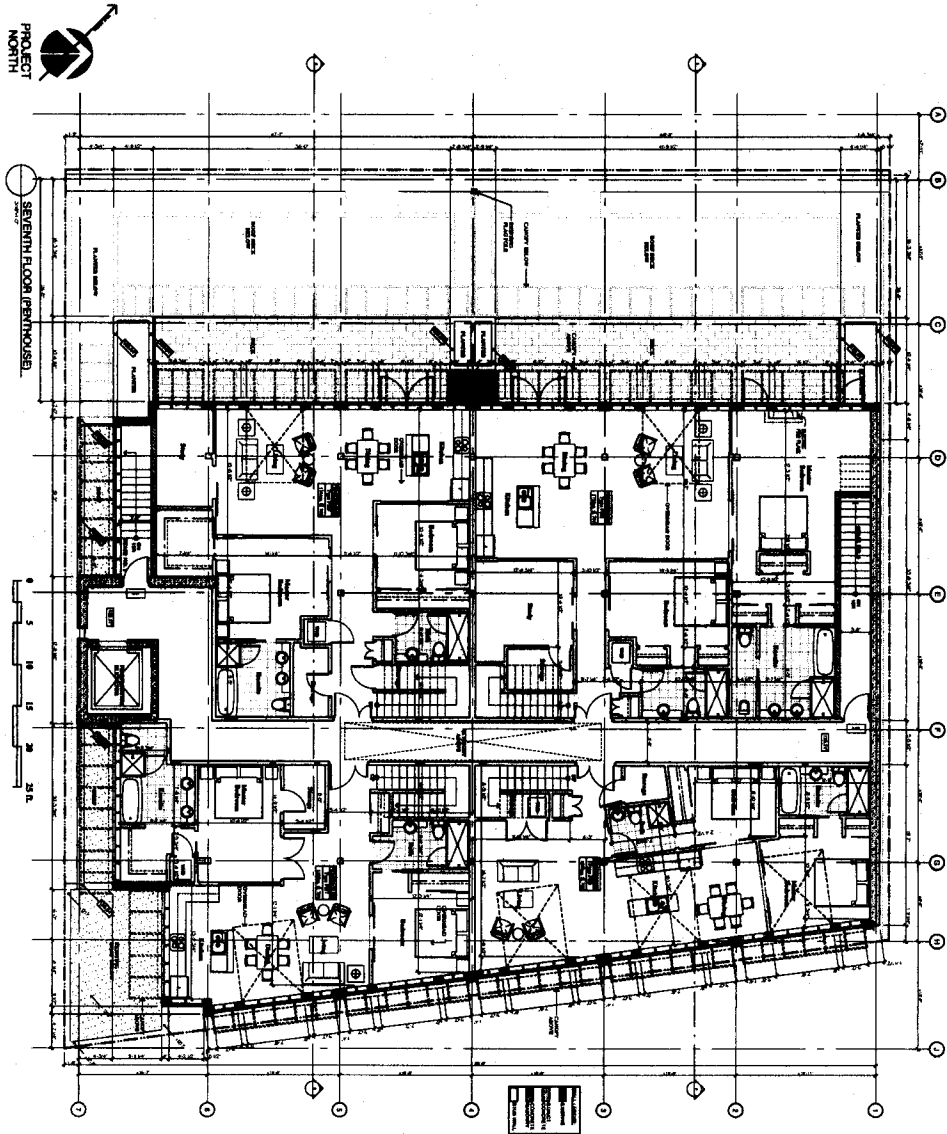


SIXTH FLOOR



SIXTH FLOOR	
A11	
NO.	DESCRIPTION
1	DATE OF REVISION
2	BY
3	DATE
4	REVISION
5	BY
6	DATE
7	REVISION
8	BY
9	DATE
10	REVISION
11	BY
12	DATE

CRANE BUILDING
 540 BEATTY STREET
 VANCOUVER, B.C.

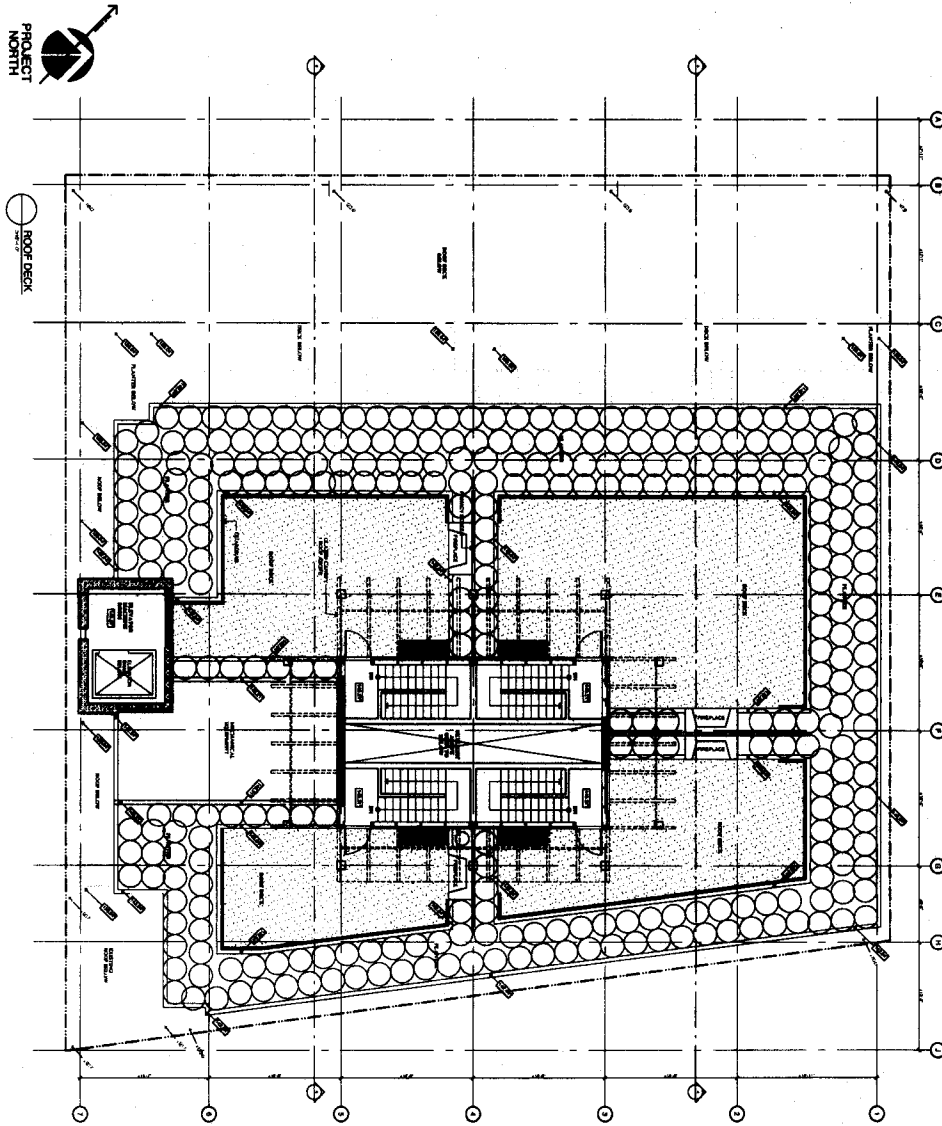


NO.	DATE	DESCRIPTION
1	1988	REVISED DRAWING
2	1988	REVISED DRAWING
3	1988	REVISED DRAWING
4	1988	REVISED DRAWING
5	1988	REVISED DRAWING
6	1988	REVISED DRAWING
7	1988	REVISED DRAWING
8	1988	REVISED DRAWING
9	1988	REVISED DRAWING
10	1988	REVISED DRAWING
11	1988	REVISED DRAWING
12	1988	REVISED DRAWING

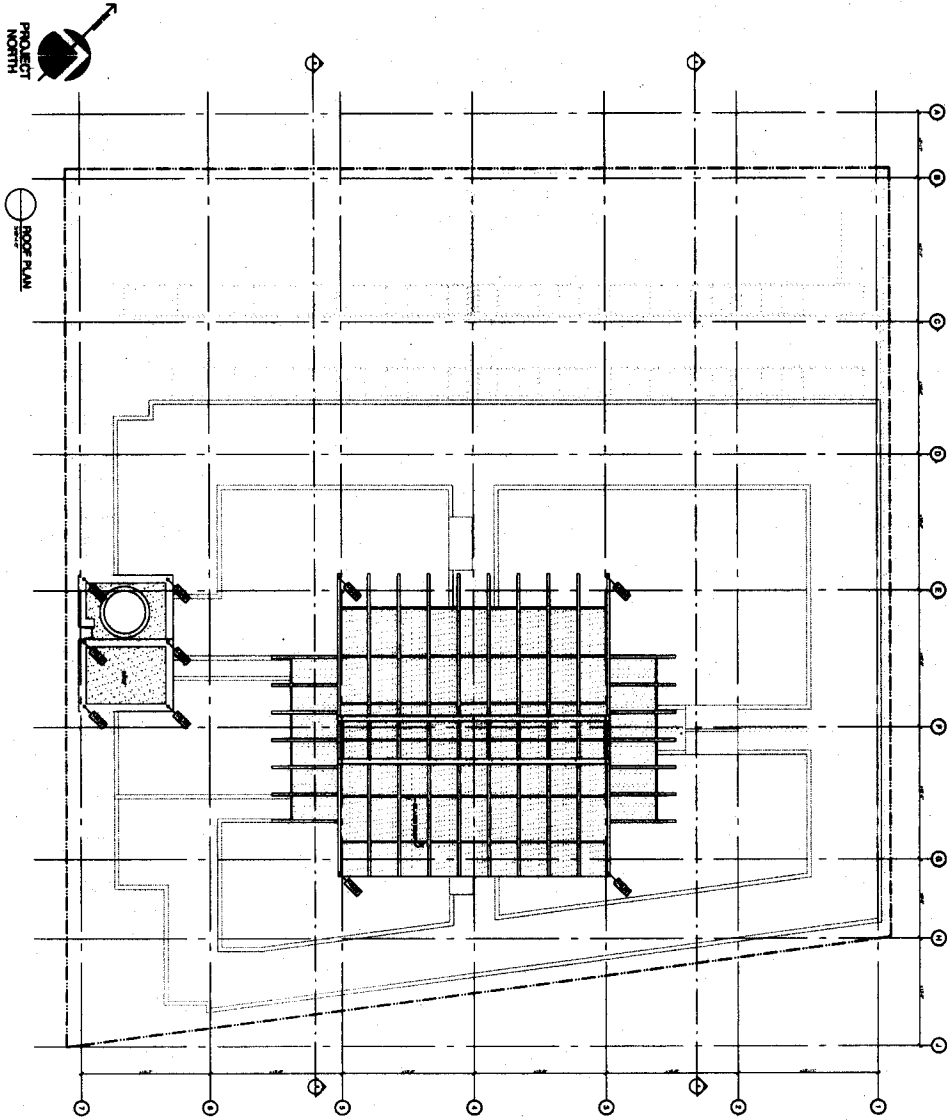
SEVENTH FLOOR

A12

CRANE BUILDING
540 BEATTY STREET
VANCOUVER, B.C.



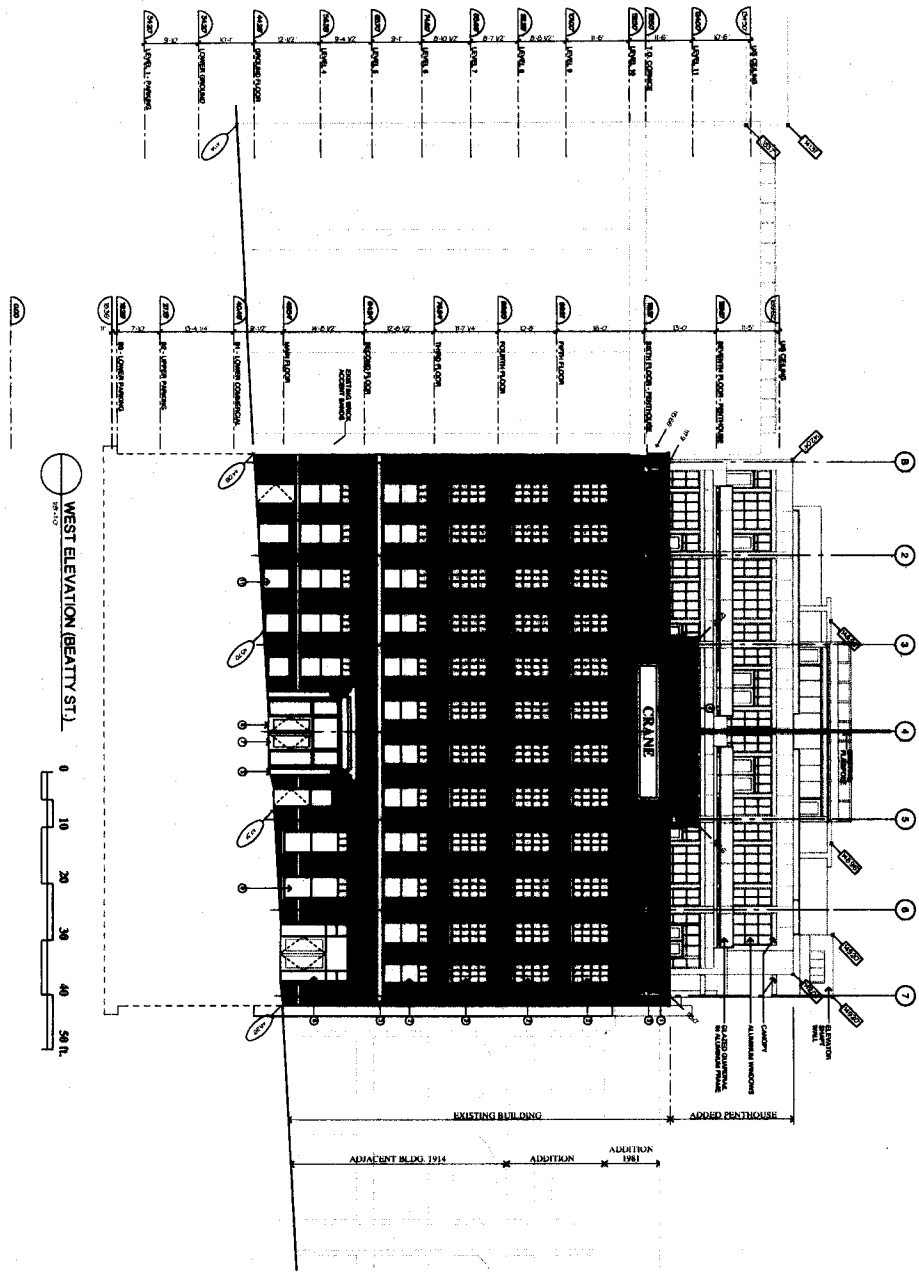
<p>PROJECT NORTH</p> <p>ROOF DECK</p>	<p>CRANE BUILDING</p> <p>540 BEATTY STREET</p> <p>VANCOUVER, B.C.</p>
---------------------------------------	---



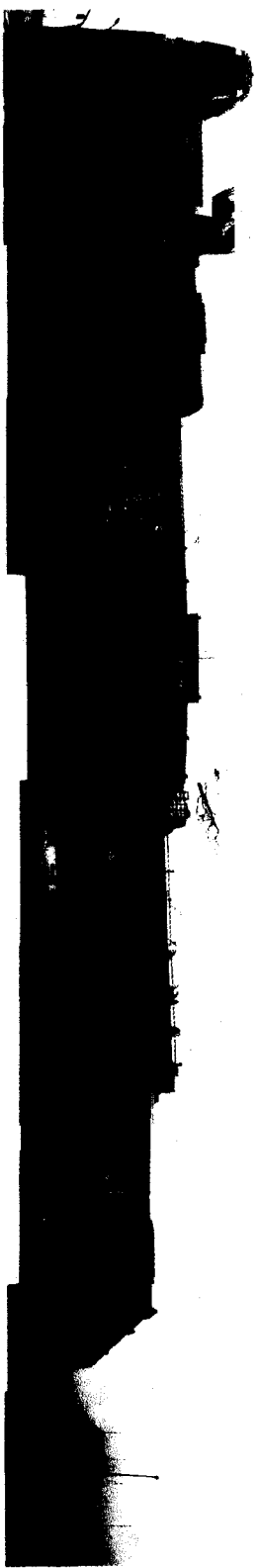
NO.	REV.	DATE	BY	CHKD.	DESCRIPTION
1					ISSUED FOR PERMIT
2					ISSUED FOR CONSTRUCTION
3					ISSUED FOR AS-BUILT
4					ISSUED FOR FINAL
5					ISSUED FOR ARCHIVE

138

CRANE BUILDING
540 BEATTY STREET
VANCOUVER, B.C.



- LEGEND:**
- 1. CRANE BUILDING AND PENTHOUSE: EXISTING AND NEW CONSTRUCTION. EXISTING CONSTRUCTION TO BE IDENTIFIED BY DASHED LINES. NEW CONSTRUCTION TO BE IDENTIFIED BY SOLID LINES.
 - 2. CRANE BUILDING AND PENTHOUSE: EXISTING CONSTRUCTION TO BE IDENTIFIED BY DASHED LINES. NEW CONSTRUCTION TO BE IDENTIFIED BY SOLID LINES.
 - 3. CRANE BUILDING AND PENTHOUSE: EXISTING CONSTRUCTION TO BE IDENTIFIED BY DASHED LINES. NEW CONSTRUCTION TO BE IDENTIFIED BY SOLID LINES.
 - 4. CRANE BUILDING AND PENTHOUSE: EXISTING CONSTRUCTION TO BE IDENTIFIED BY DASHED LINES. NEW CONSTRUCTION TO BE IDENTIFIED BY SOLID LINES.
 - 5. CRANE BUILDING AND PENTHOUSE: EXISTING CONSTRUCTION TO BE IDENTIFIED BY DASHED LINES. NEW CONSTRUCTION TO BE IDENTIFIED BY SOLID LINES.
 - 6. CRANE BUILDING AND PENTHOUSE: EXISTING CONSTRUCTION TO BE IDENTIFIED BY DASHED LINES. NEW CONSTRUCTION TO BE IDENTIFIED BY SOLID LINES.
 - 7. CRANE BUILDING AND PENTHOUSE: EXISTING CONSTRUCTION TO BE IDENTIFIED BY DASHED LINES. NEW CONSTRUCTION TO BE IDENTIFIED BY SOLID LINES.
 - 8. CRANE BUILDING AND PENTHOUSE: EXISTING CONSTRUCTION TO BE IDENTIFIED BY DASHED LINES. NEW CONSTRUCTION TO BE IDENTIFIED BY SOLID LINES.
 - 9. CRANE BUILDING AND PENTHOUSE: EXISTING CONSTRUCTION TO BE IDENTIFIED BY DASHED LINES. NEW CONSTRUCTION TO BE IDENTIFIED BY SOLID LINES.
 - 10. CRANE BUILDING AND PENTHOUSE: EXISTING CONSTRUCTION TO BE IDENTIFIED BY DASHED LINES. NEW CONSTRUCTION TO BE IDENTIFIED BY SOLID LINES.
 - 11. CRANE BUILDING AND PENTHOUSE: EXISTING CONSTRUCTION TO BE IDENTIFIED BY DASHED LINES. NEW CONSTRUCTION TO BE IDENTIFIED BY SOLID LINES.
 - 12. CRANE BUILDING AND PENTHOUSE: EXISTING CONSTRUCTION TO BE IDENTIFIED BY DASHED LINES. NEW CONSTRUCTION TO BE IDENTIFIED BY SOLID LINES.
 - 13. CRANE BUILDING AND PENTHOUSE: EXISTING CONSTRUCTION TO BE IDENTIFIED BY DASHED LINES. NEW CONSTRUCTION TO BE IDENTIFIED BY SOLID LINES.
 - 14. CRANE BUILDING AND PENTHOUSE: EXISTING CONSTRUCTION TO BE IDENTIFIED BY DASHED LINES. NEW CONSTRUCTION TO BE IDENTIFIED BY SOLID LINES.
 - 15. CRANE BUILDING AND PENTHOUSE: EXISTING CONSTRUCTION TO BE IDENTIFIED BY DASHED LINES. NEW CONSTRUCTION TO BE IDENTIFIED BY SOLID LINES.
 - 16. CRANE BUILDING AND PENTHOUSE: EXISTING CONSTRUCTION TO BE IDENTIFIED BY DASHED LINES. NEW CONSTRUCTION TO BE IDENTIFIED BY SOLID LINES.
 - 17. CRANE BUILDING AND PENTHOUSE: EXISTING CONSTRUCTION TO BE IDENTIFIED BY DASHED LINES. NEW CONSTRUCTION TO BE IDENTIFIED BY SOLID LINES.
 - 18. CRANE BUILDING AND PENTHOUSE: EXISTING CONSTRUCTION TO BE IDENTIFIED BY DASHED LINES. NEW CONSTRUCTION TO BE IDENTIFIED BY SOLID LINES.
 - 19. CRANE BUILDING AND PENTHOUSE: EXISTING CONSTRUCTION TO BE IDENTIFIED BY DASHED LINES. NEW CONSTRUCTION TO BE IDENTIFIED BY SOLID LINES.
 - 20. CRANE BUILDING AND PENTHOUSE: EXISTING CONSTRUCTION TO BE IDENTIFIED BY DASHED LINES. NEW CONSTRUCTION TO BE IDENTIFIED BY SOLID LINES.



CRANE BUILDING
 540 BEATTY STREET
 VANCOUVER, B.C.

DATE	DESCRIPTION	BY	CHK
10/10/10	10% DEVELOPMENT PERMIT
11/10/10	20% DEVELOPMENT PERMIT
12/10/10	30% DEVELOPMENT PERMIT
01/11/11	40% DEVELOPMENT PERMIT
02/11/11	50% DEVELOPMENT PERMIT
03/11/11	60% DEVELOPMENT PERMIT
04/11/11	70% DEVELOPMENT PERMIT
05/11/11	80% DEVELOPMENT PERMIT
06/11/11	90% DEVELOPMENT PERMIT
07/11/11	100% DEVELOPMENT PERMIT

BEATTY ST. ELEVATION STREETSCAPE
 A14

