

--- ZONING BOUNDARY



Site: 5464 Ormidale Street DE 408821

Date: 2004 December 20

City of Vancouver Planning Department

Drawn: TM

Scale: 1:2000



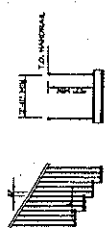
NO.	DATE	DESCRIPTION

EMERY INDUSTRIAL, S. 4211	
N.	1/4/17
D.	8/17
W.	10/17
DATE	2017
ALAN & SUE R. R. 1914	

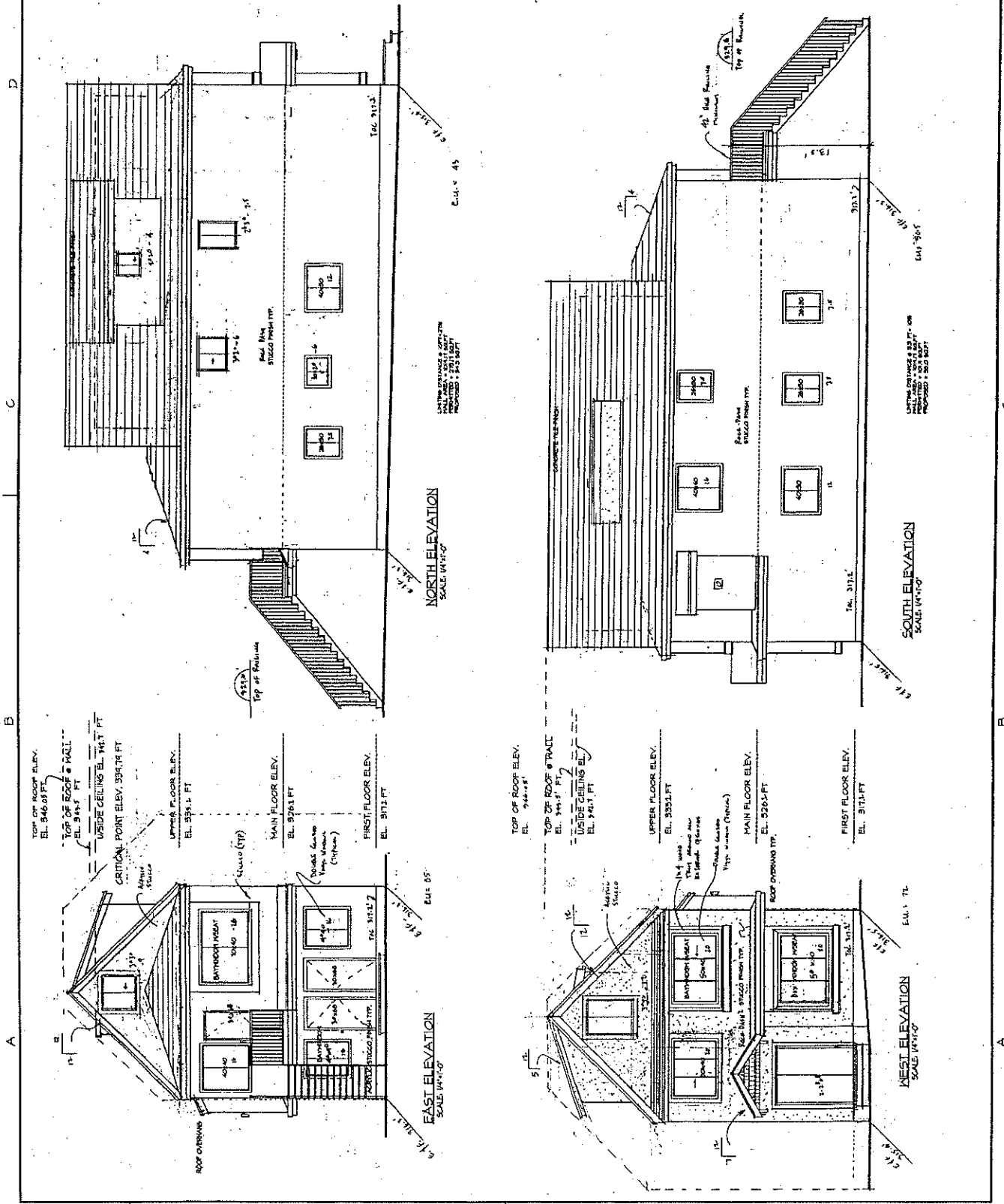
  

VANCOUVER	CANADA
SINGLE FAMILY DWELLING	
3464 ORCHIDALE STREET	

ALL JOIST SPACING SHALL BE 16" O.C. UNLESS OTHERWISE NOTED.  
 ALL OPENING FRAMES TO BE LESS THAN 4" TO SURFACE BELOW TOP OF RAILING.  
 ALL OPENING FRAMES TO BE LESS THAN 4" TO SURFACE ABOVE TOP OF RAILING.  
 ALL OPENINGS TO BE LESS THAN 4" TO TOP OF TREADS AND SPINDLES TO BE RIGIDLY FASTENED TO TREADS AND SPINDLES.  
 USE METAL BRACKETS IF REQUIRED.



INTERIOR STAIR DETAIL  
 SCALE 1/4"=1'-0"



NO.	DATE	DESCRIPTION