

REFERENCE PLAN TO ACCOMPANY RESOLUTION OF THE COUNCIL OF CITY OF VANCOUVER ESTABLISHING FOR HIGHWAY PURPOSES A PORTION OF LOT 7, EXCEPT THE WEST 7 FEET, NOW ROAD, OF LOT D, BLOCK 155, DISTRICT LOT 264A, PLANS 1351 AND 1771, GROUP ONE, NEW WESTMINSTER DISTRICT.

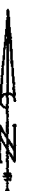
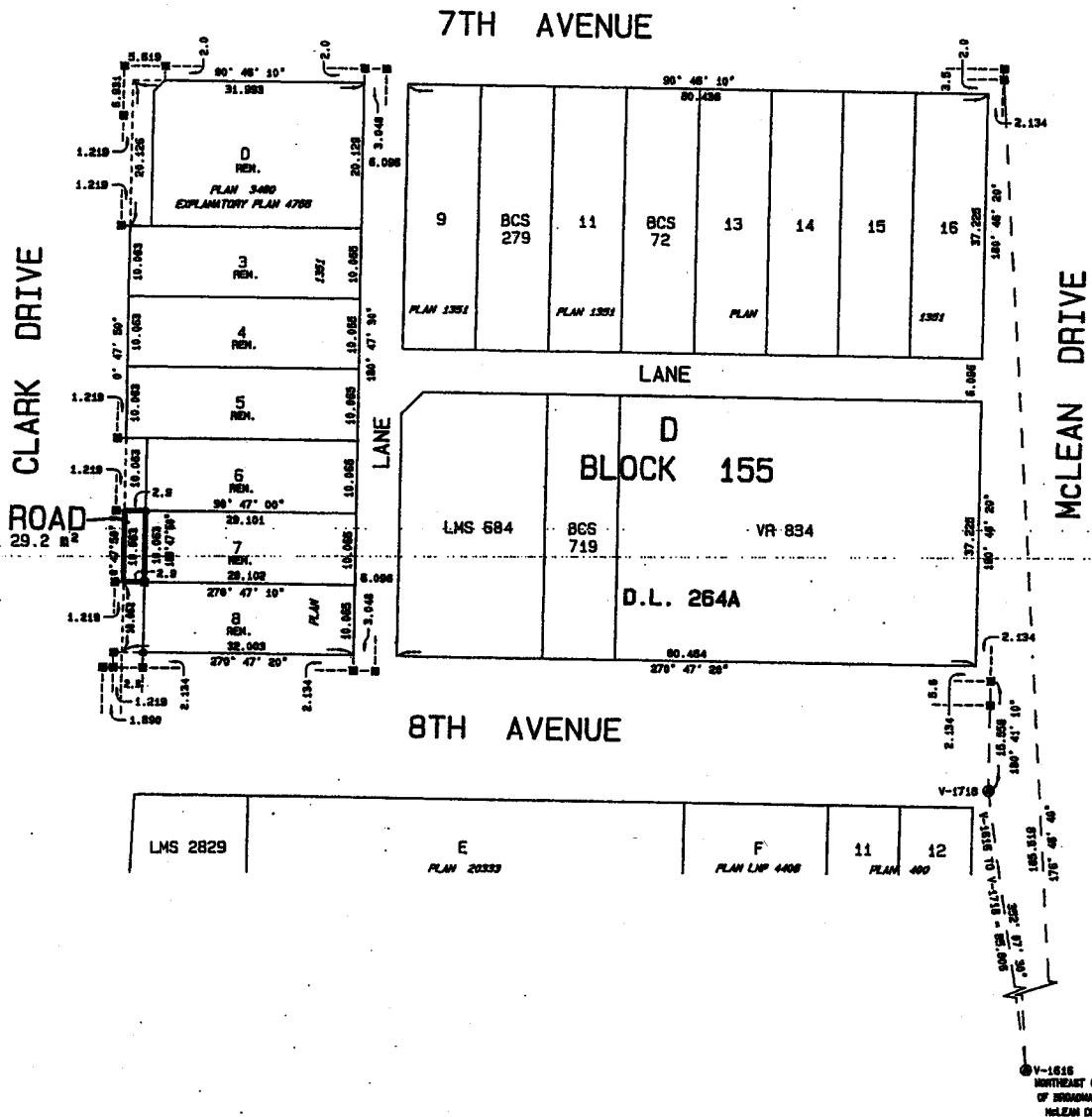
PLAN BCP

DEPOSITED IN THE LAND TITLE OFFICE AT NEW WESTMINSTER, BRITISH COLUMBIA, THIS _____ DAY OF _____, 2005.

REGISTRAR.

REFERENCE NO.

PURSUANT TO SECTION 99(4) (f), LAND TITLE ACT
B.C.S.S. 929.025



| | | |
|---------|-----|---------------|
| VR 2740 | | |
| 42 | 13 | REN. |
| | 14 | REN. |
| PLW | 15 | REN. |
| | BCS | 838 |
| J | | PLAN LMP 4892 |

LEGEND:

THIS PLAN SHOWS HORIZONTAL GROUND-LEVEL DISTANCES EXCEPT WHERE OTHERWISE NOTED. TO COMPUTE GRID DISTANCES, MULTIPLY GROUND-LEVEL DISTANCES BY CORRECTION FACTOR 0.99999806. GRID BEARINGS ARE DERIVED FROM OBSERVATIONS BETWEEN GEODETIC CONTROL MONUMENTS Y-1618 AND Y-1718. INTEGRATED SURVEY AREA No. 31. CITY OF VANCOUVER, MADES (CSRS).

- ⊙ INDICATES CONTROL MONUMENT FOUND
- INDICATES LEAD PLUS FOUND
- INDICATES STANDARD IRON POST FOUND

I, FRED L. MORG, A BRITISH COLUMBIA LAND SURVEYOR, OF THE CITY OF VANCOUVER, IN BRITISH COLUMBIA, CERTIFY THAT I WAS PRESENT AT AND PERSONALLY SUPERINTENDED THE SURVEY REPRESENTED BY THIS PLAN, AND THAT THE SURVEY AND PLAN ARE CORRECT. THE FIELD SURVEY WAS COMPLETED ON THE 17th DAY OF DECEMBER, 2004. THE PLAN WAS COMPLETED AND CHECKED, AND THE CHECKLIST FILED UNDER No. 25771, ON THE 22nd DAY OF DECEMBER, 2004.

Fred Morg

B. C. L. S.