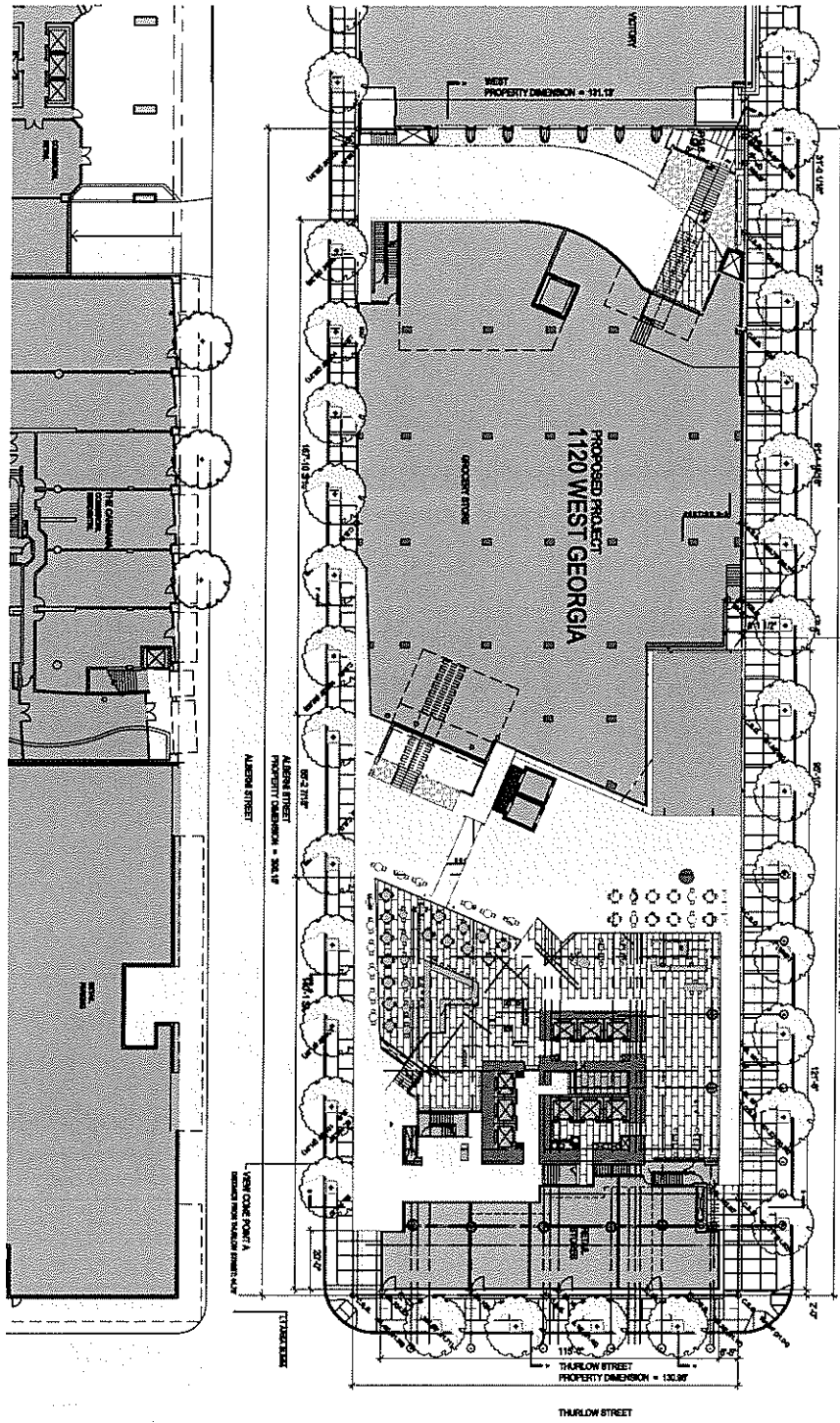


--- ZONING BOUNDARY

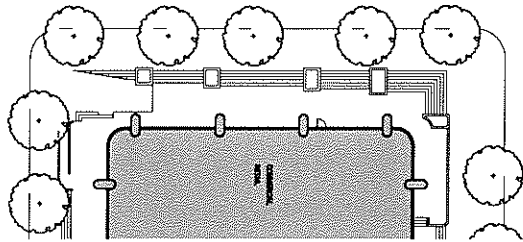
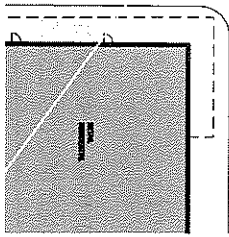
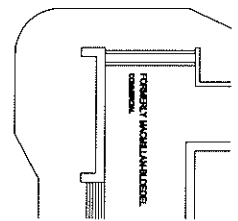
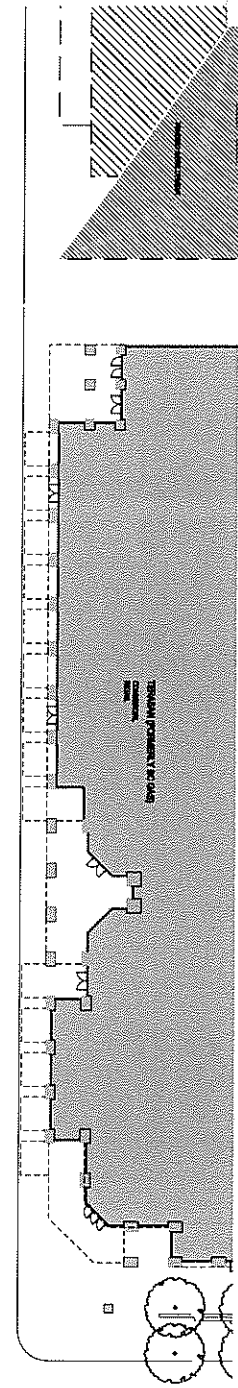
Site: 1120 W Georgia Street DE 408377
City of Vancouver Planning Department

Date: 2004 December 23
Drawn: TM
Scale: 1:2000





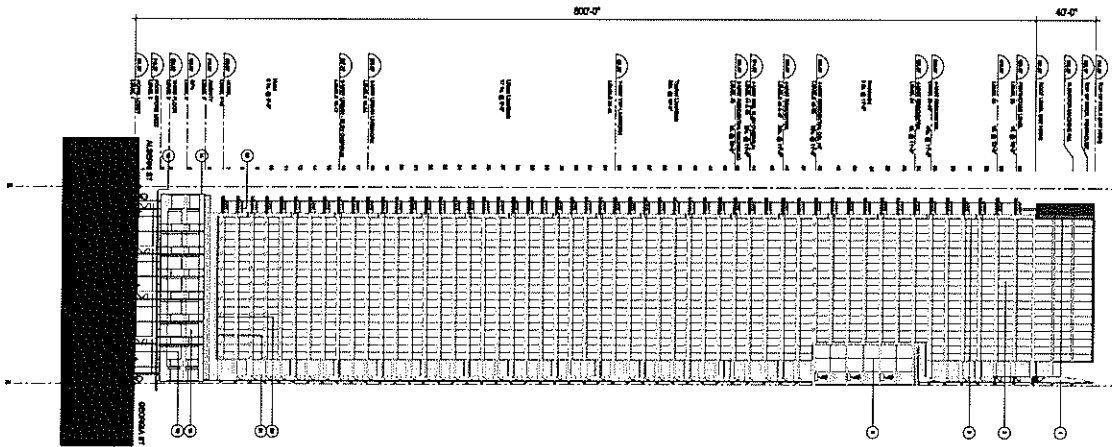
LEGAL DESCRIPTION
LOT 5, PLAN LAMBERT AND
LOT 6, PLAN LAMBERT AND
BLOCK 16, D.L. 188



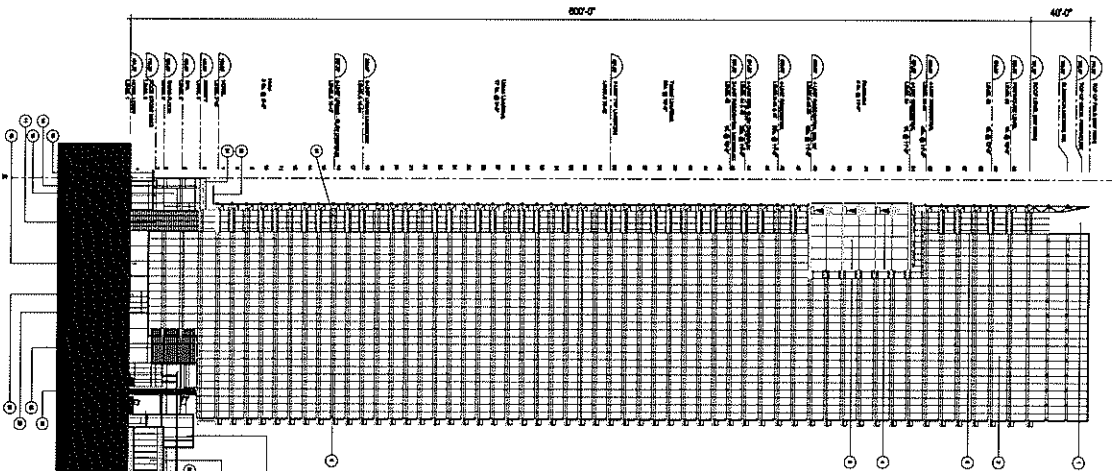
JAYEY DESIGN ARCHITECTS INC.
1120 WEST GEORGIA
VANCOUVER, B.C.

1120 WEST GEORGIA
VANCOUVER, B.C.
SITE PLAN

DATE: 11/17/17
DRAWN BY: [Name]
CHECKED BY: [Name]
SCALE: AS SHOWN
PROJECT NO.: 27-2401-04
A2.2



1 EAST ELEVATION (THURLOW ST)

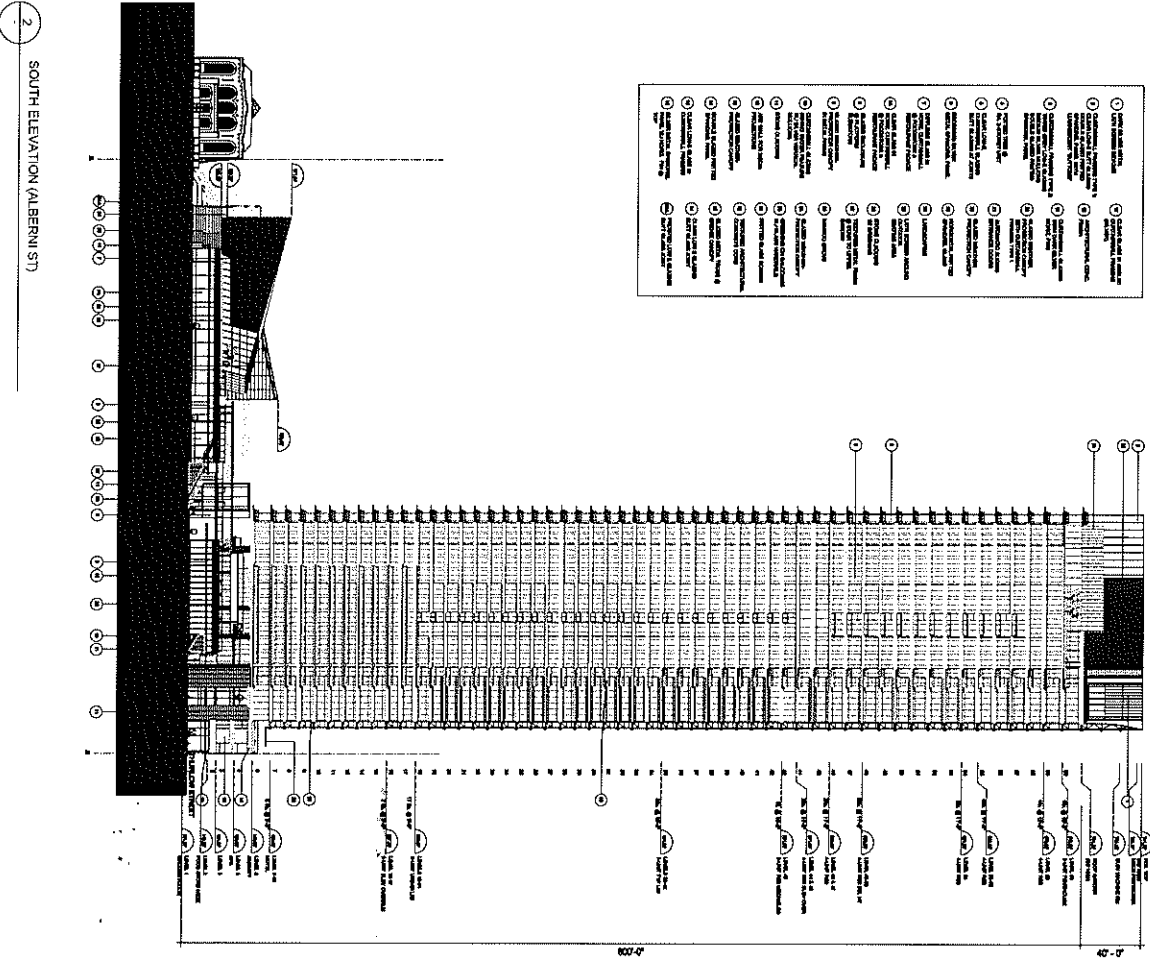
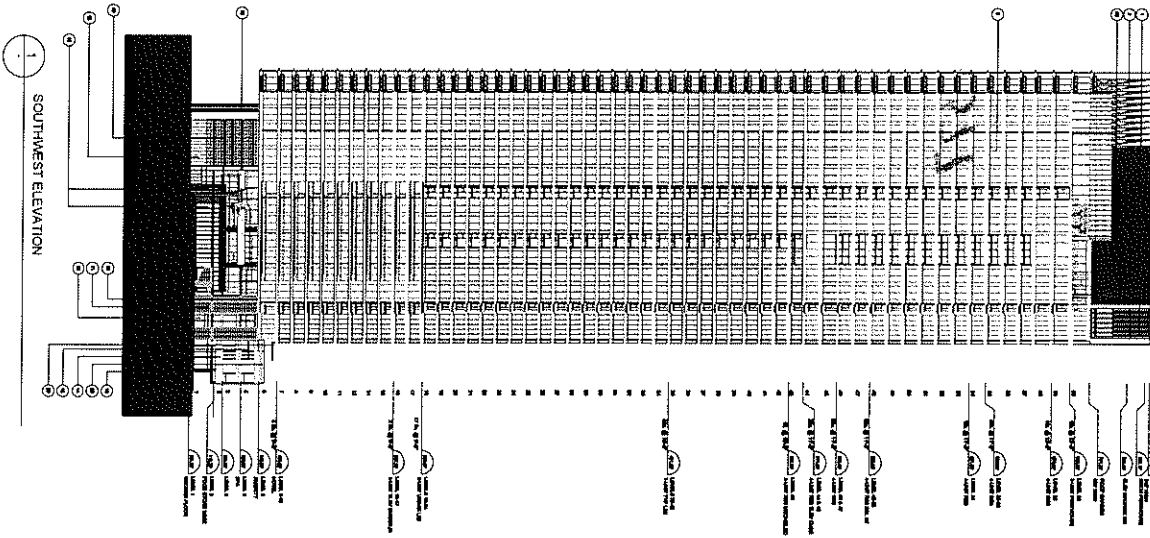


2 NORTH ELEVATION

- | | |
|-----------------|-----------------|
| 1. 100% FINISH | 21. 100% FINISH |
| 2. 100% FINISH | 22. 100% FINISH |
| 3. 100% FINISH | 23. 100% FINISH |
| 4. 100% FINISH | 24. 100% FINISH |
| 5. 100% FINISH | 25. 100% FINISH |
| 6. 100% FINISH | 26. 100% FINISH |
| 7. 100% FINISH | 27. 100% FINISH |
| 8. 100% FINISH | 28. 100% FINISH |
| 9. 100% FINISH | 29. 100% FINISH |
| 10. 100% FINISH | 30. 100% FINISH |
| 11. 100% FINISH | 31. 100% FINISH |
| 12. 100% FINISH | 32. 100% FINISH |
| 13. 100% FINISH | 33. 100% FINISH |
| 14. 100% FINISH | 34. 100% FINISH |
| 15. 100% FINISH | 35. 100% FINISH |
| 16. 100% FINISH | 36. 100% FINISH |
| 17. 100% FINISH | 37. 100% FINISH |
| 18. 100% FINISH | 38. 100% FINISH |
| 19. 100% FINISH | 39. 100% FINISH |
| 20. 100% FINISH | 40. 100% FINISH |

JUNIORBANK ARCHITECTS INC.
 1150 WEST GEORGIA
 VANCOUVER, BC
 604-681-1111
 www.juniorbank.com

152" x 112"
A6.1
 NORTH (GEORGIA ST) ELEVATION
 EAST (THURLOW ST) ELEVATION
 27 AUGUST 2014



- 1. EXTERIOR WALL FINISH
- 2. EXTERIOR WALL FINISH
- 3. EXTERIOR WALL FINISH
- 4. EXTERIOR WALL FINISH
- 5. EXTERIOR WALL FINISH
- 6. EXTERIOR WALL FINISH
- 7. EXTERIOR WALL FINISH
- 8. EXTERIOR WALL FINISH
- 9. EXTERIOR WALL FINISH
- 10. EXTERIOR WALL FINISH
- 11. EXTERIOR WALL FINISH
- 12. EXTERIOR WALL FINISH
- 13. EXTERIOR WALL FINISH
- 14. EXTERIOR WALL FINISH
- 15. EXTERIOR WALL FINISH
- 16. EXTERIOR WALL FINISH
- 17. EXTERIOR WALL FINISH
- 18. EXTERIOR WALL FINISH
- 19. EXTERIOR WALL FINISH
- 20. EXTERIOR WALL FINISH
- 21. EXTERIOR WALL FINISH
- 22. EXTERIOR WALL FINISH
- 23. EXTERIOR WALL FINISH
- 24. EXTERIOR WALL FINISH
- 25. EXTERIOR WALL FINISH
- 26. EXTERIOR WALL FINISH
- 27. EXTERIOR WALL FINISH
- 28. EXTERIOR WALL FINISH
- 29. EXTERIOR WALL FINISH
- 30. EXTERIOR WALL FINISH
- 31. EXTERIOR WALL FINISH
- 32. EXTERIOR WALL FINISH
- 33. EXTERIOR WALL FINISH
- 34. EXTERIOR WALL FINISH
- 35. EXTERIOR WALL FINISH
- 36. EXTERIOR WALL FINISH
- 37. EXTERIOR WALL FINISH
- 38. EXTERIOR WALL FINISH
- 39. EXTERIOR WALL FINISH
- 40. EXTERIOR WALL FINISH
- 41. EXTERIOR WALL FINISH
- 42. EXTERIOR WALL FINISH
- 43. EXTERIOR WALL FINISH
- 44. EXTERIOR WALL FINISH
- 45. EXTERIOR WALL FINISH
- 46. EXTERIOR WALL FINISH
- 47. EXTERIOR WALL FINISH
- 48. EXTERIOR WALL FINISH
- 49. EXTERIOR WALL FINISH
- 50. EXTERIOR WALL FINISH

1130 WEST GEORGIA
 VANCOUVER, BC
 SOUTH (ALBERNI ST) ELEVAD
 A6.2
 02.808
 27/06/2018

JENSEN HOKING ARCHITECTS INC.
 1130 WEST GEORGIA
 VANCOUVER, BC

40-000
 40-000