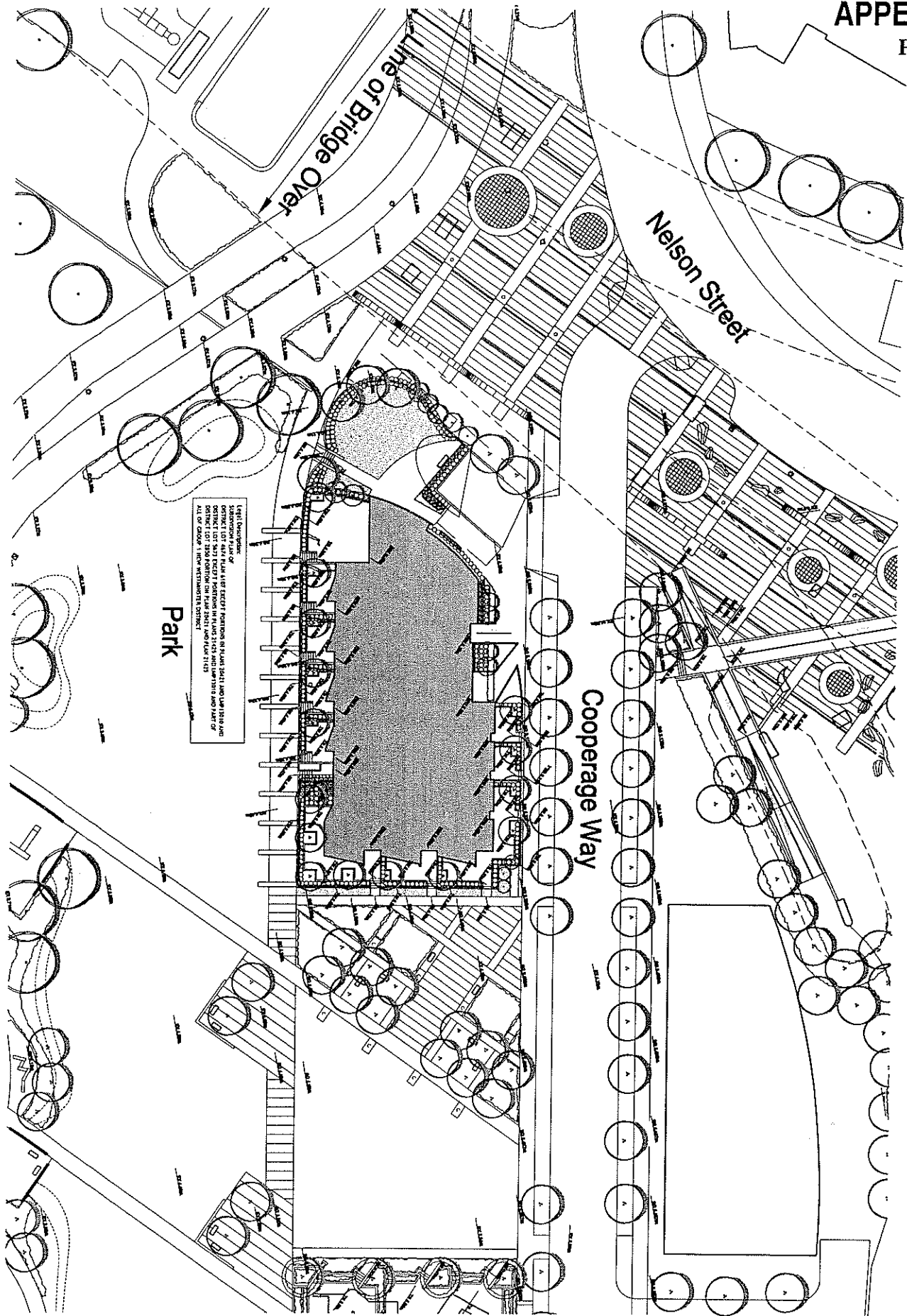


--- ZONING BOUNDARY



Site: 980 Cooperage Way DE 408503  
City of Vancouver Planning Department

Date: 2004 November 24  
Drawn: TM  
Scale: 1:2000



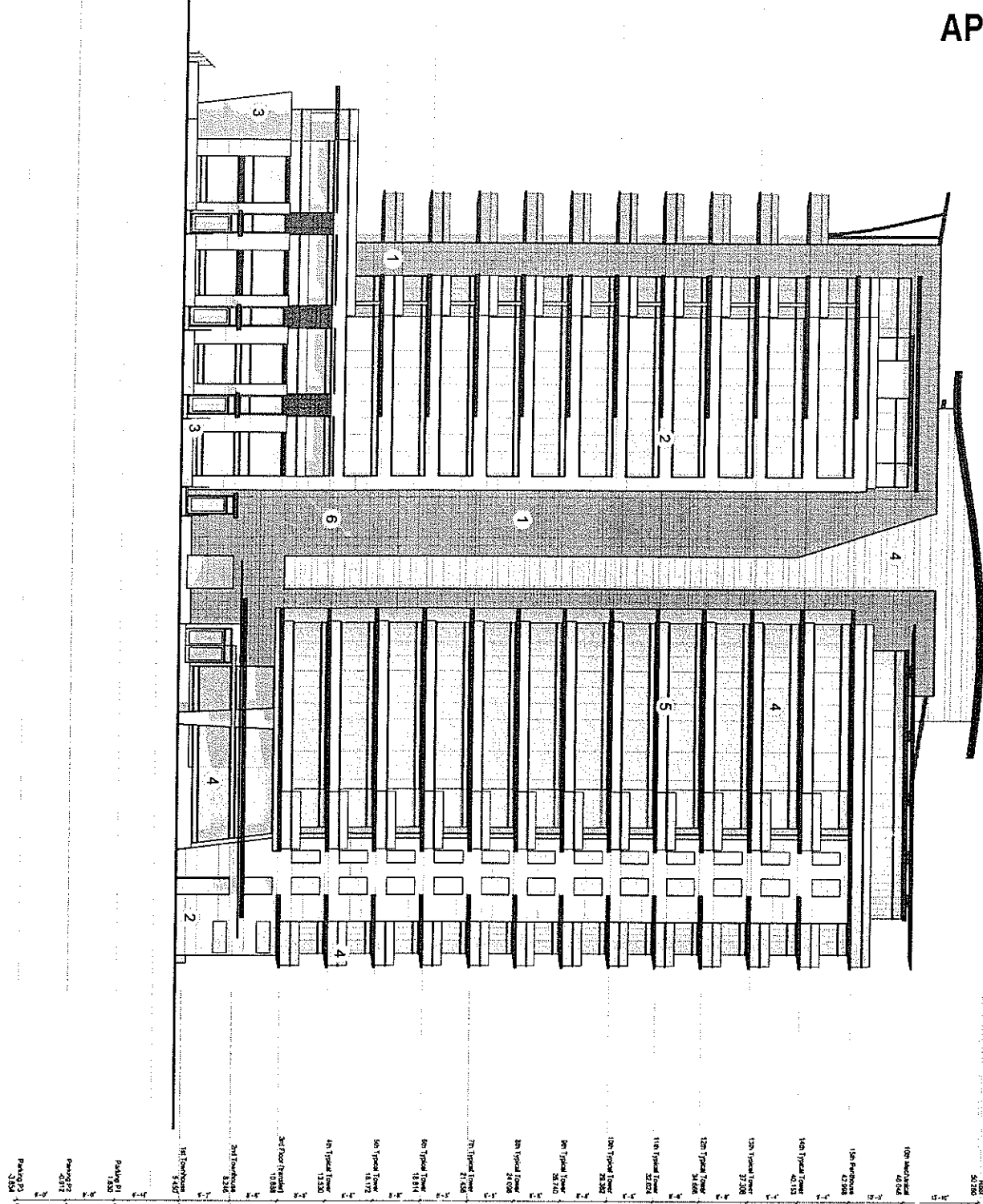
Project No.  
2312  
 Drawing No.  
A2.1

Drawing Title  
Site Plan

Project  
Pacific Place Area 6A  
 Concord Pacific Group Inc.  
 900 - 1090 West Pender St.

**Walter Francis Architect Inc.**  
 1604 West 2nd Ave., Vancouver, B.C., V6J 1Y4  
 Tel: 604 685 3252 Fax: 604 685 5995  
 Date: Nov 15/04 Scale: 1/200  
 Drawn: [initials] Checked: [initials]

This drawing is an instrument of service to the property of Walter Francis Architect Inc. and may not be reproduced without the firm's permission. All information shown on this drawing is for the use in this specific project only and shall not be used elsewhere without written permission from this office.

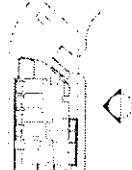


100' Mechanical 10.000  
 105' Penthouse 10.500  
 110' Typical Floor 11.000  
 115' Typical Floor 11.500  
 120' Typical Floor 12.000  
 125' Typical Floor 12.500  
 130' Typical Floor 13.000  
 135' Typical Floor 13.500  
 140' Typical Floor 14.000  
 145' Typical Floor 14.500  
 150' Typical Floor 15.000  
 155' Typical Floor 15.500  
 160' Typical Floor 16.000  
 Parking B1 16.500  
 Parking B2 17.000  
 Parking B3 17.500  
 Parking B4 18.000  
 Parking B5 18.500  
 Parking B6 19.000  
 Parking B7 19.500  
 Parking B8 20.000  
 Parking B9 20.500  
 Parking B10 21.000  
 Parking B11 21.500  
 Parking B12 22.000  
 Parking B13 22.500  
 Parking B14 23.000  
 Parking B15 23.500  
 Parking B16 24.000  
 Parking B17 24.500  
 Parking B18 25.000  
 Parking B19 25.500  
 Parking B20 26.000  
 Parking B21 26.500  
 Parking B22 27.000  
 Parking B23 27.500  
 Parking B24 28.000  
 Parking B25 28.500  
 Parking B26 29.000  
 Parking B27 29.500  
 Parking B28 30.000  
 Parking B29 30.500  
 Parking B30 31.000  
 Parking B31 31.500  
 Parking B32 32.000  
 Parking B33 32.500  
 Parking B34 33.000  
 Parking B35 33.500  
 Parking B36 34.000  
 Parking B37 34.500  
 Parking B38 35.000  
 Parking B39 35.500  
 Parking B40 36.000  
 Parking B41 36.500  
 Parking B42 37.000  
 Parking B43 37.500  
 Parking B44 38.000  
 Parking B45 38.500  
 Parking B46 39.000  
 Parking B47 39.500  
 Parking B48 40.000  
 Parking B49 40.500  
 Parking B50 41.000  
 Parking B51 41.500  
 Parking B52 42.000  
 Parking B53 42.500  
 Parking B54 43.000  
 Parking B55 43.500  
 Parking B56 44.000  
 Parking B57 44.500  
 Parking B58 45.000  
 Parking B59 45.500  
 Parking B60 46.000  
 Parking B61 46.500  
 Parking B62 47.000  
 Parking B63 47.500  
 Parking B64 48.000  
 Parking B65 48.500  
 Parking B66 49.000  
 Parking B67 49.500  
 Parking B68 50.000  
 Parking B69 50.500  
 Parking B70 51.000  
 Parking B71 51.500  
 Parking B72 52.000  
 Parking B73 52.500  
 Parking B74 53.000  
 Parking B75 53.500  
 Parking B76 54.000  
 Parking B77 54.500  
 Parking B78 55.000  
 Parking B79 55.500  
 Parking B80 56.000  
 Parking B81 56.500  
 Parking B82 57.000  
 Parking B83 57.500  
 Parking B84 58.000  
 Parking B85 58.500  
 Parking B86 59.000  
 Parking B87 59.500  
 Parking B88 60.000  
 Parking B89 60.500  
 Parking B90 61.000  
 Parking B91 61.500  
 Parking B92 62.000  
 Parking B93 62.500  
 Parking B94 63.000  
 Parking B95 63.500  
 Parking B96 64.000  
 Parking B97 64.500  
 Parking B98 65.000  
 Parking B99 65.500  
 Parking B100 66.000  
 Parking B101 66.500  
 Parking B102 67.000  
 Parking B103 67.500  
 Parking B104 68.000  
 Parking B105 68.500  
 Parking B106 69.000  
 Parking B107 69.500  
 Parking B108 70.000  
 Parking B109 70.500  
 Parking B110 71.000  
 Parking B111 71.500  
 Parking B112 72.000  
 Parking B113 72.500  
 Parking B114 73.000  
 Parking B115 73.500  
 Parking B116 74.000  
 Parking B117 74.500  
 Parking B118 75.000  
 Parking B119 75.500  
 Parking B120 76.000  
 Parking B121 76.500  
 Parking B122 77.000  
 Parking B123 77.500  
 Parking B124 78.000  
 Parking B125 78.500  
 Parking B126 79.000  
 Parking B127 79.500  
 Parking B128 80.000  
 Parking B129 80.500  
 Parking B130 81.000  
 Parking B131 81.500  
 Parking B132 82.000  
 Parking B133 82.500  
 Parking B134 83.000  
 Parking B135 83.500  
 Parking B136 84.000  
 Parking B137 84.500  
 Parking B138 85.000  
 Parking B139 85.500  
 Parking B140 86.000  
 Parking B141 86.500  
 Parking B142 87.000  
 Parking B143 87.500  
 Parking B144 88.000  
 Parking B145 88.500  
 Parking B146 89.000  
 Parking B147 89.500  
 Parking B148 90.000  
 Parking B149 90.500  
 Parking B150 91.000  
 Parking B151 91.500  
 Parking B152 92.000  
 Parking B153 92.500  
 Parking B154 93.000  
 Parking B155 93.500  
 Parking B156 94.000  
 Parking B157 94.500  
 Parking B158 95.000  
 Parking B159 95.500  
 Parking B160 96.000  
 Parking B161 96.500  
 Parking B162 97.000  
 Parking B163 97.500  
 Parking B164 98.000  
 Parking B165 98.500  
 Parking B166 99.000  
 Parking B167 99.500  
 Parking B168 100.000  
 Parking B169 100.500  
 Parking B170 101.000  
 Parking B171 101.500  
 Parking B172 102.000  
 Parking B173 102.500  
 Parking B174 103.000  
 Parking B175 103.500  
 Parking B176 104.000  
 Parking B177 104.500  
 Parking B178 105.000  
 Parking B179 105.500  
 Parking B180 106.000  
 Parking B181 106.500  
 Parking B182 107.000  
 Parking B183 107.500  
 Parking B184 108.000  
 Parking B185 108.500  
 Parking B186 109.000  
 Parking B187 109.500  
 Parking B188 110.000  
 Parking B189 110.500  
 Parking B190 111.000  
 Parking B191 111.500  
 Parking B192 112.000  
 Parking B193 112.500  
 Parking B194 113.000  
 Parking B195 113.500  
 Parking B196 114.000  
 Parking B197 114.500  
 Parking B198 115.000  
 Parking B199 115.500  
 Parking B200 116.000  
 Parking B201 116.500  
 Parking B202 117.000  
 Parking B203 117.500  
 Parking B204 118.000  
 Parking B205 118.500  
 Parking B206 119.000  
 Parking B207 119.500  
 Parking B208 120.000  
 Parking B209 120.500  
 Parking B210 121.000  
 Parking B211 121.500  
 Parking B212 122.000  
 Parking B213 122.500  
 Parking B214 123.000  
 Parking B215 123.500  
 Parking B216 124.000  
 Parking B217 124.500  
 Parking B218 125.000  
 Parking B219 125.500  
 Parking B220 126.000  
 Parking B221 126.500  
 Parking B222 127.000  
 Parking B223 127.500  
 Parking B224 128.000  
 Parking B225 128.500  
 Parking B226 129.000  
 Parking B227 129.500  
 Parking B228 130.000  
 Parking B229 130.500  
 Parking B230 131.000  
 Parking B231 131.500  
 Parking B232 132.000  
 Parking B233 132.500  
 Parking B234 133.000  
 Parking B235 133.500  
 Parking B236 134.000  
 Parking B237 134.500  
 Parking B238 135.000  
 Parking B239 135.500  
 Parking B240 136.000  
 Parking B241 136.500  
 Parking B242 137.000  
 Parking B243 137.500  
 Parking B244 138.000  
 Parking B245 138.500  
 Parking B246 139.000  
 Parking B247 139.500  
 Parking B248 140.000  
 Parking B249 140.500  
 Parking B250 141.000  
 Parking B251 141.500  
 Parking B252 142.000  
 Parking B253 142.500  
 Parking B254 143.000  
 Parking B255 143.500  
 Parking B256 144.000  
 Parking B257 144.500  
 Parking B258 145.000  
 Parking B259 145.500  
 Parking B260 146.000  
 Parking B261 146.500  
 Parking B262 147.000  
 Parking B263 147.500  
 Parking B264 148.000  
 Parking B265 148.500  
 Parking B266 149.000  
 Parking B267 149.500  
 Parking B268 150.000  
 Parking B269 150.500  
 Parking B270 151.000  
 Parking B271 151.500  
 Parking B272 152.000  
 Parking B273 152.500  
 Parking B274 153.000  
 Parking B275 153.500  
 Parking B276 154.000  
 Parking B277 154.500  
 Parking B278 155.000  
 Parking B279 155.500  
 Parking B280 156.000  
 Parking B281 156.500  
 Parking B282 157.000  
 Parking B283 157.500  
 Parking B284 158.000  
 Parking B285 158.500  
 Parking B286 159.000  
 Parking B287 159.500  
 Parking B288 160.000

**KEY NOTES**

- 1. Painted Concrete
- 2. Metal Wall Cladding
- 3. Staircase Concrete
- 4. Glazing in Aluminum Frames
- 5. Structural Panels in Aluminum Frames
- 6. Riveted Lites

City View Case Diagram 318m



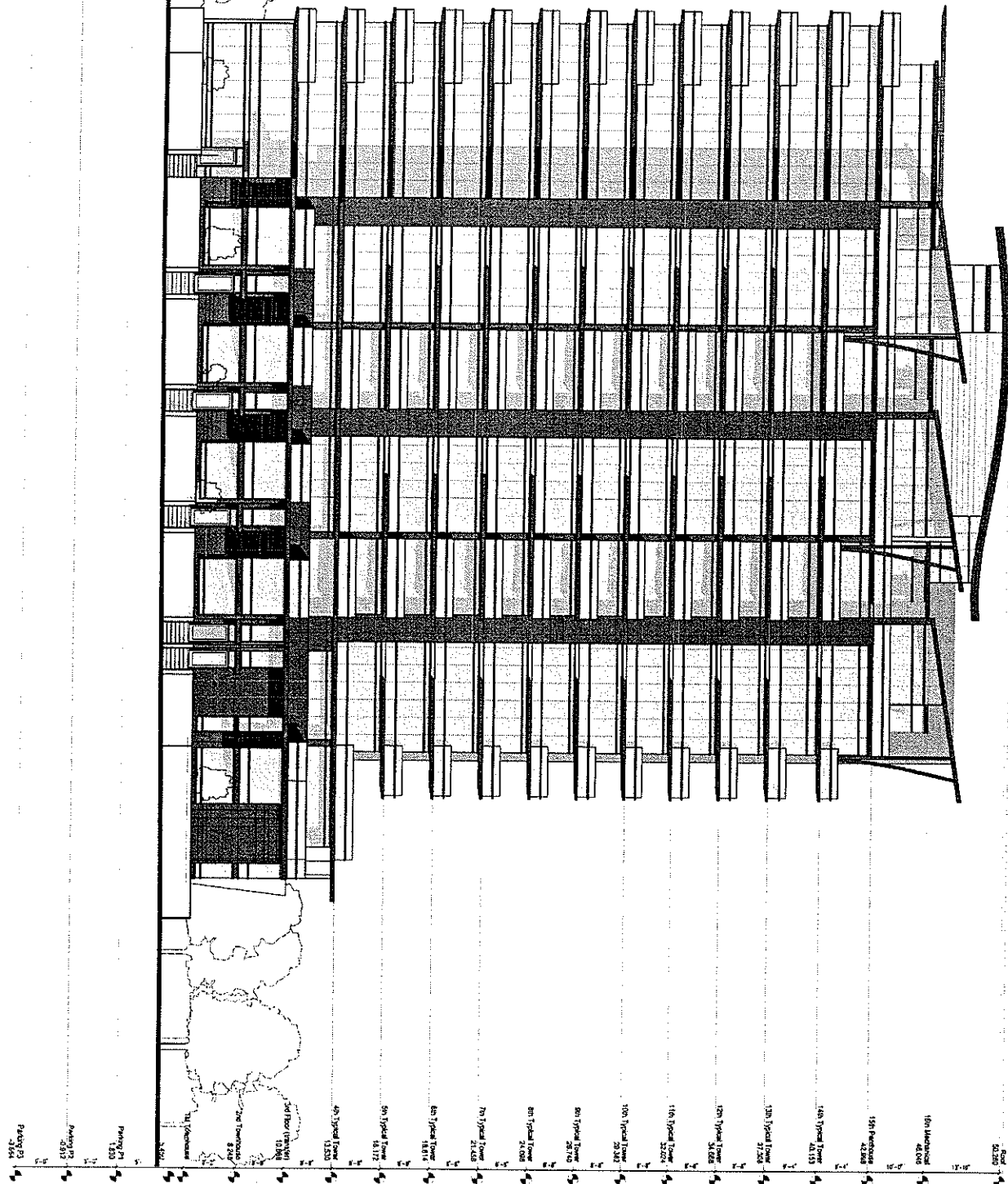
Project No.  
 2312  
 Drawing No.  
 A4.1

Drawing Title  
 North  
 Elevation

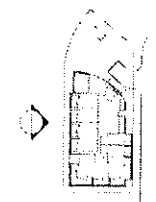
Project  
 Pacific Place Area 6A  
 Concord Pacific Group Inc.  
 900 - 1090 West Pender St.

**Walter Francis Architect Inc.**  
 1554 West 2nd Ave., Vancouver, B.C., V5J 1H4  
 Tel: 604.688.3252 Fax: 604.688.5595  
 Date November 15, 2004 Scale: 1:100  
 Drawn by Checked off

This drawing is an instrument of service in the property of Walter Francis Architect Inc. and may not be reproduced without the prior written consent of Walter Francis Architect Inc. This drawing is for the use of the specific project only and shall not be used for any other project without written consent from the office.



Aluminum Paneling System Height  
42.00 (127) from  
City New Corner Station



- KEY NOTES**
1. Painted Concrete
  2. Metal Wall Cladding
  3. Sealed Concrete
  4. Glazing in Aluminum Frames
  5. Spandrel Panels in Aluminum Frames
  6. Renew Lines
- Or View Over Diagram 320

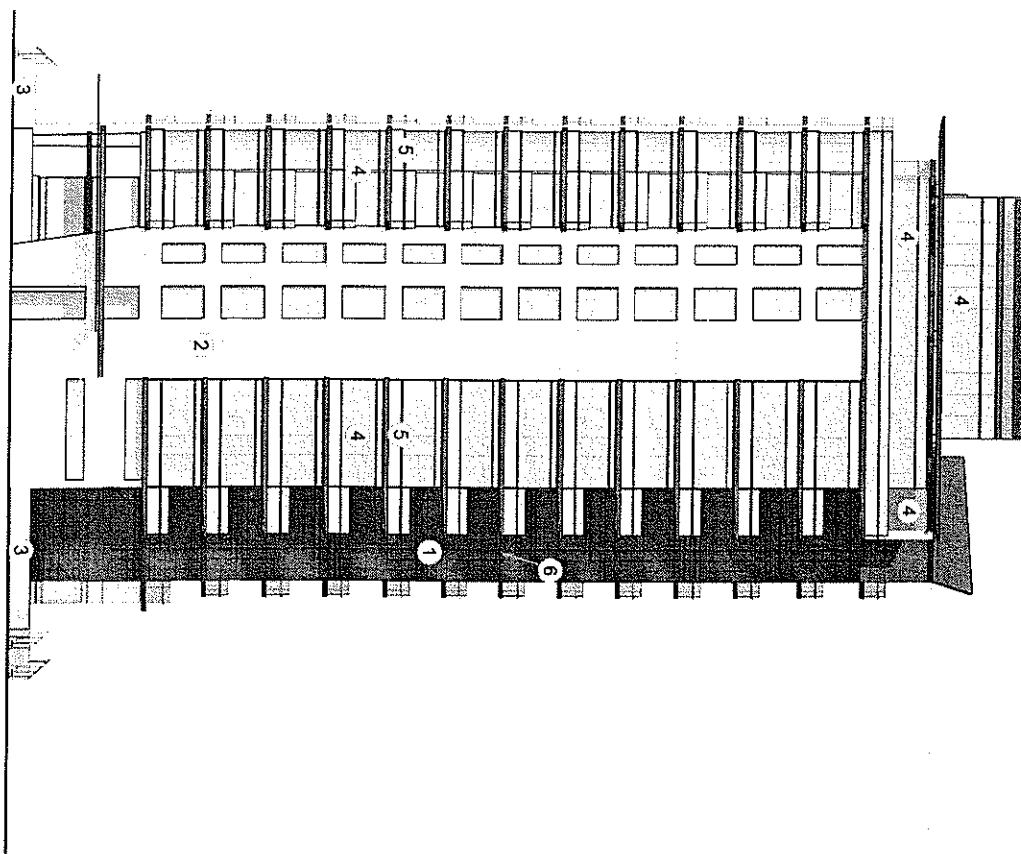
Project No.  
**2312**  
Drawing No.  
**A4.2**

Drawing Title  
**South  
Elevation**

Project  
**Pacific Place Area 6A  
Concord Pacific Group Inc.  
900 - 1090 West Pender St.**

**Walter Francis Architect Inc.**  
1664 West 2nd Ave., Vancouver, B.C. V5J 1H4  
Tel: 604.688.3252 Fax: 604.688.5995  
Date November 15, 2004 Scale 1:100  
Drawn: vjt Checked: off

This drawing is the intellectual property of Walter Francis Architect Inc. and may not be reproduced without the prior approval. All information shown on this drawing is for the use of the specific project only and shall not be used otherwise without written permission from the office.



3rd Floor (partial)	10088
7th Floor	1244
8th Typical Tower	13350
9th Typical Tower	13350
10th Typical Tower	13350
11th Typical Tower	13350
12th Typical Tower	13350
13th Typical Tower	13350
14th Typical Tower	13350
15th Typical Tower	13350
16th Typical Tower	13350
17th Typical Tower	13350
18th Typical Tower	13350
19th Typical Tower	13350
20th Typical Tower	13350
21st Typical Tower	13350
22nd Typical Tower	13350
23rd Typical Tower	13350
24th Typical Tower	13350
25th Typical Tower	13350
26th Typical Tower	13350
27th Typical Tower	13350
28th Typical Tower	13350
29th Typical Tower	13350
30th Typical Tower	13350
31st Typical Tower	13350
32nd Typical Tower	13350
33rd Typical Tower	13350
34th Typical Tower	13350
35th Typical Tower	13350
36th Typical Tower	13350
37th Typical Tower	13350
38th Typical Tower	13350
39th Typical Tower	13350
40th Typical Tower	13350
41st Typical Tower	13350
42nd Typical Tower	13350
43rd Typical Tower	13350
44th Typical Tower	13350
45th Typical Tower	13350
46th Typical Tower	13350
47th Typical Tower	13350
48th Typical Tower	13350
49th Typical Tower	13350
50th Typical Tower	13350
51st Typical Tower	13350
52nd Typical Tower	13350
53rd Typical Tower	13350
54th Typical Tower	13350
55th Typical Tower	13350
56th Typical Tower	13350
57th Typical Tower	13350
58th Typical Tower	13350
59th Typical Tower	13350
60th Typical Tower	13350
61st Typical Tower	13350
62nd Typical Tower	13350
63rd Typical Tower	13350
64th Typical Tower	13350
65th Typical Tower	13350
66th Typical Tower	13350
67th Typical Tower	13350
68th Typical Tower	13350
69th Typical Tower	13350
70th Typical Tower	13350
71st Typical Tower	13350
72nd Typical Tower	13350
73rd Typical Tower	13350
74th Typical Tower	13350
75th Typical Tower	13350
76th Typical Tower	13350
77th Typical Tower	13350
78th Typical Tower	13350
79th Typical Tower	13350
80th Typical Tower	13350
81st Typical Tower	13350
82nd Typical Tower	13350
83rd Typical Tower	13350
84th Typical Tower	13350
85th Typical Tower	13350
86th Typical Tower	13350
87th Typical Tower	13350
88th Typical Tower	13350
89th Typical Tower	13350
90th Typical Tower	13350
91st Typical Tower	13350
92nd Typical Tower	13350
93rd Typical Tower	13350
94th Typical Tower	13350
95th Typical Tower	13350
96th Typical Tower	13350
97th Typical Tower	13350
98th Typical Tower	13350
99th Typical Tower	13350
100th Typical Tower	13350
101st Typical Tower	13350
102nd Typical Tower	13350
103rd Typical Tower	13350
104th Typical Tower	13350
105th Typical Tower	13350
106th Typical Tower	13350
107th Typical Tower	13350
108th Typical Tower	13350
109th Typical Tower	13350
110th Typical Tower	13350
111th Typical Tower	13350
112th Typical Tower	13350
113th Typical Tower	13350
114th Typical Tower	13350
115th Typical Tower	13350
116th Typical Tower	13350
117th Typical Tower	13350
118th Typical Tower	13350
119th Typical Tower	13350
120th Typical Tower	13350
121st Typical Tower	13350
122nd Typical Tower	13350
123rd Typical Tower	13350
124th Typical Tower	13350
125th Typical Tower	13350
126th Typical Tower	13350
127th Typical Tower	13350
128th Typical Tower	13350
129th Typical Tower	13350
130th Typical Tower	13350
131st Typical Tower	13350
132nd Typical Tower	13350
133rd Typical Tower	13350
134th Typical Tower	13350
135th Typical Tower	13350
136th Typical Tower	13350
137th Typical Tower	13350
138th Typical Tower	13350
139th Typical Tower	13350
140th Typical Tower	13350
141st Typical Tower	13350
142nd Typical Tower	13350
143rd Typical Tower	13350
144th Typical Tower	13350
145th Typical Tower	13350
146th Typical Tower	13350
147th Typical Tower	13350
148th Typical Tower	13350
149th Typical Tower	13350
150th Typical Tower	13350
151st Typical Tower	13350
152nd Typical Tower	13350
153rd Typical Tower	13350
154th Typical Tower	13350
155th Typical Tower	13350
156th Typical Tower	13350
157th Typical Tower	13350
158th Typical Tower	13350
159th Typical Tower	13350
160th Typical Tower	13350
161st Typical Tower	13350
162nd Typical Tower	13350
163rd Typical Tower	13350
164th Typical Tower	13350
165th Typical Tower	13350
166th Typical Tower	13350
167th Typical Tower	13350
168th Typical Tower	13350
169th Typical Tower	13350
170th Typical Tower	13350
171st Typical Tower	13350
172nd Typical Tower	13350
173rd Typical Tower	13350
174th Typical Tower	13350
175th Typical Tower	13350
176th Typical Tower	13350
177th Typical Tower	13350
178th Typical Tower	13350
179th Typical Tower	13350
180th Typical Tower	13350
181st Typical Tower	13350
182nd Typical Tower	13350
183rd Typical Tower	13350
184th Typical Tower	13350
185th Typical Tower	13350
186th Typical Tower	13350
187th Typical Tower	13350
188th Typical Tower	13350
189th Typical Tower	13350
190th Typical Tower	13350
191st Typical Tower	13350
192nd Typical Tower	13350
193rd Typical Tower	13350
194th Typical Tower	13350
195th Typical Tower	13350
196th Typical Tower	13350
197th Typical Tower	13350
198th Typical Tower	13350
199th Typical Tower	13350
200th Typical Tower	13350

- KEY NOTES**
1. Painted Concrete
  2. Metal Wall Cladding
  3. Sealed Concrete
  4. Cladding in Aluminum Frames
  5. Spandrel Panels in Aluminum Frames
  6. Renewal Liner
- CS View Over Station 3155



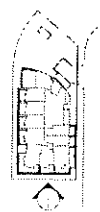
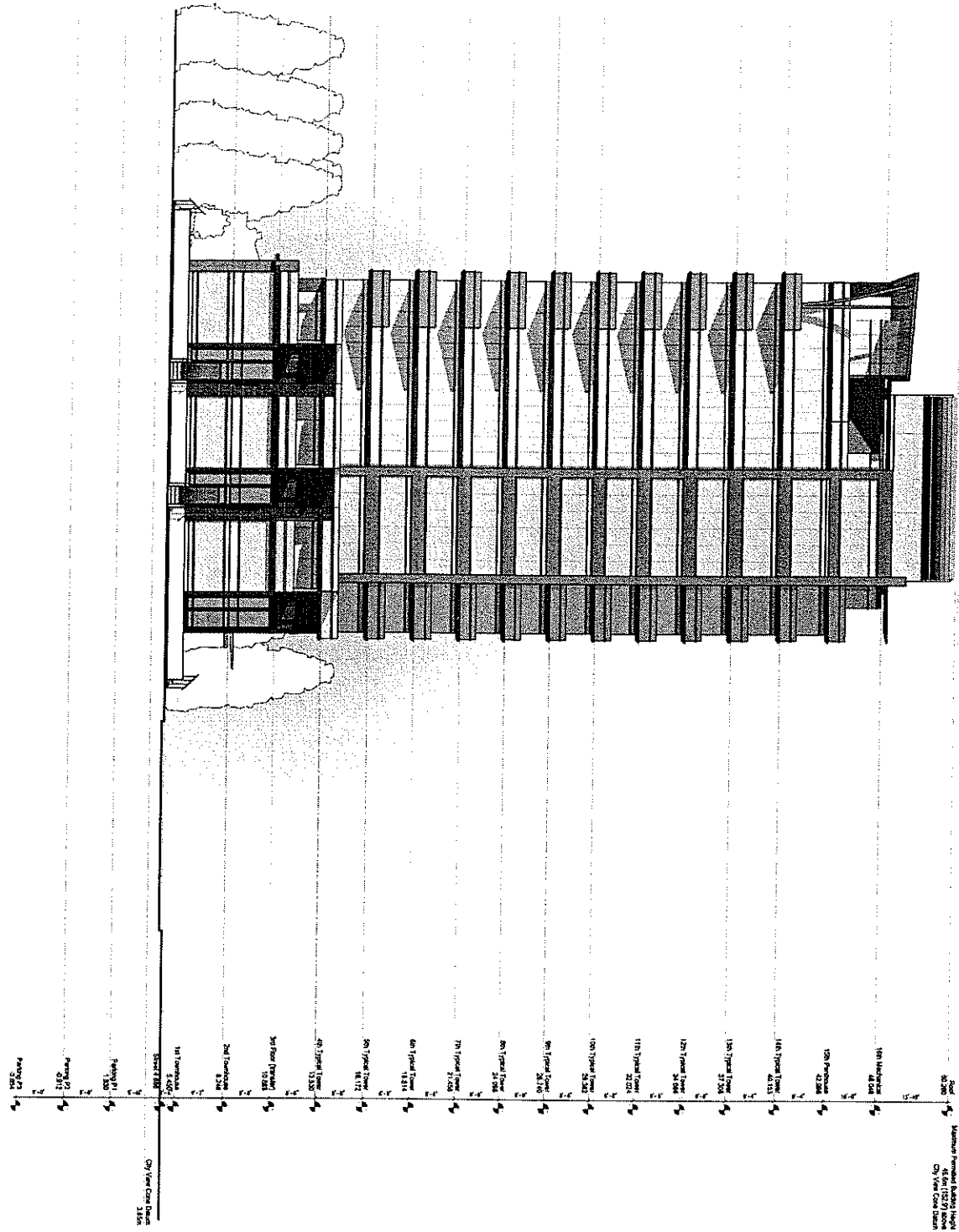
Project No.  
**2312**  
Drawing No.  
**A4.3**

Drawing Title  
**West Elevation**

Project  
**Pacific Place Area 6A  
Concord Pacific Group Inc.  
900 - 1090 West Pender St.**

**Walter Francl Architect Inc.**  
1564 West 2nd Ave., Vancouver, B.C. V5L 1H4  
Tel: 604.688.3252 Fax: 604.688.5595  
Date November 15, 2004 Scale 1:100  
Drawn: JH Checked: JH

This drawing is the property of Walter Francl Architect Inc. and may not be reproduced without the prior permission of the architect. It is to be used only for the specific project and may not be used otherwise without written permission from the architect.



Project No.  
2312  
Drawing No.  
A4.4

Drawing Title  
East  
Elevation

Project  
Pacific Place Area 6A  
Concord Pacific Group Inc.  
900 - 1090 West Pender St.

Walter Francis Architect Inc.  
1604 West 2nd Ave., Vancouver, B.C. V6J 3H4  
Tel: 604 688 3282 Fax: 604 688 5000  
Date November 15, 2004 Scale 1/100  
Drawn by Checked off

This drawing is an instrument of service in the property of Walter Francis Architect Inc. and may not be reproduced without its prior permission. All information shown on this drawing is for the use in the specific project and shall not be used otherwise without written permission from this office.