

--- ZONING BOUNDARY



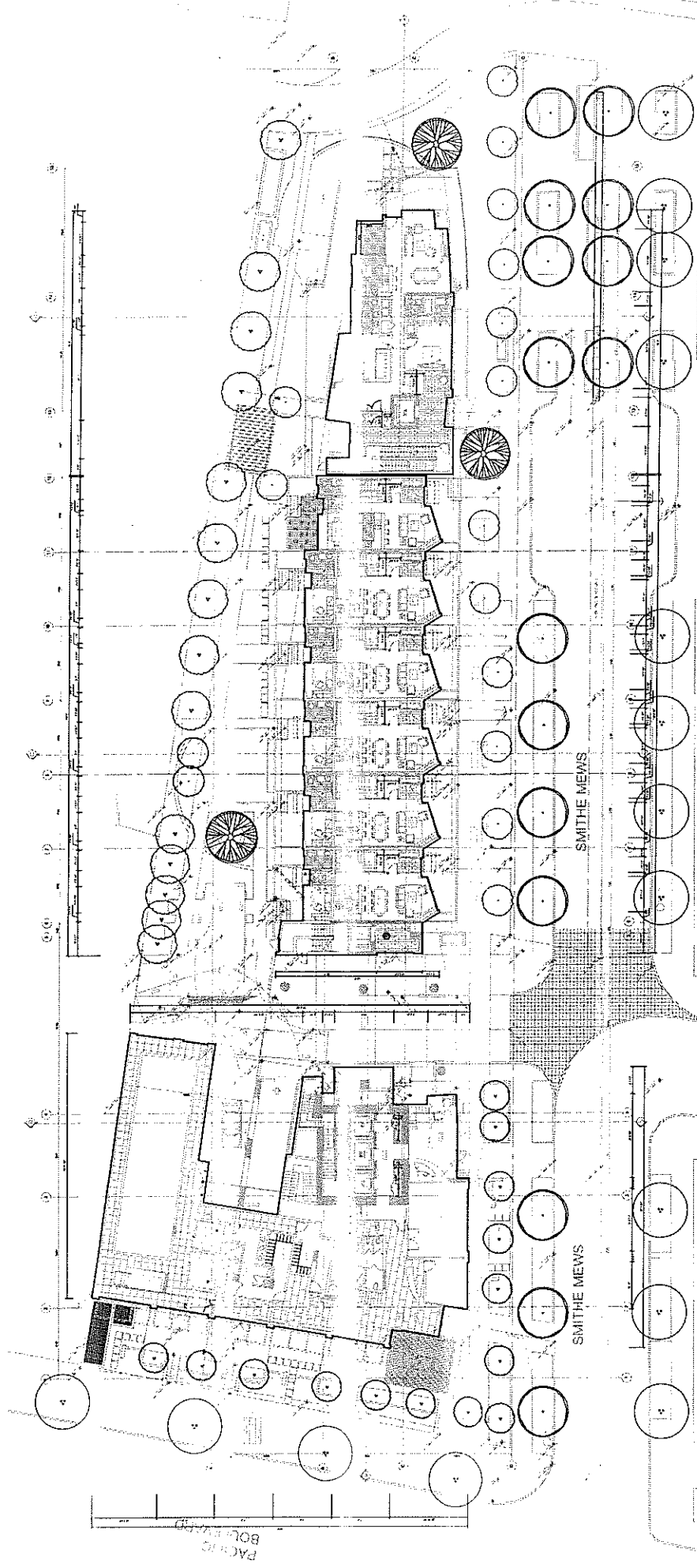
Site: 33 Smithe Street DE 408515
City of Vancouver Planning Department


Date: 2004 November 24
Drawn: TM
Scale: 1:2000

SEAL: **Page 1 of 5**

THE ENGINEER OR ARCHITECT
 IN BRITISH COLUMBIA MUST BE A MEMBER OF THE SOCIETY OF PROFESSIONAL ENGINEERS AND ARCHITECTS OF BRITISH COLUMBIA.
 THE SOCIETY OF PROFESSIONAL ENGINEERS AND ARCHITECTS OF BRITISH COLUMBIA IS A SOCIETY OF PROFESSIONAL ENGINEERS AND ARCHITECTS OF BRITISH COLUMBIA.
 THE SOCIETY OF PROFESSIONAL ENGINEERS AND ARCHITECTS OF BRITISH COLUMBIA IS A SOCIETY OF PROFESSIONAL ENGINEERS AND ARCHITECTS OF BRITISH COLUMBIA.

DATE REVISIONS BY
 MAY25, 2004 ISSUED FOR COMPLETE DP
 NOV15, 2004 RE-ISSUED FOR COMPLETE DP





Hancock
Brückner
Eng + Wright
ARCHITECTS

305-1442 W. Georgia St. Vancouver, B.C. V6G 2T3
 Phone: (604) 683-2775 Fax: (604) 681-2770

PROJECT TITLE:
**CONCORD PACIFIC
 COOPER PARK - BUILDING 6C
 33 SMITHE STREET
 VANCOUVER**

SHEET TITLE:
GROUND LEVEL

JOB NO.: 6387
 DATE: 03.04.004
 SCALE: 1:100
 DRAWN BY: GV
 CHECKED BY: GV
 REV. NO.:

NOTE: See DRAWING SUPERSEDES NO. 1, SAME DRAWING
 PROVIDED ARCHITECTS BACK

SHEET NO.: **DP**

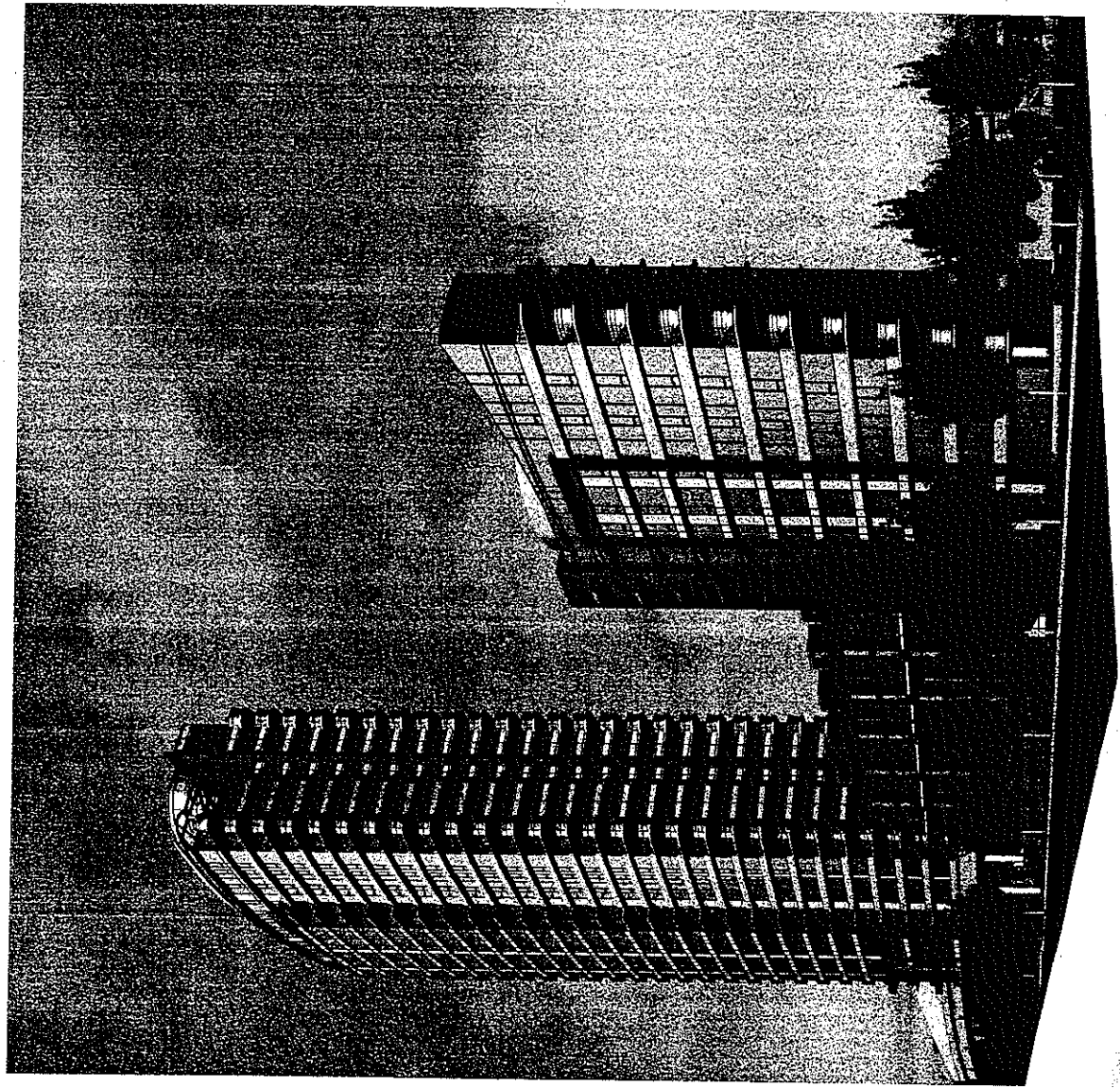
P.L.D. NUMBER: P-0001 Concord Park (Supermarket) - ground level
 DATE LAST REVISED: 06.11.04

PACIFIC
 BUILDING

RECEIVED
CITY OF VANCOUVER
NOV 15 2004
COMMUNITY SERVICES
DEVELOPMENT SERVICES

MAIL:
DATE: _____ BY: _____
MAY BE USED FOR COMPLETE OR
NOTY FURNISHED FOR COMPLETE OF

DE 408515



**HEITCOCK
ARCHITECTS**
200 West 4th Street, Vancouver, B.C. V6B 2T1
Phone: (604) 681-2275 Fax: (604) 681-2279

PROJECT TITLE:
CONCORD PACIFIC
COOPER PARK - BUILDING 6C
Area 6A

SHEET TITLE:
PERSPECTIVE

JOB NO.: 0007
DATE: 04.12.04
SCALE: 1/8" = 1'-0"
DRAWN BY: JY
CHECKED BY: JY
REV. NO.:
NOT FOR CONSTRUCTION OR FOR MARKING
WITHOUT WRITTEN APPROVAL
SHEET NO.: DP 6.01
ALL RIGHTS RESERVED. PHOTOGRAPHY BY HEITCOCK ARCHITECTS
NOT FOR CONSTRUCTION

PROJECT TITLE
CONCORD PACIFIC
COOPER PARK - BUILDING 60
33 SMITHE STREET

SHEET TITLE
WEST ELEVATION

HEIDRICK
BRIDGEMAN
EGG & WHITFIELD
ARCHITECTS
300 CALLE DE SANTIAGO S. WASHINGTON, D.C. 20004-1070
Phone: (202) 638-2828 Fax: (202) 638-1070

DATE: REVISIONS BY
NOV 12, 2004 REVISIONS FOR COMPLETE SP.

SCALE:
AS SHOWN ON THIS SHEET
UNLESS OTHERWISE NOTED
ALL DIMENSIONS ARE IN FEET AND INCHES
UNLESS OTHERWISE NOTED
ALL DIMENSIONS ARE TO FACE UNLESS OTHERWISE NOTED
ALL DIMENSIONS ARE TO FACE UNLESS OTHERWISE NOTED
ALL DIMENSIONS ARE TO FACE UNLESS OTHERWISE NOTED
ALL DIMENSIONS ARE TO FACE UNLESS OTHERWISE NOTED

MATERIAL LEGEND

- 1. CONCRETE REINFORCED
- 2. EXTERIOR BRICKWORK, PAINT
- 3. EXTERIOR BRICKWORK, UNPAINTED
- 4. EXTERIOR BRICKWORK, UNPAINTED, WITH GLAZED TERRAZZO
- 5. EXTERIOR BRICKWORK, UNPAINTED, WITH GLAZED TERRAZZO AND GLAZED TERRAZZO
- 6. EXTERIOR BRICKWORK, UNPAINTED, WITH GLAZED TERRAZZO AND GLAZED TERRAZZO
- 7. EXTERIOR BRICKWORK, UNPAINTED, WITH GLAZED TERRAZZO AND GLAZED TERRAZZO
- 8. EXTERIOR BRICKWORK, UNPAINTED, WITH GLAZED TERRAZZO AND GLAZED TERRAZZO
- 9. EXTERIOR BRICKWORK, UNPAINTED, WITH GLAZED TERRAZZO AND GLAZED TERRAZZO
- 10. EXTERIOR BRICKWORK, UNPAINTED, WITH GLAZED TERRAZZO AND GLAZED TERRAZZO
- 11. EXTERIOR BRICKWORK, UNPAINTED, WITH GLAZED TERRAZZO AND GLAZED TERRAZZO
- 12. EXTERIOR BRICKWORK, UNPAINTED, WITH GLAZED TERRAZZO AND GLAZED TERRAZZO
- 13. EXTERIOR BRICKWORK, UNPAINTED, WITH GLAZED TERRAZZO AND GLAZED TERRAZZO
- 14. EXTERIOR BRICKWORK, UNPAINTED, WITH GLAZED TERRAZZO AND GLAZED TERRAZZO

